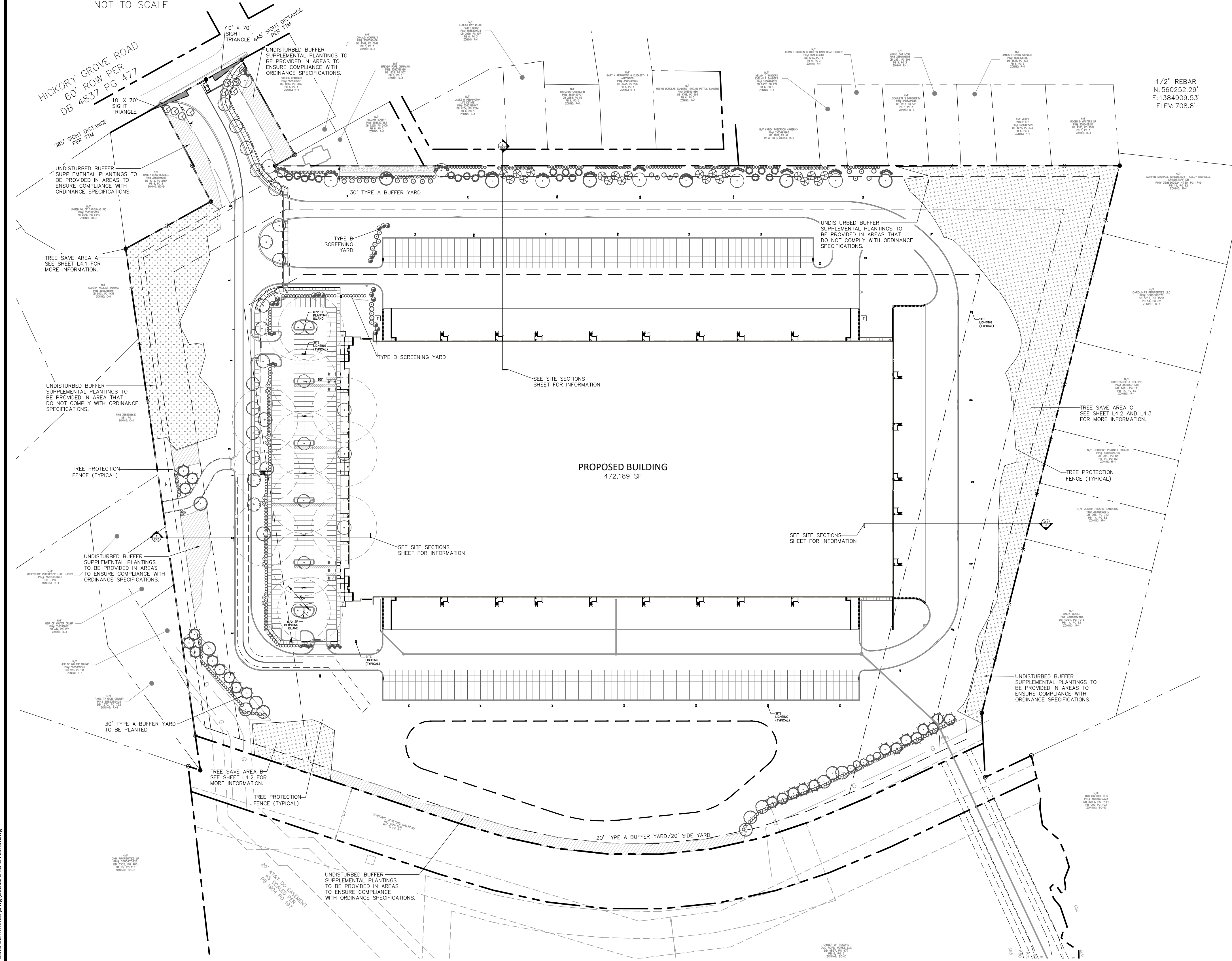


VICINITY MAP
NOT TO SCALE



TREE SAVE AREA:

TREE SAVE AREA REQUIRED: 10% OF 44.22 AC = 4.42 AC
TREE SAVE PROVIDED: 6.13 AC

AREA	TSA CREDIT IN SF
Area A	72,566.95 SF
Area B	4,536.60 SF
Area C	189,919.75 SF

Total TSA Provided: 267,023.30 SF 6.13 AC

SEE SHEETS L4.2, L4.3 AND L4.4 FOR INDIVIDUAL TREE SAVE AREA CALCULATIONS AND INFORMATION.

STREET TREE CANOPY REQUIRED:

HICKORY RIDGE ROAD
170 LF OF R/W ALONG HICKORY RIDGE ROAD
1 SMALL ORNAMENTAL TREE PER 20 LF = 9 SMALL MATURING TREES REQUIRED
9 SMALL MATURING TREES PROVIDED

OAK STREET
NONE REQUIRED

OAKS CROSSING LANE
782 LF OF R/W ALONG OAK STREET
18 LARGE MATURING TREE PER 45 LF = 18 LARGE MATURING TREES REQUIRED
(ONE SIDE OF STREET ONLY - PARKSIDE DRIVE)
18 LARGE MATURING TREES PROVIDED

TYPE A BUFFER YARD REQUIRED:

BUFFER YARD PLANTING SPECIFICATIONS:
- Unmatured plantings of deciduous tree species shall attain a height at maturity of no less than 20 feet and have an unobstructed opening wider than 20 feet between trees complete to the time of installation.
- At the time of installation, shrub plantings shall have a minimum height of three feet and have an unobstructed opening wider than four feet.
- At least 90% of the required trees, and at least 75% of the required shrubs, shall be evergreen species locally adapted to the area.
- When a natural buffer exists, it is to remain undisturbed. If the existing conditions of the buffer do not meet requirements of Type A landscaping, supplemental planting may be required by the planning director, if allowable by the jurisdiction governing the natural resource buffer.

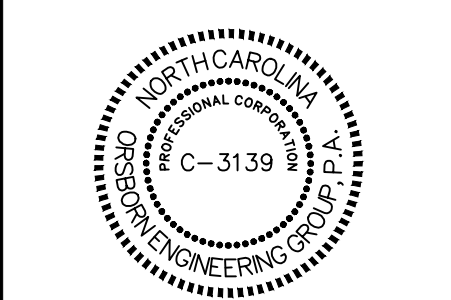
TYPE B BUFFER YARD REQUIRED:

BUFFER YARD PLANTING SPECIFICATIONS:
- Shrub plantings shall have an unobstructed opening wider than four (4) feet at the time of installation.
- At least 75% of the required shrubs shall be evergreen species locally adapted to the area.
- All side and parking areas in the Downtown and Neighborhood Center Commercial districts shall be screened from the sidewalk by low walls, fences, or constructed as a continuation of the building wall a minimum of three (3) feet in height.
- The use of existing vegetation is valid; this requirement is encouraged.
- The minimum height species selection for electrically screening parking areas is six feet. This type of planting should be capable to screen the off-site view of parking areas from neighboring properties and streets.

ORSBORN
ENGINEERING GROUP
605 LEXINGTON AVENUE, SUITE 301
CHARLOTTE, NC 28203
P) 704-749-1432
www.orsborn-eng.com

OVERALL LANDSCAPE PLAN
FOR
THE OAKS COMMERCE
BELMONT, NORTH CAROLINA

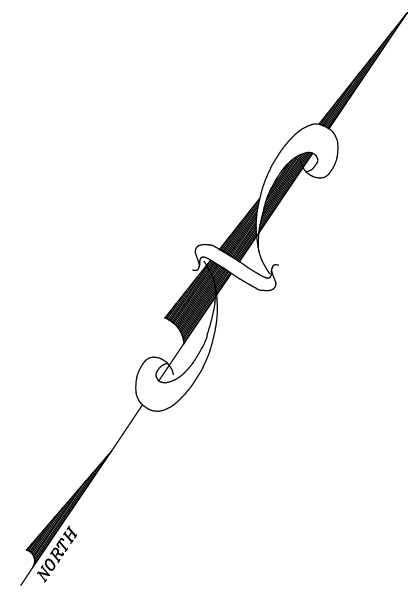
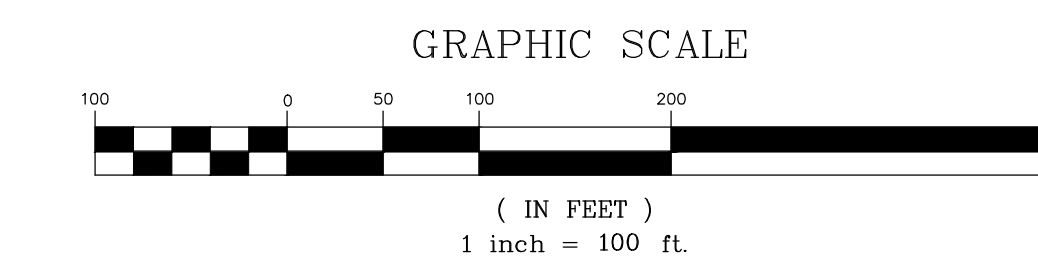
Crow Holdings
INDUSTRIAL
4064 COLONY ROAD, SUITE 405,
CHARLOTTE, NC 28211



NO.	DATE	REVISIONS
1	09/01/2022	REVISED PER COMMENTS
2	07/28/2022	REVISED PER COMMENTS
3	07/20/2022	REVISED PER COMMENTS
4	05/10/2022	REVISED PER COMMENTS

JOB #	22011
DATE	03/24/22
SCALE	1" = 100'
DRAWN BY:	JAW
APPROVED BY:	JCO

L4.0



October 05, 2022 - JCOBran, Rev. 1440
P:\2021\The Oaks Commerce\Draw\22011 L4.0 DWG.dwg

PLAN# 3300394233
 DB 4712, PG 2487
 PB 6, PG 3
 ZONING: BC-D

N/F
 UNITED OIL OF CAROLINAS INC
 PIN# 3585393085
 DB 4506, PG 2303
 ZONING: NC-C

N/F
 AGUSTIN AGUILAR ZAMORA
 PIN# 3585385846
 DB 5091, PG 1436
 ZONING: C-1

N/F
 GERTRUDE CURRENCE
 HALL HEIRS
 PIN# 3585386687
 DB , PG
 ZONING: C-1

PROPOSED DRIVEWAY

PROPOSED 47' PUBLIC R/W
 OAKS CROSSING LANE

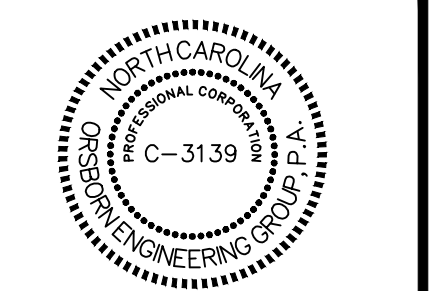
TREE ID NUMBER	COMMON NAME	CONDITION	DBH	CLASSIFICATION	TSA MULTIPLIER	CRZ AREA	TSA CREDIT
15055	Hickory	Fair	20	Significant	1.5	1,256.64	1,884.96
15072	Tulip tree	Good	31	Significant	1.5	3,019.07	4,528.61
15079	White oak	Good	22	Significant	1.5	1,520.53	2,280.80
15081	Southern magnolia	Good	11	Protected	1	380.13	380.13
15083	Pine	Dead	14	Protected	1	0.00	0.00
15084	Tulip tree	Dead	14	Protected	1	0.00	0.00
15087	Tulip tree	Good	22	Significant	1.5	1,520.53	2,280.80
15089	Tulip tree	Good	19	Significant	1.5	1,134.11	1,701.17
15093	Red maple	Good	15	Protected	1	706.86	706.86
15097	Willow oak	Fair	19	Significant	1.5	1,134.11	1,701.17
15100	Willow oak	Good	13	Protected	1	530.93	530.93
15104	Willow oak	Dead	14	Protected	1	0.00	0.00
15106	Red maple	Poor	15	Protected	1	0.00	0.00
15112	Pine	Good	20	Significant	1.5	1,256.64	1,884.96
15115	Pine	Fair	14	Protected	1	615.75	615.75
15119	Tulip tree	Fair	15	Protected	1	706.86	706.86
15120	Willow oak	Poor	14	Protected	1	0.00	0.00
15121	Willow oak	Fair	16	Protected	1	804.25	804.25
15122	Tulip tree	Good	18	Significant	1.5	1,017.88	1,526.81
15123	Black cherry	Good	21	Significant	1.5	1,385.44	2,078.16
15124	Water oak	Poor	10	Protected	1	0.00	0.00
15130	Hickory	Fair	16	Protected	1	804.25	804.25
15137	Tulip tree	Poor	14	Protected	1	0.00	0.00
15140	Tulip tree	Good	14	Protected	1	615.75	615.75
15142	Tulip tree	Fair	16	Protected	1	804.25	804.25
15145	Tulip tree	Fair	18	Significant	1.5	1,017.88	1,526.81
15148	Pine	Fair	13	Protected	1	530.93	530.93
15149	Tulip tree	Good	16	Protected	1	804.25	804.25
15150	Sweetgum	Good	21	Significant	1.5	1,385.44	2,078.16
15153	White oak	Good	38	Heritage	1	4,536.46	4,536.46
15157	Black cherry	Poor	12	Protected	1	0.00	0.00
15184	Tulip tree	Fair	16	Protected	1	804.25	804.25
15189	Tulip tree	Good	14	Protected	1	615.75	615.75
15193	Pine	Poor	14	Protected	1	0.00	0.00
15194	Black cherry	Poor	10	Protected	1	0.00	0.00
15206	Tulip tree	Good	13	Protected	1	530.93	530.93
15213	Willow oak	Fair	17	Protected	1	907.92	907.92
15215	Pine	Good	20	Significant	1.5	1,256.64	1,884.96
15219	White oak	Good	33	Significant	1.5	3,421.19	5,131.79
15222	White ash	Fair	12	Protected	1	452.39	452.39
15223	White ash	Good	12	Protected	1	452.39	452.39
15251	Black cherry	Fair	14	Protected	1	615.75	615.75
15291	Red maple	Fair	13	Protected	1	530.93	530.93
15293	Southern red oak	Fair	35	Significant	1.5	3,848.45	5,772.68
15294	White oak	Good	29	Significant	1.5	2,642.08	3,963.12
15296	Tulip tree	Fair	12	Protected	1	452.39	452.39
15297	White oak	Fair	17	Protected	1	907.92	907.92
15299	Southern red oak	Good	12	Protected	1	452.39	452.39
15300	White oak	Fair	20	Significant	1.5	1,256.64	1,884.96
15301	Southern red oak	Fair	16	Protected	1	804.25	804.25
15302	Water oak	Fair	13	Protected	1	530.93	530.93
15303	Black cherry	Fair	10	Protected	1	314.16	314.16
15304	Water oak	Fair	15	Protected	1	706.86	706.86
15305	Willow oak	Fair	15	Protected	1	706.86	706.86
15306	Tulip tree	Good	21	Significant	1.5	1,385.44	2,078.16
15307	Southern red oak	Fair	15	Protected	1	706.86	706.86
15309	White oak	Fair	40	Heritage	2	5,026.55	10,053.10
TOTAL TSA CREDIT (AREA A)							75,867.89 SF
PHYSICAL AREA (AREA A)							48,377.97 SF
Max Allowed Tree Credit (Area A): 1.5 * 48,377.96 =							72,566.95 SF



605 LEXINGTON AVENUE, SUITE 301
 CHARLOTTE, NC 28203
 P) 704-749-1432
 www.orsborn-eng.com

COMPLIANCE LANDSCAPE
 TREE SAVE AREAS FOR
 THE OAKS COMMERCE
 BELMONT, NORTH CAROLINA

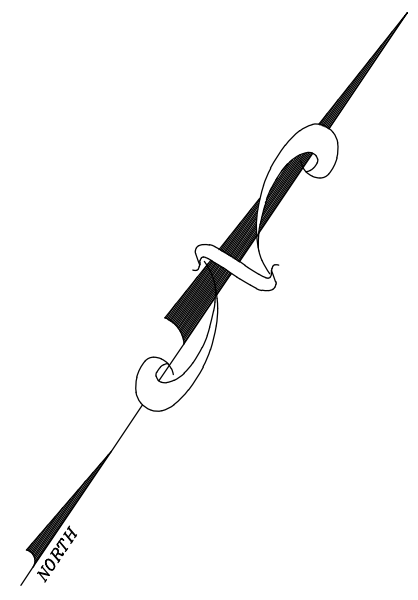
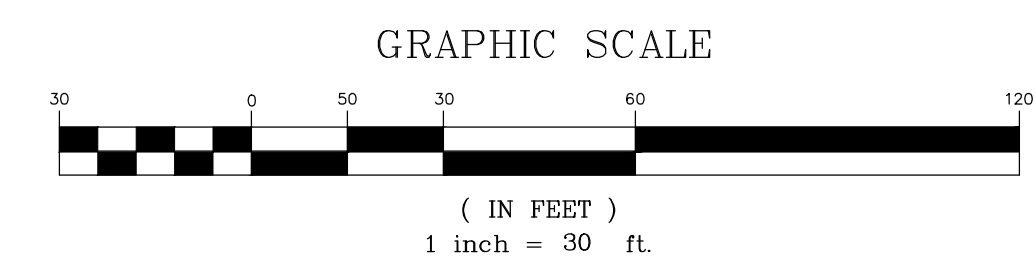
CROW HOLDINGS
 INDUSTRIAL
 4064 COLONY ROAD, SUITE 405,
 CHARLOTTE, NC 28211



NO.	DATE	REVISIONS
1	09/01/2023	REVISED PER COMMENTS
2	07/28/2023	REVISED PER COMMENTS
3	07/20/2023	REVISED PER COMMENTS
4	05/10/2023	REVISED PER COMMENTS

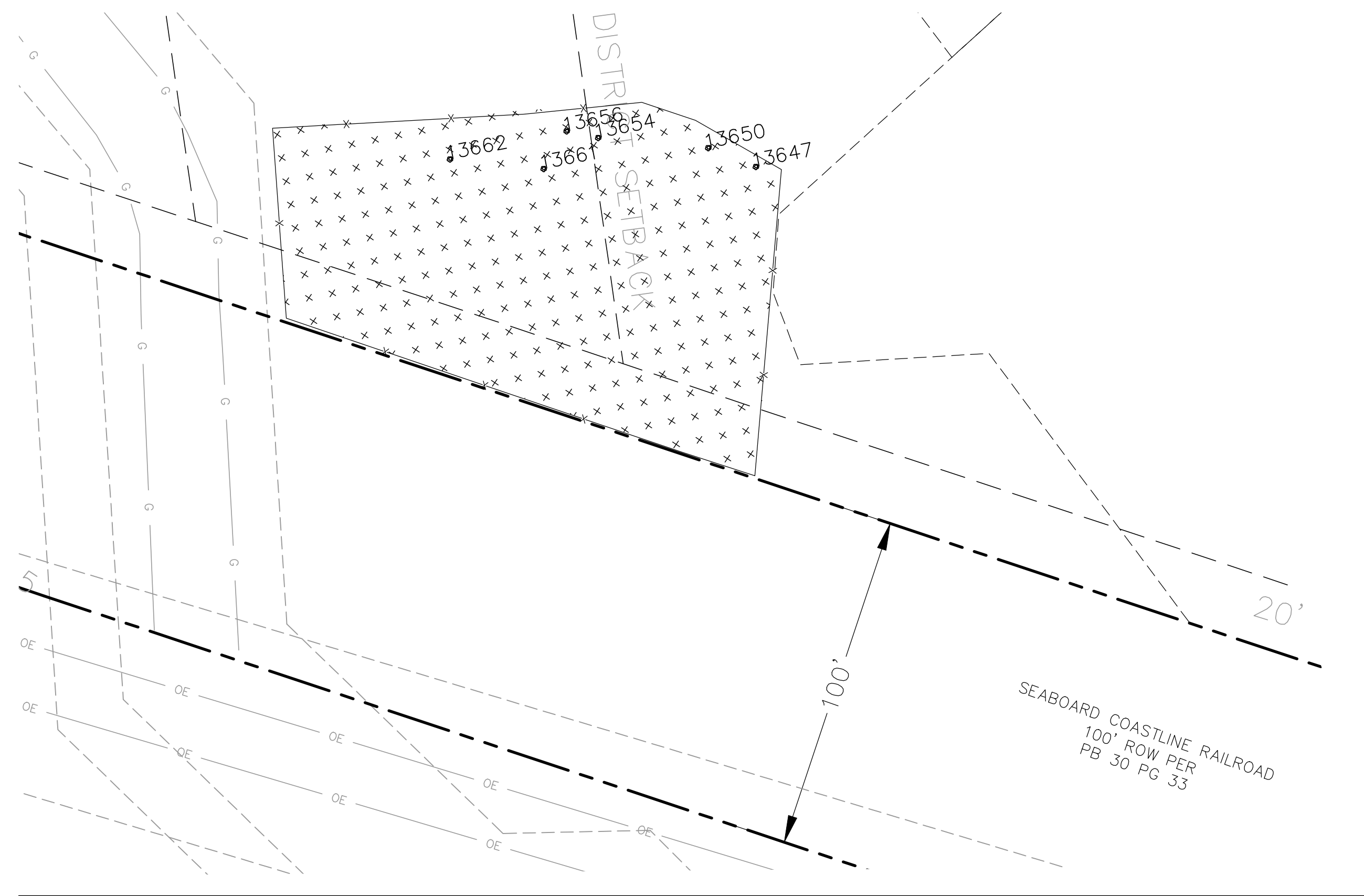
JOB # 22011
 DATE: 03/24/22
 SCALE: 1" = 100'
 DRAWN BY: JAW
 APPROVED BY: JCO

L4.1



October 05, 2022, 6:08am, P:\fields...
 P:\22011 The Oaks Commerce\Draw\22011 L&L Tree Inventory.dwg

TREE SAVE AREA A



TREE SAVE AREA B CALCULATIONS

TREE ID NUMBER	COMMON NAME	CONDITION	DBH	CLASSIFICATION	TSA MULTIPLIER	CRZ AREA	TSA CREDIT
13647	Water oak	Good	13	Protected	1	530.93	530.93
13650	Sweetgum	Good	15	Protected	1	706.86	706.86
13654	Sweetgum	Dead	14				
13656	Sweetgum	Good	10	Protected	1	314.16	314.16
13661	Southern red oak	Good	15	Protected	1	706.86	706.86
13662	Water oak	Fair	22	Significant	1.5	1,520.53	2,280.80
TOTAL TSA CREDIT (AREA B)							4,539.60 SF
PHYSICAL AREA (AREA B)							18,486.97 SF

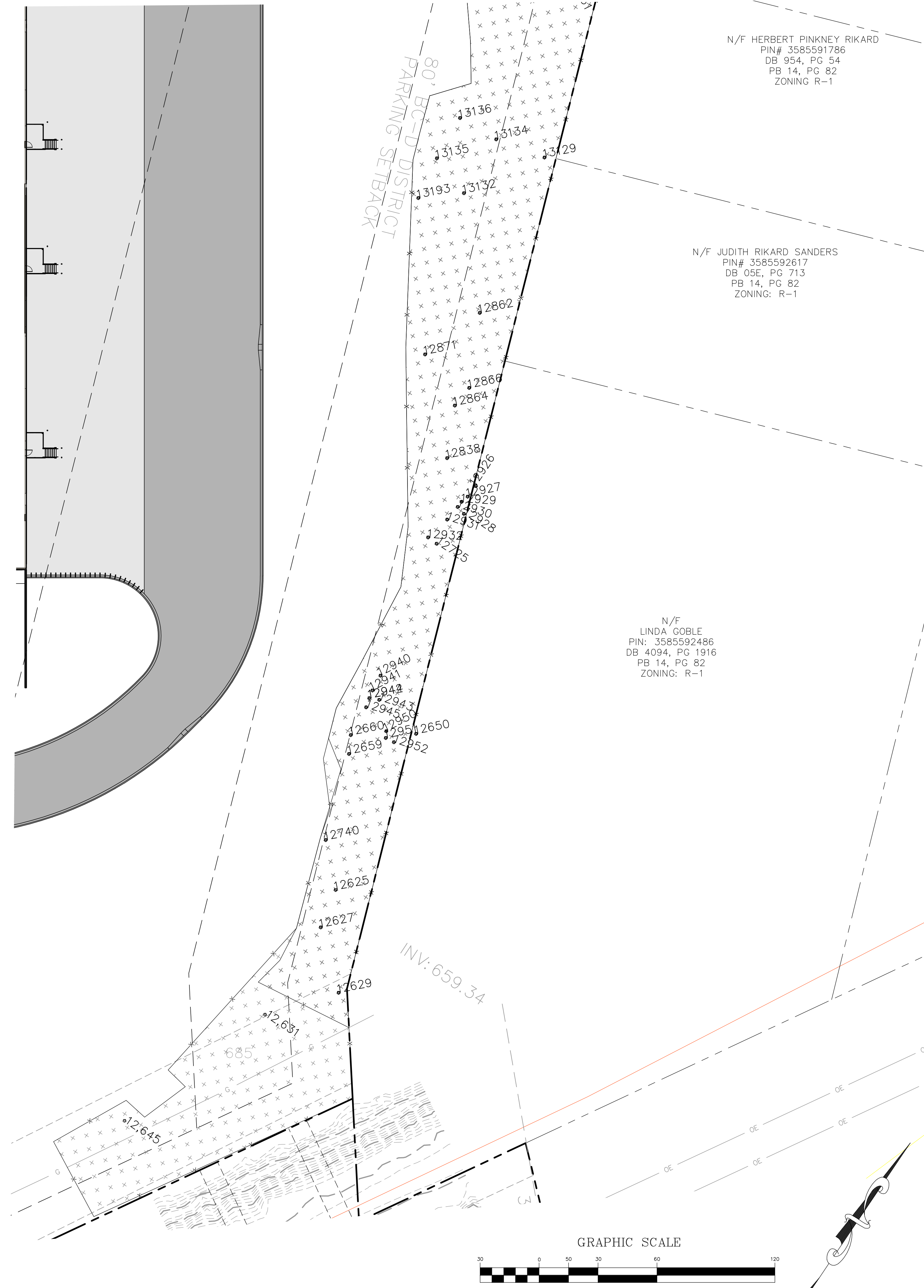
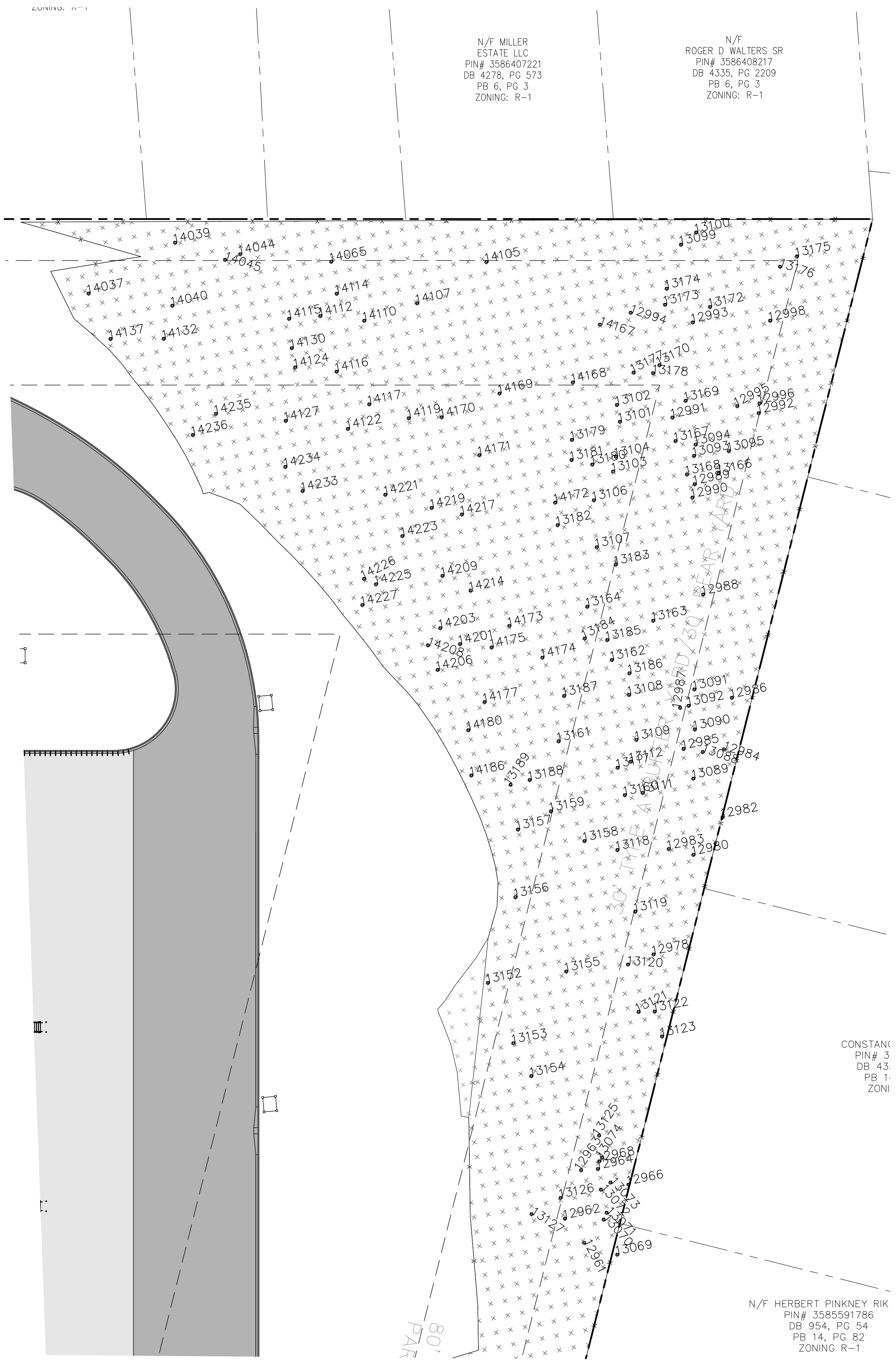
TREE SAVE AREA B

TREE SAVE AREA C CALCULATIONS

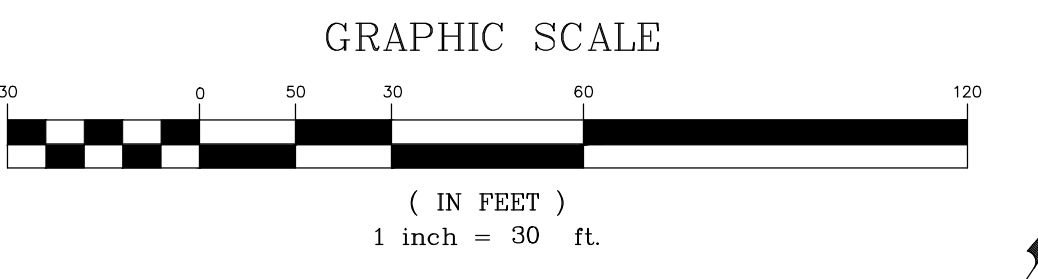
TREE ID NUMBER	COMMON NAME	CONDITION	DBH	CLASSIFICATION	TSA MULTIPLIER	CRZ AREA	TSA CREDIT
12627	White oak	Good	17	Protected	1	907.92	907.92
12629	Tulip tree	Fair	22	Significant	1.5	1,520.53	2,280.80
12650	White oak		0			0.00	0.00
12659	Swamp chestnut oak	Good	16	Protected	1	804.25	804.25
12660	Swamp chestnut oak	Poor	22	Significant	1.5	0.00	0.00
12725	Pine	Good	27	Significant	1.5	2,290.22	3,435.33
12838	Tulip tree	Good	18	Significant	1.5	1,017.88	1,526.81
12862	Tulip tree	Good	16	Protected	1	804.25	804.25
12864	Loblolly pine	Good	16	Protected	1	804.25	804.25
12866	Loblolly pine	Good	17	Protected	1	907.92	907.92
12871	Tulip tree	Good	13	Protected	1	530.93	530.93
12925	White oak	Good	25	Significant	1.5	1,963.50	2,945.24
12926	Tulip tree	Good	18	Significant	1.5	1,017.88	1,526.81
12927	Southern red oak	Good	25	Significant	1.5	1,963.50	2,945.24
12928	Tulip tree	Good	15	Protected	1	706.86	706.86
12929	Black oak	Good	25	Significant	1.5	1,963.50	2,945.24
12930	Black oak	Good	23	Significant	1.5	1,661.90	2,492.85
12931	Sweetgum	Good	15	Protected	1	706.86	706.86
12932	Chestnut oak	Good	12	Protected	1	452.39	452.39
12940	Tulip tree	Good	12	Protected	1	452.39	452.39
12941	Tulip tree	Fair	13	Protected	1	530.93	530.93
12942	Tulip tree	Good	14	Protected	1	615.75	615.75
12943	Tulip tree	Good	16	Protected	1	804.25	804.25
12944	Tulip tree	Good	15	Protected	1	706.86	706.86
12945	Tulip tree	Good	11	Protected	1	380.13	380.13
12950	Red maple	Good	15	Protected	1	706.86	706.86
12951	Tulip tree	Good	19	Significant	1.5	1,134.11	1,701.17
12952	Tulip tree	Good	12	Protected	1	452.39	452.39
12961	White oak	Fair	36	Heritage	2	4,071.50	8,143.01
12962	White oak	Good	20	Significant	1.5	1,256.64	1,884.96
12963	Southern red oak	Good	11	Protected	1	380.13	380.13
12964	American beech	Good	15	Protected	1	706.86	706.86
12966	Pine	Good	16	Protected	1	804.25	804.25
12967	Pine	Dead	11	Protected	1	0.00	0.00
12968	Tulip tree	Poor	12	Protected	1	0.00	0.00
12978	Tulip tree	Good	13	Protected	1	530.93	530.93
12980	Southern red oak	Good	40	Heritage	2	5,026.55	10,053.10
12983	Tulip tree	Fair	17	Protected	1	907.92	907.92
12984	Tulip tree	Good	35	Significant	1.5	3,848.45	5,772.68
12985	Tulip tree	Good	30	Significant	1.5	2,827.43	4,241.15
12986	Tulip tree	Good	15	Protected	1	706.86	706.86
12988	Chestnut oak	Poor	14	Protected	1	0.00	0.00
12989	Tulip tree	Good	18	Significant	1.5	1,017.88	1,526.81
12990	Tulip tree	Poor	10	Protected	1	0.00	0.00
12991	Tulip tree	Good	25	Significant	1.5	1,963.50	2,945.24
12992	Tulip tree	Poor	22	Significant	1.5	0.00	0.00
12993	Tulip tree	Fair	14	Protected	1	615.75	615.75
12994	Tulip tree	Fair	16	Protected	1	804.25	804.25
12995	Chestnut oak	Poor	14	Protected	1	0.00	0.00
12996	Chestnut oak	Poor	17	Protected	1	0.00	0.00
12998	Tulip tree	Fair	13	Protected	1	530.93	530.93
13070	Tulip tree	Poor	12	Protected	1	0.00	0.00
13071	Black cherry	Good	11	Protected	1	380.13	380.13
13072	American beech	Fair	12	Protected	1	452.39	452.39
13073	Tulip tree	Dead	11	Protected	1	0.00	0.00
13074	Boxelder	Fair	36	Heritage	2	4,071.50	8,143.01
13088	Tulip tree	Fair	10	Protected	1	314.16	314.16
13089	Tulip tree	Poor	26	Significant	1.5	0.00	0.00
13090	American beech	Fair	13	Protected	1	530.93	530.93
13091	Tulip tree	Fair	10	Protected	1	314.16	314.16
13092	Tulip tree	Fair	10	Protected	1	314.16	314.16
13093	Tulip tree	Poor	13	Protected	1	0.00	0.00
13094	Tulip tree	Fair	16	Protected	1	804.25	804.25
13095	Boxelder	Fair	10	Protected	1	314.16	314.16
13099	Tulip tree	Poor	11	Protected	1	0.00	0.00
13100	Tulip tree	Poor	11	Protected	1	0.00	0.00
13101	Tulip tree	Poor	10	Protected	1	0.00	0.00
13102	Tulip tree	Poor	10	Protected	1	0.00	0.00
13103	Tulip tree	Fair	16	Protected	1	804.25	804.25
13104	Tulip tree	Fair	12	Protected	1	452.39	452.39
13106	American beech	Good	10	Protected	1	314.16	314.16
13107	Tulip tree	Poor	11	Protected	1	0.00	0.00
13108	American beech	Fair	10	Protected	1	314.16	314.16
13109	Boxelder	Fair	10	Protected	1	314.16	314.16
13111	Tulip tree	Fair	10	Protected	1	314.16	314.16
13112	Boxelder	Fair	0			0.00	0.00
13117	Red maple	Fair	14	Protected	1	615.75	615.75
13118	Tulip tree	Fair	13	Protected	1	530.93	530.93
13119	Tulip tree	Fair	13	Protected	1	530.93	530.93
13120	Tulip tree	Poor	13	Significant	1.5	0.00	0.00
13121	Tulip tree	Fair	17	Protected	1	907.92	907.92
13122	American beech	Good	14	Protected	1	615.75	615.75
13123	Tulip tree	Good	16	Protected	1	804.25	804.25
13125	Tulip tree	Fair	0			0.00	0.00
13126	Tulip tree	Good	14	Protected	1	615.75	615.75
13127	Tulip tree	Poor	11	Protected	1	0.00	0.00
13129	Tulip tree	Fair	10	Protected	1	314.16	314.16

13132	White ash	Poor	11	Protected	1	0.00	0.00
13134	Mockernut hickory	Poor	16	Protected	1	0.00	0.00
13135	Pine	Fair	20	Significant	1.5	1,256.64	1,884.96
13136	Sweetgum	Poor	13	Protected	1	530.93	530.93
13152	Southern red oak	Fair	10	Protected	1	314.16	314.16
13153	Common persimmon	Good	13	Protected	1	530.93	530.93
13154	White ash	Fair	17	Protected	1	907.92	907.92
13155	Sweetgum	Fair	11	Protected	1	380.13	380.13
13156	Tulip tree	Fair	18	Significant	1.5	1,017.88	1,526.81
13157	American beech	Good	25	Significant	1.5	1,963.50	2,945.24
13158	Mockernut hickory	Fair	11	Protected	1	380.13	380.13
13159	Mockernut hickory	Fair	11	Protected	1	380.13	380.13
13160	Blackgum	Fair	10	Protected	1	314.16	314.16
13161	White oak	Good	24	Significant	1.5	1,809.56	2,714.34
13162	Eastern red cedar	Fair	18	Significant	1.5	1,017.88	1,526.81
13163	Mockernut hickory	Good	15	Protected	1	706.86	706.86
13164	Sourwood	Poor	16	Protected	1	0.00	0.00
13166	Red maple	Poor	22	Significant	1.5	0.00	0.00
13167	Tulip tree	Fair	24	Significant	1.5	1,809.56	2,714.34
13168	Sourwood	Fair	11	Protected	1	380.13	380.13
13169	Sourwood	Fair	15	Protected	1	706.86	706.86
13170	Chestnut oak	Good	35	Significant	1.5	3,848.45	5,772.68
13172	Tulip tree	Fair	16	Significant	1.5	804.25	1,206.37
13173	Tulip tree	Fair	30	Significant	1.5	2,827.43	4,241.15
13174	Tulip tree	Poor	22	Significant	1.5	0.00	0.00
13175	Cherry	Fair	12	Protected	1	452.39	452.39
13176	White oak	Poor	15	Protected	1	0.00	0.00
13177	White oak	Poor	11	Protected	1	0.00	0.00
13178	American beech	Good	11	Protected	1	380.13	380.13
13179	Chestnut oak	Good	50	Heritage	2	7,853.98	15,707.96
13180	White ash	Fair	14	Protected	1	615.75	615.75
13181	Chestnut oak	Good	33	Significant	1.5	3,421.19	5,131.79
13182	Sourwood	Fair	12	Protected	1	452.39	452.39
13183	Sourwood	Fair	13	Protected	1	530.93	530.93
13184	Mockernut hickory	Fair	14	Protected	1	615.75	615.75
13185	Mockernut hickory	Fair	10	Protected	1	314.16	314.16
13186	Pignut hickory	Fair	10	Protected	1	314.16	314.16
13187	Pignut hickory	Dead	10	Protected	1	0.00	0.00
13188	Hickory	Dead	11	Protected	1	0.00	0.00
13189	American beech	Good	13	Protected	1	530.93	530.93
14037	Swamp chestnut oak	Fair	12	Protected	1	452.39	452.39
14039	Ligustrum	Good	24	Significant	1.5	1,809.56	2,714.34
14040	Tree of heaven	Fair	14	Protected	1	615.75	615.75
14044	Tree of heaven	Fair	11	Protected	1	380.13	380.13
14045	Tree of heaven	Fair	11	Protected	1	380.13	380.13
14065	Tulip tree	Fair	35	Significant	1.5	3,848.45	5,772.68
14105	Cherry	Poor	12	Protected	1	0.00	0.00
14107	White oak	Dead	20	Significant	1.5	0.00	0.00
14110	Southern red oak	Good	32	Significant	1.5	3,216.99	4,825.49
14112	White oak	Poor	13	Protected	1	0.00	0.00
14114	White oak	Fair	23	Significant	1.5	1,661.90	2,492.85
14115	Hackberry	Good	13	Protected	1	530.93	530.93
14116	White oak	Good	43	Heritage	2	5,808.80	11,617.61
14117	White oak	Good	28	Significant	1.5	2,463.01	3,694.51
14119	American beech	Fair	10	Protected	1	314.16	314.16
14122	American beech	Good	12	Protected	1	452.39	452.39
14124	White oak	Dead	15	Protected	1	0.00	0.00
14127	Hackberry	Good	28	Significant	1.5	2,463.01	3,694.51
14130	Hackberry	Fair	13	Protected	1	530.93	530.93
14132	Ligustrum	Good	10	Protected	1	314.16	314.16
14137	Sweetgum	Good	10	Protected	1	314.16	314.16
14167	Black cherry	Fair	10	Protected	1	314.16	314.16
14168	White oak	Good	22	Significant	1.5	1,520.53	2,280.80
14169	Tulip tree	Good	13	Protected	1	530.93	530.93
14170	White ash	Fair	11	Protected	1	380.13	380.13
14171	American beech	Fair	25	Significant	1.5	1,963.50	2,945.24
14172	White oak	Fair	18	Significant	1.5	1,017.88	1,526.81
14173	White ash	Fair	12	Protected	1	452.39	452.39
14174	White ash	Fair	11	Protected	1	380.13	380.13
14175	Chestnut oak	Fair	15	Protected	1	706.86	706.86
14177	Black ash	Fair	11	Protected	1	380.13	380.13
14180	White ash	Dead	14	Protected	1	0.00	0.00
14186	Mockernut hickory	Fair	15	Protected	1	706.86	706.86
14201	Chestnut oak	Good	18	Significant	1.5	1,017.88	1,526.81
14203	Chestnut oak						

October 05, 2023, 6:09am, P:\fields
 P:\2023\The Oaks Commercial\Draw\22011 L&L Tree Inventory.dwg



TREE SAVE AREA C
 *SEE SHEET L4.2 FOR CALCULATIONS



N/F MILLER ESTATE LLC
 PIN# 3586407221
 DB 4278, PG 573
 PB 6, PG 3
 ZONING: R-1

N/F ROGER D WALTERS SR
 PIN# 3586408217
 DB 4335, PG 2209
 PB 8, PG 3
 ZONING: R-1

N/F HERBERT PINKNEY RIKARD
 PIN# 3585591786
 DB 954, PG 54
 PB 14, PG 82
 ZONING R-1

N/F JUDITH RIKARD SANDERS
 PIN# 3585592617
 DB 05E, PG 713
 PB 14, PG 82
 ZONING: R-1

N/F LINDA GOBLE
 PIN: 3585592486
 DB 4094, PG 1916
 PB 14, PG 82
 ZONING: R-1

N/F HERBERT PINKNEY RIKARD
 PIN# 3585591786
 DB 954, PG 54
 PB 14, PG 82
 ZONING R-1

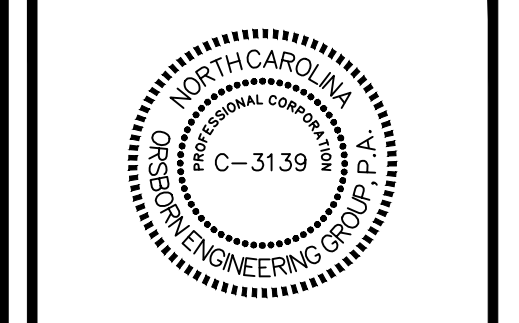
CONSTANT
 PIN# 3
 DB 43
 PB 1
 ZONI

ORSBORN
ENGINEERING GROUP

605 LEXINGTON AVENUE, SUITE 301
 CHARLOTTE, NC 28203
 P 704-749-1432
 www.orsborn-eng.com

COMPLIANCE LANDSCAPE
 TREE SAVE AREAS FOR
THE OAKS COMMERCE
 BELMONT, NORTH CAROLINA

CROW HOLDINGS
 INDUSTRIAL
 4064 COLONY ROAD, SUITE 405,
 CHARLOTTE, NC 28211

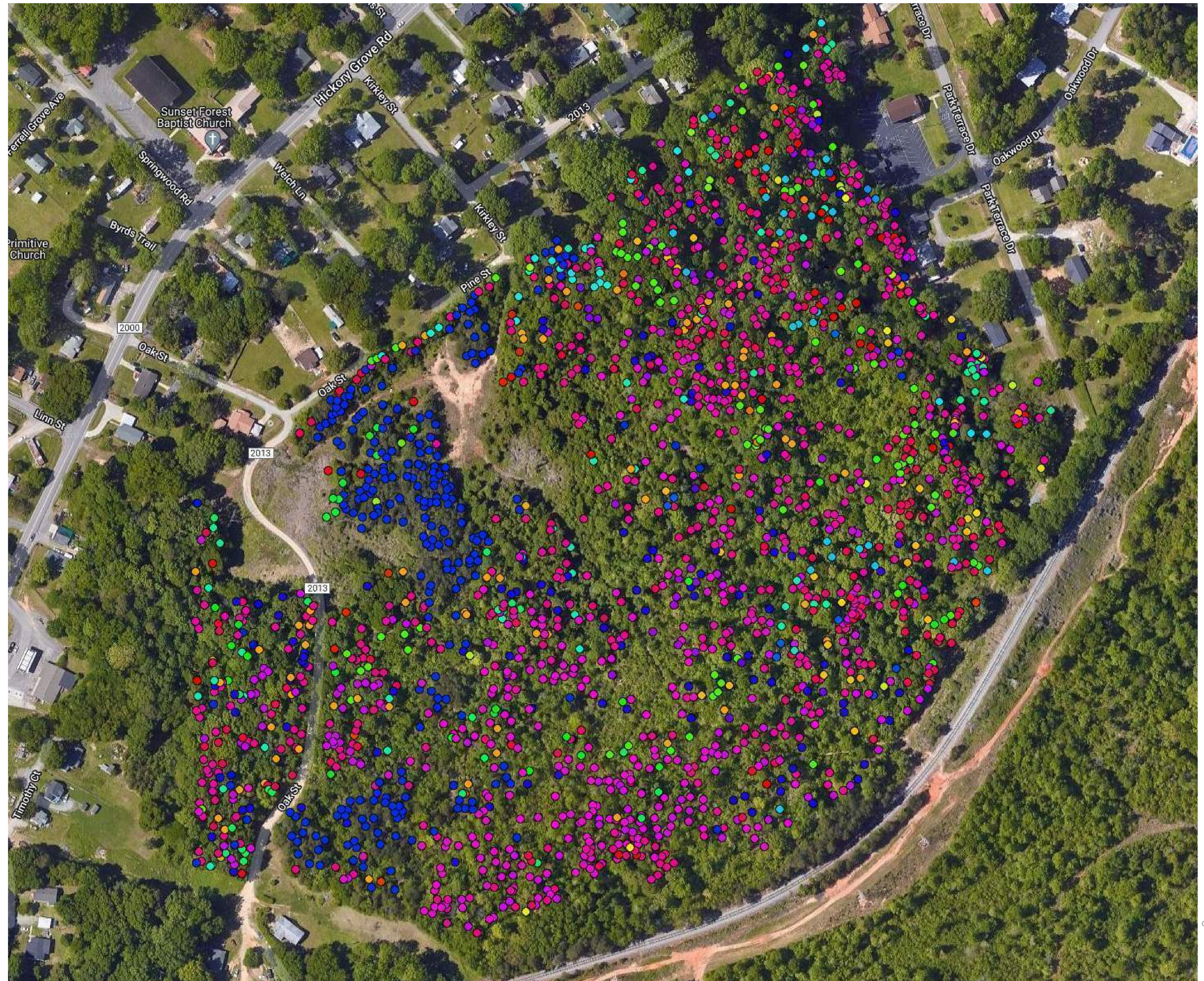


NO.	DATE	REVISIONS
1	05/10/2023	REVISED PER COMMENTS
2	06/20/2023	REVISED PER COMMENTS
3	07/28/2023	REVISED PER REVIEW COMMENTS

JOB # 22011
 DATE: 03/24/22
 SCALE: 1" = 100'
 DRAWN BY: JAW
 APPROVED BY: JCO

L4.3

- American beech (35)
- American elm (8)
- American sycamore (4)
- Atlantic white cedar
- Bitternut hickory (3)
- Black ash (2)
- Black cherry (107)
- Black oak (25)
- Black walnut (6)
- Blackgum (6)
- Blackjack oak
- Boxelder (7)
- Bradford pear (3)
- Cedar elm (3)
- Cherry (6)
- Chestnut oak (76)
- Common persimmon (7)
- Dogwood (5)
- Eastern cottonwood (20)
- Eastern red cedar (15)
- Eastern redbud (3)
- Elm (25)
- Green ash
- Hackberry (32)
- Hickory (42)
- Honeylocust (4)
- Ligustrum (24)
- Loblolly pine (5)
- Mockernut hickory (31)
- Northern white cedar
- Oak (2)
- Overcup oak
- Pignut hickory (8)
- Pin oak (3)
- Pine (299)
- Post oak (10)
- Red maple (121)
- Shagbark hickory (2)
- Shingle oak
- Shumard oak (3)
- Slippery elm (4)
- Sourwood (26)
- Southern magnolia (4)
- Southern red oak (195)
- Swamp chestnut oak (10)
- Sweetgum (300)
- Tree of heaven (14)
- Tulip tree (430)
- Water oak (190)
- White ash (53)
- White oak (161)
- Willow oak (19)
- Winged elm (5)



605 LEXINGTON AVENUE, SUITE 301
 CHARLOTTE, NC 28203
 P) 704-749-1432
 www.orsborn-eng.com

OAKS COMMERCE CENTER - TREE SPECIES MAP
 BELMONT, NORTH CAROLINA
 APRIL 13, 2022



April 13, 2022, 11:38am By: dave@d...
 P:\2021\The Oaks Commerce Center\2021\BGR\40.dwg

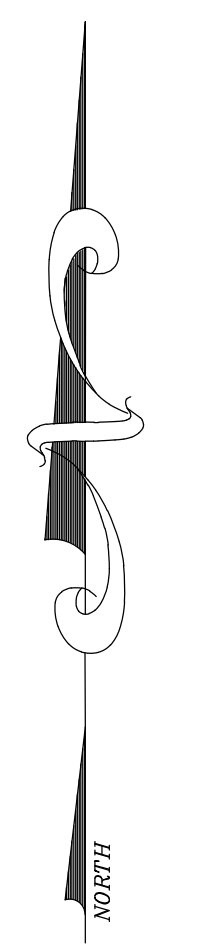


- Excellent
- Good (1,129)
- Fair (801)
- Poor (352)
- Dead (60)
- Not Specified (26)



605 LEXINGTON AVENUE, SUITE 301
 CHARLOTTE, NC 28203
 P) 704-749-1432
 www.orsborn-eng.com

OAKS COMMERCE CENTER - TREE CONDITION MAP
 BELMONT, NORTH CAROLINA
 APRIL 13, 2022



April 13, 2022 11:42am By: dskw44
 P:\2021\The Oaks Commerce Center\2021 R6640.dwg

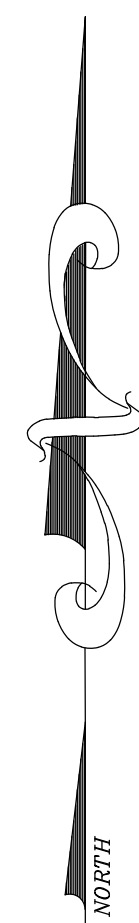


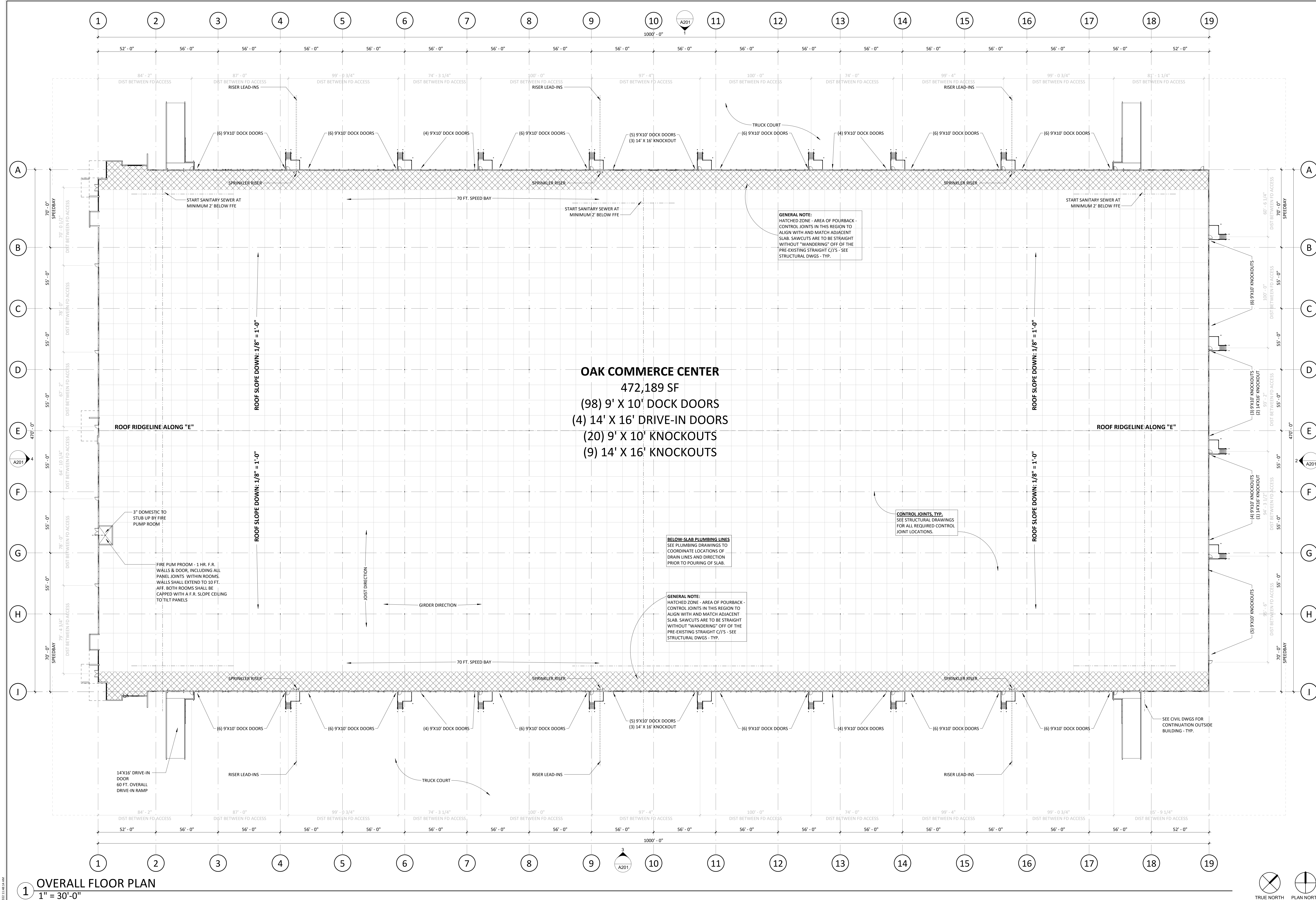
- 0-10in
- 10-18in (1,785)
- 18-36in (533)
- >36in (34)
- N/A (15)
- Not Specified



605 LEXINGTON AVENUE, SUITE 301
 CHARLOTTE, NC 28203
 P) 704-749-1432
 www.orsborn-eng.com

OAKS COMMERCE CENTER - TREE QUALIFYING MAP
 BELMONT, NORTH CAROLINA
 APRIL 13, 2022





OAK COMMERCE CENTER
 472,189 SF
 (98) 9' X 10' DOCK DOORS
 (4) 14' X 16' DRIVE-IN DOORS
 (20) 9' X 10' KNOCKOUTS
 (9) 14' X 16' KNOCKOUTS

GENERAL NOTE:
 HATCHED ZONE - AREA OF POURBACK - CONTROL JOINTS IN THIS REGION TO ALIGN WITH AND MATCH ADJACENT SLAB. SAWCUTS ARE TO BE STRAIGHT WITHOUT "WANDERING" OFF OF THE PRE-EXISTING STRAIGHT C/J'S - SEE STRUCTURAL DWGS - TYP.

BELOW-SLAB PLUMBING LINES
 SEE PLUMBING DRAWINGS TO COORDINATE LOCATIONS OF DRAIN LINES AND DIRECTION PRIOR TO POURING OF SLAB.

GENERAL NOTE:
 HATCHED ZONE - AREA OF POURBACK - CONTROL JOINTS IN THIS REGION TO ALIGN WITH AND MATCH ADJACENT SLAB. SAWCUTS ARE TO BE STRAIGHT WITHOUT "WANDERING" OFF OF THE PRE-EXISTING STRAIGHT C/J'S - SEE STRUCTURAL DWGS - TYP.

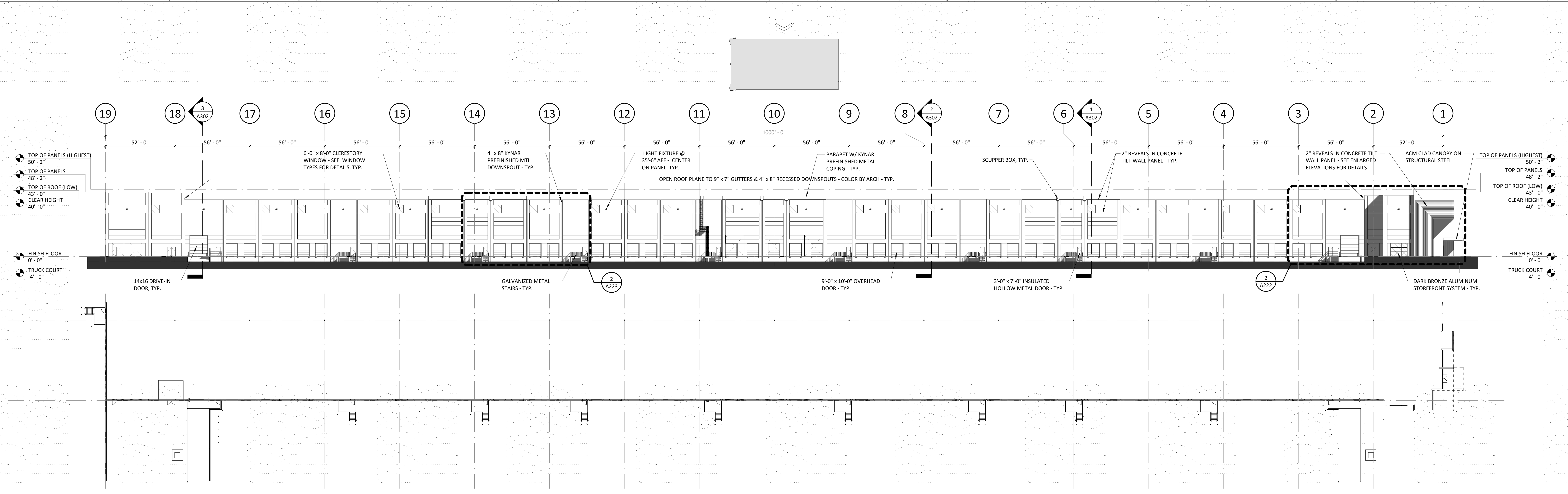
CONTROL JOINTS, TYP.
 SEE STRUCTURAL DRAWINGS FOR ALL REQUIRED CONTROL JOINT LOCATIONS.

FIRE PUM ROOM - 1 HR. F.R. WALLS & DOOR, INCLUDING ALL PANEL JOINTS WITHIN ROOMS. WALLS SHALL EXTEND TO 10 FT. AFF. BOTH ROOMS SHALL BE CAPPED WITH A F.R. SLOPE CEILING TO TILT PANELS.

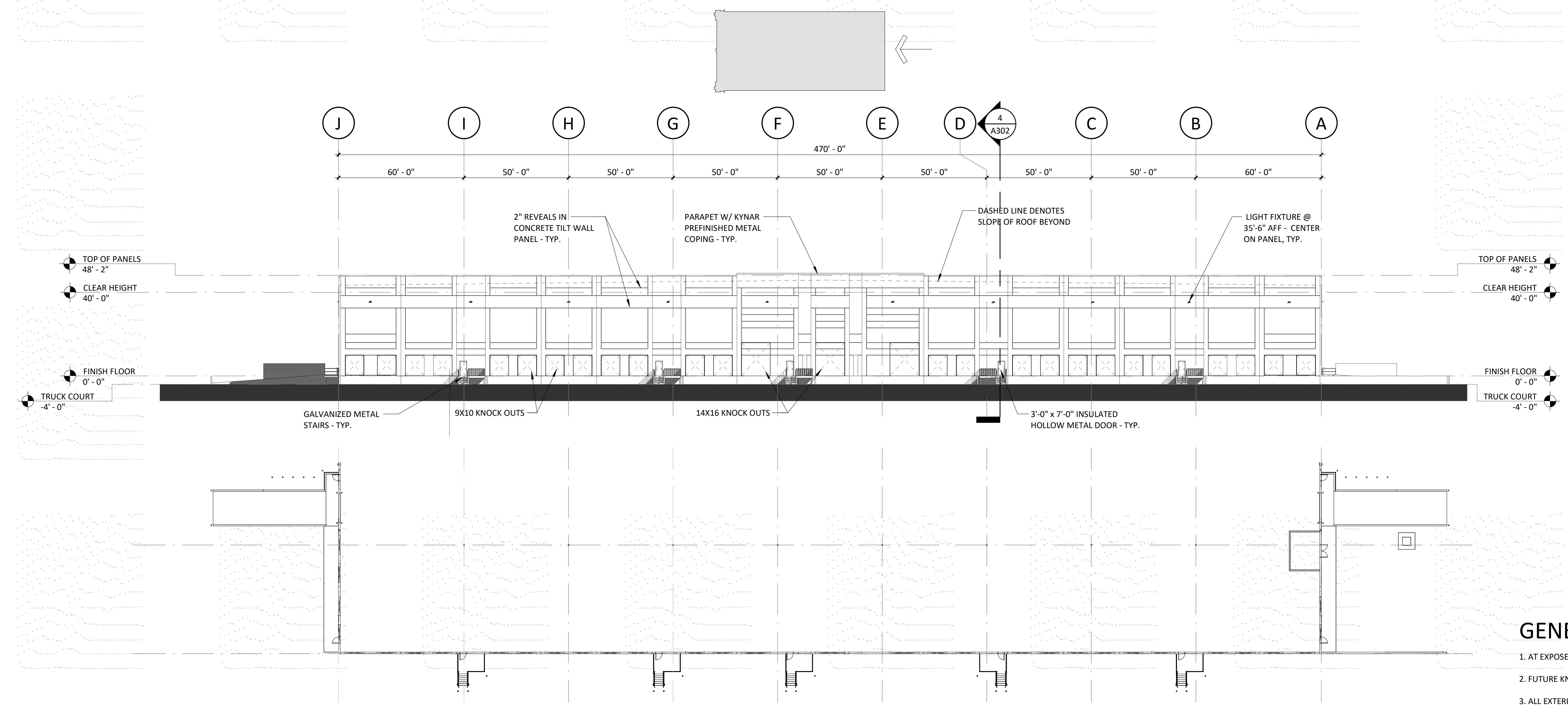
14'X16' DRIVE-IN DOOR
 60 FT. OVERALL DRIVE-IN RAMP

SEE CIVIL DWGS FOR CONTINUATION OUTSIDE BUILDING - TYP.

1 OVERALL FLOOR PLAN
 1" = 30'-0"



1 OVERALL ELEVATION - TRUCK COURT - PLAN NORTH
1" = 30'-0"



2 OVERALL SIDE ELEVATION - PLAN EAST
1" = 30'-0"

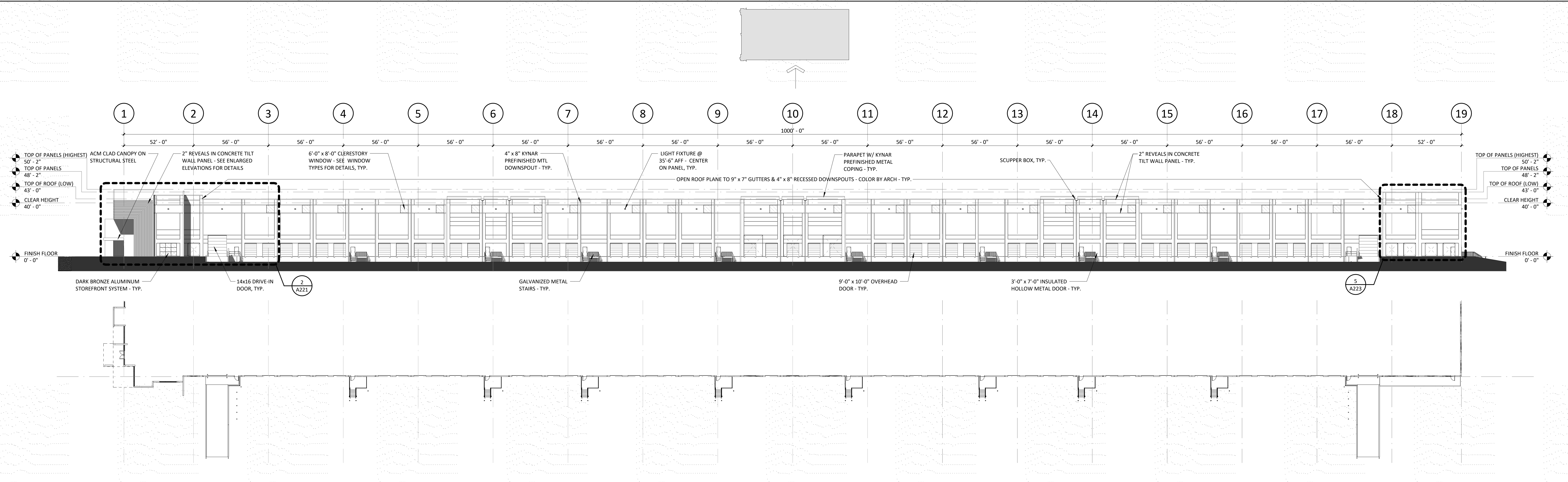
GENERAL NOTES:

1. AT EXPOSED EDGE OF PANELS, TURN AND CONTINUE REVEALS TO MATCH FRONT OF PANEL, U.N.O.
2. FUTURE KNOCK-OUT LOCATIONS ARE SHOWN WITH DASHED LINES. THEY ARE TO BE FORMED OUT AS REVEALS IN THE PANELS, U.N.O.
3. ALL EXTERIOR WALL SURFACES TO RECEIVE MEDIUM SAND TEXTURE - SHERWIN WILLIAMS TEXTURE COATING OR APPROVED EQUAL, COLOR TBD
4. ACCENT COLORS AND LOCATIONS TBD AND APPROVED IN WRITING BY OWNER
5. GROUT SOLID ALL LARGE PENETRATIONS THROUGH CONCRETE WALLS. CAULK WITH BACKER ROD AT SMALL PENETRATIONS.

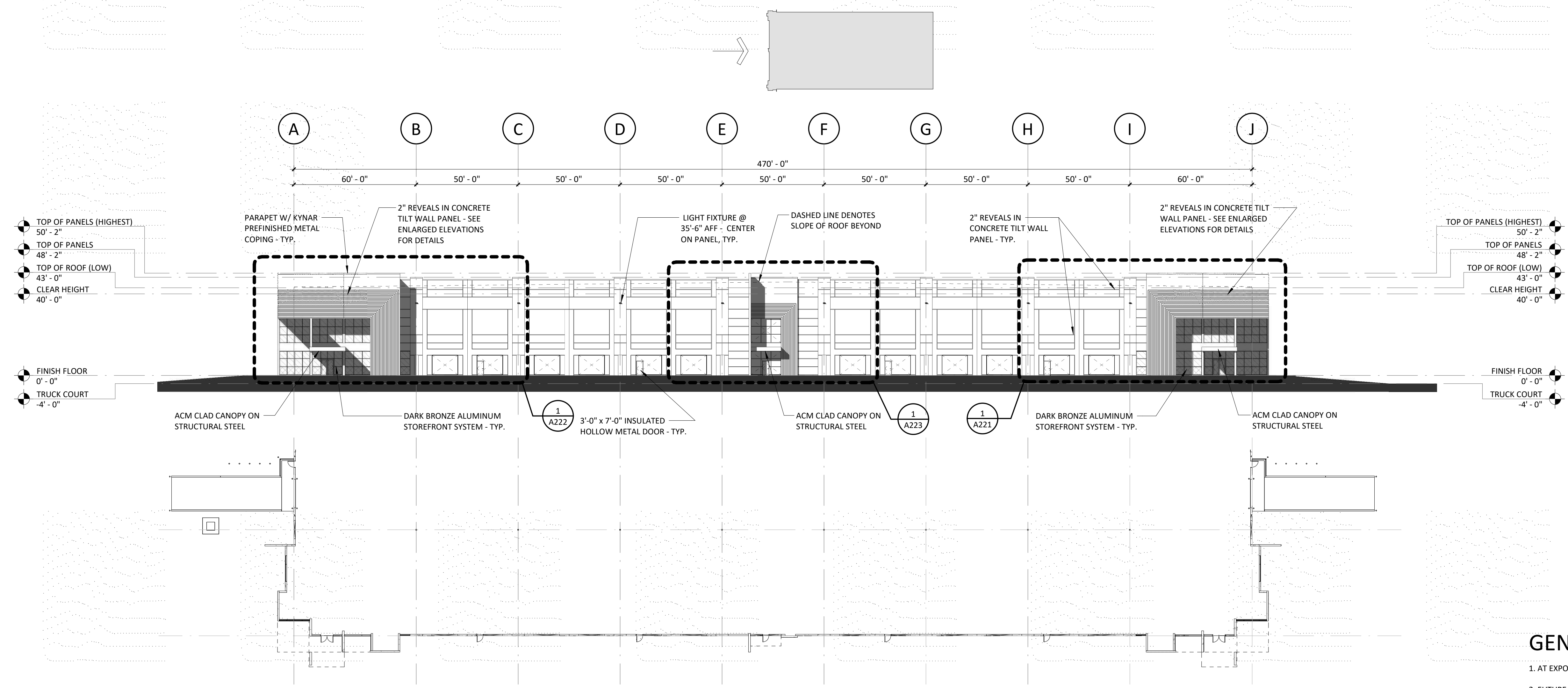
REVISIONS	
MARK	DATE
1	15-08-2022
	ISSUED FOR CONSTRUCTION

NOTE:
MINIMUM 40 FT. CLEAR HEIGHT UNDER STRUCTURE, TYPICAL.
PROJECT NUMBER: C21190
PERMIT TRACKING:
DRAWING STATUS:
NOT FOR CONSTRUCTION
ISSUED FOR BIDDING
ISSUED FOR CONSTRUCTION

SHEET TITLE:
ELEVATIONS
SHEET NUMBER:
A201
©2022 MERRIMAN SCHMITT ARCHITECTS, INC.



1 OVERALL ELEVATION - TRUCK COURT PLAN SOUTH
1" = 30'-0"



2 OVERALL SIDE ELEVATION - PLAN WEST
1" = 30'-0"

- GENERAL NOTES:**
1. AT EXPOSED EDGE OF PANELS, TURN AND CONTINUE REVEALS TO MATCH FRONT OF PANEL, U.N.O.
 2. FUTURE KNOCK-OUT LOCATIONS ARE SHOWN WITH DASHED LINES. THEY ARE TO BE FORMED OUT AS REVEALS IN THE PANELS, U.N.O.
 3. ALL EXTERIOR WALL SURFACES TO RECEIVE MEDIUM SAND TEXTURE - SHERWIN WILLIAMS TEXTURE COATING OR APPROVED EQUAL, COLOR TBD
 4. ACCENT COLORS AND LOCATIONS TBD AND APPROVED IN WRITING BY OWNER
 5. GROUT SOLID ALL LARGE PENETRATIONS THROUGH CONCRETE WALLS. CAULK WITH BACKER ROD AT SMALL PENETRATIONS.

MARK	DATE	REVISIONS
1	15-08-2022	ISSUED FOR CONSTRUCTION

NOTE:
MINIMUM 40 FT. CLEAR HEIGHT UNDER STRUCTURE, TYPICAL.
PROJECT NUMBER: C21190
PERMIT TRACKING:
DRAWING STATUS:
NOT FOR CONSTRUCTION
ISSUED FOR BIDDING
ISSUED FOR CONSTRUCTION

SHEET TITLE:
ELEVATIONS
SHEET NUMBER:
A202
©2022 MERRIMAN SCHMITT ARCHITECTS, INC.



15.06.2023 11:46:17 AM