

# Riverview at South Fork – Belmont, NC

Neighborhood Meeting

September 8, 2022

PRESENTED BY:



# Shea Homes® History

## J.F Shea Construction Co.:

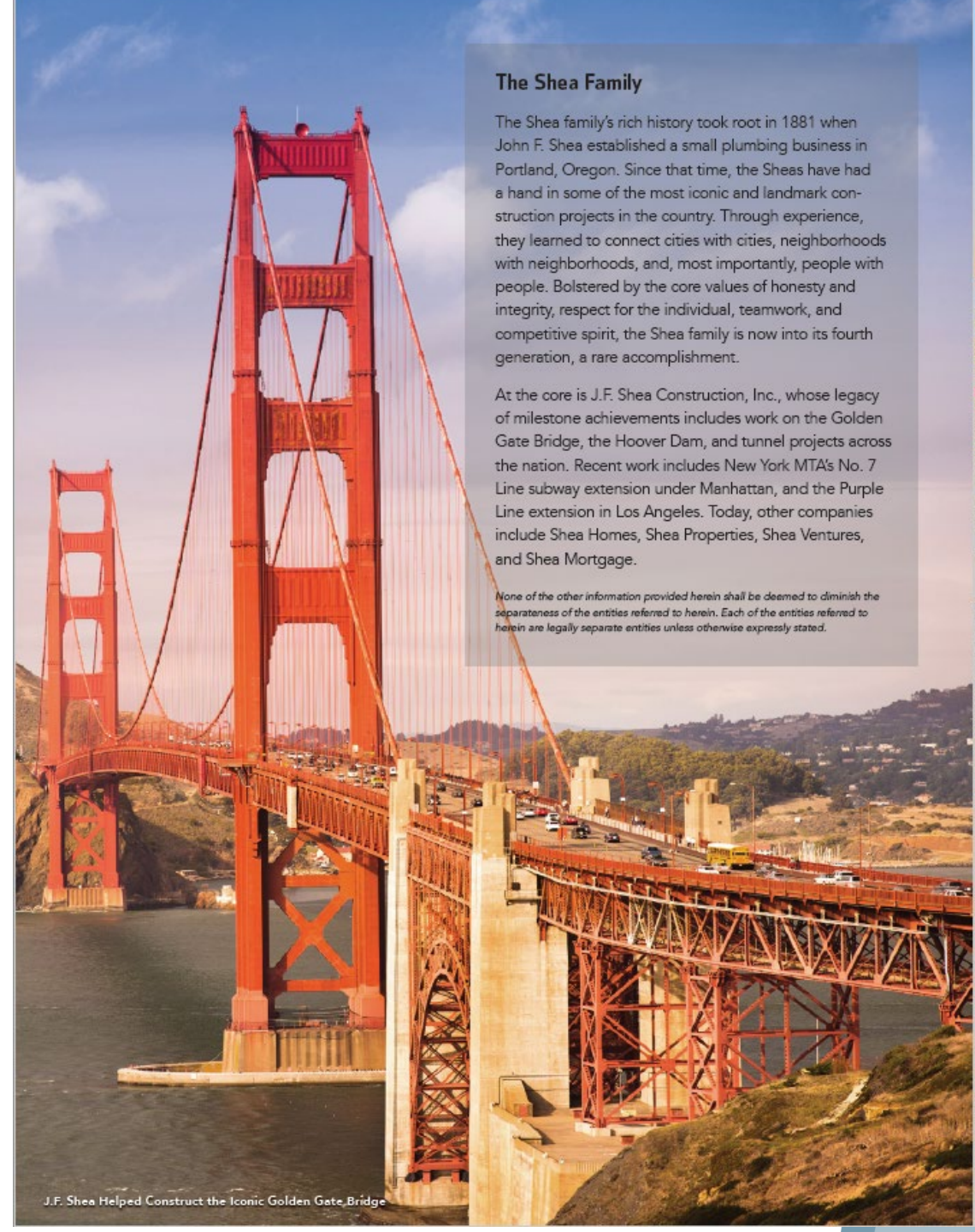
- Established in 1881 in Portland, Oregon as a plumbing company
- Family-owned and operated for four generations
- Previous construction projects include Golden Gate Bridge, Hoover Dam, tunnel projects in New York and Los Angeles

### The Shea Family

The Shea family's rich history took root in 1881 when John F. Shea established a small plumbing business in Portland, Oregon. Since that time, the Sheas have had a hand in some of the most iconic and landmark construction projects in the country. Through experience, they learned to connect cities with cities, neighborhoods with neighborhoods, and, most importantly, people with people. Bolstered by the core values of honesty and integrity, respect for the individual, teamwork, and competitive spirit, the Shea family is now into its fourth generation, a rare accomplishment.

At the core is J.F. Shea Construction, Inc., whose legacy of milestone achievements includes work on the Golden Gate Bridge, the Hoover Dam, and tunnel projects across the nation. Recent work includes New York MTA's No. 7 Line subway extension under Manhattan, and the Purple Line extension in Los Angeles. Today, other companies include Shea Homes, Shea Properties, Shea Ventures, and Shea Mortgage.

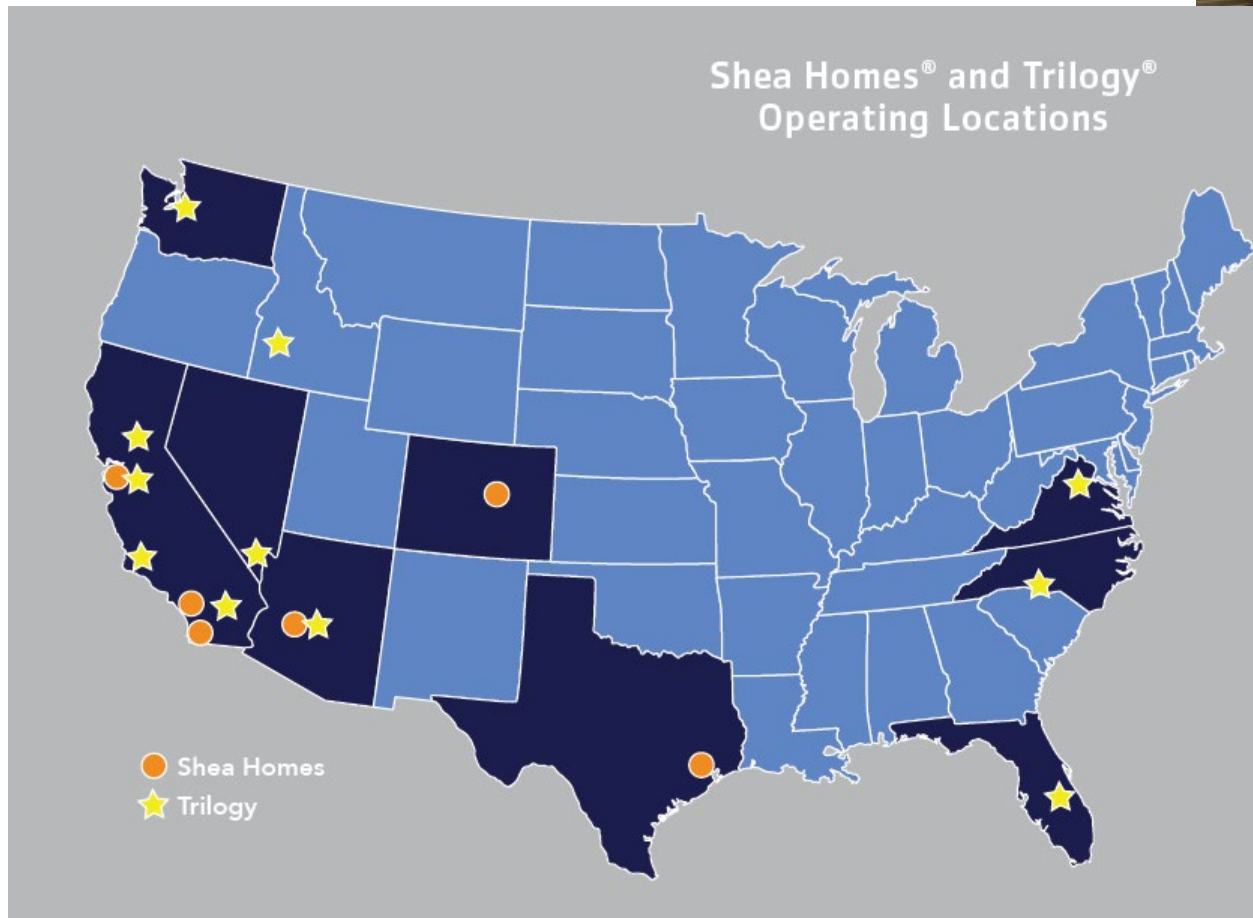
None of the other information provided herein shall be deemed to diminish the separateness of the entities referred to herein. Each of the entities referred to herein are legally separate entities unless otherwise expressly stated.

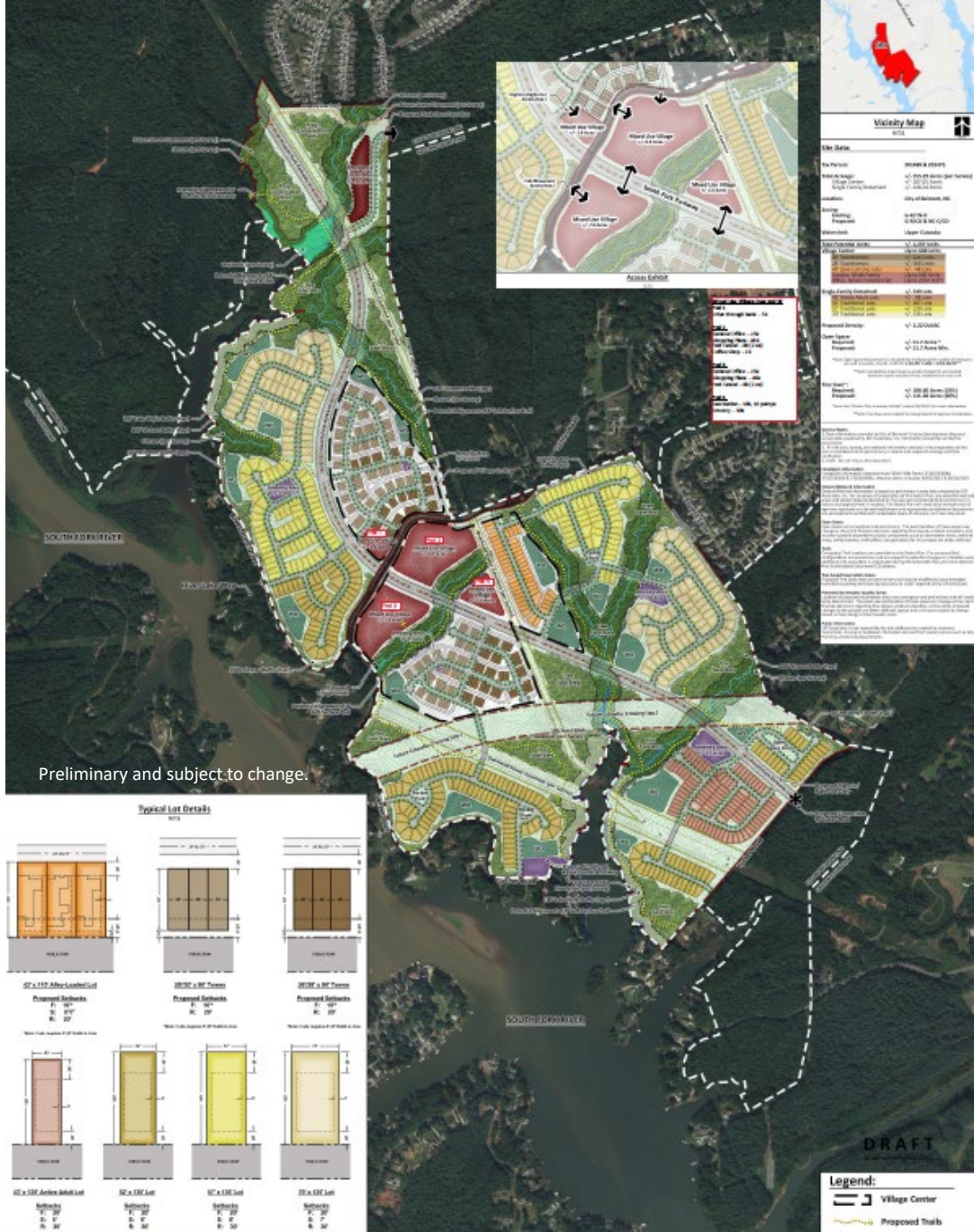


J.F. Shea Helped Construct the Iconic Golden Gate Bridge

# Who is Shea Homes?

- One of the largest private homebuilders in the country
- Present in 10 states, active in Charlotte market 20+ years

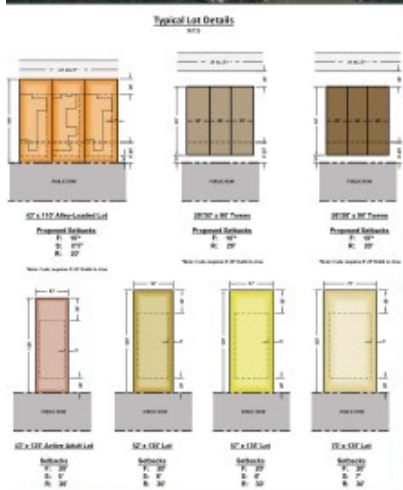




**Site Data**

Site Name	RI004 & RI005
Site Address	41-47th Avenue (East Fork Road)
City	City of Bethesda, MD
County	Montgomery County, MD
Project Name	RI004 & RI005
Project Description	RI004 & RI005
Project Area	1.22 Acres
Project Density	17-22 Units/Acre
Project Status	17-22 Units/Acre

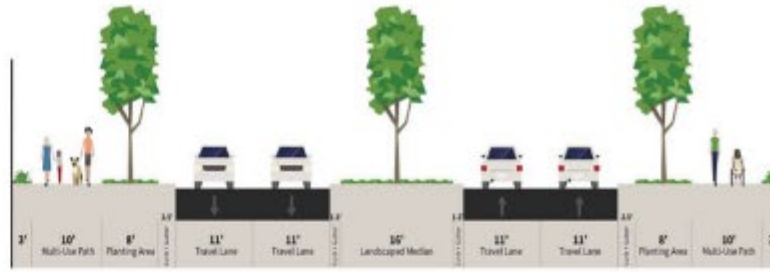
Preliminary and subject to change.



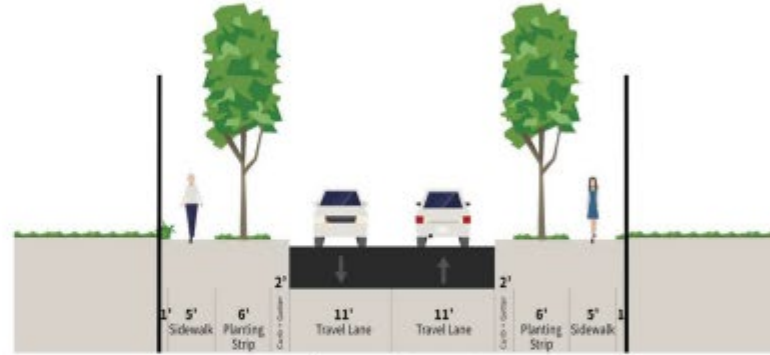


**Village Center/Access Exhibit**

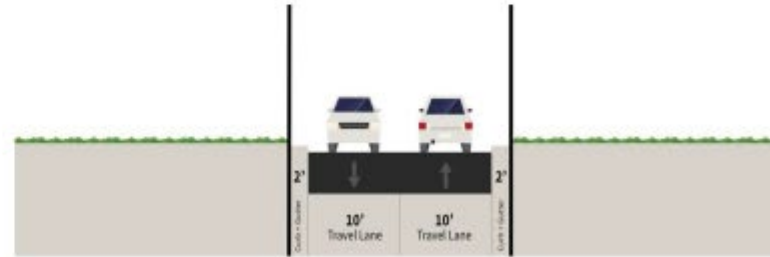
N.T.S.



**110' ROW - South Fork Parkway Section**  
N.T.S.



**50' ROW - Local Street Section**  
N.T.S.

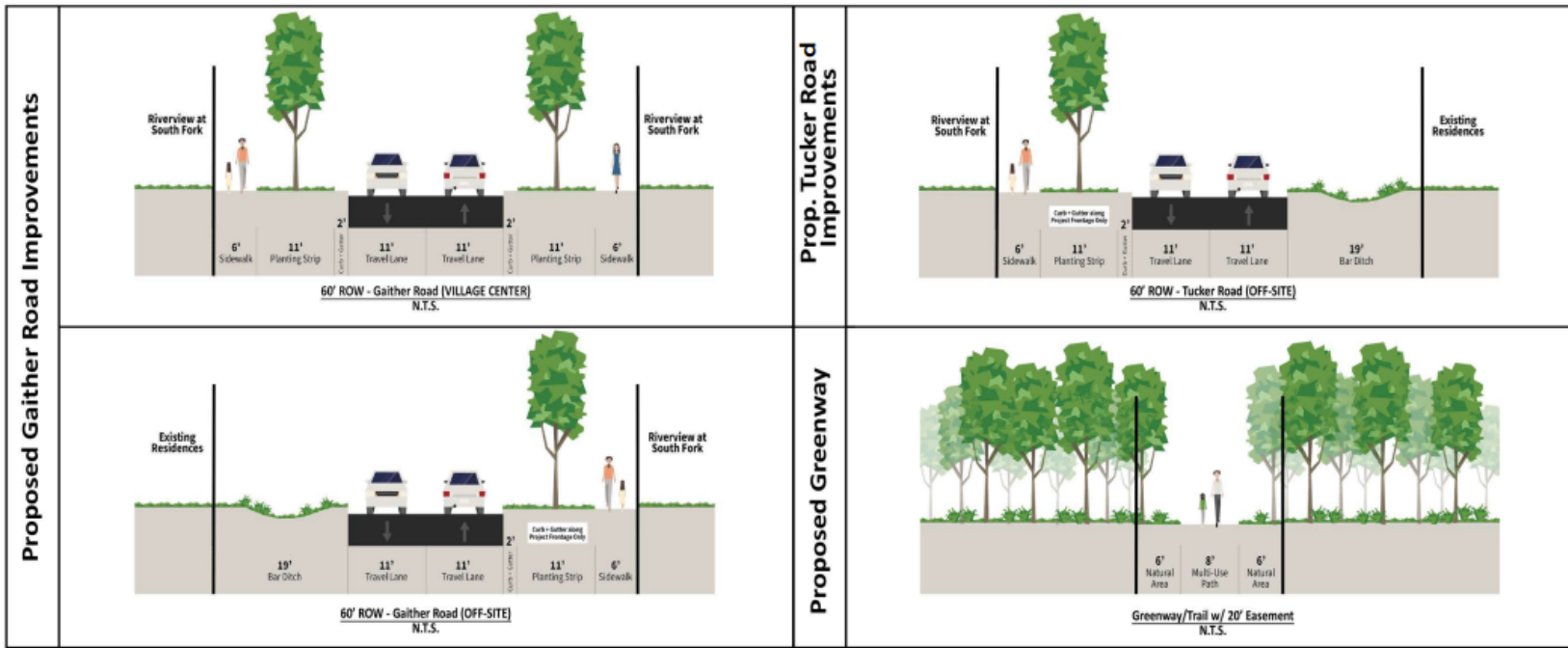


**24' Alley Section**  
N.T.S.

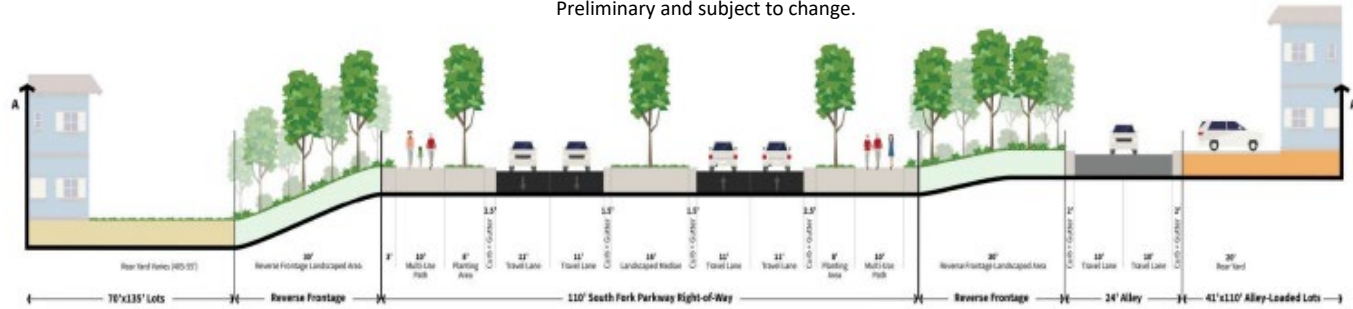
**Proposed Internal Road Sections**

N.T.S.

Preliminary and subject to change.



Preliminary and subject to change.



### South Fork Parkway Screening



### Gaither Road Screening Relationships



Preliminary and subject to change.

Shea  
HOMES



Preliminary and subject to change.

Shea  
HOMES





Preliminary and subject to change.

Shea  
HOMES



Preliminary and subject to change.





Preliminary and subject to change.





Preliminary and subject to change.





Preliminary and subject to change.

