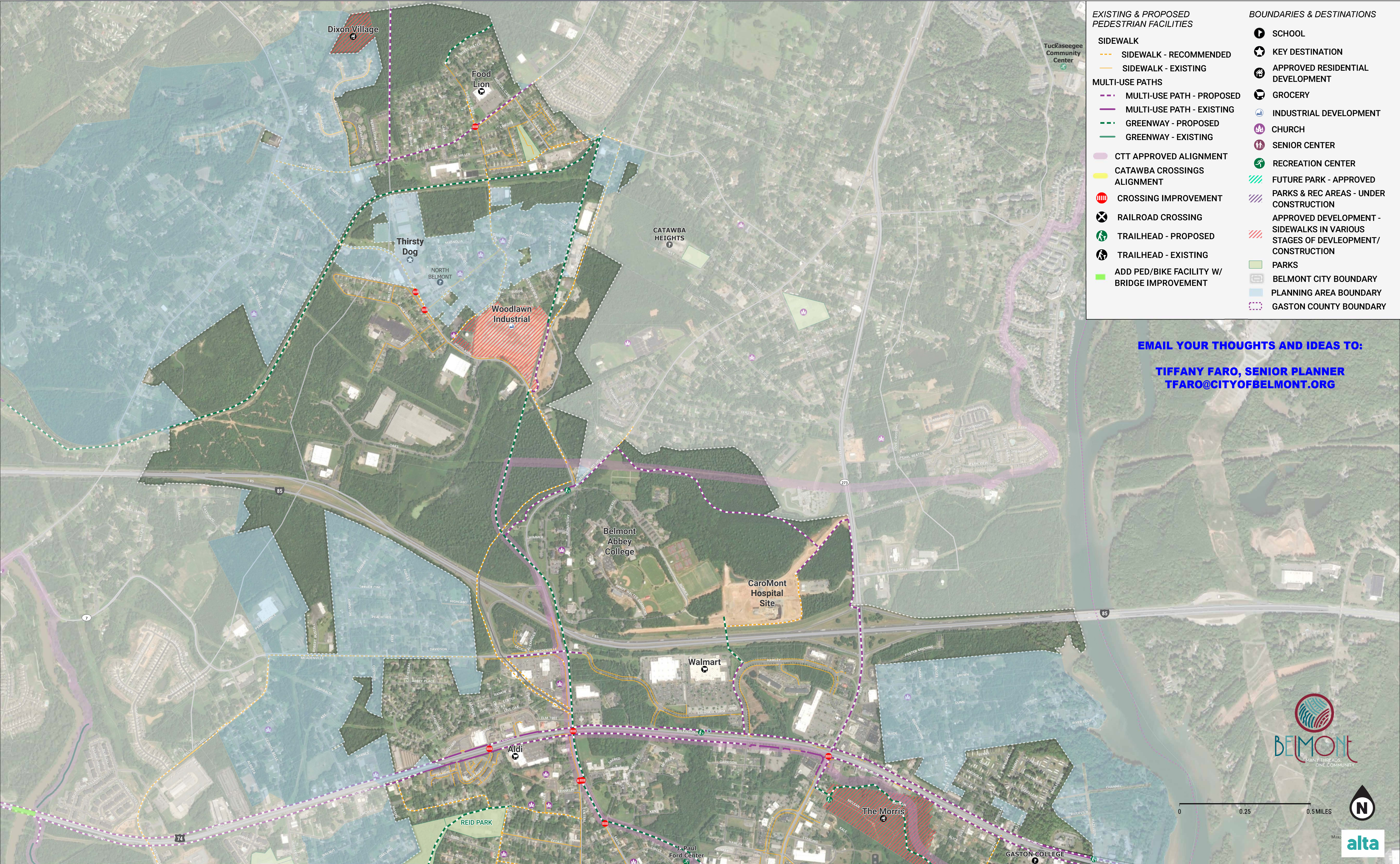


# BELMONT PEDESTRIAN PLAN

## Draft Recommendations - North Belmont



**EXISTING & PROPOSED PEDESTRIAN FACILITIES**

**SIDEWALK**

- SIDEWALK - RECOMMENDED
- SIDEWALK - EXISTING

**MULTI-USE PATHS**

- MULTI-USE PATH - PROPOSED
- MULTI-USE PATH - EXISTING
- GREENWAY - PROPOSED
- GREENWAY - EXISTING

CTT APPROVED ALIGNMENT

CATAWBA CROSSINGS ALIGNMENT

- ⊕ CROSSING IMPROVEMENT
- ⊗ RAILROAD CROSSING
- ➡ TRAILHEAD - PROPOSED
- ➡ TRAILHEAD - EXISTING
- ➡ ADD PED/BIKE FACILITY W/ BRIDGE IMPROVEMENT

**BOUNDARIES & DESTINATIONS**

- 🎓 SCHOOL
- 🏠 KEY DESTINATION
- 🏡 APPROVED RESIDENTIAL DEVELOPMENT
- 🛒 GROCERY
- 🏭 INDUSTRIAL DEVELOPMENT
- 🏛️ CHURCH
- 👴 SENIOR CENTER
- 🏃 RECREATION CENTER
- 🌳 FUTURE PARK - APPROVED
- 🏞️ PARKS & REC AREAS - UNDER CONSTRUCTION
- 🏗️ APPROVED DEVELOPMENT - SIDEWALKS IN VARIOUS STAGES OF DEVELOPMENT/ CONSTRUCTION
- 🌳 PARKS
- 🏛️ BELMONT CITY BOUNDARY
- 🌊 PLANNING AREA BOUNDARY
- 🔲 GASTON COUNTY BOUNDARY

**EMAIL YOUR THOUGHTS AND IDEAS TO:**

**TIFFANY FARO, SENIOR PLANNER**  
**TFARO@CITYOFBELMONT.ORG**

