



Whiteside Industrial Properties

Inventory and Survey

Prepared For:

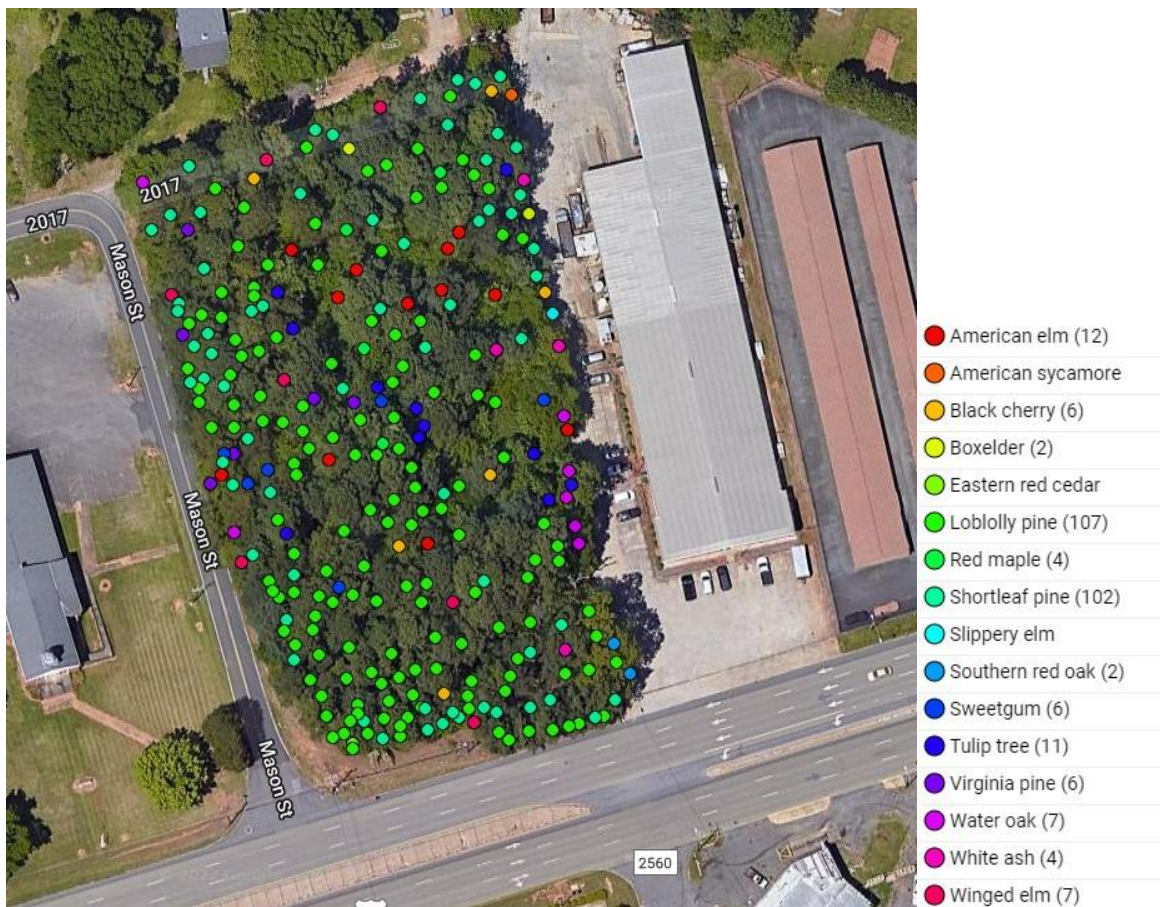
Daniel Marsha
Whiteside Industrial Properties
1921 Freedom Drive
Charlotte, NC 28208

Prepared By:

Chris Diffley
ISA Board Certified Master Arborist SO-6087B
ISA Qualified Tree Risk Assessor
North Carolina Licensed Landscape Contractor #3592
Heartwood Tree Service

Table of Contents

Table of Contents	2
Executive Summary	3
Inventory Procedures	3
Links (click to follow):	4
Qualifying Trees by DBH.....	5
Limits of Assignment	6



Executive Summary

Heartwood Tree Service performed a tree inventory at tax parcels 185780 & 185766 in Belmont, NC on July 15, 2022. Basic assessments were performed for the trees on site as required by Section 11.3.7 of the Tree Protection and Landscaping Chapter of the Belmont Land Development Code. This survey is intended as a guide for Whiteside Industrial Properties to make informed decisions for the Tree Protection Plan at the site.

The trees were surveyed in an area bordered by Wilkinson Boulevard, Mason Street, Barnes Street, and an adjacent lot of storage units. These trees were surveyed for location, species, Diameter at Breast Height (DBH), and a condition rating based on International Society of Arboriculture guidelines. All trees ten inches or greater DBH were surveyed over the entire property (*as per the requirements of the Belmont Land Development Code Section 11.3.7 "Tree Inventory"*). The trees were then categorized "protected", "significant," and "heritage" based upon these findings. A total of 279 of the trees surveyed met these requirements.

Inventory Procedures

Data Collection and Reporting

Heartwood Tree Service captured the following tree attribute data:

- Location (X and Y GPS coordinates)
- Species
- Condition (Based upon ISA "*Guide to Judging the Condition of a Shade Tree*" JOA 1978)
 - Good
 - Fair
 - Poor
 - Dead
- Diameter at Breast Height (DBH)

Heartwood then categorized the trees as "protected/significant/heritage" based on meeting the following qualifications:

- Meeting the condition requirement of "fair" or "good"
- Protected Trees ($10'' \leq X < 18''$)
- Significant Trees ($18'' \leq X < 36''$)
- Heritage Trees ($36'' \leq X$)



Links (click to follow):

The inventory map is interactive, and the trees can be filtered by species, DBH range, and condition. The table provides a detailed spreadsheet of all trees surveyed.

[Treeplotter](#)

Login (Upper right corner): Whiteside

Password: Heartwood1

Upon login, click the organization “Whiteside Industrial Properties” in the upper right-hand corner. Then click the yellow pin and “load trees” to access the inventory.

You can then filter by species or DBH in the legend on the right-hand side.

Reporting:

[Total Report](#) of all trees inventoried

[Spreadsheet](#) of all trees inventoried

Qualifying Trees by DBH



Limits of Assignment

This investigation was limited to above-ground observations of the subject trees and the surrounding site at the time of inspection. This inventory is based solely upon an Arborist site inspection, client reporting, and images obtained by Heartwood Tree Service. All the information provided regarding the history of the site and the subject trees was assumed to be true. If any information is found to be false, the conclusions in this report may be invalidated.

Our expertise in this matter is limited to arboriculture, and this report is not intended to be legal advice. We do not guarantee the safety, health, or condition of the subject trees. There is no warranty or guarantee, expressed or implied, that problems or deficiencies in the subject trees may not arise in the future.

Arborists are tree specialists who use their knowledge, education, training, and experience to examine trees, recommend measures to enhance the beauty and health of trees, and attempt to reduce the risk of living trees. Clients may choose to accept or disregard Heartwood Tree Service's recommendations, or to seek additional advice. Visual inspection is confined to the designated subject tree(s) and the inspections for this project are performed in the interest of facts of the tree(s) without prejudice to or for any other service or any interested party.