

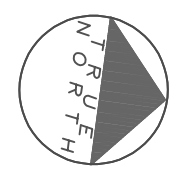
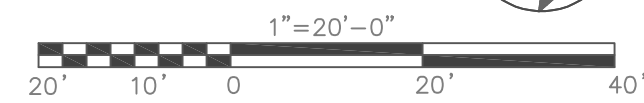


LANDSCAPE PLAN

MALLARD POINTE  
Belvedere, California

January 17, 2022

Graphic Scale



MALLARD POINTE  
1951 LLC  
Project Sponsor

THE GUZZARDO PARTNERSHIP INC.  
Landscape Architects - Land Planners  
181 Greenwich Street  
San Francisco, CA 94111  
T 415 433 4672  
F 415 433 5003

L-1.0

SECTION A  
scale 1/4" = 1'-0"



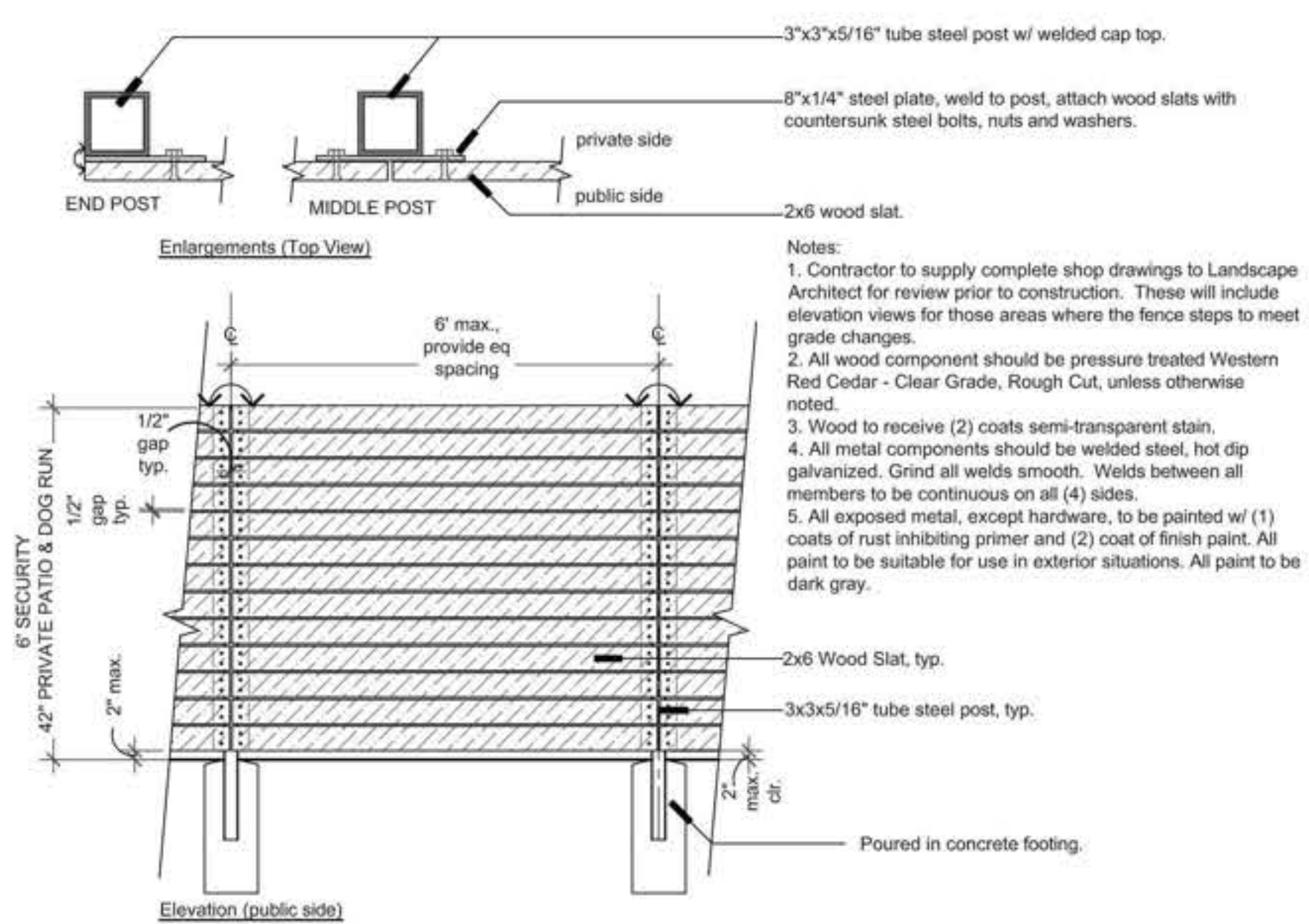
SECTION B  
scale 1/4" = 1'-0"



BOLLARD LIGHTING



PATH LIGHTING



Horizontal Wood Fence  
scale: 3/8"=1'-0"

**SHEET INDEX**

- L-1.0 Landscape Plan
- L-1.1 Landscape Sections and Material Imagery
- L-2.0 Planting Notes
- L-2.1 Planting Plan
- L-2.2 Planting Plan
- L-2.3 Planting Plan
- L-2.4 Planting Plan
- L-3.0 Plant List Imagery
- L-3.1 Plant List Imagery
- L-3.2 Plant List Imagery

LANDSCAPE SECTIONS AND MATERIAL IMAGERY

January 17, 2022



MALLARD POINTE  
Belvedere, California

MALLARD POINTE  
1951 LLC  
Project Sponsor

THE GUZZARDO PARTNERSHIP INC.  
Landscape Architects - Land Planners  
181 Greenwich Street  
San Francisco, CA 94111  
T 415 433 4672  
F 415 433 5003

L-1.1

# PLANT PALETTE

KEY	SIZE*	BOTANICAL NAME	COMMON NAME	COMMENTS	WUCOLS
ACE PAL	24" Box	Acer palmatum	Green Japanese Maple	Low-Branch	M
CUP SEM	24" Box	Cupressus x sempervirens	Italian Cypress		VL
LAG TUS	24" Box	Lagerstroemia x 'Tuscarora'	Red Flowering Crape Myrtle	Standards	M
LAG NAT	24" Box	Lagerstroemia 'Natchez'	Natchez White Flowering Crape Myrtle	Standards	M
CER OCC	24" Box	Cercis occidentalis	Western Redbud	Standards	L
MAG ALT	24" Box	Magnolia grandiflora 'Alta'	Alta™ Southern Magnolia	Standards	M
MEL NES	24" Box	Melaleuca nesophila	Pink Melaleuca		L
MEL QUI	24" Box	Melaleuca quinquenervia	Cajepul Tree	Standards	L
OLE EUR	on site	Olea europaea (potential for transplant subject to review by arborist)			L
QUE VIR	24" Box	Quercus virginiana	Southern Live Oak	Standards	L
POD MAK	24" Box	Podocarpus macrophyllus 'Maki'	Shrubby Yew Podocarpus	Column	L
ULM SEM	24" Box	Ulmus sempervirens 'Drake'	Evergreen Elm	Standards	M
TRI LAU	36" Box	Tristania laurina 'Elegant'	Water Gum	Standards	L

KEY	SIZE	BOTANICAL NAME	COMMON NAME	SPACING**	WUCOLS
AAV	15 Gal	Agave americana 'Variegata' *	Variegated Agave	24" O.C.	VL
AUN	5 Gal	Arbutus unedo 'Compacta'	Strawberry Tree	36" O.C.	L
AHM	5 Gal	Arctostaphylos 'Howard McMinn'	Manzanita	48" O.C.	L
ASM	5 Gal	Asparagus densiflorus 'Myers'	Myers Foxtail Fern Asparagus	36" O.C.	M
CCO	5 Gal	Ceanothus 'Concha' *	Wild Lilac	72" O.C.	L
CSK	5 Gal	Ceanothus 'Skylark' *	Skylark California Lilac	42" O.C.	L
CMI	5 Gal	Citrus limon 'Meyer Improved'	Improved Meyer Lemon	42" O.C.	L
CPU	5 Gal	Cistus purpureus *	Orchid Rockrose	36" O.C.	L
CSA	5 Gal	Cistus salvifolius *	Sageleaf Rockrose	30" O.C.	L
CSG	5 Gal	Coleonema p. 'Sunset Gold'	Golden Breath of Heaven	36" O.C.	M
CMI	5 Gal	Cotoneaster microphyllus	Rockspray Cotoneaster	60" O.C.	L
DVE	5 Gal	Dietes vegeta	Fortnight Lily	30" O.C.	L
END	5 Gal	Escallonia 'Newport Dwarf'	Escallonia	36" O.C.	M
HHY	1 Gal	Hemerocallis hybrids	Evergreen Daylily	24" O.C.	M
HAR	5 Gal	Heteromeles arbutifolia 'Davis Gold'	Davis Gold Toyon	72" O.C.	L
HRC	5 Gal	Hibiscus rosa-sinensis 'Cherie'	Cherie Hibiscus	72" O.C.	M
HMR	5 Gal	Hibiscus moscheutos 'RutHib2'	Head Over Heels® Passion Hibiscus	72" O.C.	M
LCH	5 Gal	Loropetalum chinense 'Sizzling Pink'	Sizzling Pink Fringe Flower	36" O.C.	L
LCA	1 Gal	Limonium californicum	Sea Lavender	24" O.C.	L
LJT	5 Gal	Ligustrum japonicum 'Texanum'	Texas Waxleaf Privet	42" O.C.	M
MCA	5 Gal	Myrica californica	Pacific Wax Myrtle	60" O.C.	M
PHX	5 Gal	Philodendron xanadu	Xanadu Philodendron	36" O.C.	M
PRO	15 Gal	Phoenix roebelenii	Pygmy Date Palm	Not App.	M
PCR	5 Gal	Pittosporum crassifolium 'Nana'	Pittosporum	36" O.C.	M
PTE	5 Gal	Pittosporum tenuifolium 'Marjorie Channon'	Marjorie Channon Pittosporum	48" O.C.	M
PTO	5 Gal	Pittosporum tobira 'Wheeler's Dwarf'	Wheeler's Dwarf Japanese Pittosporum	36" O.C.	M
PIL	5 Gal	Prunus ilicifolia	Hollyleaf Cherry	60" O.C.	L
RCL	5 Gal	Rhaphiolepis l. 'Clara'	India Hawthorn	30" O.C.	L
RMS	5 Gal	Rhamnus c. 'Mound San Bruno'	Mound San Bruno Coffeeberry	42" O.C.	L
RVI	5 Gal	Ribes viburnifolium	Catalina Perfume	60" O.C.	L
RCA	5 Gal	Rosa californica	California Rose	48" O.C.	L
RRU	5 Gal	Rosa rugosa 'Alba'	Ramanas Rose	42" O.C.	L
SWG	5 Gal	Salvia c. 'Winifred Gilman' *	Cleveland Sage	30" O.C.	L
TFR	5 Gal	Teucrium fruticosum	Germander	42" O.C.	L
WFR	5 Gal	Westringia fruticosa	Coast Rosemary	48" O.C.	L
YBE	5 Gal	Yucca filamentosa 'Bright Edge'	Bright Edge Yucca	48" O.C.	L

\*\*If used as or noted on plans as shrub mass/groundcover

## PLANT SPACING DIAGRAM

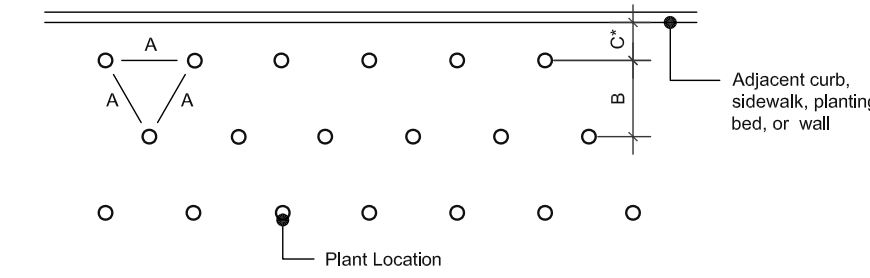
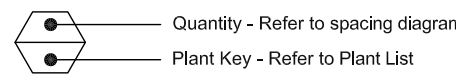


Diagram for use when plants are spaced equidistant from each other, including all groundcover plantings and massed shrub plantings.

## PLANT CALLOUT SYMBOL



## PLANT QUANTITY DIAGRAM

SPACING 'A'	SPACING 'B'	SPACING 'C'	PLANTS PER SQUARE FOOT
6" O.C.	5.20"	2.80"	4.80
8" O.C.	6.93"	3.47"	2.60
9" O.C.	7.79"	3.90"	1.78
10" O.C.	8.66"	4.33"	1.66
12" O.C.	10.40"	5.20"	1.15
15" O.C.	13.00"	6.50"	0.74
18" O.C.	15.60"	7.80"	0.51
24" O.C.	20.80"	10.40"	0.29
30" O.C.	26.00"	13.00"	0.18
36" O.C.	33.00"	15.00"	0.12
48" O.C.	40.00"	20.00"	0.07
72" O.C.	62.35"	31.18"	0.04

See Plant Spacing Diagram for maximum triangular spacing 'A'. This chart is to be used to determine number of ground cover required in a given area and spacing between shrub massings. Where shrub massings are shown, calculate shrub mass areas before utilizing spacing chart to determine plant quantities.

\*Where curb, sidewalk, adjacent planting bed or wall condition occurs, utilize spacing 'C' to determine plant distance from wall, sidewalk, adjacent planting bed or back of curb, where C = B/2.

KEY	SIZE	BOTANICAL NAME	COMMON NAME	COMMENTS	WUCOLS
CD	1 Gal	Carex divulsa	Berkeley Sedge	24" O.C.	L
CA	1 Gal	Calamagrostis acutiflora 'Stricta'	Feather Reed Grass	36" O.C.	M
DC	1 Gal	Deschampsia c. holciformis	Pacific Hair Grass	24" O.C.	L
FC	1 Gal	Festuca californica	California Fescue	24" O.C.	L
HS	1 Gal	Helictotrichon sempervirens *	Blue Oat Grass	24" O.C.	L
KU	5 Gal	Kniphofia uvaria 'Flamenco'	Red Poker Plant	24" O.C.	L
LT	5 Gal	Lomandra 'Lime Tuff'	Dwarf Mat Rush	24" O.C.	L
MR	1 Gal	Muhlenbergia rigens	Deer Grass	36" O.C.	L
MU	1 Gal	Muhlenbergia 'Regal Mist'	Regal Mist Pink Muhly Grass	30" O.C.	L
SA	1 Gal	Systyrinchium angustifolium	Blue Eyed Grass	24" O.C.	M

KEY	SIZE	BOTANICAL NAME	COMMON NAME	COMMENTS	WUCOLS
AT	1 Gal	Aeonium arborescens 'Tip Top'	Tip Top Aeonium	36" O.C.	L
AE	5 Gal	Arctostaphylos 'Emerald Carpet'	Bearberry	36" O.C.	M
AM	1 Gal	Asteriscus maritimus 'Compacta'	Compacta Beach Daisy	18" O.C.	M
CG	1 Gal	Ceanothus gloriosus 'Emily Brown'	Point Reyes Ceanothus	36" O.C.	L
CT	1 Gal	Cerastium tomentosum	Snow-In-Summer	24" O.C.	M
EF	1 Gal	Eouonymus fortunei coloratus	Winter Creeper	24" O.C.	L
EG	1 Gal	Erigeron glaucus	Beach Aster	18" O.C.	L
FC	flats	Fragaria chiloensis	Beach Strawberry	18" O.C.	M
ID	1 Gal	Iris douglasiana 'P. Coast Hybrids'	Iris Pacific Coast Hybrid	18" O.C.	L
MP	1 Gal	Myoporum 'Pacificum'	Myoporum	48" O.C.	L
LL	1 Gal	Lantana x 'Monet'	Spreading Sunset™ Lantana	48" O.C.	M
LS	1 Gal	Lantana sellowiana	Trailing Lantana	48" O.C.	M
LH	2 Gal	Lavandula angustifolia 'Hidcote Blue'	Hidcote Blue English Lavender	48" O.C.	L
TC	1 Gal	Thymus praecox 'Coccineus'	Red Creeping Thyme	24" O.C.	L

KEY	SIZE	BOTANICAL NAME	COMMON NAME	COMMENTS	WUCOLS
BO	5 Gal	Bougainvillea 'California Gold'	Bougainvillea 'California Gold'		L
BK	5 Gal	Bougainvillea 'Barbara Karst'	Bougainvillea 'Barbara Karst'		L
TJ	1 Gal	Trachelospermum jasminoides	Star Jasmine		M

KEY	SIZE	BOTANICAL NAME	COMMON NAME	COMMENTS	WUCOLS
Sod	Lawn		See Planting Notes #10		

Zone or Valve	Hydrozone*	Irrigation Method**	Gallons Per Minute	Area (SQ.FT.)
1	HW	D	6	483
2	LW	D	10	910
3	LW	D	9	765
4	LW	D	5	441
5	LW	D	10	836
6	LW	D	9	767
7	LW	D	2	206
8	MW	D	5	400
9	LW	D	2	186
10	LW	D	5	452
11	MW	D	4	305
12	LW	D	7	620
13	LW	D	10	900
14	LW	D	13	1,121
15	LW	D	15	1,347
16	LW	D	2	198
17	LW	D	13	1,107
18	MW	D	14	1,226
19	LW	D	2	190
20	LW	D	4	389
21	LW	D	5	446
22	LW	D	2	140
23	LW	D	15	1,292
24	MW	D	11	984
25	LW	D	0	37
26	LW	D	2	146
27	LW	D	18	1,528
28	LW	D	9	818
29	LW	D	7	641
30	LW	D	6	491
TREES	LW	B	31	1,525
TREES	MW	B	29	1,450
BOXES	MW	B	8	82
POTS	MW	B	21	182
TOTAL				22,611

HYDROZONE	AREA (SQ.FT.)
HIGH WATER USE PLANTS	483
MODERATE WATER USE	4,629
LOW WATER USE	17,499
TOTAL	22,611

\*HW=High water use plants; MW=Moderate water use plants; LW=Low water use plants  
 \*\*MS=Microspray; S=Spray; R=Rotor; B=Bubbler; D=Drip; O=Other

# PLANTING NOTES

- All work shall be performed by persons familiar with planting work and under supervisions of a qualified planting foreman.
- Plant material locations shown are diagrammatic and may be subject to change in the field by the Landscape Architect before the maintenance period begins.
- All trees are to be staked as shown in the staking diagrams.
- All tree stakes shall be cut 6" above tree ties after stakes have been installed to the depth indicated in the staking diagrams. Single stake all conifers per tree staking diagram.
- Plant locations are to be adjusted in the field as necessary to screen utilities but not to block windows nor impede access. The Landscape Architect reserves the right to make minor adjustments in tree locations after planting at no cost to the Owner. All planting located adjacent to signs shall be field adjusted so as not to interfere with visibility of the signs.
- The Landscape Architect reserves the right to make substitutions, additions, and deletions in the planting scheme as felt necessary while work is in progress. Such changes are to be accompanied by equitable adjustments in the contract price if/when necessary and subject to the Owner's approval.
- The contractor is to secure all vines to walls and columns with approved fasteners, allowing for two (2) years growth. Submit sample of fastener to Landscape Architect for review prior to ordering.
- All planting areas, including planter pots, except lawns, shall be top-dressed with a 3" layer of recycled wood mulch, "Muir Woods Brown Mulch" by WM Earthcare (877.963.2784; wmeearthcare.com) or approved equal. Submit sample to Landscape Architect for review prior to ordering. Hold all mulch six (6) inches from all plants where mulch is applied over the rootball.
- All street trees to be installed in accordance with the standards and specifications of the City of Belvedere. Contractor to contact the city arborist to confirm plant type, plant size (at installation), installation detailing and locations prior to proceeding with installation of street trees. Contractor is to obtain street tree planting permit from the city, if a permit is required, prior to installation of street trees. Contractor is to consult with the Landscape Architect during this process.
- The lawn shall be sod or seeded (as noted) and consist of a drought tolerant hard fescue blend such as Pacific Sod "Medallion Dwarf with Bonsai", installed per manufacturer's recommendations and specifications. The mix shall consist of the following proportions of grass species: 100% Bonsai Double Dwarf fescue. Available through: Pacific Sod (800) 942-5296
- Trees planted in lawn areas shall have a 12" diameter cutout for trimming purposes.
- Plants shall be installed to anticipate settlement. See Tree and Shrub Planting Details.
- All trees noted with 'deep root' and those planted within 5'-0" of concrete paving, curbs, and walls shall have deep root barriers installed per manufacturer's specifications. See specifications and details for materials, depth of material, and location of installation.
- The Landscape Contractor shall arrange with a nursery to secure plant material noted on the drawings and have those plants available for review by the Owner and Landscape Architect within thirty (30) days of award of contract. The Contractor shall purchase the material and have it segregated and grown for the job upon approval of the plant material. The deposit necessary for such contract growing is to be born by the Contractor.
- The project has been designed to make efficient use of water through the use of drought tolerant plant materials. Deep rooting shall be encouraged by deep watering plant material as a part of normal landscape maintenance. The irrigation for all planting shall be limited to the amount required to maintain adequate plant health and growth. Water usage should be decreased as plants mature and become established. The irrigation controllers shall be adjusted as necessary to reflect changes in weather and plant requirements.
- The Landscape Contractor shall verify the location of underground utilities and bring any conflicts with plant material locations to the attention of the Landscape Architect for a decision before proceeding with the work. Any utilities shown on the Landscape drawings are for reference and coordination purposes only. See Civil Drawings.
- The design intent of the planting plan is to establish an immediate and attractive mature landscape appearance. Future plant growth will necessitate trimming, shaping and, in some cases, removal of trees and shrubs as an on-going maintenance procedure.
- Install all plants per plan locations and per patterns shown on the plans. Install all shrubs to ensure that anticipated, maintained plant size is at least 2'-0" from the face of building(s) unless shown otherwise on the plans. Refer to Plant Spacing Diagram for plant masses indicated in a diagrammatic manner on the plans. Refer to Plant Spacing Diagram for spacing of formal hedge rows.
- Contractor to provide one (1) Reference Planting Area for review by Landscape Architect prior to installation of the project planting. The Reference Planting Area shall consist of a representative portion of the site of not less than 900 (nine hundred) square feet. Contractor to set out plants, in containers, in the locations and patterns shown on the plans, for field review by the Landscape Architect. The Reference Planting Area will be used as a guide for the remaining plant installation.
- The Maintenance Period(s) shall be for 60 (sixty) days. Portions of the installed landscape of a project may be placed on a maintenance period prior to the completion of the project at the Owner's request and with the Owner's concurrence.
- Contractor to verify drainage of all tree planting pits. See Planting Specifications. Install drainage well per specifications and Tree Planting Detail(s) if the tree planting pit does not drain at a rate to meet the specifications.
- Contractor shall remove all plant and bar code labels from all installed plants and landscape materials prior to arranging a site visit by the Landscape Architect.
- All tree rootballs shall be irrigated by water jet during the sixty (60) day maintenance period established by specifications. This irrigation shall occur each time normal irrigation is scheduled.
- The Landscape Contractor shall, as a part of this bid, provide for a planting allowance for the amount of \$5,000,000 (Five Thousand Dollars) to be used for supplying and installing additional plant material as directed by the Landscape Architect and approved by the Owner in writing. The unused portion of the allowance shall be returned to the Owner at the beginning of the maintenance period.
- The contractor is required to submit plant quantities and unit prices for all plant materials as a part of the bid.
- Assume 15 gallon plant for any un-labelled or un-sized tree; 5 gallon plant for any un-labelled or un-sized shrub; and 1 gallon @ 18" o.c. for any un-labelled ground cover.
- Assume 5 gallon plant size at 36" o.c. for all planting beds not provided with planting callouts or planting information.
- The planting areas on grade shall be ripped to a depth of 8" to reduce compaction. The native subgrade soil shall be treated with 100 lbs of gypsum/1000 sf and leached to improve drainage and reduce the soil interface barrier. Contractor shall coordinate this work with other trades. This is subject to the final recommendations of the soils test (see below) and review by the Landscape Architect and the Owner.
- All planting areas on grade are to receive Vision Comp OMRI Listed Compost by Vision Recycling, (510) 429-1300, or approved equal, at the rate of 6 cubic yards/1000 square feet, evenly tilled 6" deep into the soil to finish grade. All planting areas shall have 6-20-20 Commercial Fertilizer at 25lbs/1000 square feet evenly distributed into the soil. This is subject to the final recommendations and review of the soils test (see below) by the Landscape Architect and the Owner.
- Planting pits are to be backfilled with a mixture of 50% native soil and 50% amended native soil per note # 26 above.
- The General Contractor is to provide an agricultural suitability analysis for representative samples of on-site rough graded soil and any imported topsoil. Recommendations for amendments contained in this analysis are to be carried out before planting occurs. Such changes are to be accompanied by equitable adjustments in the contract price if/when necessary. See specifications for testing procedure.
- See civil drawings for imported storm water treatment area soil.

**Maximum Applied Water Allowance**

Enter Zip Code  26.33 Residential?  No

**Enter Project Information**

Project Name: MALLARD POINTE  
 Address: BELVEDERE  
 Meter Number: NEW  
 Location/Sheet No. N/A  
 Date: 10/14/2021

---

**Maximum Applied Water Allowance (MAWA)**

Landscape Area:  sqft

Special Landscape Area:  sqft

MAWA =  CCF

---

**Estimated Total Water Use (ETWU)**

Low water use plant  sqft

Moderate water use plant  sqft

High water use plant  sqft

Efficiency Factor

% of Total Landscape Irrigated with Drip	Irrigation Efficiency Factor
0-33%	select 0.75
34-66%	select 0.80
67-100%	select 0.85

ETWU =  CCF

---

Water Use Table						
ETWU	Gallons:	163,812	CCF's:	219	AF:	0.50
Baseline Period	Jan/Feb	Mar/Apr	May/June	July/Aug	Sep/Oct	Nov/Dec
Baseline CCF's	1	24	60	70	51	13

1 CCF = 748 Gallons; 1 AF = 435.6 CCF's

For more information please contact 415-945-1497 or see our website at www.marinwater.org

## PLANTING NOTES



January 17, 2022

# MALLARD POINTE

Belvedere, California

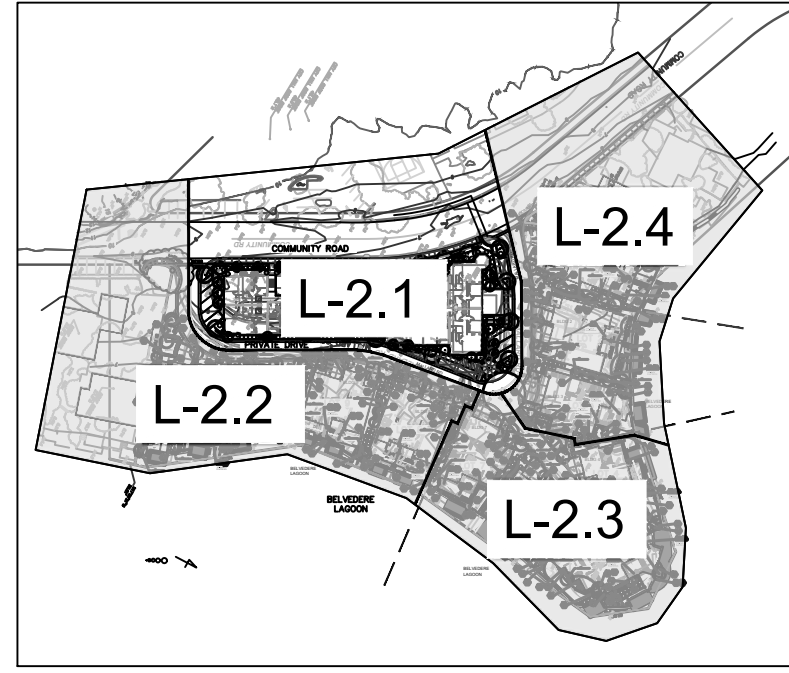
**MALLARD POINTE**  
 1951 LLC  
 Project Sponsor

THE GUZZARDO PARTNERSHIP INC.  
 Landscape Architects - Land Planners

181 Greenwich Street  
 San Francisco, CA 94111  
 T 415 433 4672  
 F 415 433 5003

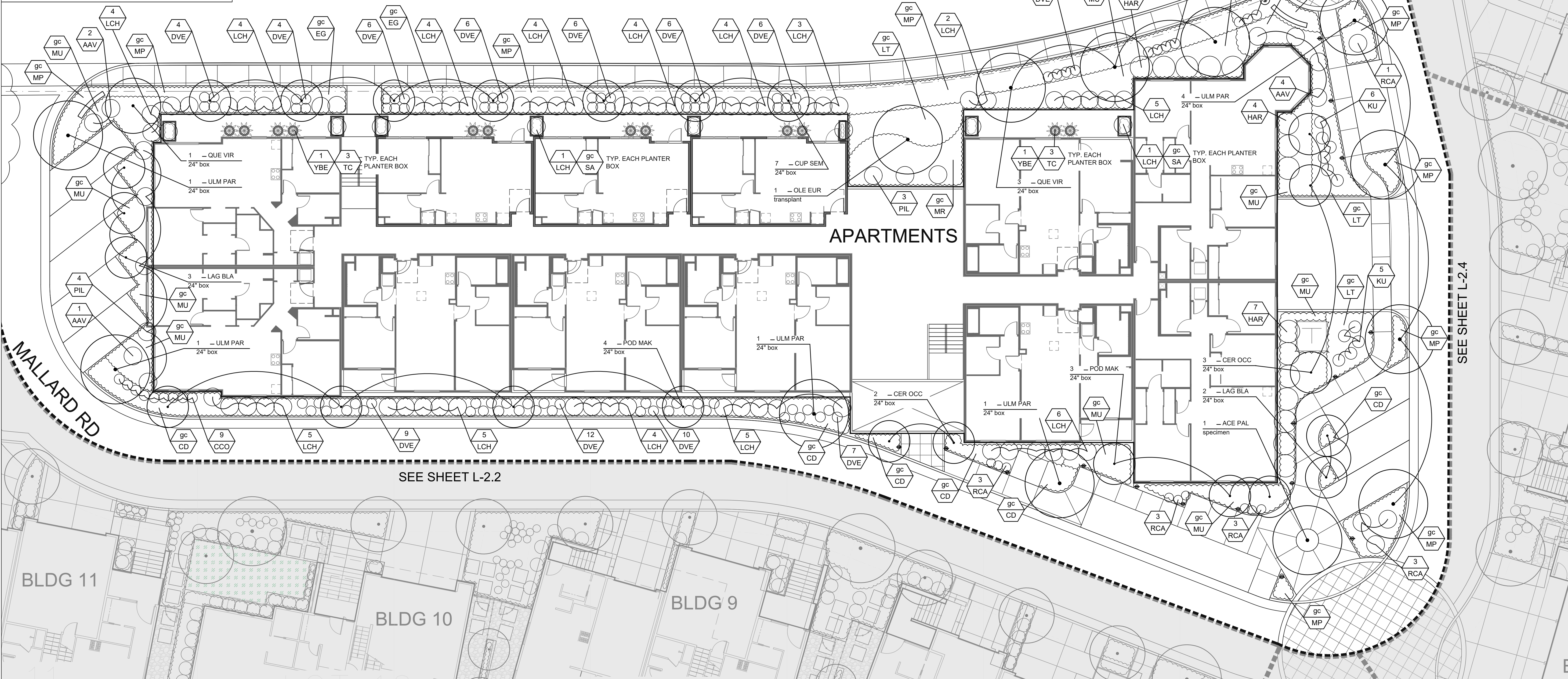
# L-2.0

KEY MAP



NOTE:  
See sheet L-2.0 for planting palette.

COMMUNITY RD

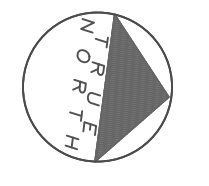
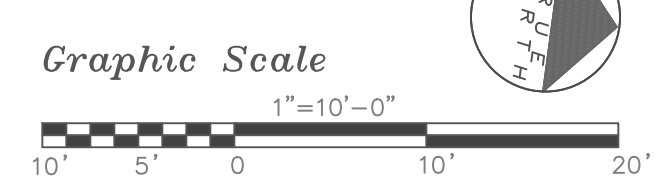


SEE SHEET L-2.4

SEE SHEET L-2.2

PLANTING PLAN

January 17, 2022



# MALLARD POINTE

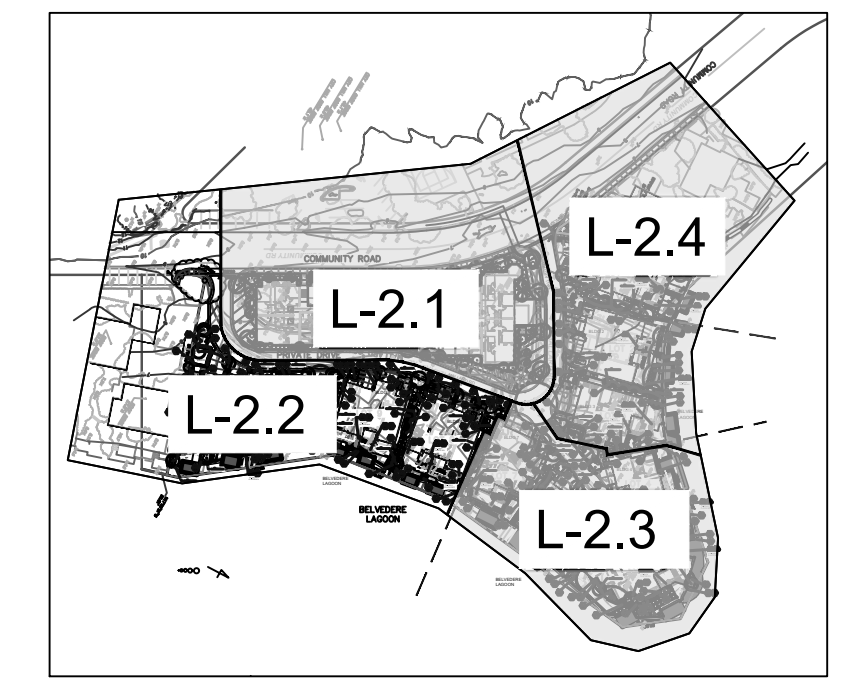
Belvedere, California

MALLARD POINTE  
1951 LLC  
Project Sponsor

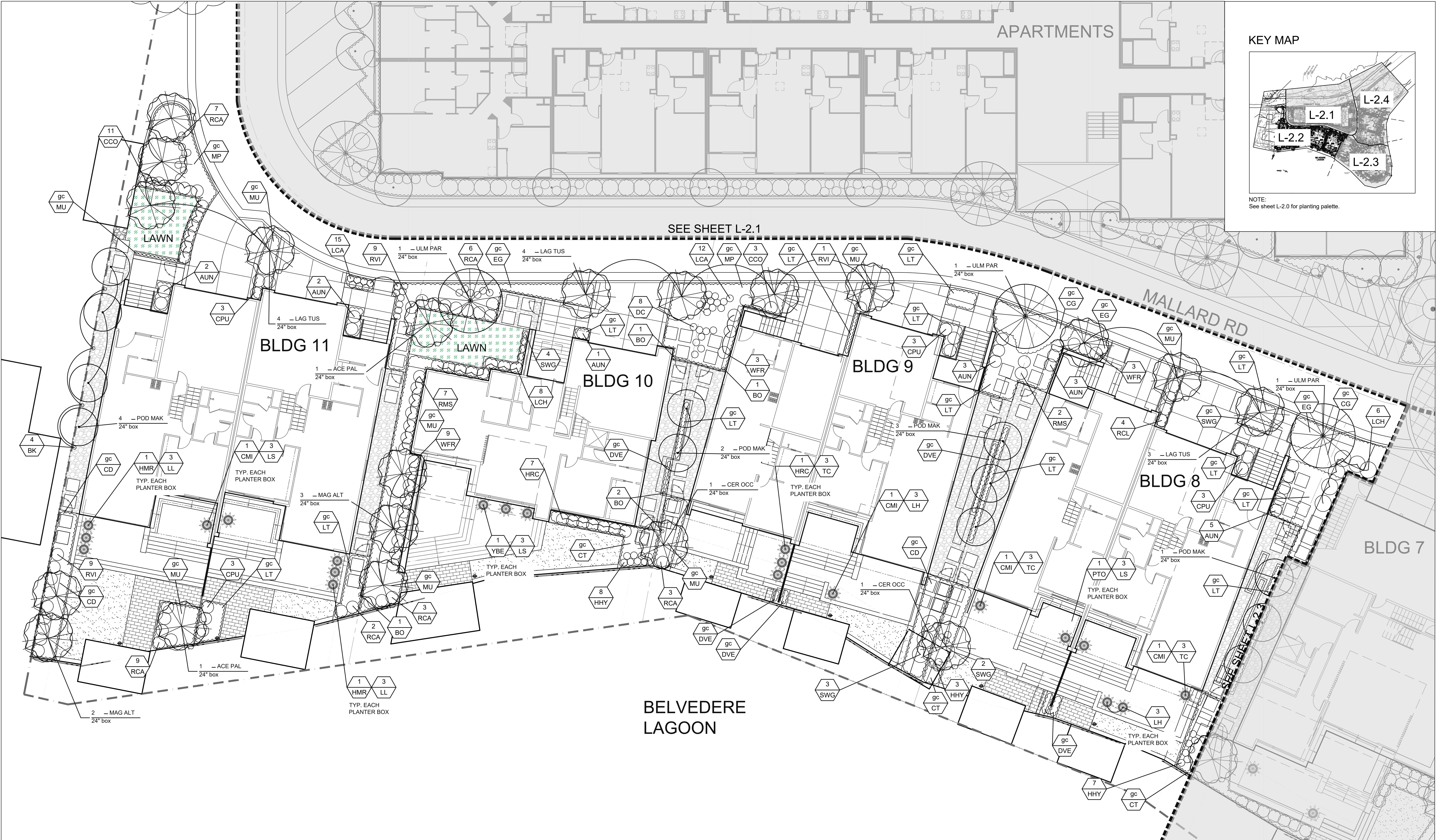
THE GUZZARDO PARTNERSHIP INC.  
Landscape Architects • Land Planners  
181 Greenwich Street  
San Francisco, CA 94111  
T 415 433 4672  
F 415 433 5003

# L-2.1

KEY MAP

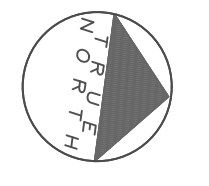
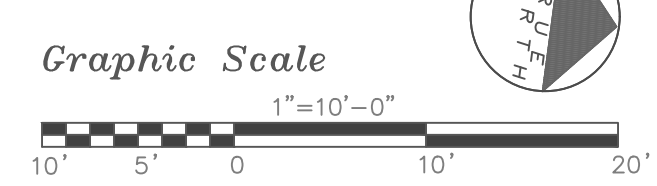


NOTE:  
See sheet L-2.0 for planting palette.



PLANTING PLAN

January 17, 2022



# MALLARD POINTE

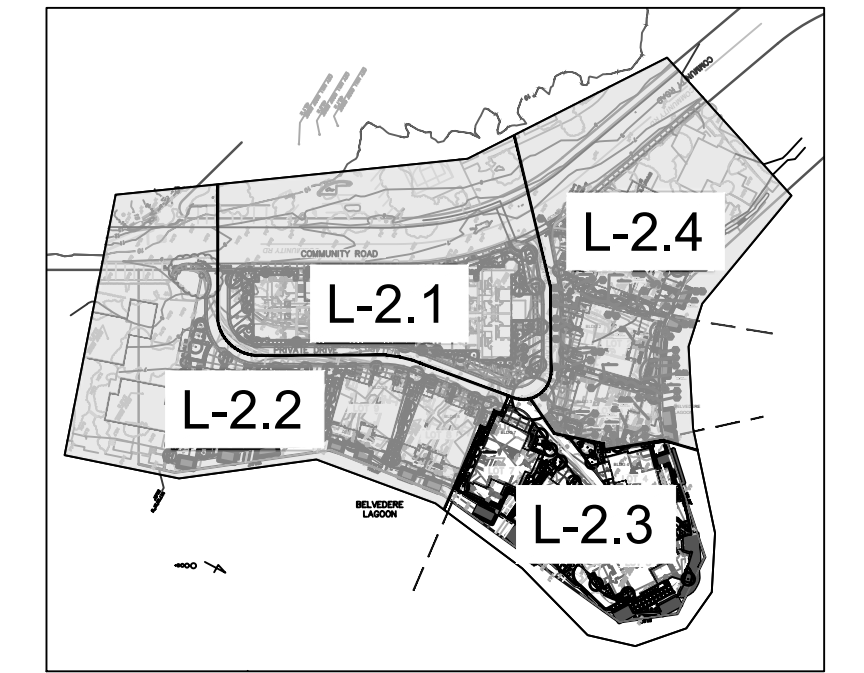
Belvedere, California

**MALLARD POINTE**  
1951 LLC  
Project Sponsor

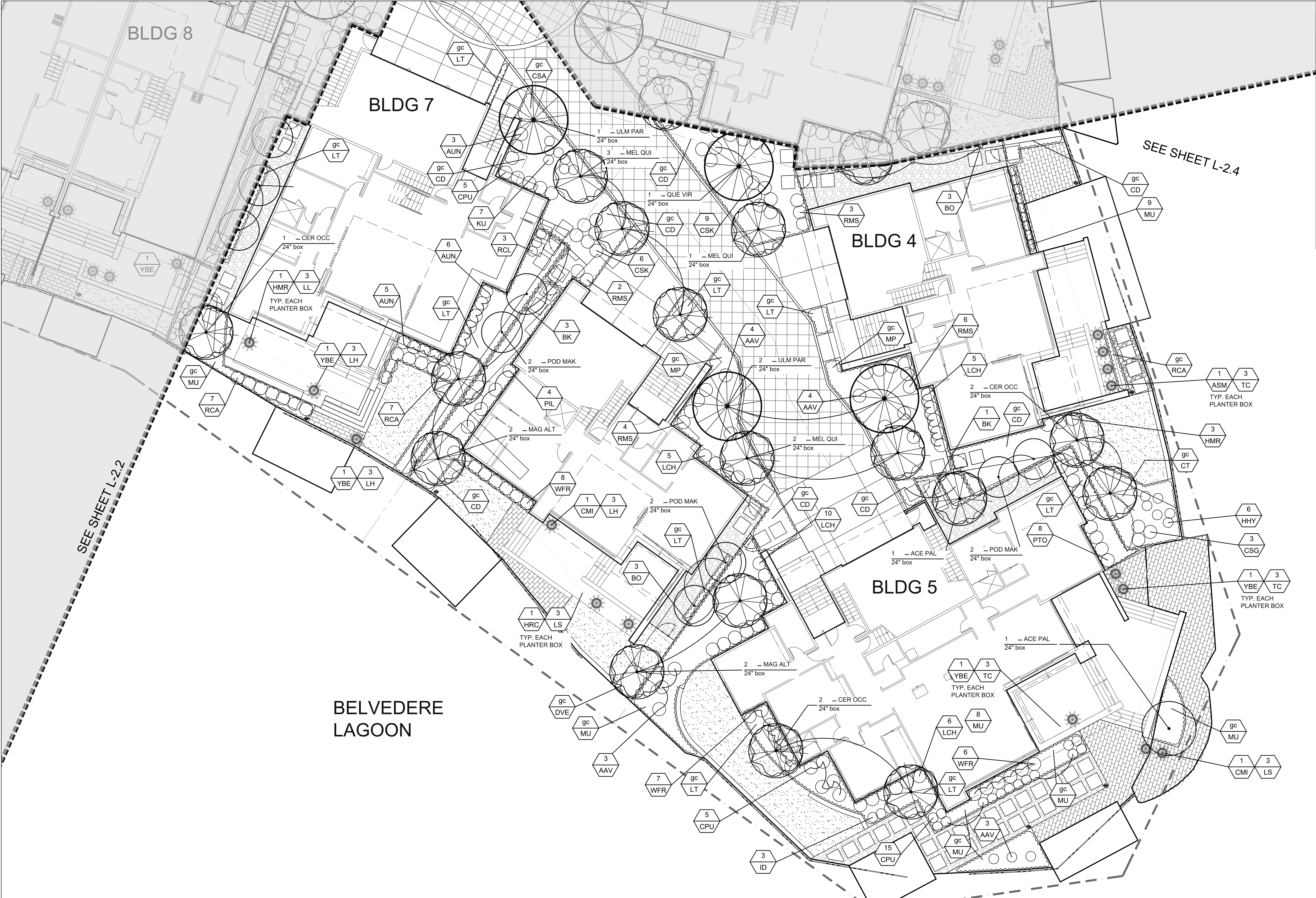
**THE GUZZARDO PARTNERSHIP INC.**  
Landscape Architects • Land Planners  
181 Greenwich Street  
San Francisco, CA 94111  
T 415 433 4672  
F 415 433 5003

## L-2.2

KEY MAP

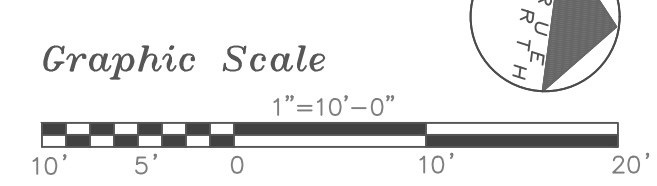


NOTE:  
See sheet L-2.0 for planting palette.



PLANTING PLAN

January 17, 2022



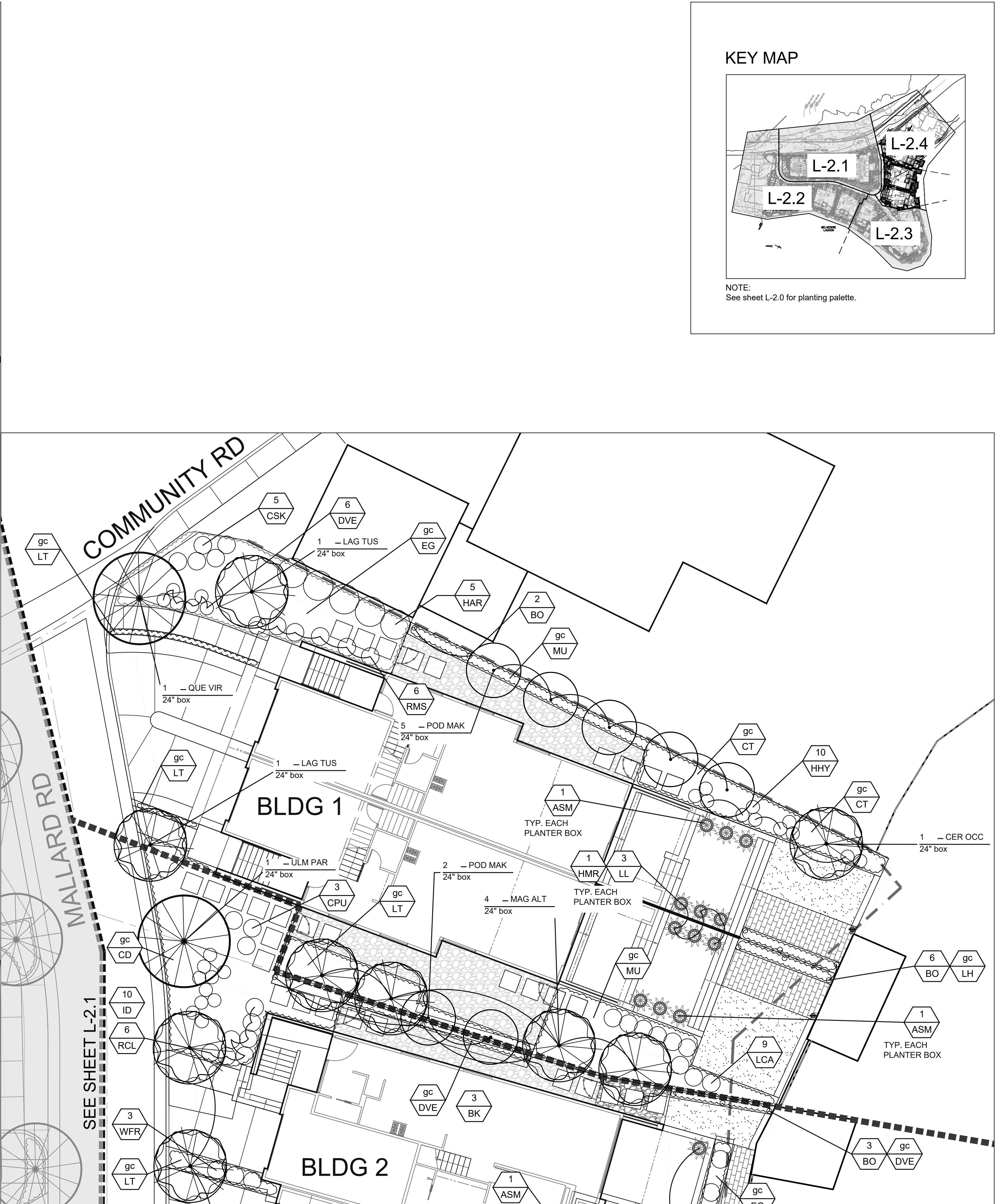
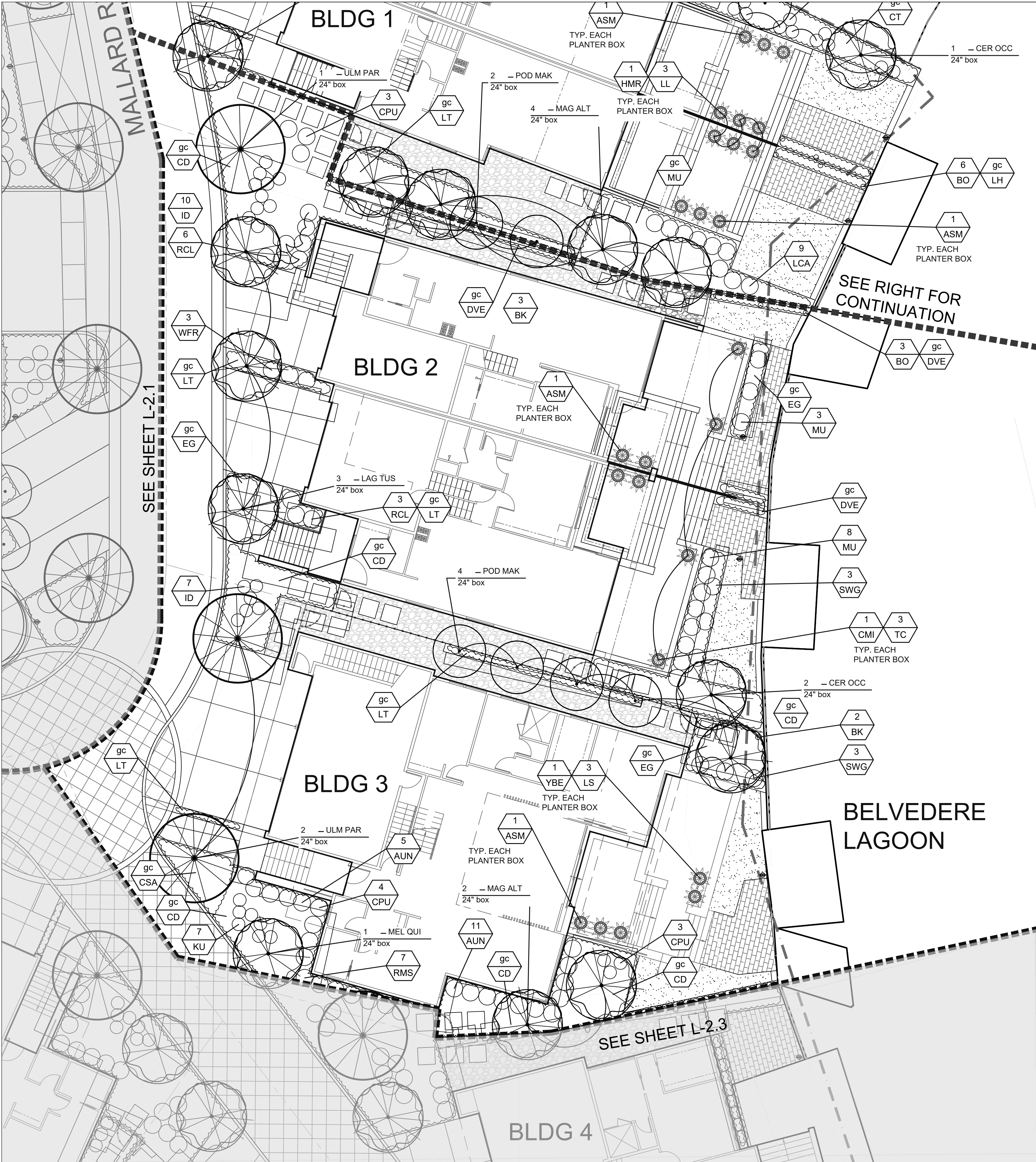
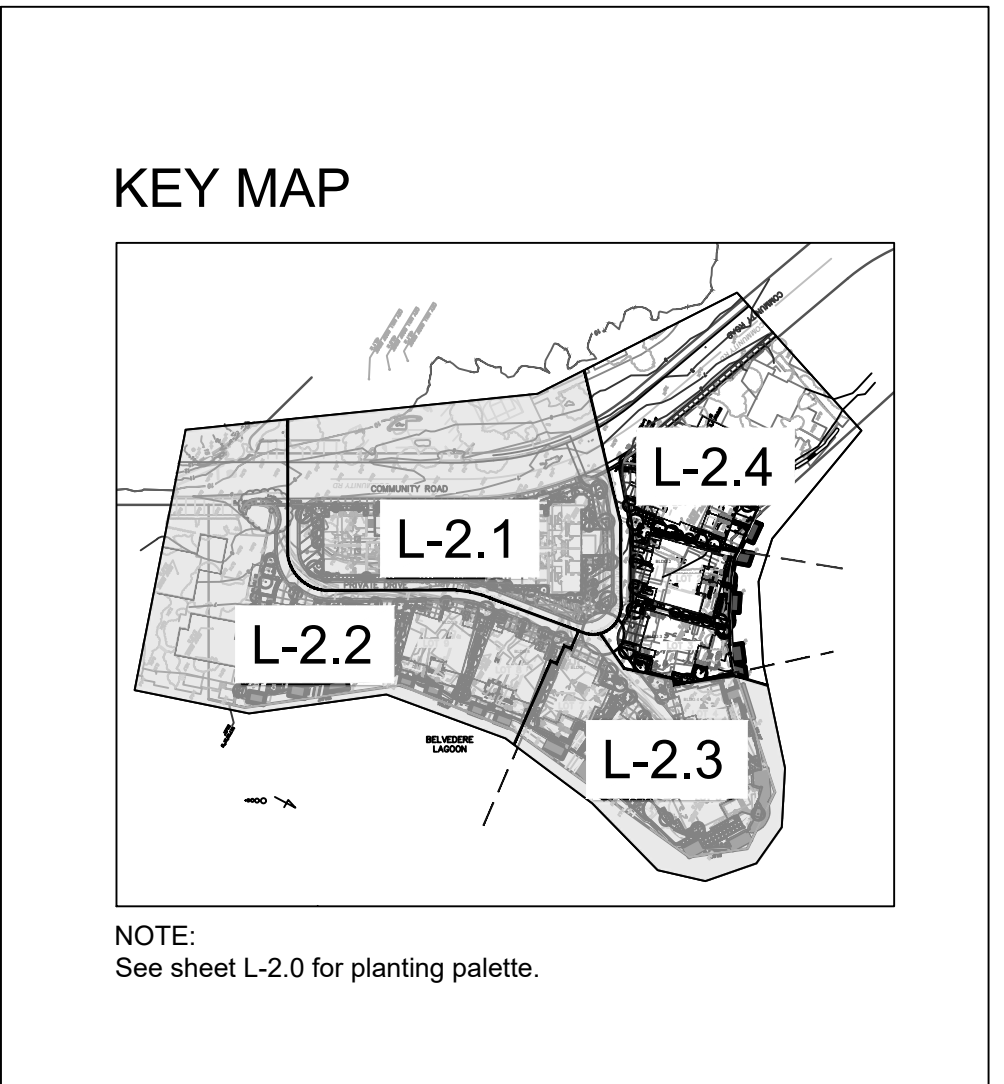
# MALLARD POINTE

Belvedere, California

**MALLARD POINTE**  
1951 LLC  
Project Sponsor

**THE GUZZARDO PARTNERSHIP INC.**  
Landscape Architects • Land Planners  
181 Greenwich Street  
San Francisco, CA 94111  
T 415 433 4672  
F 415 433 5003

# L-2.3



PLANTING PLAN

January 17, 2022  
 Graphic Scale  
 1"=10'-0"



MALLARD POINTE  
*Belvedere, California*

MALLARD POINTE  
 1951 LLC  
 Project Sponsor

THE GUZZARDO PARTNERSHIP INC.  
 Landscape Architects • Land Planners  
 181 Greenwich Street  
 San Francisco, CA 94111  
 T 415 433 4672  
 F 415 433 5003

L-2.4

TREES



Acer palmatum



Cupressus x sempervirens



Lagerstroemia x 'Tuscarora'



Lagerstroemia 'Natchez'



Cercis occidentalis



Magnolia grandiflora 'Alta'



Melaleuca nesophila



Melaleuca quinquenervia



Olea europaea



Quercus virginiana



Podocarpus macrophyllus 'Maki'



Ulmus sempervirens 'Drake'



Tristania laurina 'Elegant'

SHRUBS



Aloe striata



Arbutus unedo 'Compacta'



Arcrostaphylos 'Howard McMinn'



Asparagus densiflorus 'Meyers'



Ceanothus spp.



Cistus spp.



Coleonema p. 'Sunset Gold'



Cotoneaster microphyllus



Diets vegeta



Escallonia 'Newport Dwarf'



Hemerocallis hybrids



Heteromeles arbutifolia



Hibiscus spp.



Loropetalum chinense



Limonium californicum



Ligustrum japonicum 'Texanum'

PLANT LIST IMAGERY

January 17, 2022



MALLARD POINTE  
Belvedere, California

MALLARD POINTE  
1951 LLC  
Project Sponsor

THE GUZZARDO PARTNERSHIP INC.  
Landscape Architects - Land Planners  
181 Greenwich Street  
San Francisco, CA 94111  
T 415 433 4672  
F 415 433 5003

L-3.0



SHRUBS CONTINUED



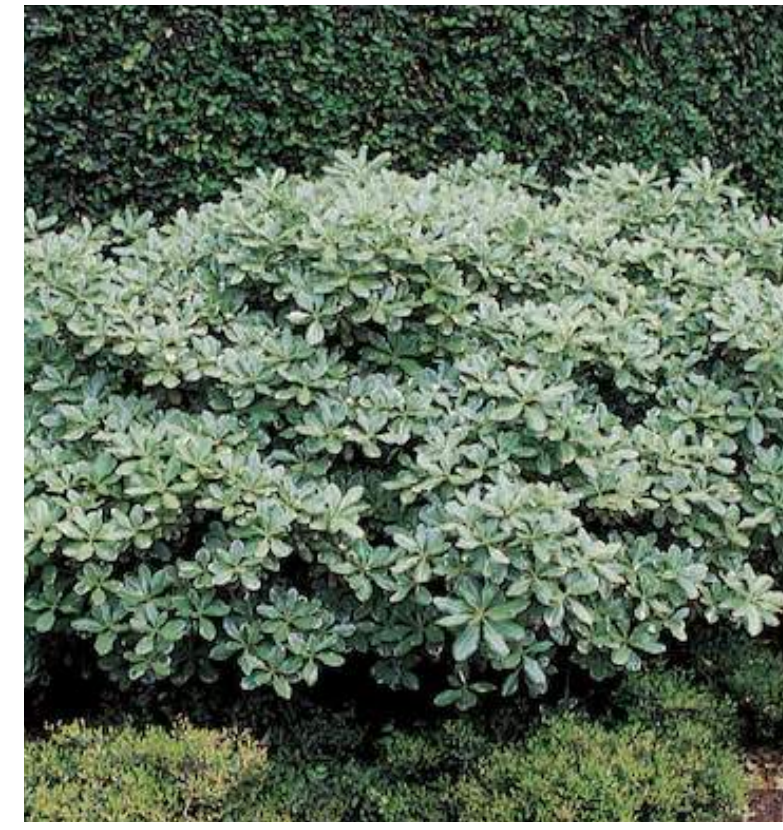
Myrica californica



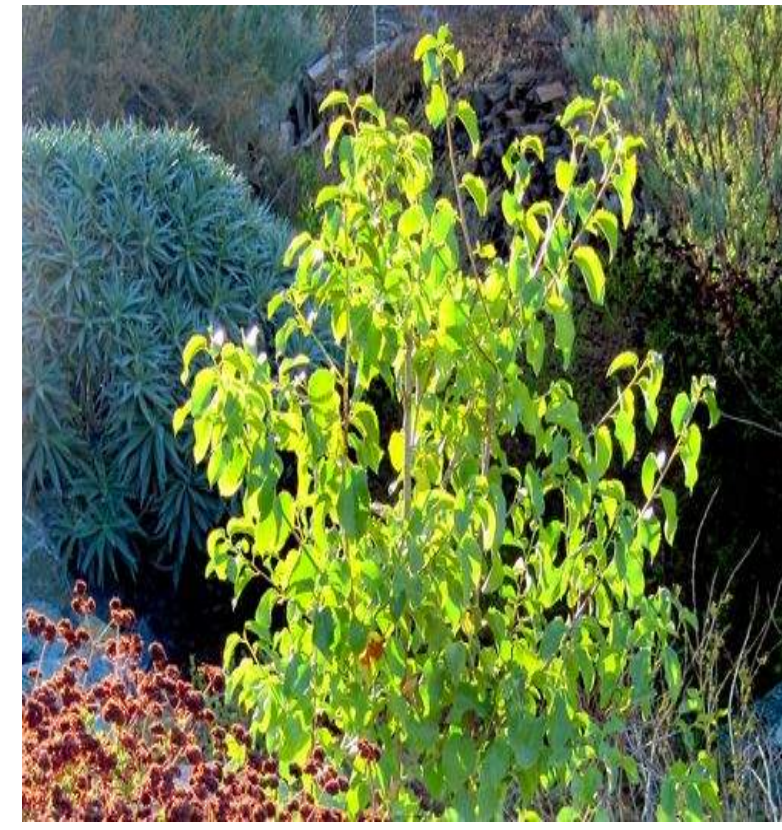
Philodendron xanadu



Phoenix roebelenii



Pittosporum spp.



Prunus ilicifolia



Raphiolepis i. 'Clara'



Rhamnus c. 'Mound San Bruno'



Ribes viburnifolium



Rosa spp.



Salvia c. 'Winifred Gilman'



Teucrium fruticans



Westringia fruticosa



Yucca filamentosa 'Bright Edge'

PERENNIALS AND GRASSES



Carex divulsa



Calamagrostis acutiflora 'Stricta'



Deschampsia c. holciformis



Festuca californica



Helictotrichon sempervirens



Kniphofia uvaria 'Little Maid'



Lomandra 'Lime Turf'



Muhlenbergia rigens



Muhlenbergia 'Regal Mist'



Sysyrrinchium angustifolium

PLANT LIST IMAGERY

January 17, 2022



MALLARD POINTE  
Belvedere, California

MALLARD POINTE  
1951 LLC  
Project Sponsor

THE GUZZARDO PARTNERSHIP INC.  
Landscape Architects - Land Planners  
181 Greenwich Street  
San Francisco, CA 94111  
T 415 433 4672  
F 415 433 5003

L-3.1

GROUNDCOVERS AND VINES



Aeonium arborescens 'Tip Top'



Arctostaphylos 'Emerald Carpet'



Asteriscus maritimus 'Compacta'



Ceanothus gloriosus 'Emily Brown'



Cerastium tomentosum



Eounymus fortunei coloratus



Erigeron glaucus



Fragaria chiloensis



Iris douglasiana 'P. Coast Hybrids'



Myoporum 'Pacificum'



Lantana ssp.



Lavandula angustifolia 'Hidcote Blue'



Thymus praecox 'Coccineus'



Bougainvillea 'California Gold'



Bougainvillea 'Barbara Karst'



Trachelospermum jasminoides

PLANT LIST IMAGERY

January 17, 2022



MALLARD POINTE  
Belvedere, California

MALLARD POINTE  
1951 LLC  
Project Sponsor

THE GUZZARDO PARTNERSHIP INC.  
Landscape Architects - Land Planners  
181 Greenwich Street  
San Francisco, CA 94111  
T 415 433 4672  
F 415 433 5003

L-3.2