

**Mount Pocono Borough Council
Work Session Agenda
Tuesday, June 21, 2022 | 6:30pm**

Call To Order

Roll Call:

_____ Norman DeLano, _____ Ann Marie Harris, _____ Vacant, _____ Lori Noonan,
_____ Ella Santiago, _____ Don Struckle, _____ Claudette Williams _____ Mayor Altemose

Pledge of Allegiance

Public Comment (agenda items only):

Caroline Bartczak – The Chicken Sanctuary

New Website Presentation

- Kevin Herman, ProudCity
- Highlights: meetings section, search feature, online payments through Stripe, easy-to-edit

Big Belly Trash and Recycling Cans

- Josh Ehrhard
- High Capacity vs. Standard Capacity; Lease vs. Purchase
- Cost can be covered by the \$25k recycling grant funds

Council Vacancy Candidate Interviews

- Debra Fulton
- Brian Kelly

MPMA Board Candidate Interview

Constable Candidate Interview

Chicken Ordinance

Shopping Carts

Park and Recreation/Maintenance Position

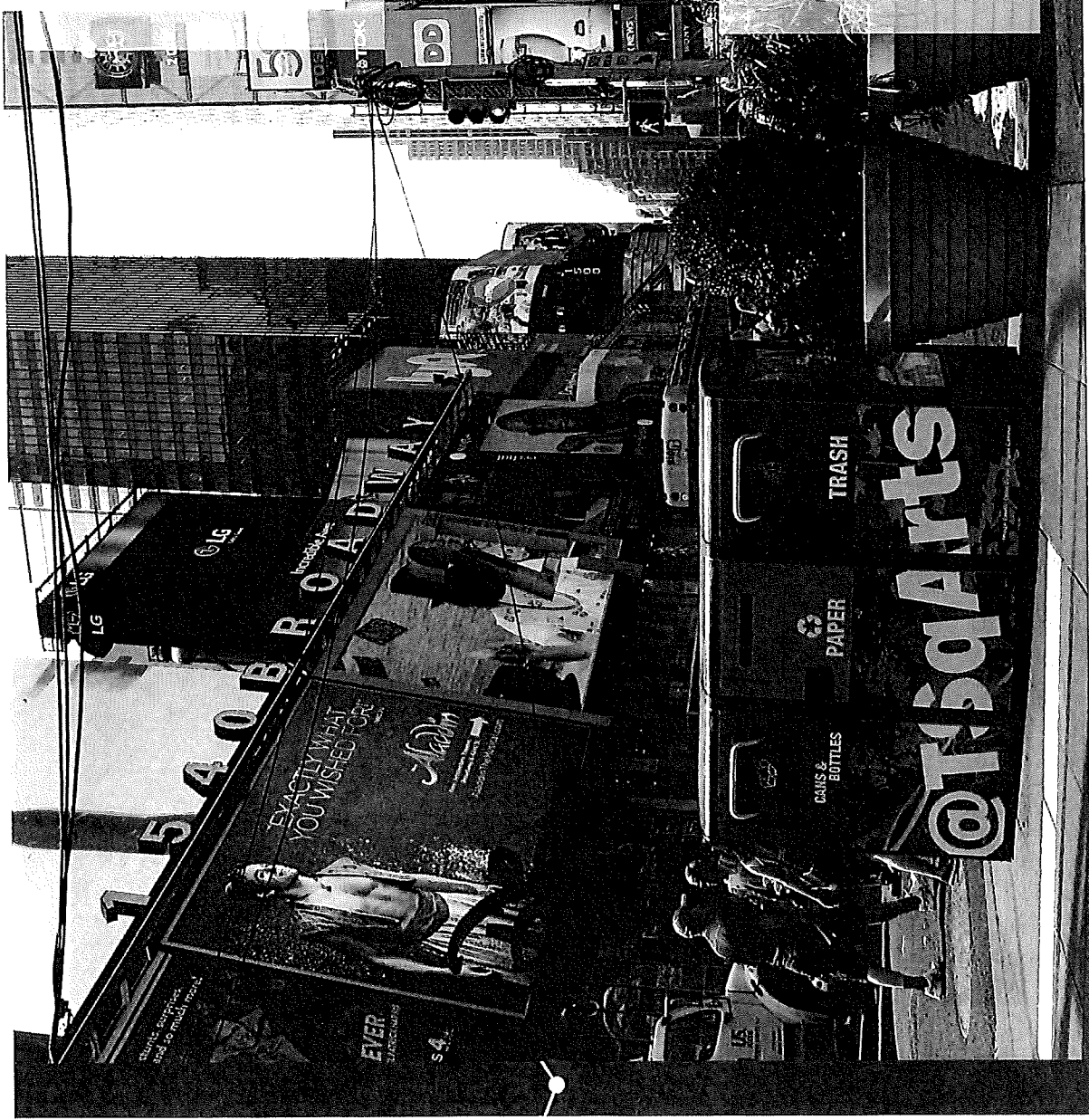
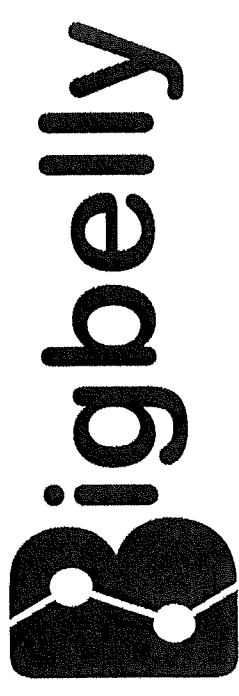
- Request to increase Samuel Pugh's hours from 20 to 30 per week at the same rate of \$15/hour. This would increase the weekly amount from \$300/week to \$450/week. Assuming there are 15 weeks left of grass cutting and landscaping this will amount to \$6,750 over the next 15 weeks. The budget has room for \$8,000 for the remainder of the year.

Reminders:

- ✓ **Town Hall** – Saturday, August 13 at 10am
- ✓ **Community Yard Sale Dates** – June 24-26; August 26-28
- ✓ **First Fridays** – July 1; August 5; September 2

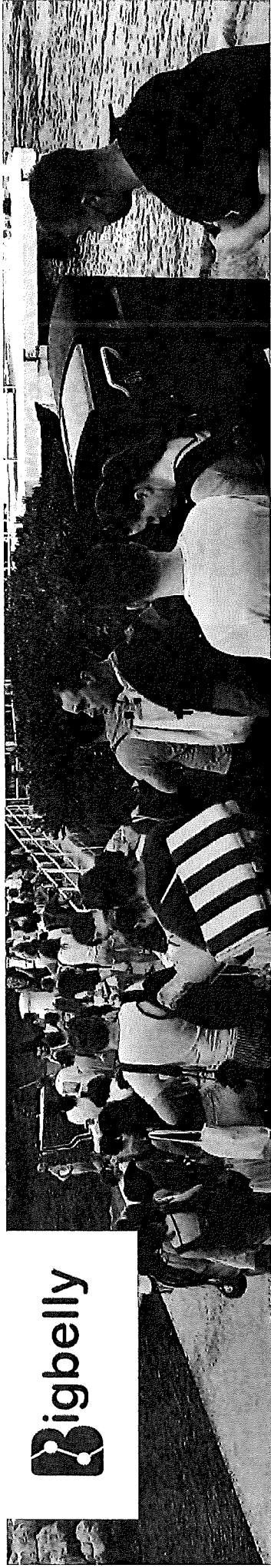
Public Comment

Adjournment



Bigbelly Overview

*The World's Leader in Public Space
Waste & Recycling Solutions*



ABOUT

The World Leader in Waste & Recycling Solutions
Serving over 1,800 customers in 60 Countries
18 Years of Experience

MARKETS

Cities, Parks,
Transit Systems,
Colleges & Universities,
Corporate Campuses, Retail,
Sports Venues, Airports

EXAMPLE CUSTOMERS

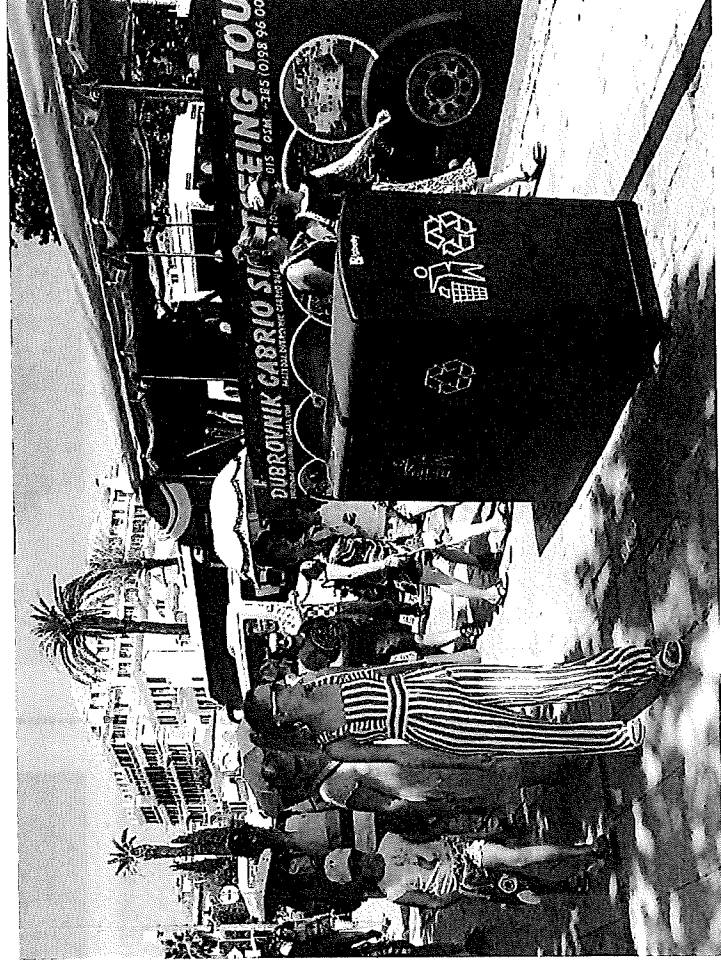
Amsterdam, Atlanta, Chicago, Dublin,
Los Angeles, London, Melbourne,
New York City, Philadelphia, Stockholm

Harvard, MIT, Trinity College, Brown,
UC System, Northern Arizona, LSU,
Texas A&M, Virginia Tech, U. Georgia

Charlotte Airport, Navy Pier Chicago,
Prague Zoo, Wegmans, Caterpillar,
Microsoft, Google, Gillette Stadium

Bigbelly - Your *Total Waste Solution* for Public Spaces

- ✓ Hide Waste & Contain Waste
- ✓ Appealing Design
- ✓ Ease Waste Operations
- ✓ Achieve Sustainability Goals



Hide Waste & Contain Waste

Cleaner, safer public spaces and improved guest experience

Fully Enclosed – Total Waste Containment

- No visible waste
- No windblown litter
- No pest access or pilfering

High-Capacity Compactors

- For High waste volume locations
- Reduced bin footprint
- Fewer interruptions due to waste collections

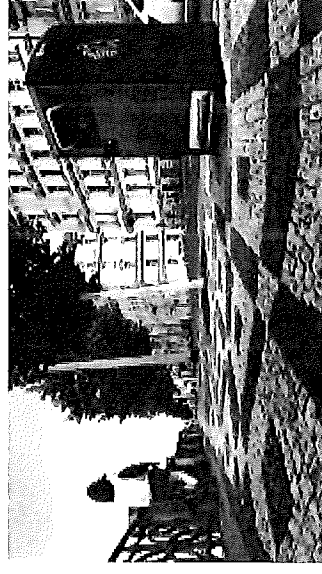
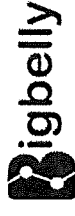
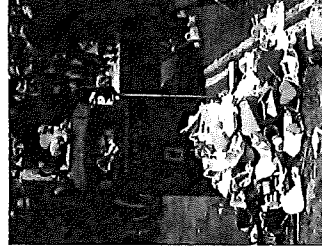
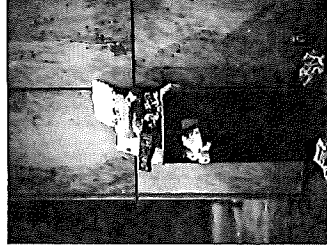
Smart – Fullness & Overflow Notifications

- Eliminates overflows
- Notifies when to collect

Hygienic

- Hands-free, no-touch interface
- No public exposure to waste
- Reduces workforce exposure to waste

Traditional Bin



Appealing Design

Attractive and engaging waste & recycling stations

Aesthetics

- Fit for public space venues
- Uniform design

Standard & Custom Graphics

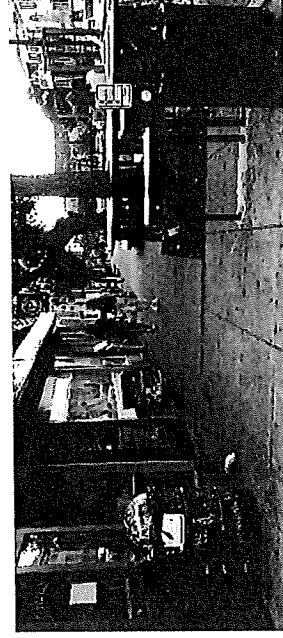
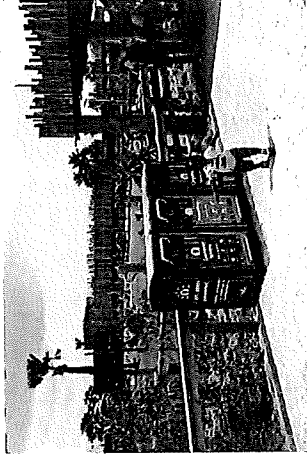
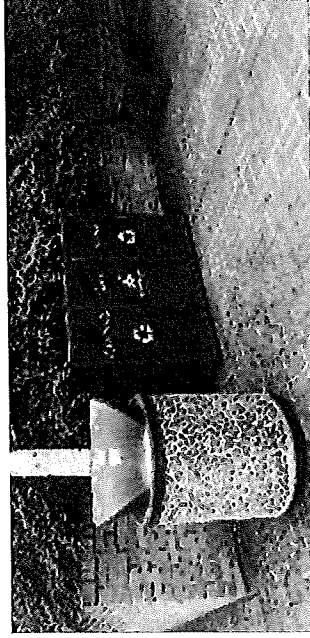
- Choice of standard graphics
- Custom graphics to best fit your venue

Message Panels

- PSAs, Venue messaging
- Easily interchangeable



Traditional Bin



Ease Waste Operations

Less time collecting & cleaning up waste, more time for other tasks

Minimize Cleanup

- Reduce bin overflows & windblown litter
- Eliminate pest access or pilfering

Reduce Collections up to 80%

- High-Capacity 5X traditional bin
- Fullness Alerts – know when to go

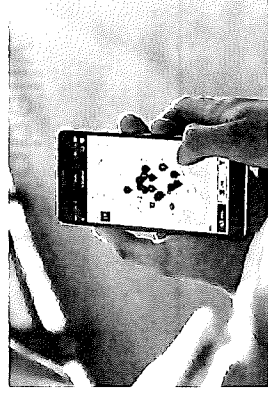
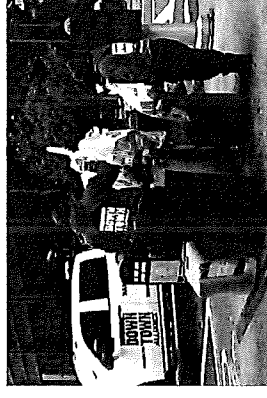
Reduce Occupational Hazards

- Reduce frequency of lifting
- Public exposure to unsanitary waste
- Interactions with pests

Traditional Bin



igibelly



Achieve Sustainability Goals

Provide a uniform and measurable recycling program, reduce fuel use and GHG emissions

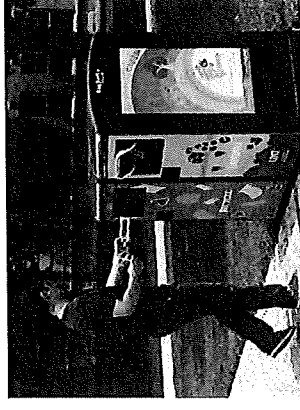
Introduce Uniform Recycling Program

- Any combination of waste, recycling and compost streams
- Measurable recycling diversion

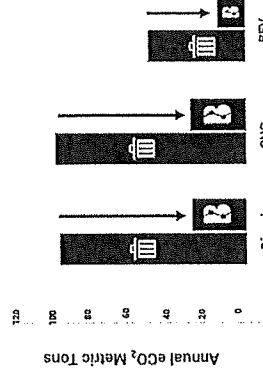
Reduce Fuel Consumption & GHG Emissions by 50% - 70%

- Reduce mileage as a result of reduced collection trips
- Improve MPG by downsizing collection vehicle type

Traditional Bin



Class 8 Refuse Truck – Annual Lifecycle Emissions



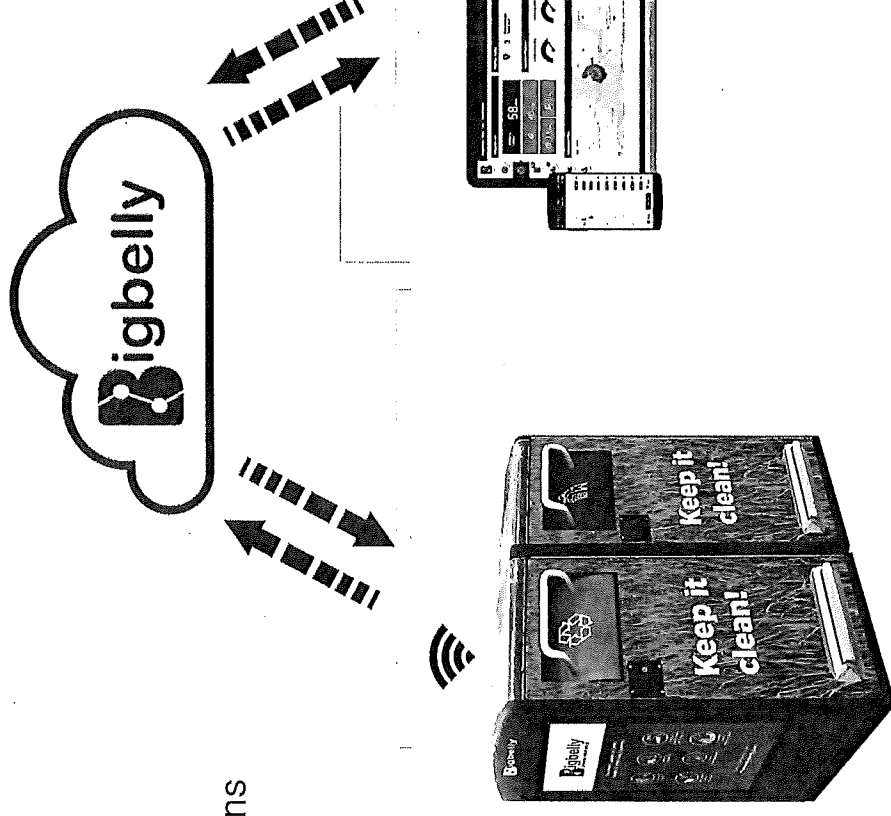
Bigbelly – System Overview

Portfolio of Waste & Recycling Bins


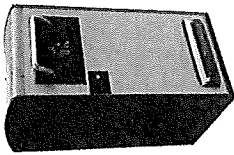
- High & Standard capacity bins
- Choice of waste & recycling interface options
- Standard & customizable graphics
- Assortment of accessories

Suite of Software Tools

- CLEAN™ Management Console
- CLEAN™ Mobile apps



Portfolio of Waste and Recycling Bins

SHC5

SMART
Compactor

150 Gal Capacity


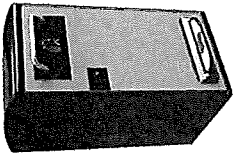
Complete Containment

Overflow Prevention

Collection Confirmation

Fullness Notifications

\$\$\$\$

SSC5.5

SMART
Non-compactor

50 Gal Capacity

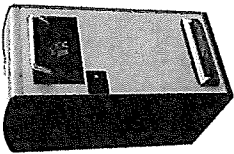
Open Interface Option

Overflow Prevention

Collection Confirmation

Fullness Notifications

\$\$



BHC5

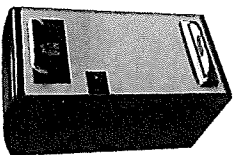
BASIC
Compactor

150 Gal Capacity

Complete Containment

Deployed with other Smart Bins or Fixed Collection Schedule

\$\$\$



BSC5.5

BASIC
Non-compactor

50 Gal Capacity

Open Interface Option

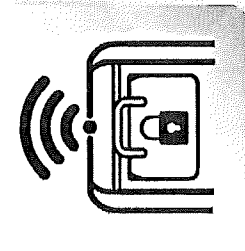
Deployed with other Smart Bins or Fixed Collection Schedule

\$

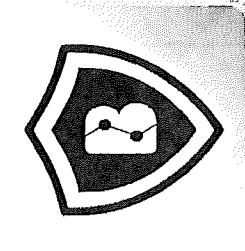
Bigbelly Accessories



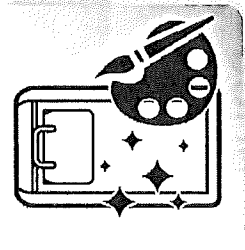
Bigbelly Access
Control System



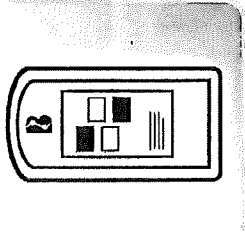
Remote Hopper
Lock



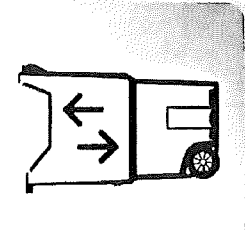
Security Management
System



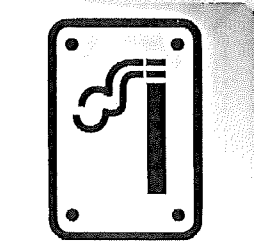
Custom Station
Wraps



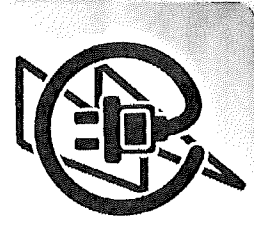
Side & Rear
Message Panels



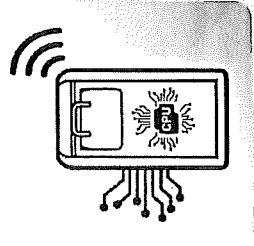
Telescoping
Lift Bin



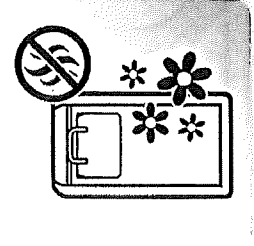
Ash Tray &
Stub-Out Plate



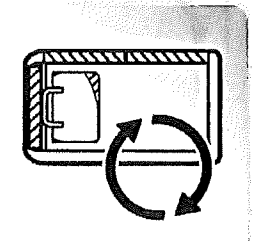
AC Adaptor



CORE+ Module

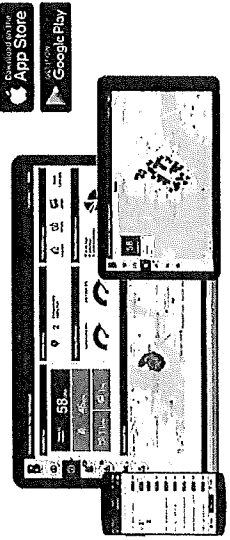


Odor Mask



Station Refresh
Package

Software Suite



CLEAN™ Management Console
Management Platform
for Bigbelly Waste System

Dashboard for Full System Overview

Asset Tracking for Smart & Basic Bins

Notifications & Reports for Smart Bins

Cloud, Mobile App & API

- Cloud-based Software enables system setup, management, monitoring, and optimization
- Centralized Dashboard with real-time collection status and metrics
- Auto-generated Collection Notifications notify teams when to collect
- Full Suite of Reports enable users to prioritize collections & optimize ongoing operations
- Data Export Capability & API to support 3rd party reporting systems and dashboards





Bigbelly

Thank You!

Discover more at www.bigbelly.com



HARDWARE CONFIGURATION

Options & Accessories

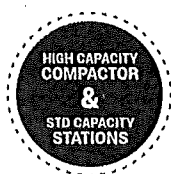
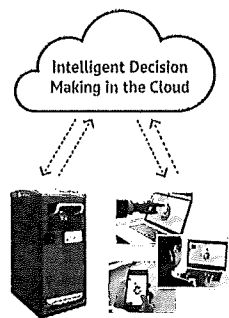


Bigbelly's Suite of Smart, Connected Waste & Recycling Stations

Bigbelly is the world leader of smart waste & recycling solutions for public spaces. Communities deploy smart, solar-powered, sensor-equipped waste & recycling stations that communicate their real-time status to streamline waste management operations.

Each Bigbelly deployment is comprised of a customized fleet of smart waste & recycling stations.

An assessment of the unique challenges and needs of each public space determines the best suited combination of capacity, waste stream, and accessories/options. Stations can be configured as standalone single stations or as multi-stream double or triple stations to accommodate collection of multiple waste streams. The full suite of smart stations are field-proven to be durable and street-tough across all environmental conditions.



MULTIPLE CAPACITIES

Available to match varying waste volume needs in every location.



SELF-POWERED

All stations are self-powered (compactors are solar-powered). Stations do not require connection to an electrical grid.



SMART

Each smart station analyzes and monitors its status to make decisions about communications, fullness & alerts.



SENSING

Sensors located inside each station continuously measure the fullness status, station access, and collection activity.



GPS ENABLED

On-board GPS provides accurate and up-to-date geolocation for the most precise location-based data.



CONNECTED

Smart stations communicate real-time status & activity to the cloud management system via cellular connection.

High Capacity Stations (HC5)

Smart, Solar-Powered Compacting Model

- Senses & Communicates Fullness Level
- Capacity: 150 Gallons (~570 liters)
- Built-in Compactor (5:1 Compaction Ratio)
- Enclosed Design with Hopper

Multi-Stream Kiosk

Modular Multi-station

- Stations are Modular
- Support any Combination of Waste Streams
- Waste Streams Available: Waste, Recycling,
- Single Stream: Bottles & Cans, Paper, and Compost-Organics.

Standard Capacity Stations (SC5.5)

Smart, Self-Powered Non-Compacting Model

- Senses & Communicates Fullness Level
- Capacity: 50 Gallons (~190 liters)
- Enclosed Design with Optional Hopper

Options & Accessories

- Hands-Free Foot Pedal
- Wheeled Interior Lift Bin
- Graphic Wraps, Message Panels and Stickers
- Ashtray & Stub-Out Plates
- Security System with Security Plates
- External A/C Adapter for Indoor Use

Our Bigbelly system is fully customized to meet the needs and goals of your public space based on enclosure preferences and waste stream (landfill, single vs. multi-stream recycling, compost or organics).

For High Capacity (HC5) compacting units, select a waste stream for the enclosed hopper assembly. HCs are always enclosed with a hopper to ensure a physical barrier between the public and the compaction mechanism. In addition to putting safety first, the HC Hopper provides an always enclosed unit to keep waste in and pests out.

For Standard Capacity (SC5.5) non-compacting units, first select either an open interface with a faceplate (which includes appropriate deposit holes) or an enclosed hopper assembly, then select a waste stream. With the SC Hopper upgrade option, SC units become a completely contained system with a similar aesthetic to HC units' always enclosed design. The SC Hopper keeps waste in and pests out to ensure public space beautification.

Enclosed Hopper

*Standard for HC5
Upgrade option for SC5.5*



Landfill Waste



Recycling



Compost

Every HC5 and SC5.5 hopper interface now includes a 'hopper sensor' that alerts when the hopper is jammed open and logs a count of hopper openings in the Bigbelly CLEAN software.

Open Faceplate

Standard for SC5.5



Landfill Waste



Single Stream
Recycling



Paper
Recycling



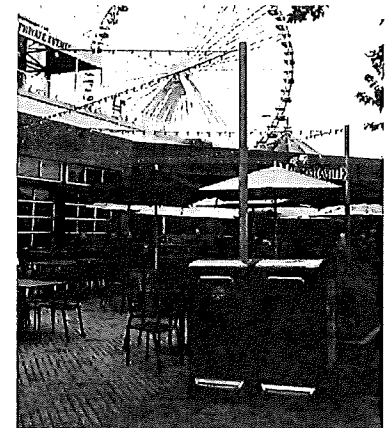
Bottle & Cans
Recycling



Example of HC-SC-HC Triple Station
with HC Hopper for Cans & Bottles Recycling,
SC Faceplate for Paper Recycling
and HC Hopper for Trash



Example of SC-SC Double Station
with SC Hopper for Recycling
and SC Hopper for Trash



For hands-free waste disposal, Bigbelly offers a foot pedal for current generation High Capacity (HC5) and Standard Capacity (SC5.5) stations. Add the amenity and functionality of a foot pedal to enclosed, hopper-equipped stations in your public spaces. Stations with foot pedal upgrade feature the durability and quality of standard compacting and non-compacting stations plus the convenience of hands-free operation, all while keeping waste contained and pests at bay.



- The step-on foot pedal feature allows for hands-free operation of any HC5 station, and any SC5.5 station that is upgraded to an enclosed hopper interface .
- The foot pedal is crafted and constructed with strong and durable aluminum and stainless steel, engineered for a smooth and effortless step-on operation.
- The foot pedal front door has been designed and tested to last over 10 years of tough operation. Bigbelly's rigorous lifecycle and durability testing coupled with controlled field introductions prove functional and environmental endurance. Safety is a priority with our foot pedal designed to initiate a slow "dampened" opening of the hopper as to not injure a small child or a person in a wheelchair
- Foot pedal operated HC5 and SC5.5 units are self-closing and maintain Bigbelly's proven enclosed design for waste and odor control.

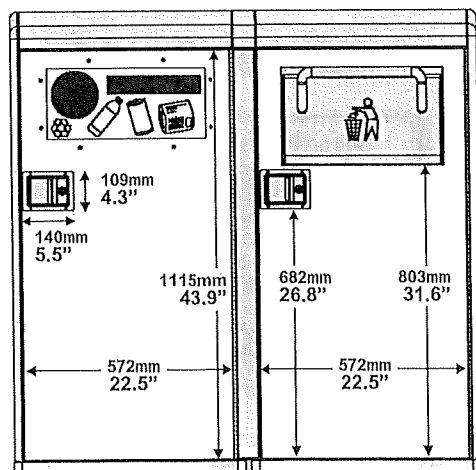
Available factory-installed for any HC5 Components, and SC5.5 Components that are ordered with the SC Hopper.



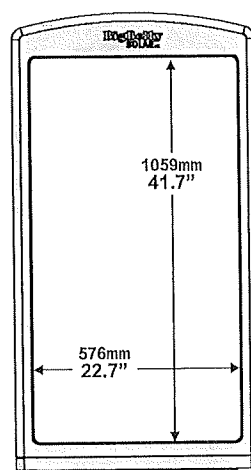
Leverage your Bigbelly stations' hardware as an eye-catching messaging platform. Drive attention to your desired branding impressions and reach your target audience in a concentrated and visible way.

- Any configuration of High Capacity and Standard Capacity model stations can be wrapped on all sides.
- Customizable station wraps are available for any combination of station types.
- Promote your brand, public service announcements, sponsorships, advertising, and more.
- The wraps are full-color durable vinyl material and handle any type of weather while resisting fading.
- Bigbelly's design consultants are available to help you with your design or you can provide your own.
- Anti-graffiti wrap options also available for commonly vandalized areas.
- Factory installed prior to deployment. Refer to **Wrap Spec Sheet** for full dimensions & additional information.

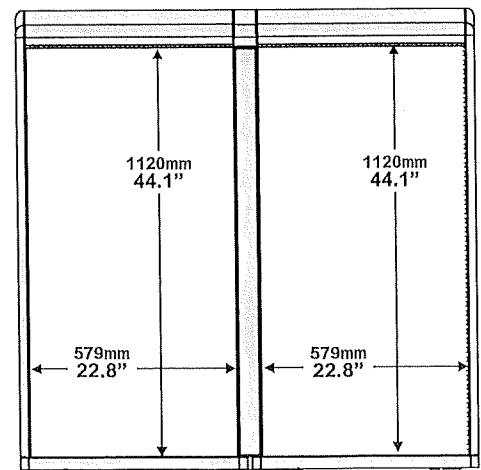
STATION WRAP DIMENSIONS



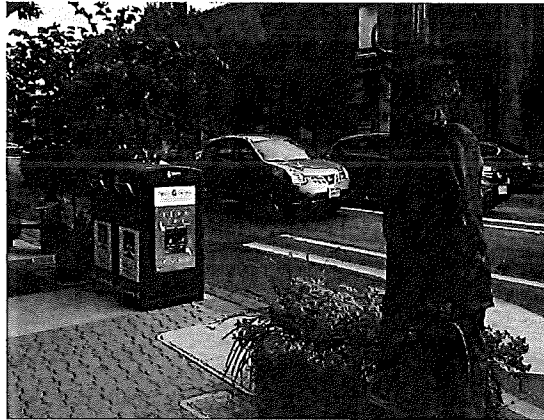
Front / Sidewalk Facing



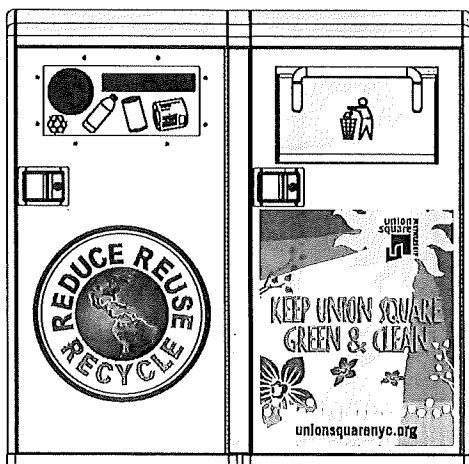
Side of Station



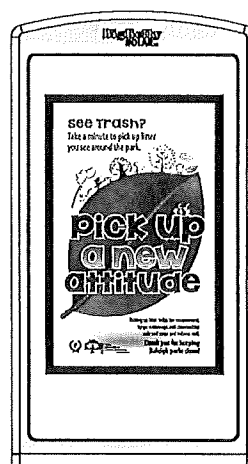
Rear / Street Facing



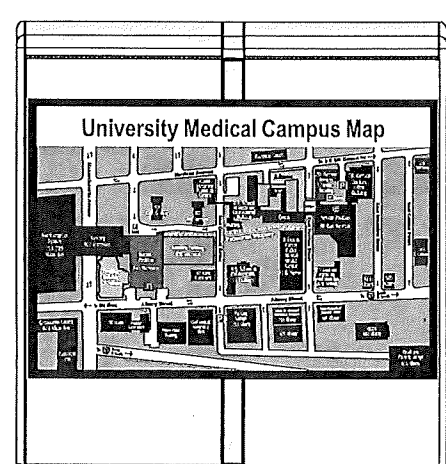
- Message panels are perfect if you plan to change out your messaging/advertising regularly for events, seasonal campaigns, or rotating public service announcements.
 - Message panels are frames to protect and display posters or ads on the sides of stations.
 - Frame access is secured with tamper-resistant screws which are easy to use to change out graphics
 - Powder coated aluminum frame with clear polycarbonate face is durable and weather resistant.
 - Factory installed panel; advertisement interchangeable in the field.
- Stickers provide you with a smaller, customizable graphic intended to be permanent.
 - Bigbelly's design consultants are available to help you with your design or you can provide your own.
 - Oftentimes a logo is a powerful and lasting design that pairs well with rotating message panels.
 - Factory installed prior to deployment.
- Please refer to **Messaging Options Spec Sheet** for full options, dimensions and additional information.



Stickers / Decals
Front / Sidewalk Facing



Message Panel
Side of Station



Rear Message Panel
Rear / Street Facing

Standardized Labels in Partnership with Recycle Across America

Bigbelly's world leading smart waste and recycling solution notifies collection crews when bins are ready for pick-up, then measure and report on recycling diversion. This smart, sustainable solution provides uniform recycling program and offers distinctive, standardized recycling education at the point of disposal... a win-win!

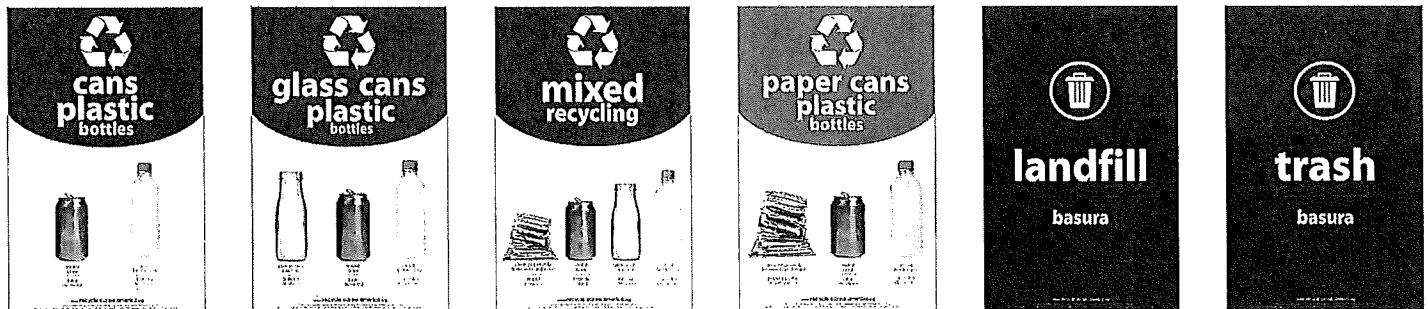


Bigbelly has partnered with Recycle Across America (www.recycleacrossamerica.org), the 501(c)(3) nonprofit organization on a mission to implement a standardized label solution to make it easy for society to recycle right. Let's recycle right! Our partnership delivers RAA's standardized labels custom-sized for Bigbelly's smart waste & recycling stations - compatible with both High Capacity (HC) and Standard Capacity (SC) models.

Standardized labels further enhance the impact of Bigbelly's uniform system that measures and reports on recycling diversion while reducing communities' overall environmental footprint. Help make your recycling programs thrive with Recycle Across America's standardized labels on your new Bigbelly stations.

Recycle Across America offers labels for every sorting need that come in two sizes: 11x17-inch (for placement on the station front doors) as well as Message Panel Inserts with their celebrity Let's recycle right! PSAs (18x30-inch).

Explore and order standardized labels custom-sized for Bigbelly units: www.recycleacrossamerica.org/bigbelly-bins



Recycle Across America has created the world's first and only society-wide standardized labels for bins to make it easy for people to recycle right wherever they are, and therefore help recycling and closed-loop manufacturing begin to thrive. The standardized labels are proven to increase recycling levels 50-100% and dramatically decrease the amount of contamination (aka garbage) thrown in recycling bins; therefore, improving the financial viability of recycling.

Bigbelly offers ashtrays and stub-out plates to encourage proper disposal of cigarettes in your outdoor public spaces.

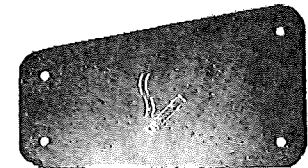
OPTION 1: Ashtray with Stub-Out Plates

- The ashtray is accessible by the user on the front door beneath the hopper.
- The ashtray bin is easy to empty when collecting the station's waste.
- The stub-out plates are located on each side of the station to encourage smokers to stub out their cigarette on the intended plate rather than the HC5's plastic solar panel bubble or exterior plastic.
- Ashtray and two stub-out plates per station are factory installed.



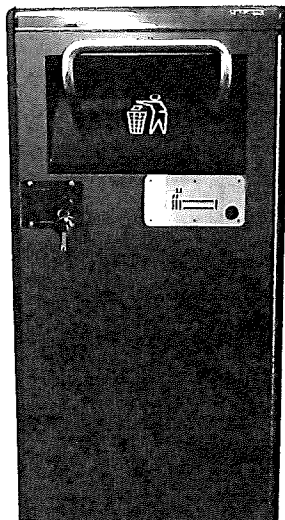
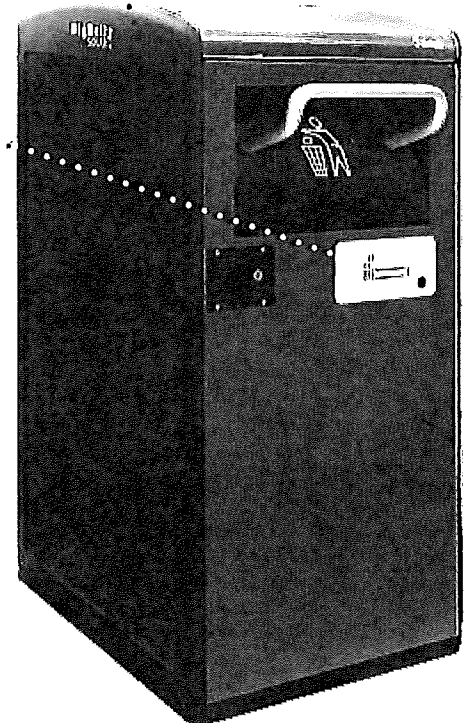
OPTION 2: Stub-Out Plates (2 per station)

Available for HC5 Components.

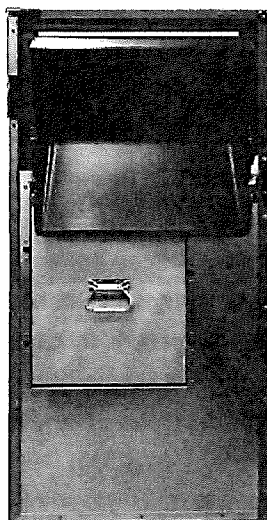


Stub-Out Plate

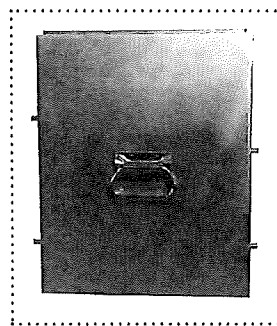
Ashtray with Built-In Stub-Out Plate



Front Door



Inside Front Door



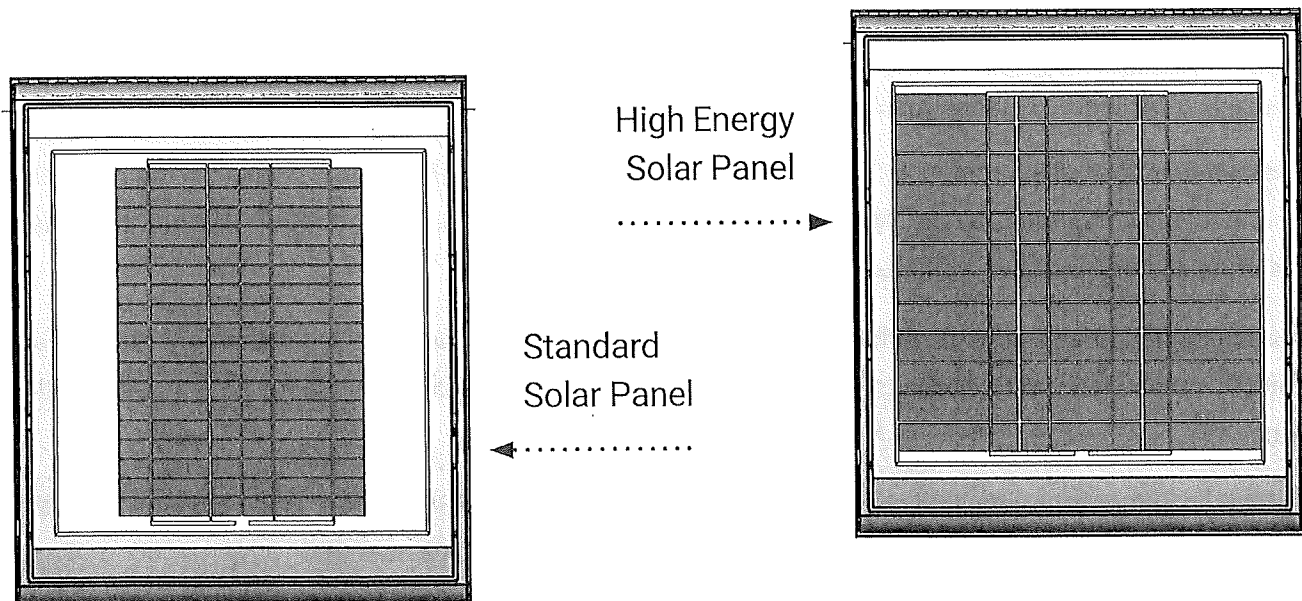
Removable Ashtray



Bigbelly recommends an High Energy Solar Panel for an European, Canadian, or urban canyon locations (tall skyscrapers blocking light from the street level) to ensure plentiful energy collection.

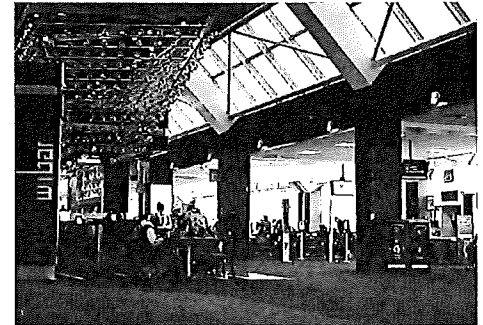
Solar-powered waste compactors must function successfully over the life of the station using only the solar energy available at waste bin locations. This means success without direct sunlight, in high latitudes, short days of winter, high traffic, and shaded locations. While the standard HC5 solar panels pack a punch, some areas of the world simply do not get as much sunlight as others. Consider the short daylight hours of Northern Scandinavia and Canada compared to the long sunny days of Australia and the Middle East, or the "urban canyons" of New York City compared to a suburban college campus.

High Energy Solar Panels are factory-installed prior to deployment and will be recommended by your account manager if needed. All HC5 solar-powered waste compactors come equipped with Bigbelly's patented energy management technology. High Energy options are not required or available for the battery-powered SC5.5 model.



Take the benefits of the Bigbelly system indoors! Leveraging a low-energy external power supply, indoor public spaces can provide power to Bigbelly stations for compaction and communication with CLEAN.

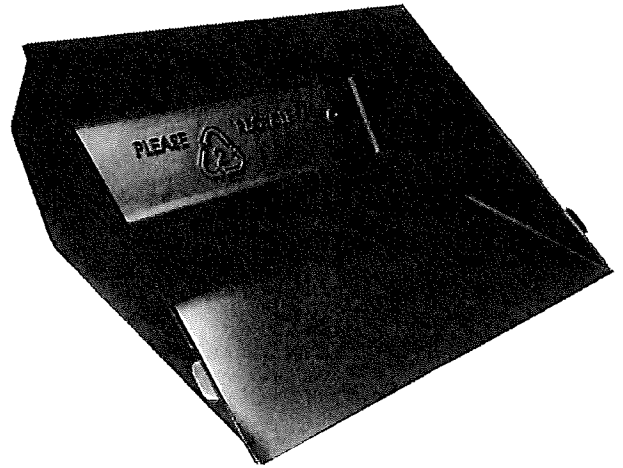
The Bigbelly system can be used indoors in public spaces such as airports, corporate offices, indoor cafeterias, malls & retail venues, university residence halls, underground transportation, and healthcare facilities.



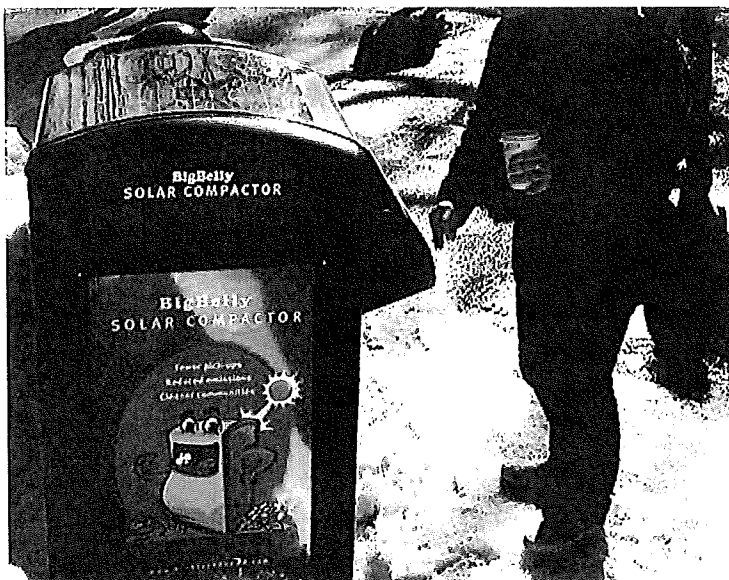
- The fundamental design of the Bigbelly HC station only utilizes low voltage (12V) inside the station. All energy required for compactions, communications, and standby is pulled from a 12V battery. The use of low voltage and a grounded chassis eliminates any possible for electric shock.
- If the Bigbelly station is unplugged, the battery can power the station for a maximum of 30 days without trickle charge or the need for direct sunlight. Alerts will be sent automatically from CLEAN if the battery is experiencing drainage.
- Indoor usage of HC5 model station runs on the same safe, low voltage system with battery storage.
- The addition of an A/C adapter turns HC5 stations into a hybrid system with two power sources in the case that your station is ever moved for outside use. The Bigbelly HC station uses a fully certified DC power adaptor that is located outside of the station and uses less than .25A at 120V.
- This power adaptor provides the DC voltage to the station that is used to charge the internal battery. The A/C adapter plugs into the back of the station using standard 110/220 Volt outlets with plug connectors for USA, UK, and European markets.
- External Power Supply is not required or available for the battery-powered SC5.5 model which properly functions in either indoor or outdoor environments. The SC5.5's Alkaline battery has a lifespan of ~8 years.

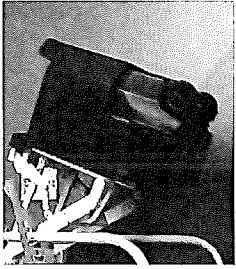
Bigbelly offers removable Hopper Liners that are easy to clean off-site and will keep your HC and SC hopper interiors neat and tidy.

While Bigbelly's stations are built street tough and durable, receptacles in areas with high amounts of organic waste - such as ice cream shops, food courts, picnic areas, and transit stops - can leave unsightly hoppers. Eliminate the complaints and the mess by adding hopper liners to your stations.



- Help keep surfaces presentable: hopper liners are recommended to keep the main chute to the interior bin as clean as possible when patrons deposit waste.
- Deters bees and bugs: Sugary foods and drink residue attract bees and other insects. Keep the hopper clean to prevent your station from becoming a bug magnet.
- All HC5 stations and SC5.5 stations with SC Hopper upgrade ship with one hopper liner; additional are available to purchase as spare parts. Two hopper liners per station are recommended - one for station use and one for replacement when the alternate is being cleaned. The durable plastic design is tested to withstand pressure washing. Multi-time use is encouraged.
- When hopper liners are ready to be permanently replaced after multiple uses, they can be recycled.



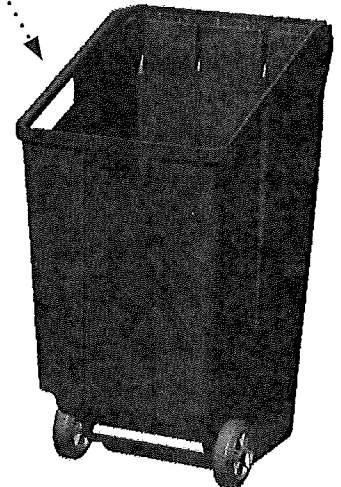


Refuse collection trucks with a semi-automated lift arm loader are increasingly popular around the world for waste collection. Semi-automated collection vehicles feature a lift arm compatible with wheeled bins. This collection technique eases collection work while reducing the risk of injury due to lifting or maneuvering heavy waste bins. For customers using bar- and comb- style semi-automated lift arm collection vehicles, Bigbelly offers a durable and ergonomic wheeled lift bin. This lift bin option is available for both HC and SC units instead of the standard inner bin.

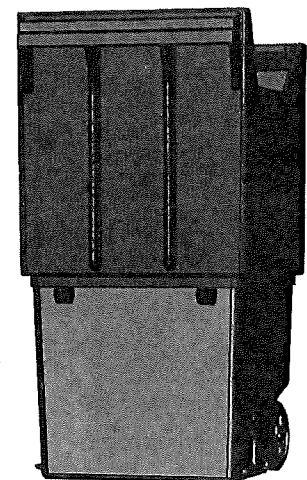
- Semi-automatic collection trucks with wheeled lift bins are increasingly used to reduce the heavy lifting associated with refuse collection. This is an advantage for many cities and towns which strive towards the most safe and productive waste collection.
- The combination of the lift bin collection technique and optimized use of the Bigbelly smart waste and recycling system provides the most efficient public space waste operations.
- The **Telescoping Lift Bin** is the only lift arm compatible bin proven to work effectively with compaction technology. The wheeled lift bin for HC features a patented telescoping design which allows it to be identical in size to a standard HC5 interior bin when collapsed. It expands vertically to support compatible lift arm collection systems.
- The **SC Lift Bin** features a custom wheeled design, allowing for ergonomic collection with purpose-built fit for the station to ensure proper waste flow into inner bin while matching height requirements.
- Both HC and SC Lift Bins are available in either comb-style and bar-style lift arm versions. New orders and field upgrades are available for use with current generation stations designated for any waste stream.
- Lift-Arm Mechanism Compatibility:
 - Bar-Style: US 2-Bar; Type B (ANSI Z245.60-2008)
 - Comb-Style: DIN EN 1501-5

SC Lift Bin

Purpose-Built Design for Ergonomic Collection & Proper Waste Flow



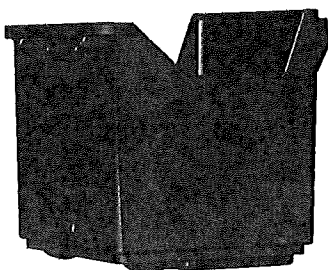
Expanded Lift Bin



HC Lift Bin

Patented Collapsing Bin Design for Maximum Compaction Capability

Collapsed Lift Bin



Pictured: Comb-Style Lift Arm
Also available: Bar-Style Lift Arm

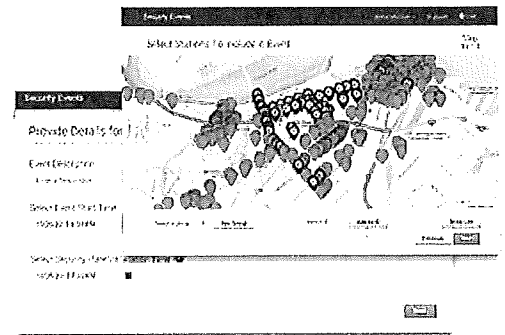
For high profile public space events, Bigbelly offers a complete security package for your system. The Bigbelly Security System consists of two components - the Security Management Module within CLEAN that enables operations to set up and manage security events and physical Security Plates that prevent access to the stations.

The Bigbelly Security System restricts physical access to stations and alerts authorities via email or text if a station is breached. The system saves operational time and costs by eliminating the need to remove Bigbelly stations during special events.

SECURITY MANAGEMENT MODEL

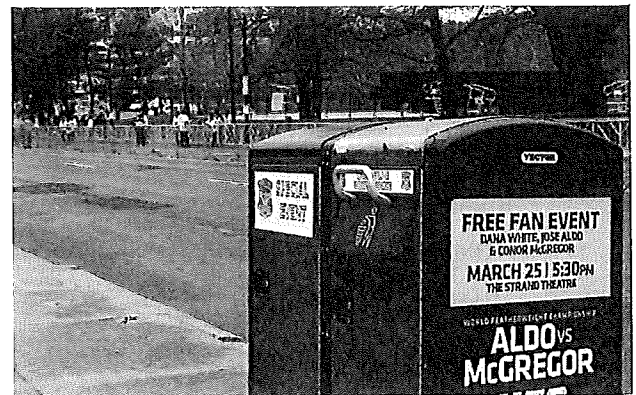
The Security Management Module resides within Bigbelly's CLEAN Management Console and provides the following functionality via an easy-to-use set up wizard:

- **Event Creation** - Create and easily add or delete stations from a security event via interactive map
- **Event Scheduling** - Stations are automatically placed into and removed from Secure Mode based on the specified event start and end time
- **Security Notifications** - Alerts and Notifications can be sent to any staff or law enforcement personnel
- **Security Dashboard** - Easily monitor and manage security events directly within the CLEAN software platform



SECURITY PLATES

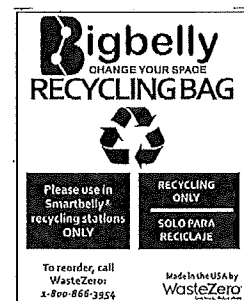
Security Plates are installed during special events to prevent access to your fleet of Bigbelly smart stations. Custom graphics can be added to communicate that the stations are out of service. Security plates are available for purchase by all new customers and existing customers.



Waste & Recycling Liner Bags

Bigbelly recommends the usage of our customized WasteZero waste and recycling bags to optimum performance.

- High Capacity station bags are sold by the case, 50 bags/case.
- Standard Capacity station bags are sold by the case, 100 bags/case.
- Liner bags are available to purchase with all initial Bigbelly station orders. Refills may be purchased from preferred partner, WasteZero, at <https://wastezerobags.com/bigbelly/> or +1-800-866-3954.
- Refer to **Liner Bag Spec Sheet** for compatible heavy duty liner bag specifications and additional information.



Solar Bubble Plastic Cleaning Kit

A three step cleaning and polishing kit is available for the plastic solar bubble of any Bigbelly machine.

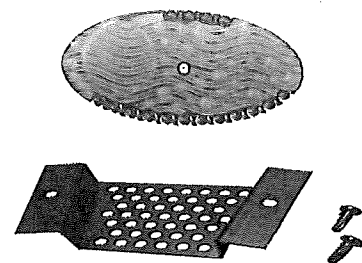
- If your station's solar bubble is appearing cloudy or hazy, we recommend this cleaning & polishing kit.
- Three step cleaning process that clears any dirt or fog from the solar bubble and the solution also fills in any minor cracks or scratches on the plastic.



Station Odor Mask Kit

An odor mask kit and refill pads are available for purchase and field installation for your Bigbelly smart waste fleet. While Bigbelly stations' enclosed design keeps the litter and smells in and the pests out, the odor mask kit is an accessory to keep the stations as fresh as possible.

- The Odor Mask Kit comes with Cucumber Melon scented odor shield pads coupled with a holder.
- Installation into stations is quick & easy; the recommended placement is near hopper or flap opening for best results.
- Refills of the odor pads help to shield the waste odor upon hopper or front-door opening.



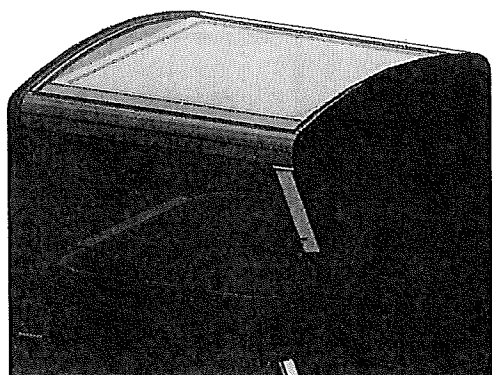
Bigbelly recommends usage of the a Standard Capacity Inner Bin Sleeve for any SC5 or SC5.5 station to proactively protect these public waste stations from unlawful pilfering and for station sensor & fullness reporting accuracy.

Does your public space experience extreme cases of pilfering through landfill or recycling waste streams? Bigbelly has developed our patented SC Sleeve to hold the interior bin's liner bag in place and recyclables or other waste out of reach of the pilferers.



Optional anti-pilfering brackets are available and recommended in urban areas to further constrain the interior bin bag and protect from unauthorized access.

In addition to keeping the bag in place, which deters pilfers from accessing waste in the bin, the patented SC Sleeve also ensures proper sensor readings which connect and communicate fullness via CLEAN software. "Know when to go" and collect your stations when they are ready, rather than making them an easy pilfering target.



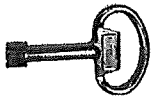
- The Standard Capacity Inner Bin Sleeve ships standard with all SC5 and SC5.5 components. It improves the performance of the system by proactively protecting against unlawful pilfering and ensuring accurate sensor readings.
- This optional Standard Capacity Inner Bin Sleeve proves particularly useful in situations where you continually experience incorrect bag positioning and subsequent errors via CLEAN Management Console. The SC Sleeve's impact on sensor reading and data accuracy is a critical feature of the Bigbelly SC model that differentiates this smart bin from competitive sensor-based waste bin products.
- Bigbelly recommends the use of our preferred waste and recycling bags from WasteZero (www.wastezero.com/bigbelly - available in the USA only) to avoid incorrect bag positioning.
- Additional anti-pilfering brackets (shown to the left) are available to further constrain waste access from station opening. These brackets are easy to install on any station already deployed in the field.

Each generation of Bigbelly stations has featured a lock redesign to increase security and upgrade technology. If you have a Bigbelly fleet which contains a mix of HC3/CR, HC4/SC4, and HC5/SC5/SC5.5 models, a lock option kit is available to streamline collection and maintenance of your fleet with a single key.

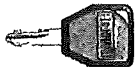
Please contact Bigbelly customer service (support@bigbelly.com or +1 888.820.0300 Ext. 3) to determine the best solution for your lock and key situation. This can also be used to terminate unlawful possession of station keys.

HC5/SC5/SC5.5 Models

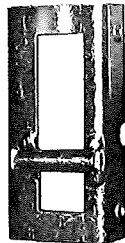
Top Key



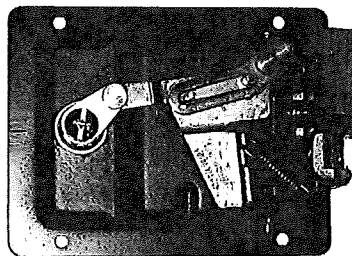
Front Key



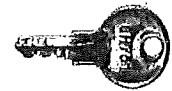
Latch



Back View of Door Lock



Single-Sided
Key Option

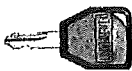


HC4/SC4 Models

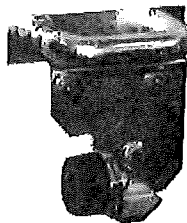
Top Key



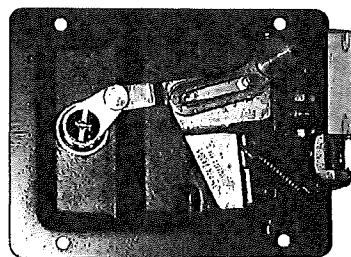
Front Key



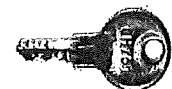
Latch



Back View of Door Lock

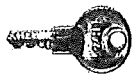


Single-Sided
Key Option

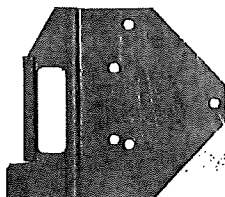


HC3 Models

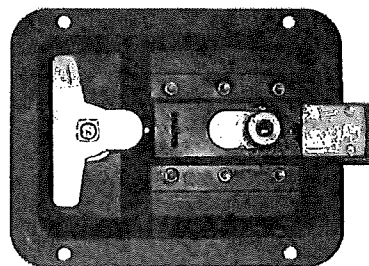
Top & Front Key



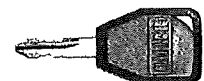
Latch



Back View of Door Lock



Double-Sided
Key Option





Pricing Estimate

Mount Pocono

Estimate Date: 6/1/2022

Joshua Walker

Bigbelly Contact: Josh Erhard

Program: **Capital Purchase**

Includes: Stations, Software, 5 Yr Wty

Stations	Station Quantity	Station Price	Extended Price
HC/SC, No hopper SC	6	\$4,777.50	\$28,665.00

Discount: 3%	Total Price	\$28,665.00
Total Units: 12	Average Unit Price	\$2,388.75



Pricing Estimate

Mount Pocono

Estimate Date: 6/1/2022

Joshua Walker

Bigbelly Contact: Josh Erhard

Program: **Connect - System as a Service - 60 Month Term**

Includes: Stations, Software, Installation, All Parts and Service, Annual Cleaning and Maintenance

Stations	Station Quantity	Station Price	Extended Price
HC/SC, No hopper SC	6	\$3,833.70	\$23,002.20

Discount: 3%

Total Price

\$23,002.20

Total Units: 12

Average Unit Price

\$1,916.85

BOROUGH OF MOUNT POCONO

MONROE COUNTY, PENNSYLVANIA

ORDINANCE NO. ____ OF 2018

AN ORDINANCE AMENDING CHAPTER XXX OF THE CODE OF THE BOROUGH OF MOUNT POCONO CODE.

It is hereby Ordained by the Borough Council of Borough of Mount Pocono, County of Monroe, Commonwealth of Pennsylvania, that Chapter XXX of the Borough Code of Mount Pocono is amended to read as follows:

Chapter XXX NON-COMMERCIAL KEEPING OF CHICKENS

ARTICLE I General Provisions

§XXX-1. Findings and Intent.
§XXX-2. Responsibility.
§XXX-3. Definitions.
§XXX-4. Fees.
§XXX-5. Forms and Procedures..

ARTICLE II Non-Commercial Backyard Chicken Keeping

§XXX-6. Permits Required.
§XXX-7. Standards and Conditions.
§XXX-8. Disposal of waste material.
§XXX-9. Nuisances.

ARTICLE III Violations, Penalties and Costs

§XXX-10. Compliance.
§XXX-11. Fine.
§XXX-12. Other Remedies.
§XXX-13. Permit Revocation.

ARTICLE IV Miscellaneous Provisions

§XXX-14. Repealer.
§XXX-15. Severability.
§XXX-16. Interpretation.
§XXX-17. Effective Date.

ARTICLE I General Provisions

§XXX-1. Findings and Intent.

The Borough Council finds that there is an increase in this Commonwealth among families desiring to be more self-sufficient in the production of food, including the non-commercial keeping of chickens; that the non-commercial keeping of chickens provides social, economic, educational, and environmental benefits; that many people are unfamiliar with chicken keeping, and as a result do not want these activities in their neighborhoods. By adopting this ordinance, Mount Pocono Borough intends to ensure that the interests of all residents are reasonably protected. In adopting this ordinance, this Borough intends to address the growing interest of keeping food producing animals in residential areas in a manner which ensures to ensure public health, safety and welfare. This Chapter shall be construed to secure its expressed intent.

§XXX-2. Responsibility.

The owner and any tenant in possession under the terms of a lease of the property shall be responsible for compliance with the provisions of this chapter and the failure of an owner, tenant, agent, managing agency, or occupants to comply with this chapter shall be deemed noncompliance by the owner and any tenant.

§XXX-3. Definitions. For the purpose of this Part, certain terms, phrases and words are defined as follows:

A. Tense, Gender and Number. Words used in the present tense include the future; words in the masculine gender include the feminine and the neuter; the singular number includes the plural and the plural singular.

B. General Terms. The words "shall," "will" or "must" are always mandatory; the words "should" or "may" are permissive. The words "used for" includes "designed for," "arranged for," "intended for," "maintained for" or "occupied for." The word "building" includes "structure" and shall be construed as if followed by the phrase "or part thereof." The word "person" includes "individual," "profit or nonprofit organization," "partnership," "company," "incorporated association" or other similar entities.

C. Terms, Phrases and Words Not Defined. When terms, phrases or words are not defined, they shall have their ordinarily accepted meaning or such as the context may imply.

D. Specific Terms. The following words and phrases when used in this chapter shall have the meanings given to them in this section unless the context clearly indicates otherwise

“Chicken.” Female poultry or fowl of the species gallus domesticus.

“Coop.” A structure, either portable or permanent, to shelter chickens.

“Owner.” The person who owns the land where the keeping is being performed. The owner bears responsibility for any legal action in this ordinance.

“Pen.” A fenced area designed to contain the animal to a restricted area, and prevent animals roaming at large.

“Permit officer.” Official designated to process permit applications and inspect locations to ensure compliance with this ordinance. The Borough Council may appoint one (1) or more persons as Permit Officer(s), who may be the Borough Zoning Officer or Code Enforcement Officer, a Pocono Mountain Regional Police officer, or a contracted individual, firm or agency, to administer this chapter.

“Permittee” The person to whom the permit is issued a permit for keeping.

“Receipt of notice.” The typical time for a letter to arrive by mail. For this ordinance the typical time is three business days from the day the letter was mailed. Notice in person is receipt of notice.

“Rooster.” Male poultry or fowl.

“Veterinarian.” A veterinarian who cares for the specific animal type.

“Waste material.” The natural waste produced by keeping activity, which may include feces, soiled hay or bedding. It does not include the carcass of any animal.

§XXX-4. Fees.

Fees for the administration of this chapter shall be charged in accord with the fee schedule adopted by Resolution of the Borough Council.

§XXX-5. Forms and Procedures.

Registration and application forms and procedures shall be as required by this chapter or as otherwise amended or adopted by Resolution of the Borough Council.

ARTICLE II

Non-Commercial Backyard Chicken Keeping

§XXX-6. Permits Required.

(a) General rule.--Permits for keeping chickens in the Borough shall be issued in accordance with this section. The keeping of any chickens in the Borough without a permit is a violation under this Chapter.

(b) Application.--

(1) An applicant must complete and submit an application provided by the permit officer and pay all fees required hereunder.

- (2) A complete application shall include:
- (i) proof that the applicant is the owner of the land, or that the applicant is a lawful resident of the land and has express written permission from the owner where the activity will take place;
 - (ii) a statement that the location is in compliance with the section XXX-7 requirements;
 - (iii) all fees are paid in full;
 - (iv) a statement that the land contains at least one residential dwelling;
 - (v) a statement that, upon the issuance of a permit hereunder, the proposed permittee and owner irrevocably consent to inspections by the permit officer, with or without notice, conducted in a reasonable manner and at a reasonable time, of the coop, the pen, the permittee's chicken keeping operation, and for compliance with this Chapter;
 - (vi) a statement that, upon the issuance of a permit hereunder, the proposed permittee and owner, agree to rely on the reasonable, good faith judgment of the permit officer as to the existence of noise or odor in violation of this Chapter;
 - (vii) a statement that, upon the issuance of a permit hereunder, the proposed permittee and owner, agree that the permit officer, or the permit officer's designee, shall be empowered to undertake, and permitted to enter the subject property for the purposes thereof, any corrective, abatement, or compliance action which the permittee has been directed to but has failed to undertake under this chapter, and that all of the costs and the expenses of the same shall be the liability of the permittee and owner;
 - (viii) identify the permittee's intended Veterinarian.
- (c) Issuance of permit:
- (1) A permit application will not be approved unless the applicant affirmatively demonstrates that the following conditions are met:
 - (i) the information contained in the application is correct;
 - (ii) the requirements for a permit have been met; and
 - (iii) the proposed location is consistent with section XXX-7.
 - (2) If all conditions are met, the officer shall issue the permit within five (5) business days.
- (d) Suspension, revocation, and non-renewal of permit.--
- (1) The permit officer may suspend, revoke, or decline to renew any permit issued for any of the following reasons:
 - (i) false statements made on the application or other misinformation provided to the permit officer by the applicant;
 - (ii) failure to pay any penalty, inspection, re-inspection, or reinstatement fee required by this section;
 - (iii) failure to correct deficiencies noted during inspections in the time specified by the permit officer;
 - (iv) failure to comply with the provisions of an approved mitigation/remediation plan by the permit officer;
 - or
 - (v) failure to comply with any provision of this ordinance.
- (2) Notification:
- (i) revocation, suspension, denial or nonrenewal of a permit shall be in writing, and delivered (A) by ordinary mail; (B) in person to the address indicated on the application; or (C) presented by hand delivery to the person.
 - (ii) The notification shall state the reasons for the action.
- (e) Effect of revocation.--
- (1) When a permit is revoked, the applicant may not re-apply for a new permit for a period of twelve (12) months from the date of revocation; when a permittee has a permit revoked a second time, the permittee shall not be eligible to re-apply and no permittee on the subject property may receive a permit if the revoked permittee remains a resident of that land.
 - (2) Within 14 days, all chickens shall be removed from the premises.
 - (3) Any premises not in compliance shall be subject to the violations and penalties specified herein.
 - (4) The Owner and Permittee shall be jointly and severally liable to the Borough for all costs incurred to remove, place, and/or dispose of animals, and for the costs of all fees, violations, and penalties hereunder.
- (f) Duration of permit.-- A permit shall be valid for a three (3) year period of time from January 1 of the year in which the permit is issued. Fees shall not be pro-rated.
- (h) Renewal of permit--
- (1) If
 - (i) there are no existing unresolved violations on record for the permittee at the time of renewal;
 - (ii) there are no unpaid fees or costs under this Chapter at the time of renewal; and

(iii) the permit is not suspended or revoked at the time of renewal,
The permit shall be renewed when the renewal fee is paid and the renewal application is submitted.

(2) Renewal applications shall contain all of the statements and provide the same proof required by the original application and shall be submitted by November 15 of the final year of the permit term.

§XXX-7. Standards and Conditions.

(a) General rule.--Chickens shall be permitted in residential zones when in compliance with the provisions of this Chapter.

(b) Non-commercial use.--The keeping of chickens under this ordinance shall not be for commercial purposes. A permittee may not engage in commercial:

- (1) chicken breeding;
- (2) sale of chickens;
- (3) egg producing; or
- (4) fertilizer production.

(c) Type.--

- (1) Chickens must be hens.
- (2) Roosters may not be kept in residential areas.

(d) Coops.-- Chicken coops are required.

- (1) Chicken coops shall:
 - (i) Have a solid roof.
 - (ii) Be solid on all sides.
 - (iii) Have adequate ventilation.
 - (iv) Provide protection from predators.
 - (v) Be designed to secure the chickens.
 - (vi) Be readily accessible for cleaning.

(2) Coops may be either:

- (i) commercially built/designed; or
- (ii) built by the owner or permittee.

(3) Coops must provide three (3) square feet of floor space and nine (9) cubic feet of total enclosed space per chicken.

(4) The exterior of coops must be clean and made of wood or similar material; the coop material shall be painted or stained and maintained in good condition.

(e) Pens.-- Pens are required.

(1) Pens shall permit at least nine (9) square feet of area per chicken.

(2) The pen must be constructed in a way to prevent chickens from roaming free and keep predators from getting into the pen.

(3) The pen must be accessible by the hens from their coop when they are not secured in the coop.

(4) The pen must have a top sufficient to prevent predators from getting into the pen.

(f) Location.--

(1) Pens and coops shall be located in the back or side yard only and at least 25 feet from any street.

(2) No part of a pen or coop shall be closer than 25 feet from an property line or neighboring residence.

(3) The Pen and Coop must not be within or connected to the residence.

(4) Where reasonably practicable, Pens and Coops shall be situated on a property to provide maximum screening from adjacent properties and roadways.

(g) Living conditions.--

(1) Chickens shall have access to feed and clean water at all times.

(2) Feed shall be secured to prevent rodents or other pests from accessing the feed.

(3) Chickens shall have adequate bedding of at least a 3-inch base of dry litter such as pine shavings.

(4) Bedding shall be added weekly and removed and replaced at least monthly, and whenever wet.

(5) Pens and coops shall be cleaned at regular intervals and whenever odor can be detected 20 feet from any part of the pen or coop.

(6) A veterinarian shall be identified by the permittee and used for any necessary medical care.

(7) Chickens shall be banded with band(s) of color(s) approved by the permit officer; band color(s) shall be unique to the applicant.

(h) Disposition of deceased chickens.--Chicken carcasses shall be disposed of in compliance with 3 PA Cons Stat

§ 2352 (2014). No person shall slaughter a chicken in a residential zone.

§XXX-8. Disposal of waste material.

- (a) All waste shall be disposed of in a proper manner as follows:
 - (1) Appropriate waste disposal may be any of the following:
 - (I) Waste is to be double bagged and placed into municipal waste;
 - (ii) Owner or Permittee may compost the waste; or
 - (iii) Permittee may give the waste to another person who composts.
 - (2) When waste is composted, the permittee shall notify any person given the waste that it contains chicken excrement, or notify any person given compost that the compost was made from chicken waste.
 - (3) Non-composted waste shall not be spread on lawns, in gardens, or on the ground.
- (b) Waste may not be disposed of by any other manner, including dumping or washing away.

§XXX-9. Nuisances.

- (a) General rule.--A nuisance may be either:
 - (1) a health hazard; or
 - (2) activity that unreasonably interferes with the use or enjoyment of neighboring property.
 - (3) For the purposes of this Chapter, it shall be a nuisance if a permittee's chicken keeping results in odors detectable on adjacent properties or roadways, or in any noise greater than, or with more frequency than, noises reasonably expected to be encountered in the subject permittee neighborhood.
 - (4) For the purposes of this Chapter, it shall be a nuisance if a permittee's chicken enters a neighboring property or roadway.
- (b) It shall be a violation of this Chapter for an owner and permittee to fail to abate a nuisance within ten (10) days of the issuance of a notice from the permit officer.

ARTICLE III
Violations, Penalties and Costs

§XXX-10. Compliance.

Failure to comply with any provision of this chapter, and/or failure to comply with an order to abate an activity, use and/or condition, shall be a violation of this chapter and subject to criminal prosecution and the revocation of a license.

§XXX-11. Fine.

Any person who has violated or permitted the violation of any provisions of this chapter shall upon judgment thereof by any Magisterial District Judge be sentenced to pay a fine of not more than one thousand dollars (\$1,000.00) per day of violation, together with the costs of suit including reasonable attorney fees. Each day of violation shall constitute a separate offense, for which a summary conviction may be sought. All judgments, administrative, enforcement, security firm or police response, and other costs, interest, and reasonable attorney fees collected for the violation of this chapter, shall be paid over to the Borough.

§XXX-23. Other Remedies.

The Court of Common Pleas, upon petition, may grant an order of stay, upon cause shown, tolling the per diem fine pending a final adjudication of the violation and judgment. The Borough shall also have the right to seek injunctive relief for violations of this chapter.

§XXX-24. Permit Revocation.

If permittee commits two (2) or more offenses resulting in convictions within one year, the permit may be revoked.

ARTICLE IV
Miscellaneous Provisions

§XXX-25. Repealer.

All Ordinances or parts of Ordinances which are inconsistent herewith are hereby repealed.

§XXX-26. Severability.

If any sentence, clause, section, or part of this Ordinance is for any reason found to be unconstitutional, illegal or invalid, such unconstitutionality, illegality or invalidity shall not affect or impair any of the remaining provisions, sentences, clauses, sections or parts of this Ordinance. It is hereby declared as the intent of the Borough Council that this Ordinance would have been adopted had such unconstitutional, illegal or invalid sentence, clause, section or part thereof not been included herein.

§XXX-27. Interpretation.

The object of interpretation and construction of this Ordinance and/or the provisions thereof shall be, if possible, to give effect to all of its provisions. Whenever a provision in this Ordinance shall be in conflict with another provision in the same section or another part of this Ordinance or another Ordinance or part thereof, the two (2) shall be construed, if possible, so that the effect may be given to both.

§XXX-28. Effective Date.

This Ordinance shall become effective upon adoption.

**BOROUGH MOUNT POCONO
CONTROL OF SHOPPING CARTS ORDINANCE**

ORDINANCE NO. ____ OF 20__

**AN ORDINANCE REGULATING THE CONTROL OF SHOPPING CARTS
TO BE KNOWN AS CHAPTER 163 OF THE MOUNT POCONO BOROUGH CODE**

SECTION 1. PURPOSE.

- A. Abandoned shopping carts constitute a nuisance, create potential hazards to the health and safety of the public, and interfere with pedestrian and vehicular traffic within the Borough of Mount Pocono. Wrecked, dismantled and/or abandoned shopping carts on public or private property create conditions that reduce property values and promote blight and deterioration within the Borough's neighborhoods.
- B. The purpose of this chapter is to make the removal of shopping carts from the premises of a business establishment a violation of the code. In addition, this chapter ensures the storeowners will take action to reduce the removal of shopping carts from a business establishment's premises. This chapter requires business establishment owners to facilitate the retrieval of those shopping carts removed from the establishment's premises.

SECTION 2. DEFINITIONS.

- A. CART: Shall mean a basket, which is mounted on wheels or a similar device, provided by a business establishment for use by a customer for the transporting of goods of any kind.
- B. OWNER: Shall mean any person or entity, which in connection with the conduct of a business, owns, possesses, or makes one or more carts available to customers of to the public. For purposes of this Chapter, owner shall also include the owner's on-site or designated agent that provides the carts for use by its customers.
- C. PREMISES: Premises shall mean the entire area owned and utilized by the business establishment that provides carts for use by customers, including any parking lot or other property provided by the owner for customer parking.
- D. ABANDONED CART: Abandoned cart shall mean any cart that has been removed without written permission of the owner, agent or on-duty manger from the premises of the business establishment, regardless of whether it has been left on either private or public property.

SECTION 3. ENFORCEMENT

The Zoning/ Code Enforcement Officer shall oversee the implementation, administration and enforcement of the Ordinance.

**SECTION 4. PROHIBITION AGAINST REMOVAL OR POSSESSION OF
ABANDONED CART.**

- A. It shall be unlawful to either temporarily or permanently remove a cart from the premises, of a business establishment without the express prior written approval of the owner or on-duty manager of the business establishment.
- B. This section shall not apply to carts that are removed for repair of maintenance.

SECTION 5. MANDATORY SIGN REQUIREMENTS ON CARTS AND PREMISES.

Within ninety (90) days of the effective date of this Chapter, owners of one or more carts shall place identification signs on carts and signage on premises as follows:

- A. Signs shall be affixed to carts or placed in pertinent places near doors to warn customers that cart removal is prohibited and constitutes a violation of state and local law.

SECTION 6. IMPOUNDMENT OF ABANDONED CARTS.

The Zoning / Code Enforcement Officer or other designated Borough employee shall have the authority to retrieve and impound carts located outside the premises of a business establishment as follows:

- A. The Zoning / Codes Enforcement Officer or other designated employee shall have the authority to immediately retrieve and impound a cart. Owner will be notified of impoundment via USPS certified mail / return receipt requested and regular first-class mail. Notice will include date, time and location of violation along with photographic evidence. If the owner reclaims the cart within three (3) business days following notice of the impoundment, the cart shall be released to the owner at no charge whatsoever.

SECTION 7. COSTS AND FINES FOR IMPOUNDED CARTS.

The owner of any cart impounded by the Borough pursuant to Section 6 shall be liable for the Borough's actual costs of retrieval and storage, as the Borough Council may adopt by resolution from time to time relating to enforcement of this Ordinance. In addition, the Borough may fine the owner of an impounded cart as per fee schedule.

SECTION 8. DISPOSITION OF CARTS AFTER THIRTY (30) DAYS.

Any cart not reclaimed from the Borough within thirty (30) days after notification to the owner and any unmarked cart shall be sold or otherwise disposed of by the Borough.

SECTION 9. SEVERABILITY AND VALIDITY.

If any section, subsection, paragraph, or sentence of the Ordinance, or any part thereof, is for any reason found to be unconstitutional, invalid or beyond the authority of the Mount Pocono Borough by a court of competent jurisdiction, such decision shall not affect the validity or effectiveness of the remaining portions of this Ordinance.

The following Code does not display images or complicated formatting. Codes should be viewed online. This tool is only meant for editing.

§ 10-102 Nuisances Declared Illegal and Prohibited.

[Ord. 2000-7, 5/1/2000, § 2]

1. Nuisances, including, but not limited to, the following are hereby declared to be illegal and are prohibited:
 - A. Storing or accumulating the following:
 - (1) Garbage or rubbish.
 - (2) Junk material, including, but not limited to, unused or abandoned machinery, equipment or appliances, and all forms of waste and refuse of any type of materials, including scrap metal, glass, industrial waste and other salvageable materials, unless such items are held for resale, in a manner such that they cannot be seen from any public highway, road, street, avenue, lane or alley, stream, or public property, which is maintained by the Township, or by the Commonwealth of Pennsylvania.
 - B. Storing or accumulating abandoned or junked motor vehicles that can be seen from any public highway, road, street avenue, lane or alley, stream, or public property, which is maintained by the Township, or by the Commonwealth of Pennsylvania. All such vehicles must be moved within 30 days, or, if at vehicle repair businesses, within 60 days.
 - C. Storing or accumulating more than three antique or collector motor vehicles for restoration which are neither sheltered by a building nor enclosed behind an evergreen or solid fence as permitted by applicable zoning ordinances; or storing or accumulating in an unordered fashion three or less antique or collector motor vehicles for registration.
 - D. Draining or flowing, or allowing to drain or flow, by pipe or other channel, whether natural or artificial, any foul or offensive water or drainage from sinks, bathtubs, wash stands, lavatories, water closets, swimming pools, privies, or cesspools of any kind or nature whatsoever, or any foul or offensive water, or foul or offensive drainage of any kind from property along any public highway, road, street, avenue, lane or alley, or from any property into or upon any adjoining property.
 - E. Draining or flowing, or allowing to drain or flow, any water or drainage from within dwellings situate upon property along any public highway, road, street, avenue, lane or alley in the Township, into or upon the cartway or traveled portion for said drainage by means of a drainage ditch or otherwise.
 - F. Burning of tires or tar products.
 - G. Maintaining, or causing to be maintained, any dangerous structure, including, but not limited to, abandoned or unoccupied buildings or parts of buildings in a state of dilapidation or disrepair.
 - H. Permitting the growth of any grass, weeds, noxious weeds, or any vegetation whatsoever, not edible or planted for some useful, legal or ornamental purpose, to conceal any rubbish, garbage, trash or any other violation of this Part.
 - I. Permitting or allowing any well, cistern, or open pit to be or remain uncovered.
 - J. Pushing, shoveling, or otherwise depositing snow upon the cartway or traveled portion of any public highway, road or street which is maintained by the Township or by the Commonwealth of Pennsylvania, and allowing same to remain thereon.

- K. Allowing or permitting any excavation, material excavated, or obstruction, on or adjoining any highway, street, or road to remain opened or exposed, without the same being secured by a barricade, temporary fence, or other protective materials.
- L. The uncontrolled use of shopping carts, including but not limited to the following:
 - (1) Failure on the part of a store owner offering the use of shopping carts as part of customer service to retrieve shopping carts that have been taken off-site within 24 hours of being alerted to the presence of the off-site shopping cart.
 - (2) Failure on the part of a store owner offering the use of shopping carts as a part of customer service to corral shopping carts at a frequency sufficient to prevent the carts being taken off-site.
 - (3) Failure on the part of a store owner offering the use of shopping carts as a part of customer service to corral shopping carts at a frequency sufficient to prevent a limitation in available parking or a decrease in safe internal traffic circulation.
 - (4) Removal of a shopping cart from the premises of any store without the expressed written consent of the cart owner.
 - (5) Failure of any real private property owner to return a shopping cart left on that owner's property or failure to contact the owner of the shopping cart and make the owner aware that a shopping cart has been taken off-site.
- M. Failing to remove snow from any sidewalk, right-of-way, driveway, parking lot open to public use within 24 hours of the end of the most recent snowfall.
- N. Failure on the part of the owner, custodian or keeper of any dog to curb constant barking of any such dog.
- O. Allowing a dog to run at large at any time, either upon any of the streets, roads, alleys or public grounds in the Township, or upon the property of another than the owner, custodian or keeper of such dog, unless accompanied by and under the immediate control of such owner, custodian or keeper.
- P. Storing or accumulating tires or other material suitable as breeding habitat for mosquitoes outside for more than three days between the months of March and October and for more than one week during any other time of the year.
- Q. Discharging stormwater or redirecting stormwater in a manner where flooding, excessive wetness, erosion, or other damage occurs to an adjacent property without that property owner's expressed written approval.
- R. Causing any noise not in compliance with the performance standards addressing noise in the Stroud Township Zoning Ordinance [Chapter 27].
- S. Causing any vibration not in compliance with the performance standards addressing noise in the Stroud Township Zoning Ordinance [Chapter 27].
- T. Causing glare not in compliance with the performance standards addressing glare in the Stroud Township Zoning Ordinance [Chapter 27] or directing any exterior light in a manner that it shines onto an adjacent property or into an adjacent building without the expressed written permission of the adjacent property owner.
- U. Allowing trash dumpsters or waste containers to overflow or to be kept or maintained without lids so as to prevent accidental fire or malicious mischief.