

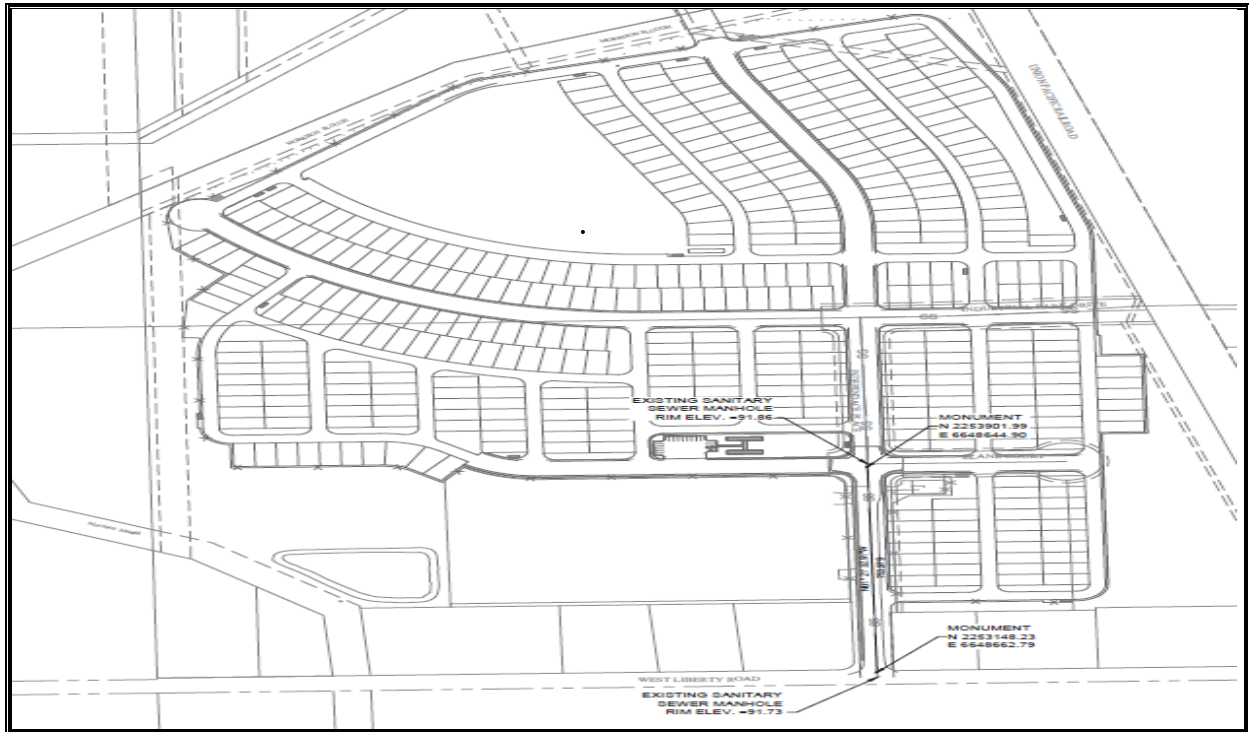


Cal OES
GOVERNOR'S OFFICE
OF EMERGENCY SERVICES



FEMA

Temporary Housing Community:
Gridley Industrial Park
Gridley, California 95948



Approximately 400 Manufactured Housing Units (MHUs)

Numerous published reports name California's Camp Fire as the world's most costly catastrophe in 2018. An estimated 25 percent of the structures lost were not insured.

Your neighbors need your help.

The California Office of Emergency Services (CalOES), Butte County, City of Gridley and FEMA are establishing a **temporary** housing community in Gridley Industrial Park to help Camp Fire survivors as they rebuild their homes. Gridley was selected because the location allows survivors to stay close to the homes they lost.

Gridley is one of several temporary housing communities FEMA is collaborating with its partners to build.

Site Overview:

- Location: 1221 Independence Place (72 acres)
- Housing Units: 400 manufactured housing units (MHUs)
- Duration: Anticipated lease duration is 12 months, but each lease is reviewed on a monthly basis.

Site Approval:

According to the [Town of Gridley's website](#), Gridley Industrial Park is state-owned and zoned for government use. FEMA, a federal government agency, owns, operates and demobilizes Temporary Housing Communities.

Temporary Housing Communities:

- FEMA temporary housing communities are enclosed. Each community has established neighborhood rules and requirements, like most neighborhoods.
- All FEMA temporary housing units are new; none have been used in previous disasters.
- Temporary Housing Communities are constructed and demobilized by FEMA.

Benefits:

Community

- Retain residents.

Business

- Keeps the buying power of Camp Fire survivors within Butte County, thereby assisting in economic recovery.

Individuals

- The opportunity to help your neighbors recover sooner.

For additional information, go to:

<https://buttecountyrecovers.org/fema-group-site-information/>