



Cal OES
GOVERNOR'S OFFICE
OF EMERGENCY SERVICES



COMMUNITY HEALTH AND SAFETY PLAN

State Hazard Tree Removal Program (DRR19055)
Butte County, California

August 2020

Prepared by:
CalRecycle Health & Safety Branch
1001 I Street
Sacramento, CA

For:
Butte County Residents

Introduction

On November 8, 2018, the Acting Governor of California, Gavin Newsom, declared a State of Emergency for Butte County, due to the Camp Fire Incident. The Camp Fire destroyed the Town of Paradise and burned 153,336 acres in Butte County.

The Department of Resources Recycling and Recovery (CalRecycle) was tasked by the California Governor's Office of Emergency Services (Cal OES) to manage a coordinated hazard tree removal project for trees damaged by the Camp Fire. CalRecycle intends to perform this work in an expedited manner in full compliance with Cal OES and Federal Emergency Management Agency (FEMA) project requirements, while protecting public health and safety and the environment.

Beginning in the summer of 2020, CalRecycle and licensed environmental contractors will begin the evaluation process to coordinate with county, state, and federal agencies to mark trees for removal, processing, and disposal. Services may include support services in other Northern California counties.

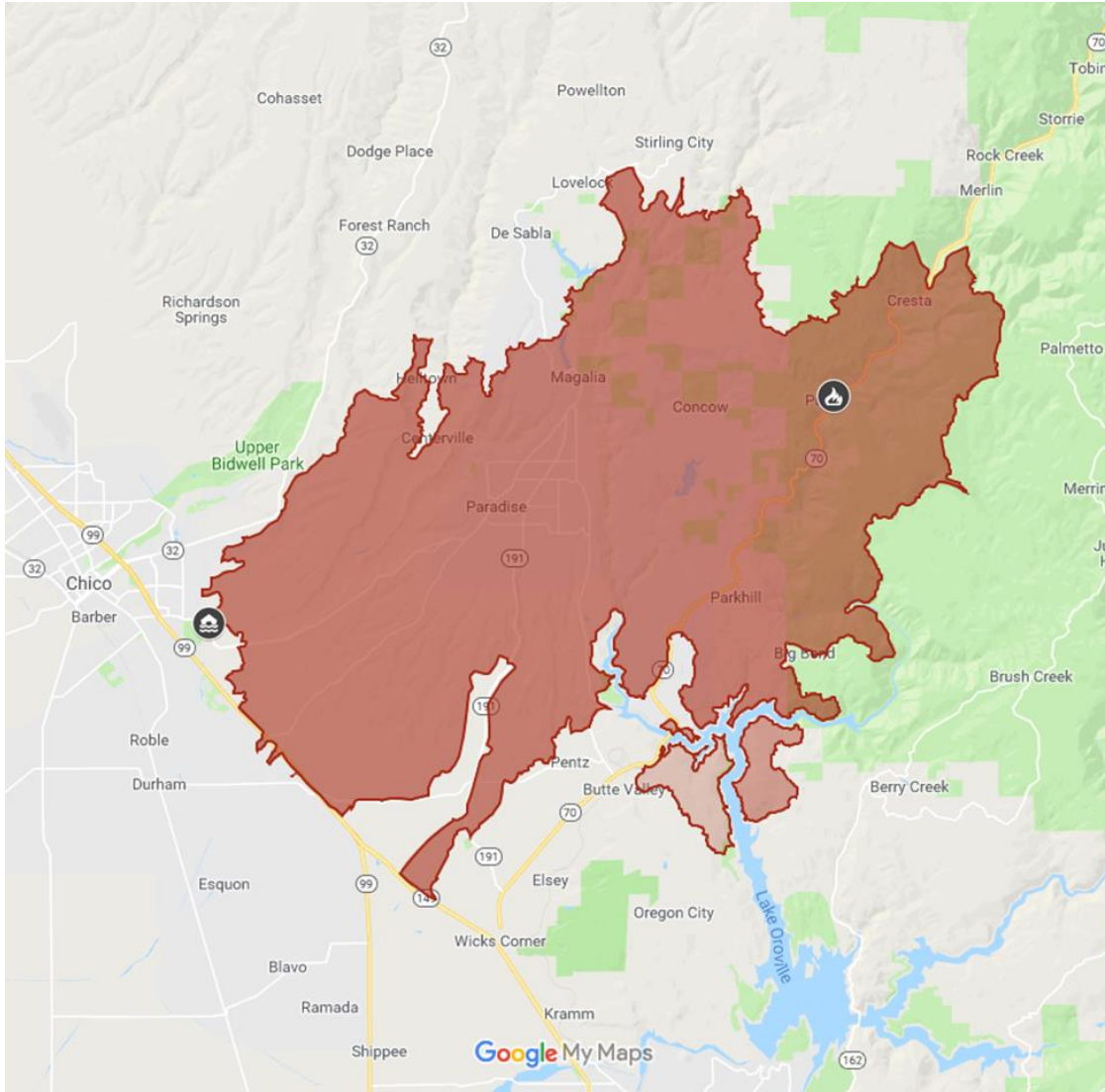
The intent of this plan is to inform the surrounding community about the work the environmental consultants and tree crews will be performing in the area, and what the community should know to protect their own health and safety throughout this process.

Background Information

The Camp Fire began on November 8, 2018. Over the course of 17 days, the fire burned more than 150,000 acres in Butte County. Trees identified as a hazard to the roadway or the right-of-way will be removed throughout the burn scar.

A map of the burned area from the Camp Fire is shown in Figure 1.

Figure 1. Camp Fire burn area.



Potential Health and Safety Concerns to Community

It is important to keep in mind that the hazards listed here are precautionary in nature. CalRecycle recommends safe work practices, as outlined below, to minimize exposure to the public and those workers involved in the tree removal project.

DUST

Dust and ash may contain concentrated levels of toxic metals, asbestos, and other harmful materials. While it is unlikely that the dust from the tree removal project will contain harmful materials, air monitoring stations will be set up around sensitive areas, such as schools and medical facilities, to verify that there is no community exposure to metals, asbestos, or other harmful materials.

Proper dust control can minimize exposure to nuisance dust. The primary control measure used is watering the ground to prevent dust from becoming airborne. A water truck will be on site to spray water over dusty material. In order to reduce runoff, crews will use only as much water as is necessary for dust suppression.

Limited access

While trees are being removed it is important for members of the public to stay away. Tree cutting is an inherently dangerous job, and members of the public should maintain a safe distance from active worksites. You may not see work being performed or hear directions due to loud noise. Please maintain situational awareness at all times and follow the directions of flaggers on roadways.

PHYSICAL HAZARDS

Heavy Equipment and Traffic

Increased vehicle traffic, including logging trucks, heavy equipment, pickup trucks and automobiles are anticipated near each work zone. Construction equipment working within the work zones will maintain a speed of 15 miles per hour or less. Trucks will travel from the tree removal area to a main thoroughfare and follow established truck routes to the highway and final destination. Loaded vehicles are heavy and require more room to stop. There will be cones, signs, and flaggers to guide street traffic. Pay attention and slow down around workers. There may be traffic delays on the affected roadways, so plan trips accordingly.

It is important to keep in mind that many of these larger vehicles have a limited field of vision, meaning that there are wide blind spots around the vehicle where the operator cannot see. For this reason, individuals should stand clear of all vehicles and avoid entering the work zone. If for any reason you need to enter the work zone, you should wait outside the work zone until you have made eye contact with a site representative in safety attire. A site representative will exit the work zone and discuss the safest approach with you.

Overhead Hazards

If you are near an area where trees are being removed, be aware of the work that is happening above you. Areas beneath overhead work will be marked off with caution tape, barricades, and/or signs that will alert you to the potential for falling objects. **Stay out of the area of active work.** Pay attention to signs and flaggers instructing you where to go.

Slips, Trips, and Falls

Tree removal creates debris such as branches and needles. While crews will remove this material, active work sites may contain slip, trip, and fall hazards. To avoid injury, watch where you step, and only walk in areas that are clear of debris. There could be holes in the ground, or roots of fallen trees that could cause you to stumble.

Address Signs

There will be an address sign in front of all residences that have an approved Right-of-Entry permit to allow removal of the trees.

Address sign example (not to scale):



Tree Removal Operations Center

A Tree Removal Operations Center (TROC) has been established for managing operations; however, it is closed to the public while the state is under COVID-19 restrictions. The community can contact staff for the State Hazard Tree Removal Program Monday through Friday, 8:00 am to 5:00 pm, at the following telephone numbers:

(530)-767-7011

(530)-767-7012


Approvals

Prepared by:



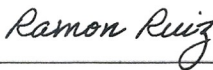
Lisa Garner, ASP, CSHM, Associate Safety Engineer

Peer reviewed by:



Marianne Chigbrow, Environmental Scientist

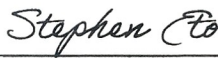
Approved by:



Ramon Ruiz, Planning Chief

08/04/2020

Date



Stephen Eto, Operations Section Chief

4Aug2020

Date



Bruce Berger, Operations Section Chief

08/06/2020

Date

Vince Paul

Vince Paul, Senior Safety Engineer

08/04/2020

Date