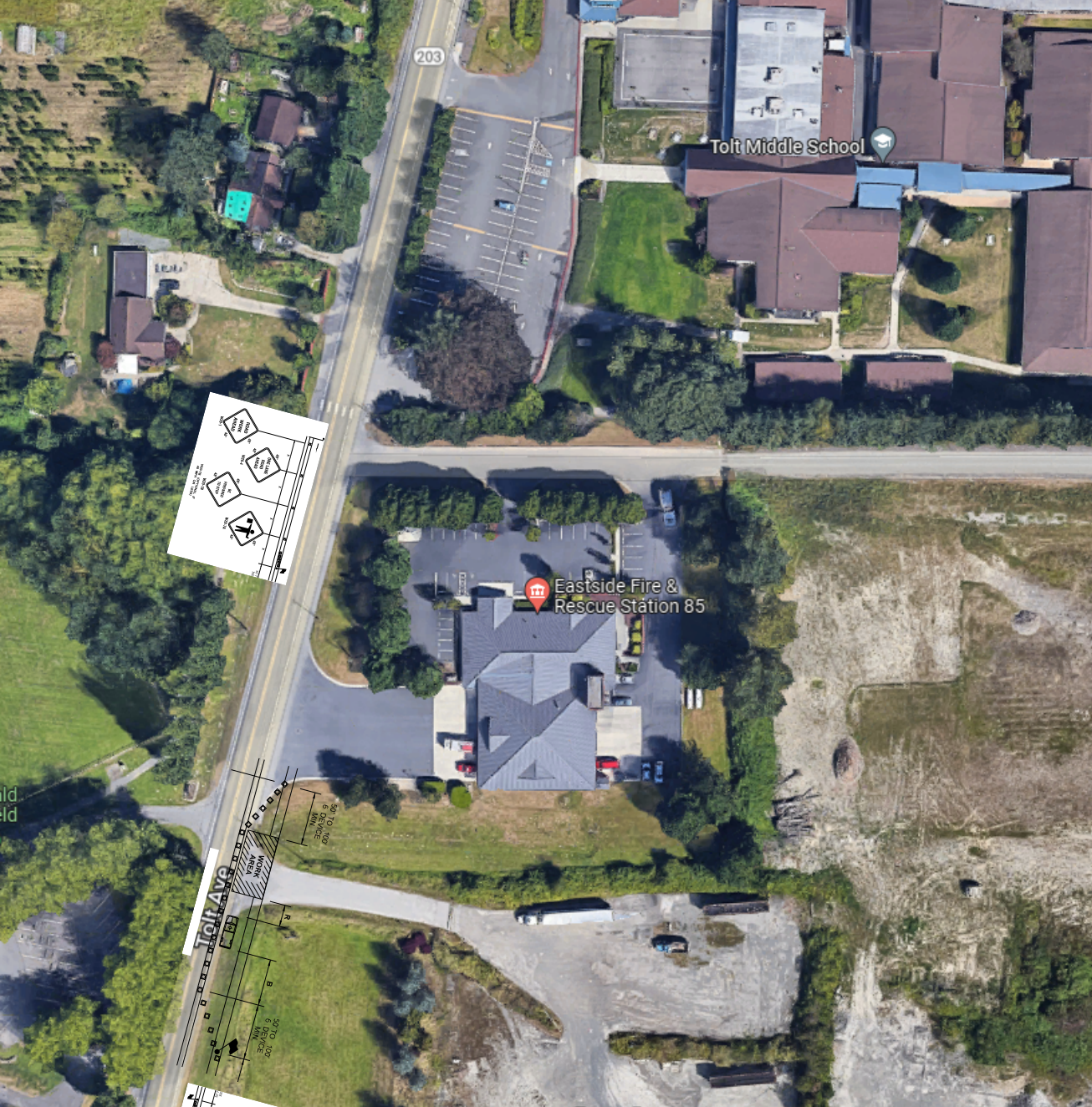




Flagger Station  
South of Fire Station  
to make sure there is  
access in and out at  
all times

Traffic Control Plans for Watermain North of Fire Station.

- 2/3 - 2/15 - Watermain Install and connection
- 3/9 - Traffic control for removal of Gate Valve on old watermain.



Traffic control plan for 12" DI along frontage tie in.

2/20 - 2/22 - Start Installation of Watermain from outside of roadway to existing.

2/27 - Finish Installation of Watermain from outside of roadway to existing.

3/9 - Shut Down and Connect to new watermain.



Traffic control plan for 12" DI along frontage tie in southern location.

- 2/20 - 2/22 - Start Installation of Watermain from outside of roadway to existing.
- 2/27 - Finish Installation of watermain from outside of roadway to existing.
- 3/9 - Shut Down and connect to new watermain.