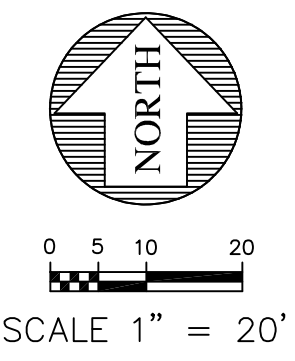
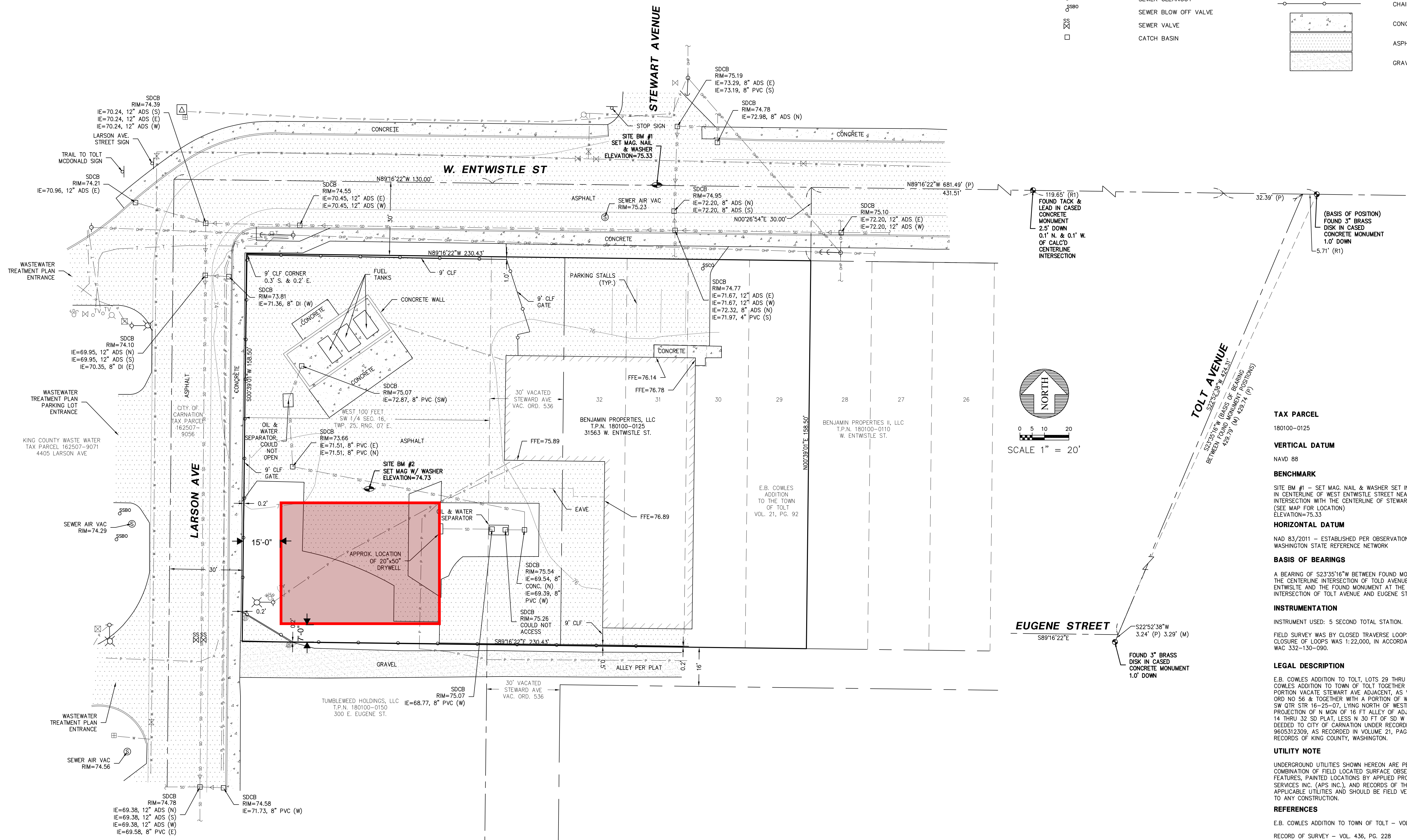


PAUL GERACI

A PORTION OF THE SW 1/4 OF THE SE 1/4 OF SEC. 16, TWP. 25 N., RNG. 7 E., W.M.
KING COUNTY, STATE OF WASHINGTON

LEGEND

- FOUND MONUMENT IN CASE
- BENCHMARK
- E.B. COWLES ADDITION TO TOWN OF TOLT VOL. 21, PG. 92
- ROS VOL. 436, PG. 228
- MEASURED
- WATER VALVE
- FIRE HYDRANT
- WATER METER
- FIRE DEPARTMENT CONNECTION
- WATER HOSE BIB
- SEWER MANHOLE
- SEWER CLEANOUT
- SEWER BLOW OFF VALVE
- SEWER VALVE
- CATCH BASIN
- BOLLARD
- POWER TRANSFORMER
- LIGHT POLE
- TELEPHONE RISER
- CABLE TV RISER
- SIGN POST
- UTILITY POLE
- GUY ANCHOR
- OVERHEAD POWER LINE
- OVERHEAD POWER LINE
- UNDERGROUND COMMUNICATION LINE
- WATER LINE
- STORM LINE
- CHAIN LINK FENCE (CLF)
- CONCRETE
- ASPHALT
- GRAVEL



TOLT AVENUE
S23°35'16"W (BASIS OF BEARING)
329.32' (P) 424.31'
S23°35'16"W (BASIS OF BEARING)
429.79' (M) 429.74' (P)

EUGENE STREET
S89°16'22"E
3.24' (P) 3.29' (M)

TAX PARCEL
180100-0125

VERTICAL DATUM
NAVD 88

BENCHMARK
SITE BM #1 - SET MAG. NAIL & WASHER SET IN ASPHALT IN CENTERLINE OF WEST ENTWISTLE STREET NEAR THE INTERSECTION WITH THE CENTERLINE OF STEWART AVENUE (SEE MAP FOR LOCATION) ELEVATION=75.33

HORIZONTAL DATUM
NAD 83/2011 - ESTABLISHED PER OBSERVATION TO THE WASHINGTON STATE REFERENCE NETWORK

BASIS OF BEARINGS
A BEARING OF S23°35'16"W BETWEEN FOUND MONUMENT AT THE CENTERLINE INTERSECTION OF TOLT AVENUE WEST ENTWISTLE AND THE FOUND MONUMENT AT THE CENTERLINE INTERSECTION OF TOLT AVENUE AND EUGENE STREET.

INSTRUMENTATION
INSTRUMENT USED: 5 SECOND TOTAL STATION.

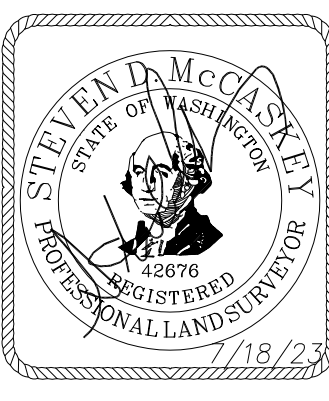
FIELD SURVEY WAS BY CLOSED TRAVERSE LOOPS, MINIMUM CLOSURE OF LOOPS WAS 1:22,000, IN ACCORDANCE WITH WAC 332-130-090.

LEGAL DESCRIPTION
E.B. COWLES ADDITION TO TOLT, LOTS 29 THRU 32, E.B. COWLES ADDITION TO TOWN OF TOLT TOGETHER WITH A PORTION VACATE STEWART AVE ADJACENT, AS VACATED BY ORD NO 56 & TOGETHER WITH A PORTION OF W 100 FT OF SW QTR STR 16-25-07, LYING NORTH OF WESTERLY PROJECTION OF N MGN OF 16 FT ALLEY OF ADJACENT LOTS 14 THRU 32 SD PLAT, LESS N 30 FT OF SD W 100 FT, AS DEEDED TO CITY OF CARNATION UNDER RECORDING NO. 9605312309, AS RECORDED IN VOLUME 21, PAGE 92, RECORDS OF KING COUNTY, WASHINGTON.

UTILITY NOTE
UNDERGROUND UTILITIES SHOWN HEREON ARE PER A COMBINATION OF FIELD LOCATED SURFACE OBSERVABLE FEATURES, PAINTED LOCATIONS BY APPLIED PROFESSIONAL SERVICES INC. (APSI INC.), AND RECORDS OF THE APPLICABLE UTILITIES AND SHOULD BE FIELD VERIFIED PRIOR TO ANY CONSTRUCTION.

REFERENCES
E.B. COWLES ADDITION TO TOWN OF TOLT - VOL. 21, PG. 92
RECORD OF SURVEY - VOL. 436, PG. 228

REVISIONS	
DESCRIPTION	DATE



TOPOGRAPHY SURVEY
FOR
PAUL GERACI

Encompass
ENGINEERING & SURVEYING

Western Washington Division
165 NE Juniper Street, Suite 700 • Everett, WA 98201 • Phone: (425) 392-0350
Eastern Washington Division
407 Southwater Blvd. • Clk Elum, WA 98922 • Phone: (509) 674-7433

JOB NO.	23575
DATE	7/18/2023
SCALE	1"=20'
DESIGNED	N/A
DRAWN	LGK
CHECKED	JLS
APPROVED	SOM
SHEET	1 OF 1