

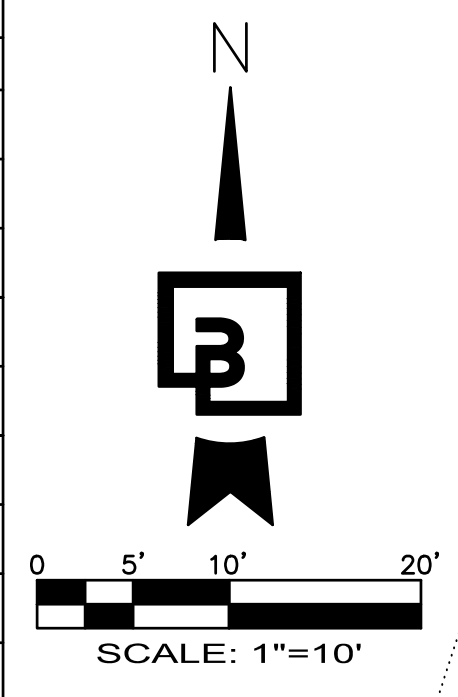
TOLT AVE INTERSECTION DETAIL  
FOR  
**PLAT OF TOLT RIVER TERRACE**  
A PORTION OF NE1/4, OF THE NW1/4 OF THE SE1/4 OF THE SW1/4 OF THE NE1/4 OF SEC. 21 TWP 25 N, RGE 7 E, WM  
CITY OF CARNATION, KING COUNTY, WASHINGTON

**CURB RAMP LOCATION DATA TABLE**

CURB_RAMP_#	STATION	OFFSET
43	10+24.50	30.57' LT
44	10+24.60	25.23' RT
45	111+16.61	16.55' RT
46	40+19.20	15.84' RT
47	40+30.00	15.71' LT
48	111+89.75	14.83' RT
49	112+01.81	24.37' RT
50	111+90.60	12.71' LT
51	103+17.79	13.00' RT
52	108+46.23	13.00' RT
53	106+14.69	8.50' RT
54	106+14.69	16.49' LT

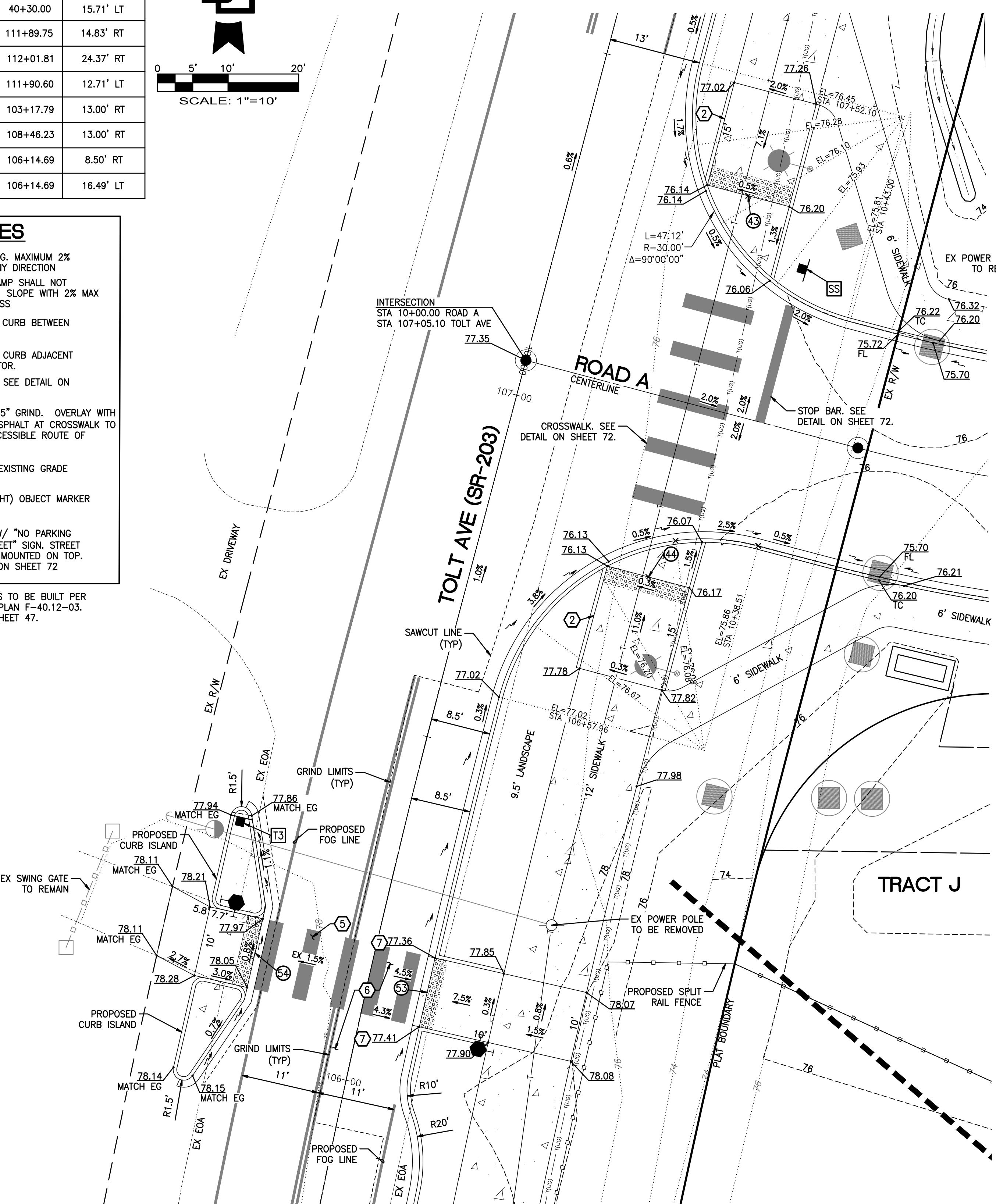
- KEYNOTES**
- ① 6'x5' LANDING, MAXIMUM 2% GRADE IN ANY DIRECTION
  - ② SIDEWALK RAMP SHALL NOT EXCEED 12:1 SLOPE WITH 2% MAX GRADE ACROSS
  - ③ 6" VERTICAL CURB BETWEEN ADA RAMPS
  - ④ 4" VERTICAL CURB ADJACENT TO ATTENUATOR.
  - ⑤ CROSSWALK. SEE DETAIL ON SHEET 72.
  - ⑥ LIMITS OF 1.5" GRIND. OVERLAY WITH UP TO 3" ASPHALT AT CROSSWALK TO PROVIDE ACCESSIBLE ROUTE OF TRAVEL.
  - ⑦ ADD 3" TO EXISTING GRADE
  - ⑬ TYPE 3 (RIGHT) OBJECT MARKER
  - SS STOP SIGN W/ "NO PARKING WITHIN 30 FEET" SIGN. STREET SIGN TO BE MOUNTED ON TOP. SEE DETAIL ON SHEET 72

NOTE: CURB RAMPS TO BE BUILT PER WSDOT STANDARD PLAN F-40.12-03. SEE DETAILS ON SHEET 47.

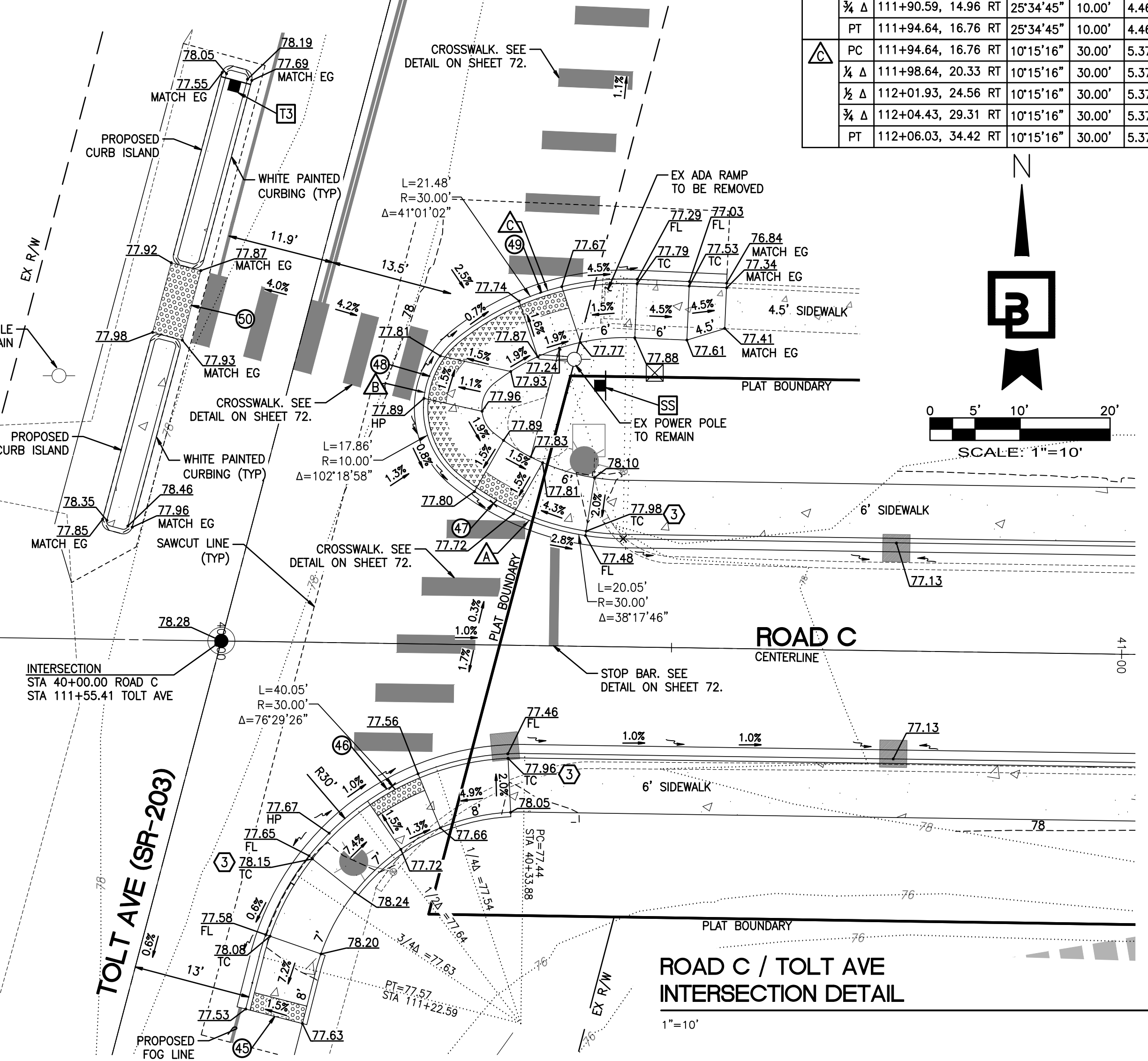


**CURB RETURN TABLE**

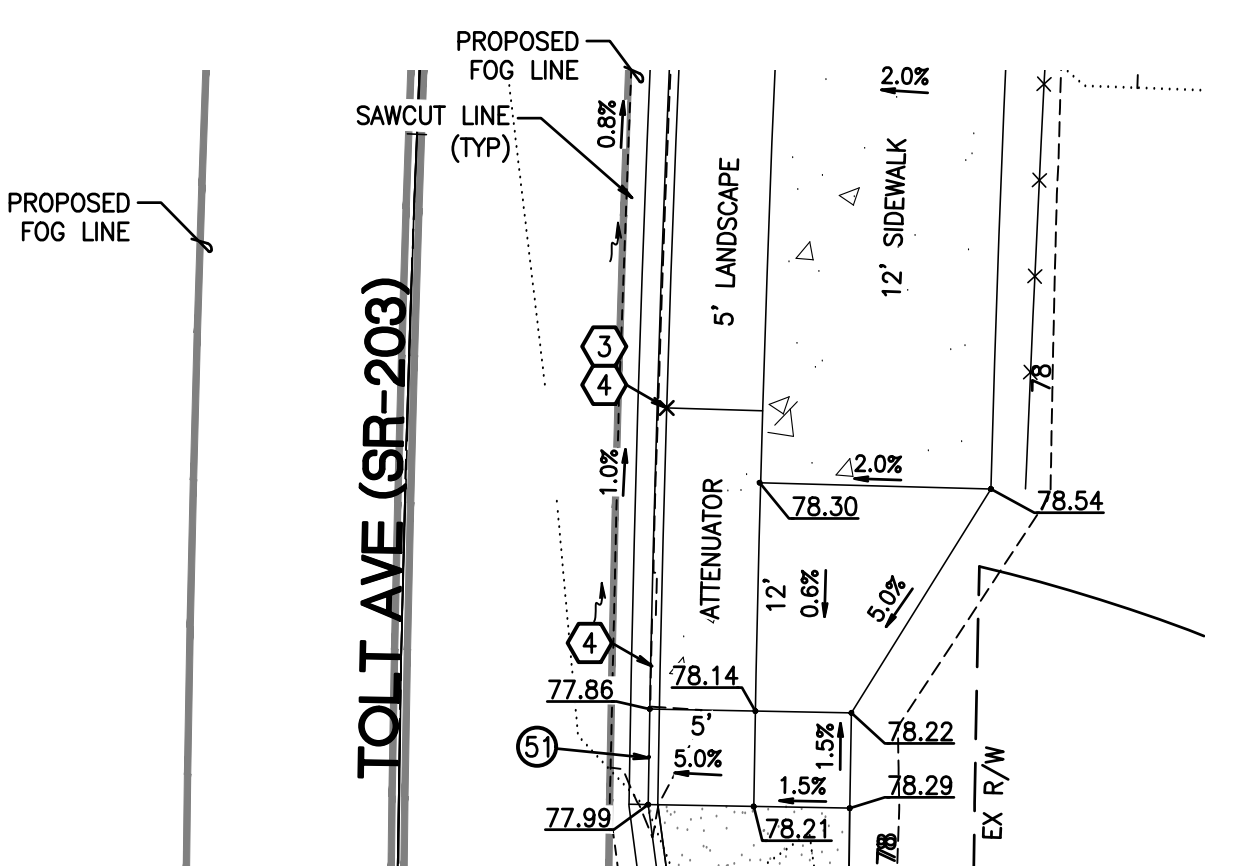
LOC	STA & OFF	DELTA	RADIUS	LEN	ELEV
△	PC 40+44.45, 12.00 LT	9'34"26"	30.00'	5.01'	77.33
△	¼ Δ 40+39.46, 12.42 LT	9'34"26"	30.00'	5.01'	77.50
△	½ Δ 40+34.61, 13.66 LT	9'34"26"	30.00'	5.01'	77.65
△	¾ Δ 40+30.03, 15.69 LT	9'34"26"	30.00'	5.01'	77.76
PT	40+25.86, 18.46 LT	9'34"26"	30.00'	5.01'	77.81
△	PC 111+79.56, 20.65 RT	25'34"45"	10.00'	4.46'	77.81
△	¼ Δ 111+82.23, 17.12 RT	25'34"45"	10.00'	4.46'	77.85
△	½ Δ 111+86.16, 15.09 RT	25'34"45"	10.00'	4.46'	77.88
△	¾ Δ 111+90.59, 14.96 RT	25'34"45"	10.00'	4.46'	77.84
PT	111+94.64, 16.76 RT	25'34"45"	10.00'	4.46'	77.79
△	PC 111+94.64, 16.76 RT	10'15"16"	30.00'	5.37'	77.79
△	¼ Δ 111+98.64, 20.33 RT	10'15"16"	30.00'	5.37'	77.76
△	½ Δ 112+01.93, 24.56 RT	10'15"16"	30.00'	5.37'	77.70
△	¾ Δ 112+04.43, 29.31 RT	10'15"16"	30.00'	5.37'	77.53
PT	112+06.03, 34.42 RT	10'15"16"	30.00'	5.37'	77.29



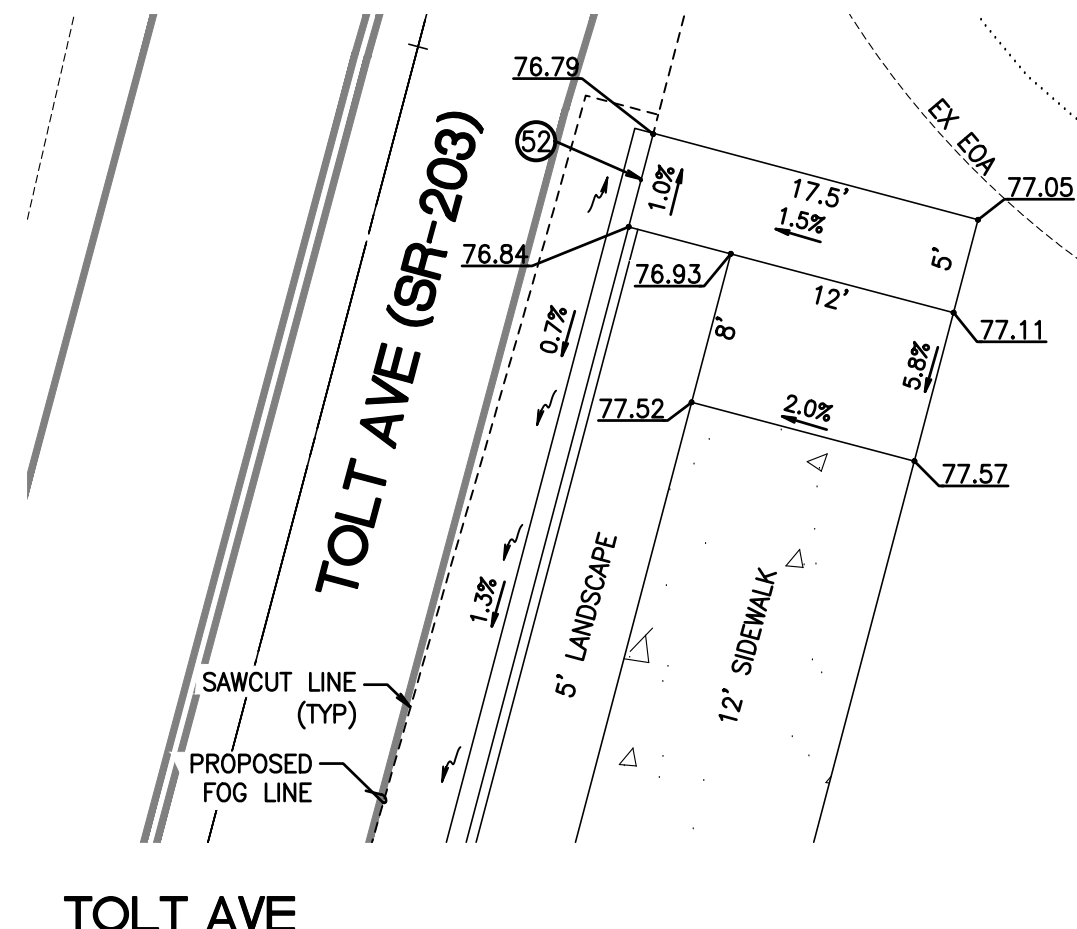
**ROAD A / TOLT AVE INTERSECTION DETAIL**  
1"=10'



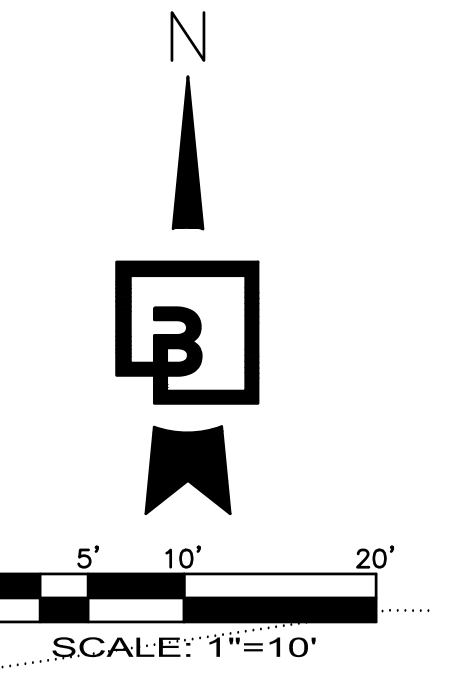
**ROAD C / TOLT AVE INTERSECTION DETAIL**  
1"=10'



**TOLT AVE RAMP DETAIL - SOUTH**  
1"=10'



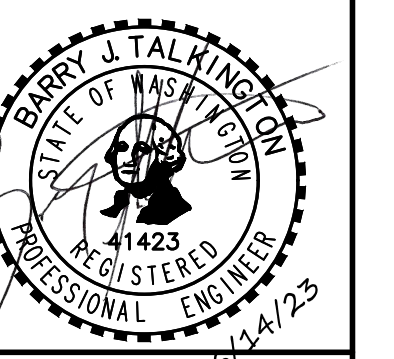
**TOLT AVE RAMP DETAIL - NORTH**  
1"=10'



RRFB PLANS  
24 4/28/23 TJS TJS BIT  
25 16/14/23 TJS TJS BIT  
No. Date By Ckd. Appr.  
Revision  
24 4/28/23 TJS TJS BIT  
25 16/14/23 TJS TJS BIT  
Civil DEFERRED FRONTAGE BRIDGE BP DATED 5/06/23

Title: **TOLT AVE INTERSECTION DETAIL**  
FOR  
**TOLT RIVER TERRACE**

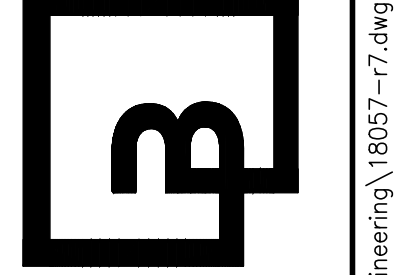
For: **MAINUVE WA LLC**  
**110 112TH AVE NE, SUITE 202**  
**BELLEVUE, WA 98004**



Scale:  
Horizontal 1" = 10'  
Vertical N/A

Designed RK  
Drawn RK  
Checked BIT  
Approved BIT  
Date 6/14/23

**Barghausen Consulting Engineers, Inc.**  
18215 72nd Avenue South  
Kent, WA 98032  
425.251.6222 [barghausen.com](http://barghausen.com)



Job Number **18057**  
Sheet **23** of **83**

**CALL BEFORE YOU DIG!**  
1-800-424-5555

P:\18000a\18057\engineering\18057-7.dwg 6/12/2023 4:12 PM TSKADA

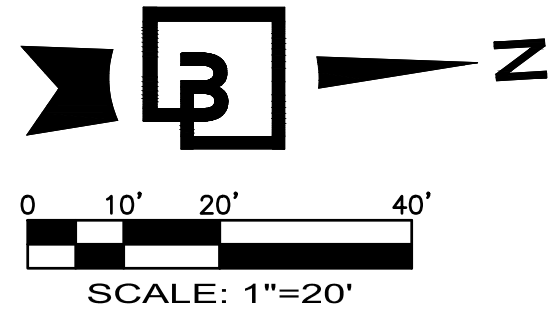


FRONTAGE DRAINAGE PLAN AND PROFILE - TOLT AVE

FOR

**PLAT OF TOLT RIVER TERRACE**

A PORTION OF NE1/4, OF THE NW1/4 OF THE SE1/4 OF THE SW1/4 OF THE NE1/4 OF SEC. 21 TWP 25 N, RGE 7 E, WM  
CITY OF CARNATION, KING COUNTY, WASHINGTON



**UTILITY CROSSINGS**

- △ STA 107+43.47, 35.50' RT  
IE 12" SD = 72.50  
T/P 12" W = 71.40
- △ STA 105+62.65, 37.99' RT  
IE 12" SD = 72.50  
T/P 12" W = 68.40
- △ STA 103+67.61, 32.23' RT  
IE 12" SD = 73.40  
T/P 12" W = 57.20

**KEYNOTES:**

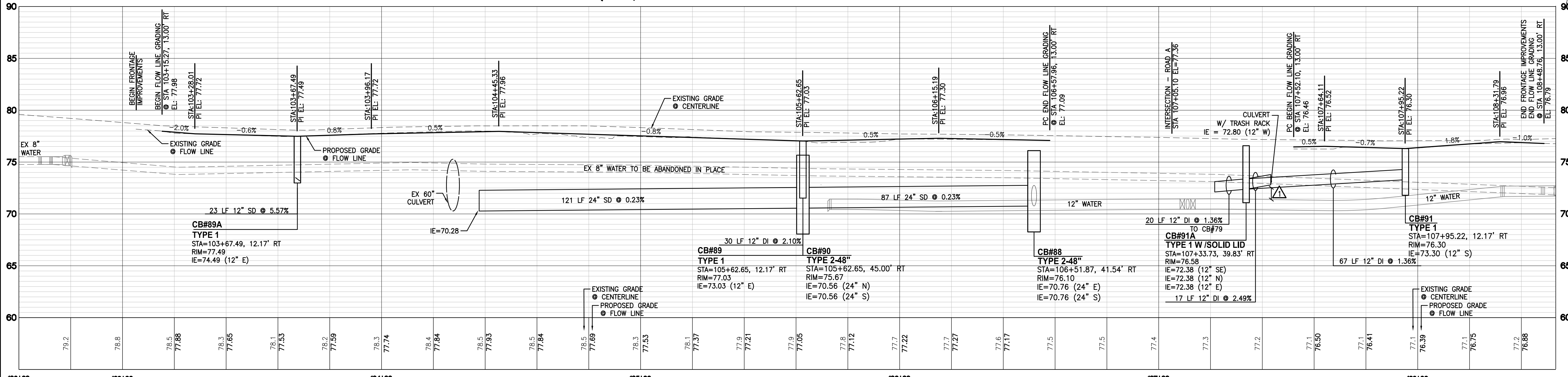
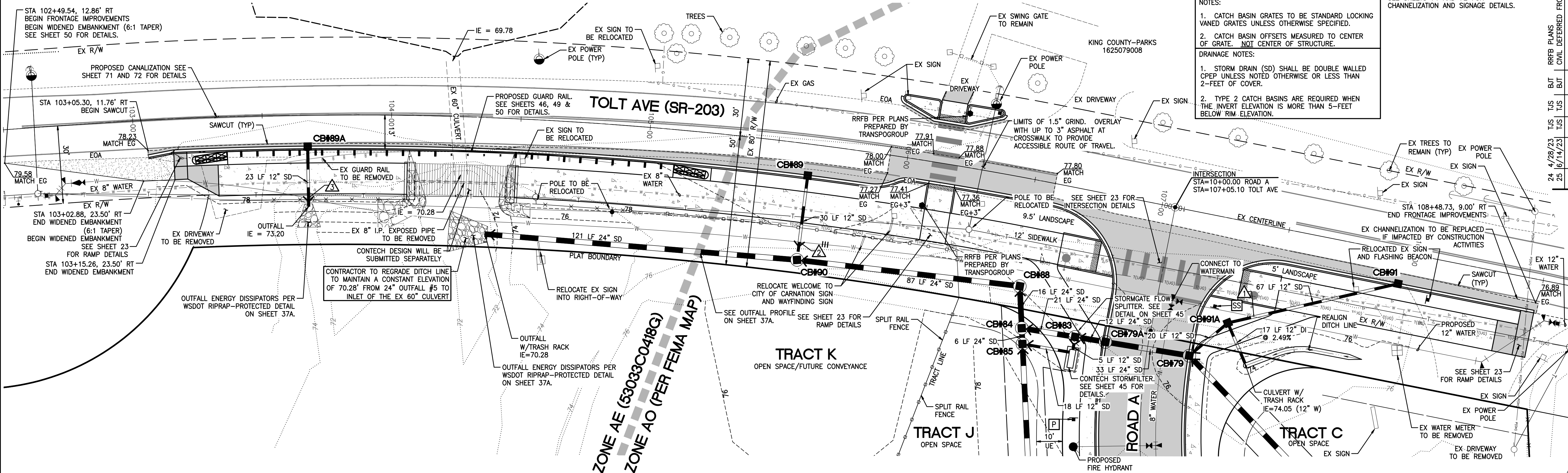
- [P] "NO PARKING - FIRE LANE" SIGN. DEVELOPER/CONTRACTOR TO INSTALL NO PARKING SIGNS
- [SS] STOP SIGN W/ "NO PARKING WITHIN 30 FEET" SIGN. STREET SIGN TO BE MOUNTED ON TOP. SEE DETAIL ON SHEET 72

**NOTE:**

SEE SHEETS 71 AND 72 FOR CHANNELIZATION AND SIGNAGE DETAILS.

**NOTES:**

1. CATCH BASIN GRATES TO BE STANDARD LOCKING VANED GRATES UNLESS OTHERWISE SPECIFIED.
  2. CATCH BASIN OFFSETS MEASURED TO CENTER OF GRATE. NOT CENTER OF STRUCTURE.
- DRAINAGE NOTES:**
1. STORM DRAIN (SD) SHALL BE DOUBLE WALLED CPEP UNLESS NOTED OTHERWISE OR LESS THAN 2- FEET OF COVER.
  2. TYPE 2 CATCH BASINS ARE REQUIRED WHEN THE INVERT ELEVATION IS MORE THAN 5- FEET BELOW RIM ELEVATION.



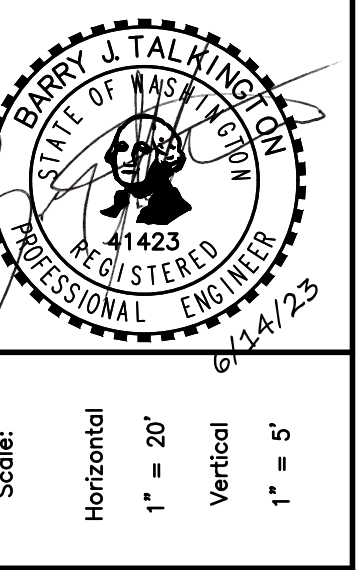
TOLT AVE (SR-203)  
SCALE: HORIZ. 1"=20' - VERT. 1"=5'

Revision	Date	By	Check	Appr.
24	4/28/23	TJS	TJS	BIT
25	16/14/23	TJS	TJS	BIT

**RRFB PLANS**  
CIVIL DEFERRED FRONTAGE/BRIDGE BP DATED 5/08/23

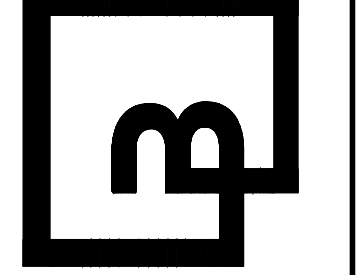
**Title:** FRONTAGE DRAINAGE PLAN AND PROFILE - TOLT AVE  
**FOR:** TOLT RIVER TERRACE

**For:** MAINUIE WA LLC  
110 112TH AVE NE, SUITE 202  
BELLEVUE, WA 98004



Scale: Horizontal 1" = 20', Vertical 1" = 5'

**Barghausen Consulting Engineers, Inc.**  
18215 72nd Avenue South  
Kent, WA 98032  
425.251.6222  
barghausen.com

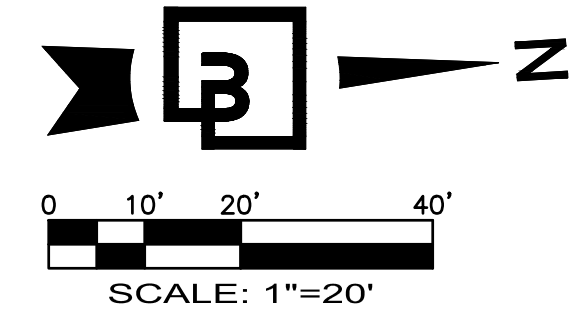


Job Number: 18057  
Sheet: 37 of 83

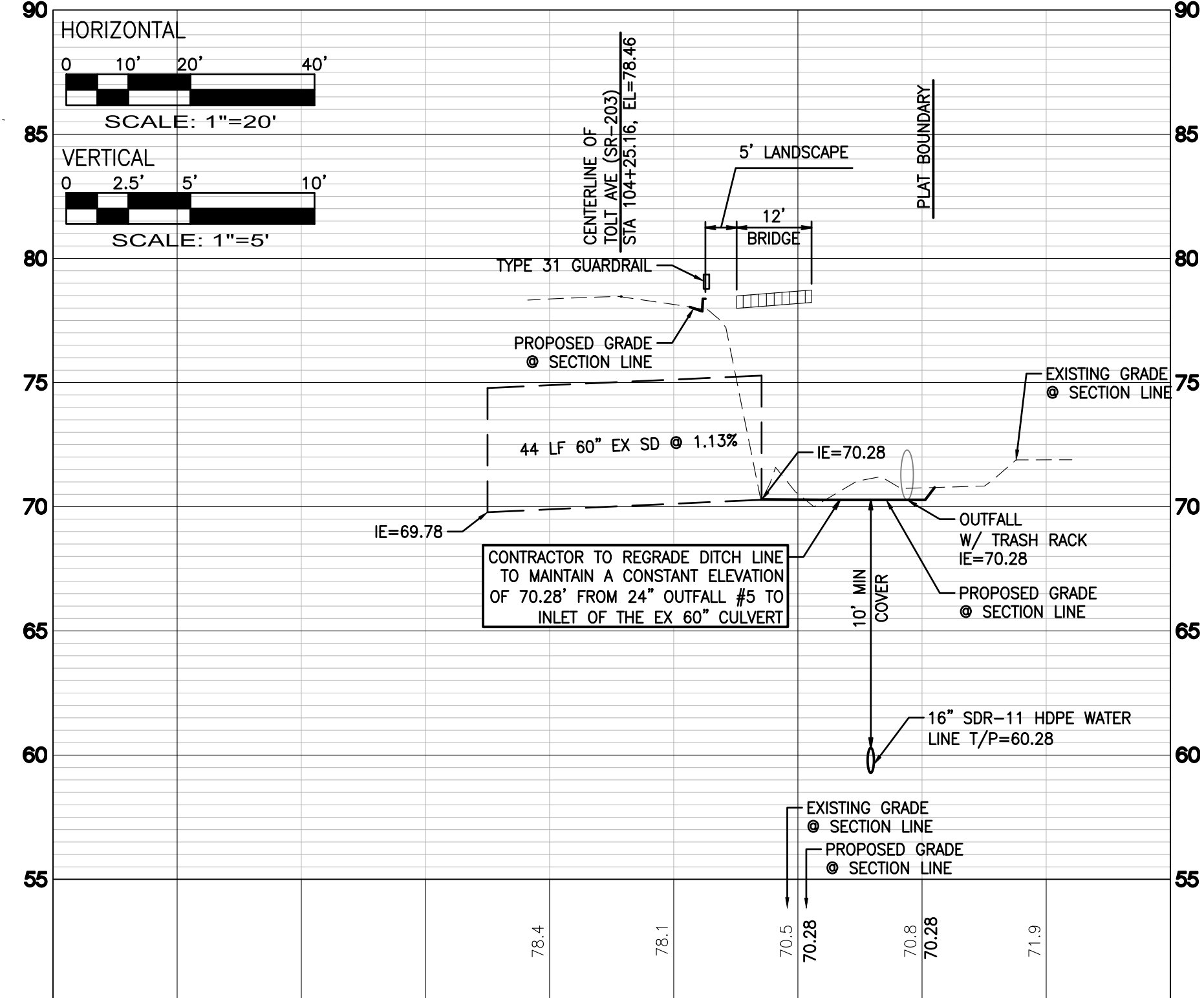
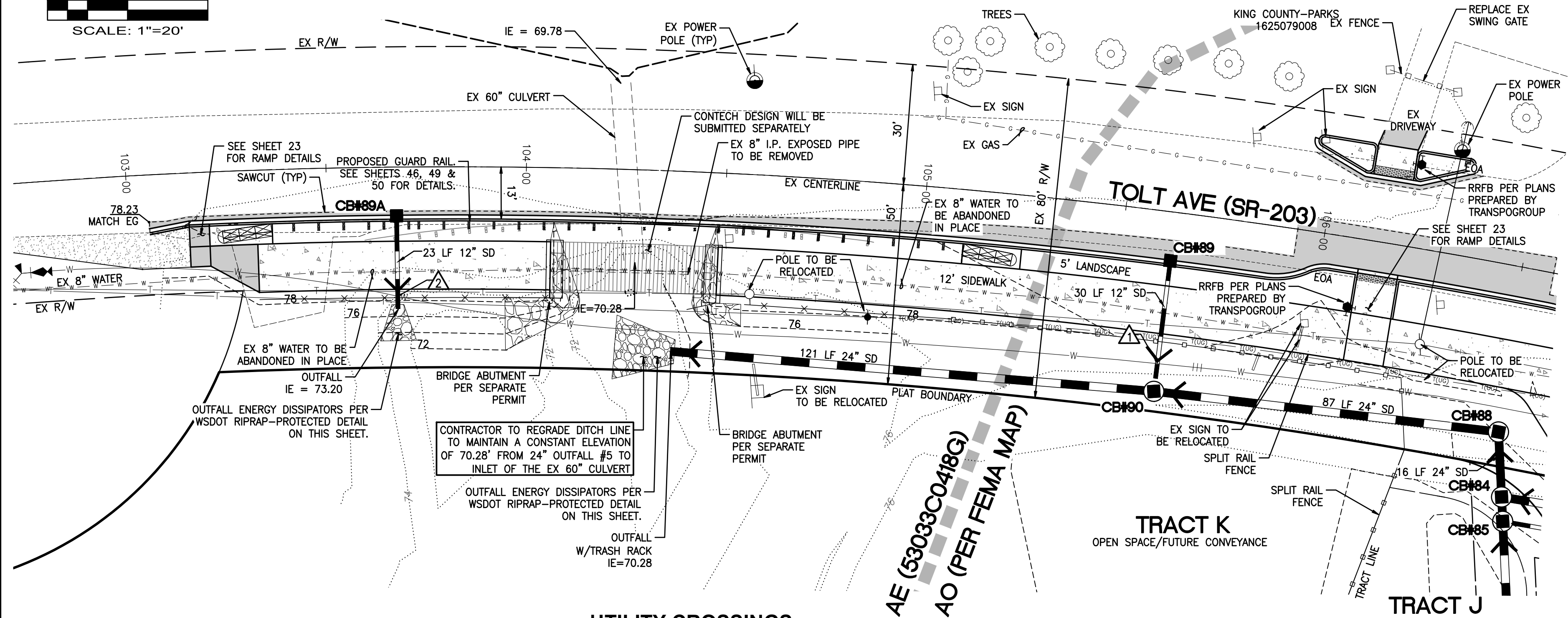
**CALL BEFORE YOU DIG:**  
1-800-424-5555

P:\18000a\18057\engineering\18057-6.dwg 6/13/2023 4:25 PM TSK004





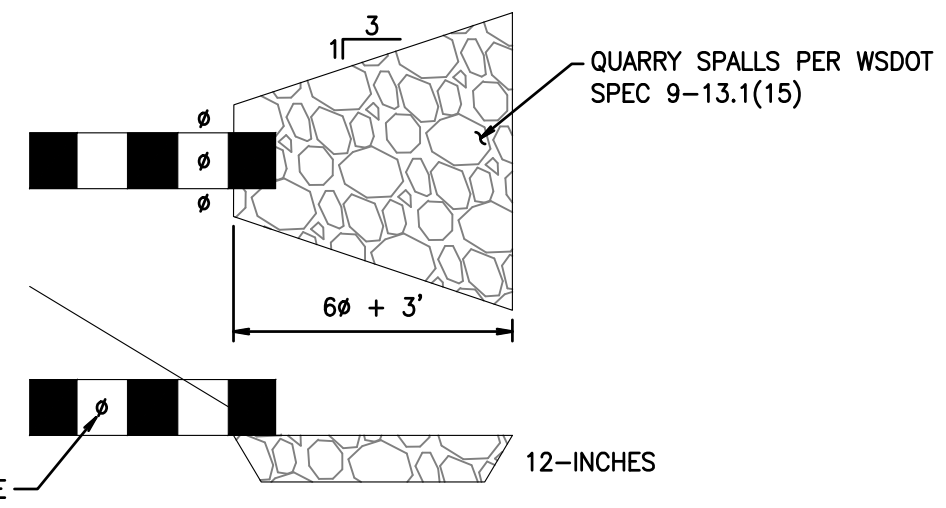
FRONTAGE DITCH LINE DRAINAGE PLAN + PROFILE - TOLT AVE  
FOR  
**PLAT OF TOLT RIVER TERRACE**  
A PORTION OF NE1/4, OF THE NW1/4 OF THE SE1/4 OF THE SW1/4 OF THE NE1/4 OF SEC. 21 TWP 25 N, RGE 7 E, WM  
CITY OF CARNATION, KING COUNTY, WASHINGTON



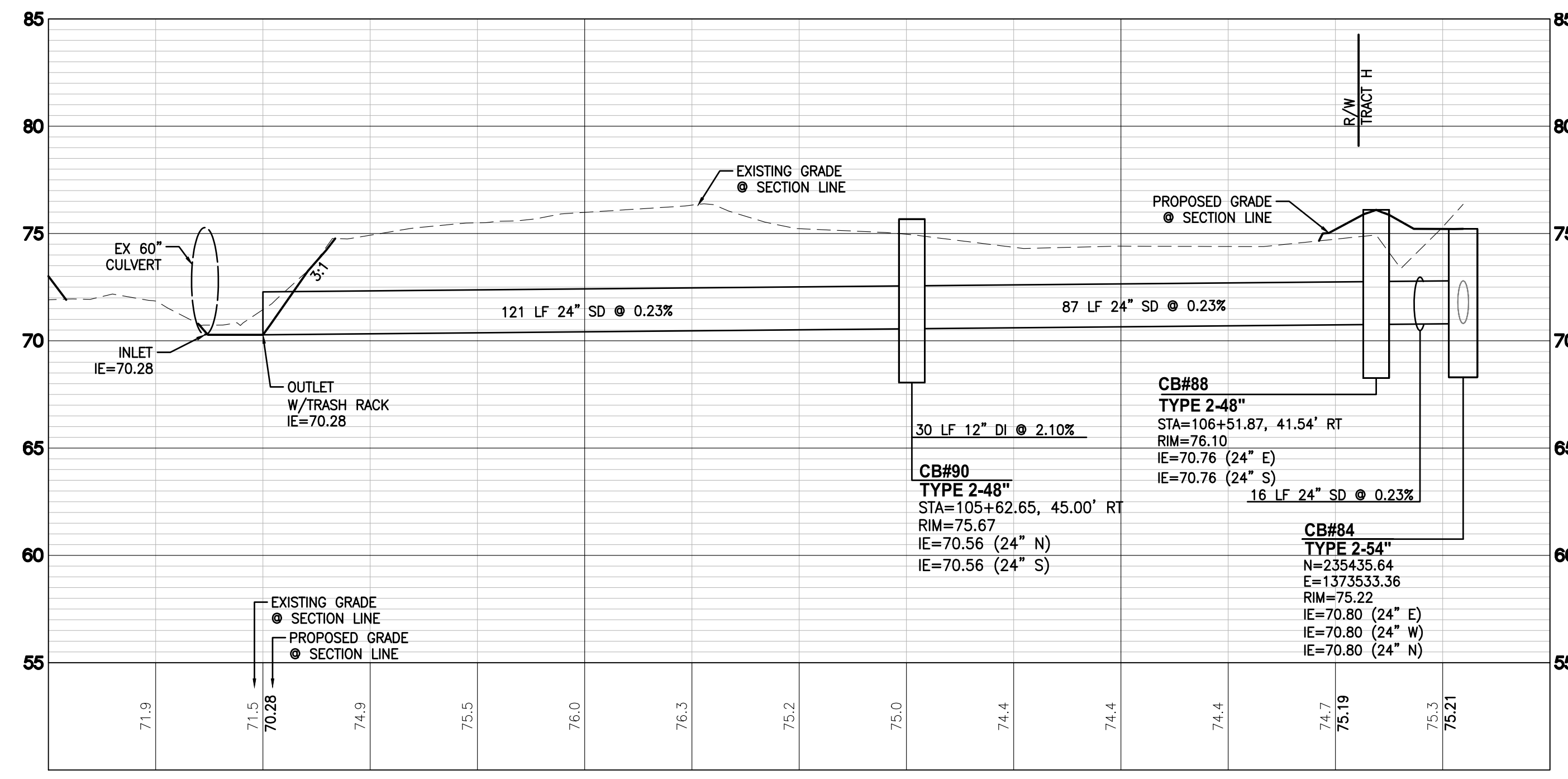
**EX 60" CULVERT**  
H: 1"=20' V: 1"=5'

- UTILITY CROSSINGS**
- ▲ STA 105+62.65, 37.99' RT  
IE 12" SD = 72.50  
T/P 12" W = 68.40
  - ▲ STA 103+67.61, 32.23' RT  
IE 12" SD = 73.40  
T/P 12" W = 57.20

ZONE AE (53033C0418Q)  
ZONE AO (PER FEMA MAP)



**WSDOT RIPRAP-PROTECTED DETAIL**



**STORM OUTFALL - TOLT AVE (SR-203)**  
SCALE: HORIZ. 1"=20' - VERT. 1"=5'

No.	Date	By	Chk.	Appr.	Revision
24	4/28/23	TJS	TJS	BIT	RRFB PLANS
25	6/14/23	TJS	TJS	BIT	CIVIL DEFERRED FRONTAGE BRIDGE BP DATED 5/08/23

Title: **FRONTAGE DITCH LINE DRAINAGE PLAN + PROFILE - TOLT AVE FOR TOLT RIVER TERRACE**

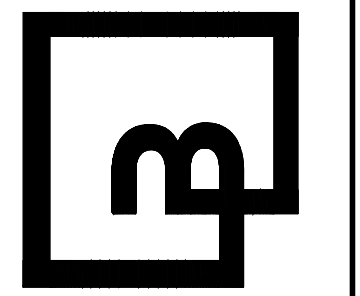
For: **MAINUJE WA LLC  
110 112TH AVE NE, SUITE 202  
BELLEVUE, WA 98004**



Designed	Drawn	Checked	Approved	Date
RK	RK	BIT	BIT	6/14/23

Scale: Horizontal 1" = 20', Vertical 1" = 5'

**Barghausen Consulting Engineers, Inc.**  
18215 72nd Avenue South  
Kent, WA 98032  
425.251.6222 [barghausen.com](http://barghausen.com)



Job Number: **18057**  
Sheet: **37A of 83**

**CALL BEFORE YOU DIG!**  
1-800-424-5555

P:\18000a\18057\engineering\18057-rw.dwg 6/13/2023 4:12 PM TSKODA

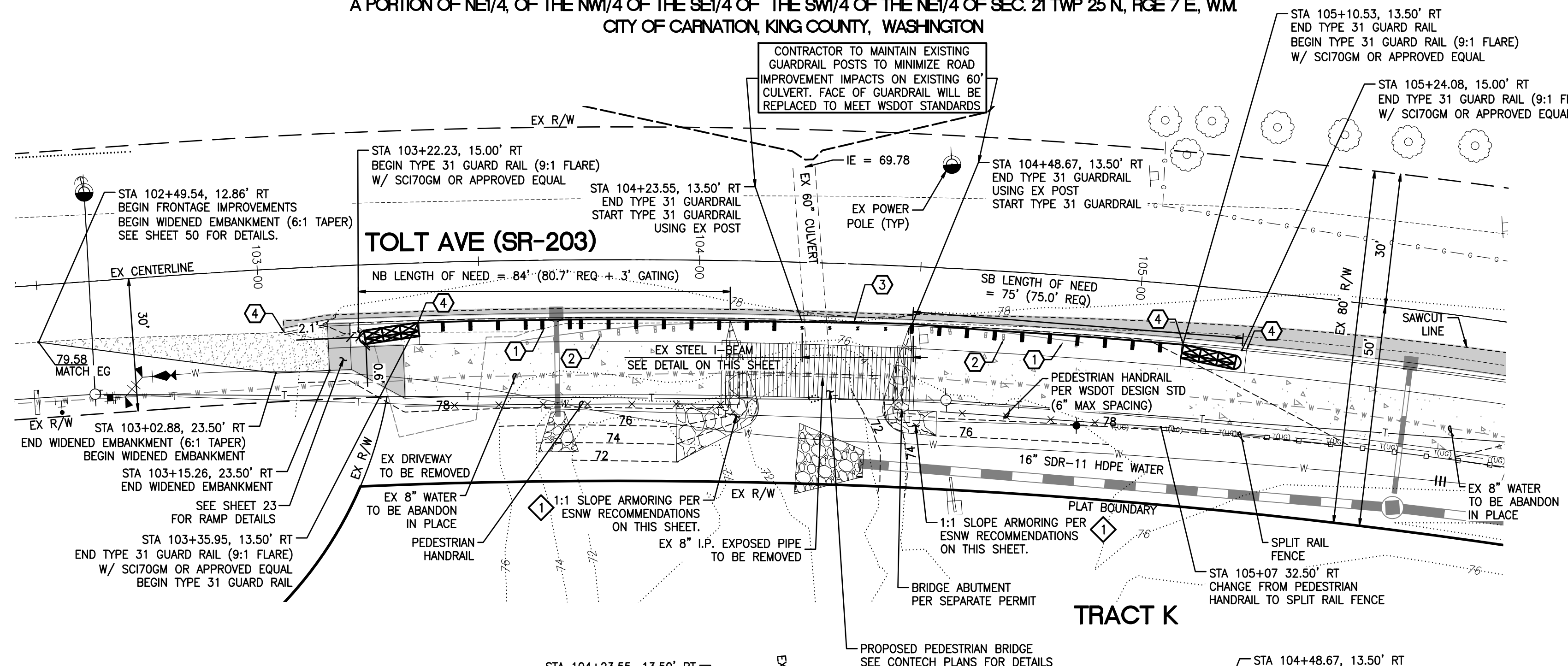
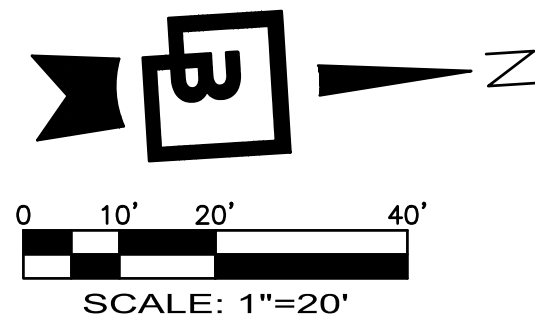


PEDESTRIAN BRIDGE + GUARDRAIL PLAN AND PROFILE

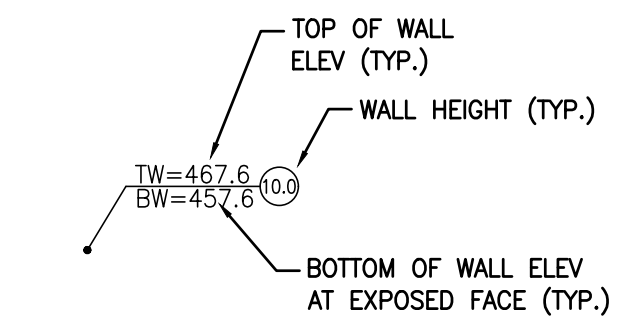
FOR

**PLAT OF TOLT RIVER TERRACE**

A PORTION OF NE1/4, OF THE NW1/4 OF THE SE1/4 OF THE SW1/4 OF THE NE1/4 OF SEC. 21 TWP 25 N, RGE 7 E, WM  
CITY OF CARNATION, KING COUNTY, WASHINGTON



**RETAINING WALL LEGEND**



**NOTES**

PEDESTRIAN BRIDGE AND RETAINING WALL TO BE PERMITTED SEPARATELY.

**GUARD RAIL NOTE:**

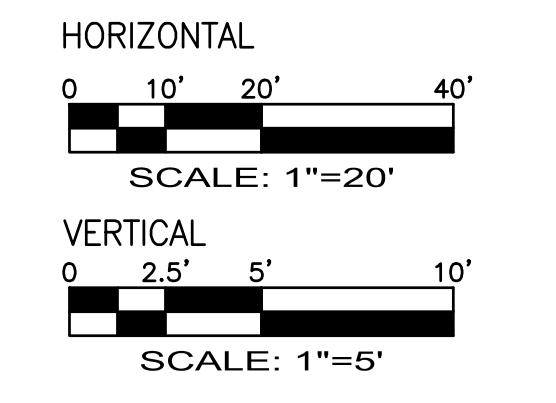
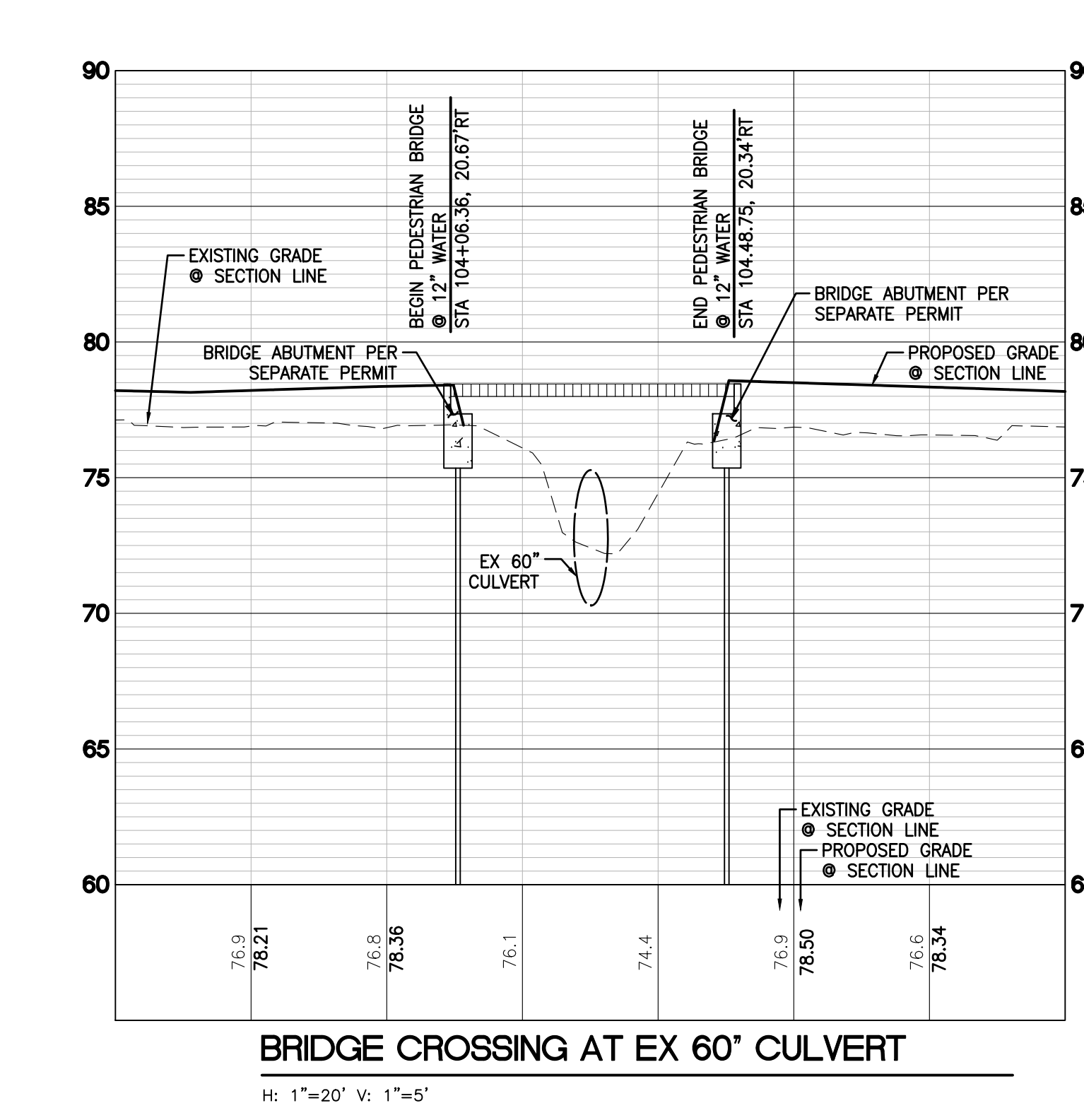
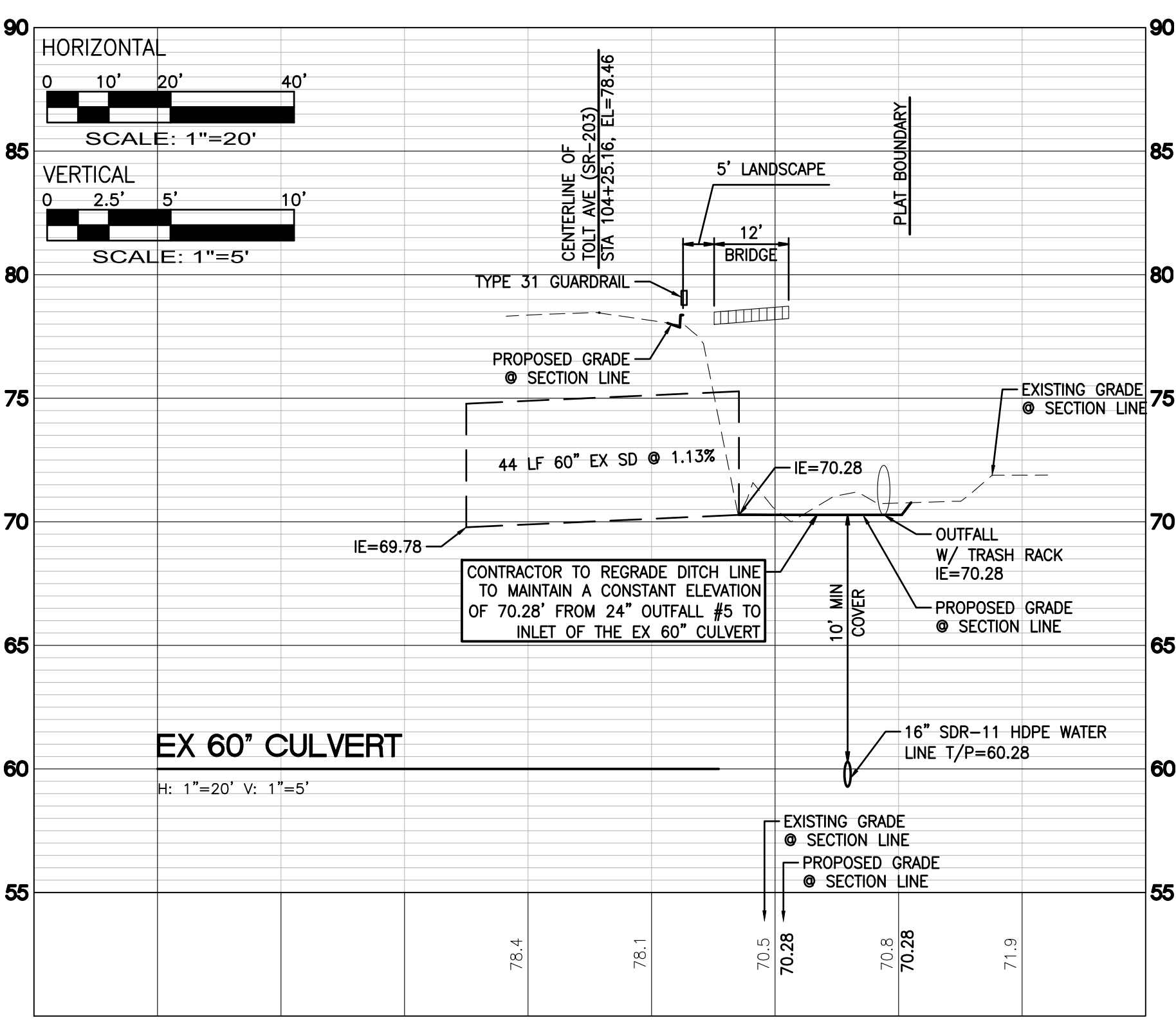
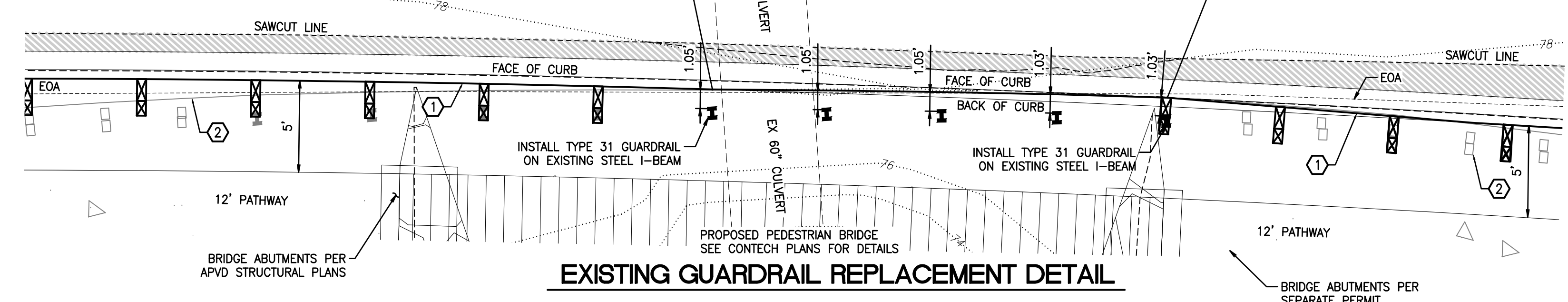
STATION AND OFFSET OF GUARD RAIL ARE ALONG THE FACE OF RAIL.

- 1) GUARD RAIL POST ALONG TOLT AVE SHALL BE 8 FEET LONG PER WSDOT EXHIBIT 1610-9.
- 2) REMOVE EXISTING TYPE 1 GUARDRAIL SYSTEM
- 3) PROPOSED GUARDRAIL. SEE SHEET 49 & 50 FOR DETAILS.
- 4) 4" VERTICAL CURB ADJACENT TO ATTENUATOR.

**ABUTMENT ARMORING**

ARMORING OF THE SIDE SLOPES SHALL INCORPORATE THE FOLLOWING:

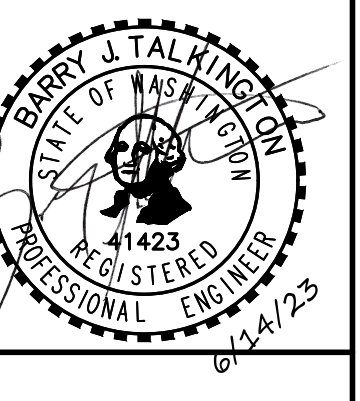
- DEPTH OF ARMORING: 2- FEET BELOW I.E. OF EXIST. CULVERT
  - ARMORING MATERIAL: 4- INCH TO 8- INCH CRUSHED ROCK BALLAST
  - ARMORING THICKNESS: 2- FEET MIN.
  - SIDE SLOPE STEEPNESS: 1H:1V OR FLATTER
- SEE GEOTECH REPORT PREPARED ESNW FOR MORE DETAILS.



No.	Date	By	Chk.	Appr.	Revision
24	4/28/23	TJS	TJS	BIT	RRFB PLANS
25	6/14/23	TJS	TJS	BIT	CIVIL DEFERRED FRONTAGE BRIDGE BP DATED 5/08/23

Title: **PEDESTRIAN BRIDGE + GUARDRAIL PLAN AND PROFILE FOR TOLT RIVER TERRACE**

For: **MAINUVE WA LLC  
110 112TH AVE NE, SUITE 202  
BELLEVUE, WA 98004**



Designed	Drawn	Checked	Approved	Date
JK	JK	BIT	BIT	6/14/23

Scale: Horizontal 1" = 20', Vertical 1" = 5'

**Barghausen Consulting Engineers, Inc.**  
18215 72nd Avenue South  
Kent, WA 98032  
425.251.6222 [barghausen.com](http://barghausen.com)

Job Number: **18057**  
Sheet: **46** of **83**

CALL BEFORE YOU DIG!  
1-800-424-5555

P:\180003\18057\engineering\18057-rd.dwg 6/14/2023 12:49 PM TSKODA



FRONTAGE FOG LINE REPLACEMENT PLAN

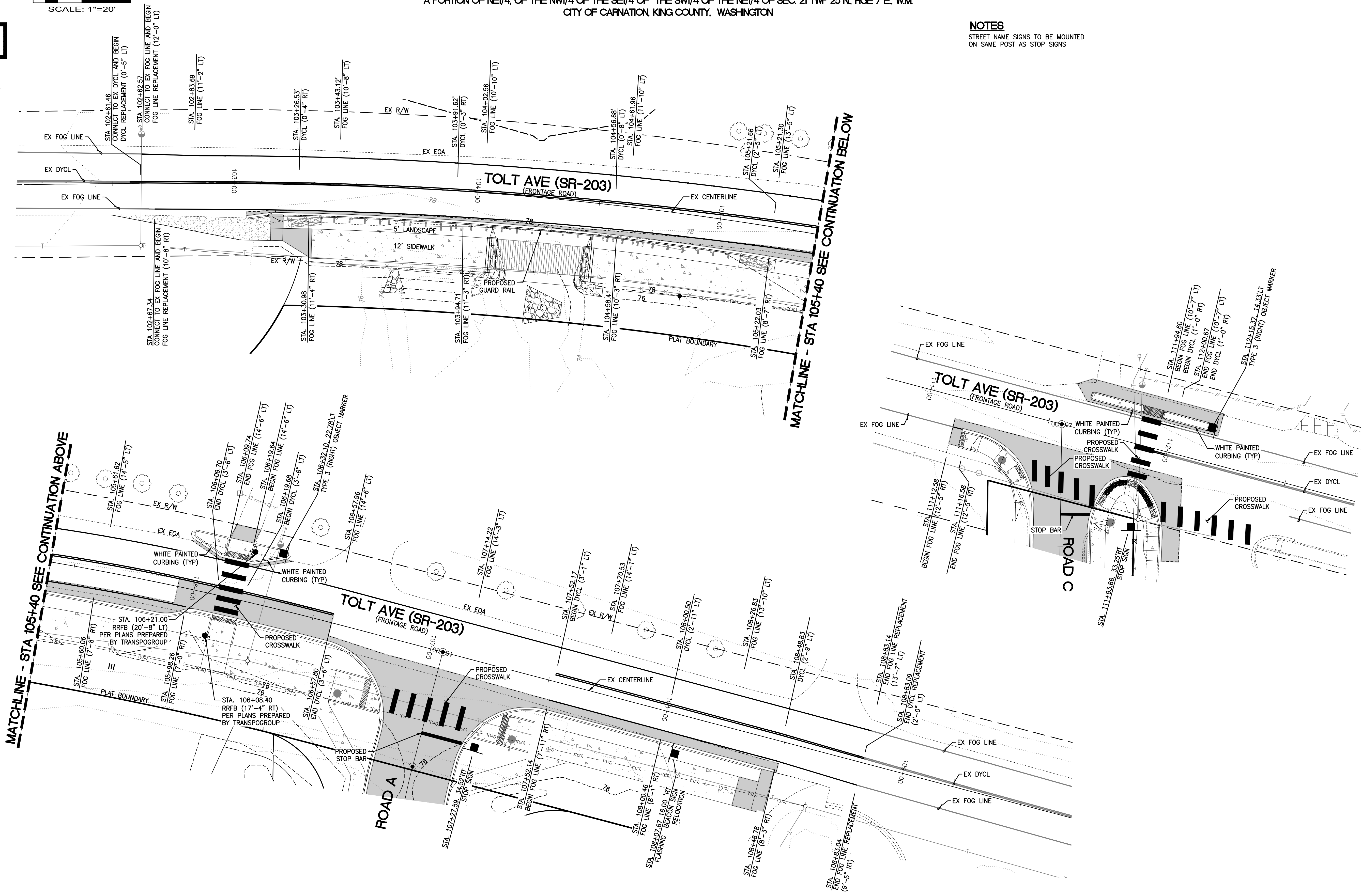
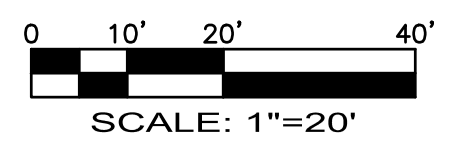
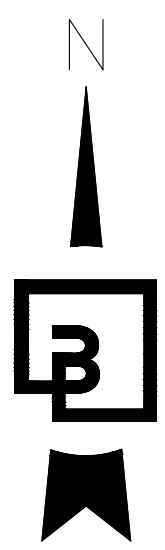
FOR

**PLAT OF TOLT RIVER TERRACE**

A PORTION OF NE1/4, OF THE NW1/4 OF THE SE1/4 OF THE SW1/4 OF THE NE1/4 OF SEC. 21 TWP 25 N, RGE 7 E, WM  
CITY OF CARNATION, KING COUNTY, WASHINGTON

**NOTES**

STREET NAME SIGNS TO BE MOUNTED  
ON SAME POST AS STOP SIGNS



24	4/28/23	TJS	TJS	BIT	RRFB PLANS
25	6/14/23	TJS	TJS	BIT	CIVIL DEFERRED FRONTAGE/BRIDGE BP DATED 5/08/23
No.	Date	By	Chk.	Appr.	Revision

Title: **FRONTAGE FOG LINE REPLACEMENT PLAN FOR TOLT RIVER TERRACE**

For: **MAINUIE WA LLC  
110 112TH AVE NE, SUITE 202  
BELLEVUE, WA 98004**

Scale: Horizontal 1" = 20', Vertical N/A

**Barghausen Consulting Engineers, Inc.**  
18215 72nd Avenue South  
Kent, WA 98032  
425.251.6222 [barghausen.com](http://barghausen.com)

Job Number: **18057**  
Sheet: **73 of 83**

CALL BEFORE YOU DIG!  
1-800-424-5555

P:\18000a\18057\engineering\18057-sc3.dwg 4/28/2023 1:52 PM TSKODA