



Press Contact: Ashlyn Farnworth (she/her/hers)
Phone: (425) 786 – 4402
Email: ashlyn.farnworth@carnationwa.gov

FOR IMMEDIATE RELEASE
Monday, July 10th, 2023

PRESS RELEASE

KING COUNTY CONDUCTS MAINTENANCE AT TOLT MACDONALD PARK'S MARINER FIELD PARKING LOT

CARNATION, Washington – King County Parks is conducting parking lot maintenance at Tolt Macdonald Park this September.

Tolt Macdonald Park, located at 31020 NE 40th Street in Carnation, is a 575 – acre Park and Campground that boasts riverside trails, ballfields, a playground structure, and a 500-foot suspension bridge over the Snoqualmie River.

“The park features six yurts overlooking the river and seasonal camping for RVs, tents, and two large-group campsites - all with fire pits,” says the King County Parks website. “There are also two large picnic shelters and a beautifully restored barn available for company picnics, weddings, and other special events.”

The Mariner Field parking lot will have tree stump grinding, asphalt repair, slurry seal, pavement markings, wheel stop replacement, extruded curb repairs, and signage installation.

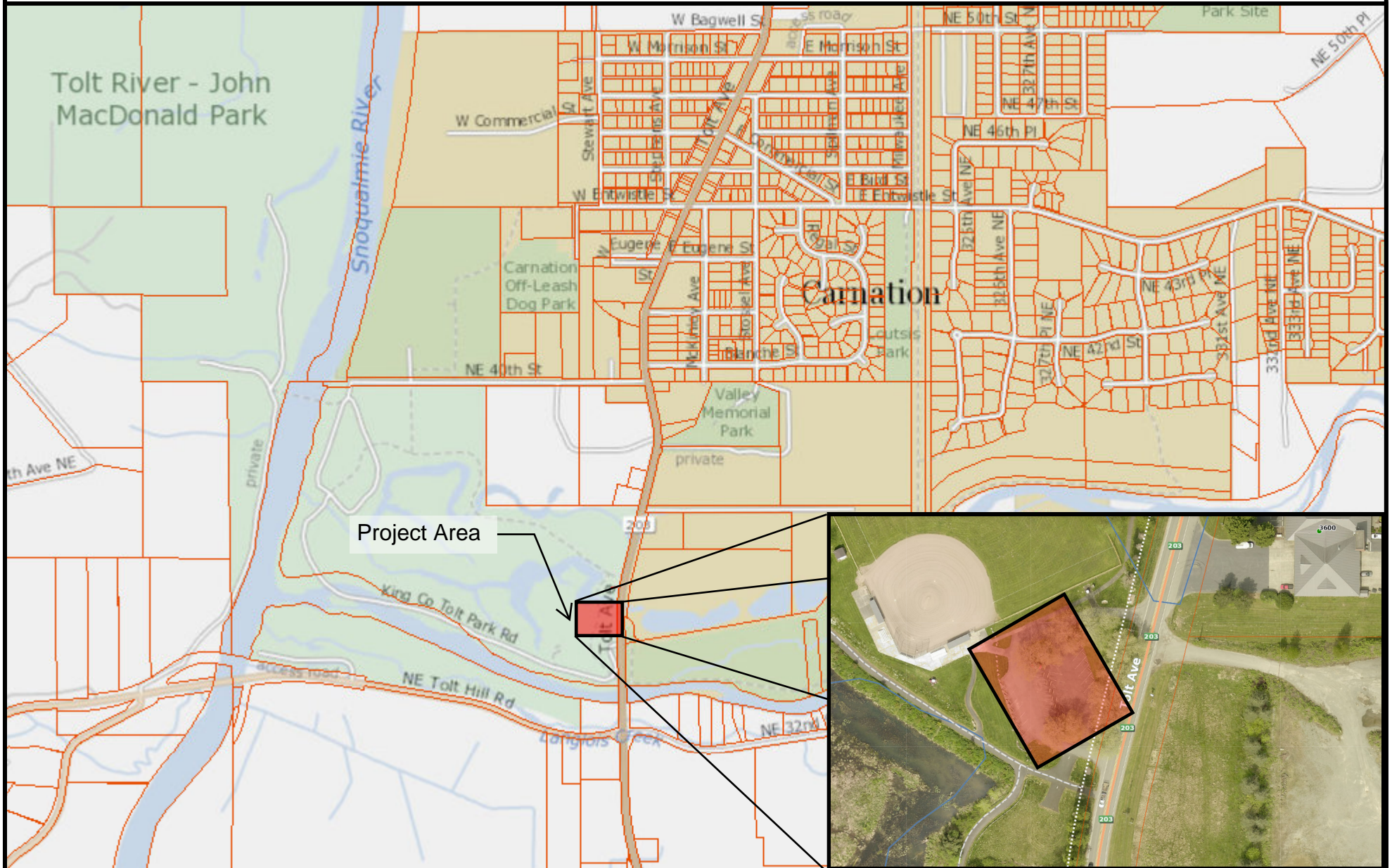
King County Capital Improvement Manager Samantha Dykes anticipates this work to take place in September 2023 and last about 2-3 weeks. Activities will be restricted to the Mariner Field parking lot, with contractor vehicles occasionally entering and exiting onto State Route 203 (Fall City-Carnation Rd NE). The parking lot will be closed for the duration of the project. Please see the attached vicinity map of the project site.

For more information, contact Samantha Dykes at samantha.dykes@kingcounty.gov or via cell at (206) 263-3349.

###

Carnation is a rural western Washington community of 2,220 residents that is approximately 1.1 square miles in size. Framed by the Cascade foothills and located where the Tolt and Snoqualmie Rivers meet, the City is within easy reach of Seattle. Carnation offers an abundance of natural beauty and outdoor experiences, including biking, hiking, camping, and fishing. In our downtown, you can visit our unique shops and restaurants.

Tolt MacDonald Mariner Field Pavement Repair



The information included on this map has been compiled by King County staff from a variety of sources and is subject to change without notice. King County makes no representations or warranties, express or implied, as to accuracy, completeness, timeliness, or rights to the use of such information. This document is not intended for use as a survey product. King County shall not be liable for any general, special, indirect, incidental, or consequential damages including, but not limited to, lost revenues or lost profits resulting from the use or misuse of the information contained on this map. Any sale of this map or information on this map is prohibited except by written permission of King County.

Date: 7/6/2023

Notes:



King County