



CARNATION CITY COUNCIL AGENDA Special Meeting

Mayor Jim Ribail, Deputy Mayor Adair Hawkins, Brodie Nelson, Ryan Burrell, Jessica Merizan

DATE: February 20, 2024

TIME: 5:00 P.M.

LOCATION: City Hall (4621 Tolt Avenue)

1. **CALL TO ORDER:** Mayor Jim Ribail
2. **ROLL CALL:** City Clerk Lora Wilmes
3. **PRESENTATION:**
 - a. Judge Rebecca Robertson – King County District Court Chief Presiding Judge
 - b. What is a Plat – Rhonda Ender
 - c. Rivers Edge Park – Rhonda Ender
 - d. Logic Model – Ana Cortez
4. **ADJOURNMENT:** Mayor Jim Ribail



City of Carnation

Organizational Structure

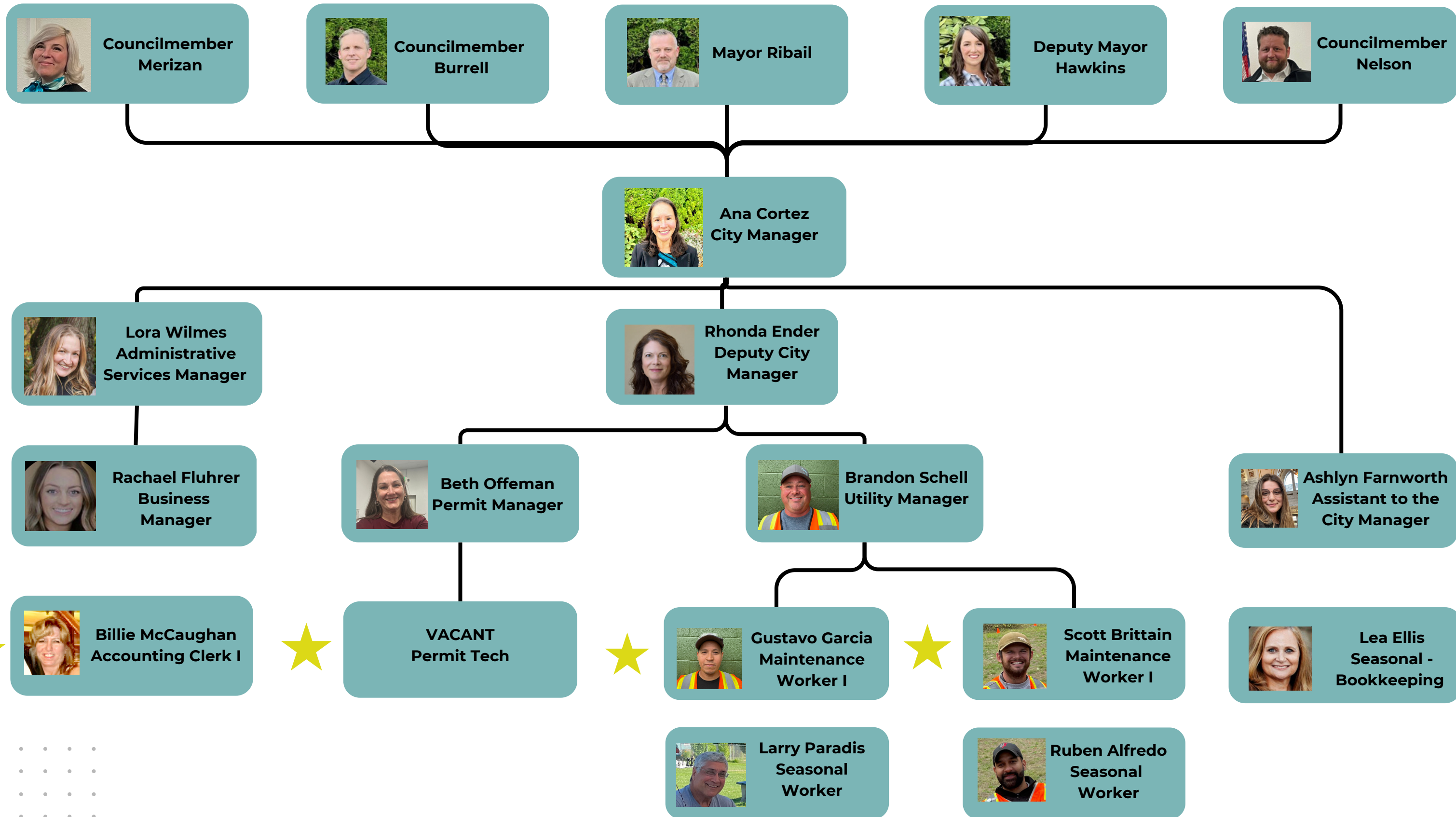
Presented at the February 6, 2024
Council Meeting



BRANCHES OF GOVERNMENT

Judicial	Quasi-Judicial	Legislative	Executive
<ul style="list-style-type: none"> • Prosecution • Public Defense 	Land use decisions	<ul style="list-style-type: none"> • Ordinances • Resolutions • Strategic Decisions 	<ul style="list-style-type: none"> • <i>Implementation of Ordinances & Resolutions.</i> • Municipal Services: <ul style="list-style-type: none"> ◦ Public Safety ◦ Public Works ◦ Streets + Parks ◦ Economic Development
LEGAL COUNSEL	COUNCIL	COUNCIL AND CLERK	CITY MANAGER

ORGANIZATIONAL CHART - IN PRACTICE



= Union Member



What is a Plat: Part I

Rhonda Ender

Deputy City Manager/CED Principal

Platting

Platting or subdividing means the division or redivision of land into lots, tracts, parcels, sites or divisions for the purpose of sale, lease, or transfer of ownership.

2

Platting is a 2-Step Process:

- **Preliminary Plat Process**
- **Final Plat Process**

Preliminary Plat

- ▶ Preliminary plat or preliminary short plat means a neat and approximate drawing of a proposed subdivision showing the general layout of streets and alleys, lots, blocks, restrictive covenants, and other elements of a subdivision consistent with the requirements of this title. The preliminary plat shall be the basis for the approval or disapproval of the general layout of a subdivision.
- ▶ Approval of the preliminary plat shall establish the basis upon which the applicant may proceed with development of the subdivision and **preparation of the final plat subject only to all the conditions of preliminary approval imposed on the preliminary plat.**

3

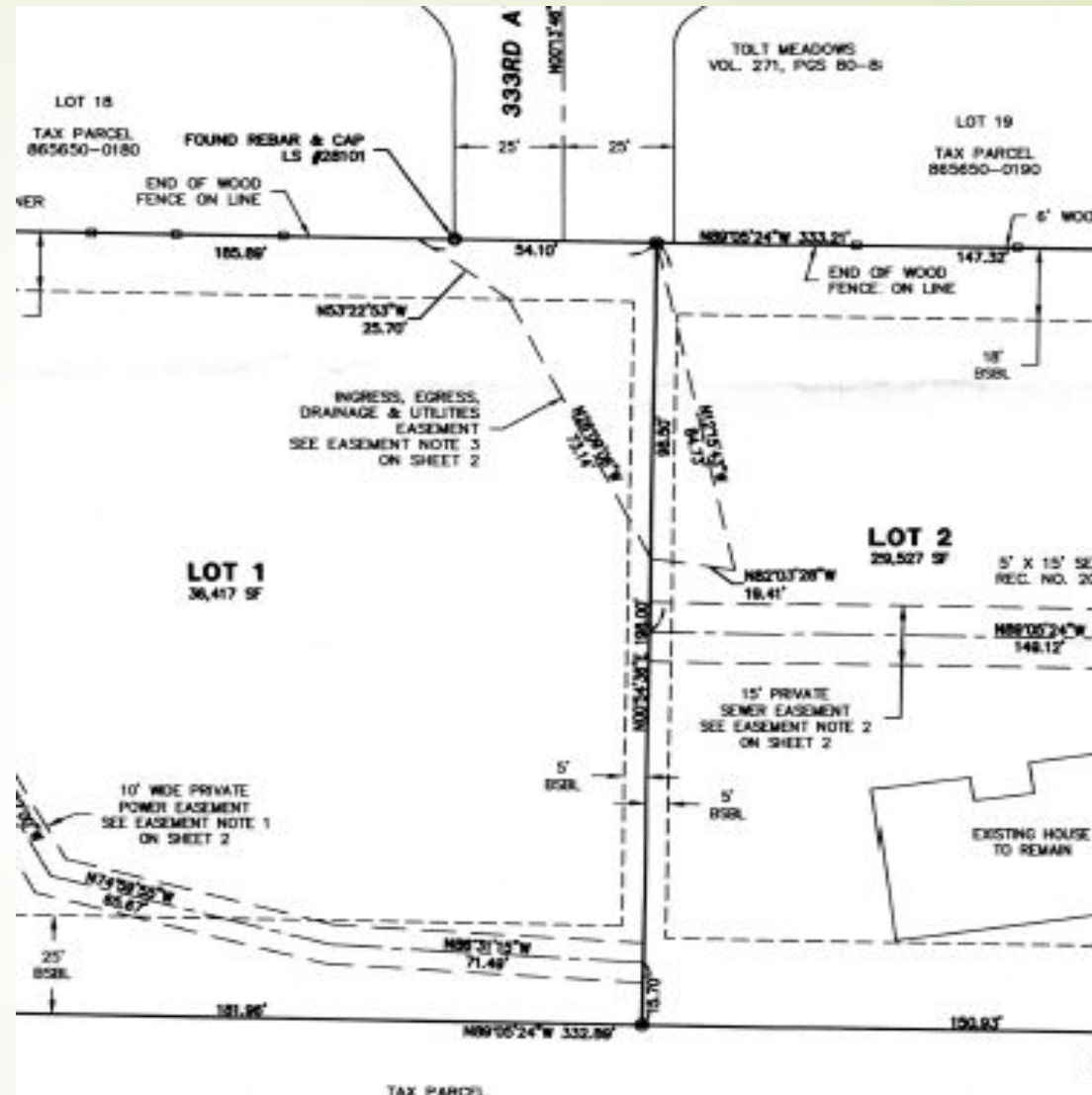


Long Plat Example

Long vs. Short

➤ Plat (aka Long Plat or Formal Plat) = subdividing into 5 or more lots.

➤ Short Plat = subdividing into 4 or fewer lots.



Short Plat Example

Final Plat

- ▶ Final plat means the final drawing of the subdivision and dedication prepared for filing for record with the county assessor and containing all elements and requirements.
- ▶ Final plat to conform to the preliminary plat.
- ▶ Following preliminary plat approval, the developer is in position to go ahead with the improvement **with the assurance that the final plat will be approved pursuant to City requirements** (*CED Department confirms requirements have been met*).

Brief Overview of Process

1- Pre-Application Conference

A developer or applicant requests a pre-application conference to discuss prospective plans and requirements. *Pre-apps are not required but recommended.*

2- Application

A developer or applicant submits an application to subdivide a lot.

3- Planning

City Staff and Consultants review the application for completeness and consistency with relevant codes.

4- Notice of Application

Public distribution and public comment period.

5- Open Public Hearing

For Long Plats only.

6- Decision by Primary Decision Maker

See next slide.

Decision Making on Plats

Short Plat (4 or fewer lots)

For Preliminary Short Plat Approval:

- Type II Permit
- Review & Approval Authority: DCM / Planner
- Open Record Appeal/Hearing (if applicable): Hearing Examiner Appeal

For Final Short Plat Approval:

- Type II Permit
- Review & Approval Authority: DCM / Planner
- Open Record Appeal/Hearing (if applicable): Hearing Examiner Appeal

Decision Making on Plats

Long Plat (5 or more lots)

For Preliminary Plat Approval:

- Type IV Permit
- Review & Approval Authority: Hearing Examiner
- Open Record Appeal/Hearing: Hearing Examiner Public Hearing

For Final Plat Approval:

- Type V Permit
- Review & Approval Authority: **City Council**
- Open Record Appeal/Hearing: None for final plat

City Council Approval of Final Plat



Staff report provided by City Planner/CED Department



Staff Report confirms conformity to preliminary plat & all requirements have been met. **New requirements are not permitted.**



Council approves as long as there is conformity to approved preliminary plat & requirements have been met.

10 Questions?



RIVER'S EDGE PARK



HD_007_24

Color Option : A

COLOR KEY

POST & COMPONENTS



BROWN SAND

ROTO



BROWN FOREST GREEN

SHEET PLASTIC



DARK BROWN FOREST GREEN FOREST GREEN-SAND

DECK



GRAY











RIVER'S EDGE PARK



HD_007_24

Color Option : A

COLOR KEY	POST & COMPONENTS		ROTO		SHEET PLASTIC			DECK
								
	BROWN	SAND	BROWN	FOREST GREEN	DARK BROWN	FOREST GREEN	FOREST GREEN-SAND	GRAY



RIVER'S EDGE PARK



HD_007_24

Color Option : A

COLOR KEY

POST & COMPONENTS



BROWN SAND

ROTO



BROWN FOREST GREEN

SHEET PLASTIC



DARK BROWN FOREST GREEN FOREST GREEN-SAND

DECK



GRAY



RIVER'S EDGE PARK



HD 007 24

Color Option : A

COLOR KEY

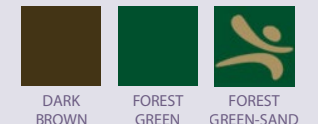
POST & COMPONENTS



ROTO

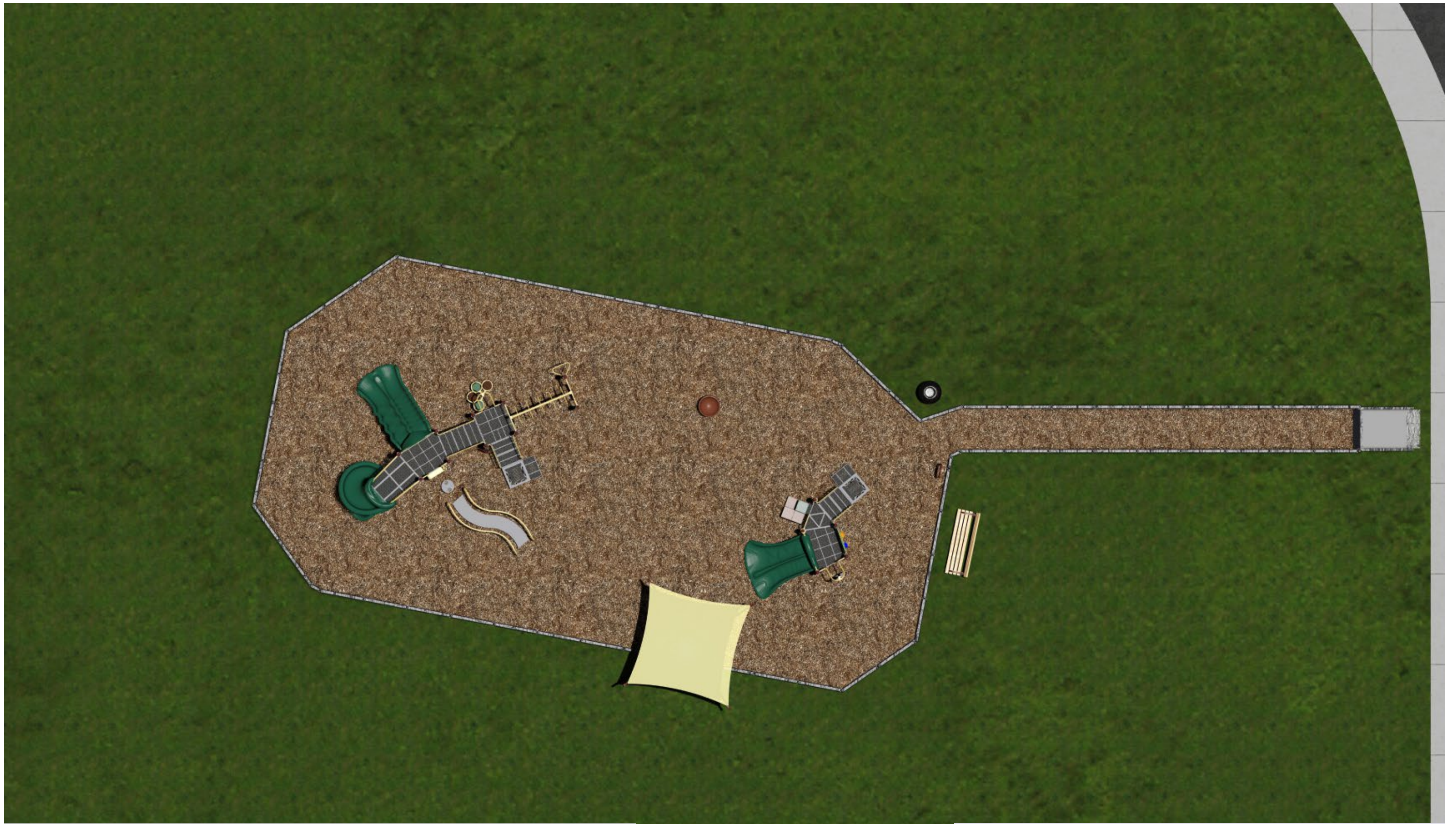


SHEET PLASTIC



DECK




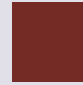






RIVER'S EDGE PARK



HD_007_24

Color Option : A

COLOR KEY	POST & COMPONENTS		ROTO		SHEET PLASTIC			DECK
								
	BROWN	SAND	BROWN	FOREST GREEN	DARK BROWN	FOREST GREEN	FOREST GREEN-SAND	GRAY



**Northwest Playground
Equipment, Inc.**

BUILDING COMMUNITY THROUGH PLAY

P.O. Box 2410 Issaquah, WA 98027
Toll Free: 1.800.726.0031
www.nwplayground.com
sales@nwplayground.com

EQUIPMENT SIZE:

USE ZONE:

AREA: PERIMETER:
SEE PLAN

FALL HEIGHT:
8 Ft.

USER CAPACITY: AGE GROUP:
46



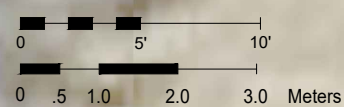
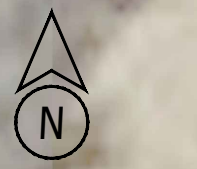
RIVER'S EDGE PARK

ADA SCHEDULE	Total Elevated Play Activities: 10		
	Total Ground-Level Play Activities: 5		
	Accessible Elevated Activities	Accessible Ground-Level Activities	Accessible Ground-Level Play Types
Required	5	3	3
Provided	10	5	4

- ASTM F1487-21
- CPSC #325



PROJECT NO: IHD_007_24	SCALE: 1/8" = 1'-0"
DRAWN BY: ZTM	Paper Size B
DATE: 3-Jan-24	



***PLAYGROUND SUPERVISION REQUIRED**

River's Edge Park

Design Number: IHD_007_24 - Bill Of Material

Ref. No.	Part No.	Description	Quantity
Posts			
1	ZZCH0018	POST W/RIVETED CAP 3.5in OD x 124in STEEL	7
2	ZZCH0028	POST W/ RIVETED CAP 3.5in OD x 136in STEEL	4
3	ZZCH0038	POST W/ RIVETED CAP 3.5in OD x 148in STEEL	2
4	ZZCH0048	W/ RIVETED CAP 3.5in OD x 160in STEEL POST	2
Decks & Kick Plates			
5	ZZCH0616	SQUARE COATED DECK ASSEMBLY	1
6	ZZCH0617	ASSEMBLY TRIANGULAR COATED DECK	1
7	ZZCH0636	ASSEMBLY DOUBLE SLIDE COATED DECK	2
8	ZZCH2530	12in DECK TO DECK KICK PLATE	1
9	ZZUN2290	KIT COATED DECK TO DECK CONNECTION	1
ADA Items			
10	ZZCH2008	(36in DECK) TRANSFER STATION w/BARRIERS	2
11	ZZUN2019	STATION APPROACH STEP FOR TRANSFER	2
Slides			
12	ZZCH2737	(60in DECK) RUMBLE SEAT	1
13	ZZCH3537	SLIDE- NUVO 360 SPIRAL SLIDE	1
14	ZZCH3538	NUVO 36in DOUBLE SLIDE	1
Activity Panels			
15	ZZCH4290	POST MOUNTED STEERING WHEEL	1
16	ZZCH4446	SLIDE-N-LEARN PANEL	1
Climbers			
17	ZZCH7087	CLIMBER (36in) CLIMBING SQUARES BLOCK	1
18	ZZCH7657	(36in & 30in DECK) SOLAR CLIMBER	1
19	ZZCH7956	(60in DECK) SILO CLIMBER	1
20	ZZCH8100	(36in DECK) BEANSTALK CLIMBER	1
Overhead Events			
21	ZZCH5770	LEG LIFT	1
22	ZZCH5780	6ft HORIZONTAL LOOP LADDER	1
23	ZZCH5970	(36in DECK) OVERHEAD EVENT ACCESS LADDER	1
Audible Activities			
24	ZZCH4409	ACCESSIBLE BELL PANEL	1
Stairs and Ladders			
25	ZZCH9170	(DECK TO DECK) 24in ACCESS STEPPED PLATFORM	1
Additional Tool & Maintenance Kits			
26	ZZUN1471	INSTALLER HARDWARE KIT	2
27	ZZUN9930	W/ AEROSOL PIPE SYSTEMS MAINTENANCE KIT	2
28	ZZUN9936	MAINTENANCE BOOK	1
29	ZZXX0678	- ASTM LABEL KIT- COMPOSITE STRUCTURE	1
30	ZZXXGNGUIC	GENERAL INSTALLERS GUIDE	3



River's Edge Park

Design Number: IHD_007_24 - Compliance and Technical Data

Reference Document: ASTM F1487

Ref. No.	Part No.	Qty.	Description	Unit ASTM Status	Total Weight (lbs)	Pre-Consumer Recycled Content (lbs)	Post-Consumer Content (lbs)	CO2e Footprint (kgs)	Users	Install Hours	Concrete (Yds3)	Active Play Events
1	ZZCH0018	7	POST W/RIVETED CAP 3.5in OD x 124in STEEL	Certified	272.37			377	0	7.00	0.88	0
2	ZZCH0028	4	POST W/ RIVETED CAP 3.5in OD x 136in STEEL	Certified	174.04			234	0	4.00	0.50	0
3	ZZCH0038	2	POST W/ RIVETED CAP 3.5in OD x 148in STEEL	Certified	94.22			127	0	2.00	0.25	0
4	ZZCH0048	2	W/ RIVETED CAP 3.5in OD x 160in STEEL POST	Certified	100.42			136	0	2.00	0.25	0
5	ZZCH0616	1	SQUARE COATED DECK ASSEMBLY	Certified	54.86			174	3	1.00	0.00	0
6	ZZCH0617	1	ASSEMBLY TRIANGULAR COATED DECK	Certified	29.90			120	2	1.00	0.00	0
7	ZZCH0636	2	ASSEMBLY DOUBLE SLIDE COATED DECK	Certified	127.72			370	6	2.00	0.00	0
8	ZZCH2008	2	(36in DECK) TRANSFER STATION w/BARRIERS	Certified	353.00			769	4	4.00	0.18	0
9	ZZCH2530	1	12in DECK TO DECK KICK PLATE	Certified	8.85			17	0	0.50	0.00	0
10	ZZCH2737	1	(60in DECK) RUMBLE SEAT	Certified	201.86			762	4	3.00	0.06	1
11	ZZCH3537	1	SLIDE- NUVO 360 SPIRAL SLIDE	Certified	650.00			1,417	2	6.00	0.15	1
12	ZZCH3538	1	NUVO 36in DOUBLE SLIDE	Certified	157.29			683	2	2.00	0.06	1
13	ZZCH4290	1	POST MOUNTED STEERING WHEEL	Certified	7.83			44	1	0.25	0.00	1
14	ZZCH4409	1	ACCESSIBLE BELL PANEL	Certified	22.16			211	1	0.50	0.00	1
15	ZZCH4446	1	SLIDE-N-LEARN PANEL	Certified	57.80			516	1	1.00	0.00	1
16	ZZCH5770	1	LEG LIFT	Certified	6.76			30	1	0.50	0.00	1
17	ZZCH5780	1	6ft HORIZONTAL LOOP LADDER	Certified	55.72			124	4	1.00	0.00	1
18	ZZCH5970	1	(36in DECK) OVERHEAD EVENT ACCESS LADDER	Certified	25.12			71	1	1.50	0.06	0
19	ZZCH7087	1	CLIMBER (36in) CLIMBING SQUARES BLOCK	Certified	129.12			437	2	4.00	0.12	1
20	ZZCH7657	1	(36in & 30in DECK) SOLAR CLIMBER	Certified	79.63			236	2	1.50	0.03	1
21	ZZCH7956	1	(60in DECK) SILO CLIMBER	Certified	78.25			139	1	1.50	0.06	1
22	ZZCH8100	1	(36in DECK) BEANSTALK CLIMBER	Certified	69.63			273	1	1.00	0.03	1
23	ZZCH9170	1	(DECK TO DECK) 24in ACCESS STEPPED PLATFORM	Certified	135.24			296	1	2.00	0.00	0



River's Edge Park

Design Number: IHD_007_24 - Compliance and Technical Data

Reference Document: ASTM F1487

Ref. No.	Part No.	Qty.	Description	Unit ASTM Status	Total Weight (lbs)	Pre-Consumer Recycled Content (lbs)	Post-Consumer Content (lbs)	CO2e Footprint (kgs)	Users	Install Hours	Concrete (Yds3)	Active Play Events
24	ZZUN2019	2	STATION APPROACH STEP FOR TRANSFER	Certified	71.66			144	2	2.00	0.08	0
25	ZZUN2290	1	KIT COATED DECK TO DECK CONNECTION	Certified	0.29			4	0	0.50	0.00	0
26	ZZUN9936	1	MAINTENANCE BOOK	N/A	1.00			0	0	0.25	0.00	0
27	ZZXX0065	1	SPIN CUP	Certified	57.21			301	1	2.00	0.12	1
28	ZZXX0341	1	BALANCE TRAX POND	Certified	16.80			41	1	0.75	0.03	1
29	ZZXX0344	1	BALANCE TRAX SNAKE	Certified	164.20			402	3	4.00	0.21	1
30	ZZXX0678	1	- ASTM LABEL KIT- COMPOSITE STRUCTURE	N/A	0.04			0	0	0.08	0.00	0
31	ZZXX0810	1	14ft SHADE HYPAR	Certified	279.59			1,621	0	8.00	0.35	0
32	ZZXX8905	1	BORDER TIMBER WHEELCHAIR ACCESS RAMP -	N/A	213.68			456	0	1.00	0.00	0
33	ZZXX9409	5	1ft BORDER TIMBER w/STAKE	N/A	27.55			65	0	1.25	0.00	0
34	ZZXX9410	1	2ft BORDER TIMBERS w/STAKE	N/A	7.61			16	0	0.25	0.00	0
35	ZZXX9430	58	4ft BORDER TIMBERS w/STAKE	N/A	597.98			1,154	0	14.50	0.00	0
Totals:					4,329.40	865	922	11,762	46	83.83	3.41	15
					0 Kg	0 Kg	0 Kg	0 Metric Tons			0 m3	



River's Edge Park

Design Number: IHD_007_24 - Compliance and Technical Data

Reference Document: ASTM F1487

Ref. No.	Part No.	Qty.	Description	Unit ASTM Status	Total Weight (lbs)	Pre-Consumer Recycled Content (lbs)	Post-Consumer Recycled Content (lbs)	CO2e Footprint (kgs)	Install Users	Install Hours	Concrete (Yds3)	Active Play Events
----------	----------	------	-------------	------------------	--------------------	-------------------------------------	--------------------------------------	----------------------	---------------	---------------	-----------------	--------------------

ASTM F1487

The lay-out for this custom playscape, design number IHD_007_24, has been configured to meet the requirements of the ASTM F1487 standard. In addition, each of the above components listed as "Certified" have been tested and are IPEMA certified. Components listed as "Not Applicable" do not fall within the scope of the ASTM F1487 standard and have not been tested. IPEMA certification can be verified on the IPEMA website, www.ipema.org. In the interest of playground safety, IPEMA provides a Third Party Certification Service which validates compliance.

2010 ADA Standards for Accessible Design

The lay-out was also designed to meet the 2010 Standards published 15-Sep-2010, by the Department of Justice when installed over a properly maintained surfacing material that is in compliance with ASTM F1951 "Accessibility of Surface Systems Under and Around Playground Equipment" as well as ASTM F1292, "Impact Attenuation of Surfacing Materials Within the Use Zone of Playground Equipment", appropriate for the fall height of the structure.

Installation Times

Installation times are based on one experienced installer. A crew of three experienced individuals can perform the installation within the given time, each member working 1/3 of the given hours. [Eg. Installation Time = 30 hours. For a crew of three, each member will work 10 hours on the installation for a total of 30 hours on the project.]

Carbon Footprint

The CO2e (carbon footprint given in Kilograms and Metric Tons) listed above is a measure of the environmental impact this play structure represents from harvesting raw materials to the time it leaves our shipping dock. Playworld Systems nurtures a total corporate culture that is focused on eliminating carbon producing processes and products, reducing our use of precious raw materials, reusing materials whenever possible and recycling materials at every opportunity. Playworld Systems elected to adopt the Publicly Available Specification; PAS 2050 as published by the British Standards Institute and sponsored by Defra and the Carbon Trust. The PAS 2050 has gained international acceptance as a specification that measures the greenhouse gas emissions in services and goods throughout their entire life cycle.

Pre-Consumer Recycle Content

A measurement, in pounds, that qualifies the amount of material that was captured as waste and diverted from landfill during an initial manufacturing process and is being redirected to a separate manufacturing process to become a different product. E.g. 100% of our Aluminum Tubing is made from captured waste material during the manufacturing process of extruded Aluminum products such as rods, flat bars and H-channels.

Post-Consumer Recycle Content

A measurement, in pounds, that qualifies the amount of material that was once another product that has completed its lifecycle and has been diverted from a landfill as a solid waste through recycling and is now being used in a Playworld Systems' product. E.g. **20% to 40% of the steel in our steel tubing and sheet steel have been diverted from landfills. Automobiles are scrapped and recyclable steel is purchased by the steel mill that produces our raw product.

** The amount of Post-Consumer recycled steel fluctuates daily based on the availability of the recycled steel.

