

Colma Creek Trash Capture

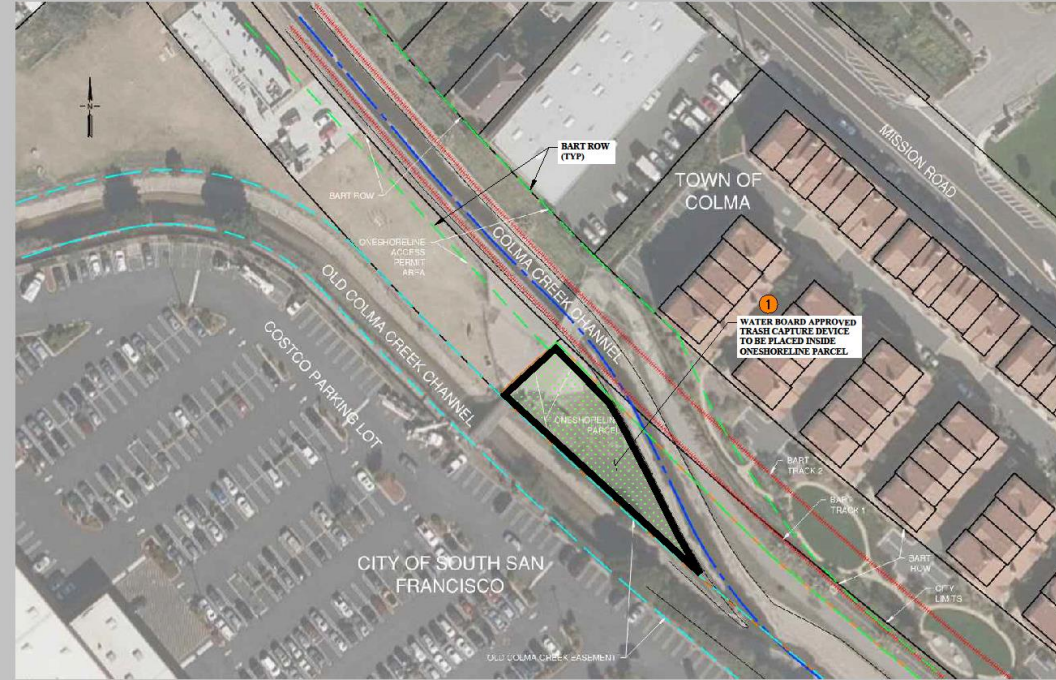
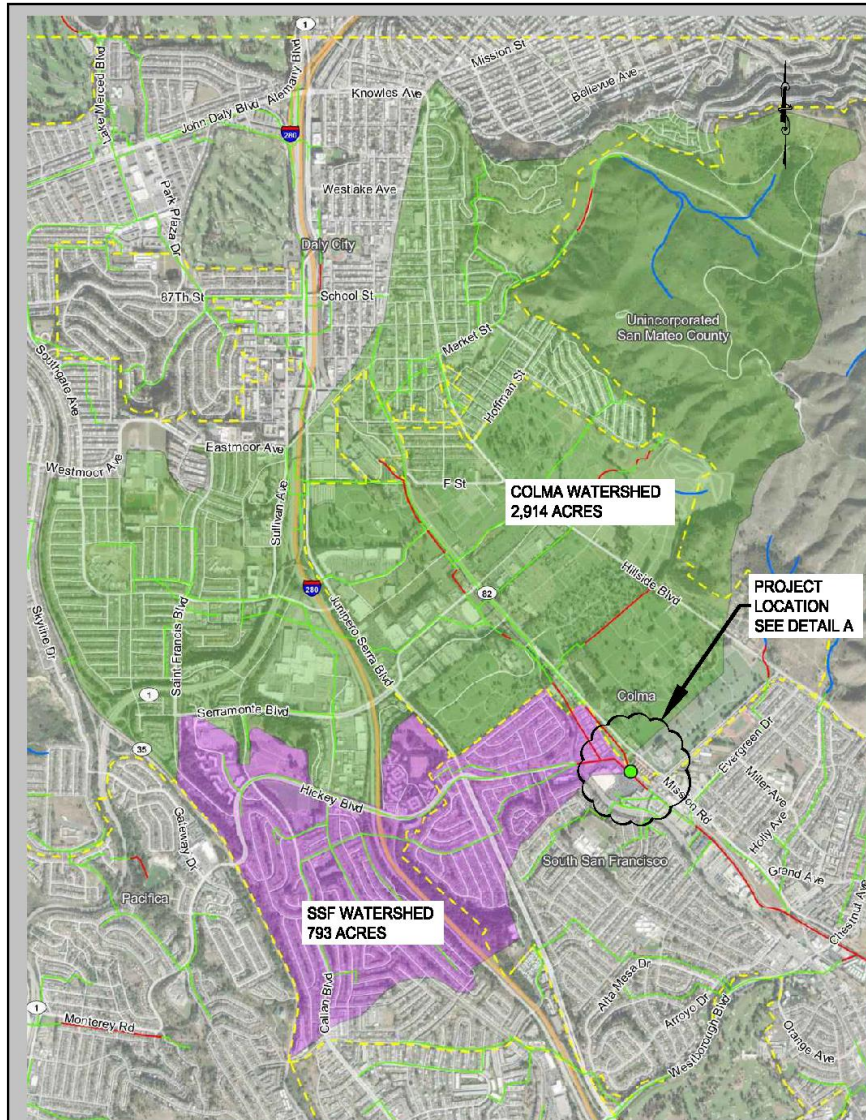
Pre-Proposal Meeting

July 2, 2024

Agenda

1. Introductions
2. Project Background
3. Scope of Work
4. Questions

Project Location



DETAIL A

KEY DESIGN ELEMENTS		
No.	DESCRIPTION	DESIGN CONSIDERATIONS
1	TRASH CAPTURE SYSTEM	THE TRASH CAPTURE DEVICE NEEDS CERTIFICATION FROM THE STATE WATER RESOURCES CONTROL BOARD

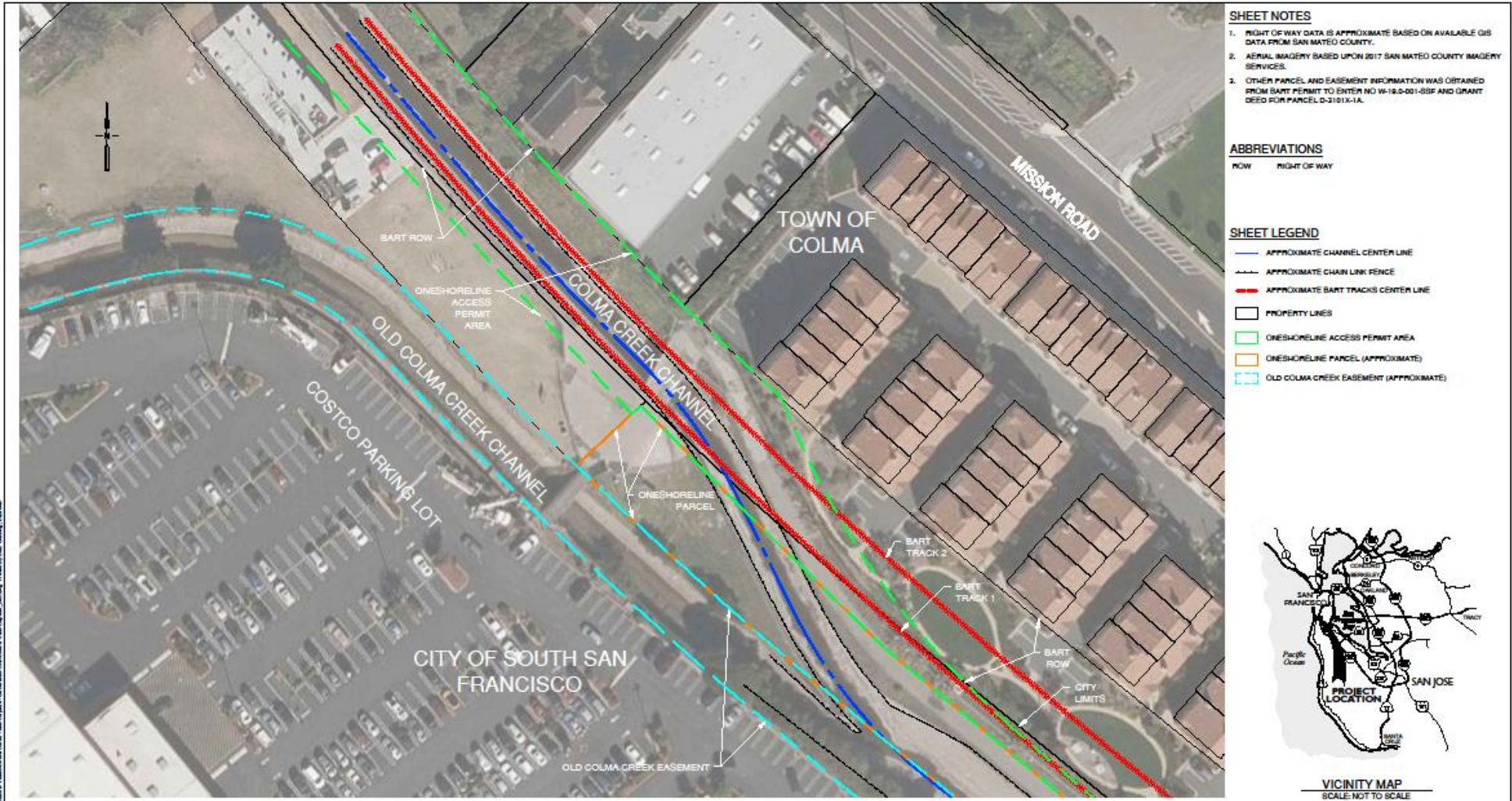
ATTACHMENT A COLMA CREEK TRASH CAPTURE DEVICE PROJECT



Background

- San Francisco Regional Water Quality Board MRP 3.0 requires 100% Stormwater Trash Capture by June 2025
- Town of Colma Received \$7.04M grant from Caltrans to construct trash capture system in Colma Creek
- Colma Creek operated by One Shoreline
- Multi-agency project – Colma, Daly City, South San Francisco, San Mateo County, One Shoreline
- Treat approx. 2,914 acres in Colma Creek watershed (trash only) and approx. 793 acres in Old Colma Creek watershed (Trash and sediment)

Project Location



SHEET NOTES

1. RIGHT OF WAY DATA IS APPROXIMATE BASED ON AVAILABLE GIS DATA FROM SAN MATEO COUNTY.
2. AERIAL IMAGERY BASED UPON 2017 SAN MATEO COUNTY IMAGERY SERVICES.
3. OTHER PARCEL AND EASEMENT INFORMATION WAS OBTAINED FROM BART PERMIT TO ENTER NO W-18-0-001-03F AND GRANT DEED FOR PARCEL D-3101X-1A.

ABBREVIATIONS

ROW RIGHT OF WAY

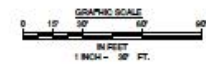
SHEET LEGEND

- APPROXIMATE CHANNEL CENTER LINE
- - - APPROXIMATE CHAIN LINK FENCE
- APPROXIMATE BART TRACKS CENTER LINE
- PROPERTY LINES
- ONESHORELINE ACCESS PERMIT AREA
- ONESHORELINE PARCEL (APPROXIMATE)
- OLD COLMA CREEK EASEMENT (APPROXIMATE)



VICINITY MAP
SCALE: NOT TO SCALE

LAYOUT PLAN
SCALE: 1" = 20'



SHEET NO. 000001 OF 000001 - COLMA CREEK TRASH CAPTURE PROJECT - CIVIL ENGINEERING - 2023 - 12 - 01
 PROJECT LOCATION: 1190 EL CAMINO REAL, COLMA, CA 94014
 DRAWN BY: L. DIAZ-GUNNING
 CHECKED BY: [REDACTED]
 DATE: 12/01/2023

NO.	REVISION	DATE	BY	APP.

DRAWN: L. DIAZ-GUNNING
 DESIGNED: N/A
 CHECKED: [REDACTED]
TOWN OF COLMA
 1190 EL CAMINO REAL, COLMA, CA 94014



COLMA, CALIFORNIA	DATE: DECEMBER 2023
COLMA CREEK TRASH CAPTURE	SCALE: AS SHOWN
BASEMAP EXHIBIT	SHEET: 1 OF 1 SHEETS

Scope of Work

- Evaluate trash capture device options (both watershed) and sediment removal options (Old Colma Creek watershed)
- Perform hydraulic analysis of impacts of installing trash capture and sediment removal devices to channel capacity (hydraulic model of Colma Creek will be provided)
- Evaluate alternatives and expected capital and ongoing maintenance costs
- Recommend preferred alternative
- Perform environmental analysis for both CEQA and NEPA clearance

Scope of Work (continued)

- Complete 30%, 60%, 95%, and Bid Package design documents (plans, specifications, and estimates)
- Provide bid period and construction period engineering support

General Information

- Proposals Due July 12, 2024 at 2 PM Pacific Time
- Addendum No. 1 issued on June 21, 2024
- Any issues with Town Professional Services Agreement should be included in Proposal
- Contract award tentatively scheduled for August 28, 2024

Questions?

