



OPEN SPACE / CONSERVATION ELEMENT

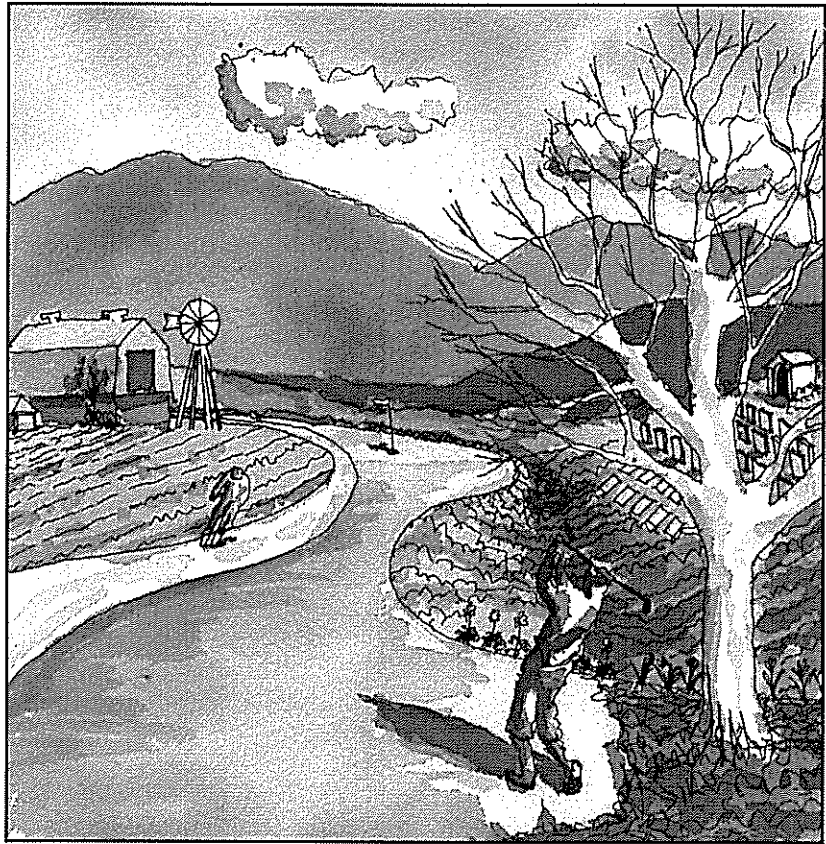


TABLE OF CONTENTS

5.04.000	INTRODUCTION	5.04.3
5.04.010	Purpose	5.04.3
5.04.020	Relation to other General Plan Elements	5.04.3
5.04.030	Objectives and Goals	5.04.4
5.04.040	How the Open Space Designation is Used	5.04.4
5.04.100	INVENTORY OF PLANNING FACTORS	5.04.4
5.04.110	Existing Open Space Inventory	5.04.4
5.04.120	Open Space Resources in the Plan	5.04.5
5.04.121	Colma Creek	5.04.5
5.04.122	Cemetery Lands	5.04.5
5.04.123	Hillside Landfill	5.04.5
5.04.124	Golf Course	5.04.6
5.04.125	Agricultural Lands	5.04.7
5.04.126	Vacant Sites	5.04.7
5.04.200	CONSERVATION	5.04.8
5.04.210	Influences of Natural and Man-Made Features	5.04.8
5.04.211	Climate	5.04.8
5.04.212	Flooding	5.04.10
5.04.213	Air Quality	5.04.10
5.04.214	Groundwater	5.04.10

5.04.215	Public Water Supply	5.04.11
5.04.216	Soil and Mineral Resources	5.04.11
5.04.217	Vegetation	5.04.11
5.04.218	Wildlife Species	5.04.13
5.04.219	Endangered, Threatened and Sensitive Species	5.04.13
5.04.220	Public Recreation and Community Open Space	5.04.14
5.04.221	Regional Recreation	5.04.14
5.04.222	Public Recreation and Community Meeting Facilities	5.04.15
5.04.223	Future Park and Recreation Opportunities	5.04.15

5.04.300 OPEN SPACE AND CONSERVATION POLICES 5.04.16

5.04.310	Water and Air Resources	5.04.16
5.04.320	Colma Creek	5.04.16
5.04.330	Vegetation and Project Landscaping	5.04.17
5.04.340	Flooding	5.04.17
5.04.350	Memorial Parks	5.04.18
5.04.360	Town Identity	5.04.19
5.04.370	Cypress Hill Property	5.04.20
5.04.380	Threatened and Endangered Species	5.04.20
5.04.390	Public Parks and Recreation	5.04.20

5.04.400 OPEN SPACE AND CONSERVATION ACTION PROGRAMS 5.04.21

5.04.410	California Environmental Quality Act Procedures	5.04.21
5.04.420	Zoning Ordinance	5.04.21
5.04.430	Subdivision Ordinance	5.04.21
5.04.440	Tree Removal Ordinance	5.04.22
5.04.450	Grading Ordinance	5.04.22
5.04.460	Community Meeting Hall and Public Parks Facilities	5.04.22

TABLES

OS-1	Inventory of Existing Open Space Lands	5.04.7
OS-2	Plant List for Colma	5.04.8
OS-3	Showy Flower Selections for Colma	5.04.9
OS-4	Public Parks Facilities	5.04.14

EXHIBITS

OS-1	Open Space/Conservation Map	5.04.23
OS-2	Sterling Park Open Space	5.04.25