



Town of Colma Recreation Services Department

Steering Park Recreation Center

Parks
Make
Life
Better!



ANIMAL PLANET AUGUST 13 TO AUGUST 17



MONDAY

HAND PRINT

ANIMAL ART

Animal Charades



TUESDAY

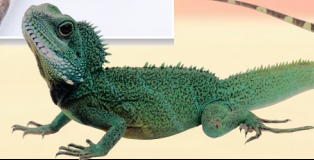
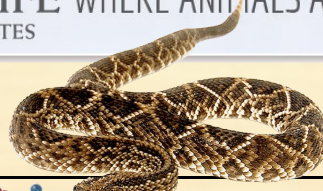
BIRDFEEDER
CRAFT

CRAB
SOCCER



WEDNESDAY

WildLIFE WHERE ANIMALS ARE THE TEACHERS
ASSOCIATES



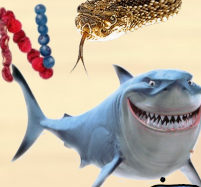
THURSDAY

NUTRITION
with Pat

SHARK TAG



GABRIEL



FRIDAY

BOWLING
@ SEA BOWL

Arrive to Camp by: 11:00am
Return by: 4:30pm

What to Bring...

- Camp Shirt
- Walking Shoes
- Bagged Lunch
- \$3 for pizza and juice



Note: Camp hours are 10am to 4pm (8am-6pm with extended care hours). Please contact Day Camp staff for questions regarding daily schedules and off-site field trips. All campers must have a completed Health Form before drop off on their first day of camp. Campers should bring a bagged lunch with a drink and snack everyday unless noted on schedules. Please send your child to camp with a jacket, close toed shoes and suitable play clothing. Thank you!

You may contact day camp staff at 650-991-3213. In case of emergency, call the Colma Community Center at 650-985-5678 and your message will be forwarded to Day Camp staff.