



KIESEL+DESIGN
Kiesel Landscape
Architecture Inc.
422 E Main Street
Ventura, CA 93001
(805) 647-0730
jackson@kiesel-design.com
CLA 5276

RC #941
Raising Cane's Colima
123 Colima Blvd, Colima, CA 94014

Submittals:
DATE NAME
1 9.8.22 CUP Submittal
2 11.2.22 CUP Resubmittal
3 1.10.23 CUP Resubmittal



-Type-Conceptual-

Initial Setup Date:
Aug 17, 2022

Drawn By: NAME Y. Zhang
DATE 123

© 2022 Kiesel Landscape, Inc. All rights reserved. No part of this document may be reproduced without written permission from Kiesel Landscape, Inc. or its affiliates. This document is the property of Kiesel Landscape, Inc. and is intended for the use of the client only.

Title:
Conceptual Landscape Plan

Sheet Number:

Common Name	Size	Qty	Mature Height	Width	WUCOLS
Marina Strawberry Tree	36" box	3	15 - 35 ft.	20 - 25 ft.	Low
Western Redbud	24" box	7	15 - 20 ft.	15 - 20 ft.	Low
Little Olive	15 gal	88	6 - 8 ft.	4 - 5 ft.	Low
Dwarf Weidman Hawthorn	15 gal	39	3 - 5 ft.	3 - 4 ft.	Low
Yarrow	1 gal	118	1 - 2 ft.	2 - 3 ft.	Low
El Campo Small Cape Rush	5 gal	57	2 - 3 ft.	3 - 4 ft.	Low
Little Red Flax Lily	5 gal	15	2 - 3 ft.	1 - 2 ft.	Low
Whale's Tongue Agave	15 gal	5	3 - 4 ft.	3 - 4 ft.	Low
Stained Glass Octopus Agave	15 gal	6	4'-5"	4'-5"	Low
Arabian Aloe	15 gal	17	2'0"	3'0"	Low
European Grey Sedge	1 gal	13	24 - 30 in.	24 - 30 in.	Low
Variiegated Dwarf Mar. Rush	5 gal	25	2-3 ft.	2-3 ft.	Low
Deer Grass	5 gal	8	3 - 5 ft.	36 in - 4 ft.	Low
Total		400			

Plant List: (MFS)

Common Name	Symbol	Botanical Name
Trees	(Symbol)	Albizia x 'Marina' (mabi)
Shrubs	(Symbol)	Cercis occidentalis (Siz)
Perennials	(Symbol)	Olea europaea
Perennials	(Symbol)	Pharbitis umbellata 'Minor'
Perennials	(Symbol)	Achillea 'Moonshine'
Perennials	(Symbol)	Chorizanthe 'El Campo'
Perennials	(Symbol)	Barbella revoluta 'Little Red'
Succulents	(Symbol)	Agave ovalifolia
Succulents	(Symbol)	Agave villosoyana 'Stained Glass'
Succulents	(Symbol)	Aloë arborescens
Grasses	(Symbol)	Carex divisa
Grasses	(Symbol)	Lomandra longifolia 'Platinum Beauty'
Grasses	(Symbol)	Muhlenbergia rigens
Grasses	(Symbol)	European Grey Sedge
Grasses	(Symbol)	Variiegated Dwarf Mar. Rush
Grasses	(Symbol)	Deer Grass
Grasses	(Symbol)	NOT A PART

Materials Legend

(Symbol)	Wing Cobble® Smoothed Grey 10C - 5lb integral colored concrete
(Symbol)	W/3/8" Finish: TOPCAST @ #05
(Symbol)	Medium bedded concrete W/ 3/8" sawcut joints. Finish: TOPCAST @ #05
(Symbol)	*Crushed Stone Supplier: Southwest Boulder & Stone (714) 882-1010
(Symbol)	*Integral Colored Concrete Supplier: Direct Colors https://www.directcolors.com/
(Symbol)	NOT A PART (existing landscape to remain)

Existing Notes

- A (E) Hawthorn tree
- B (E) Flare tree
- C (E) planting to remain
- D (E) Hawthorn tree to be removed
- E (E) Flare tree to be removed

Proposed Notes

- 1 (P) patio furniture per Architect
- 2 (P) trash enclosure per Architect
- 3 (P) overhead structure per Architect
- 4 (P) menu order board per Architect
- 5 (P) bike storage per Architect
- 6 (P) bike rack per Architect
- 7 (P) bike rack per Architect
- 8 (P) bike rack per Architect
- 9 (P) bike rack per Architect
- 10 (P) bike rack per Architect

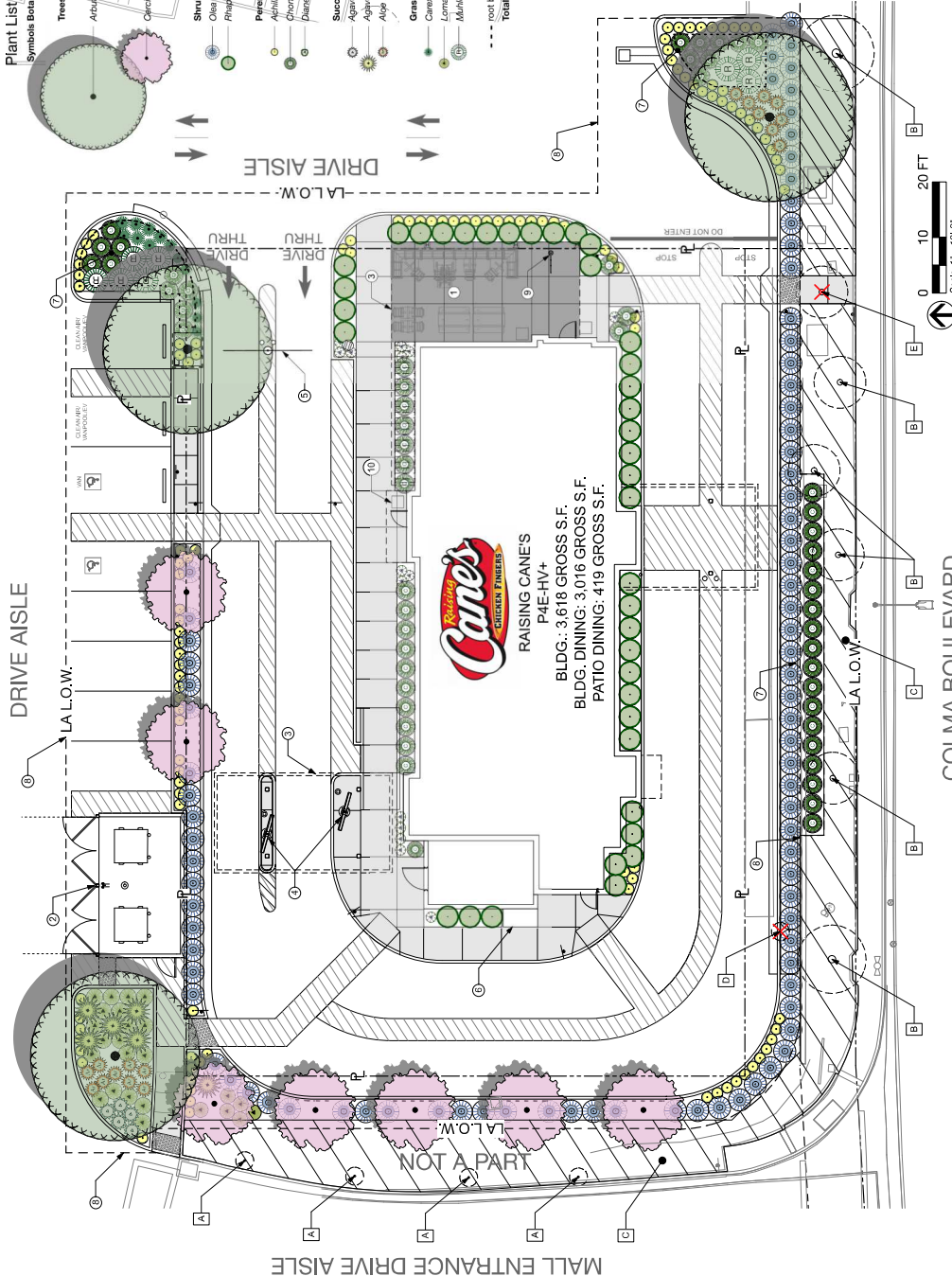
Total Landscape Area: 3,953 SF

Project Type: Commercial

Water Supply: Potable

Irrigation Notes

- Landscape Plan is in compliance with the State Model Efficiency Landscape Plan and the State Model Efficiency Landscape Plan and the State Model Efficiency Landscape Plan.
- The design of the irrigation system shall conform to the hydromechanical design plan.
- A dedicated water meter shall be provided for common landscape area.
- "Smart controller" shall be utilized. Controller shall be programmed to water in early morning or night.
- A rain sensor shall be installed at each controller.
- Water flow calculator shall verify conformances with the current requirements.
- Trees are to be irrigated by bubbler.



Planting Notes

- Important note: All plant materials shall be set out as shown on plan. Final locations shall be approved by the Landscape Architect prior to planting.**
- Prior to starting work, Contractor shall take representative soil samples from the project site. Soil shall be analyzed by an approved commercial soil testing laboratory for suitability for the proposed plant materials. Contractor shall provide a copy of the soil test results to the Landscape Architect. Contractor shall be responsible for the cost of the soil test. Contractor shall be responsible for the cost of the soil test.
 - Contractor shall clear and grub all planting areas, removing all weed growth and construction debris, prior to installation of plant materials.
 - All plants are identified by typical symbols and quantities in each area. Plant quantities indicated on the plan are approximate and are provided for the convenience of the contractor. Contractor shall be responsible for the quantity of plants to be installed. Contractor shall be responsible for the quantity of plants to be installed.
 - As noted above, all plant materials shall be set out as shown on plan by Contractor for approval by Landscape Architect. Landscape Architect shall inspect Contractor layout prior to actual plant installation. Landscape Architect shall be given 48 hours notice to inspect Contractor layout prior to final plant installation.
 - Contractor shall provide and install 3" of charcoal brown mulch in all planted areas unless otherwise noted. Mulch to match existing center and shall be spread evenly. Contractor shall provide Landscape Architect with samples of mulch for approval prior to installation.
 - Linear Root Barriers shall be provided for all trees 5' or closer to paving and curbs.
 - All (E) trees to remain unless otherwise noted.

Abbreviations

APPROX.	approximate
D	diameter
DIA.	diameter
Exc.	excavation
H	height
MAX.	maximum
MIN.	minimum
L.O.W.	limit of work
O.C.	on center
P	proposed
SP	square foot
TEVF	to be verified in field
TYP.	typical
W	width
GPM	gallons per minute