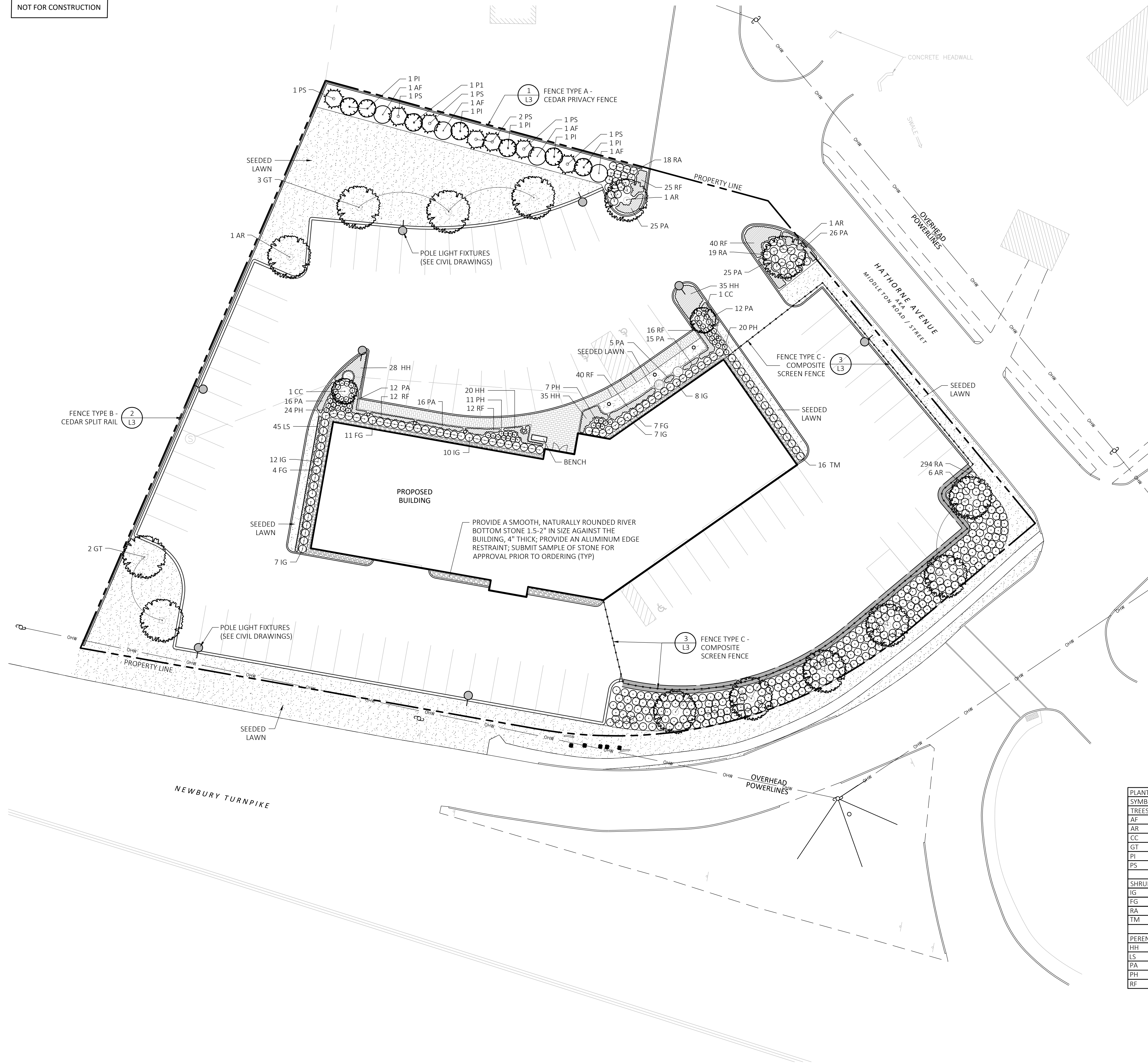


NOT FOR CONSTRUCTION



**PLANTING:**

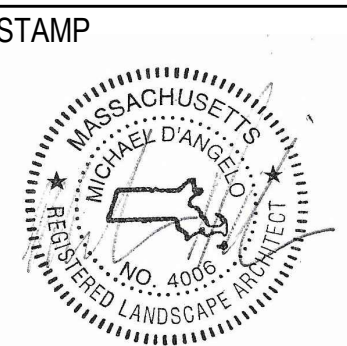
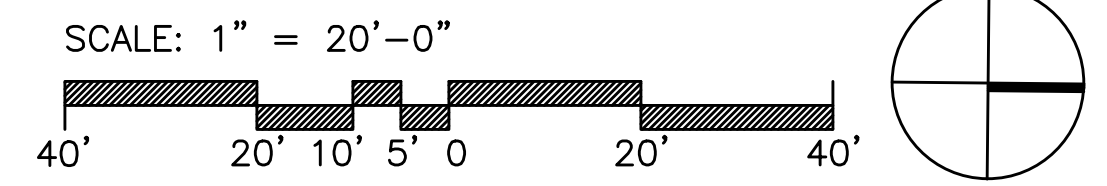
- DURING CONSTRUCTION, PROTECT ALL EXISTING SITE FEATURES, STRUCTURES AND UTILITIES.
- PLANTS SHALL BE TRUE TO SPECIES AND VARIETY SPECIFIED AND NURSERY GROWN IN ACCORDANCE WITH THE AMERICAN STANDARD FOR NURSERY STOCK UNDER CLIMATIC CONDITIONS SIMILAR TO THOSE IN THE LOCALITY OF THE PROJECT. SUBSTITUTIONS WILL BE PERMITTED ONLY IF APPROVED BY THE LANDSCAPE ARCHITECT.
- LANDSCAPE ARCHITECT APPROVAL IS REQUIRED BEFORE PLANT MATERIAL IS PURCHASED. LANDSCAPE ARCHITECT RESERVES THE RIGHT TO SEE ALL MATERIAL IN PERSON AT THE NURSERY. IF TRAVEL OUTSIDE OF MA IS REQUIRED, LANDSCAPE ARCHITECT'S TRAVEL COSTS SHALL BE PAID FOR BY THE CONTRACTOR.
- ALL EXPOSED BURLAP, WIRE BASKETS AND OTHER MATERIALS ATTACHED TO PLANTS SHALL BE REMOVED PRIOR TO PLANTING. CARE SHALL BE TAKEN NOT TO DISTURB THE ROOT BALL OF PLANTS.
- THOROUGHLY WATER ALL PLANTS IMMEDIATELY AFTER PLANTING.
- WHERE DISCREPANCIES IN QUANTITIES OCCUR, DRAWINGS SUPERCEDE PLANT NOTES AND SCHEDULE.
- TRANSPLANTING SHALL BE DONE IN ACCORDANCE WITH THE AMERICAN STANDARD FOR NURSERY STOCK.
- LOAM USED IN PLANT BEDS SHALL BE UNIFORM IN COMPOSITION, FREE FROM SUBSOIL, STONES LARGER THAN 1", NOXIOUS SEEDS AND SUITABLE FOR THE SUPPORT OF VEGETATIVE GROWTH. THE pH VALUE SHALL BE BETWEEN 5.5 AND 6.5.
- MULCH IN TREE AND SHRUB BEDS SHALL BE NATURAL, NATIVE HEMLOCK MULCH FREE OF GROWTH OR GERMINATION INHIBITING INGREDIENTS. SUBMIT SAMPLES FOR APPROVAL.
- LOCATIONS FOR PLANTS AND/OR OUTLINE OF AREAS TO BE PLANTED ARE TO BE STAKED OUT AT THE SITE FOR APPROVAL BY THE LANDSCAPE ARCHITECT.
- SOIL DEPTHS: a.) SHRUBS AND PERENNIAL BEDS: 18" MIN.; b.) GROUNDCOVER: 6" MIN.; c.) TREES: SEE DETAIL; d.) SOD/SEED: 6" MIN.
- PROVIDE A SUBSURFACE ROOTBALL ANCHOR BY PLATIPUS EARTH ANCHORS, SIZE FOR CALIPER

**GENERAL IRRIGATION NOTES:**

- THE DESIGN/BUILD IRRIGATION SUB-CONTRACTOR SHALL PROVIDE A COMPLETE SYSTEM FOR THE IRRIGATION AREAS SHOWN ON THE PLAN, WHICH INCLUDES NEW AND EXISTING TRANSPLANTED PLANT MATERIALS. CONTRACTOR SHALL SUBMIT SHOP DRAWINGS FOR FINAL LAYOUT OF IRRIGATION SHOWING LOCATIONS AND SIZES OF MAIN LINES AND LATERAL LINES, ZONES, RAIN AND SOIL SENSORS, AND CUT SHEETS FOR CONTROLLER SYSTEM AND COMPONENTS. INCLUDE ANY NECESSARY SLEEVING ON A DIAGRAM.
- IRRIGATION TO BE COORDINATED WITH GENERAL CONTRACTOR TO LOCATE THE NECESSARY PVC SLEEVING TO COMPLETE IRRIGATION PROGRAM.
- IRRIGATION CONTRACTOR SHALL VERIFY PSI/GPM REQUIREMENTS AT THE SITE BEFORE STARTING CONSTRUCTION.
- TREES SHOULD BE ON A SEPARATE ZONE.
- ALL TREES, SHRUBS, PERENNIALS, ORNAMENTAL GRASSES, AND GROUNDCOVER SHALL BE DRIP IRRIGATED. CONTRACTOR SHALL BE AWARE THAT THE IRRIGATION SYSTEM SHALL BE ROUTED TO THE PYLON SIGN PLANTER AND PLANTERS AT THE BUILDING.
- ALL LAWN AREAS SHALL BE SPRAY HEAD IRRIGATED. THE HEADS SHALL BE LOCATED FOR HEAD TO HEAD COVERAGE WITH ABSOLUTELY NO OVER SPRAY ONTO THE PAVEMENT.
- INSTALL DRIP TUBING, .6GPH, 12" CENTERS, STAKED EVERY TURN OR EVERY 4'
- THE CONTRACTOR SHALL BE EXTREMELY CAREFUL DURING THE INSTALLATION PROCESS NOT TO DISTURB NEW OR EXISTING PLANT MATERIALS. THE CONTRACTOR IS TO COORDINATE HIS WORK WITH OTHER SUB-CONTRACTORS.
- THE IRRIGATION CONTRACTOR SHALL CONFORM TO ANY LOCAL CODES OR ORDINANCES THAT MAY BE REQUIRED TO COMPLETE THE WORK.
- WATER SUPPLY AND CONTROLLER: COORDINATE CONNECTION TO WATER SUPPLY WITH GENERAL CONTRACTOR. COORDINATE CONTROLLER LOCATION WITH GENERAL CONTRACTOR.
- MEP CONTRACTOR TO PROVIDE BACK FLOW PREVENTION.
- THE IRRIGATION CONTRACTOR SHALL TEST WATER SOURCE FOR WATER QUALITY INCLUDING MINERALS THAT MAY CAUSE STAINING OF CONCRETE AND PAVING SURFACES.
- INSTALLER SHALL INSTALL MOISTURE SENSORS. CONTRACTOR SHALL INSTALL PER MANUFACTURERS'S SPECIFICATIONS AND SHALL BE RESPONSIBLE TO PROGRAM RELATED HYDROZONES TO RESPECTIVE SOIL MOISTURE SENSORS. PROVIDE ONE FOR EACH IRRIGATION ZONE WITH AUTOMATIC SHUT-OFF ONCE MOISTURE REQUIREMENTS ARE MET.

PLANT SCHEDULE					
SYMBOL	QTY.	LATIN NAME	COMMON NAME	SIZE	NOTES
<b>TREES</b>					
AF	4	ABIES FRASERI	FRASIER FIR	6-8' HT.	B&B
AR	9	ACER RUBRUM 'RED SUNSET'	RED SUNSET MAPLE	3"-3.5" CAL.	B&B, 6' CLEAR BRANCHING
CC	2	CERCIS CANADENSIS	EASTERN REDBUD	8-10' TALL	B&B, MULTI-STEM
GT	5	GLEDITSIA TRICANTHOS 'SKYLINE'	SKYLINE HONEYLOCUST	3.5"-4" CAL.	B&B, 6' CLEAR BRANCHING
PI	6	PICEA ABIES	NORWAY SPRUCE	6-8' HT.	B&B
PS	7	PINUS STROBUS	EASTERN WHITE PINE	6-8' HT.	B&B
<b>SHRUBS AND GROUNDCOVER</b>					
IG	44	ILEX GLABRA 'SHAMROCK'	SHAMROCK INKBERRY	3' TALL	36" O.C. B&B
FG	22	FOTHERGILLA GARDENII	DWARF FOTHERGILLA	5 GAL	36" O.C. B&B
RA	294	RHUS 'GRO LOW'	GROW LOW SUMAC	5 GAL	36" O.C. B&B
TM	16	TAXUS X M. DENSIFORMIS	YEW	3' TALL	36" O.C. B&B
<b>PERENNIALS AND ORNAMENTAL GRASSES</b>					
HH	118	HEMEROCALLIS 'HAPPY RETURNS'	DAYLILLY	1 GAL	18" O.C. CONTAINER
LS	45	LIRIOPE SPICATA	CREeping LIRIOPE	1 GAL	15" O.C. CONTAINER
PA	152	PEROVSKIA A. 'LITTLE SPIRE'	LITTLE SPIRE RUSSIAN SAGE	1 GAL	18" O.C. CONTAINER
PH	62	PENNISSETUM A. 'HAMELIN'	HAMELIN FOUNTAIN GRASS	1 GAL	24" O.C. CONTAINER
RF	207	RUDBECKIA FULGIDA 'GOLDSTURM'	BLACK EYE SUSAN	1 GAL	18" O.C. CONTAINER

**1 PLANTING PLAN**  
SCALE: 1"=20'-0"



REV. NO.	DATE	DESCRIPTION

**FOR PERMIT  
PLANTING  
PLAN**

DRAWN	<b>L1</b>
CHECKED	
SCALE AS NOTED	
DATE 05/27/20	