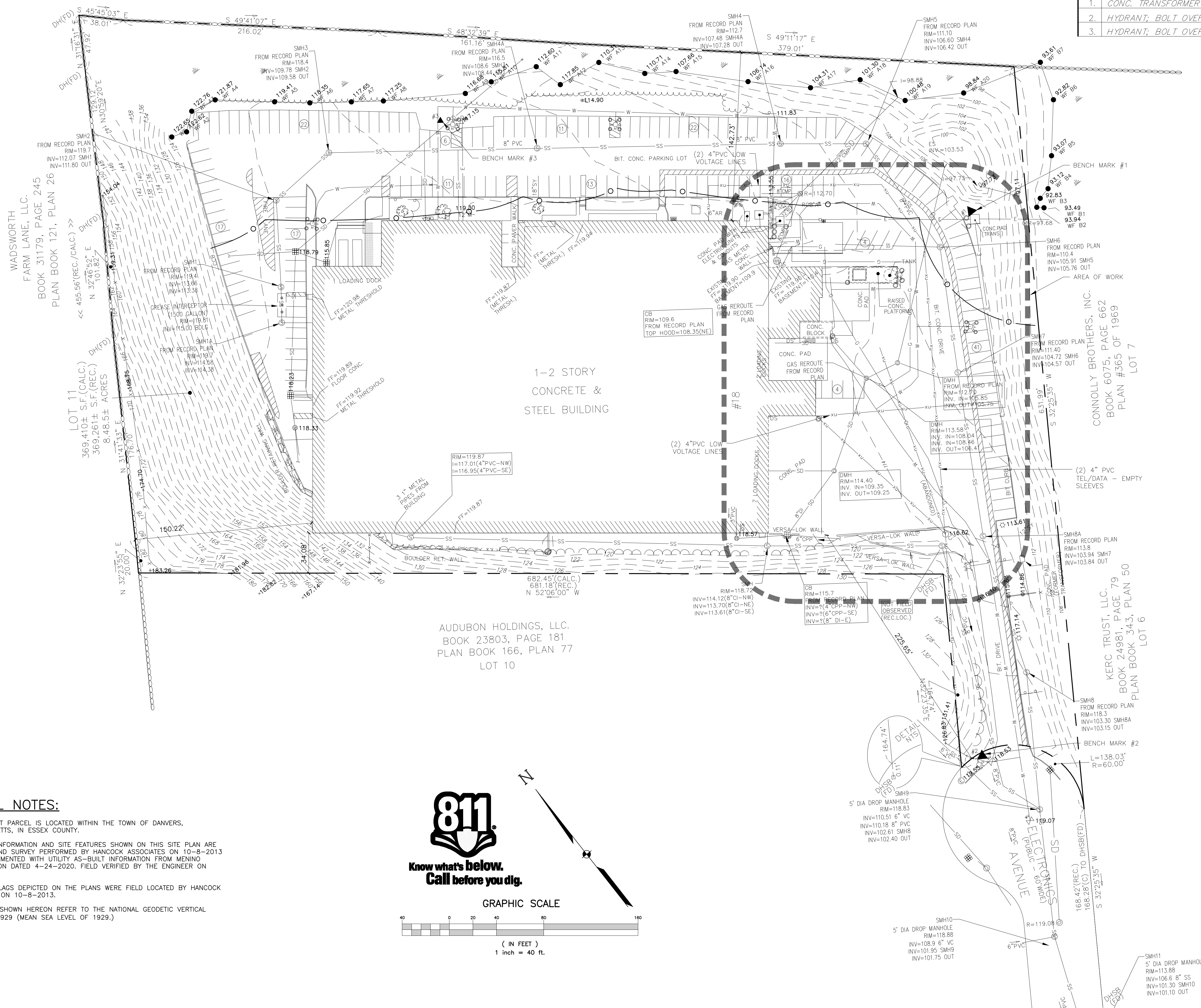


THIS DRAWING IS THE PROPERTY OF DESIGN GROUP FACILITY SOLUTIONS, INC. AND SHALL NOT BE REPRODUCED, COPIED, LENT OR ALTERED DIRECTLY OR INDIRECTLY NOR USED FOR ANY PURPOSE OTHER THAN THAT FOR WHICH IT IS SPECIFICALLY FURNISHED AND MUST BE RETURNED TO DESIGN GROUP FACILITY SOLUTIONS, INC. ON COMPLETION OF WORK, IF REQUESTED.

COMMONWEALTH OF MASSACHUSETTS
PLAN BOOK 393, PLAN 100
PLAN BOOK 394, PLAN 1

ELEVATION BENCH MARKS		
DATUM: N.G.V.D. OF 1929		
NO.	DESCRIPTION	ELEV.
1.	CONC. TRANSFORMER PAD; TOP N.E. CORNER	110.15
2.	HYDRANT; BOLT OVER MAIN OUTLET	121.20
3.	HYDRANT; BOLT OVER MAIN OUTLET	118.81



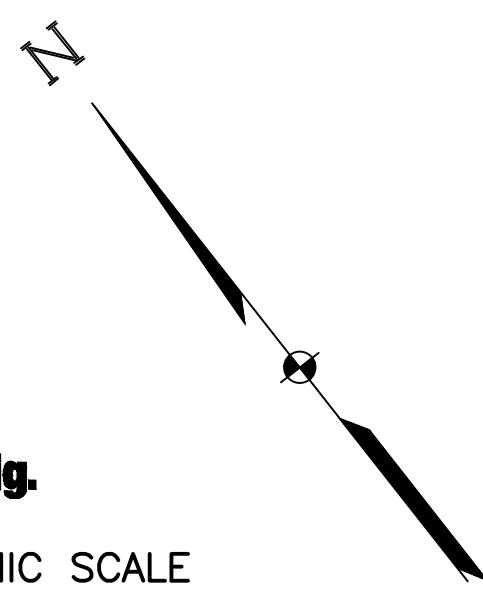
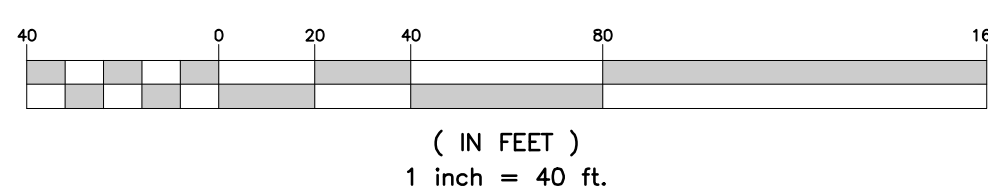
GENERAL NOTES:

- THE SUBJECT PARCEL IS LOCATED WITHIN THE TOWN OF DANVERS, MASSACHUSETTS, IN ESSEX COUNTY.
- BOUNDARY INFORMATION AND SITE FEATURES SHOWN ON THIS SITE PLAN ARE FROM GROUND SURVEY PERFORMED BY HANCOCK ASSOCIATES ON 10-8-2013 AND SUPPLEMENTED WITH UTILITY AS-BUILT INFORMATION FROM MENINO CONSTRUCTION DATED 4-24-2020. FIELD VERIFIED BY THE ENGINEER ON 4-28-2020.
- WETLANDS FLAGS DEPICTED ON THE PLANS WERE FIELD LOCATED BY HANCOCK ASSOCIATES ON 10-8-2013.
- ELEVATIONS SHOWN HEREON REFER TO THE NATIONAL GEODETIC VERTICAL DATUM OF 1929 (MEAN SEA LEVEL OF 1929.)



Know what's below.
Call before you dig.

GRAPHIC SCALE

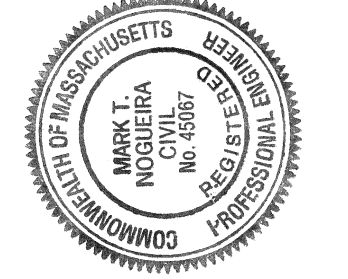


Design Group
DESIGN GROUP FACILITY SOLUTIONS, INC.
5 CHENELL DRIVE, BOX 3, CONCORD, NEW HAMPSHIRE 03301
PHONE: (603) 225-0010 FAX: (603) 225-0761

NO.	DATE	BY	REVISION
0	06/09/20	BAR/AM	SUBMITTED FOR PERMITTING



CLIENT: OLD NEIGHBORHOOD FOODS, INC.
LYNN, MA
PROJECT: LOADING DOCK EXPANSION
DANVERS, MA
DRAWING TITLE: EXISTING CONDITIONS PLAN



PROJECT NO. 2001673
ISSUED 06/09/2020
SCALE 1"=40'
DRAWN BY GAR
DRAWING NO.

CX1.00