

The Town of Danvers Traffic Rules & Orders

Adopted by the Select Board June 3, 1940, revised through January 19, 2021

Table of Contents

Article I. AUTHORITY & ADMINISTRATION.....	1
Section 1 Authority	1
Section 2 Jurisdiction.....	1
Section 3 Older Orders, Rules, and Regulations.....	1
Section 4 Severability	1
Section 5 Owner Prima Facie Responsible for Violations.....	1
Section 6 Definitions.....	1
Article II. AUTHORITY AND DUTIES OF THE POLICE DEPARTMENT.....	3
Section 1 Officers to Direct Traffic	3
Section 2 Police May Temporarily Close Streets	4
Section 3 Police May Temporarily Prohibit Parking.....	4
Section 4 Exemptions	4
Article III. TRAFFIC SIGNS, SIGNALS, MARKINGS, AND ZONES	4
Section 1 Obedience to Traffic Signs, Signals, and Markings	4
Section 2 Location of Bus Stops and Loading Zones	4
Section 3 Interface with Signs, Signals, and Markings Prohibited.....	4
Section 4 Traffic Signs and Signals	4
Section 5 Unauthorized Devices, Signs, Signals, and Markings Prohibited	5
Section 6 Emergency, Temporary, or Experimental Regulations.....	5
Section 7 Quiet Zones.....	5
Article IV. STOPPING, STANDING, & PARKING	6
Section 1 General Prohibitions	6
Section 2 Loading Zones	6
Section 3 Angled Parking	7
Section 4 Parking Vehicles for Sale Prohibited.....	7
Section 5 Parking Bans	7
Section 6 Overnight Parking.....	7
Section 7 Parking Prohibitions, Restrictions, and Limitations	8
Section 8 Prohibited at Safety Zones	8
Section 9 Bus Stops	8
Section 10 Accessible Parking Spaces.....	8
Section 11 One-Way Streets	9
Article V. VEHICLE OPERATIONS.....	9
Section 1 Rules of the Road.....	9
Section 2 Obstructing Traffic.....	9
Section 3 Following Too Closely	10

Section 4	Care in Starting, Stopping, Turning, and Backing.....	10
Section 5	Using Vehicle for Sale Purpose of Displaying Advertising Prohibited.....	10
Section 6	Prohibited and Mandatory Turning Movements.....	10
Section 7	Slow Vehicles to Stay 200 Feet Apart	12
Section 8	Obedience to Traffic Control Signals	12
Section 9	U-turns Prohibited.....	14
Section 10	Stop Signs & Yield Signs	14
Section 11	Keep to Right of Roadway Division.....	14
Section 12	Operation at Under or Overpasses and Intersections with Islands	15
Section 13	Driving on Road Surfaces Under Construction or Repair	15
Section 14	No Driving on Sidewalks.....	15
Section 15	No Driving Through Safety Zones	15
Section 16	Funerals to be Properly Identified.....	15
Section 17	Rights and Duties of Drivers in Funeral or Other Processions.....	15
Section 18	Sound Horn When Necessary	16
Section 19	Heavy Commercial Vehicle Operations	16
Section 20	Dropping or Leaking Loads.....	16
Section 21	Emerging from Alley or Private Driveway.....	17
Section 22	Placing of Structures or Property in Streets Prohibited	17
Section 23	Performance Guarantee May be Required for Using Streets.....	17
Section 24	Obstructing Traffic by Stopping, Loitering, or Sauntering.....	17
Section 25	Parades and Processions	18
<hr/>		
Article VI. CRASH REPORTS		18
Article VII. PENALTIES		18
Article VIII. SCHEDULES.....		21
Article IX. APPENDICES.....		44
Section 1	Right of Way Jurisdiction Map.....	44
Section 2	Town-owned Sites and Parking Areas.....	45

List of Tables

Table IV-1: Angled Parking Locations.....	7
Table IV-2: Accessible Parking Spaces.....	8
Table V-1: No Left Turn Locations.....	10
Table V-2: Left Lane Must Turn Left Locations.....	10
Table V-3: Right Lane Must Turn Right Locations.....	11
Table V-4: Prohibited Right on Red Locations.....	11
Table V-5: Other Turning Restrictions.....	11
Table V-6: Heavy Commercial Vehicle Exclusions.....	16
Table VII-1: Fine Schedule.....	18

List of Schedules

Schedule No. 1: Parking Locations and Regulations.....	21
Schedule No. 2: One-Way Streets.....	25
Schedule No. 3: Stop Sign Locations.....	26
Schedule No. 4: Yield Street Locations.....	37
Schedule No. 5: Prohibited Parking Locations.....	38

ARTICLE I. AUTHORITY & ADMINISTRATION

Section 1 Authority

As allowed under [G.L., c. 85, § 2](#), and [G.L., c. 40, § 22](#), the Select Board issues these *Traffic Rules and Orders* to express the allowable uses and expected behavior of [pedestrians](#), cyclists, automobiles, and trucks on Town-controlled [rights of way](#).

Section 2 Jurisdiction

These regulations pertain to all ways within the [Town](#), not under federal, state, or county authority. Appendix 1 of these regulations offers an illustrative map depicting the various jurisdictions within the [Town](#). This map is not a definitive resource on the nature of the ways and is amended by [Town](#) staff as new or more accurate information becomes available.

Section 3 Older Orders, Rules, and Regulations

All official [signs](#), lights, [markings](#), [signal systems](#), or other devices installed under older traffic rules or regulations and necessary for the enforcement of these regulations are deemed lawfully established under these regulations and continue under these regulations. However, in all other respects, all previous orders, rules, and regulations made by the [Town](#) are repealed.

Section 4 Severability

If any section, subsection, sentence, clause, or phrase of these regulations is deemed unlawful, such decisions do not affect the validity of the remaining portion of these regulations.

Section 5 Owner Prima Facie Responsible for Violations

No [person](#) may allow or permit any [vehicle](#) registered in their name, to stand or park in any way under the control of the [Town](#) in violation of any of these regulations.

Section 6 Definitions

The following words, terms, and phrases used in these regulations have the meanings given below, except when the context indicates a different connotation. Words, terms, and phrases used in the present tense include both past and future tenses. Words, terms, and phrases used in the singular include their plural forms. For ease of readability, these terms are highlighted throughout the document as hyperlinks. Whenever any word, term, or phrase used in these regulations is not defined in this document but are defined in the State laws regulating the operation of [vehicles](#), those definitions apply to such words, terms, or phrase.

Bus Stop: An area in the [roadway](#) set aside for the boarding or alighting from and the [parking](#) of buses.

Commercial Vehicle: Any vehicle used in the transportation of goods, wares, services, or merchandise for commercial purposes.

Commercial Vehicle, Heavy: Any commercial vehicle weighing two and one-half tons capacity or more.

Crosswalk: The portion of a roadway ordinarily included within the prolongation or connection of curb lines and property lines at intersections, or any part of a roadway indicated for pedestrian crossing by lines on the road surface or by other markings or signs.

Emergency Vehicles: Vehicles of the Fire Department, police vehicles, ambulances, and emergency vehicles of Federal, State, and Municipal Departments or public service corporations responding to an emergency.

Funeral: Any procession of mourners identified as such, accompanying the remains of a human body.

Lane: A longitudinal division of a roadway into a strip of enough width to accommodate the passage of a single line of vehicles.

Loading Zone: An area in the roadway set aside for the accommodation of commercial and transient vehicular traffic.

Official Street Marking: Any painted line, marking, or marker placed in or upon any way by the authority of the Select Board and which complies with the standards of the Massachusetts Department of Transportation.

Official Traffic Control Signal: Any signal conforming to the standards prescribed by the Massachusetts Department of Transportation, consistent with these regulations, placed or erected by authority of a public body or official having the authority to direct or warn traffic.

Official Traffic Signs: All signs, markings, and devices, other than signals, not inconsistent with these regulations, and which conform to the standards prescribed by the Massachusetts Department of Transportation and placed or posted by the authority of a public body or official having jurisdiction, to guide, direct, warn, or regulate traffic.

Officer: Any officer of the Police Department or any officer authorized to direct or regulate traffic or to make arrests for the violation of traffic regulations.

Parking: The standing of a vehicle, whether occupied or not, otherwise than temporarily for and while engaged in loading or unloading, or in obedience to an officer or traffic signs or signals, or while making emergency repairs, or if disabled, while arrangements are being made to move such vehicle.

Pedestrian: Any person afoot or riding on a conveyance moved by human power, except bicycles or tricycles.

Person: Means and includes any individual, firm, partnership, association, or corporation.

Right of Way: The entire width between property lines of every way open to the use of the public for purposes of travel.

Roadway: The portion of a right of way between the regular established curb lines or that part, exclusive of shoulders, improved and intended to be used for vehicular traffic.

Safety Zone: Any area within a roadway for the exclusive use of pedestrians and which has been indicated by signs, lines, or marking, having the written approval of the Massachusetts Department of Transportation.

Sidewalk: That portion of a right of way set aside for pedestrian travel.

Town: The Town of Danvers.

Traffic: Pedestrians, ridden or herded animals, vehicles, or other conveyances using any right of way for travel.

Traffic Island: Any area or space set aside within a roadway not intended for use by vehicular traffic.

Traffic Control Signal: Any device using colored lights which conforms to the standards prescribed by the Massachusetts Department of Transportation, whether manually, electrically, or mechanically operated, by which traffic may be alternately directed to stop and to proceed.

Transportation Advisory Commission: The Transportation Advisory Commission is a staff-run body that handles the day to day administration of the *Traffic Rules and Orders* for the Select Board.

U-turn: The turning of a vehicle using a continuous left-turn to reverse the direction of the vehicle.

Vehicle: Any device in, upon, or by which any person or property is or may be transported or drawn upon a right of way, except devices moved by human power or used exclusively upon stationary rails or tracks.

ARTICLE II. AUTHORITY AND DUTIES OF THE POLICE DEPARTMENT

Section 1 Officers to Direct Traffic

The Police Department enforces the provisions of these regulations. Officers are authorized to direct all traffic, either in person or utilizing visible or audible signals, in conformance with the provisions of these regulations, provided that in the event of a fire or other emergency to expedite traffic or safeguard pedestrians, Police or Fire Department officers may direct traffic, as conditions may require, notwithstanding the provisions of these regulations.

Section 2 Police May Temporarily Close Streets

The Police Department is authorized to temporarily close any right of way in an impending or existing emergency, or for any lawful assemblage, demonstration, or procession, provided there is a reasonable justification for closing such street.

Section 3 Police May Temporarily Prohibit Parking

The Police Department is authorized to temporarily prohibit parking on any right of way, or part of, in an impending or existing emergency, or for a lawful assemblage, demonstration, or procession, provided there is a reasonable justification for such prohibition. Vehicles parked in places where parking is temporarily prohibited may be moved by or under the direction of an officer.

Section 4 Exemptions

These regulations do not apply to operators engaged in work upon a right of way closed to travel or under construction repair, to officers involved in the performance of public duties, nor to drivers of emergency vehicles while operating in an emergency and execution of public duties when the nature of the work of any of these necessitates a departure from any part of these regulations. However, these exemptions do not protect the driver of any vehicle from the consequences of a reckless disregard of the safety of others.

ARTICLE III. TRAFFIC SIGNS, SIGNALS, MARKINGS, AND ZONES

Section 1 Obedience to Traffic Signs, Signals, and Markings

No driver of any vehicle may disobey the instructions of any official traffic control signal, sign, marking, marker, or legend unless directed otherwise by a police officer.

Section 2 Location of Bus Stops and Loading Zones

The location of all bus stops and loading zones are specified by the Select Board.

Section 3 Interface with Signs, Signals, and Markings Prohibited

Any person who willfully defaces, injures, moves, obstructs, or interferes with any official traffic sign, signal, or marking is liable to a penalty not exceeding twenty dollars for every offense.

Section 4 Traffic Signs and Signals

A. The Select Board is authorized, and to these signs and signals required hereunder, must place and maintain, or cause to be placed and maintained, all official traffic signs, signals,

markings, and safety zones. All signs, signals, markings, and safety zones must conform to the Massachusetts Department of Transportation standards.

- B. Sections relating to signs, signals, markings, and safety zones are valid only when official signs are posted and easily visible to approaching drivers.
- C. Sections relating to one-way streets are valid only during such time as enough official signs are posted and maintained at each of the exits for each one-way street so that at least one sign is visible at least seventy-five feet to drivers approaching such an exit.

Section 5 Unauthorized Devices, Signs, Signals, and Markings Prohibited

It is unlawful for any person to place or maintain or display upon or in view of any street, any unofficial sign, signal, marking, or device which purports to be or in imitation of or resembles an official traffic sign, signal, marking, or device, or which attempts to direct the movement of traffic or which hides from view any official sign or signal. The Town is empowered to remove any such sign, signal, marking, or device or cause it to be removed without notice.

Section 6 Emergency, Temporary, or Experimental Regulations

The Transportation Advisory Commission may make emergency, temporary, or experimental rules regulating traffic. Experimental rules may not be in effect for more than 30 days.

Section 7 Quiet Zones

- A. All the territory within two hundred feet of any hospital in the Town is established as a Quiet Zone. The Police Department is authorized to post and maintain conspicuously within this area any signs or markings necessary to demark it as a Quiet Zone.
- B. The Police Department may establish a temporary Quiet Zone upon any street where a person is seriously ill. Temporary Quiet Zones include all territory within two hundred feet. Temporary Quiet Zones are designated by the police placing a sign or marker in a conspicuous place in the street, bearing the words "Quiet Zone."
- C. No person operating a motor vehicle within any designated and signed Quiet Zone may sound the horn or other devices of the vehicle, except in an emergency.

ARTICLE IV. STOPPING, STANDING, & PARKING

Section 1 General Prohibitions

No person may park a vehicle in any of the following places. Vehicles found parked in violation of this section's provisions may be moved by or under the direction of an officer and at the owner's expense.

- A. Within an intersection.
- B. Upon a sidewalk.
- C. Upon any crosswalk.
- D. Upon a roadway where parking is permitted unless both wheels on the right side of the vehicle are within 12 inches of the curb or edge of the road, except upon one-way streets. On one-way streets, vehicles must be parked in the direction in which said vehicle is moving and with both wheels within 12 inches of the curb. This does not apply to streets or parts of streets, where these regulations require angled parking.
- E. Upon any roadway where the parking of a vehicle will not leave a clear unobstructed lane at least ten (10) feet wide for passing traffic.
- F. Upon any right of way within ten (10) feet of a fire hydrant.
- G. Upon or in front of any private road, driveway, or alleyway.
- H. Upon any right of way within twenty (20) feet of an intersection way or where signs indicating a greater distance have been posted.
- I. Within fifteen (15) feet of a fire station's wall or directly across the street from a fire station, provided signs are posted acquainting the driver of such restriction.
- J. Alongside or opposite any street excavation or obstruction when such stopping, standing, or parking would obstruct traffic.
- K. On a bridge and the approach to it.

Section 2 Loading Zones

No person may park a vehicle in any loading zone for longer than thirty minutes, except while engaged in loading or unloading.

Section 3 Angled Parking

A. Angled parking is permitted upon the streets or parts of streets, designated below, marked or signed for angled parking. Where such parking is permitted, vehicles must park with one wheel within twelve inches of the curb and at the angle to the curb indicated by such marks or official signs. The vehicle must be parked so that all of its wheels are wholly within the painted lines.

Table IV-1: Angled Parking Locations

Location	Side	From	To
Burroughs Street	N	2 Burroughs	2 Burroughs
Liberty Street	E	106 Liberty	112 Liberty
Maple Street, Parking Aisle	E	Central Avenue	Conant Street
Peabody Avenue	E	The Library's driveway opening	A point 260 feet south

Section 4 Parking Vehicles for Sale Prohibited

It is unlawful for any person to park upon a right of way any vehicle displayed for sale.

Section 5 Parking Bans

When a significant storm is forecast to impact the municipality, the Director of Public Works, in consultation with the Police Chief and Town Manager, may order a full parking ban, during which it is unlawful to park vehicles on any public street, or an overnight parking ban, when it is illegal to park vehicles on any street between the hours of 1:00 AM and 6:00 AM. Depending on the storm's intensity and duration, such bans may be applied to specific streets or geographic areas.

Section 6 Overnight Parking

Parking between the hours of 1:00 AM and 6:00 AM of any day is permitted on any street unless expressly prohibited in the list below or stated elsewhere in these regulations.

A. Overnight Parking Prohibitions.

No driver may park a tow truck, of any weight, or any commercial vehicle having a gross vehicle weight rating of more than fourteen thousand pounds of any type, between the hours of 1:00 AM and 6:00 AM.

Section 7 Parking Prohibitions, Restrictions, and Limitations

Parking may be prohibited, restricted, or limited as to time, space, and streets per the listings designated in **Schedule No. 1: Parking Locations and Regulations**, which is appended to these regulations and expressly incorporated into this section. No operator may park a vehicle in the designated prohibited locations or the restricted locations for a period longer than is specified in **Schedule No. 1: Parking Locations and Regulations**, except as otherwise provided in these regulations, or where there is a time limit as to parking. These restrictions do not apply on Sundays or during the hours of legal holidays.

Section 8 Prohibited at Safety Zones

No person may park a vehicle within twenty feet of either end of a safety zone, located within thirty (30) feet of the curb or edge of the roadway.

Section 9 Bus Stops

No person may park a vehicle other than a bus in a bus stop. No person may park a bus upon any street at any place other than at a bus stop.

Section 10 Accessible Parking Spaces

Table IV-2: Accessible Parking Spaces

Location	Side	Description
Alden Street	E	1 space, at the northern-most end of Alden
Burroughs Street	E	2 spaces, in front of 2 Burroughs
Central Avenue	S	1 space at the Franklin Street-end
Elm Street	N	1 space at the eastern-most end
Essex Street	E	1 space, near Elm Street
Franklin Street	W	1 space at the southern end, near Conant Street
Holten Street	S	2 spaces, adjacent to Town Hall
Maple Street	W	1 space, in front of 32 Maple Street
Maple Street	E	1 space, in front of 49 Maple Street
Maple Street, Parking Aisle	E	1 space at far southerly end
Page Street	E	1 space, fifty feet west of Elm Street

Peabody Avenue	E	2 spaces, one at each end of the angled parking area
Sylvan Street	S	1 space, at 12 Sylvan Street

Section 11 One-Way Streets

Vehicular traffic may move only in the direction indicated on the streets, or parts of streets, included in **Schedule No. 2: One-Way Streets**.

ARTICLE V. VEHICLE OPERATIONS

Section 1 Rules of the Road

To the extent practical, all rules of the road established in G.L. Chapter 89, Law of the Road, apply to and are incorporated into these regulations. In case of conflict between chapter 89 and these regulations, these regulations control. Chapter 89 establishes rules on:

- A. Driving on the right side of the roadway and staying in marked lanes,
- B. Passing other vehicles;
- C. Special provisions regarding pedestrians, bicycle lanes, motorcycles, heavy trucks;
- D. Yielding to and operation of emergency vehicles;
- E. Right-of-way at intersections and turning on red signals; and
- F. Establish one-way, through, yield, and stop streets

Section 2 Obstructing Traffic

- A. No person may drive in such a manner as to obstruct unnecessarily the normal movement of traffic upon any right of way. Officers are authorized to require any driver who fails to comply with this section to drive to the side of the roadway and wait until such traffic as has been delayed has passed.
- B. No driver may enter an intersection or a marked crosswalk unless there is sufficient space on the other side of the intersection or crosswalk and on the right half of the roadway to accommodate the vehicle he is operating without obstructing the passage of other vehicles or pedestrians, notwithstanding any traffic control signal indication to proceed.

Section 3 Following Too Closely

The driver of a vehicle may not follow another vehicle more closely than is reasonable and prudent, having due regard to the speed of such vehicle and the traffic upon and condition of the right of way.

Section 4 Care in Starting, Stopping, Turning, and Backing

Before starting, stopping, turning from a direct line, or backing up, the driver of any vehicle must first see that such a movement can be safely made. If the operation of another vehicle should be affected by a stopping or turning movement, the driver of such vehicle must be given a visible signal as required.

Section 5 Using Vehicle for Sale Purpose of Displaying Advertising Prohibited

No person may operate or park a vehicle on any right of way for the sole purpose of displaying advertising signs.

Section 6 Prohibited and Mandatory Turning Movements

Table V-1: No Left Turn Locations

Location	Direction	At	Description
Centre Street	SW Bound	Andover Street	No Left Turn
Conant Street	NE Bound	Poplar Street	No Left Turn
Maple Street, Parking Aisle	South Bound	Conant Street	No Left Turn
Poplar Street	W Bound	Maple Street	No Left Turn
Shawmut Avenue	SW Bound	Andover Street	No Left Turn

Table V-2: Left Lane Must Turn Left Locations

Location	Direction	At	Description
Elliott Street	Westbound	Liberty Street	Left Lane Must Turn Left
Elm Street	Eastbound	Maple Street	Left Lane Must Turn Left
Endicott Street	Eastbound	Chalet Court	Left Lane Must Turn Left
Endicott Street	Westbound	Chalet Court	Left Lane Must Turn Left
Endicott Street	Eastbound	Endicott Plaza	Left Lane Must Turn Left
Endicott Street	Westbound	Endicott Plaza	Left Lane Must Turn Left
High Street	Northbound	Elm Street	Left Lane Must Turn Left
Maple Street	Northbound	Elm Street	Left Lane Must Turn Left
Maple Street	Southbound	Locust Street	Left Lane Must Turn Left

Location	Direction	At	Description
Maple Street	Southbound	Conant Street	Left Lane Must Turn Left
Sylvan Street	Southbound	Endicott Street	Left Lane Must Turn Left
Sylvan Street	Southbound	Federal Street	Left Lane Must Turn Left
Sylvan Street	Northbound	Collins Street	Left Lane Must Turn Left
Water Street	Northbound	Endicott Street	Left Lane Must Turn Left

Table V-3: Right Lane Must Turn Right Locations

Location	Direction	At	Description
Conant Street	Westbound	High Street	Right Lane Must Turn Right
Locust Street	Westbound	Maple Street	Right Lane Must Turn Right
Stone Street	Eastbound	Martin Street	Right Lane Must Turn Right
Sylvan Street	Northbound	Endicott Street	Right Lane Must Turn Right

Table V-4: Prohibited Right on Red Locations

Location	Direction	At
Burley Farm Road	Southbound	Conant Street
Collins Street	Southeast bound	Sylvan Street
Elliot Street	Eastbound	Bridge Street
Elliott Street	Westbound	Liberty Street
Endicott Street	Northbound	Water Street
High, Liberty, Water, and River Streets	All Approaches	
Holten Street	Both	Pine Street
Locust Street	Both	Poplar Street
Maple, High, Elm, and Conant Streets	All Approaches	
Summer Street	Westbound	Maple Street

Table V-5: Other Turning Restrictions

Location	Direction	At	Description
Trask Way	North	Conant Street	DO NOT ENTER from 7:00 – 8:00 AM and from 1:30 – 2:30 PM – Monday through Friday during the school year.

Section 7 Slow Vehicles to Stay 200 Feet Apart

Upon roadways less than twenty-seven feet wide where vehicular traffic is permitted to operate in both directions, the driver of any slow-moving vehicle may not follow another slow-moving vehicle closer than two hundred feet. This does not prevent a slow-moving vehicle from passing another slow-moving vehicle. This section does not apply to funerals or other lawful processions. This rule applies to vehicles described in G.L. (Ter. ed.) c. 90, § 19.

Section 8 Obedience to Traffic Control Signals

Colors and arrow indications in traffic control signals have the commands ascribed to them in this section and no other meanings. Every driver of a vehicle or other conveyance must comply with them, except when otherwise directed by an officer or by a lawful traffic regulating sign (other than a "stop" sign), signal or device, except as provided in Section 18 of this Article, *Rights and Duties of Drivers in Funeral or Other Processions*.

In no case may a driver enter or proceed through an intersection without due regard to the safety of other persons within the intersection regardless of what indications the traffic control signals may give.

A. Green indications have the following meanings:

- (i) Vehicular traffic facing a STEADY CIRCULAR GREEN signal indication is permitted to proceed straight through or turn right or left or make a U-Turn unless such movement is modified by lane use signs, lane markings, roadway design, separate turn signal indications or other traffic control devices. Vehicular traffic turning right or left or making a U-Turn must yield to other vehicles, and to pedestrians lawfully within the intersection or an adjacent crosswalk, at the time such signal is exhibited.
- (ii) Vehicular traffic facing a STEADY GREEN ARROW signal indication displayed alone or in combination with another signal indication, may cautiously enter the intersection only to make the movement indicated by such arrow, or such other movements as is permitted by other indications displayed at the same time. Such drivers must yield to pedestrians lawfully within an adjacent crosswalk and to other traffic lawfully using the intersection.

B. Yellow indications have the following meanings:

- (i) Vehicular traffic facing a STEADY CIRCULAR YELLOW OR YELLOW ARROW signal is warned that the related green movement is being terminated or that a red indication will be exhibited immediately thereafter when drivers may not enter the intersection.

- (ii) Vehicular traffic facing a FLASHING CIRCULAR YELLOW (caution signal) may proceed through the intersection or pass such signal only with caution.
- (iii) Vehicular traffic on an approach to an intersection, facing a FLASHING YELLOW ARROW signal indication, displayed alone or in combination with another signal indication, is permitted to cautiously enter the intersection only to make the movement indicated by such arrow, or other such movement as is permitted by other signal indications displayed at the same time. Such vehicular traffic, including vehicles turning right or left or making a U-turn, must yield to:
 - a. Pedestrians lawfully within an associated crosswalk, and
 - b. Other vehicles lawfully within the intersection.

In addition, vehicular traffic turning left or making a U-turn to the left must yield to other vehicles approaching from the opposite direction so closely as to constitute an immediate hazard during the time when such turning vehicle is moving across or within the intersection.

C. Red indications have the following meanings:

- (i) Vehicular traffic facing a STEADY CIRCULAR RED AND NO TURN ON RED SIGN must stop at the marked stop line, but if none, before entering the crosswalk on the near side of the intersection, or if none, then before entering the intersection and remain standing until an indication to proceed is shown except as detailed below.
 - a) When no sign is in place prohibiting a right turn, or a left turn from a one way street to another one way street, drivers facing a steady circular red signal may cautiously enter the intersection to make the right turn, or left turn from a one way street to another one way street, after stopping as provided in (i) above. Such drivers must yield to pedestrians lawfully within an adjacent crosswalk and to other traffic lawfully using the intersection.
- (ii) Vehicular traffic facing a STEADY RED ARROW indication may not enter the intersection to make the movement indicated by such arrow, and unless entering the intersection to make such other movement as is permitted by other indications shown at the same time, must stop at the marked stop line, but if none, before entering the crosswalk on the near side of the intersection, or if none, then before entering the intersection and remain standing until an indication to make the movement indicated by such arrow is shown.

- (iii) Vehicular traffic facing a FLASHING RED (stop signal) must stop at the marked stop line, but if none, before entering the crosswalk on the near side of the intersection, or if none, then at the point nearest the intersecting roadway where the driver has a view of approaching traffic on the intersecting roadway before entering the intersection, and the right to proceed is subject to the provisions of GL c. 89 s. 8.

Section 9 U-turns Prohibited

No operator may back or turn a vehicle to proceed in the opposite direction on the following streets:

- On Avon Road – From Thorpe Circle to the Thorpe School.
- On Maple Street – From the southwesterly corner of High Street and Elm Street to the intersection of Locust Street.
- Lane Parkway

Section 10 Stop Signs & Yield Signs

A. Stop Signs

- i. Under the provisions of G.L. c. 89, § 9, the streets listed in **Schedule No. 3: Stop Sign Locations**, which is expressly incorporated into this section, are designated as "Stop" streets at the intersections and in the direction indicated.
- ii. The erection and maintenance of official "STOP" signs or a flashing red signal indication is authorized to face the streets or intersections as described in **Schedule No. 3: Stop Sign Locations**.

B. Yield Signs

- i. Under the provisions of G.L. c. 89, § 9, the streets listed in **Schedule No. 4: Yield Street Locations**, which is expressly incorporated into this section, constitute yield streets.
- ii. The erection and maintenance of official "YIELD" signs or a flashing yellow signal indication is authorized to face the streets or intersections as described in **Schedule No. 4: Yield Street Locations**.

Section 11 Keep to Right of Roadway Division

Upon roadways divided by a parkway, grass plot, reservation, viaduct, or any other structure or area, drivers must keep to the right of such a division except when otherwise directed by an officer, sign, signal, or marking.

Section 12 Operation at Under or Overpasses and Intersections with Islands

At any crossing of ways where the roadway grades have been separated and where ramps connect the ways, and at intersections of ways in which there are traffic islands, drivers of vehicles may only proceed as indicated by official signs, signals, or markings.

Section 13 Driving on Road Surfaces Under Construction or Repair

No operator may enter upon the road surface of any right of way or section thereof, when, by reasons of construction, surface treatment, maintenance or the like, or because of some unprotected hazard, such road surface is closed to travel, and one or more signs, lights, or signals have been posted to indicate that all or part of the road surface of the right of way is not to be used, or when so advised by an officer, watchman, member of the right of way crew of employee of the Town, either audibly or by signals.

Section 14 No Driving on Sidewalks

The driver of a vehicle may not drive on any sidewalk except at a permanent or temporary driveway opening.

Section 15 No Driving Through Safety Zones

It is unlawful for the driver of a vehicle, except on signal from a police officer, to drive through a safety zone.

Section 16 Funerals to be Properly Identified

A funeral composed entirely or partly of a procession of vehicles must be identified as such using black pennants bearing a purple cross attached to both the first and last vehicle or other suitable means.

Section 17 Rights and Duties of Drivers in Funeral or Other Processions

- A. It is the duty of each driver in a funeral or other procession to keep as near to the edge of the roadway as feasible and follow the vehicle as closely as is practicable and safe.
- B. At an intersection where a traffic control signal is operating, the driver of the first vehicle in a funeral or other procession is the only one required to stop for a red or yellow indication. The use of Opticom or other traffic light control devices is prohibited in funeral processions.
- C. At an intersection where a lawful stop exists, the driver of the first vehicle in a funeral or other procession is the only one required to stop before proceeding through the intersection.

D. It is unlawful for any reason to ride on any portion of a vehicle not designated or intended for the use of passengers when the vehicle is in motion. This provision does apply to any employee engaged in the necessary discharge of a duty or within truck bodies in space intended for merchandise.

Section 18 Sound Horn When Necessary

The driver of a vehicle must give an audible warning with the horn or other suitable warning devices whenever necessary to ensure safe operation.

Section 19 Heavy Commercial Vehicle Operations

A. Exclusions. The use and operation of heavy commercial vehicles are prohibited on the streets, or parts of streets, at all times, in the manner outlined in Table V-6: Heavy Commercial Vehicle Exclusions, below:

Table V-6: Heavy Commercial Vehicle Exclusions

Location	From	To	Alternate Route
Ash Street	Elm Street	Purchase Street	Elm, High, and Purchase Streets
Centre Street	Andover Street	U.S. Route 1	Route 114 and U.S. Route 1
Centre Street	Southside Road	Collins Street	Newbury and Andover Streets
Hyde Street	Collins Street	Pine Street	Collins and Pine Streets
Prince Street	Centre St	Garden St	Newbury and Andover Streets

B. Exemptions. This section does not apply to heavy commercial vehicles:

1. going to or coming from places upon the street described above for the purpose of making deliveries of goods, materials, or merchandise to or similar collections from abutting land or buildings or adjoining streets or ways to which access cannot otherwise be gained, or
2. to vehicles used in conjunction with the construction, maintenance, and repair of said street or public utilities therein; or
3. to Federal, State, Municipal, or public service corporation owned vehicles.

Section 20 Dropping or Leaking Loads

See G.L. c.85, §36.

Section 21 Emerging from Alley or Private Driveway

The operator of a vehicle emerging from an alley, driveway, or garage must stop such vehicle immediately before driving onto a sidewalk or on to the sidewalk area extending across any alleyway or driveway.

Section 22 Placing of Structures or Property in Streets Prohibited

- (i) No person may place, post, or cause to be placed or posted within any sidewalk, right of way, any fixture or structure unless a permit, issued by the Select Board, in the case of Town ways, or the Massachusetts Department of Transportation, in the case of state highways, authorizing such placing or posting has been granted and is in effect.
- (ii) No person, other than one employed directly or indirectly by the Town or by the Commonwealth of Massachusetts and while in the performance of necessary public duties, may place or leave in any sidewalk, right of way any article, material, or merchandise, or park a vehicle or in any sidewalk, right of way to display merchandise unless a permit issued by the Select Board in the case of Town ways or by the Massachusetts Department of Transportation in the case of State highways, authorizing the use of the sidewalk, right of way has been granted and is in effect except as may be necessary for the reasonable and expeditious loading or unloading of any such article, material, merchandise, cart or vehicle, provided, however, that such property may never be left to obstruct the free passage of pedestrians or vehicular travel.

Any such fixture, structure, or property, as referred to in this section, which has been posted, placed, or left illegally in any street, highway, or sidewalk, may be moved by or under the direction of an officer at the owner's expense.

Section 23 Performance Guarantee May be Required for Using Streets

The Board or officer issuing permits for the use of sidewalks, streets, or highways as are described in the two previous sections may in its discretion, when occasion justifies, demand a suitable cash deposit, surety bond or insurance indemnity policy to save the Town or the Commonwealth of Massachusetts harmless from all liability of any nature whatsoever caused directly or indirectly by such use of the sidewalk, or right of way.

Section 24 Obstructing Traffic by Stopping, Loitering, or Sauntering

No person may stop, stand, loiter, or saunter on any sidewalk, street, or highway to obstruct or impede the normal movement of traffic. Any person doing so must move on if directed to do so by an officer.

Section 25 Parades and Processions

No procession or parade, excepting the forces of the United States Army or Navy, the military forces of the Commonwealth of Massachusetts, the forces of the police and fire departments and funerals may occupy, march, or proceed along any way except under a permit issued by the Police Department and such other regulations as are set forth herein which may apply.

ARTICLE VI. CRASH REPORTS

The driver of any vehicle involved in a crash resulting in an injury or death of any person or property damage to an apparent extent of one thousand dollars or more must, within twenty-four hours, make a complete report in writing of such crash to the Police Department. A driver who has been incapacitated because of such a crash, and to such extent as to make reporting impossible or unfavorable to his or her recovery, is not be required to report such crash until able to do so. The report must be made on a form furnished by the Police Department. Compliance with this section, however, does not relieve such a driver from the additional responsibility of reporting to the Registrar of Motor Vehicles any crash in which a person is killed or injured.

ARTICLE VII. PENALTIES

Any person convicted of a violation of any rule, regulation, or order made hereunder may be punished by a fine not exceeding fifty dollars for each offense, except as otherwise herein provided.

Under the provisions of G.L. c.89, c.90, §20C, 144A, any person violating any provision of any rule; regulation, or order regulating the operation or parking of motor vehicles, may be punished by a fine for each offense as set forth below:

Table VII-1: Fine Schedule

#	Violation	Fine
01	Within 10 feet of Hydrant	\$25.00
02	Obstructing Public Transportation	25.00
03	Less than 10 Feet Unobstructed Lane	25.00
04	Fire Station Entrance (within 10 feet)	25.00
05	Across the Street from Fire Station	25.00
06	Across a Private Road or Driveway	25.00

Town of Danvers – Traffic Rules & Orders
Revised through January 19, 2021

#	Violation	Fine
06.5	Accessible Parking Area	300.00
07	Within 20 Feet of an Intersection	25.00
08	Upon a Crosswalk or Sidewalk	25.00
09	All Night Parking, When Restricted	25.00
10	RESERVED	
11	Prohibited Area	25.00
12	Wrong Direction	25.00
13	Overtime	25.00
14	Fire Lane	25.00
17	Improper Angled parking	25.00
18	Vehicle for Sale	25.00
19	Double Parking	25.00
20	Safety Zone	25.00
21	Over One (1) Foot from Curb	25.00
22	Loading Zone	25.00
24	Snow Removal	25.00
25	Street Cleaning	25.00
26	Failure to Yield to Pedestrian in Crosswalk	200.00

ARTICLE VIII. SCHEDULES

Schedule No. 1: Parking Locations and Regulations

Location	Side	From	To	Duration
Adams Street	Both	Sylvan Street	A point 600 feet northwesterly	2 Hour
Alden Street	E	Conant Street	Hunt Street	1 Hour
Alden Street	E	Park Street	Hunt Street	3 Hour
Beacon Street	Both			2 Hour; 8 AM – 9 PM
Berry Street	W	Conant Street	Park Street	2 Hour
Butler Avenue	Both			2 Hour; M-F, 8 AM – 5 PM
Central Avenue	S			2 Hour
Cherry Street				1 Hour
Cherry Street	N	Maple Street	Charter Street	1 Hour
Cherry Street	N	Charter Street	Essex Street	2 Hour
Collins Street	SW	Centre Street	A point 380 feet southerly	30 Minutes
Conant Street	Both	Maple Street	Alden Street	1 Hour

Location	Side	From	To	Duration
Conant Street	Both	Alden Street	Chase and Franklin Street	1 hour, excepting the space where 15-minute parking is permitted on the Southerly side in front of the Post Office
Conant Street	Both	Maple Street	126 feet west of Chase Street	1 Hour
Conant Street	N	Poplar	350 west	1 Hour
Conant Street	S	Alden Street	132.5 feet easterly	15 Minutes
Cottage Avenue	S			2 Hour
Elm Street	Both	Page Street	Essex Street and Park Street	1 Hour
Elm Street	Both	Maple Street	Page Street	1 Hour
Elm Street	N	Maple Street	20 feet East of Page Street	1 Hour
Endicott Street	N	51 Endicott Street	Route 128	2 Hour
Franklin Street	Both	School Street		2 Hour
High Street	Both	Conant & Elm Streets	60 feet southerly	1 Hour
High Street	Both	Elm Street	Park Street	1 Hour
High Street	Both	Park Street	Gould Street	2 Hour
High Street	W	Healy Court	150 feet north	<u>Commercial Vehicle Parking Prohibited</u>
High Street	W	Elm Street	Park Street	30 Minutes
High Street	E	Dodge Court	A point 250 feet north	No parking between 7 AM – 9 AM; M-F

Location	Side	From	To	Duration
Hobart Street	E	Charter Street	Maple Street	2 Hour
Hobart Street	N	Maple Street	North Putnam Street	1 Hour
Hobart Street	S	Maple Street	Charter Street	1 Hour
Holten Street	N	Fletcher Street	Pine Street	2 Hour
Holten Street	S	Town Hall	the easterly property line of 32 Holten Street	2 Hour
Lane Parkway	E			No parking between 7:00 – 8:00 AM and 1:30 – 2:30 PM
Locust Street	Both	Maple Street	Poplar Street	2 Hour
Maple Street		Conant Street	Central Avenue	1 Hour
Maple Street	Both	Conant Street and Elm Street	Locust Street and Hobart Street	1 Hour
Maple Street	Both	Elm Street	The Danvers Rail Trail	1 Hour
Maple Street	W	Central Avenue	Elm Street	30 Minutes
Oak Street	S			2 Hour
Page Street	E	Elm Street	A point 75 feet north of Elm Street	15 Minutes
Page Street	E	A point 125 feet north of Elm Street	Cherry Street	2 Hour
Page Street	W	Elm Street	Cherry Street	2 Hour
Park Street	N	Beacon Street	High Street	2 Hour
Park Street	N	107 feet from High Street	Berry Street	1 Hour
Park Street	S	High Street	Berry Street	1 Hour
Pine Street	E	Holten Street	Braman Street	2 Hour

Location	Side	From	To	Duration
School Street	N	Maple Street	a point 65 feet easterly	1 Hour
School Street	N			2 Hour
Sylvan Street	Both	Adams Street	Ash Street	2 Hour
Sylvan Street	N	Town Hall, for 400 feet		2 Hour
Sylvan Street	S	Ash Street	A point 275 feet south	2 Hour
Warren Street	Both	Park Street	A point 50 feet east	2 Hour
Water Street	E	A point 88 feet North of Mill Street	A point 347 feet northerly	2 Hour
Water Street	E	Mill Street	A point 88 feet north	30 Minutes
Water Street	W	A point 173 feet South of High Street	A point 532 feet southerly	2 Hour
Water Street	W	A point 83 feet South of Mill Street	A point 138 feet southerly	2 Hour, between 8 AM – 6 PM

Schedule No. 2: One-Way Streets

Location	Direction	From	To
Ash Street	S	Sylvan Street	Adams Street
Central Avenue	E	Maple Street	Franklin Street
Charter Street	N	Cherry Street	Hobart Street
Cottage Avenue	W	Franklin Street	Maple Street
Folly Hill Drive	S	SR 128	
Maple Street	N	Maple Street	Poplar Street
Maple Street, Parking Aisle	S	Central Avenue	Conant Street
Page Street	N	Elm Street	Cherry Street
Peabody Avenue	S	Holten Street	Pond Street
Reservoir Drive	N	North Street	Naumkeag Row

Schedule No. 3: Stop Sign Locations

Location	At	Direction
Adams Street	Ash Street	Eastbound
Adams Street	Pine Street	Westbound
Alden Street	Park Street	Both
Alden Street	Conant Street	Northwest bound
Alden Street	Hunt Street	Southeast bound
Amherst Street	Cabot Street	Westbound
Amherst Street	Massachusetts Avenue	Southeast bound
Anna Drive	Dayton Street	Westbound
Appleton Street	Endicott Street	Northbound
Appleton Street	Water Street	Northeast bound
Arthur Street	Purchase Street	Southeast bound
Ash Street	Elm Street	Eastbound
Ash Street	Purchase Street	Southbound
Ash Street	Sylvan Street	Southbound
Ashley Lane	Whipple Street	Eastbound
Avery Street	High Street	Westbound
Avon Road	Thorpe Circle	Northwest bound
Avon Street	Burley Street	Southwest bound
Baldwin Road	Foster Street	Southwest bound
Barbara Road	Burley Street	Northeast bound
Bartlett Road	Foster Street	Southwest bound
Bates Street	Water Street	Southwest bound
Bavaro Pass	Elm Street	Northbound
Bavaro Pass	Park Street	Southbound
Bayberry Street	Maple Street	Northeast bound
Bayview Avenue	Chase Street	Both
Bayview Avenue	High Street	Southwest bound
Bayview Terrace	Bayview Avenue	Both
Beacon Street	Park Street	Northbound

Location	At	Direction
Beaver Park Road	Maple Street	Northeast bound
Beaver Park Road	Pickering Street	Southwest bound
Belgian Road	Poplar Street	Southwest bound
Bell Street	Andrews Street	Southbound
Berry Street	Conant Street	Northwest bound
Berry Street	Hunt Street	Both
Berry Street	Park Street	Both
Birch Hill Road	Regent Drive	Southeast bound
Bow Street	MacArthur Blvd	Southwest bound
Bowdoin Street	Massachusetts Avenue	Eastbound
Bowdoin Street	Cabot Road	Westbound
Bradford Road	Burley Street	Westbound
Bradley Road	Elliott Street	Southwest bound
Bradstreet Avenue	Bridge Street	Northeast bound
Bradstreet Avenue	Doty Avenue	Both
Braman Street	Pine Street	Southwest bound
Braman Street	Wadsworth Street	Both
Briarwood Drive	Centre Street	Southbound
Broad Street	Water Street	Northeast bound
Brookside Avenue		Both
Bunting Way	Robin Hill Road	Northbound
Burley Avenue	Maple Street	Southwest bound
Burley Farm Road	Conant Street	Southbound
Burley Street	Conant Street	Southbound
Burroughs Street	Holten Street	Northwest bound
Butler Avenue	Locust Street	Southwest bound
Buttonwood Lane	Strawberry Hill Lane	Southbound
Buxton Road	Andover Street	Northeast bound
Cabot Road	Burley Street	Eastbound
Cabot Road	Chestnut Street	Southbound

Location	At	Direction
Canal Street	High Street	Eastbound
Cardinal Road	Elliott Street	Southwest bound
Carolyn Drive	Hobart Street	Northbound
Carter Lane	Locust Street	Westbound
Cemetery Road	Andover Street	Northeast bound
Central Avenue	Franklin Street	Both
Central Avenue	Poplar Street	Northeast bound
Centre Street	Armory Road	Westbound
Centre Street	Andover Street	Southwest bound
Centre Street	Green Street	Eastbound
Charles Street	Holten Street	Southbound
Charles Street	Pickering Street	Northbound
Charter Street	Cherry Street	Southbound
Chase Street	Conant Street	Northbound
Chase Street	Park Street	Both
Cheever Street	Water Street	Eastbound
Cherry Street	Cross Street	Northbound
Cherry Street	Holten Street	Southbound
Cherry Street	Maple Street	Eastbound
Chester Street	Ash Street	Both
Chester Street	Lawrence Street	Northeast bound
Chester Street	Sylvan Street	Northwest bound
Chestnut Street	Locust Street	Northwest bound
Chestnut Street	Poplar Street	Southwest bound
Chestnut Street	Columbia Road	Northeast bound
Clark Street	Hobart Street	Northbound
Cole Road	Locust Street	Westbound
Collins Street	Holten Street	Northwest bound
Columbia Road	Chestnut Street	Northwest bound
Columbia Road	Poplar Street	Southwest bound

Location	At	Direction
Conant Street	Poplar Street	Northeast bound
Congress Avenue	Elliott Street	Northeast bound
Conifer Hill Drive	Conifer Hill Drive	Southwest bound
Coolidge Road	Cabot Road	Eastbound
Coolidge Road	Locust Street	Westbound
Coolidge Road	Massachusetts Avenue	Eastbound
Coolidge Road	Massachusetts Avenue	Westbound
Coolidge Road	Sherwood Avenue	Northeast bound
Cordoba Drive	Dayton Street	Northeast bound
Cornell Road	Burley Street	Southwest bound
Cottage Avenue	Maple Street	Westbound
Crane Street	Fowler Street	Northwest bound
Crane Street	Purchase Street	Southeast bound
Crestline Circle (x2)	Pine Street	Both Ends
Cross Street	Charles Street	Westbound
Cross Street	Cherry Street	Eastbound
Crossman Lane	Pine Street	Southeast bound
Damon Street	Porter Street	Both
Damon Street	Conant Street	Northwest bound
Damon Street	Park Street	Both
Danielle Drive	Anna Drive	Northbound
Dartmouth Street	Burley Street	Southeast bound
Day Avenue	Worthington Avenue	Northwest bound
Dayton Street	Newbury Street	Southeast bound
Delaware Avenue	Summer Street	Southwest bound
Dodge Court	High Street	Southwest bound
Donegal Lane	Locust Street	Northwest bound
Drummond Court	Locust Street	Eastbound
Drury Lane	Watson Parkway	Eastbound
East Street	Lindall Street	Southbound

Location	At	Direction
Eden Glen Avenue	Elliott Street	Northeast bound
Electronics Avenue	Newbury Street	Southeast bound
Electronics Avenue	Industrial Drive	Northbound
Electronics Avenue	Industrial Drive	Southbound
Elm Street	Essex Street	Northeast bound
Elm Street	Holten Street	Southwest bound
Emily Lane	Madison Avenue	Northbound
Essex Street	Cherry Street	Northwest bound
Essex Street	Elm Street	Eastbound
Exeter Street	Cabot Road	Northbound
Flint Street	Collins Street	Southwest
Folly Hill Drive	Wayside Drive	Both
Forest Street	Hobart Street	Southbound
Forest Street	Maple Street	Northbound
Foster Street	Elliott Street	Southbound
Fowler Street	Ash Street	Southwest bound
Fowler Street	Lawrence Street	Northeast bound
Fox Run Road	Maple Street	Southwest bound
Franklin Street	Conant Street	Southbound
Franklin Street	Poplar Street	Northeast bound
Franklin Street	School Street	Both
Garden Street	Prince Street	Northeast bound
Garfield Avenue	Elliott Street	Southwest bound
Gorman Road	Maple Street	Northeast bound
Gould Street	High Street	Southwest bound
Gould Street	Park Street	Northwest bound
Grapevine Road	Conant Street	Southeast bound
Graystone Drive	Locust Street	Southeast bound
Greenleaf Drive (x2)	Summer Street	Eastbound
Grove Street	Brookvale Drive	Northeast bound

Location	At	Direction
Grove Street	Poplar Street	Southwest bound
Hampshire Street	Ash Street	Southwest bound
Hampshire Street	Lawrence Street	Northeast bound
Harbor Street	Liberty Street	Northwest bound
Hardy Street	High Street	Southwest bound
Hathorne Avenue	Dayton Street	Northwest bound
Hazen Avenue	Preston Street	Southbound
Healy Court	High Street	Eastbound
Hillcrest Road	Cardinal Road	Northwest bound
Hobart Street	Centre Street	Southwest bound
Hobart Street	Pickering Street	Both
Hobart Street	Pine Street	Both
Hollis Road	Maple Street	Northeast bound
Hood Road	Locust Street	Westbound
Hood Terrace	High Street	Northeast bound
Hunt Street	Berry Street	Both
Hunt Street	Chase Street	Southwest bound
Hunt Street	Chase Street	Northeast bound
Hunt Street	Damon Street	Northeast bound
Hunt Street	High Street	Westbound
Hyde Street	Collins Street	Southwest bound
Hyde Street	Pine Street	Eastbound
Industrial Drive	Electronics Avenue	Westbound
Jacobs Avenue	Jacobs Landing	Eastbound
Jacobs Avenue	North Shore Avenue	Southbound
Jacobs Landing	Jacobs Avenue	Southbound
Kenmore Drive	Summer Street	Westbound
Kent Street	Harbor Street	Northeast bound
Kent Street	River Street	Southwest bound
Kimberley Avenue	Otis Street	Northeast bound

Location	At	Direction
Lafayette Avenue	Beaver Park	Both
Lane Parkway	Conant Street	Northwest bound
Lane Parkway	Park Street	Southeast bound
Larrabee Avenue	Maple Street	Northeast bound
Laurel Street	Purchase Street	Southeast bound
Lawrence Street	Ash Street	Westbound
Lawrence Street	Purchase Street	Southwest bound
Lebel Road	Ipswich River Road	Westbound
Ledgewood Drive	Rockland Road	Southbound
Ledgewood Drive	Seneca Drive	Southbound
Ledgewood Drive	Strawberry Hill Lane	Northbound
Lima Street	Summer Street	Eastbound
Lindall Street	Burley Avenue	Both
Lindall Street	Locust Street	Both
Lindall Street	Winthrop Street	Westbound
Lindall Street	Winthrop Street	Eastbound
Lobao Drive	Summer Street	Eastbound
Locksley Road	Ledgewood Drive	Westbound
Locksley Road	Ledgewood Drive	Eastbound
Longbow Road	Seneca Drive	Southbound
Loris Road	Pine Street	Northeast bound
Lummas Avenue	Maple Street	Southwest bound
Lupine Road	Elliott Street	Southwest bound
MacArthur Boulevard	Andover Street	Southwest bound
MacArthur Boulevard	Walter Road	Northeast bound
Maple Street	Poplar Street	Northbound
Massachusetts Avenue	Brookvale Drive	Southbound
Massachusetts Avenue	Cabot Road	Northbound
Mead Street	River Street	Southwest bound
Meghan's Way	Hobart Street	Southeast bound

Location	At	Direction
Merrill Street	High Street	Northeast bound
Middleton Road	Dayton Street	Northwest bound
Mildred Road	Burley Street	Northeast bound
Mill Street	River Street	Northeast bound
Mill Street	Water Street	Westbound
Milton Road	High Street	Southwest bound
Mohawk Street	Delaware Avenue	Westbound
Moore Circle	Cardinal Road	Northwest bound
Morgan Drive	Wenham Street	Southeast bound
Morningside Drive	Cabot Road	Westbound
Mount Carmel Road	Adams Avenue	Westbound
Mount Carmel Road	Adams Avenue	Eastbound
Naumkeag Row	North Street	Westbound
Naumkeag Row	Reservoir Drive	Westbound
Neal Road	Locust Street	Eastbound
Nichols Street	Maple Street	Westbound
Nichols Street	Spring Street	Eastbound
North Belgian Road	Cabot Road	Westbound
North Putnam Street	Bell Street	Northbound
North Shore Avenue	Water Street	Westbound
North Street	North Street	Northeast bound
North Street	Locust Street	Eastbound
Oak Street	Locust Street	Northwest bound
Orchard Lane	Foster Street	Eastbound
Orchard Lane	Liberty Street	Westbound
Orrantia Circle	Lobao Drive	Westbound
Otis Street	Pickering Street	Eastbound
Otis Street	Pine Street	Westbound
Page Street	Cherry Street	Northbound
Park Street	Ash Street	Westbound

Location	At	Direction
Park Street	High Street	Both
Park Street	Lane Parkway	Northeast bound
Park Street	Sylvan Street	Westbound
Patricia Road (x2)	Centre Street	Both Ends
Peabody Avenue	Holten Street	Northbound
Peach Tree Lane	Foster Street	Southwest bound
Perry Street	High Street	Northeast bound
Pickering Street	Vineyard Street	Northwest bound
Pickering Street	Cross Street	Southeast bound
Pickering Street	Hobart Street	Both
Pine Hill Road	Worthington Avenue	Southeast bound
Pine Street	Hobart Street	Both
Pine Street	Maple Street	Northbound
Pine Street	Sylvan Street	Southeast bound
Pleasant Avenue	Purchase Street	Northwest bound
Pond Street	Holten Street	Northbound
Porter Street	Chase Street	Both
Porter Street	Damon Street	Northeast bound
Porter Street	Damon Street	Southwest bound
Porter Street	High Street	Southwest bound
Postgate Road	Pine Street	Southbound
Preston Street	Hazen Avenue	Northwest bound
Preston Street	Maple Street	Northwest bound
Prince Place	Forest Street	Northeast bound
Prince Street	Centre Street	Eastbound
Prince Street	Garden Street	Northbound
Princeton Street	Dartmouth Street	Both
Princeton Street	Wenham Street	Northbound
Prospect Street	Conant Street	Northbound
Putnam Street	Cherry Street	Both

Location	At	Direction
Rainbow Terrace	Water Street	Northeast bound
Ralph Road	MacArthur Boulevard	Northbound
Ray Street	Walter Road	Eastbound
Reservoir Drive	Naumkeag Row	Southbound
Riding Club Road	Locust Street	Northeast bound
River Street	High Street	Northbound
Riverside Avenue	Bayview Terrace	Southwest bound
Riverside Avenue	Bayview Terrace	Northeast bound
Riverside Avenue	High Street	Southbound
Riverside Street	Water Street	Southwest bound
Riverview Avenue	Elliott Street	Northeast bound
Robin Hill Road	Locust Street	Westbound
Rogers Road	Reservoir Drive	Northeast bound
Rogers Road.	North Street	Southwest bound
Roman Avenue	Elliott Street	Southwest bound
Roosevelt Avenue	Beaver Park Road	Both
Rowell Road	Watson Parkway	Northwest bound
Rowell Road	Centre Street	Northeast bound
Saratoga Lane	Putnam Lane	Southwest bound
School Street	Maple Street	Southwest bound
School Street	Poplar Street	Northeast bound
Seaview Avenue	Elliott Street	Northeast bound
Shawmut Avenue	Green Street	Northeast bound
Shawmut Avenue	Andover Street	Southwest bound
Sherwood Avenue	Cabot Road	Northbound
Sherwood Avenue	Burley Street	Northwest bound
Shetland Road	Poplar Street	Southwest bound
Southside Road	Centre Street	Northbound
Sparrow Lane	Robin Hill Road	Northwest bound
Spring Street	Summer Street	Eastbound

Location	At	Direction
Spruce Street	Pine Street	Eastbound
Stafford Road	Burley Street	Eastbound
State Road	Liberty Street	Southwest bound
Stone Street	Holten Street	Southbound
Strawberry Hill Lane	Summer Street	Westbound
Summer Street	North Street	Northwest bound
Sunset Avenue	Maple Street	Northeast bound
Sylvan Street	Elm Street	Northeast bound
Taryn Drive	Putnam Lane	Northeast bound
Thorpe Circle	Avon Road	Southwest bound
Tipert Street	Collins Street	Northeast bound
Tipert Street	Walter Road	Westbound
Trask Street	Franklin Street	Southwest bound
Trask Street	Poplar Street	Eastbound
Trask Way	Central Avenue	Northbound
Trask Way	Conant Street	Southbound
Treetops	Buttonwood Lane	Westbound
Twin Echo Lane	Centre Street	Southbound
Upland Road	Trask Lane	Northeast bound
Valley Road	Locust Street	Southbound
Venice Street	Brookside Avenue	Both
Veronica Drive	Andover Street	Northeast bound
Vineyard Street	Pine Street	Southwest bound
Wadsworth Street	Hobart Street	Northbound
Washington Street	Holten Street	Southbound
Washington Street	Pine Street	Northeast bound
Watson Parkway	Centre Street	Northbound
Wayside Drive	Trask Lane	Northeast bound
Webb Street	Bayview Terrace	Northeast bound
Webb Street	High Street	Southwest bound

Location	At	Direction
Webb Street	St. Hillaire Avenue	Southwest bound
Wellesley Road	Wenham Street	Northwest bound
Wellesley Street	Wenham Street	Northbound
Wenham Street	Locust Street	Southwest bound
West Street	Dayton Street	Northbound drivers
Whipple Street	Pine Street	Eastbound
Whitfield Street	Burley Street	Southwest bound
Winthrop Street	Poplar Street	Southwest bound
Worthington Avenue	Locust Street	Southeast bound

Schedule No. 4: Yield Street Locations

Location	At	Direction
Conant Street	Poplar Avenue	Westbound

Schedule No. 5: Prohibited Parking Locations

Location	Side	From	To
Adams Street	N	Ash Street	Sylvan Street
Adams Street	S	Ash Street turn lane 50 feet west	Sylvan Street 50 feet east
Alden Street	W	Conant Street	Hunt Street
Appleton Street	Both	the dead-end	
Appleton Street	W	Dead-end terminus, jersey barriers	100 Feet
Avon Road	NE	Thorpe Circle	Thorpe School
Bates Street	Both	2 Bates Street	
Berry Street	E	Conant Street	Park Street
Berry Street	W	Park Street	Hunt Street
Betsy's Way	Both		
Burley Avenue	Both	Maple Street	Lindall Street
Burley Street	E	Avon Street	Northerly 100 feet
Burley Street	W	Avon Street	Southerly 115 feet
Cabot Road	N	Burley Street	Colgate Street
Central Avenue	N	Maple Street	Poplar Street
Centre Street	SW	Prince Street	Collins Street
Charter Street	E	Cherry Street	The Rail Trail
Charter Street	W	Cherry Street	A point 120 feet
Chase Street	E	Conant Street	Park Street
Cheever Street	S	Perry Street	Water Street
Cherry Street	S	Maple Street	Essex Street
Chester Street	E	the driveway at 14 Chester Street	Sylvan Street
Chester Street	E	the centerline of Lawrence Street	100 Feet
Collins Street	Both	Sylvan Street	West 200 feet
Conant Street	S	Lane Parkway	Elliott Street
Conant Street	S	High Street	A point 115 feet north

Town of Danvers – Traffic Rules & Orders
Revised through January 19, 2021

Location	Side	From	To
Conant Street	N	Maple Street	a point 175 feet east
Cottage Avenue	N	Maple Street	Franklin Street
Cottage Avenue	S	Maple Street	A point 170 feet
Damon Street	N	Conant Street	Porter Street
Dodge Court	Both	High Street	A point 154 feet
Endicott Street	Both	Sylvan Street	the Boston & Maine Railroad Crossing Bridge
Forest Street	E	42 Forest Street	84 Forest Street
Franklin Street	W	School Street	Poplar Street
Garden Street	Both	Andover Street	a point 45 feet northeasterly
Garden Street	S	Prince Street	Westerly property line of 19 Garden Street
Harbor Street	S	Liberty Street	Mead Street
Healy Court	N	High Street	70 feet; 103 to 236 ft; 276 to 354 ft
Healy Court	S	High Street	70 feet; 236 to 251 ft; 347 to end
High Street	S	Water Street	High Street Court
High Street	N	Liberty Street	To a point 134 ft north
High Street	SW	Webb Street	Bayview Avenue
High Street	E	Conant Street	A point 210 ft south
High Street	W	Elm Street	A point 280 feet south
High Street	E	Park Street	A point 50 feet south
High Street	W	Park Street	A point 60 feet south
High Street	W	a point 375 feet South of Gould Street	A point 460 feet South of Gould Street
Hobart Street	NW	A point 208 feet southwest of Pickering Street	A point 380 feet from start

Location	Side	From	To
Hobart Street	S	Maple Street	A point 160 feet West
Hobart Street	N	Centre Street	Forest Street
Holten Street	N	The Rail Trail	A point 142 feet west
Holten Street	S	Elm Street	A point 240 feet west
Holten Street	S	Pine Street	102 Holten Street
Holten Street	S	the easterly property line of 32 Holten Street	Pond Street
Holten Street	N	the westerly property line of 27 Holten Street	Pond Street
Holten Street	S	Burroughs Street	A point 135 feet from Pine Street
Holten Street	N	a point 125 feet west of Pine Street	a point 150 feet east of Pine Street
Holten Street	S	a point 70 feet west of Pine Street	a point 150 feet east of Pine Street
Hutton Street	Both		End of Street
Jersey Lane	S	Liberty Street	Entire length
Kent Street	E	River Street	Harbor Street
Lawrence Street	Both	Chester Street	A point 30 feet west
Liberty Street	W	129 Liberty Street	High Street
Liberty Street	E	River Street	Elliot Street
Liberty Street	W	Elliott Street	A point 120 feet south
Locust Street	E	Poplar Street	Cole Road
Locust Street	W	Maple Street	Poplar Street
Locust Street	W	Chestnut Street	Cole Road
Locust Street	W	Lindall Street	Poplar Street
Locust Street	Both	Maple Street	a point 150 feet east
Maple Street	W	Beaver Park	North Putnam Street
Maple Street	W	a point 600 feet east of Preston Street	a point directly opposite the intersection of Prentiss Road
Maple Street	E	Locust Street	a point 250 feet north

Town of Danvers – Traffic Rules & Orders
Revised through January 19, 2021

Location	Side	From	To
Maple Street	E	Locust Street	a point 230 feet south
Maple Street	E	Conant Street	a point 210 feet north
Maple Street	W	Hobart Street	a point 250 feet north
Maple Street	W	Hobart Street	a point 100 feet south
Maple Street	W	Elm Street	a point 60 feet north
Maple Street	Both	a point 600 feet East of Preston Street	Hazen Avenue
Maple Street		198 Maple Street	Beaver Park
Meghan's Way	W	185 Hobart	
Mill Street	S	A point starting 300 feet from Water Street	A point ending 450 feet from River Street
North Putnam Street	NW	Maple Street	Bell Street
North Putnam Street	E	Pole# 3	Pole #5
Oak Street	E	Locust Street	School Street
Oak Street	S	School Street	A point 75 feet from School Street
Orchard Lane	N	Liberty Street	Orchard Lane Extension
Otis Street	S	the easterly driveway of Saint Mary's School	A point 300 feet West Between 7 AM – 4 PM
Otis Street	N	Kimberly Drive	A point 500 feet West Between 7 AM – 4 PM
Page Street	W		
Palmer Avenue	N	Andover Street	a point 50 feet easterly
Palmer Avenue	S	Andover Street	A point 70 feet easterly
Park Street	N	High Street	A point 107 feet towards Alden Street
Park Street	N	Lane Parkway	High Street
Park Street	NW	High Street	Elm Street
Parker Island Road	W	Elliott Street	A point 110 feet away
Parker Island Road	E	Elliott Street	A point 100 feet away

Location	Side	From	To
Peabody Avenue	NW	Holten Street	Pond Street
Pine Street	W	Holten Street	Rail Trail Crossing
Pine Street	W	Holten Street	Washington Street Between 7 AM – 6 PM
Pine Street	W	Maple Street	Hobart Street
Pine Street	Both	a point 100 feet North of Holten Street	a point 65 feet South of Holten Street
Pond Street	W	Peabody Avenue	Holten Street
Poplar Street	N	Locust Street	A point 150 feet west
Porter Street	SE	High Street	St. Hilaire Avenue
Porter Street	Both	Damon Street	Northerly to the end of Porter Street
Prince Street	N	Garden Street	The northerly property line of 25 Prince Street
Putnam Street	W	Elm Street	Cherry Street
Putnam Street	E	A point 140 feet west of Elm Street	A point 45 feet north
Riverside Avenue	N	Pole 113-17	Pole #3
River Street	Both	Liberty & Water Streets	A point 80 feet away
River Street	N	Mead Street	A point 660 feet easterly
Riverside Street	S	33 Riverside Street	35 Riverside Street
School Street	S	Poplar Street	Maple Street
Southside Road	W	Centre Street	A point 548 feet to the cul-de-sac
Spring Street	S	Summer Street	Nichols Street
Summer Street	E	Maple Street	St. John's Prep
Summer Street	E	Spring Street	North Street
Sylvan Street	Both	Peabody City Line	Pine Street
Sylvan Street	N	Elm Street	A point 240 feet west
Trask Street	W (even)	Franklin Street	Poplar Street

Town of Danvers – Traffic Rules & Orders
Revised through January 19, 2021

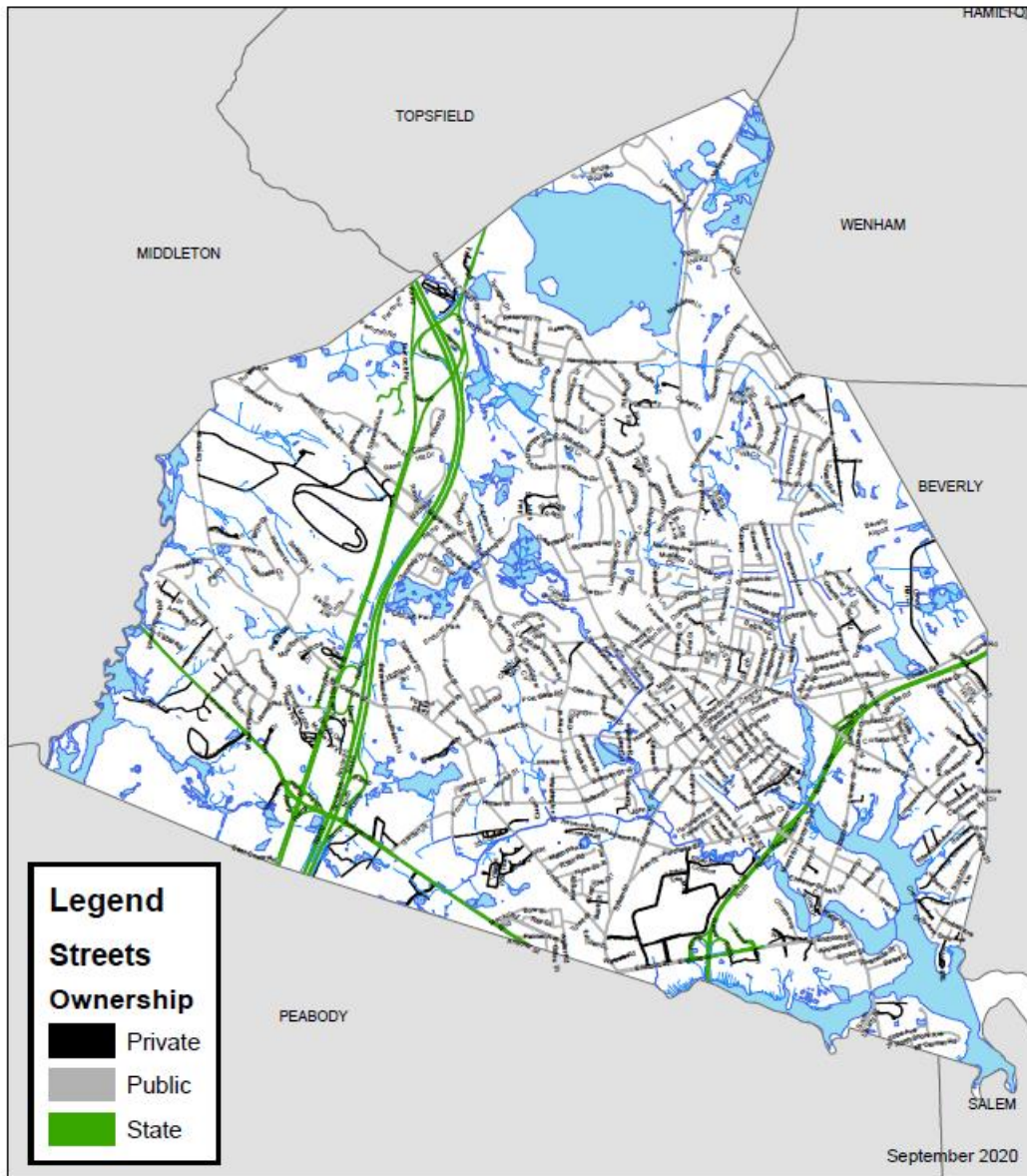
Location	Side	From	To
Water Street	E	the easterly end of Crane River Bridge	Mill Street
Water Street	W	High Street	A point 173 feet south
Water Street	E	Riverside Street	Mill Street
Water Street	E	the Crane River	Endicott Street may allow the standing of unattended motor vehicles for a period not to exceed five (5) minutes
Water Street	Both	Endicott Street	Appleton Street
Water Street	Both	Endicott Street	A point 200 feet north
Water Street	E	River Street	A point 187 feet south
Water Street	W	a point 221 feet south of Mill Street	the end of the Leonard M. Szytko Memorial Bridge
Water Street	E	the northerly end of the Waters River Bridge	Riverside Street
Webb Street	Both	St Hilaire Avenue	Bayview Terrace

ARTICLE IX. APPENDICES

Section 1 Right of Way Jurisdiction Map



**Town of Danvers
Traffic Rules and Orders
Jurisdiction Map**



Section 2 Town-owned Sites and Parking Areas

Several town-owned properties function as part of the Town's transportation network but are not within a right of way. This section details the rules and regulations for these properties.

A. Municipal Properties

Unless otherwise noted, all municipal parking areas have a two-hour parking limit. These areas, and any special conditions, are noted below.

- (i) Municipal Off-Street Parking Area Number 1. Off-street parking area to the east of Maple Street and running from Central Avenue to Cottage Avenue.
- (ii) Municipal Off-Street Parking Area Number 2. Off-street parking area on the south side of School Street.
- (iii) Municipal Off-Street Parking Area Number 3. Off-street parking area running from Elm Street to Cherry Street.
 - Trailers, Commercial, Recreational, and Oversized Vehicles may park between the hours of 9 PM-6 AM.
- (iv) Municipal Off-Street Parking Area Number 4. Off-street parking area on the south side of Hobart Street.
 - The 19 spaces in the area closest to Charter Street, are reserved for the Maple Street Congregational Church, Sundays 8:00 AM- 12:00 PM.
 - The spaces at the west end of the lot are reserved for the Cherry Street Fish Market, per a lease agreement with the MBTA.
- (v) Municipal Off-Street Parking Area Number 5. Off-street parking area to the north of Elm Street, along Page Street.
 - This parking area is designated for one-hour parking.
- (vi) Municipal Off-Street Parking Area Number 6. Off-street parking area at 64R Maple Street.
- (vii) Municipal Off-Street Parking Area Number 7. Off-street parking area at Holten Street.
- (viii) Town Hall.
 - No through traffic at both entrances of Town Hall, as well as the fire lane at the rear of Town Hall.