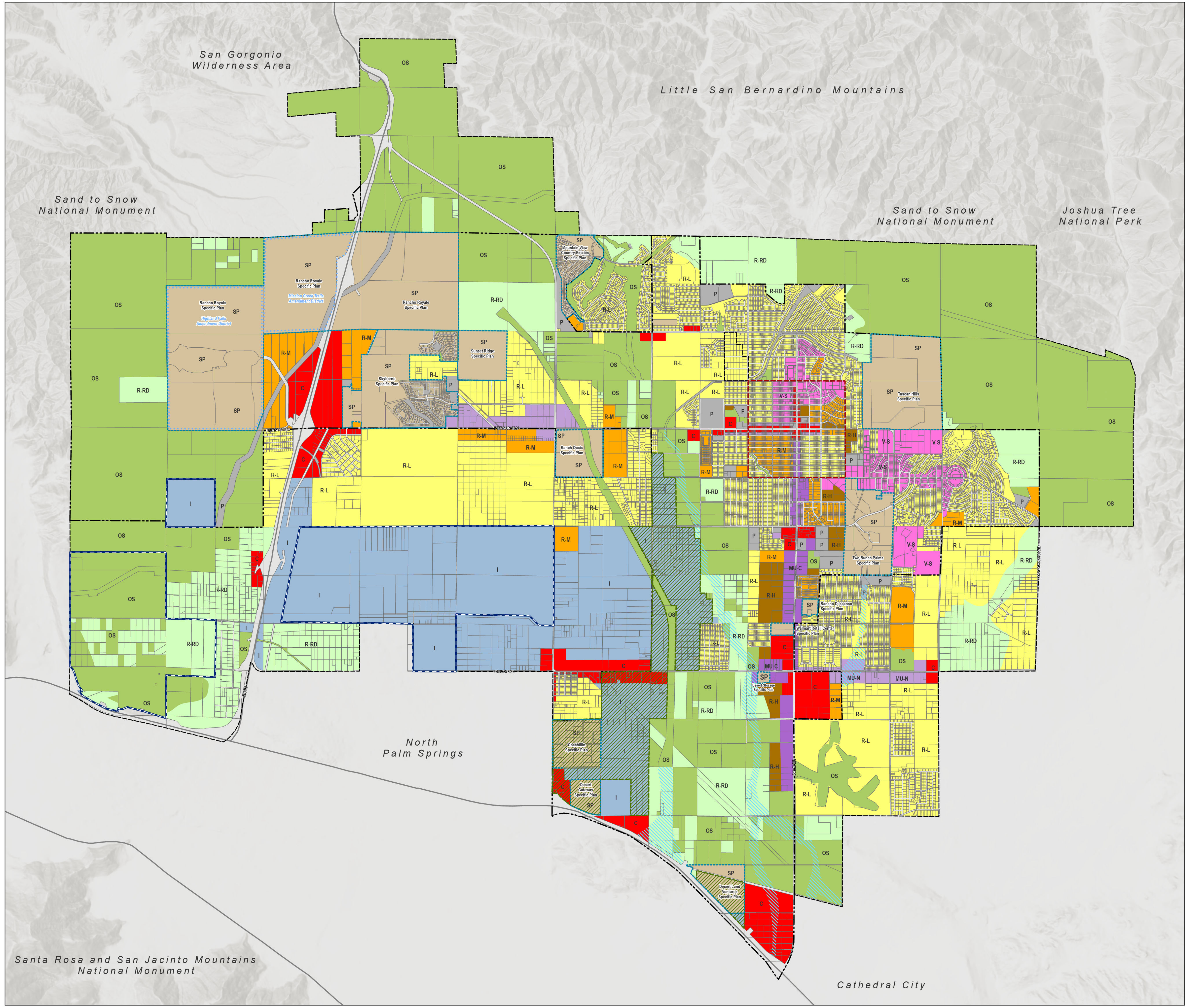




# City of Desert Hot Springs Land Use Policy Plan



### Land Use Designations

- R-RD: Residential Rural Desert (1 DU/5 AC)
- R-L: Residential Low (Up to 6.0 DU/AC)
- R-M: Residential Medium (Up to 20.0 DU/AC)
- R-H: Residential High (20.0 to 30.0 DU/AC)
- C: Commercial (0.30 FAR)
- V-S: Visitor-Serving (Up to 15.0 DU/AC)
- MU-N: Mixed-Use Neighborhood (15 DU/AC)
- MU-C: Mixed-Use Corridor (20.0 to 30.0 DU/AC)
- I: Industrial: (0.60 FAR)
- OS: Open Space
- P: Public/Institutional
- SP: Specific Plan

### Specific Plan Boundaries

- Specific Plans
- Specific Plan Amendment Districts

### Land Use Overlays

- Energy Overlay
- Arts and Culture Overlay
- Industrial Cannabis Overlay
- Floodway Overlay

### Base Map Features

- City Boundary
- Sphere of Influence

San Geronio Wilderness Area

Little San Bernardino Mountains

Sand to Snow National Monument

Sand to Snow National Monument

Joshua Tree National Park

North Palm Springs

Santa Rosa and San Jacinto Mountains National Monument

Cathedral City

Source: City of Desert Hot Springs, 2020.  
Date: November 16, 2023

