

BLOCK WALL PER BLOCK ENCLOSURE DETAIL

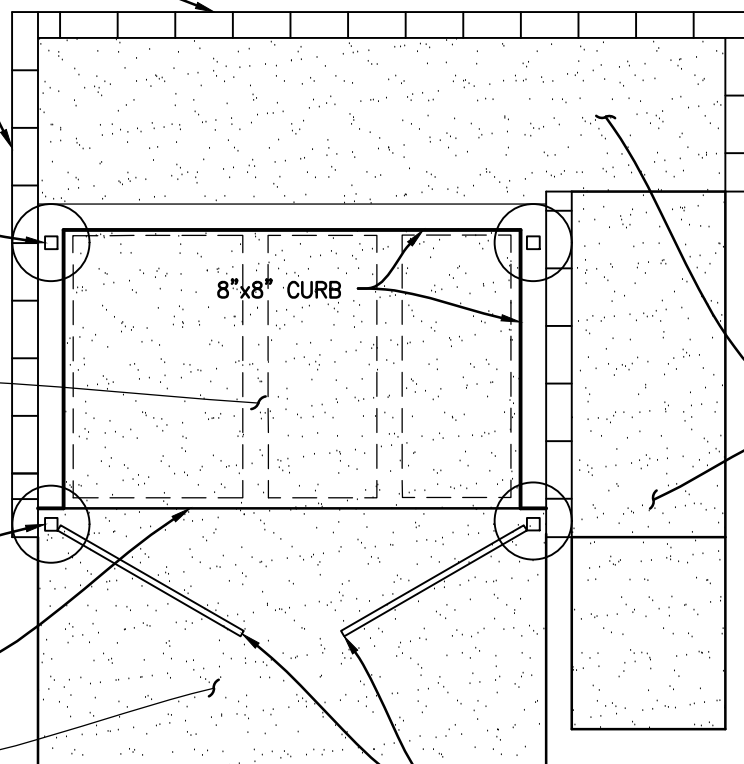
CONCRETE FILLED 1/4"x6"x6" STEEL POSTS PER GATE AND TRELLIS DETAIL

6" THICK CONCRETE SLAB WITH #3 REBAR 18" ON CENTER IN BOTH DIRECTION IN CENTER OF SLAB

CONCRETE FILLED 1/4"x6"x6" STEEL POSTS PER GATE AND TRELLIS DETAIL

EXPANSION JOINT

6" THICK CONCRETE APRON WITH #3 REBAR 18" ON CENTER IN BOTH DIRECTION IN CENTER OF SLAB



8"x8" CURB

4" THICK SIDEWALK PER CITY OF DESERT HOT SPRINGS STANDARD DRAWING 400

SLIDE BOLT LOCK AND CANE PIN BOLT PER GATE HARDWARE DETAIL

NOTES:

1. CONCRETE SHALL BE 550-A-2500
2. METAL GATES WITH HEAVY DUTY HARDWARE SHALL TOTALLY OBSCURE THE TRASH BINS AND MUST BE ARCHITECTURALLY COMPATIBLE WITH THE PROJECT. OBTAIN PLANNING DEPARTMENT APPROVAL PRIOR TO INSTALLATION.

TYPICAL LAYOUT DETAIL

NTS

8" DECORATIVE BLOCK (GROUT ALL CELLS SOLID)

#4 HORIZONTAL REBAR (USE BOND BEAM BLOCK)

#4 VERTICAL STEEL @ 24" O.C.

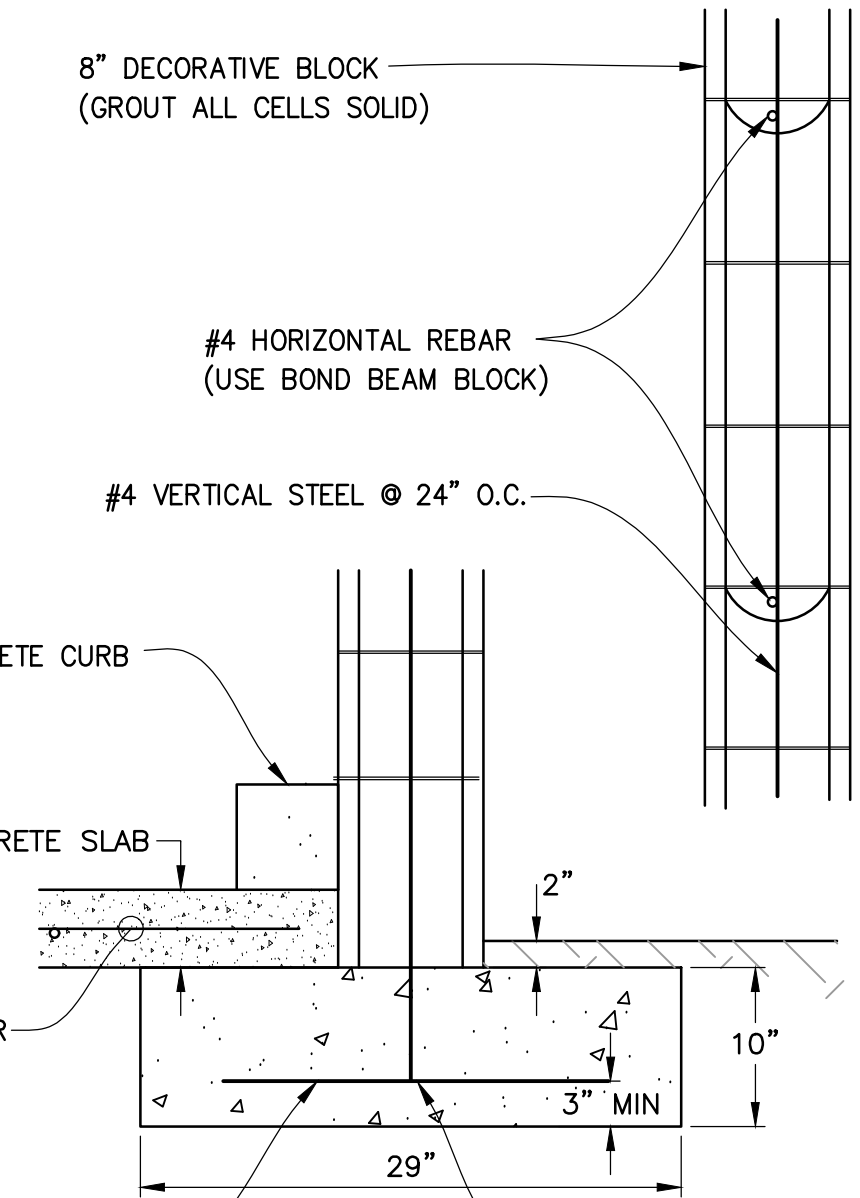
8"x8" CONCRETE CURB

6" THICK CONCRETE SLAB

#3 REBAR 18" ON CENTER BOTH DIRECTION IN CENTER OF SLAB (TYP.)

REVERSE DIRECTION EVERY OTHER BEND

#4 BAR CONTINUOUS



BLOCK ENCLOSURE DETAIL

NTS

WASTE ENCLOSURE TYPICAL DETAILS

PREPARED: 7/30/2024



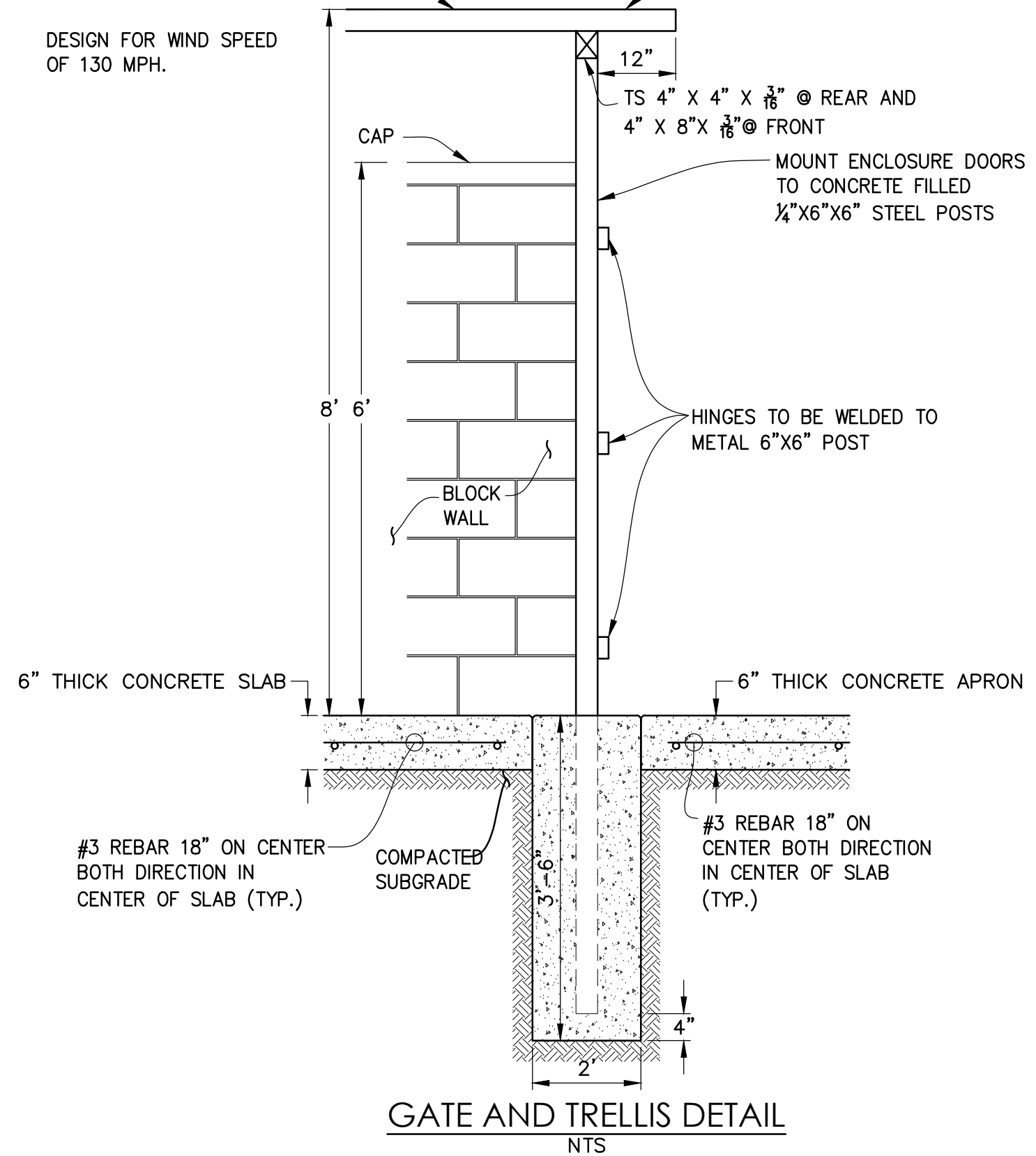
N|V|5

42-829 COOK STREET, SUITE 104
PALM DESERT, CA 92211
P: 760.341.3101 WWW.NV5.COM

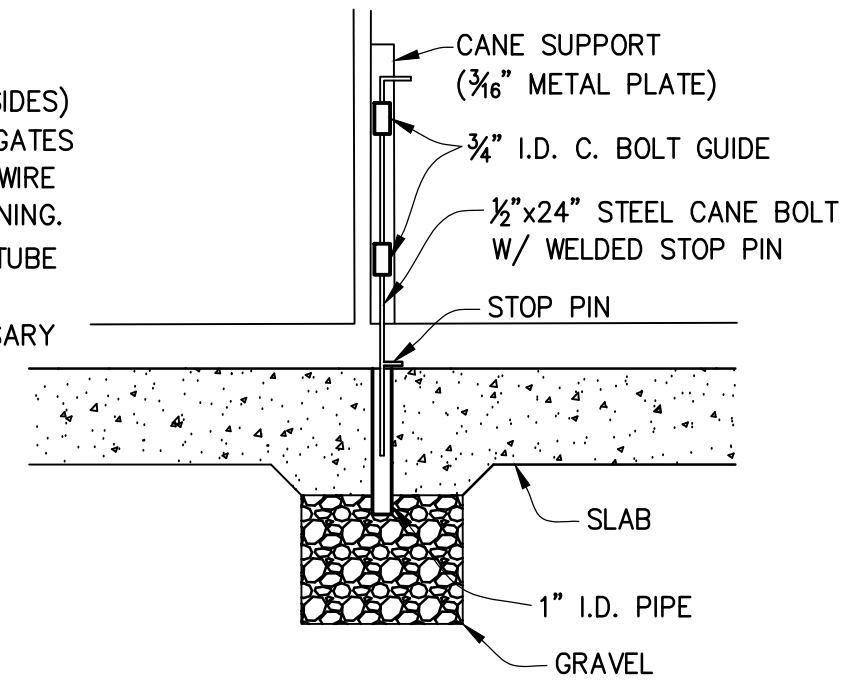
File Name: Y:\24-0000219\Cadd\Civil\Trash Enclosures.dwg Jul 30, 2024 - 11:03am

ENCLOSURE SHALL BE COVERED BY A METAL TRELLIS OR SOLID ROOF.

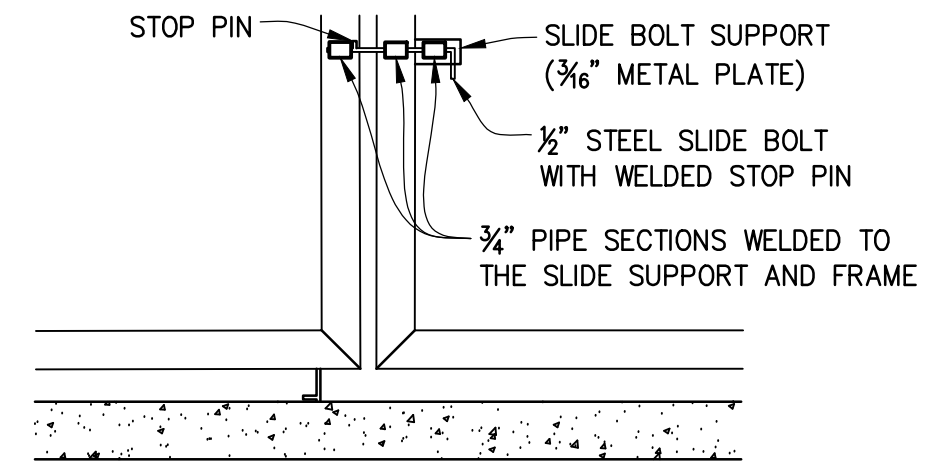
DESIGN FOR WIND SPEED OF 130 MPH.



METAL SCREEN TO BE CONSTRUCTED (FRONT AND SIDES) BETWEEN ROOF AND WALLS/GATES MADE OF STAINLESS WOVEN WIRE MESH WITH MAXIMUM 2" OPENING. WELD TO 1/2" SQUARE STEEL TUBE FRAME AND WELD 1 1/2" X 1/4" SUPPORT PLATES AS NECESSARY (TYP).



CANE BOLT DETAIL (INSIDE VIEW) NTS



SLIDE BOLT DETAIL (OUTSIDE VIEW) NTS

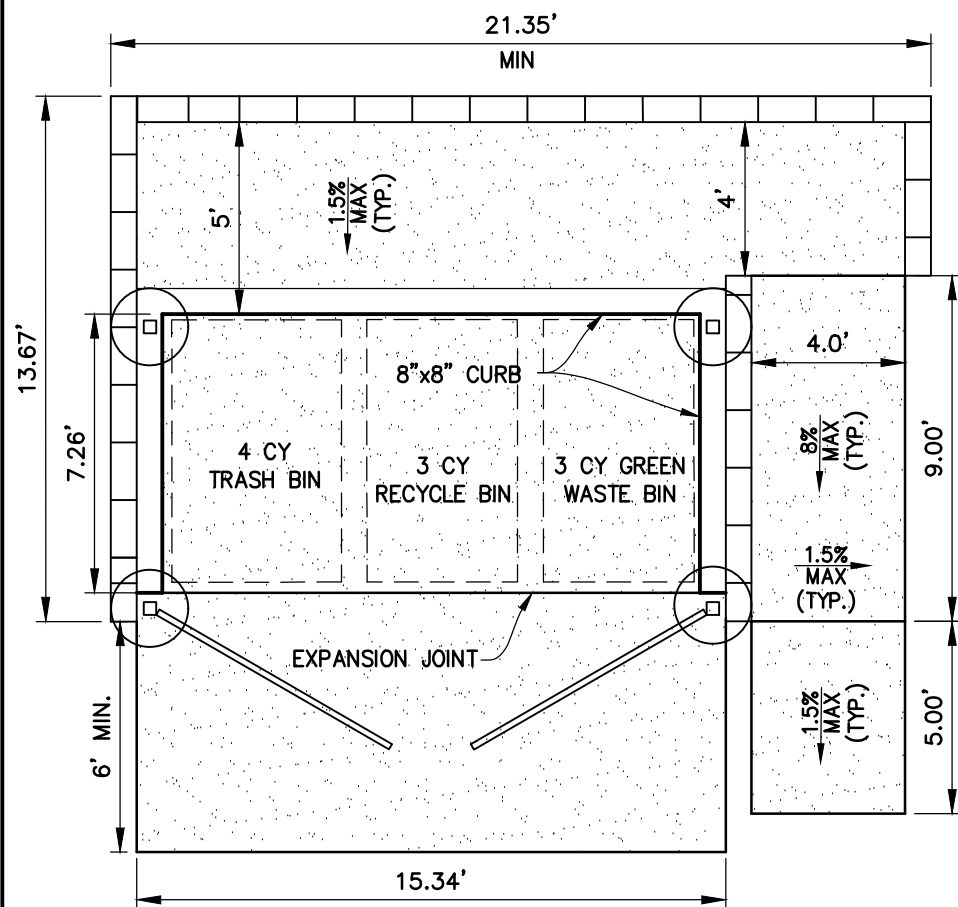
WASTE ENCLOSURE GATE AND TRELLIS DETAILS

PREPARED: 7/30/2024

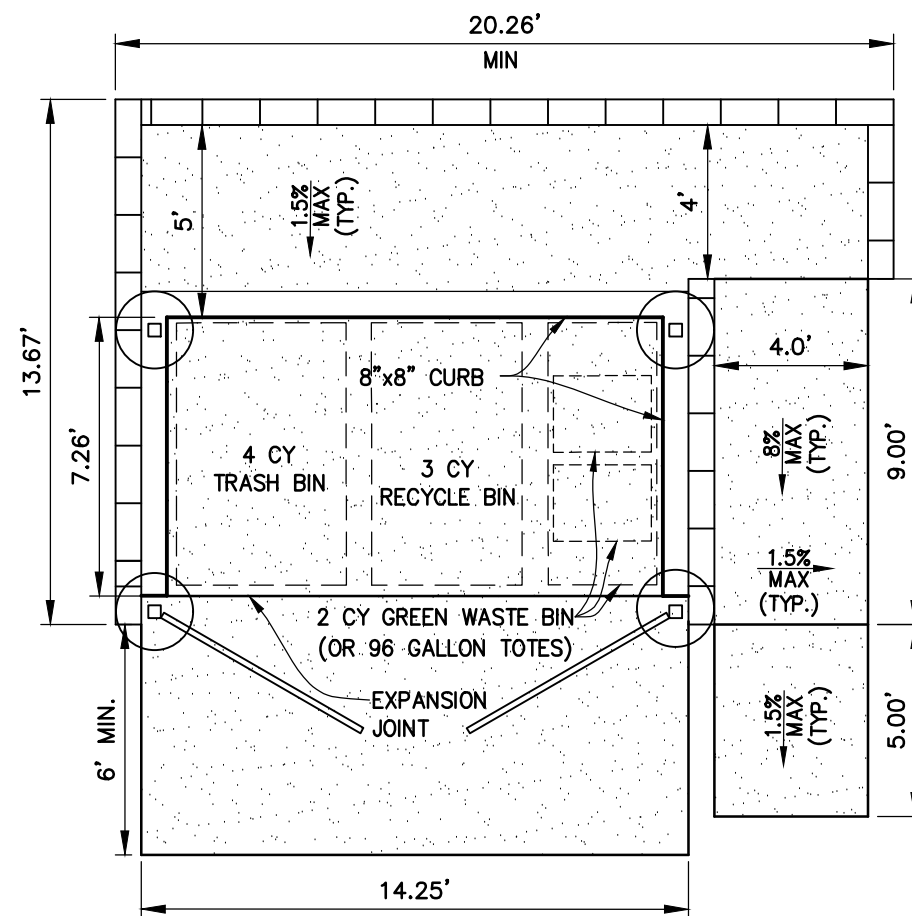


N|V|5

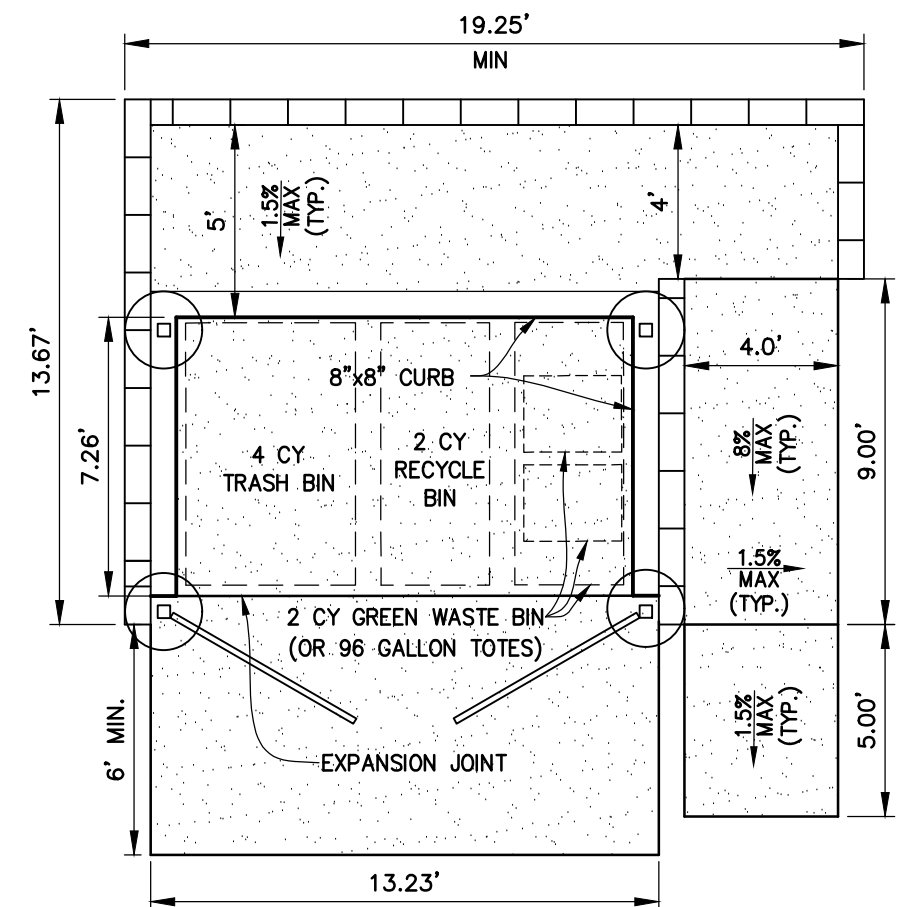
42-829 COOK STREET, SUITE 104
PALM DESERT, CA 92211
P: 760.341.3101 WWW.NV5.COM



OPTION 1



OPTION 2



OPTION 3

NOTES:

1. WALLS ARE TO BE OF DECORATIVE BLOCK, MASONRY, OR SIMILAR MATERIALS (NOT PRECISION BLOCK)
2. GATES ARE TO BE SOLID AND PAINTED TO MATCH.
3. DOUBLE SWING GATES SHALL HAVE THE SWIVEL SPOTS OUTSIDE OF THE OPENING AREA OF THE ENCLOSURE. SWIVEL POINTS SHALL BE ATTACHED TO CONCRETE FILLED STEEL POSTS/COLUMNS AT ENDS OF WALLS.
4. CONCRETE APRON IN FRONT OF ENCLOSURE SHALL BE 6' MINIMUM DEPTH FOR THE WIDTH OF THE ENCLOSURE AND SHALL NOT EXCEED 2% SLOPE.
5. TRASH ENCLOSURE SHALL HAVE A TRELLIS OR FLAT ROOF ABOVE THE GATES AND ENCLOSURE TO PREVENT UNAUTHORIZED TRASH DUMPING INTO THE BINS. SAID TRELLIS SHALL BE METAL. ALUMINUM MAY BE APPROVED AS AN ALTERNATIVE WITH AN ENGINEERED ANALYSIS.
6. MAXIMUM WALL AND GATE HEIGHT TO BE 6'-0". TOTAL ENCLOSURE HEIGHT (INCLUDING TRELLIS) SHALL BE NO MORE THAN 8'-0"
7. TRASH ENCLOSURES SHALL BE LOCATED IN AREA ACCESSIBLE TO TRASH VEHICLES. THE NUMBERS AND LOCATIONS SHALL BE SUBJECT TO COMMUNITY DEVELOPMENT DEPARTMENT REVIEW AND APPROVAL.
8. COMMUNITY DEVELOPMENT DIRECTOR MAY ALLOW DEVIATION FROM THESE STANDARDS TO ACCOMMODATE ACCESS TO THE BINS AND EXISTING SITE CONDITIONS.
9. WIND DESIGN SPEED SHALL BE 130 MPH.

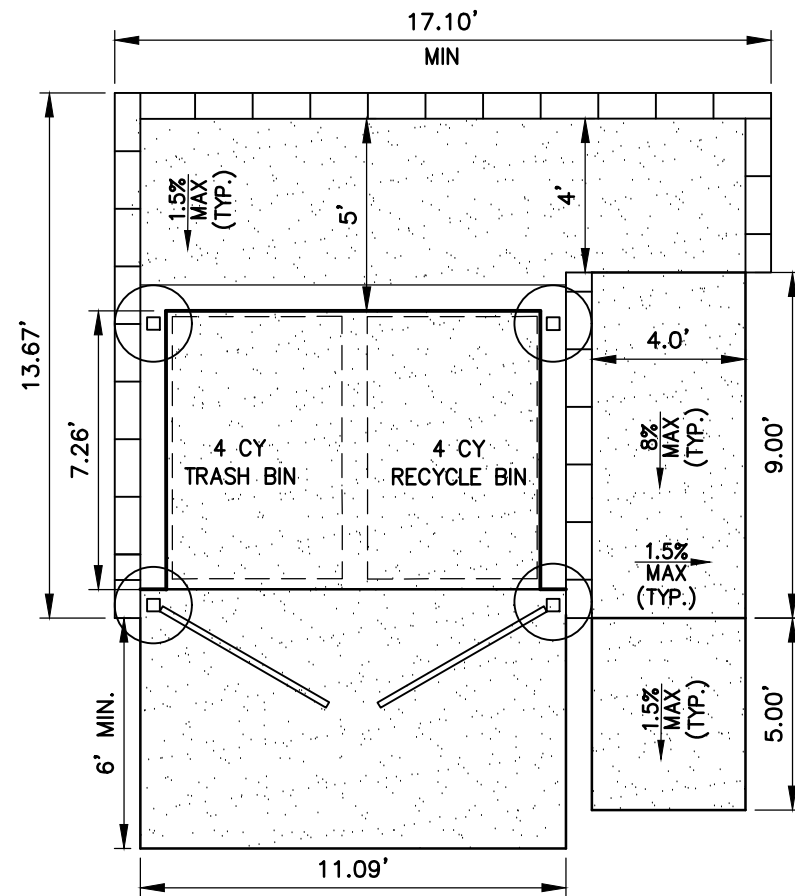
LARGE WASTE ENCLOSURE

PREPARED: 7/30/2024

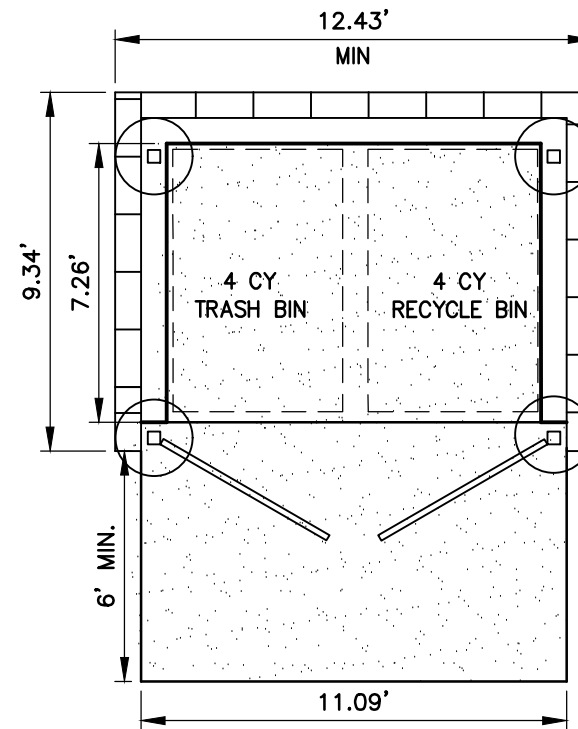


N|V|5

42-829 COOK STREET, SUITE 104
PALM DESERT, CA 92211
P: 760.341.3101 WWW.NV5.COM



OPTION 1



OPTION 2

NOTES:

1. WALLS ARE TO BE OF DECORATIVE BLOCK, MASONRY, OR SIMILAR MATERIALS (NOT PRECISION BLOCK)
2. GATES ARE TO BE SOLID AND PAINTED TO MATCH.
3. DOUBLE SWING GATES SHALL HAVE THE SWIVEL SPOTS OUTSIDE OF THE OPENING AREA OF THE ENCLOSURE. SWIVEL POINTS SHALL BE ATTACHED TO CONCRETE FILLED STEEL POSTS/COLUMNS AT ENDS OF WALLS.
4. CONCRETE APRON IN FRONT OF ENCLOSURE SHALL BE 6' MINIMUM DEPTH FOR THE WIDTH OF THE ENCLOSURE AND SHALL NOT EXCEED 2% SLOPE.
5. TRASH ENCLOSURE SHALL HAVE A TRELLIS OR FLAT ROOF ABOVE THE GATES AND ENCLOSURE TO PREVENT UNAUTHORIZED TRASH DUMPING INTO THE BINS. SAID TRELLIS SHALL BE METAL. ALUMINUM MAY BE APPROVED AS AN ALTERNATIVE WITH AN ENGINEERED ANALYSIS.
6. MAXIMUM WALL AND GATE HEIGHT TO BE 6'-0". TOTAL ENCLOSURE HEIGHT (INCLUDING TRELLIS) SHALL BE NO MORE THAN 8'-0"
7. TRASH ENCLOSURES SHALL BE LOCATED IN AREA ACCESSIBLE TO TRASH VEHICLES. THE NUMBERS AND LOCATIONS SHALL BE SUBJECT TO COMMUNITY DEVELOPMENT DEPARTMENT REVIEW AND APPROVAL.
8. COMMUNITY DEVELOPMENT DIRECTOR MAY ALLOW DEVIATION FROM THESE STANDARDS TO ACCOMMODATE ACCESS TO THE BINS AND EXISTING SITE CONDITIONS.
9. WIND DESIGN SPEED SHALL BE 130 MPH.

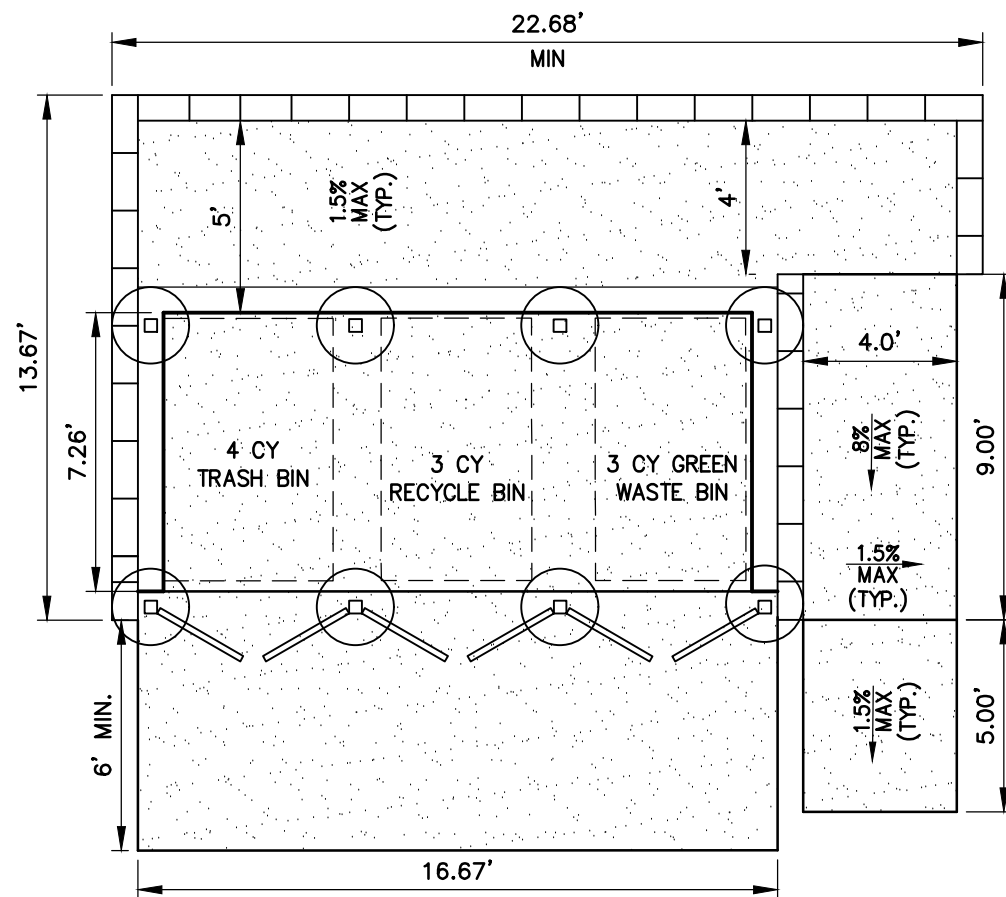
SMALL WASTE ENCLOSURE

PREPARED: 7/30/2024

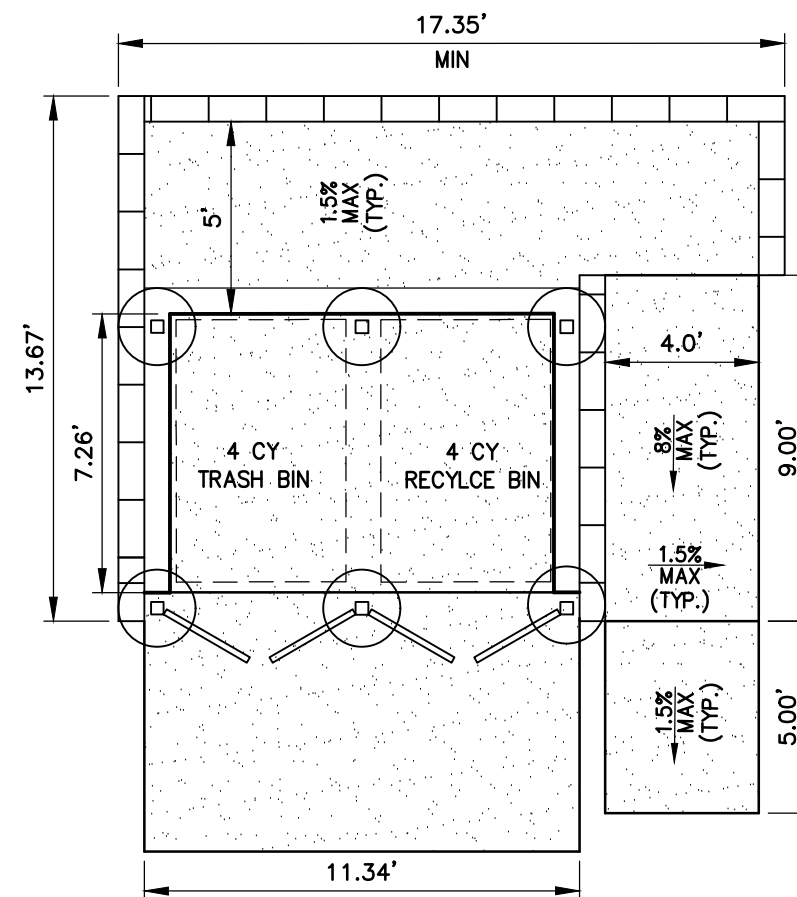


N|V|5

42-829 COOK STREET, SUITE 104
PALM DESERT, CA 92211
P: 760.341.3101 WWW.NV5.COM



OPTION 1



OPTION 2

NOTES:

1. WALLS ARE TO BE OF DECORATIVE BLOCK, MASONRY, OR SIMILAR MATERIALS (NOT PRECISION BLOCK)
2. GATES ARE TO BE SOLID AND PAINTED TO MATCH.
3. DOUBLE SWING GATES SHALL HAVE THE SWIVEL SPOTS OUTSIDE OF THE OPENING AREA OF THE ENCLOSURE. SWIVEL POINTS SHALL BE ATTACHED TO CONCRETE FILLED STEEL POSTS/COLUMNS AT ENDS OF WALLS.
4. CONCRETE APRON IN FRONT OF ENCLOSURE SHALL BE 6' MINIMUM DEPTH FOR THE WIDTH OF THE ENCLOSURE AND SHALL NOT EXCEED 2% SLOPE.
5. TRASH ENCLOSURE SHALL HAVE A TRELIS OR FLAT ROOF ABOVE THE GATES AND ENCLOSURE TO PREVENT UNAUTHORIZED TRASH DUMPING INTO THE BINS. SAID TRELIS SHALL BE METAL. ALUMINUM MAY BE APPROVED AS AN ALTERNATIVE WITH AN ENGINEERED ANALYSIS.
6. MAXIMUM WALL AND GATE HEIGHT TO BE 6'-0". TOTAL ENCLOSURE HEIGHT (INCLUDING TRELIS) SHALL BE NO MORE THAN 8'-0"
7. TRASH ENCLOSURES SHALL BE LOCATED IN AREA ACCESSIBLE TO TRASH VEHICLES. THE NUMBERS AND LOCATIONS SHALL BE SUBJECT TO COMMUNITY DEVELOPMENT DEPARTMENT REVIEW AND APPROVAL.
8. COMMUNITY DEVELOPMENT DIRECTOR MAY ALLOW DEVIATION FROM THESE STANDARDS TO ACCOMMODATE ACCESS TO THE BINS AND EXISTING SITE CONDITIONS.
9. WIND DESIGN SPEED SHALL BE 130 MPH.

MULTI-DOOR ENCLOSURE

PREPARED: 7/30/2024



N|V|5

42-829 COOK STREET, SUITE 104
PALM DESERT, CA 92211
P: 760.341.3101 WWW.NV5.COM