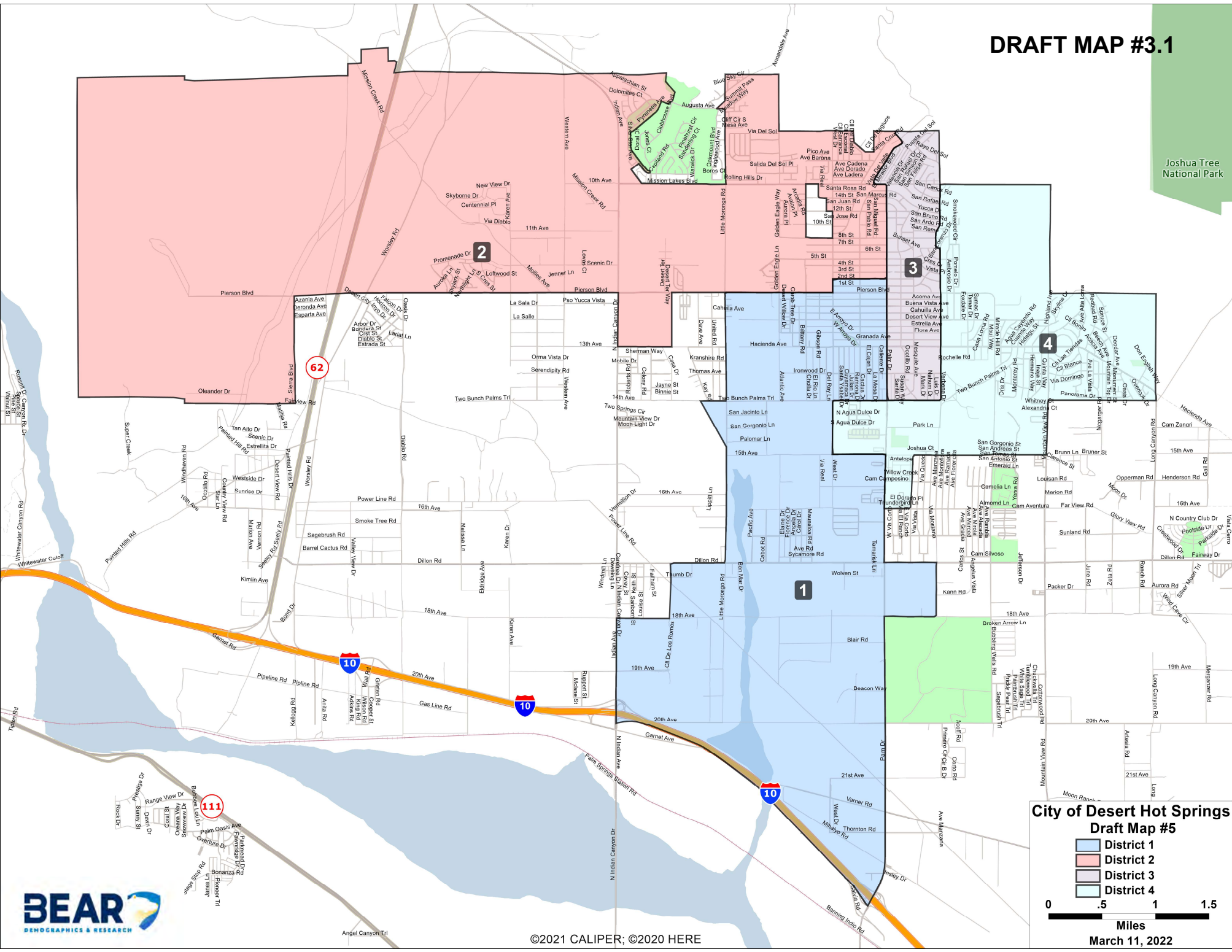


DRAFT MAP #3.1

DRAFT MAP #3.1

Joshua Tree National Park



City of Desert Hot Springs Draft Map #5

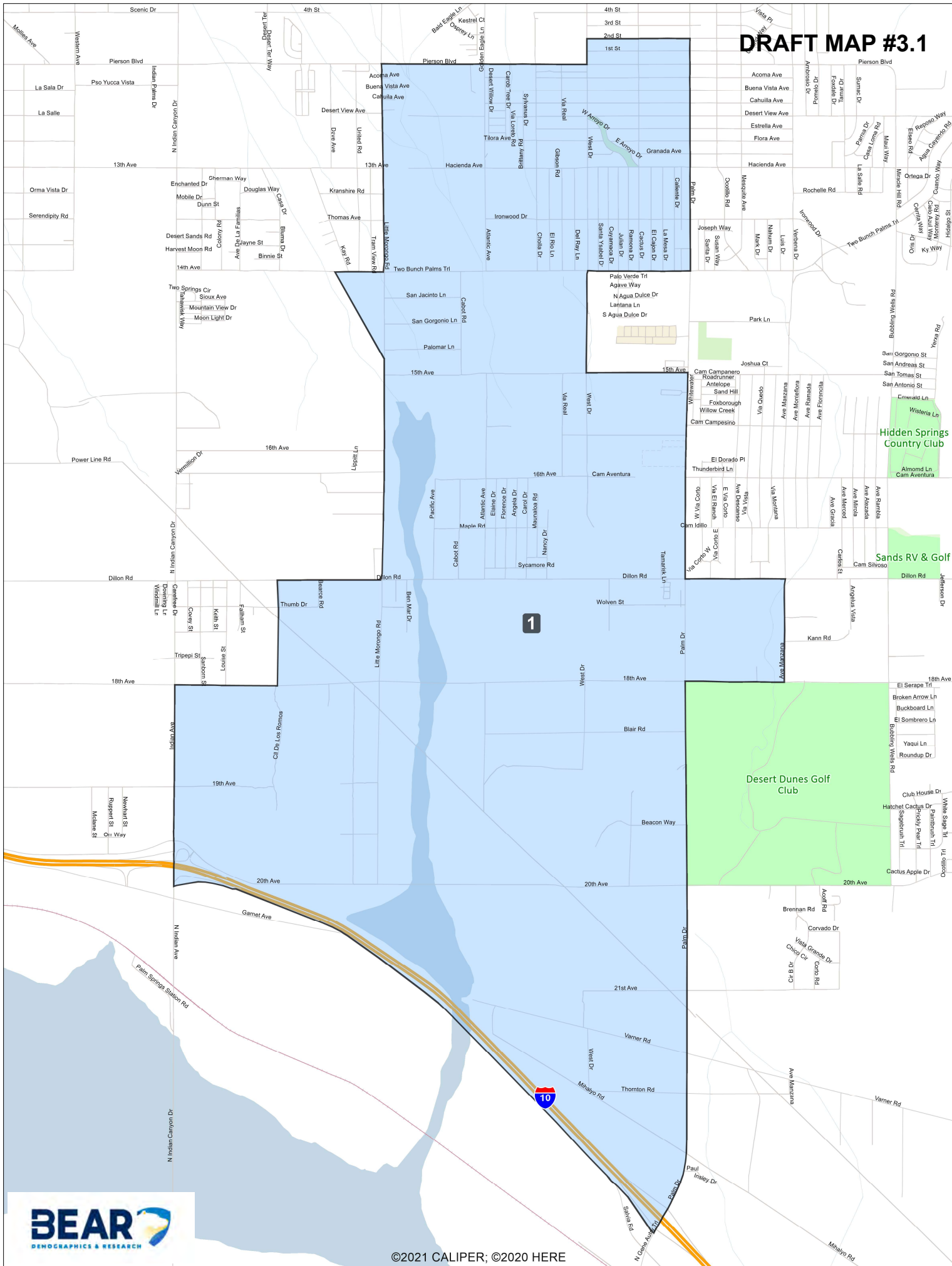
- District 1
- District 2
- District 3
- District 4



©2021 CALIPER; ©2020 HERE

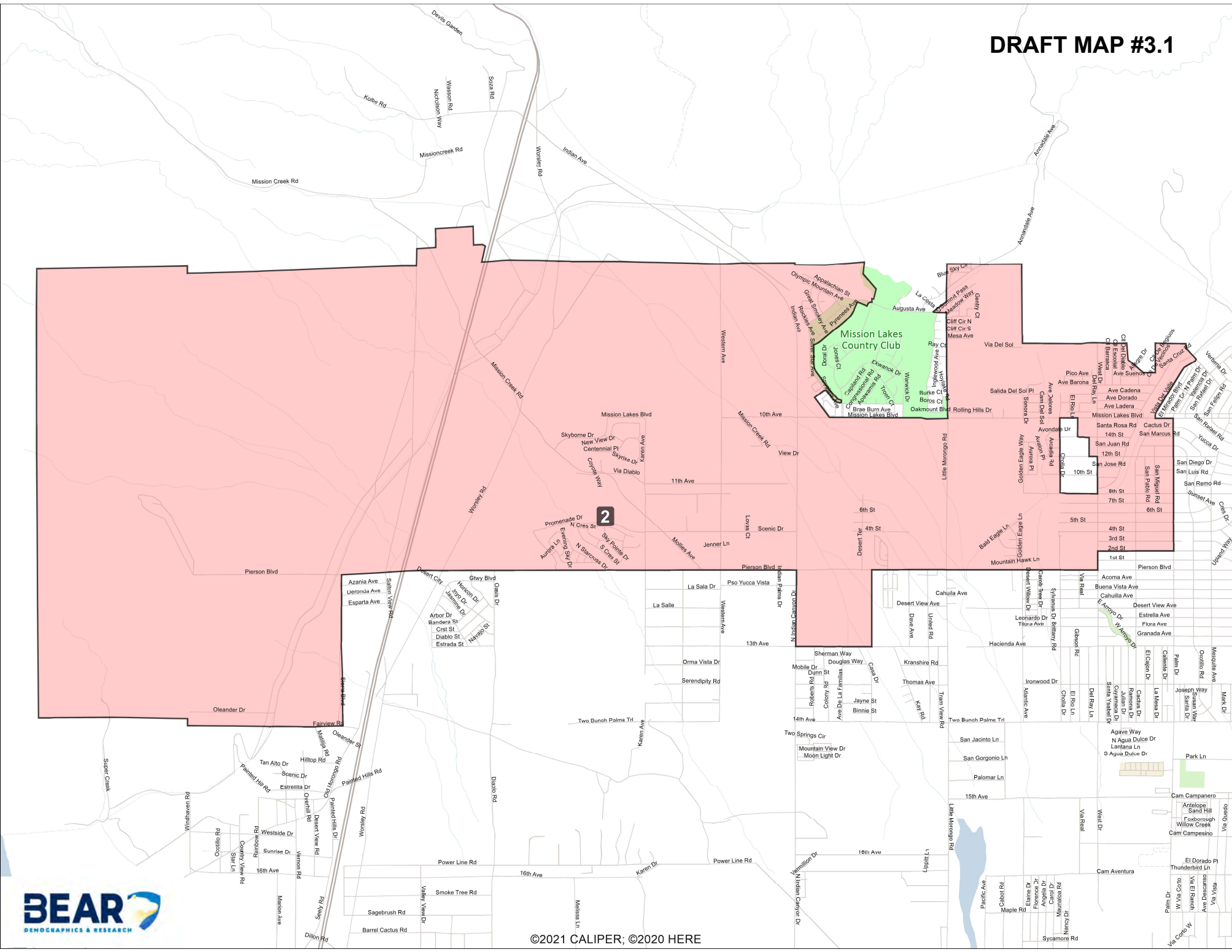
March 11, 2022

DRAFT MAP #3.1

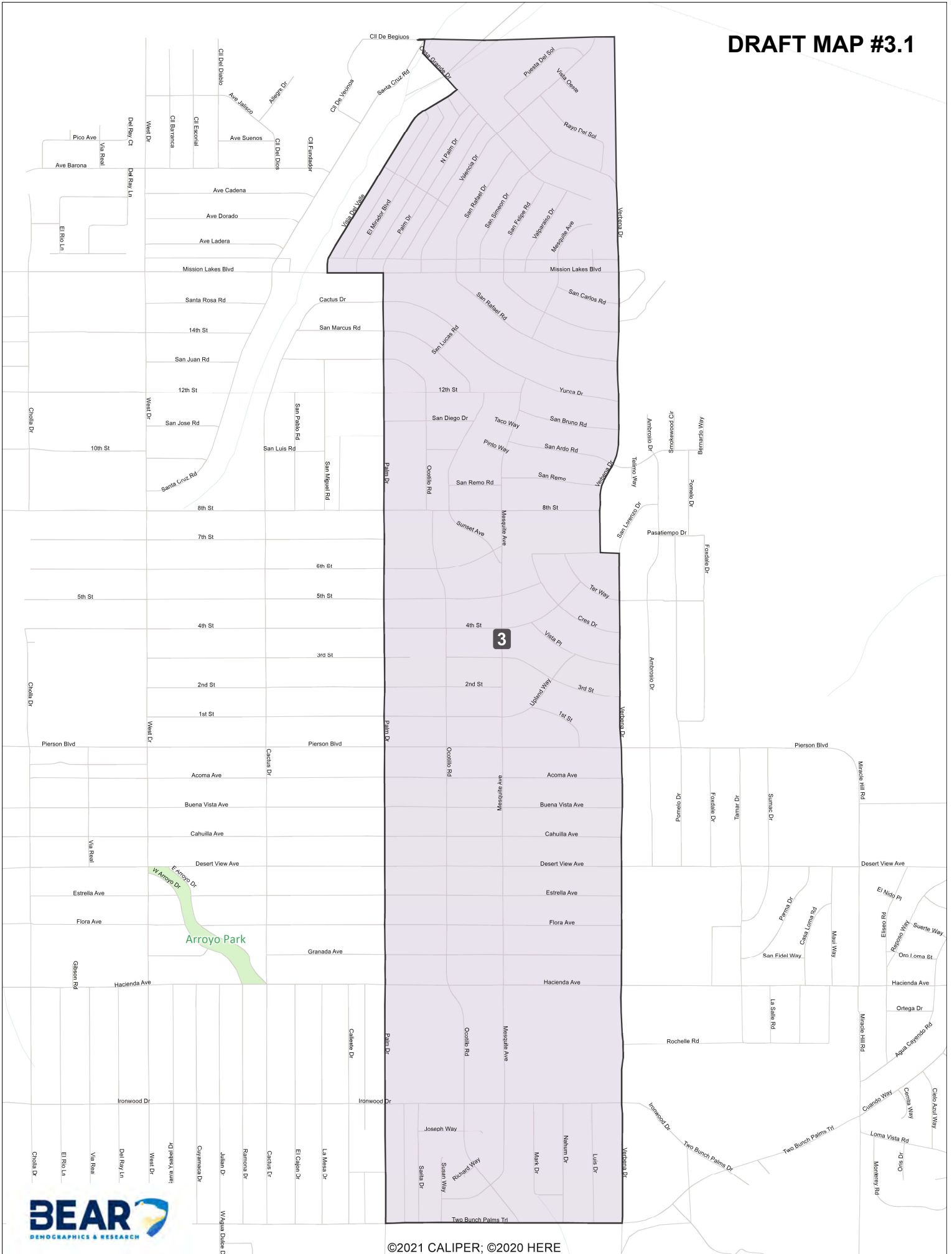


©2021 CALIPER; ©2020 HERE

DRAFT MAP #3.1



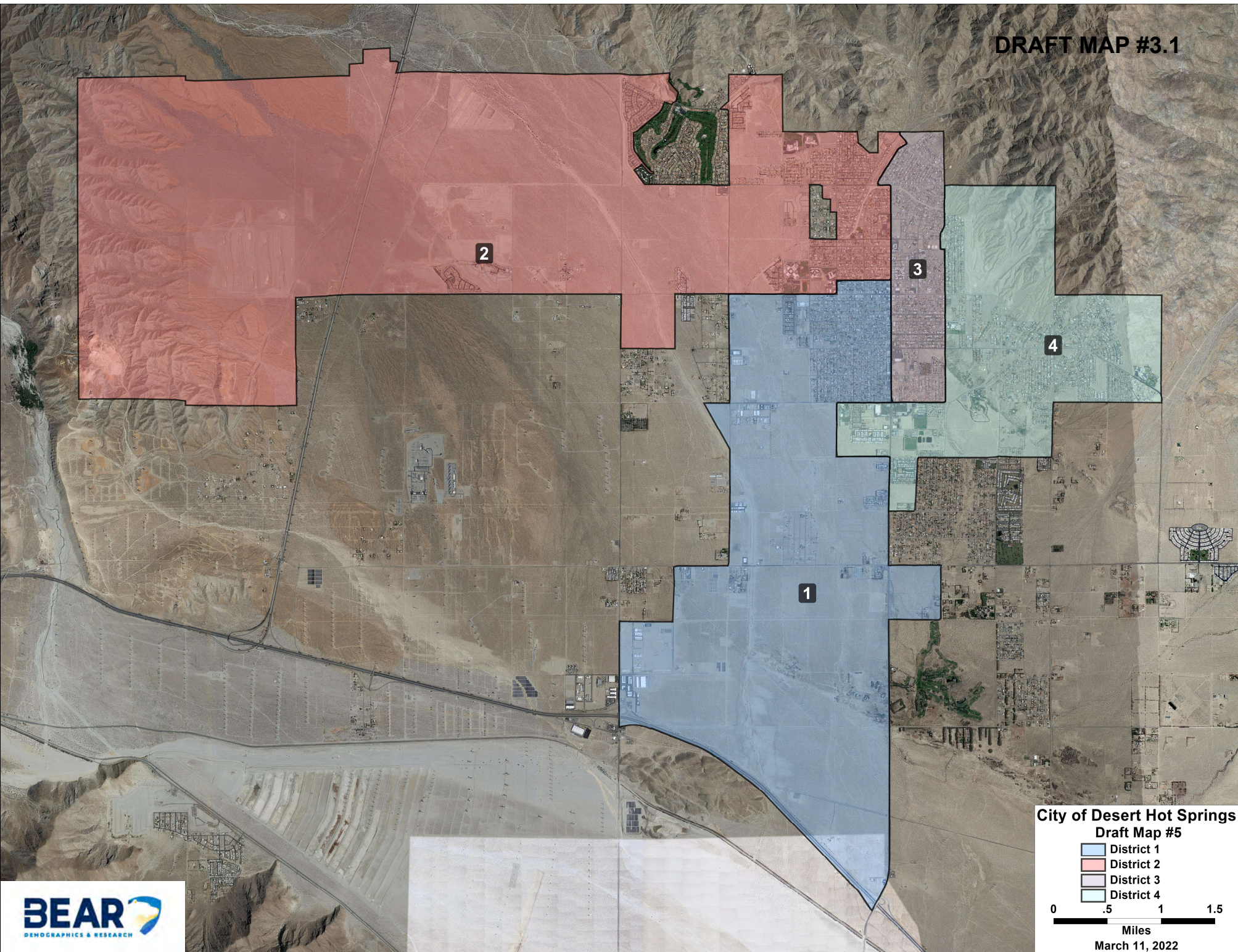
©2021 CALIPER; ©2020 HERE



3

Arroyo Park





2

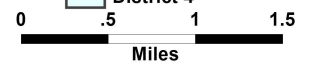
3

4

1

**City of Desert Hot Springs
Draft Map #5**

- District 1
- District 2
- District 3
- District 4



March 11, 2022

Desert Hot Springs Draft Map 3.1

	2020 Census State Adjusted Population											2020 Census Unadjusted
	Population	Deviation	% Deviation	Latino	White	Black	American Indian	Asian	Hawaiian Pacific Islander	Other Race	Multi Minority Race	Population
1	8205	18	0.2%	74.2%	15.4%	6.6%	0.9%	1.4%	0.1%	0.9%	0.5%	8141
2	7797	-390	-4.8%	51.3%	33.7%	8.4%	1.6%	3.3%	0.3%	0.9%	0.6%	7761
3	8296	109	1.3%	63.5%	21.4%	9.6%	1.5%	2.2%	0.3%	0.9%	0.6%	8218
4	8449	262	3.2%	55.2%	28.8%	9.6%	1.1%	3.2%	0.3%	1.2%	0.7%	8392
City	32747			61.1%	24.7%	8.5%	1.3%	2.5%	0.2%	1.0%	0.6%	32512

	2020 Census State Adjusted Voting Age Population								2019 Tabulation Citizen Voting Age Population				
	Latino	White	Black	American Indian	Asian	Hawaiian Pacific Islander	Other Race	Multi Minority Race	Latino	White	Black	Asian	All Other
1	70.6%	18.6%	6.6%	0.9%	1.7%	0.1%	0.8%	0.6%	51.7%	29.7%	14.3%	3.4%	0.7%
2	45.8%	39.1%	7.8%	1.9%	3.6%	0.3%	0.9%	0.6%	35.6%	49.1%	10.9%	3.3%	1.1%
3	58.9%	25.9%	9.1%	1.6%	2.7%	0.3%	1.0%	0.5%	36.9%	43.8%	14.7%	2.6%	1.9%
4	49.4%	35.1%	8.4%	1.3%	3.7%	0.3%	1.2%	0.6%	32.8%	46.7%	14.9%	3.5%	2.2%
City	56.0%	29.8%	8.0%	1.4%	3.0%	0.2%	1.0%	0.6%	38.8%	42.7%	13.8%	3.2%	1.5%

	2019 American Community Survey Socio-economic Characteristics												
District	Household Income				Income Below Poverty	Education Level			Owner Occupied Housing	Language Spoken at Home			
	Less than \$35K	\$35K to \$74,999	\$75K to \$149,999	\$150K or More		No High School Diploma	No College Degree	Any College Degree		English Only	Spanish	Asian Language	Other Language
1	56.7%	32.4%	10.3%	0.6%	35.4%	34.8%	48.3%	16.9%	44.5%	43.8%	50.4%	2.7%	3.0%
2	42.2%	32.7%	20.3%	4.9%	25.1%	17.6%	60.4%	21.9%	57.1%	70.1%	25.9%	1.7%	2.3%
3	56.5%	25.1%	15.2%	3.3%	32.2%	26.5%	59.2%	14.3%	32.4%	63.6%	33.2%	1.9%	1.4%
4	48.3%	33.5%	16.1%	2.2%	27.1%	24.2%	54.7%	21.1%	49.9%	50.1%	46.5%	1.6%	1.9%
City	51.0%	30.9%	15.4%	2.7%	30.1%	25.9%	55.6%	18.5%	45.8%	56.2%	39.7%	2.0%	2.1%