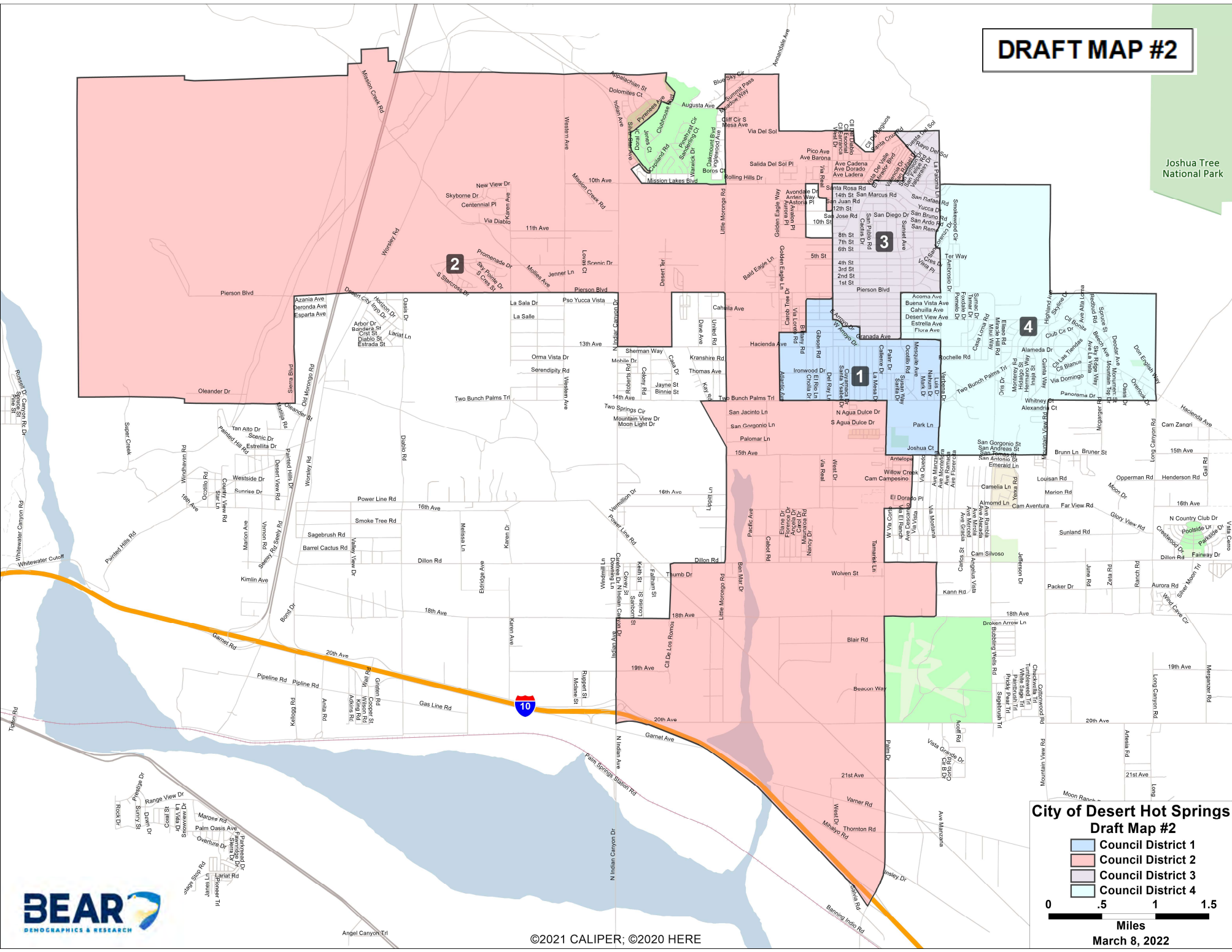


# DRAFT MAP #2

# DRAFT MAP #2

Joshua Tree National Park



## City of Desert Hot Springs Draft Map #2

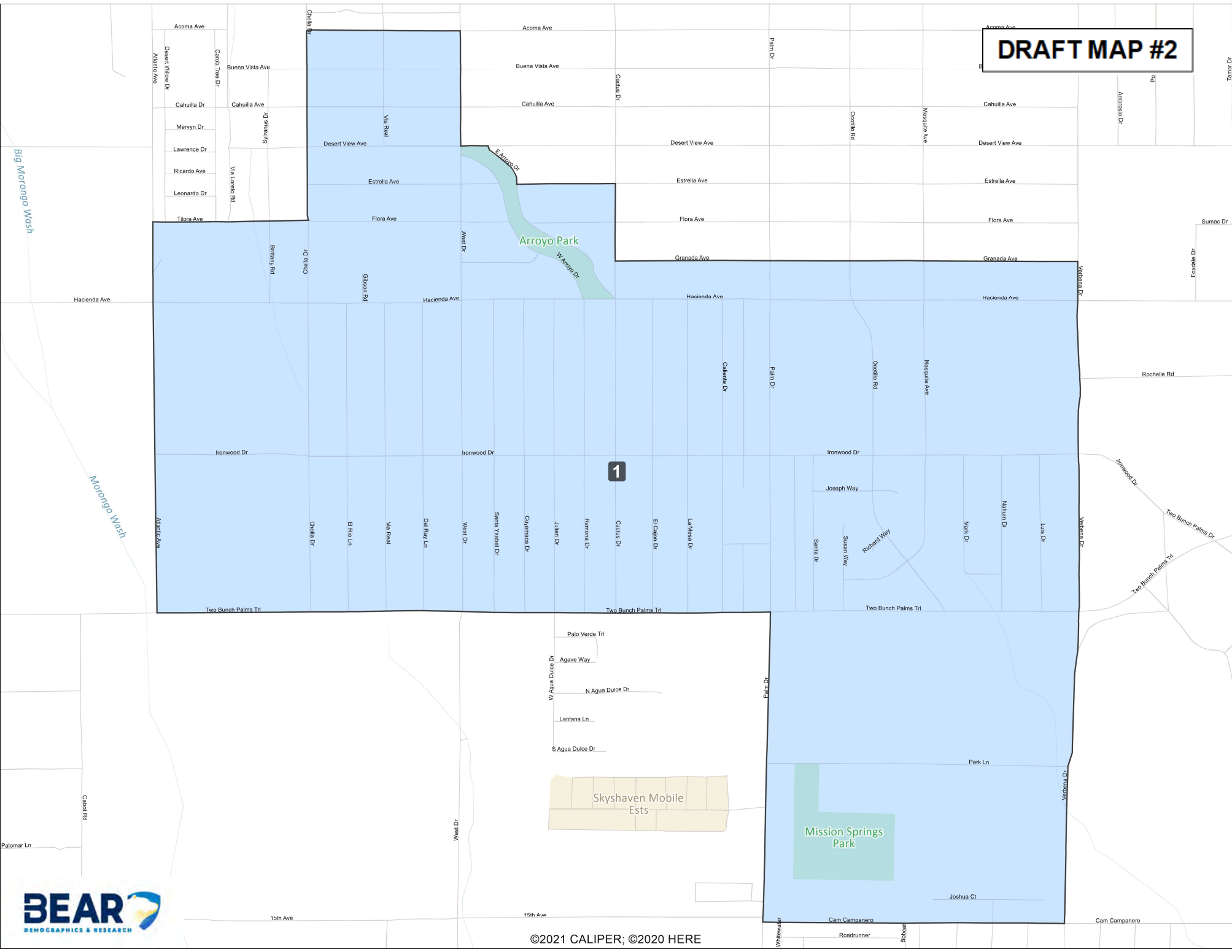
- Council District 1
- Council District 2
- Council District 3
- Council District 4



©2021 CALIPER; ©2020 HERE

March 8, 2022

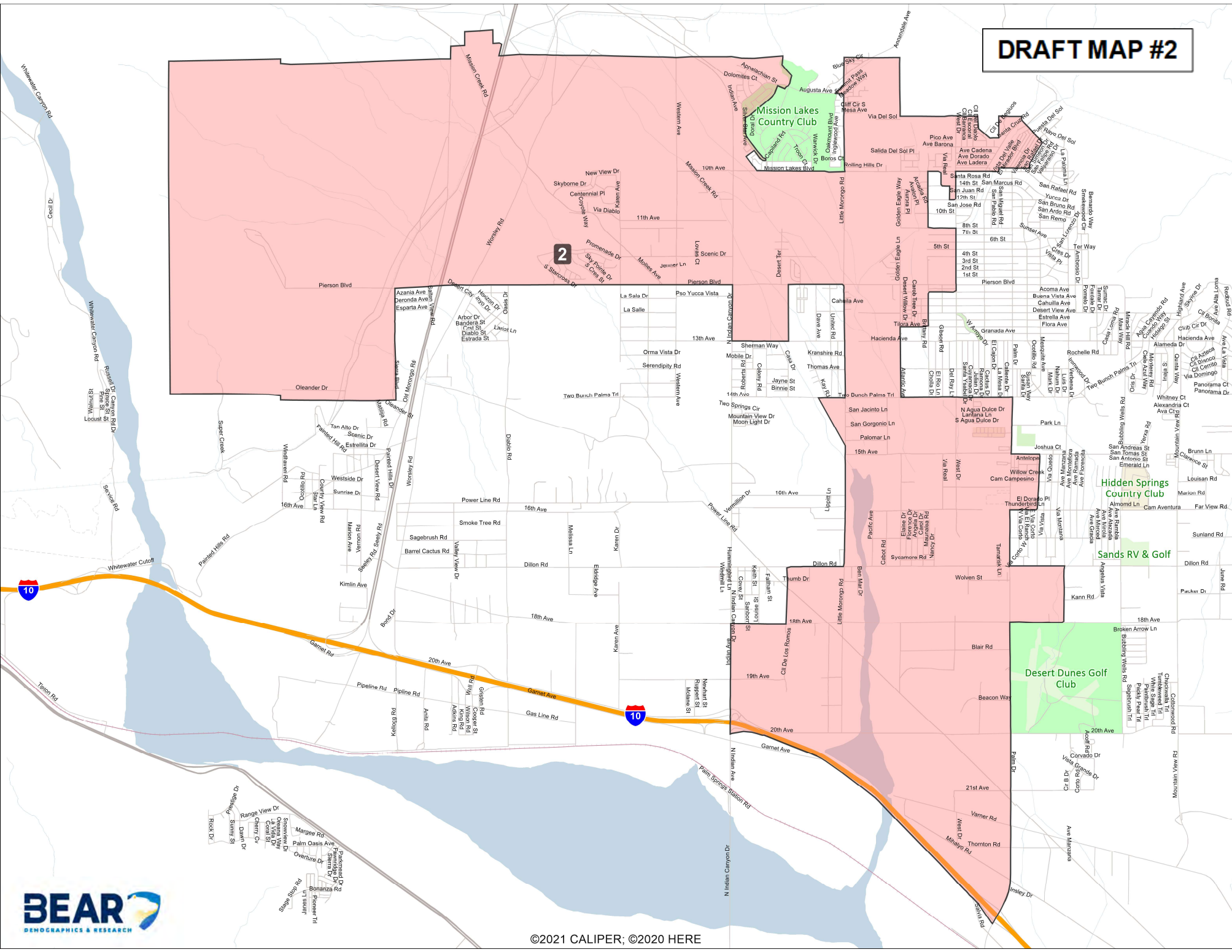
# DRAFT MAP #2



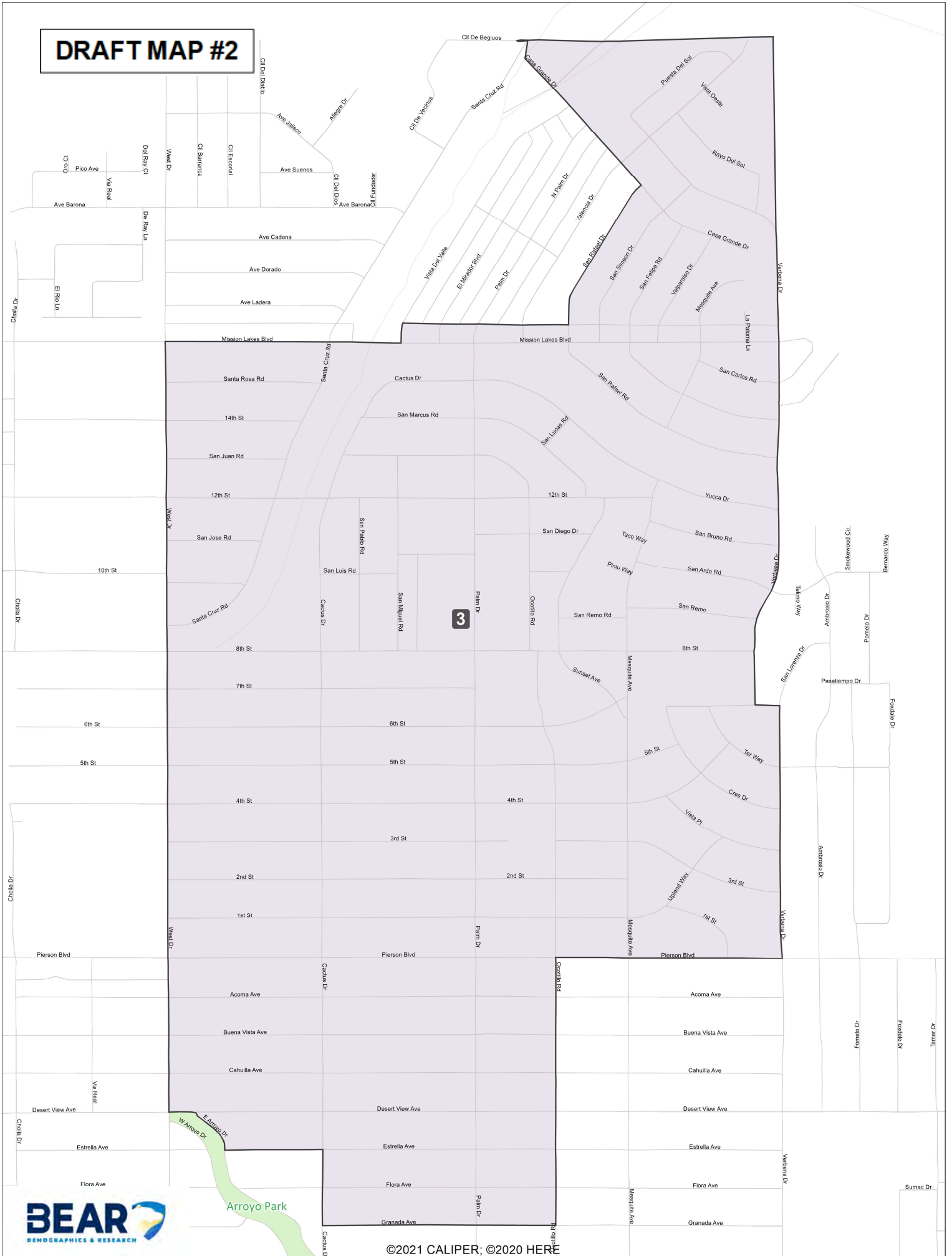
1



# DRAFT MAP #2



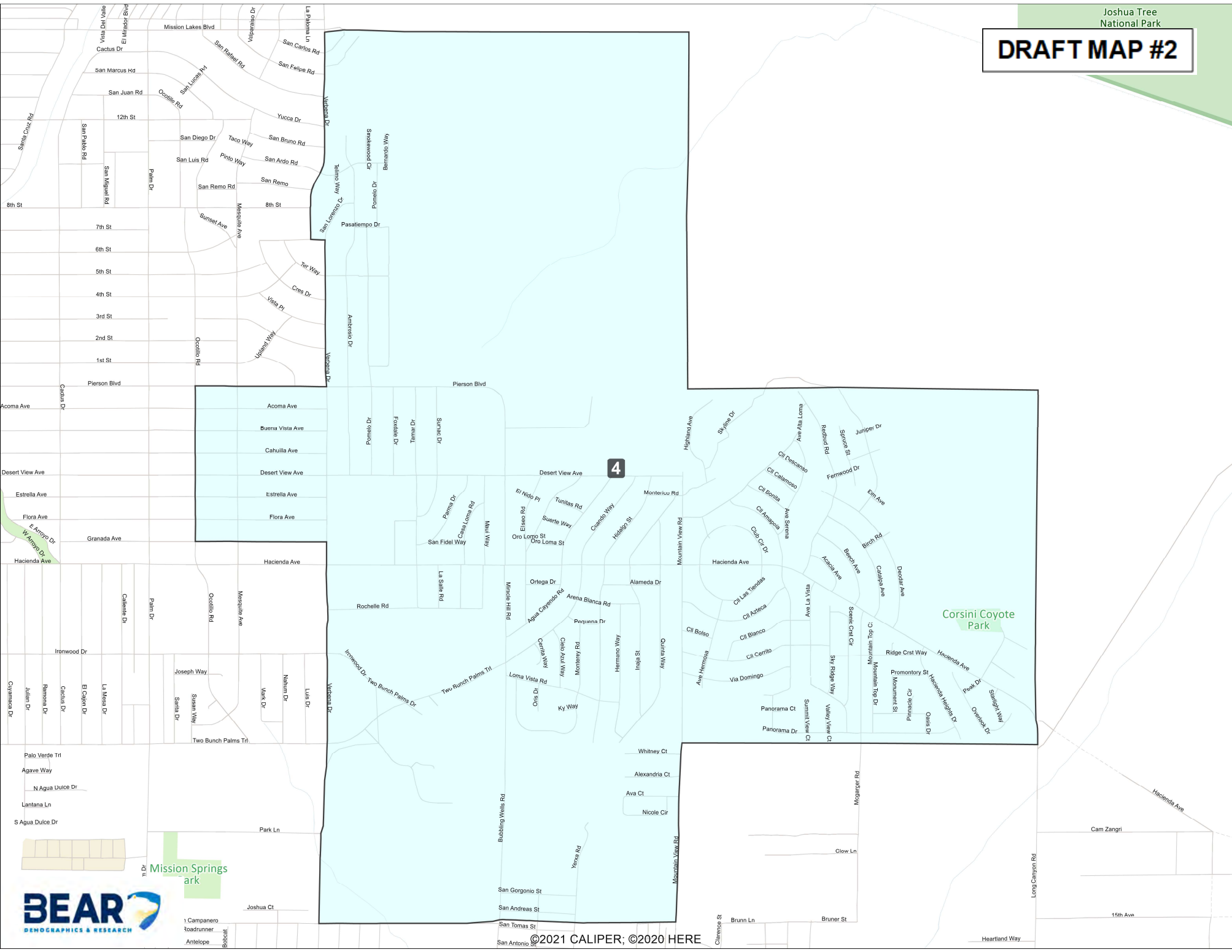
# DRAFT MAP #2



Arroyo Park

©2021 CALIPER; ©2020 HERE

# DRAFT MAP #2



4

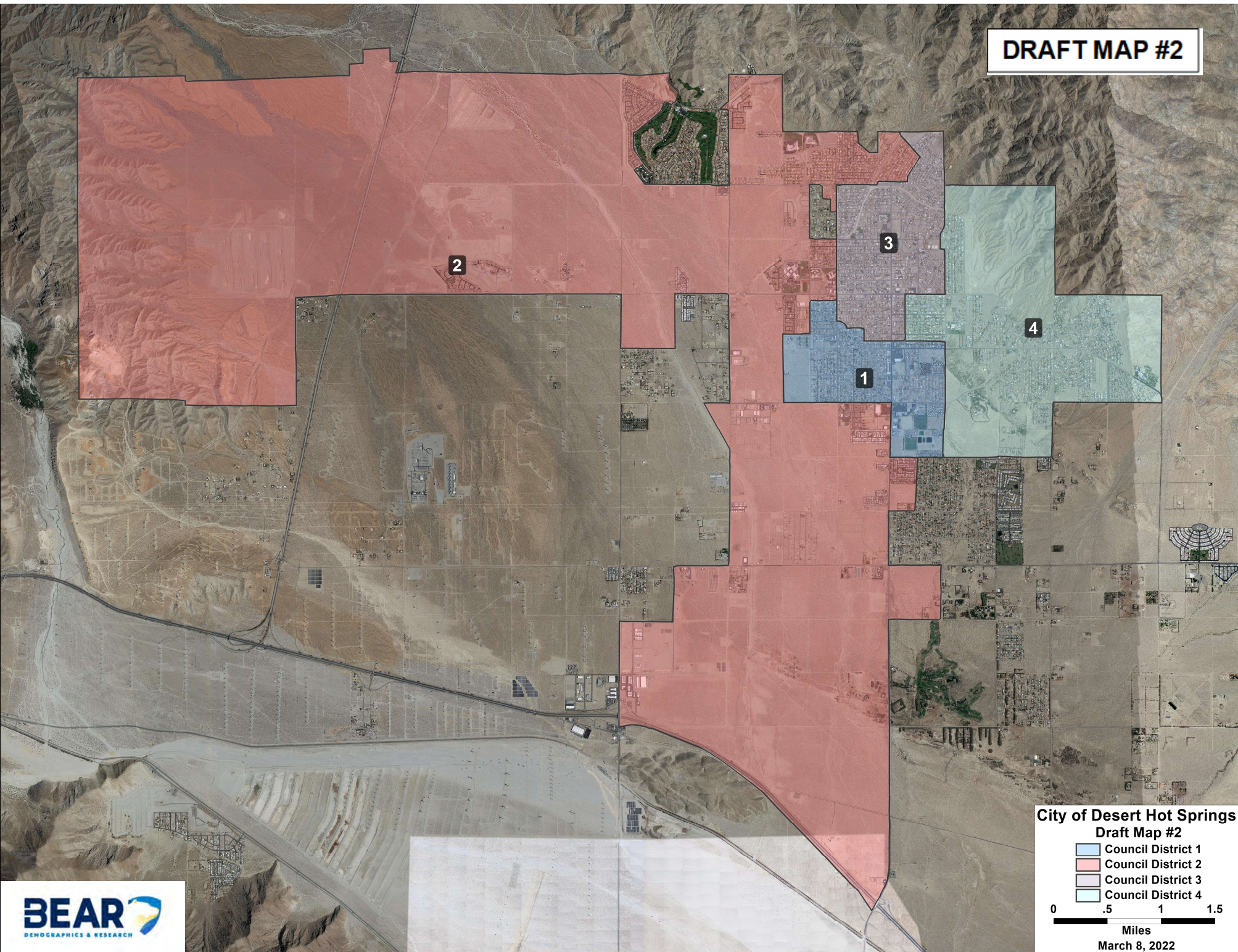
Corsini Coyote Park

Mission Springs Park



1 Campanero  
Roadrunner  
Antelope

**DRAFT MAP #2**



2

3

1

4

**City of Desert Hot Springs  
Draft Map #2**

-  Council District 1
-  Council District 2
-  Council District 3
-  Council District 4



March 8, 2022



## Desert Hot Springs Draft Map 2

	2020 Census State Adjusted Population											2020 Census Unadjusted
	Population	Deviation	% Deviation	Latino	White	Black	American Indian	Asian	Hawaiian Pacific Islander	Other Race	Multi Minority Race	Population
1	8087	-100	-1.2%	76.4%	13.0%	7.6%	0.7%	1.0%	0.1%	0.6%	0.5%	8010
2	8057	-130	-1.6%	49.6%	36.4%	7.0%	1.5%	3.6%	0.3%	1.0%	0.5%	8025
3	8245	58	0.7%	60.3%	23.8%	9.9%	1.7%	2.3%	0.2%	1.2%	0.7%	8184
4	8358	171	2.1%	58.3%	25.8%	9.6%	1.2%	3.1%	0.3%	1.1%	0.6%	8293
City	32747			61.1%	24.7%	8.5%	1.3%	2.5%	0.2%	1.0%	0.6%	32512

	2020 Census State Adjusted Voting Age Population								2019 Tabulation Citizen Voting Age Population				
	Latino	White	Black	American Indian	Asian	Hawaiian Pacific Islander	Other Race	Multi Minority Race	Latino	White	Black	Asian	All Other
1	73.2%	15.7%	7.8%	0.8%	1.4%	0.1%	0.5%	0.5%	53.2%	26.0%	16.6%	2.9%	1.3%
2	43.6%	42.3%	6.6%	1.7%	4.0%	0.2%	1.1%	0.5%	29.7%	55.5%	8.4%	4.6%	1.7%
3	55.1%	28.8%	9.2%	1.9%	2.8%	0.3%	1.2%	0.7%	40.1%	40.9%	15.3%	2.6%	1.0%
4	53.6%	31.1%	8.4%	1.3%	3.5%	0.4%	1.2%	0.6%	34.9%	45.3%	15.3%	2.7%	2.0%
City	56.0%	29.8%	8.0%	1.4%	3.0%	0.2%	1.0%	0.6%	38.8%	42.7%	13.8%	3.2%	1.5%

District	2019 American Community Survey Socio-economic Characteristics												
	Household Income				Income Below Poverty	Education Level			Owner Occupied Housing	Language Spoken at Home			
	Less than \$35K	\$35K to \$74,999	\$75K to \$149,999	\$150K or More		No High School Diploma	No College Degree	Any College Degree		English Only	Spanish	Asian Language	Other Language
1	56.1%	29.2%	13.7%	1.1%	34.9%	33.2%	51.2%	15.6%	34.6%	49.8%	45.5%	2.5%	2.3%
2	42.5%	32.7%	21.2%	3.6%	25.6%	20.4%	56.1%	23.5%	65.6%	59.7%	35.7%	2.3%	2.4%
3	54.5%	29.8%	11.8%	3.8%	31.7%	26.6%	58.1%	15.3%	42.3%	61.6%	34.5%	1.7%	2.3%
4	51.0%	31.8%	14.9%	2.2%	28.2%	23.9%	56.7%	19.4%	41.1%	54.3%	42.6%	1.5%	1.6%
City	51.0%	30.9%	15.4%	2.7%	30.1%	25.9%	55.6%	18.5%	45.8%	56.2%	39.7%	2.0%	2.1%