



# BEAR

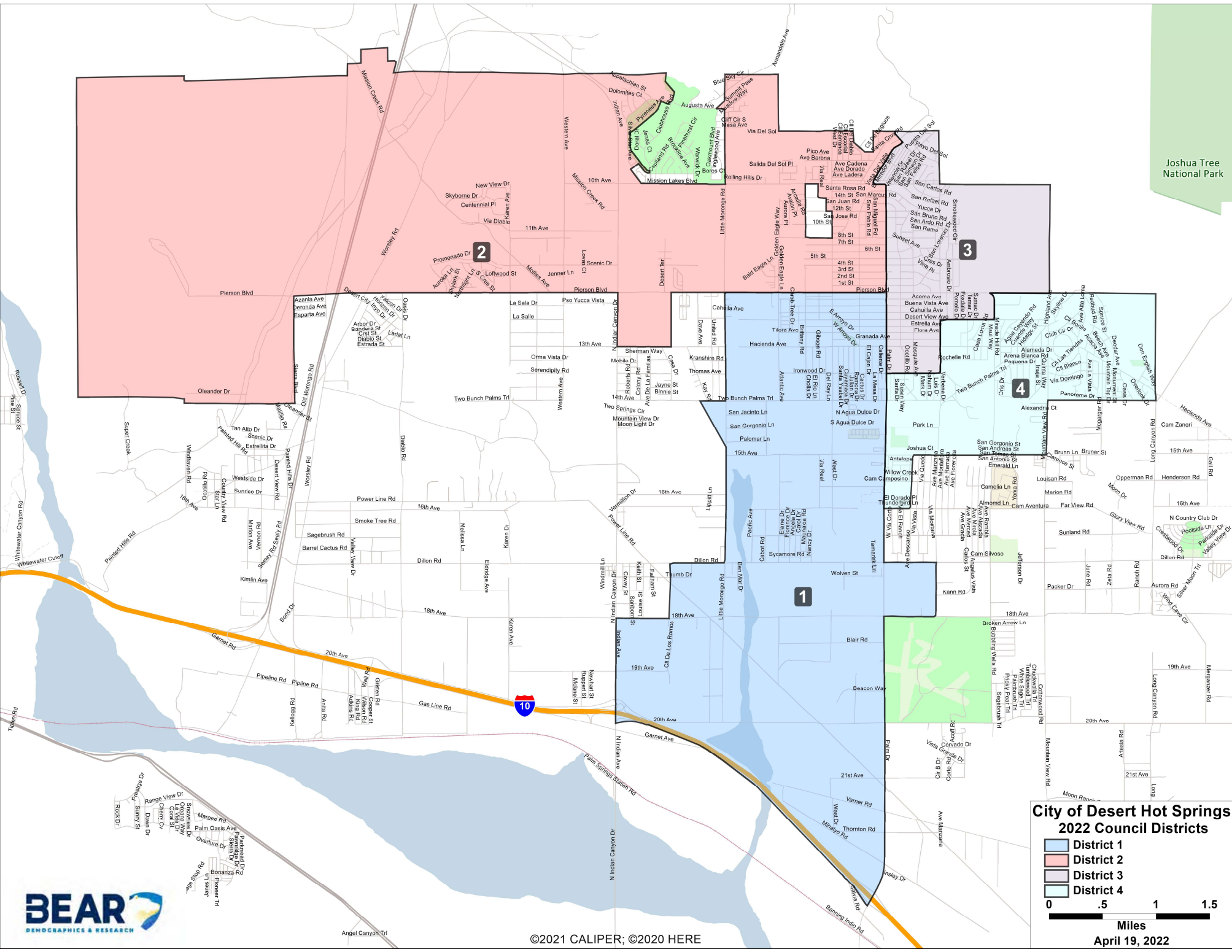
DEMOGRAPHICS & RESEARCH

City of  
**DESERT HOT SPRINGS**

2022 Council District Boundaries

**FINAL MAP**

April 19, 2022



Joshua Tree National Park

**City of Desert Hot Springs  
2022 Council Districts**

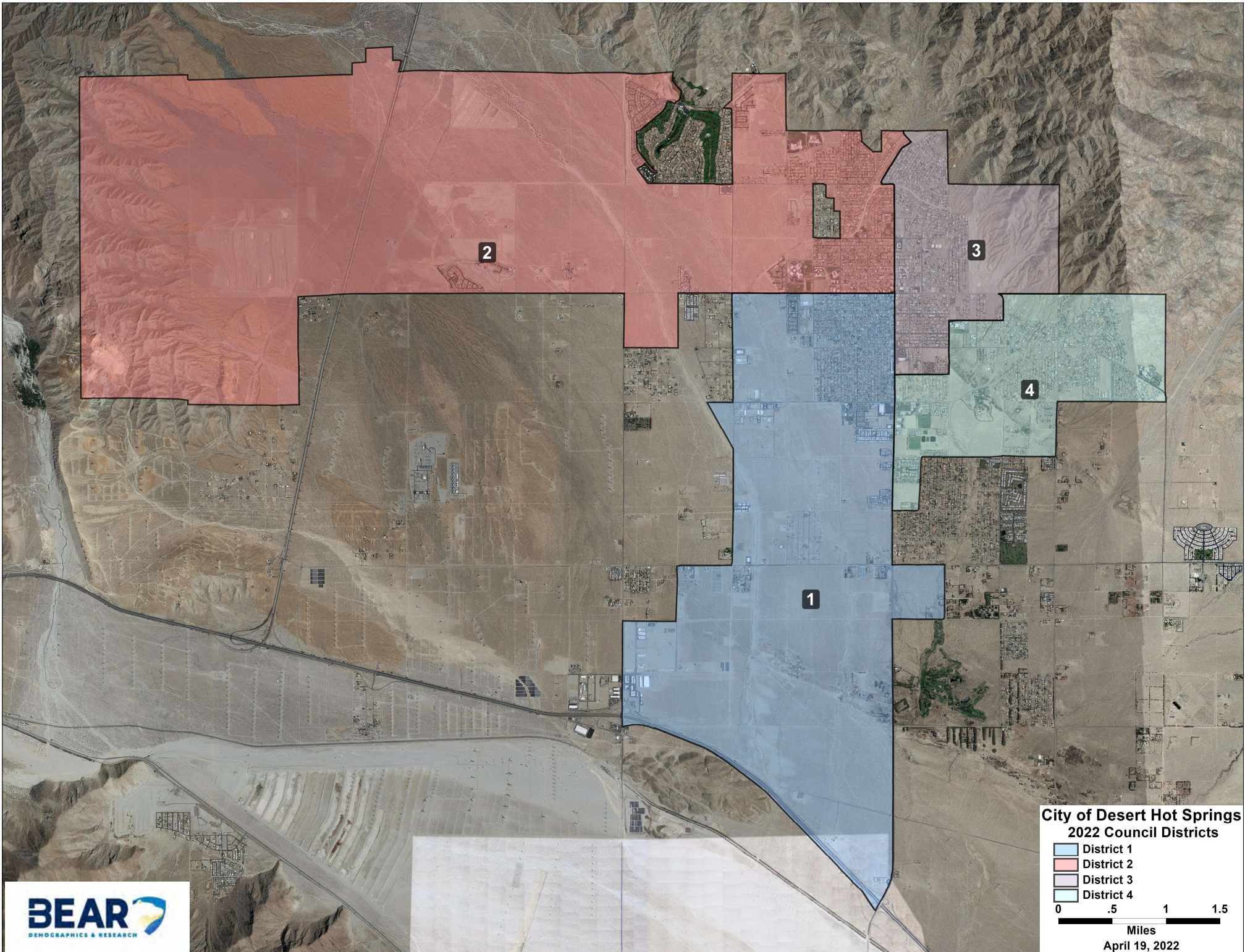
- District 1
- District 2
- District 3
- District 4







April 19, 2022



©2021 CALIPER; ©2020 HERE

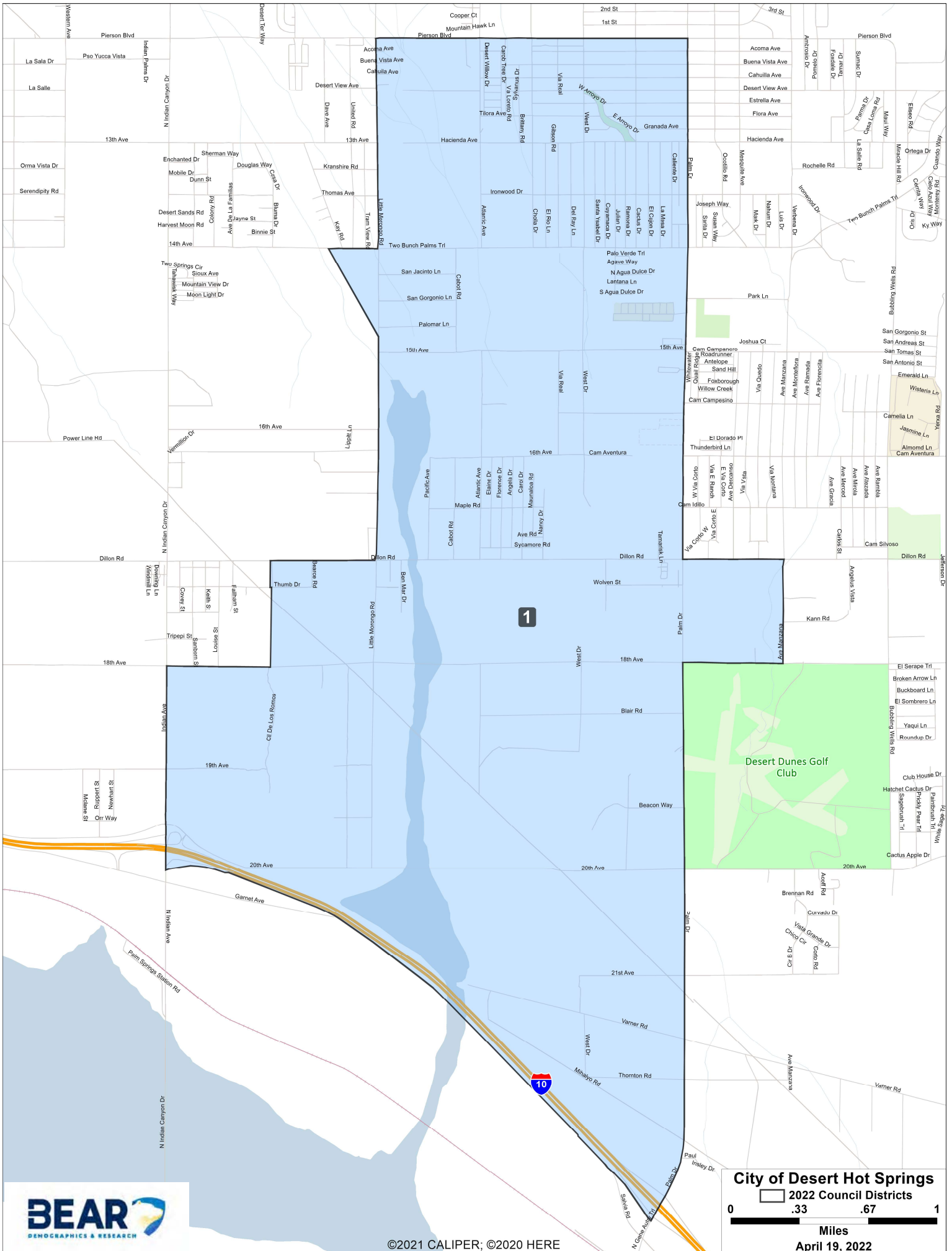


**City of Desert Hot Springs  
2022 Council Districts**

-  District 1
-  District 2
-  District 3
-  District 4

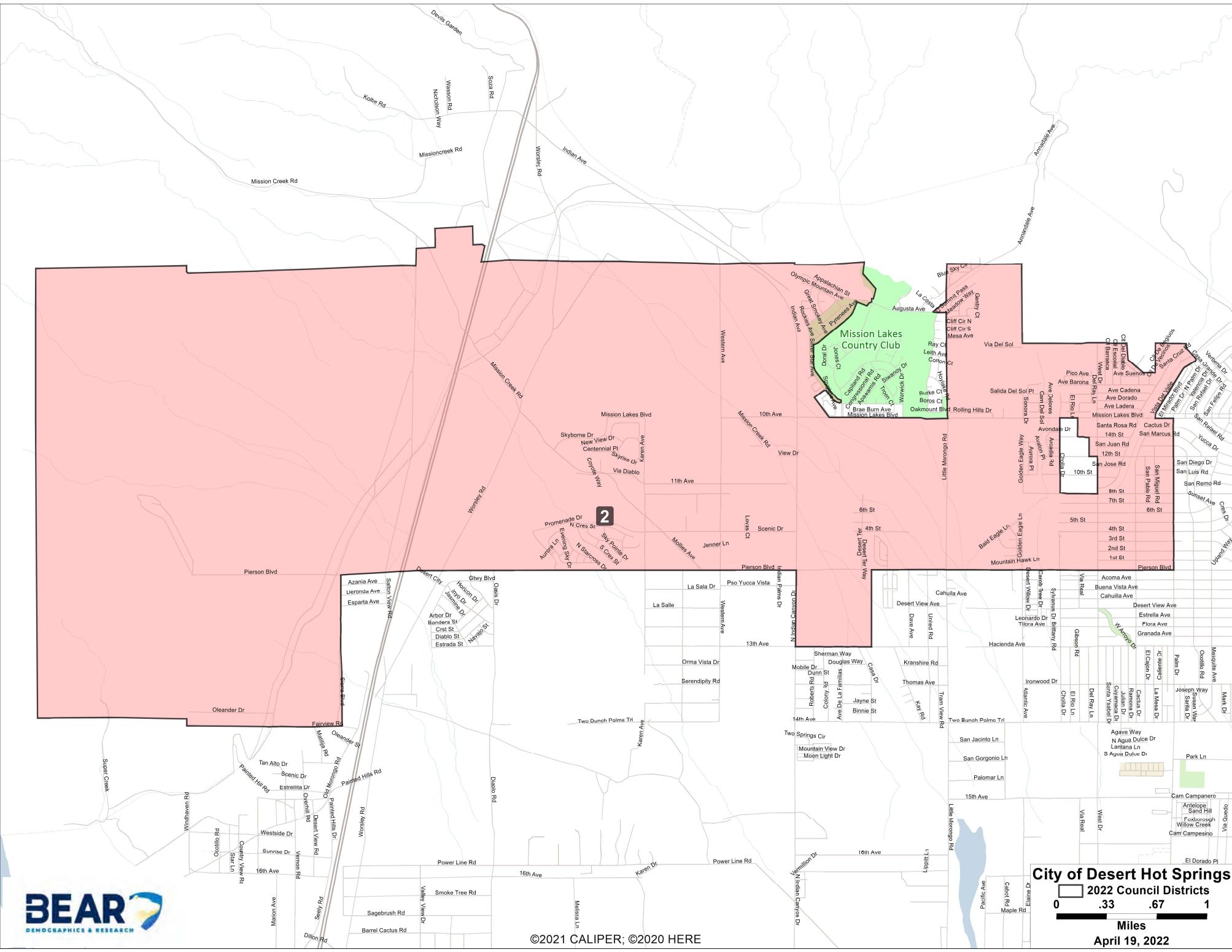


April 19, 2022



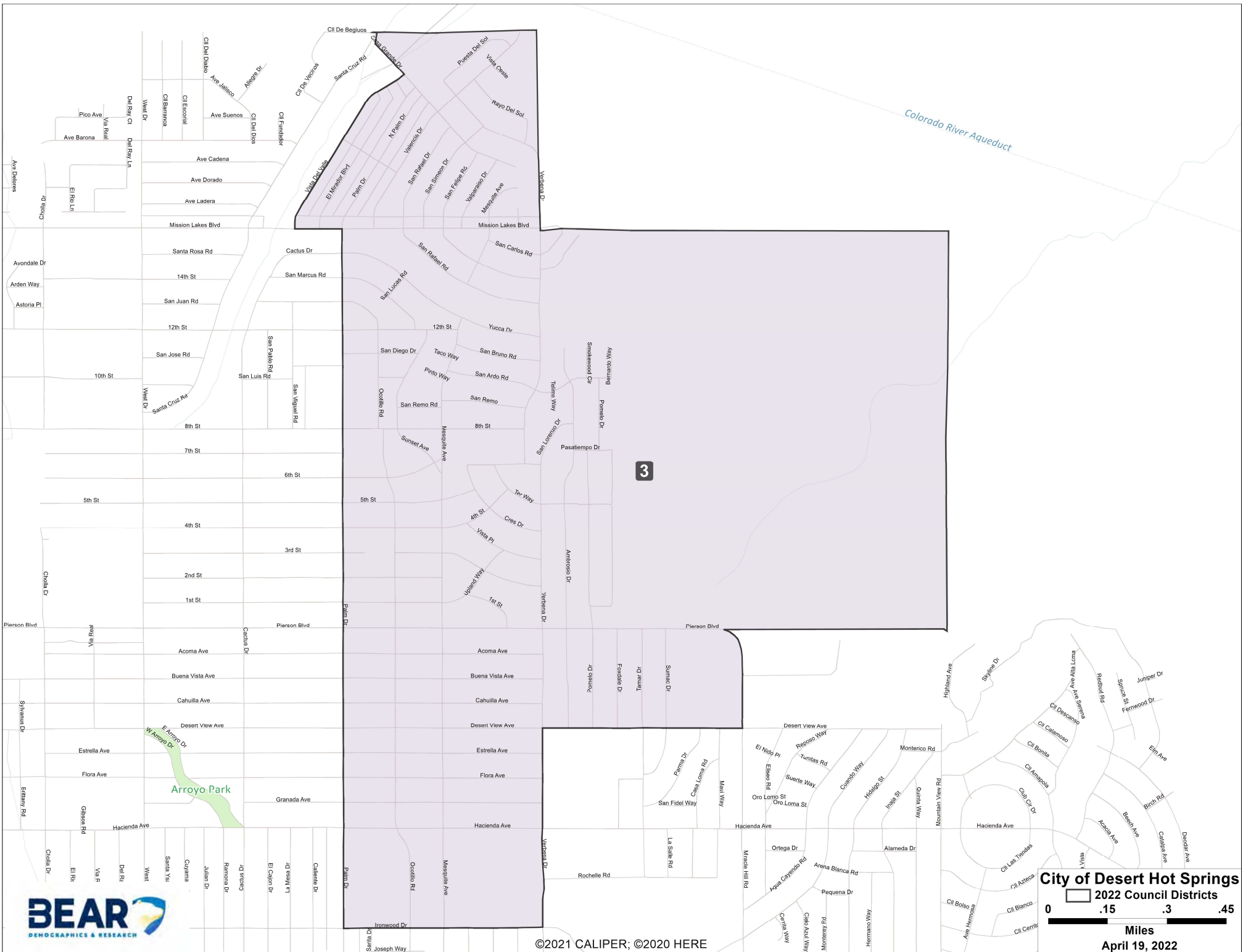
©2021 CALIPER; ©2020 HERE

**City of Desert Hot Springs**  
 2022 Council Districts  
 0 .33 .67 1  
 Miles  
 April 19, 2022



©2021 CALIPER; ©2020 HERE

**City of Desert Hot Springs**  
 2022 Council Districts  
 0 .33 .67 1  
 Miles  
 April 19, 2022



©2021 CALIPER; ©2020 HERE

**City of Desert Hot Springs**  
 2022 Council Districts

0 .15 .3 .45  
 Miles

April 19, 2022



## Desert Hot Springs 2022 Council Districts

	2020 Census State Adjusted Population											2020 Census Unadjusted
	Population	Deviation	% Deviation	Latino	White	Black	American Indian	Asian	Hawaiian Pacific Islander	Other Race	Multi Minority Race	Population
1	8222	35	0.4%	72.5%	17.5%	6.0%	0.9%	1.5%	0.1%	0.9%	0.5%	8161
2	8253	66	0.8%	51.9%	32.6%	8.9%	1.6%	3.2%	0.3%	0.9%	0.6%	8212
3	8139	-48	-0.6%	59.8%	24.7%	9.3%	1.7%	2.5%	0.3%	1.0%	0.7%	8070
4	8133	-54	-0.7%	60.4%	24.0%	9.9%	0.9%	2.8%	0.3%	1.1%	0.7%	8069
City	32747			61.1%	24.7%	8.5%	1.3%	2.5%	0.2%	1.0%	0.6%	32512

	2020 Census State Adjusted Voting Age Population								2019 Tabulation Citizen Voting Age Population				
	Latino	White	Black	American Indian	Asian	Hawaiian Pacific Islander	Other Race	Multi Minority Race	Latino	White	Black	Asian	All Other
1	68.0%	21.5%	6.1%	0.9%	1.9%	0.1%	0.8%	0.6%	47.6%	33.4%	13.2%	4.4%	1.2%
2	46.4%	38.1%	8.2%	1.9%	3.6%	0.3%	0.9%	0.6%	36.8%	47.9%	11.1%	3.1%	1.1%
3	55.1%	29.5%	8.7%	1.8%	3.1%	0.3%	1.0%	0.6%	35.0%	48.3%	12.0%	2.7%	1.9%
4	55.0%	29.6%	8.9%	1.1%	3.3%	0.3%	1.2%	0.5%	36.6%	40.1%	18.8%	2.7%	1.9%
City	56.0%	29.8%	8.0%	1.4%	3.0%	0.2%	1.0%	0.6%	38.8%	42.7%	13.8%	3.2%	1.5%

	2019 American Community Survey Socio-economic Characteristics												
District	Household Income				Income Below Poverty	Education Level			Owner Occupied Housing	Language Spoken at Home			
	Less than \$35K	\$35K to \$74,999	\$75K to \$149,999	\$150K or More		No High School Diploma	No College Degree	Any College Degree		English Only	Spanish	Asian Language	Other Language
1	56.3%	32.5%	10.8%	0.4%	35.0%	34.9%	47.7%	17.4%	47.2%	42.3%	51.8%	2.9%	3.0%
2	43.3%	32.4%	19.5%	4.9%	25.8%	18.2%	60.3%	21.5%	55.5%	69.6%	26.5%	1.7%	2.2%
3	55.2%	26.5%	15.0%	3.3%	31.3%	25.1%	60.6%	14.3%	35.3%	64.7%	32.0%	1.8%	1.5%
4	49.1%	32.5%	16.2%	2.2%	27.8%	25.1%	53.8%	21.2%	45.7%	50.2%	46.6%	1.6%	1.7%
City	51.0%	30.9%	15.4%	2.7%	30.1%	25.9%	55.6%	18.5%	45.8%	56.2%	39.7%	2.0%	2.1%