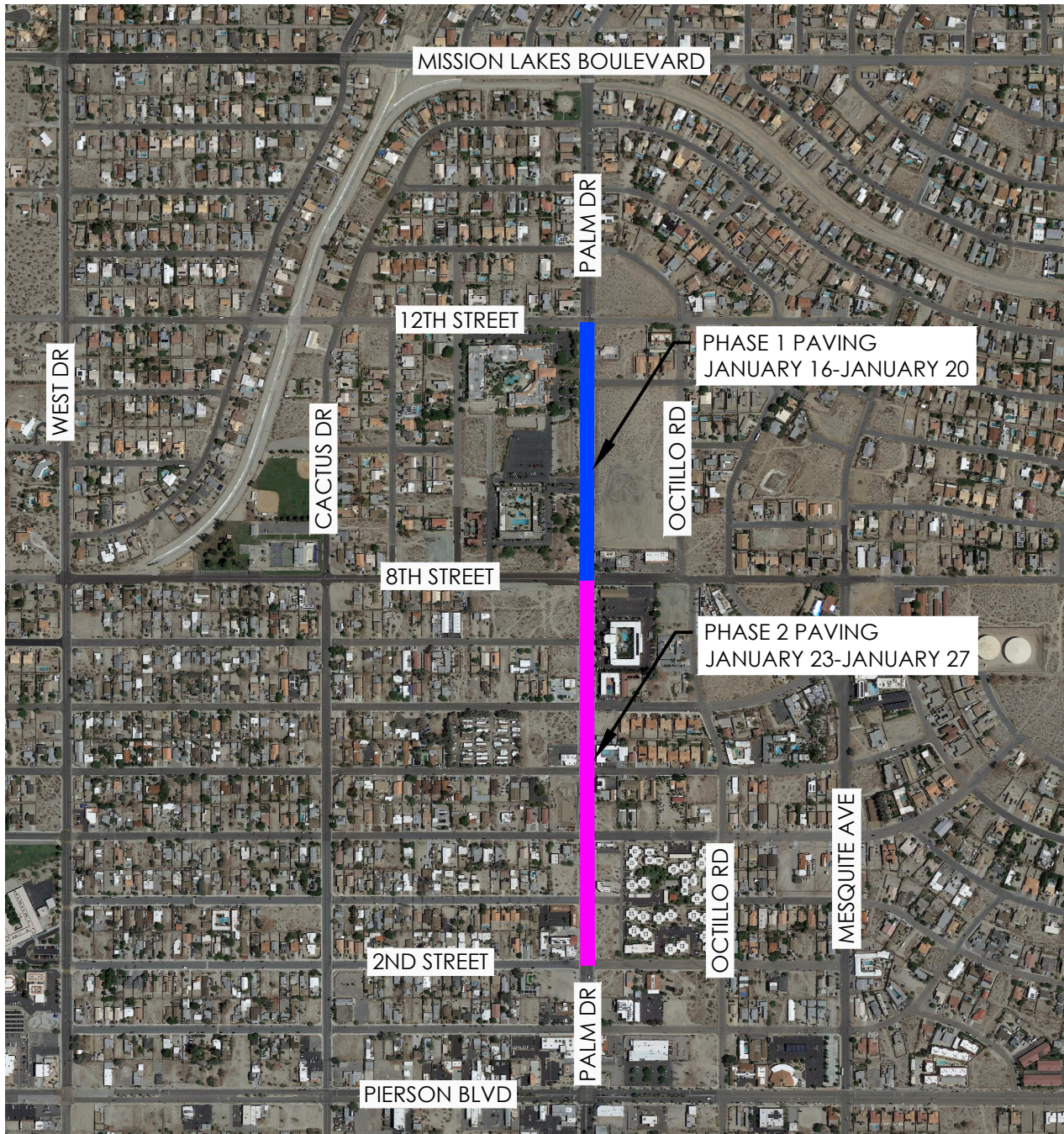


PALM DRIVE NORTH STREET PAVEMENT ROAD CLOSURES



- Phase 1 between 8th Street and 12th Street will have full 24-hour road closures from January 16th to January 20th.
- Phase 2 between 2nd Street and 8th Street will have full 24-hour road closures from January 23rd to January 27th.
- Access will be for local residents and businesses ONLY.

IF YOU HAVE ANY QUESTIONS,
PLEASE CONTACT THE CITY
ENGINEER, JILLEN FERRIS, AT
(760)-329-6411,
EXT. 220 OR VIA EMAIL AT
JFERRIS@CITYOFDHS.ORG

DESERT HOT SPRINGS

