

ROUTE NO.	SECTION	COUNTY	TOTAL SHEETS	SHEET NO.
		EFFINGHAM	12	1
		ILLINOIS		

# SANITARY SEWER IMPROVEMENTS

## CITY OF EFFINGHAM

### EFFINGHAM COUNTY, ILLINOIS



**PROJECT LOCATION**



### INDEX OF SHEETS

- 1 TITLE SHEET
- 2 SHEET LAYOUT
- 3 STANDARD DETAIL SHEETS
- 4 & 5 QUANTITIES & NOTES SHEETS
- 6-12 PLAN SHEETS



DESIGN STAGE J.U.L.I.E. DIG NUMBER  
DIG # \_\_\_\_\_

**J.U.L.I.E.**  
JOINT UTILITY LOCATION INFORMATION FOR EXCAVATION  
1-800-892-0123 OR 811

### UTILITY NOTE

THE LOCATIONS OF THOSE BURIED AND ABOVEGROUND UTILITIES SHOWN ARE APPROXIMATE, ARE SHOWN FOR CONTRACTOR INFORMATIONAL USE ONLY, AND ARE NOT TO BE REFERENCED FOR CONSTRUCTION PURPOSES. THE IMPLIED PRESENCE OR ABSENCE OF UTILITIES IS NOT TO BE CONSTRUED BY THE OWNER, ENGINEER, CONTRACTOR, OR SUBCONTRACTORS TO BE AN ACCURATE AND COMPLETE REPRESENTATION OF UTILITIES THAT MAY OR MAY NOT EXIST ON THE CONSTRUCTION SITE. BURIED AND ABOVEGROUND UTILITY LOCATION, IDENTIFICATION, AND MARKING ARE THE SOLE RESPONSIBILITY OF THE CONTRACTOR. REROUTING, DISCONNECTION, PROTECTION, ETC. OF ANY UTILITIES MUST BE COORDINATED BETWEEN THE CONTRACTOR, UTILITY COMPANY, AND OWNER. SITE SAFETY, INCLUDING THE AVOIDANCE OF HAZARDS ASSOCIATED WITH BURIED AND ABOVEGROUND UTILITIES, REMAIN THE SOLE RESPONSIBILITY OF THE CONTRACTOR. CONTRACTOR MUST CONTACT J.U.L.I.E. 48 HOURS PRIOR TO THE BEGINNING OF CONSTRUCTION.

### LOCATION MAP

CITY OF EFFINGHAM

### LENGTH OF PROJECT

SANITARY SEWER IMPROVEMENTS = 5,130 Feet

APPROVED: CITY OF EFFINGHAM

*Stuart M. Kelly* July 2, 2024  
City Administrator Date

*John Keenan* 7/2/2024  
Director of Public Works Date

*Leo R. Beckman* 7/2/24  
City Engineer Date

DRAWN BY:  
TH

CHECKED BY:  
TR

PLANS DATED:  
JUNE 2024

**1**

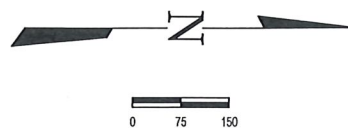
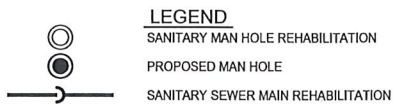
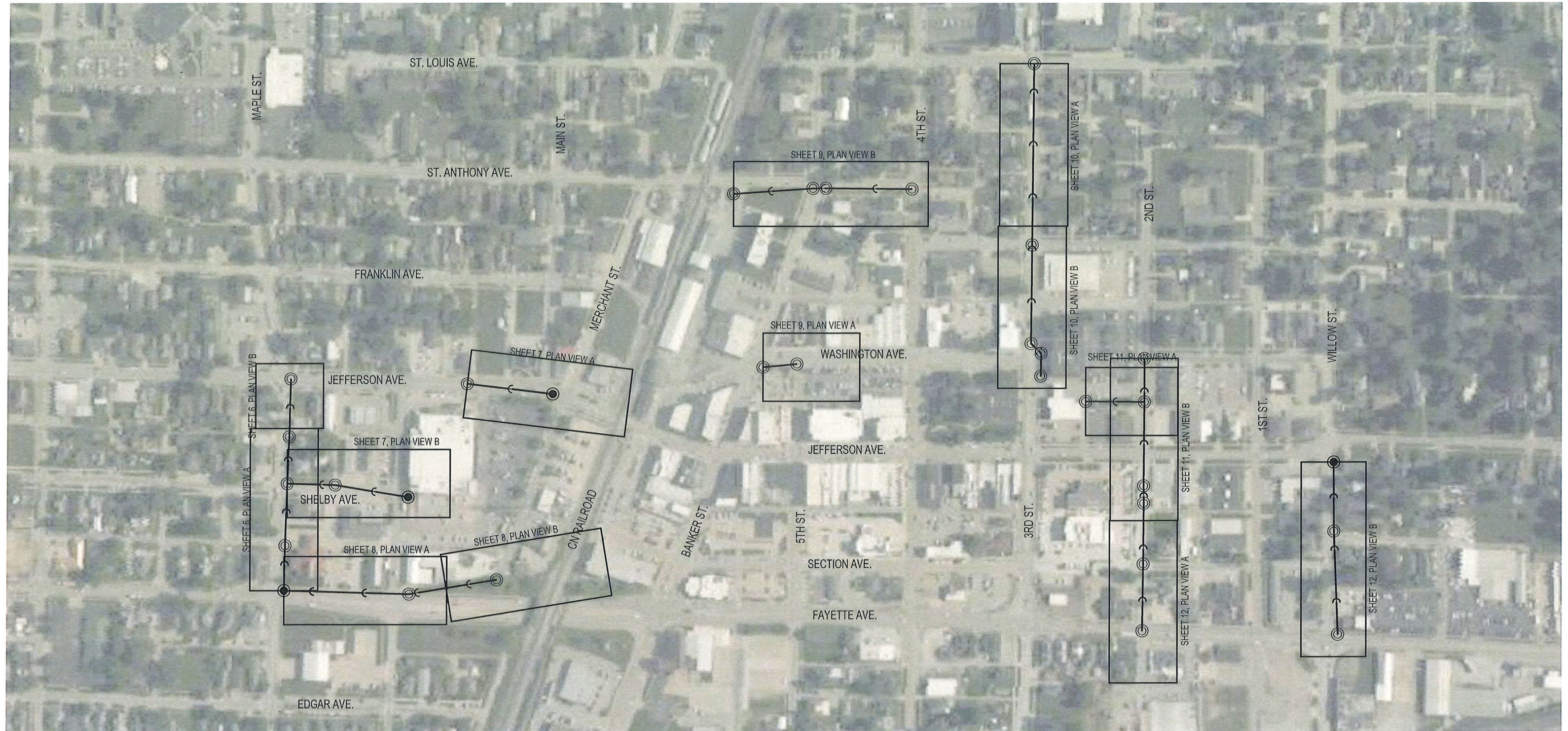
MILANO & GRUNLOH ENGINEERS, LLC  
114 W. WASHINGTON AVE. | PO BOX 897  
EFFINGHAM, IL 62401  
Phone: (217) 347-7262 | (800) 677-2714  
Email: mge@engr.com | www.mge.com  
Web: www.mge.com  
Design Firm #164-003108

S:\2024\121006\DWG\21006-FE.DWG  
SAVE DATE: 7/2/2024 13:41

Leo R. Beckman  
My License Expires 11-30-25

F.B. XXX

P.E. No. 52890



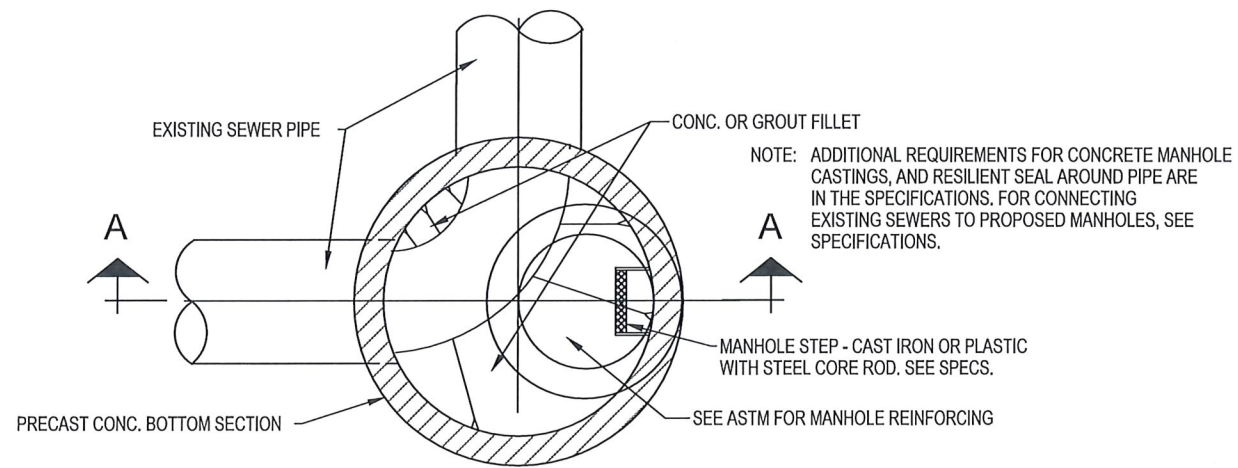
SHEET No.  
**2**

MILANO & GRUNLOH ENGINEERS, LLC  
 114 W. WASHINGTON AVE. | PO BOX 887  
 EFFINGHAM, IL 62401  
 Phone: (217) 347-7282 | (800) 677-2714  
 Email: [mgeengineers@mgeengineers.com](mailto:mgeengineers@mgeengineers.com)  
 Web: [www.mgeengineers.com](http://www.mgeengineers.com)  
 Design Firm #164-003106

S:\2021\21006\DWG\21006-FE.DWG  
 SAVE DATE: 7/2/2024 13:41

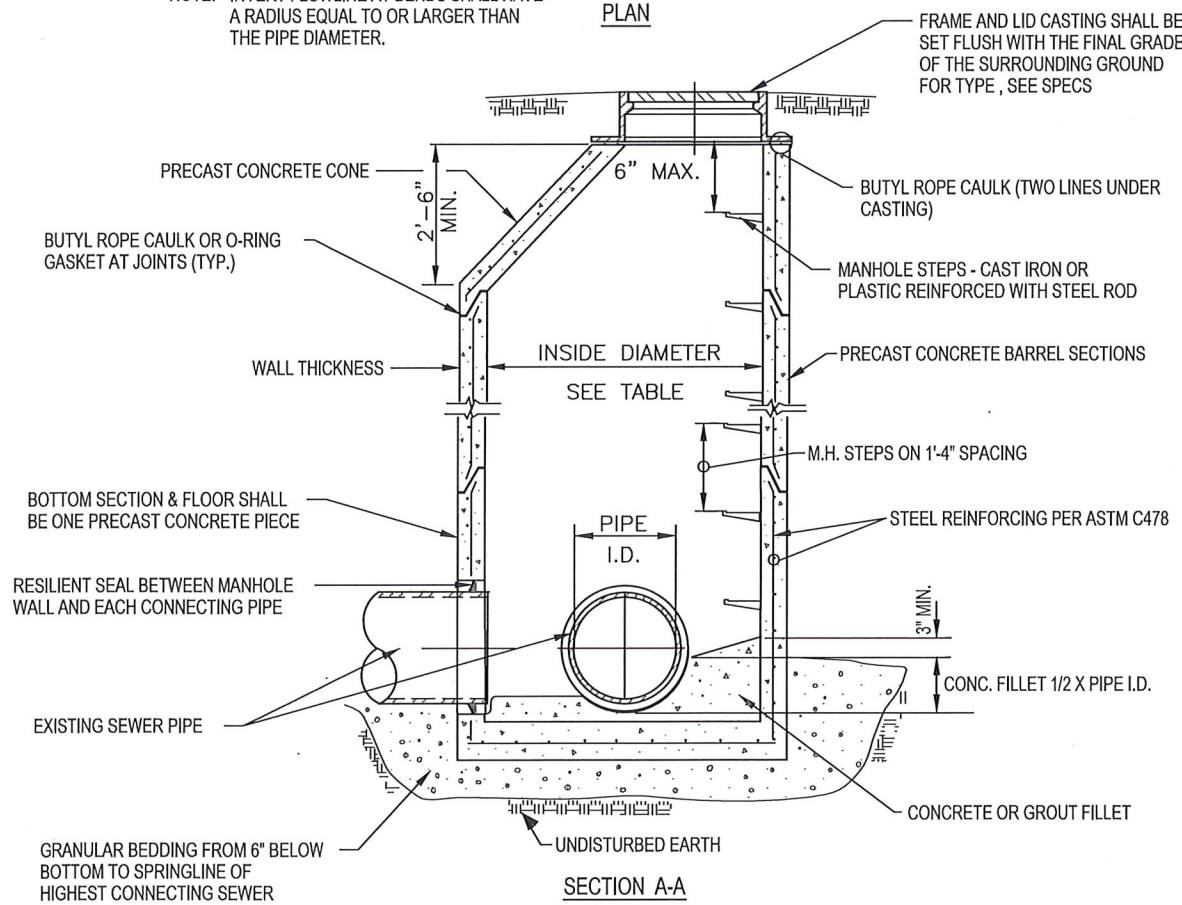
PLAN SHEET INDEX  
 SANITARY SEWER IMPROVEMENTS  
 CITY OF EFFINGHAM  
 EFFINGHAM COUNTY, IL

F.B.XXX



NOTE: INVERT FLOWLINE AT BENDS SHALL HAVE A RADIUS EQUAL TO OR LARGER THAN THE PIPE DIAMETER.

PLAN

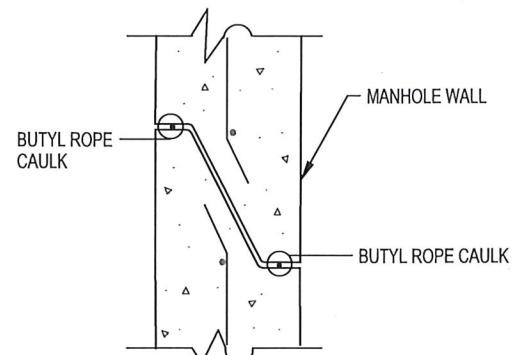


SECTION A-A

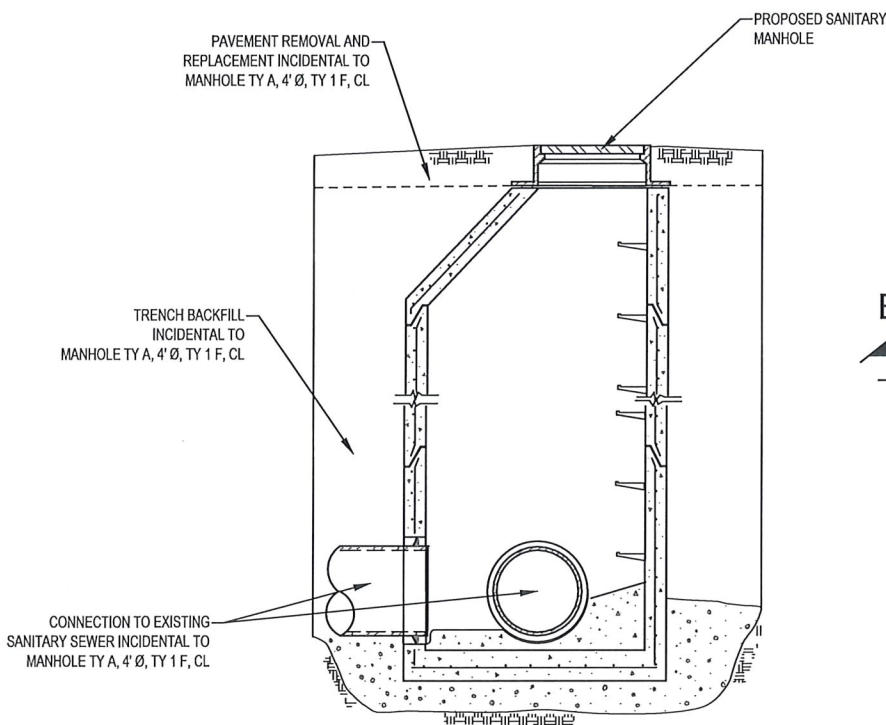
MANHOLE - TYPE "A"

FRAME AND LID CASTING SHALL BE SET FLUSH WITH THE FINAL GRADE OF THE SURROUNDING GROUND FOR TYPE, SEE SPECS

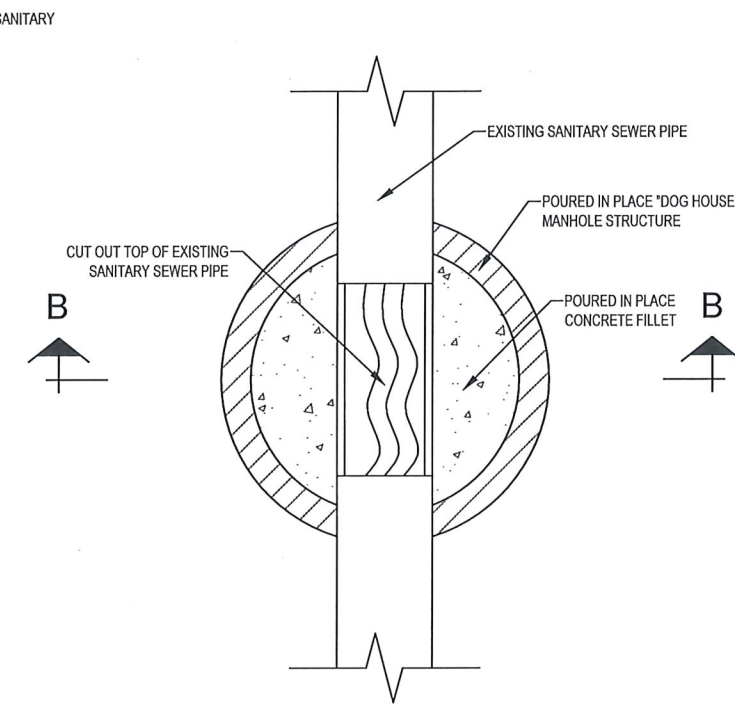
MANHOLE TYPE	INSIDE DIA.	MIN. WALL THICKNESS
A-4	4'-0"	5"
A-5	5'-0"	6"
A-6	6'-0"	7"



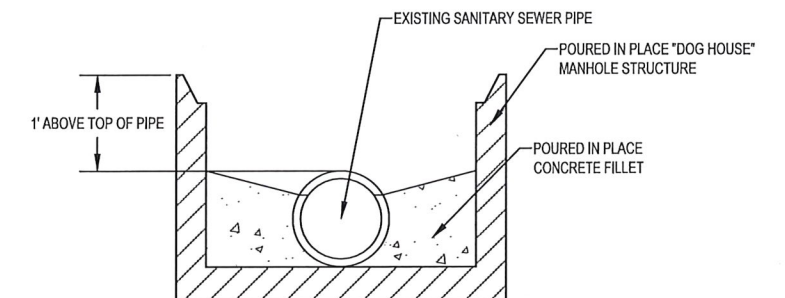
TYPICAL MANHOLE WALL JOINT



MANHOLE INSTALLED IN EXISTING PAVEMENT



TOP VIEW - POURED IN PLACE "DOG HOUSE" MANHOLE



SECTION B-B

POURED IN PLACE "DOG HOUSE" MANHOLE

SHEET No.

3

MILANO & GRUNLOH ENGINEERS, LLC  
114 W. WASHINGTON AVE. | PO BOX 897  
EFFINGHAM, IL 62401  
Phone: (217) 347-7262 | (800) 677-2714  
Email: mgeengineers@mgeengineers.com  
Web: www.mgeengineers.com  
Design Firm #184-003108

S:\2021\21006\DWG\21006-FE.DWG  
SAVE DATE: 7/2/2024 13:41

F.B. XXX

SANITARY SEWER STANDARDS  
SANITARY SEWER IMPROVEMENTS  
CITY OF EFFINGHAM  
EFFINGHAM COUNTY, IL

**SANITARY SEWER NOTES**

1. The proposed sanitary sewer shall be constructed in accordance with the plans and "The Standard Specifications for Water and Sewer Main Construction in Illinois", 8th Ed. 2020.

**2. LEAKAGE TESTING**

a. Manholes shall be leakage tight.

3. Where precast concrete manhole sections are used, a 6" adjusting ring shall be included in the make up of the manhole to allow an adjustment of 6" from proposed top of casting. Frame and lid shall be Neenah R-1772, with Self-Sealing Lid, or equal.

4. Installation and maintenance of erosion and sediment control practices shall be in accordance with the IEPA Standards and Specifications for Erosion and Soil Control, dated 1987.

**5. MANHOLES**

a. Manholes to conform to Standard Drawing No. 3 (Manhole Type A) of the Standard Specifications for Water and Sewer Main Construction in Illinois.

b. Any pipe required to make connection to existing sewer shall be included in cost of manhole.

c. All labor and materials necessary for connection to existing sewer shall be included in cost of manhole.

d. Manholes to be tested for watertightness in accordance with ASTM C969-94 "Standard Practice for Infiltration and Exfiltration Acceptance Testing of Installed Precast Concrete Pipe Sewer Lines", Vol. 04.05, Chemical Resistant Materials, Vitrified Clay, Concrete, Fiber-Cement Products; Mortars; Masonry (1996) (no later editions or amendments) or ASTM C1244-93 "Standard Test Method for Concrete Sewer Manholes by the Negative Pressure (Vacuum) Test", Vol. 04.05, Chemical Resistant Materials, Vitrified Clay, Concrete, Fiber-Cement Products; Mortars; Masonry (1996) (no later editions or amendments) prior to placing into service.

6. Sanitary Manholes under permanent type surfaces - Where the Sanitary Manhol is located in an area which now has a permanent or a proposed type street or sidewalk surface, the backfill of the area to the level of the bottom of the permanent type surface shall be made with approved trench backfill materials (sand, pea gravel, or clean rock). The remainder of the area shall be backfilled with Aggregate Base Course Type B. The Aggregate Base Course, Type B shall be a minimum of eight inches (8") depth on all driving surfaces. The Aggregate Base Course, Type B shall included in the cost of the project.

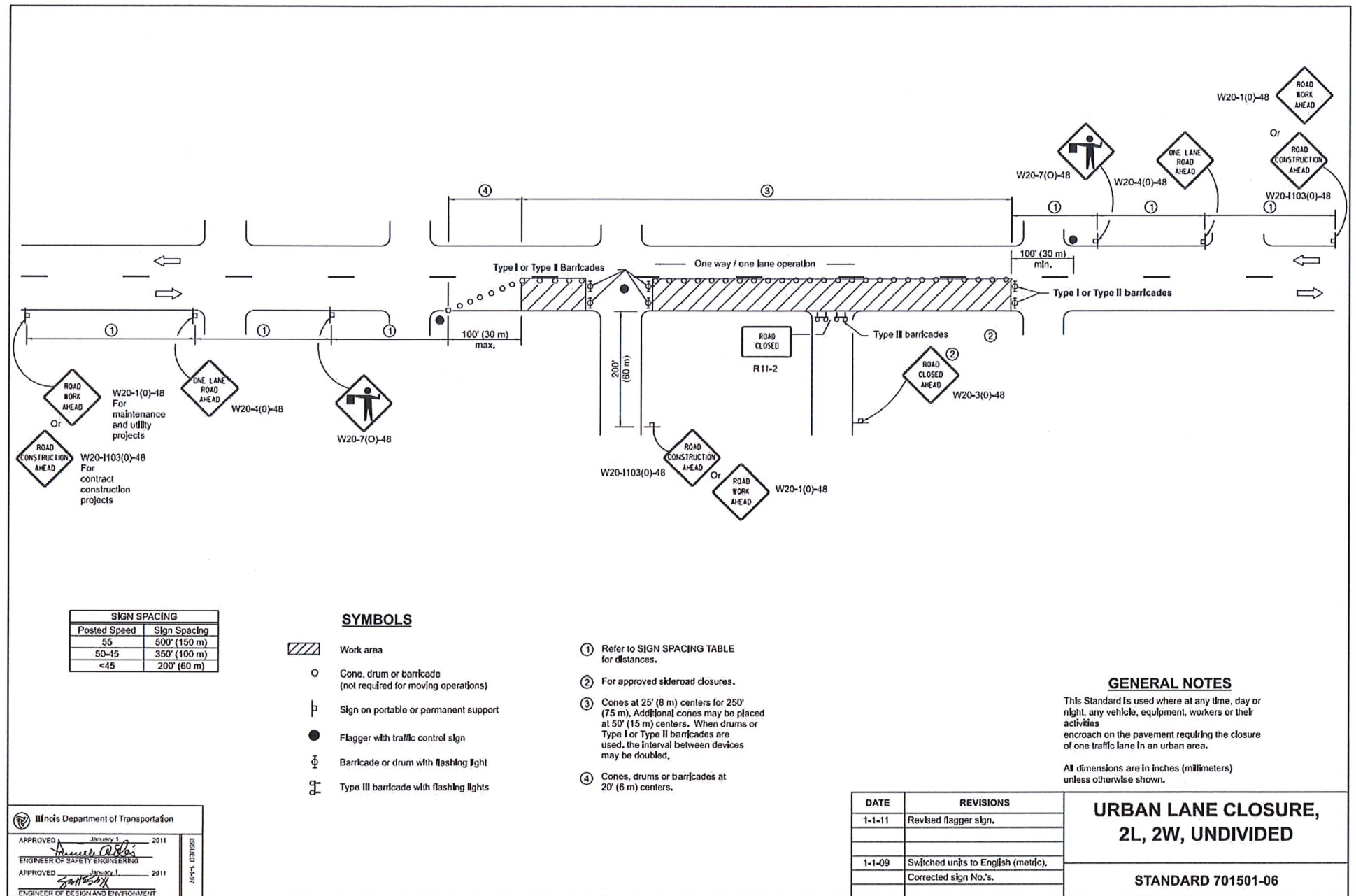
7. Sanitary Sewer Taps are shown for reference only. The contractor shall reinstate all taps encountered throughout the construction as directed by the Engineer. Contractor shall reinstate all active service laterals encountered.

8. Proposed Sanitary Sewer Inverts are shown at the center of structure.

9. Pipe lining lengths are measured from edge of structure to edge of structure.

10. It is the contractors responsibility to clean, inspect, and verify pipe sizes before ordering materials.

11. Contractor is required to televise all sewer lines to be lined pre and post construction.



**STANDARD LANE CLOSURE FOR CITY STREETS**

NOTE: FOR LANE CLOSURES ON STATE HIGHWAYS USE THE STANDARD PROVIDED BY IDOT LOCATED WITH IDOT PERMIT.

SHEET No.  
**4**

MILANO & GRUNLOH ENGINEERS, LLC  
114 W. WASHINGTON AVE. | PO BOX 897  
EFFINGHAM, IL 62401  
Phone: (217) 347-7282 | (630) 677-2714  
Email: mgeengineers@mgeengineers.com  
Web: www.mgeengineers.com  
Design Firm #184-03108

S:\2024\12\1006\DWG\21006-FE-DWG  
SAVE DATE: 7/2/2024 13:41

SANITARY SEWER NOTES  
SANITARY SEWER IMPROVEMENTS  
CITY OF EFFINGHAM  
EFFINGHAM COUNTY, IL

F.B. XXX

ITEM #	ITEM	UNIT	6	7	8	9	10	11	12	TOTAL
1	MANHOLE, TYPE A, 4' DIAMETER TYPE 1 FRAME, CLOSED LID (SANITARY)	EA	1	2					1	4
2	SANITARY SEWER MANHOLE REHABILITATION	VF	41.7	16.6	13.3	49.6	58.8	59.2	29.2	268
3	CLEAN INSPECT AND INSTALL CURED-IN-PLACE-PIPE (CIPP) - 8 INCH	LF				539				539
4	CLEAN INSPECT AND INSTALL CURED-IN-PLACE-PIPE (CIPP) - 10 INCH	LF							523	523
5	CLEAN INSPECT AND INSTALL CURED-IN-PLACE-PIPE (CIPP) - 12 INCH	LF		628	651					1279
6	CLEAN INSPECT AND INSTALL CURED-IN-PLACE-PIPE (CIPP) - 15 INCH	LF	315			100				415
7	CLEAN INSPECT AND INSTALL CURED-IN-PLACE-PIPE (CIPP) - 18 INCH	LF	318				959	651	334	2262
8	REINSTATE SERVICE LATERAL	EA	15	14	3	4	20	5	18	79
9	SEEDING & MULCHING	LS								1
10	TRAFFIC CONTROL AND PROTECTION (SPECIAL)	LS								1

SHEET No.  
**5**



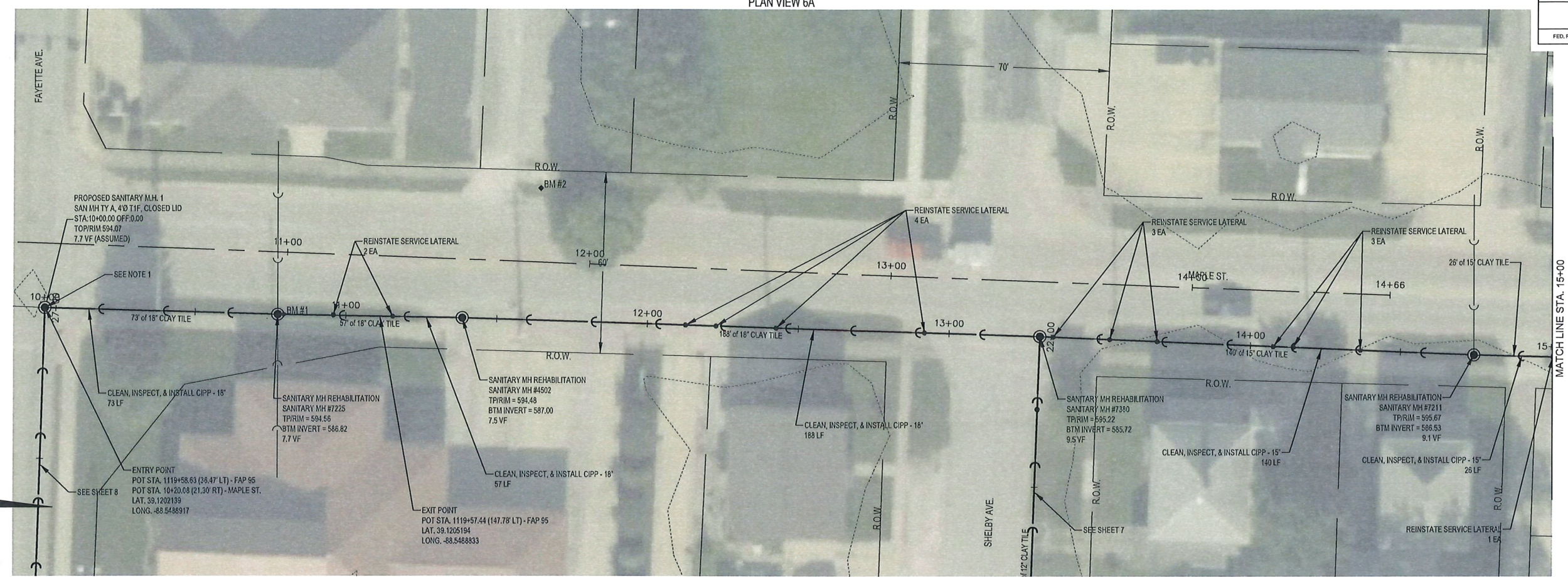
MILANO & GRUNLOH ENGINEERS, LLC  
 114 W. WASHINGTON AVE. | PO BOX 897  
 EFFINGHAM, IL 62401  
 Phone: (217) 347-7262 | (800) 677-2714  
 Email: mgengineers@mgengineers.com  
 Web: www.mgengineers.com  
 Design Firm #184-003108

S:\2024\121006\DWG\21006-FE.DWG  
 SAVE DATE: 7/2/2024 13:41 F.B. XXX

QUANTITIES SHEET  
 SANITARY SEWER IMPROVEMENTS  
 CITY OF EFFINGHAM  
 EFFINGHAM COUNTY, IL

PLAN VIEW 6A

ROUTE NO.	SECTION	COUNTY	TOTAL SHEETS	SHEET NO.
		EFFINGHAM	12	6
FED. ROAD DIST. NO. 7	ILLINOIS	FED. AID PROJECT-		



NOTE: CONTRACTOR TO FIELD VERIFY BETWEEN BENCHMARK ELEVATIONS

**BM #1 - ELEV. = 594.56**  
 NORTH RIM SANT. MANHOLE #7225, 237' SOUTH OF CENTERLINE SHELBY AVE & 20' EAST OF CENTERLINE MAPLE ST.

**BM #2 - ELEV. = 597.36**  
 SOUTH CAP BOLT ON F.H. WITH FILED "X" @ NORTH INTERSECTION OF MAPLE ST. & CALVARY BAPTIST CHURCH ENTRANCE

**MILANO & GRUNLOH ENGINEERS, LLC**  
 114 W. WASHINGTON AVE. | PO BOX 897  
 EFFINGHAM, IL 62401  
 Phone: (217) 347-7262 | (800) 677-2714  
 Email: [mgenr@engr.com](mailto:mgenr@engr.com)  
 Web: [www.mgenr.com](http://www.mgenr.com)  
 Design Firm #184-003108

File name: S:\2022\121006\DWG\PLAN SHEETS.DWG  
 Plot date: 6/28/2024 10:53 F.B.##

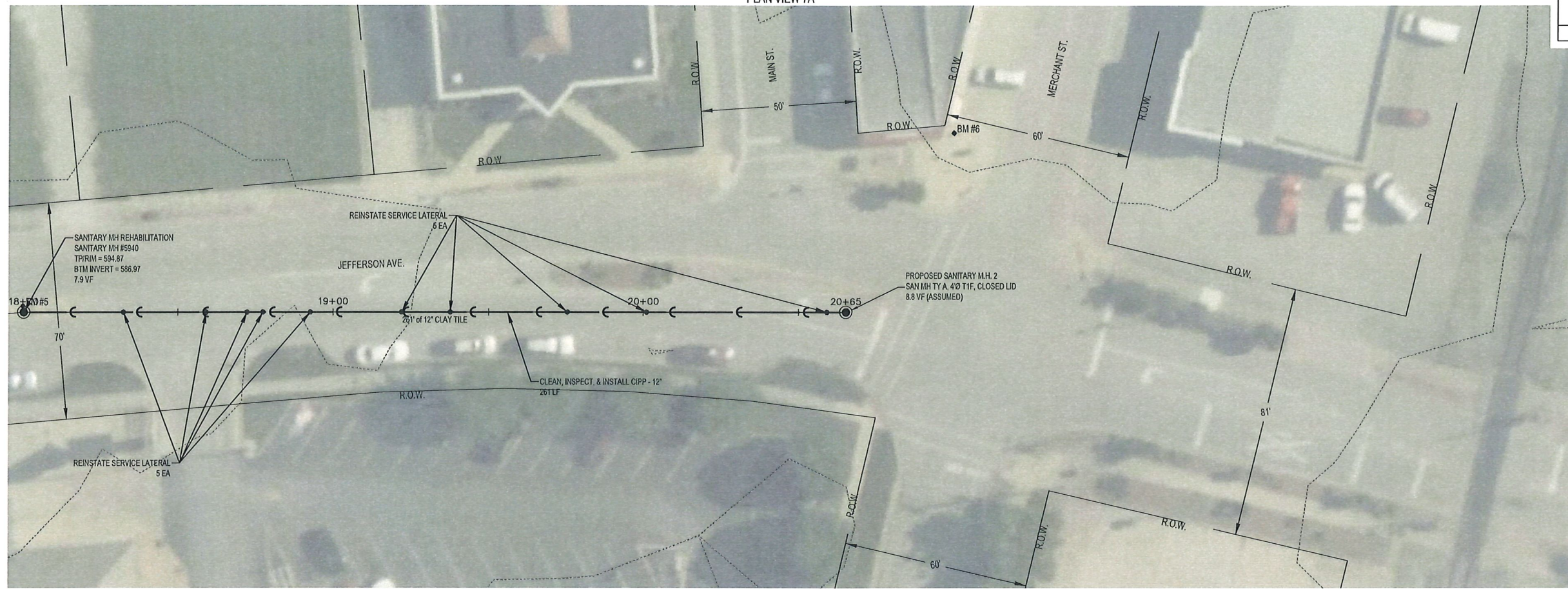
PLAN VIEW 6B



- NOTES:**
- 1) CONTRACTOR IS REQUIRED TO COORDINATE WORK FOR PROPOSED SANITARY M.H. 1 WITH IDOT. PROPOSED SANITARY M.H. 1 NEEDS TO BE COMPLETED BEFORE NEW PAVEMENT IS COMPLETE.
  - 2) CONTRACTOR IS REQUIRED TO TELEVISION THE SEWER LINES PRE & POST CONSTRUCTION.
  - 3) ITS THE CONTRACTORS RESPONSIBILITY TO CLEAN, INSPECT, & VERIFY PIPE SIZES BEFORE ORDERING MATERIALS.
  - 4) SERVICE LATERALS ARE SHOWN ON A +/- BASIS.
  - 5) CONTRACTOR IS TO REINSTATE ALL ACTIVE SERVICE LATERALS ENCOUNTERED.

ROUTE NO.	SECTION	COUNTY	TOTAL SHEETS	SHEET NO.
		EFFINGHAM	12	7
FED. ROAD DIST. NO. 7		ILLINOIS	FED. AID PROJECT-	

PLAN VIEW 7A



- NOTES:**
- 1) CONTRACTOR IS REQUIRED TO TELEVISION THE SEWER LINES PRE & POST CONSTRUCTION.
  - 2) IT'S THE CONTRACTORS RESPONSIBILITY TO CLEAN, INSPECT, & VERIFY PIPE SIZES BEFORE ORDERING MATERIALS.
  - 3) SERVICE LATERALS ARE SHOWN ON A +/- BASIS. CONTRACTOR IS TO REINSTATE ALL ACTIVE SERVICE LATERALS ENCOUNTERED.

NOTE: CONTRACTOR TO FIELD VERIFY BETWEEN BENCHMARK ELEVATIONS

**BM #5 - ELEV. = 594.87**  
 NORTH RIM SANITARY MANHOLE, 248' WEST OF CENTERLINE MAIN ST. & @ CENTERLINE JEFFERSON AVE.

**BM #6 - ELEV. = 598.03**  
 TOP CENTER CAP BOLT ON F.H. @ THE END OF OPEN ARROW @ THE NORTHWEST QUAD MERCHANT ST. & JEFFERSON AVE.

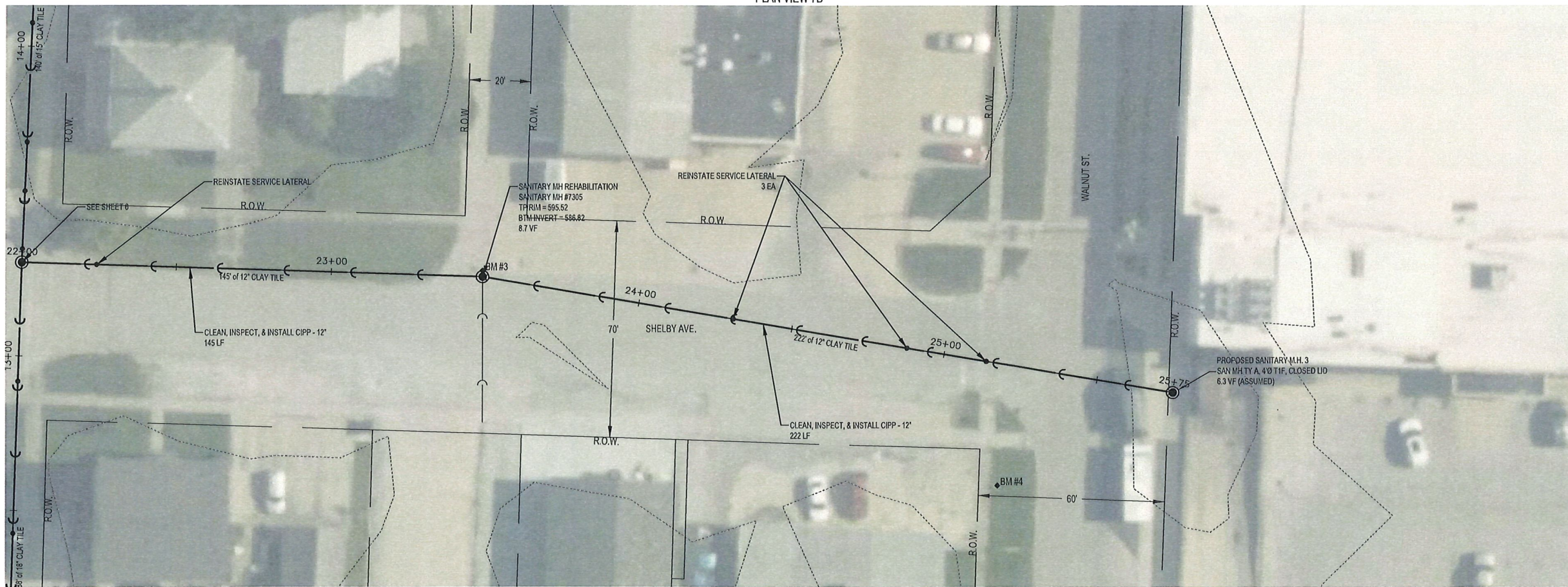
**MILANO & GRUNLOH ENGINEERS, LLC**  
 114 W. WASHINGTON AVE. | PO BOX 897  
 EFFINGHAM, IL 62401  
 Phone: (217) 347-7262 | (800) 677-2714  
 Email: [mgenr@mgengineers.com](mailto:mgenr@mgengineers.com)  
 Web: [www.mgengineers.com](http://www.mgengineers.com)  
 Design Firm #184-003108

File name: S:\2021\1006\DWG\PLAN SHEETS.DWG  
 Plot date: 6/29/2024 10:53 F.B.#F

SCALES:  
 1" = 20' HOR  
 1" = 5' VER



PLAN VIEW 7B



NOTE: CONTRACTOR TO FIELD VERIFY BETWEEN BENCHMARK ELEVATIONS

**BM #3 - ELEV. = 595.52**  
 NORTH RIM SANITARY MANHOLE, 167' EAST OF CENTERLINE MAPLE ST. & 14' NORTH OF SHELBY AVE.

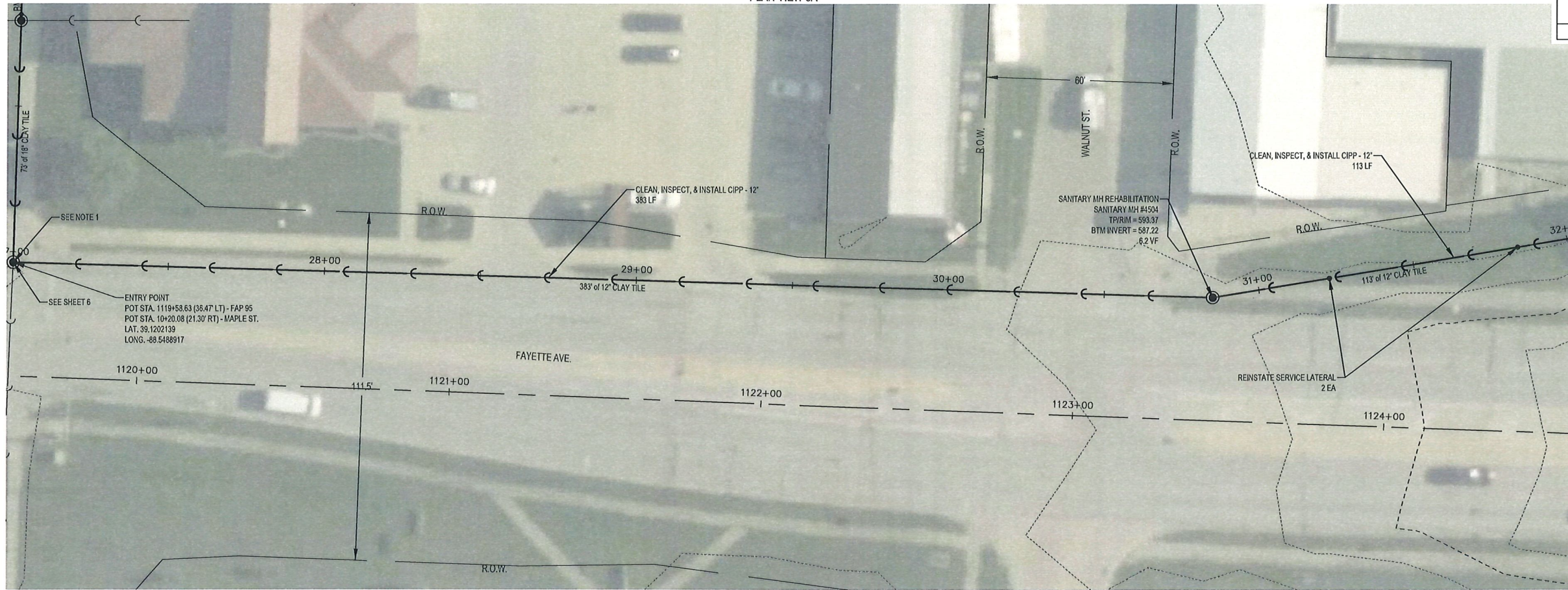
**BM #4 - ELEV. = 597.88**  
 TOP CENTER CAP BOLT ON F.H. @ SOUTHWEST CORNER OF SHELBY AVE. & WALNUT ST.

SCALES:  
 1" = 20' HOR  
 1" = 5' VER



ROUTE NO.	SECTION	COUNTY	TOTAL SHEETS	SHEET NO.
		EFFINGHAM	12	8
FED. ROAD DIST. NO. 7	ILLINOIS	FED. AID PROJECT-		

PLAN VIEW 8A



SCALES:  
1" = 20' HOR  
1" = 5' VER

- NOTES:
- 1) CONTRACTOR IS REQUIRED TO COORDINATE WORK FOR PROPOSED SANITARY M.H. 1 WITH IDOT. PROPOSED SANITARY M.H. 1 NEEDS TO BE COMPLETED BEFORE NEW PAVEMENT IS COMPLETE.
  - 2) CONTRACTOR IS REQUIRED TO TELEWISE THE SEWER LINES PRE & POST CONSTRUCTION.
  - 3) ITS THE CONTRACTORS RESPONSIBILITY TO CLEAN, INSPECT, & VERIFY PIPE SIZES BEFORE ORDERING MATERIALS.
  - 4) SERVICE LATERALS ARE SHOWN ON A +/- BASIS.
  - 5) CONTRACTOR IS TO REINSTATE ALL ACTIVE SERVICE LATERALS ENCOUNTERED.

NOTE: CONTRACTOR TO FIELD VERIFY BETWEEN BENCHMARK ELEVATIONS

<b>BM #1</b>
???
???
???
<b>BM #2</b>
???
???
???

**MILANO & GRUNLOH ENGINEERS, LLC**  
114 W. WASHINGTON AVE. | PO BOX 897  
EFFINGHAM, IL 62401  
Phone: (217) 347-7262 | (800) 677-2714  
Email: mgengineers@mgengineers.com  
Web: www.mgengineers.com  
Design Firm #184-003108

File name: S:\2021\121006\DWG\PLAN SHEETS.DWG  
Plot date: 6/26/2024 10:53 F.B. #11

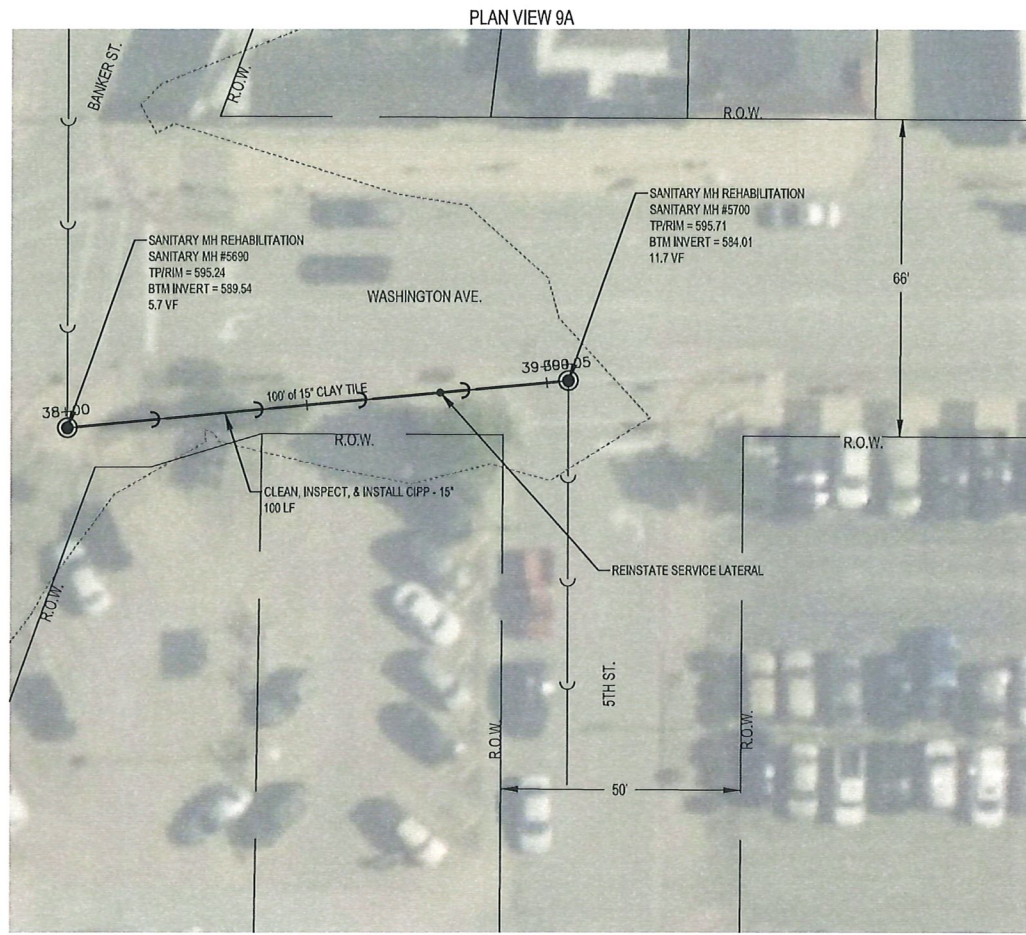
PLAN VIEW 8B



SCALES:  
1" = 20' HOR  
1" = 5' VER



ROUTE NO.	SECTION	COUNTY	TOTAL SHEETS	SHEET NO.
		EFFINGHAM	12	9
FED. ROAD DIST. NO. 7	ILLINOIS	FED. AID PROJECT.		



SCALES:  
1" = 20' HOR  
1" = 5' VER

- NOTES:
- 1) CONTRACTOR IS REQUIRED TO TELEVIEW THE SEWER LINES PRE & POST CONSTRUCTION. ITS THE CONTRACTORS RESPONSIBILITY TO CLEAN, INSPECT, & VERIFY PIPE SIZES BEFORE ORDERING MATERIALS.
  - 2) SERVICE LATERALS ARE SHOWN ON A +/- BASIS.
  - 3) CONTRACTOR IS TO REINSTATE ALL ACTIVE SERVICE LATERALS ENCOUNTERED.

NOTE: CONTRACTOR TO FIELD VERIFY BETWEEN BENCHMARK ELEVATIONS

BM #1

???

???

???

BM #2

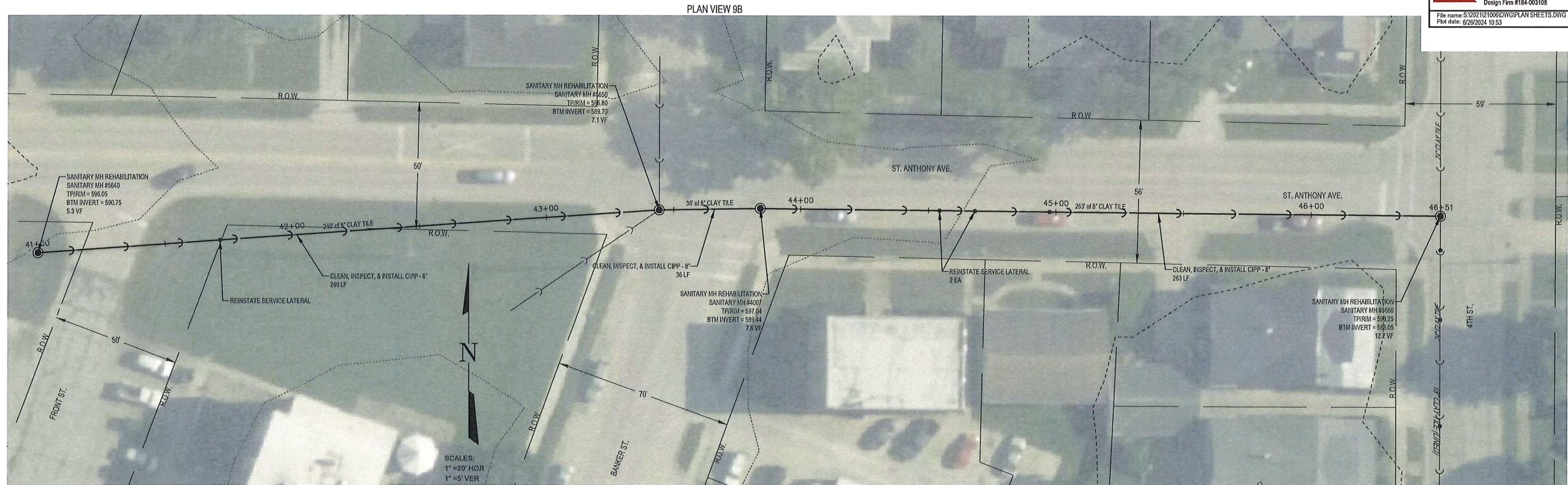
???

???

???

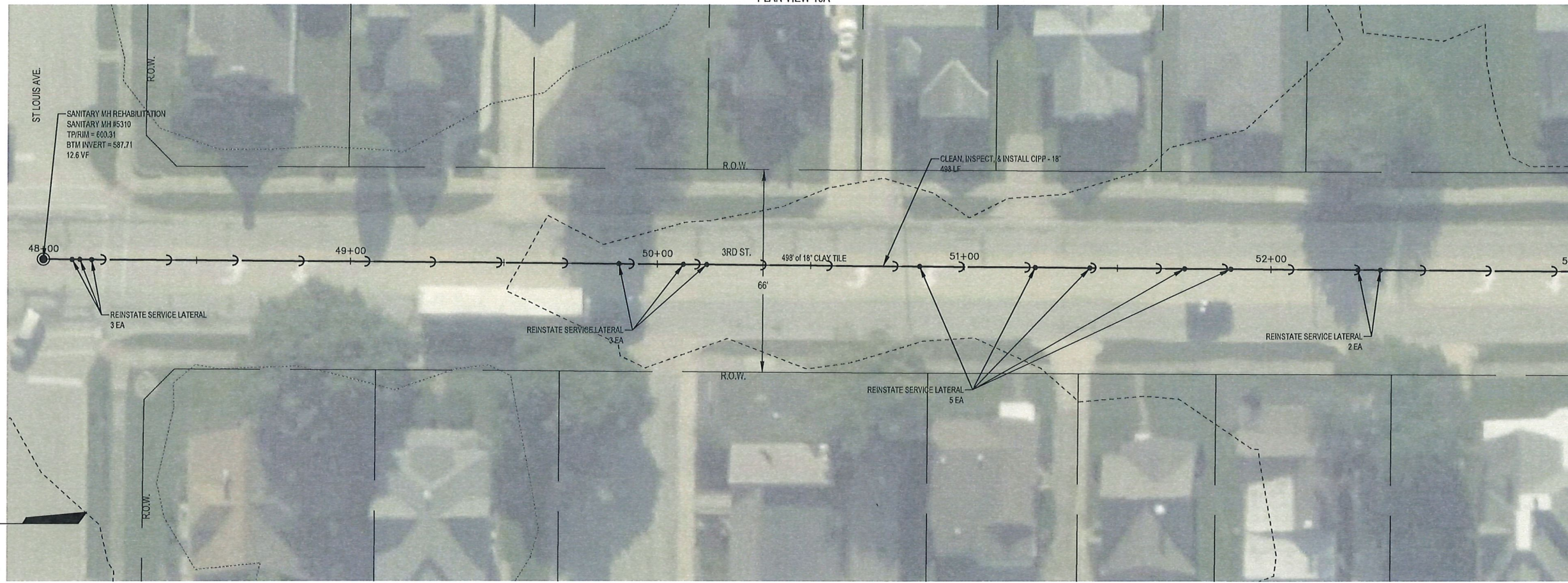
**MILANO & GRUNLOH ENGINEERS, LLC**  
 114 W. WASHINGTON AVE. | PO BOX 897  
 EFFINGHAM, IL 62401  
 Phone: (217) 347-7262 | (800) 677-2714  
 Email: [mgengineers@mgengineers.com](mailto:mgengineers@mgengineers.com)  
 Web: [www.mgengineers.com](http://www.mgengineers.com)  
 Design Firm #184-003108

File name: S:\2021\21006\DWG\PLAN SHEETS.DWG  
 Plot date: 8/28/2024 10:53 F.B. #48



SCALES:  
1" = 20' HOR  
1" = 5' VER

PLAN VIEW 10A



ROUTE NO.	SECTION	COUNTY	TOTAL SHEETS	SHEET NO.
		EFFINGHAM	12	10
FED. ROAD DIST. NO. 7		ILLINOIS	FED. AID PROJECT.	

- NOTES:
- 1) CONTRACTOR IS REQUIRED TO TELEVIEW THE SEWER LINES PRE & POST CONSTRUCTION. ITS THE CONTRACTORS RESPONSIBILITY TO CLEAN, INSPECT, & VERIFY PIPE SIZES BEFORE ORDERING MATERIALS.
  - 2) SERVICE LATERALS ARE SHOWN ON A +/- BASIS. CONTRACTOR IS TO REINSTATE ALL ACTIVE SERVICE LATERALS ENCOUNTERED.

NOTE: CONTRACTOR TO FIELD VERIFY BETWEEN BENCHMARK ELEVATIONS

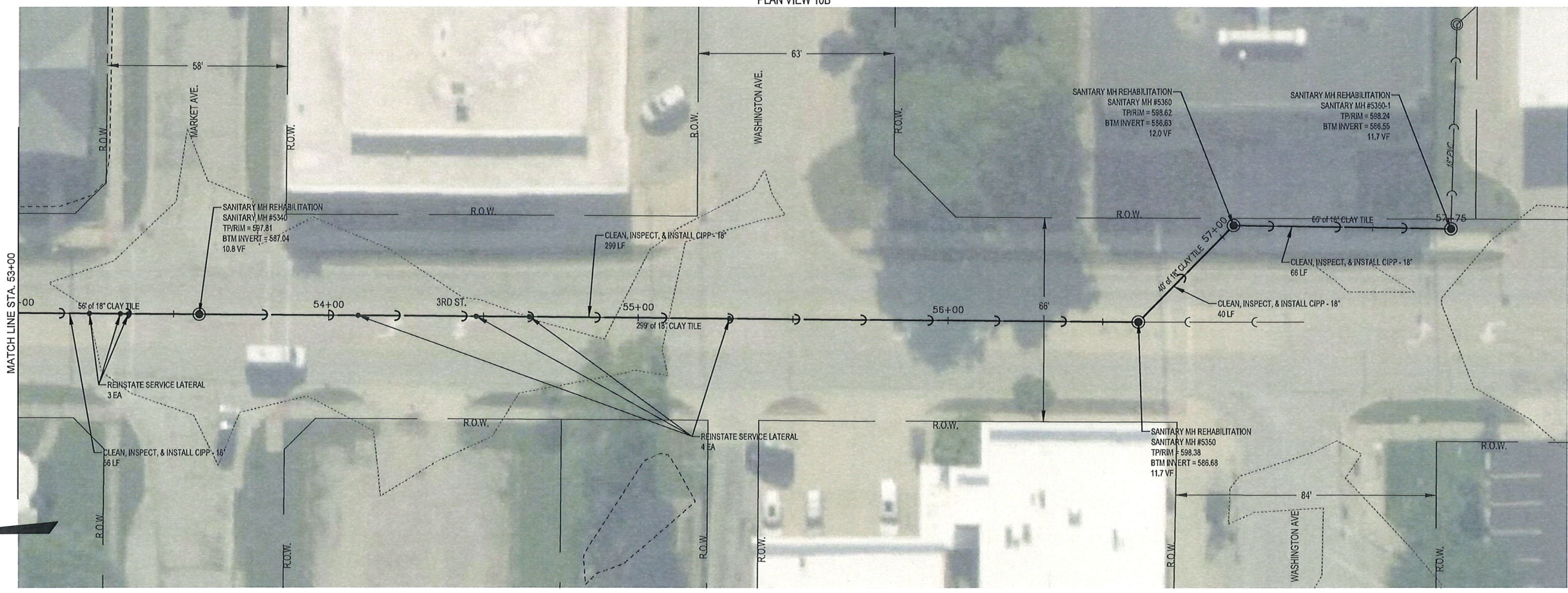
<b>BM #1</b>
???
???
???
<b>BM #2</b>
???
???
???

**MILANO & GRUNLOH ENGINEERS, LLC**  
 114 W. WASHINGTON AVE. | PO BOX 897  
 EFFINGHAM, IL 62401  
 Phone: (217) 347-7262 | (800) 677-2714  
 Email: mgengineers@mgenengineers.com  
 Web: www.mgenengineers.com  
 Design Firm #184-003108

File name: S:\2021\21006\DWG\PLAN SHEETS.DWG  
 Plot date: 6/29/2024 10:53 F.B. #1

SCALES:  
 1" = 20' HOR  
 1" = 5' VER

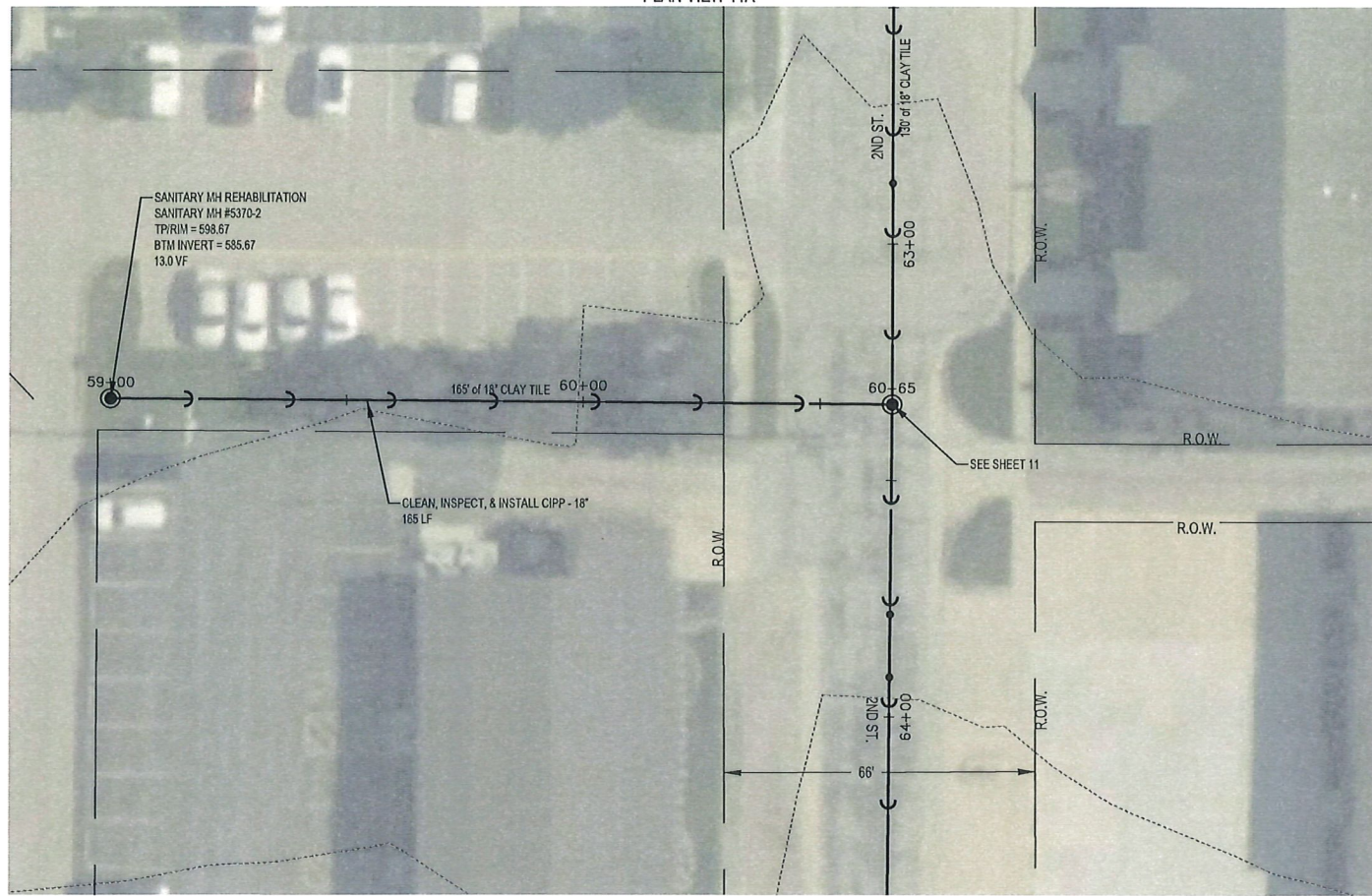
PLAN VIEW 10B



SCALES:  
 1" = 20' HOR  
 1" = 5' VER

ROUTE NO.	SECTION	COUNTY	TOTAL SHEETS	SHEET NO.
		EFFINGHAM	12	11
FED. ROAD DIST. NO. 7	ILLINOIS	FED. AID PROJECT-		

PLAN VIEW 11A



SCALES:  
1" = 20' HOR  
1" = 5' VER

NOTES:

- 1) CONTRACTOR IS REQUIRED TO TELEWISE THE SEWER LINES PRE & POST CONSTRUCTION.
- 2) ITS THE CONTRACTORS RESPONSIBILITY TO CLEAN, INSPECT, & VERIFY PIPE SIZES BEFORE ORDERING MATERIALS.
- 3) SERVICE LATERALS ARE SHOWN ON A +/- BASIS.
- 4) CONTRACTOR IS TO REINSTATE ALL ACTIVE SERVICE LATERALS ENCOUNTERED.

NOTE: CONTRACTOR TO FIELD VERIFY BETWEEN BENCHMARK ELEVATIONS

BM #1

???

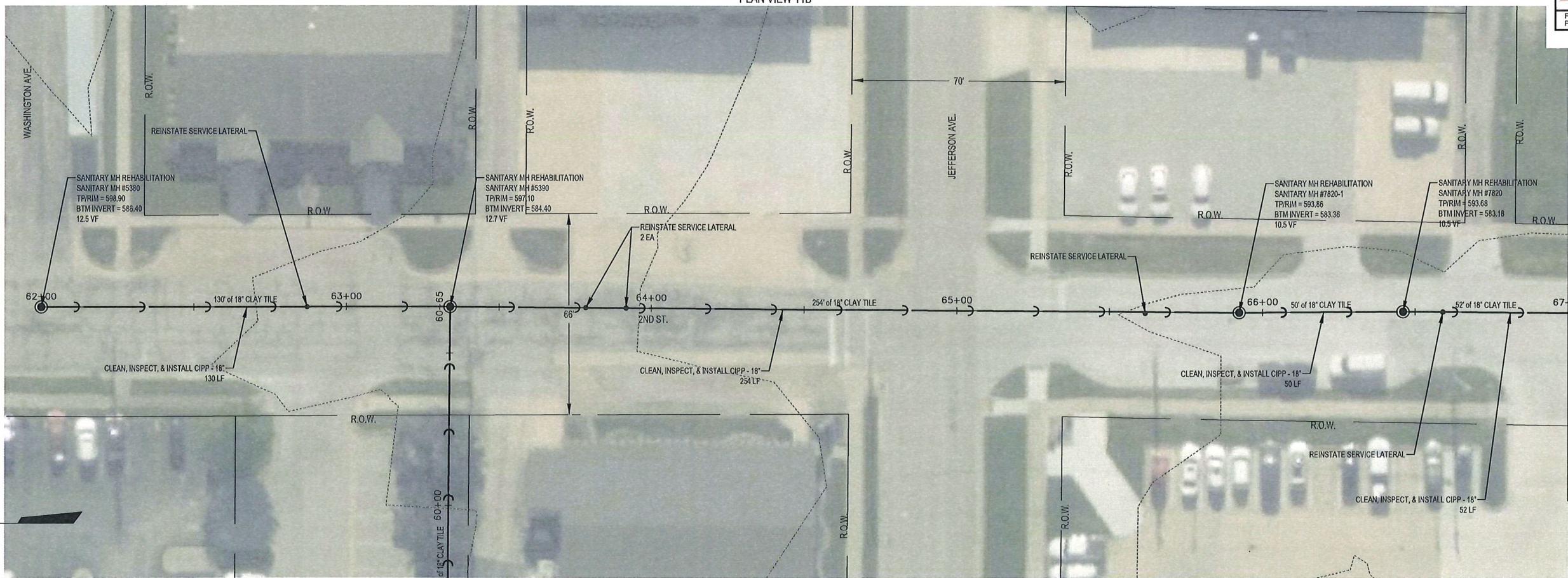
BM #2

???

MILANO & GRUNLOH ENGINEERS, LLC  
114 W. WASHINGTON AVE. | PO BOX 897  
EFFINGHAM, IL 62401  
Phone: (217) 347-7262 | (800) 677-2714  
Email: mgengineers@mgengineers.com  
Web: www.mgengineers.com  
Design Firm #184-003108

File name: S:\2021\1006\DWG\PLAN SHEETS.DWG  
Plot date: 6/29/2024 10:53 F.B. #

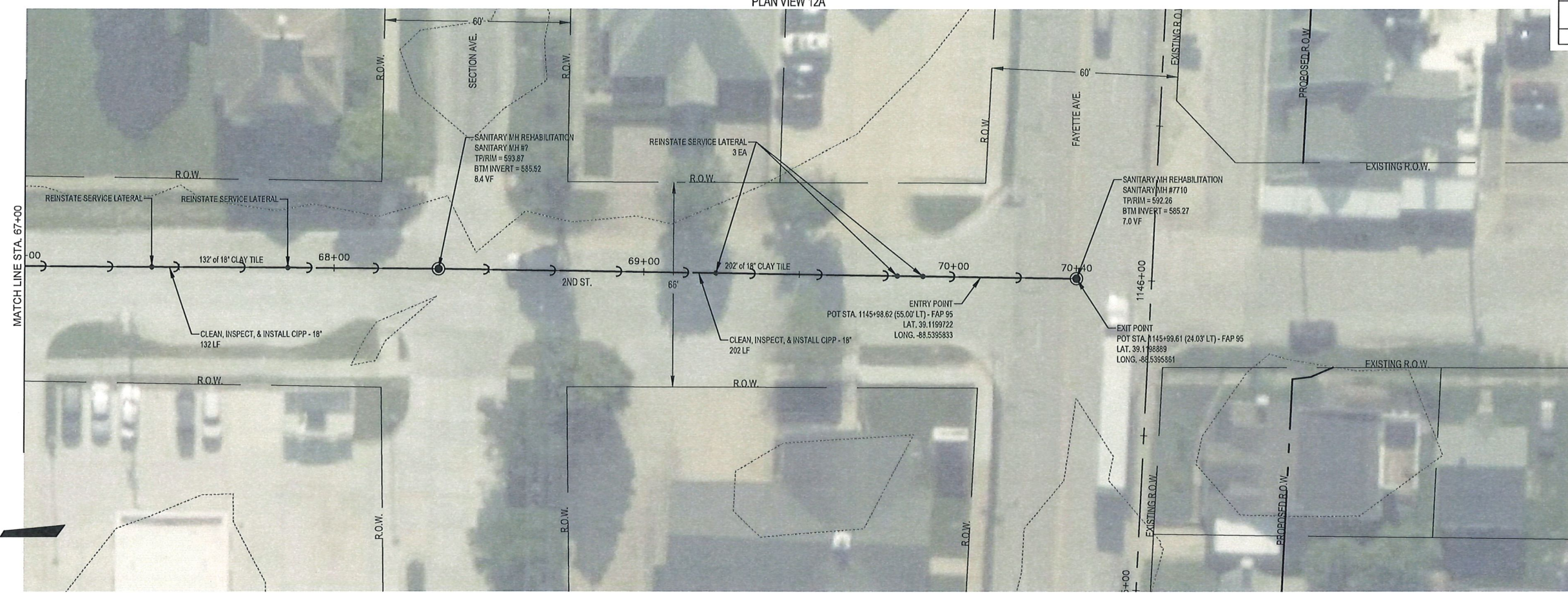
PLAN VIEW 11B



SCALES:  
1" = 20' HOR  
1" = 5' VER

ROUTE NO.	SECTION	COUNTY	TOTAL SHEETS	SHEET NO.
		EFFINGHAM	12	12
FED. ROAD DIST. NO. 7	ILLINOIS	FED. AID PROJECT-		

PLAN VIEW 12A



- NOTES:
- 1) CONTRACTOR IS REQUIRED TO TELEVIEW THE SEWER LINES PRE & POST CONSTRUCTION. ITS THE CONTRACTORS RESPONSIBILITY TO CLEAN, INSPECT, & VERIFY PIPE SIZES BEFORE ORDERING MATERIALS.
  - 2) SERVICE LATERALS ARE SHOWN ON A +/- BASIS.
  - 3) CONTRACTOR IS TO REINSTATE ALL ACTIVE SERVICE LATERALS ENCOUNTERED.

NOTE: CONTRACTOR TO FIELD VERIFY BETWEEN BENCHMARK ELEVATIONS

**BM #7 - ELEV. = 597.29**  
 NORTH RIM SANITARY MANHOLE, 18' NORTH OF CENTERLINE SECTION AVE. & 17' EAST OF WILLOW AVE.

**BM #8 - ELEV. = 598.53**  
 NORTH RIM STORM MANHOLE IN NORTHEAST MEDIAN OF JEFFERSON ST. & WILLOW AVE.

**MILANO & GRUNLOH ENGINEERS, LLC**  
 114 W. WASHINGTON AVE. | PO BOX 897  
 EFFINGHAM, IL 62401  
 Phone: (217) 347-7262 | (800) 677-2714  
 Email: [mgengineers@mgengineers.com](mailto:mgengineers@mgengineers.com)  
 Web: [www.mgengineers.com](http://www.mgengineers.com)  
 Design Firm #184-003108

File name: S:\2021\2106\DWG\PLAN SHEETS.DWG  
 Plot date: 6/29/2024 10:53 F.B.##



PLAN VIEW 12B

