

**PROJECT DATA**

Building Area Summary	Unit Count			
	2 Bedroom	1 Bedroom	Studio	Unit Count
Floor L (+104')	1	2	1	4
Floor Main (+114')		14	2	16
Floor 2 (+124')		18	1	19
Floor 3 (+134')		13	2	15
<b>TOTAL</b>	<b>1</b>	<b>47</b>	<b>6</b>	<b>54</b>

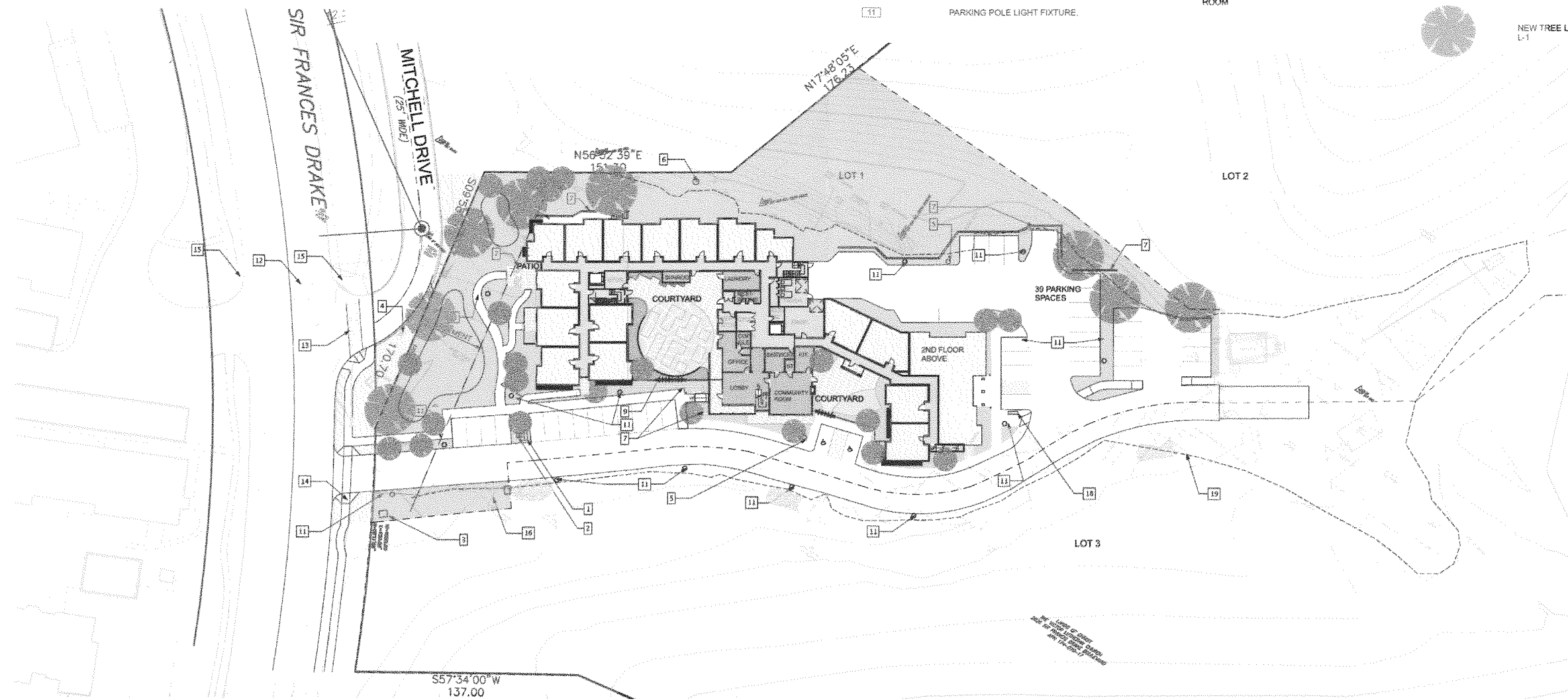
Parking Summary	Spaces
Resident Parking	40
Staff Parking	3
<b>TOTAL</b>	<b>43</b>
Parking Ratio	0.74

**SHEET NOTES**

- 1 FIRE CONNECTION
- 2 BACK FLOW PREVENTERS
- 3 PAD MOUNTED TRANSFORMER
- 4 EXISTING HYDRANT
- 5 NEW HYDRANT
- 6 ELECTRIC UTILITY POLE
- 7 CONCRETE RETAINING WALL
- 8 LOW STEEL FENCE WITH WOOD RAIL
- 9 RAISED ACCESSIBLE PLANTERS
- 10 METAL DEER FENCE
- 11 PARKING POLE LIGHT FIXTURE.
- 12 (E) CROSSWALK
- 13 NEW CROSSWALK
- 14 EXTEND SIDEWALK, CURB AND GUTTER TO PROPERTY LINE AS SHOWN
- 15 POTENTIAL PEDESTRIAN CROSSING ENHANCEMENT- SIGNAL WITH FLASHING LIGHT BOTH SIDES OF SIR FRANCIS DRAKE
- 16 STORM DRAIN
- 17 ROUGHENED CHANNEL, SEE CIVIL DRAWINGS.
- 18 DESIGNATED SMOKING AREA WITH BENCH
- 19 DASHED LINE REPRESENT PREVIOUSLY DEVELOPED AREA
- 20 DECOMPOSED GRANITE PATH TO MECHANICAL ROOM

**LEGEND**

- PROPERTY LINE
- (N) METAL FENCE.
- BOUNDARY OF PREVIOUSLY DEVELOPED AREA
- ♿ ACCESSIBLE PARKING SPACE
- RESIDENTIAL
- CIRCULATION/MAINTENANCE
- COMMON AREAS
- NEW TREE LOCATION, SEE SHEET L-1



1 SITE PLAN  
A-1.0 SCALE: 1" = 30'

**Fairfax Senior Housing | PROPOSED SITE PLAN AND PROJECT DATA**

Fairfax, California | 01/12/2017 | Resources for Community Development | # 1429

