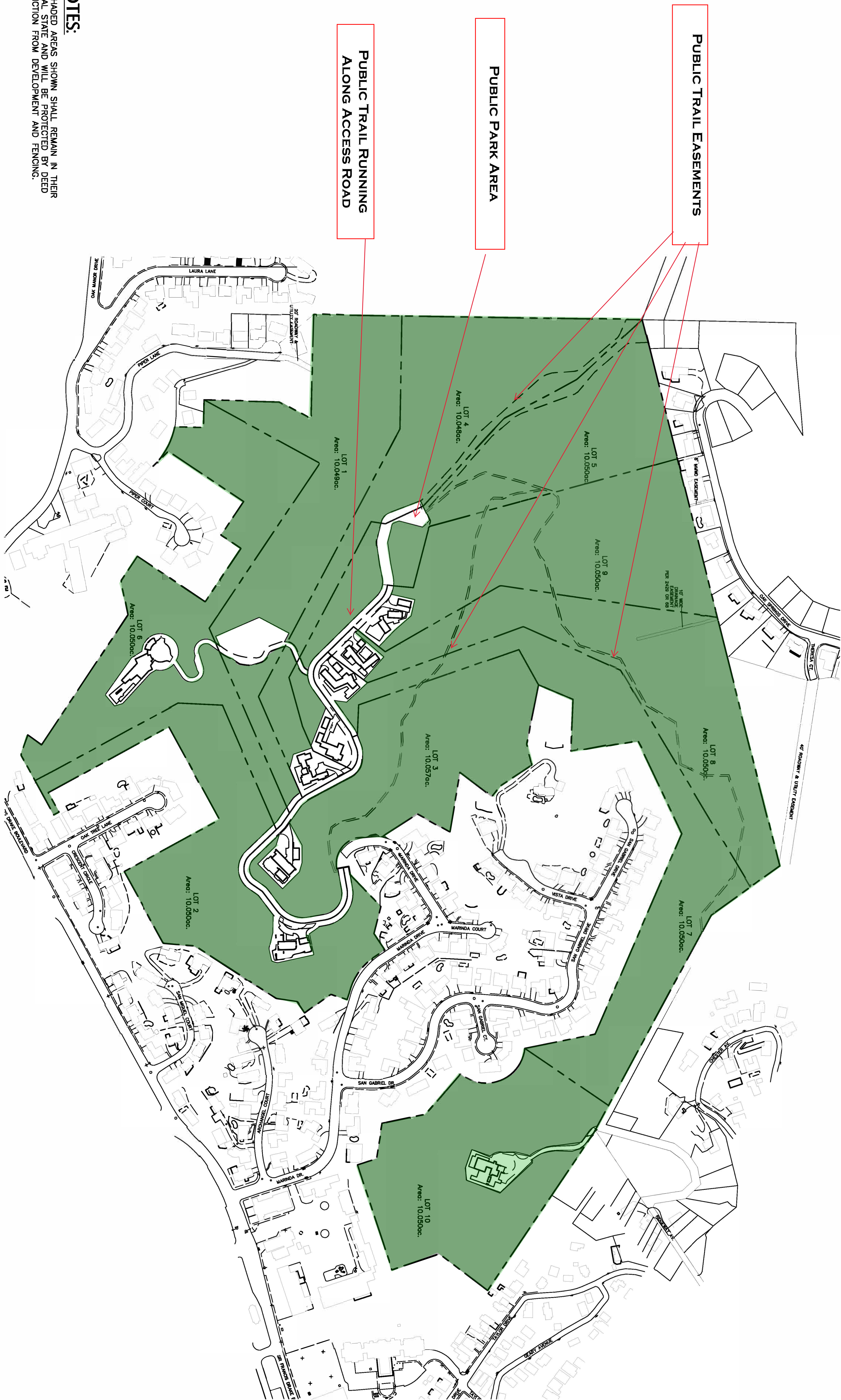


NOTES:
 ALL SHADED AREAS SHOWN SHALL REMAIN IN THEIR NATURAL STATE AND WILL BE PROTECTED BY DEED RESTRICTION FROM DEVELOPMENT AND FENCING.

LEGEND

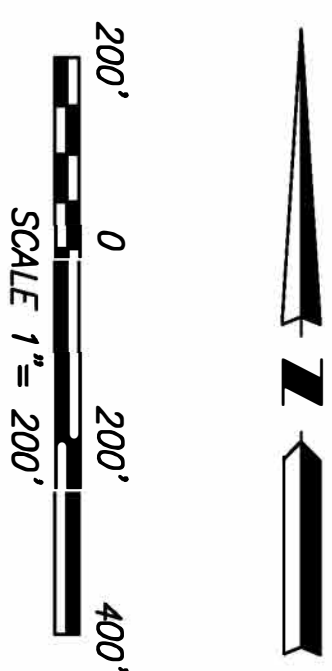
 BUILDING ENVELOPE & ROADWAY ACCESS AREAS
 NATURAL STATE AREAS



GREENBELT PRESERVATION MAP

PUBLIC TRAIL/PARK EASEMENTS

95.45% OF TOTAL ACREAGE PRESERVED



SHEET GREEN BELT TRAIL MAP 1 -16	Scale: 1"=200'	BUILDING ENVELOPE WITH ACCESS ROADWAY MAPS VESTING TENATIVE MAP - MARINDA HEIGHTS SUBDIVISION TOWN OF FAIRFAX APN: 001-150-12, 001-171-51, 001-251-31, 001-160-09 CALIFORNIA	OBERKAMPER & ASSOCIATES CIVIL ENGINEERS INC. 7200 REDWOOD BLVD SUITE 308 NOVATO, CA 94945 PHONE (415) 897-2800 WWW.OBERKAMPER.COM	1 12/27/17 1ST SUBMITTAL TO TOWN OF FAIRFAX
	Drawn by: HJS			2 07/12/18 2ND SUBMITTAL TO TOWN OF FAIRFAX
	Designed by: HJS/PAB			3
	Checked by: LEO			4
Date: DECEMBER 2017				