



TOWN OF FAIRFAX

STAFF REPORT

April 1, 2015

TO: Mayor and Town Council

FROM: Garrett Toy, Town Manager *GT*

SUBJECT: Discuss/Consider the approval/disapproval of the proposed additional assessment for the Marin/Sonoma Mosquito, Vector and Disease Control Assessment No.3.

RECOMMENDATION

Direct Town Manager to complete and submit the ballots prior to the deadline.

DISCUSSION

The Marin/Sonoma Mosquito, Vector and Disease Control District has issued an Assessment Ballot to all property owners, including the Town. The proposed assessment would apply beginning with fiscal year 2015-2016.

The total proposed amount of increase for all Town-owned properties is approximately \$74.60 in the first year. If passed, in future years the amount can be adjusted for inflation according to the Consumer Price Index, up to 5%.

For details relating to the proposed assessment and services of the District, please refer to the attached Ballot Information Guide, which was mailed together with the ballots. Ballots must be received on or before April 15, 2015 to be counted.

FISCAL IMPACT

Approximately \$75 in Fiscal Year 2015-16, with nominal annual increases (no more than 5%) in following years.

ATTACHMENTS

Marin/Sonoma Mosquito, Vector and Disease Control District Ballot Information Guide



Official Notice and Ballot Information Guide

Mosquito, Vector and Disease Control Assessment

(Assessment No. 3)

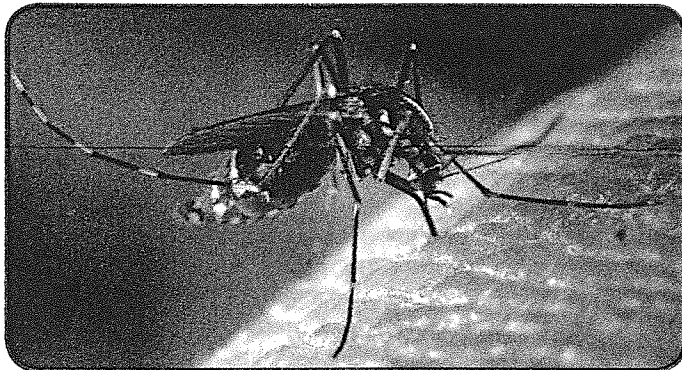
by the Marin/Sonoma Mosquito and Vector Control District

Public Hearing:
April 15, 2015
at 7:00 p.m.
595 Helman Ln.
Cotati, CA

Why Did You Receive This Assessment Ballot?

The Marin/Sonoma Mosquito and Vector Control District is an independently-funded public agency, separate from any City or the Counties, that was established in 1915. The purpose of the District is to prevent the diseases transmitted by mosquitoes and other vectors, and to reduce their populations through monitoring, treatment, and preventative measures throughout the District. (A "vector" is any organism or animal capable of transmitting disease to humans and to domestic animals.)

The Marin/Sonoma Mosquito and Vector Control District serves approximately 736,000 residents in a nearly 2,300 square mile service area that covers both Marin and Sonoma Counties.



The District would protect residents from new emerging vectors, such as the Asian Tiger Mosquito, which transmit diseases to people.

Public Hearing

A public hearing will be held on Wednesday, April 15, 2015 at 7:00 p.m. before the Marin/Sonoma Mosquito and Vector Control District Board of Trustees at the District's offices, located at 595 Helman Lane, Cotati, California. You are invited to attend the public hearing. Tabulation of the returned ballots will commence after the close of the public input portion of the hearing, and the results of the tabulation will be announced at the continuation of the public hearing scheduled for 7:00 p.m. on May 13, 2015 at the District's offices, located at the same address above.

Summary of Proposed Services for Your Area:

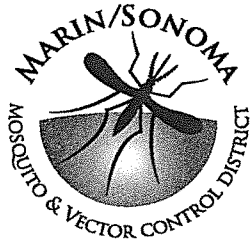
- Continue and improve the control of mosquitoes and the diseases they carry.
- Provide year round testing and early detection of existing and emerging diseases, such as West Nile virus, Chikungunya, Dengue and Yellow Fevers, canine Heartworm, Lyme disease, Encephalitis, Hantavirus, or plague.
- Comprehensive response to any disease outbreaks from mosquitoes, rodents, ticks and fleas.
- Provide mosquito larvae-eating fish to property owners for backyard ponds and water features.
- Control mosquitoes and other disease carrying vectors using environmentally compatible approaches that focus on eliminating the breeding sources and locations.

For more information please visit our website at www.ms mosquito.com

The assessment ballot included with this notice allows owners of property in Marin and Sonoma Counties to decide on a proposed benefit assessment that would provide supplemental funding for improved, comprehensive, year-round mosquito, vector and disease control services. Increased threats from new species of mosquitoes like the Asian Tiger Mosquito, and emerging diseases such as Dengue and Yellow Fevers, and Chikungunya, require increasing levels of protection from the District. If the assessment is approved by the property owners, the District would continue and enhance control of mosquitoes and consult on other vectors, providing vector identification, and rapid, cost-effective testing for existing and emerging vectors and diseases in Marin and Sonoma Counties. However, if this proposed assessment is not approved, the District may have to reduce both current and future service levels.

Please Complete Your Ballot and Mail It Back Promptly

All Ballots Must Be Received on or Before April 15, 2015 to Be Counted



Official Notice and B Mosquito, Vector and Disease Con by the Marin/Sonoma Mosqu

Mosquito Facts

Disease Transmission: Mosquitoes infected with a disease can spread that disease to humans or animals when they bite and suck blood.

Why Do Mosquito Bites Itch? When a mosquito bites, it injects chemicals to prevent the blood from clotting. These chemicals cause irritation that makes you itch.

Do All Mosquitoes Suck Blood? Only the female mosquitoes feed on blood; male mosquitoes feed on plant nectar and juices.

Mosquito Sources: Mosquitoes lay eggs in stagnant, standing water. These eggs turn into larvae that live in the water until they hatch into adult mosquitoes. By eliminating standing water, we can eliminate the sources of mosquitoes.

Mosquito Breeding Potential: A small household bucket filled with stagnant water can produce thousands of mosquitoes per day and affect residents in the surrounding area.

Lifespan: About 14 days for females; 7 days for males.

Eggs: One female can lay over 600 eggs in her lifetime.

Wing Speed: Moves more than 1,000 times a second; that is the buzzing sound we hear.

How Are Diseases Prevented by Mosquito Control Services?

First, by reducing mosquito populations, the transmission of the diseases they can carry is minimized. Second, through the continuous and regular testing of mosquitoes for the presence of disease, emerging disease threats can be discovered and the proper steps can be taken to protect public health. This assessment would ensure that the District has adequate funding to provide these services and to respond to requests by homeowners within the District that are experiencing mosquito problems.

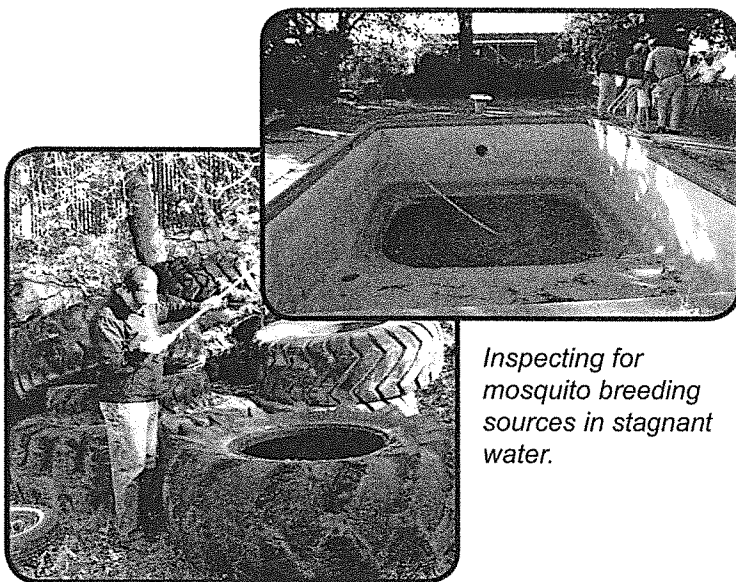
Treating for mosquito breeding in a storm drain.



Mosquito Surveillance and Disease Testing

The District currently has 19 mosquito/vector control technicians/specialists with experience ranging from 3 to 20 years of service. Each technician is certified and maintains certification through the California Department of Public Health. The District provides mosquito control, surveillance and testing through a multi-faceted Integrated Vector Management program including:

- Sampling of adult and larval mosquito populations within the District's boundaries. Specimens are counted and identified, and adult samples are tested for disease as appropriate.
- Surveillance and inspection of water sources for mosquito eggs, larval, and pupal populations.
- Maintaining surveillance programs for West Nile virus and other mosquito-borne pathogens, ticks, Lyme disease and other tick-borne diseases.
- Working closely with municipalities, local, state and federal agencies, and local public health and environmental health departments.



Inspecting for mosquito breeding sources in stagnant water.

Public Hearing: April 15, 2015, 7:00 p.m., 595 Helman Ln., Cotati

Ballot Information Guide of Assessment (Assessment No. 3) to Mosquito and Vector Control District

Public Hearing:
April 15, 2015, at 7:00 p.m.
595 Helman Ln.
Cotati, CA

How Much Is the Proposed Assessment?

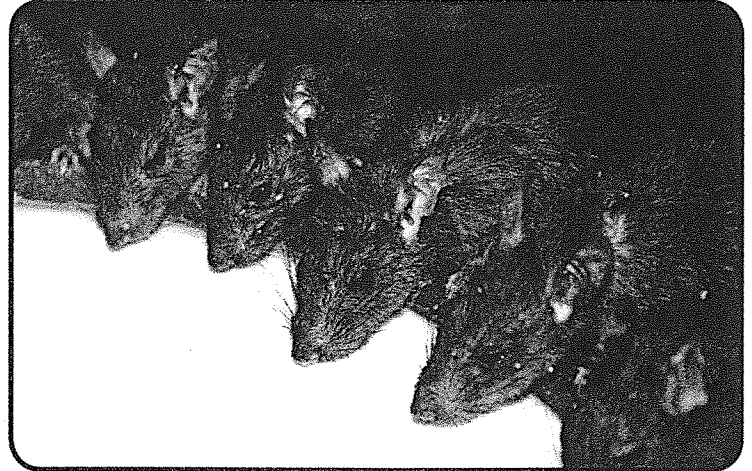
The proposed assessment for your property for fiscal year 2015-16 is printed on the Official Assessment Ballot included with this notice and information item. For single family homes on one acre or less, the proposed annual assessment is \$12.86, while other residential property types are assessed according to the number of dwelling units and parcel size. Commercial, industrial and agricultural properties are assessed according to their parcel size and property type. The total amount that would be raised by the proposed assessments for fiscal year 2015-16 is approximately \$3,592,000.

How Was the Assessment Determined?

The total cost of the improved mosquito, vector and disease control services that will be funded by the assessments is allocated to each property based on the estimated special benefit received. The method of benefit determination is based on the type of property, the location of property, the number of dwelling units, and its size. The types of special benefit include: reduced mosquito and vector populations on property and enhanced desirability, utility, usability and functionality of property; increased safety of property; reductions in the risk of new diseases and infections; protection of economic activity; protection of agriculture, tourism, and business industries; reduced risk of nuisance and liability; and improved marketability of property. An Engineer's Report describing the proposed services, method of assessment, budget, and proposed assessments for each parcel is available for review at the Marin/Sonoma Mosquito and Vector Control District, located at 595 Helman Lane, Cotati, California.

What This Measure Will Provide

This proposed Mosquito, Vector and Disease Control Assessment is in addition to other assessments you may currently pay. This mailed assessment ballot allows property owners in Marin and Sonoma Counties to decide if comprehensive, mosquito, rat, and other vector surveillance and control, and vector-borne disease testing and prevention services, should continue to be provided by the District.



The District provides free rodent inspections to residents of Marin and Sonoma counties.

Will This Assessment Increase in the Future?

If approved, the assessment may be continued in future years. In future years after 2015-16, the assessment can only be adjusted for inflation by an amount equal to the change in the Consumer Price Index (U.S. Dept. of Labor - All Urban Consumers - San Francisco-Oakland-San Jose area), not to exceed 5% per year. Any change in the CPI in excess of 5% shall be cumulatively reserved as the "Unused CPI" and shall be used to increase the maximum authorized assessment rate in years in which the CPI is less than 5%. This annual adjustment, which must be reviewed and approved annually at a public meeting, will help keep the assessment revenues in line with the cost of providing mosquito, vector and disease control services in the future.



The Mosquito District provides educational outreach to raise awareness of mosquitoes and mosquito-borne diseases.

All Ballots Must Be Received on or Before April 15, 2015 to Be Counted

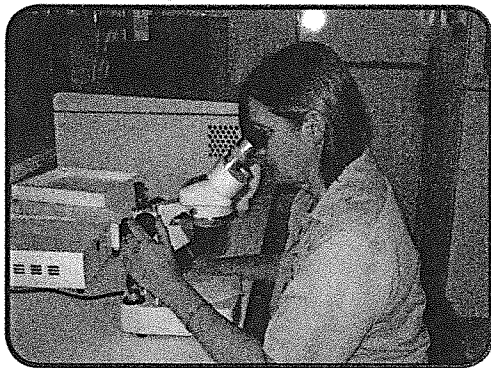
Please Complete Your Ballot and Mail It Back Promptly

What Are the Public Accountability Safeguards?

This assessment ballot measure will include several layers of fiscal safeguards to ensure that all funds are expended appropriately. First, these funds can only be spent on mosquito, vector and disease control services within the District. Second, the funds will be overseen by the District's Board of Trustees with annual audits to ensure all funds are expended appropriately. And third, the budget for the services proposed each year will be presented annually to the public at a noticed public hearing as required by law.

Method of Voting

To complete the enclosed official assessment ballot, mark the oval next to either Yes or No, sign the ballot, place it in the provided postage-paid return envelope, and mail or hand deliver it. Only official assessment ballots which are signed and marked with the property owner's support or opposition, and are received before the end of the public input portion of the public hearing on Wednesday, April 15, 2015, will be counted. See the enclosed assessment ballot for additional instructions. Assessment ballots are weighted by the proposed amount of assessment and will be tabulated accordingly. The assessment shall not be imposed if, upon the conclusion of the public hearing, assessment ballots submitted in opposition to the assessment exceed the assessment ballots submitted in favor of the assessment, with ballots weighted according to the proportional financial obligation of the affected property.



The District traps mosquitoes and other vectors, and tests them for West Nile virus and other diseases.

Additional Information

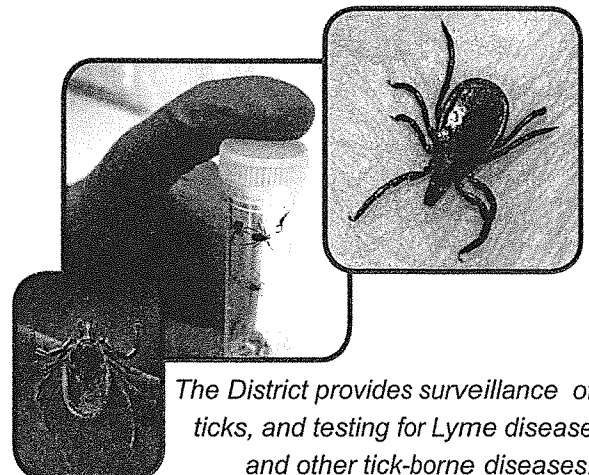
If you have questions about the District, the proposed services and assessment, the assessment ballot proceeding, lose your assessment ballot, require a replacement assessment ballot, need a proportional assessment ballot, or want to change your vote, call the District at (707) 285-2200. For additional information about the District visit our website at www.msosquito.com.

The District responds to service requests concerning mosquitoes, yellowjackets, and rodents.



Will This Affect the Environment?

The District's Integrated Pest Management approach to mosquito abatement and disease control services involves the use of environmentally sound methods to eliminate sources of mosquitoes, and other disease carrying insects, with biological control methods whenever possible. This approach starts with identifying and eliminating breeding grounds in standing or stagnant water such as those found in abandoned fountains, old tires, and leaks from faulty plumbing or drainage. For sources in ponds and neglected swimming pools, the District uses mosquitofish and other natural resources to target and eliminate mosquito larvae.



The District provides surveillance of ticks, and testing for Lyme disease and other tick-borne diseases.

All Ballots Must Be Received on or Before April 15, 2015 to Be Counted