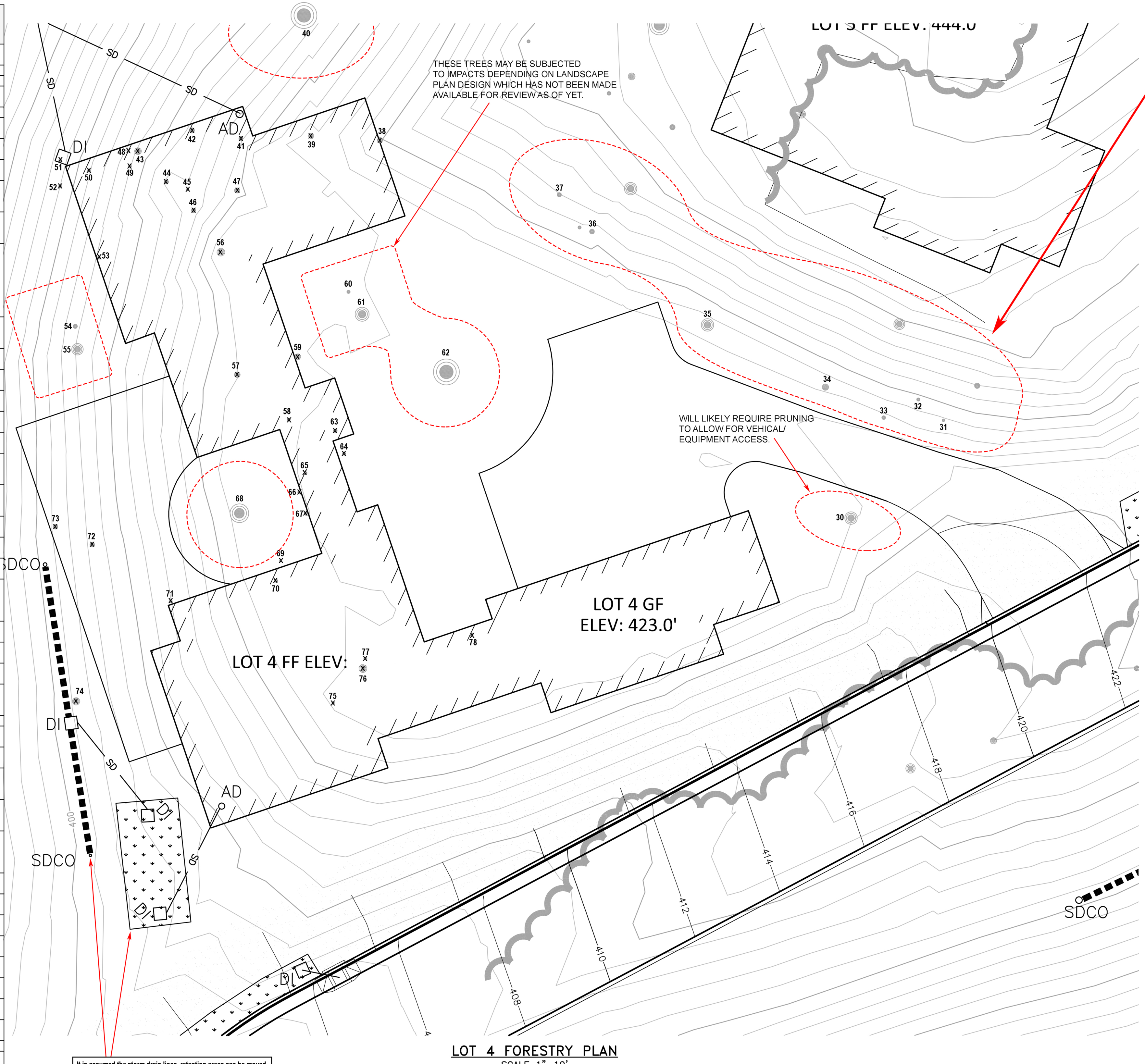
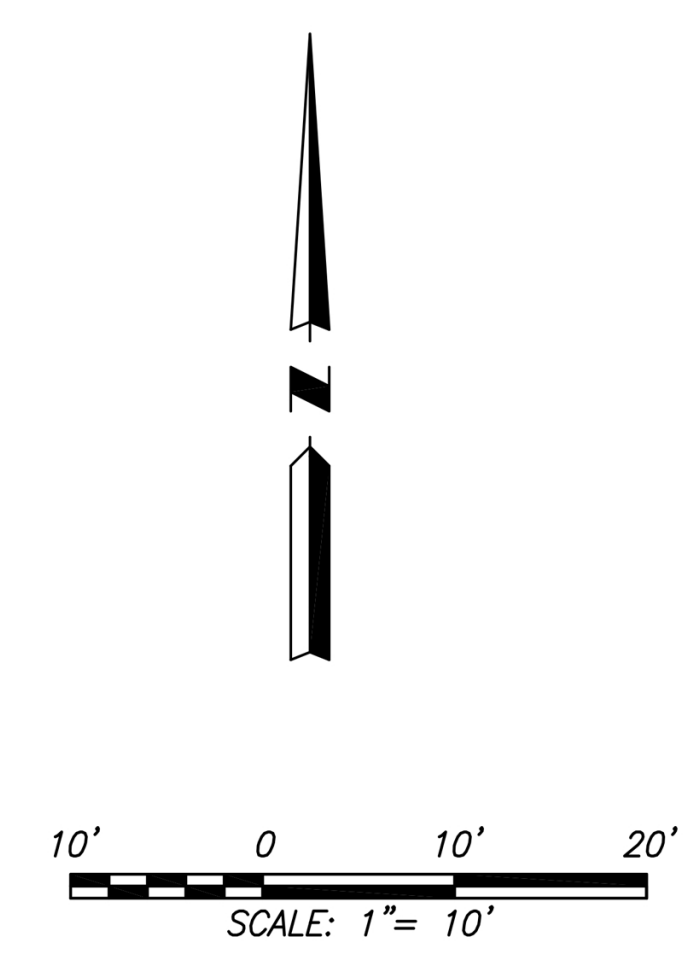


Tree Tag Number	Common Name	Latin Name	Diameter			Health	Structure	Comments	Removal
			Stem 1	Stem 2	Stem 3				
30	coast live oak	<i>Quercus agrifolia</i>	8.1	6.5	6.1	Fair	Fair	Located approx 2 feet from existing driveway. Was poorly pruned recently to clear the road.	
31	coast live oak	<i>Quercus agrifolia</i>	4.8	3.1		Fair	Fair		
32	coast live oak	<i>Quercus agrifolia</i>	5.2			Fair	Fair		
33	coast live oak	<i>Quercus agrifolia</i>	6.2	3.4		Fair	Fair	Canopy encroaches on existing driveway. Was recently pruned to clear the drive.	
34	coast live oak	<i>Quercus agrifolia</i>	6.3	5.3		Fair	Fair	Canopy encroaches on existing driveway.	
35	coast live oak	<i>Quercus agrifolia</i>	7.5	6.5	4.2	Fair to Good	Fair	Canopy extends in to building envelope. May require pruning for development.	
36	coast live oak	<i>Quercus agrifolia</i>	8.2	5.2		Fair to Good	Fair	Canopy symmetry downslope under the shade of larger trees.	
37	coast live oak	<i>Quercus agrifolia</i>	7.3			Fair to Good	Fair	Slight lean and canopy symmetry downslope.	
38	coast live oak	<i>Quercus agrifolia</i>	9.2			Fair	Fair	Asymmetric canopy due to previously sharing canopy space with an adjacent oak. Wildlife nest in canopy.	x
39	coast live oak	<i>Quercus agrifolia</i>	9.9			Poor to Fair	Poor to Fair	Heavily symptomatic of sudden oak death. Bleeding cankers span much of the vascular system.	x
40	coast live oak	<i>Quercus agrifolia</i>	15.2	13.6	13.2	Fair	Fair	It is a large tree with multiple systems arising from a somewhat common attachment near grade. Moderate amount of dead branches in the lower canopy. Will require pruning for development. Surrounding trees are symptomatic of sudden oak death. Base of the tree covered in fill soil.	
41	coast live oak	<i>Quercus agrifolia</i>	9.3			Fair to Good	Fair	Copious soil and debris was recently deposited on the roots and main stem, presumably by large equipment clearing the pad.	x
42	coast live oak	<i>Quercus agrifolia</i>	8.9	5.1		Fair to Good	Fair	Moderate deadwood in lower canopy. There is a fallen tree beside the tree.	x
43	Madrone	<i>Arbutus menziesii</i>	9.2	4.7		Fair to Good	Fair to Good		x
44	coast live oak	<i>Quercus agrifolia</i>	8.7			Fair	Fair	Somewhat suppressed. Canopy is limited and asymmetric due to high density in this area.	x
45	coast live oak	<i>Quercus agrifolia</i>	4.7			Fair	Fair	Leans and symmetry downslope. It is suppressed by adjacent trees.	x
46	Madrone	<i>Arbutus menziesii</i>	9.6			Poor to Fair	Poor to Fair	The subordinate stem is mostly dead.	x
47	coast live oak	<i>Quercus agrifolia</i>	10			Fair	Fair	The main stem in route system was recently buried in soil and debris presumably during clearance of the building pad.	x
48	coast live oak	<i>Quercus agrifolia</i>	4.8			Poor	Poor	It is a small suppressed tree. Much of the vascular tissue is dead as indicated by bark checkering.	x
49	coast live oak	<i>Quercus agrifolia</i>	5			Fair	Fair	Somewhat limited canopy and leggy structure due to competition with adjacent trees.	x
50	coast live oak	<i>Quercus agrifolia</i>	6.2			Fair	Fair	Subordinate stems are dead. Leggy structure due to competition.	x
51	coast live oak	<i>Quercus agrifolia</i>	8.5			Fair to Good	Fair to Good	Upright canopy. Moderate deadwood in lower canopy.	x
52	coast live oak	<i>Quercus agrifolia</i>	12.4	8.5	4.4	Fair to Good	Fair	Acute attachment of downslope stem at 1' above grade. Canopy symmetry is oriented downslope. Light pruning may be necessary for development.	x
53	coast live oak	<i>Quercus agrifolia</i>	5.2			Fair to Good	Fair to Good	Narrow, upright canopy.	x
54	coast live oak	<i>Quercus agrifolia</i>	9.6			Fair to Good	Fair	Canopy symmetry downslope, away from building envelope.	
55	coast live oak	<i>Quercus agrifolia</i>	11			Fair to Good	Fair to Good	Upright canopy. Symmetry away from building envelope.	
56	Grey pine	<i>Pinus sabiniana</i>	17.2			Fair	Poor to Fair	Poorly angled branch attachments. The canopy is sparsely foliated. Base of tree covered with soil and debris.	x
57	coast live oak	<i>Quercus agrifolia</i>	10.3	8.3		Fair	Fair	Canopy extends into building envelope.	x
58	coast live oak	<i>Quercus agrifolia</i>	6.9			Fair to Good	Fair	Directly within building envelope.	x
59	California bay laurel	<i>Umbellularia californica</i>	4.5	3.2		Fair	Fair	Narrow upright canopy.	x
60	coast live oak	<i>Quercus agrifolia</i>	5.1			Fair	Fair	Narrow upright canopy. Bleeding on the lower main stem, possibly from borer. Mechanical damage on main stem.	
61	coast live oak	<i>Quercus agrifolia</i>	8.7	7.3		Fair to Good	Fair	Narrow attachment of stems at grade. Bleeding on larger stem though not consistent with Phytophthora.	
62	Madrone	<i>Arbutus menziesii</i>	8.9	8.8	7.4	Fair to Good	Fair	Normal amount of deadwood in canopy. The tree display is relatively good health and vigor. Will require proper cultural care to maintain as a permanent fixture in the landscape.	
63	coast live oak	<i>Quercus agrifolia</i>	6	5.8		Fair	Fair	Copious small diameter dead twigs in lower canopy.	x
64	coast live oak	<i>Quercus agrifolia</i>	5.2			Fair	Fair	Sharp bend in main stem with canopy symmetry towards proposed driveway.	x
65	coast live oak	<i>Quercus agrifolia</i>	7			Fair	Fair	Somewhat suppressed by adjacent trees. Canopy symmetry east.	x
66	coast live oak	<i>Quercus agrifolia</i>	4.2			Fair	Fair	Limited and upright canopy influenced by competition with adjacent trees.	x
67	coast live oak	<i>Quercus agrifolia</i>	6.8			Fair to Good	Fair	Canopy symmetry east under the canopy of Tree 68.	x
68	coast live oak	<i>Quercus agrifolia</i>	17.7	13.2	7.5	Fair to Good	Fair	Crowded branch structure. Narrow attachment of largest stem could be mitigated with pruning.	
69	California bay laurel	<i>Umbellularia californica</i>	4.2			Fair to Good	Fair	Small, suppressed tree. Foliage is symptomatic of sudden oak death.	x
70	California bay laurel	<i>Umbellularia californica</i>	5			Fair to Good	Fair	Foliage symptomatic of sod.	x
71	coast live oak	<i>Quercus agrifolia</i>	9.2			Fair	Fair	Moderate foliage disease on leaves.	x
72	Toyon	<i>Heteromeles arbutifolia</i>	4.3			Fair to Good	Fair	Typical shrubby form.	x
73	California bay laurel	<i>Umbellularia californica</i>	10.7			Fair to Good	Fair	Leaves symptomatic of SOD.	x
74	Valley oak	<i>Quercus lobata</i>	18.2			Fair	Fair	Somewhat stunted due to site constraints. Strong canopy symmetry upslope. Will require pruning for development.	x
75	coast live oak	<i>Quercus agrifolia</i>	5.6			Fair	Poor to Fair	Strong bend in main stem due to location under larger oak.	x
76	coast live oak	<i>Quercus agrifolia</i>	9.3	7.8		Fair to Good	Fair	Directly within envelope.	x
77	coast live oak	<i>Quercus agrifolia</i>	4.4			Fair	Fair	Leans under the canopy of Tree 76.	x
78	Toyon	<i>Heteromeles arbutifolia</i>	5.9	3.3		Fair	Fair		x
Total Removals									34



Dashed red line indicates the minimum root zone area to be protected. This area can be protected by either excluding workers from the area using at least 4' high metal deer fencing or, if excluding is not practical, a combination of soil and trunk armoring may be used. If fencing is used, it shall be erected by the contractor prior to demolition and inspected by the Project Arborist. See below images for examples of trunk and soil armoring. Specifications for both can be found in the report that is to accompany this map.



APP:	
REVISION	
NO.	DATE
1	
2	
3	
4	

URBAN FORESTRY ASSOCIATES, INC.
 (619) 661-8222 • www.urbanforestry.com

FORESTRY PLAN - LOT 4
 MARINDA HEIGHTS SUBDIVISION
 APN: 001-150-12, 001-171-51, 001-251-31, 001-160-09
 CALIFORNIA

Scale: 1"=10'
 Date: OCTOBER 2017

SHEET
 T-4

\\INFO\Documents\Jobs\2015\15-163 Rothman\DMG\ARBORIST PLAN.dwg, 9/5/2017 10:02:32 AM, hamid, Bluebeam PDF, ARCT_D (24.00 x 36.00 Inches), 1:1