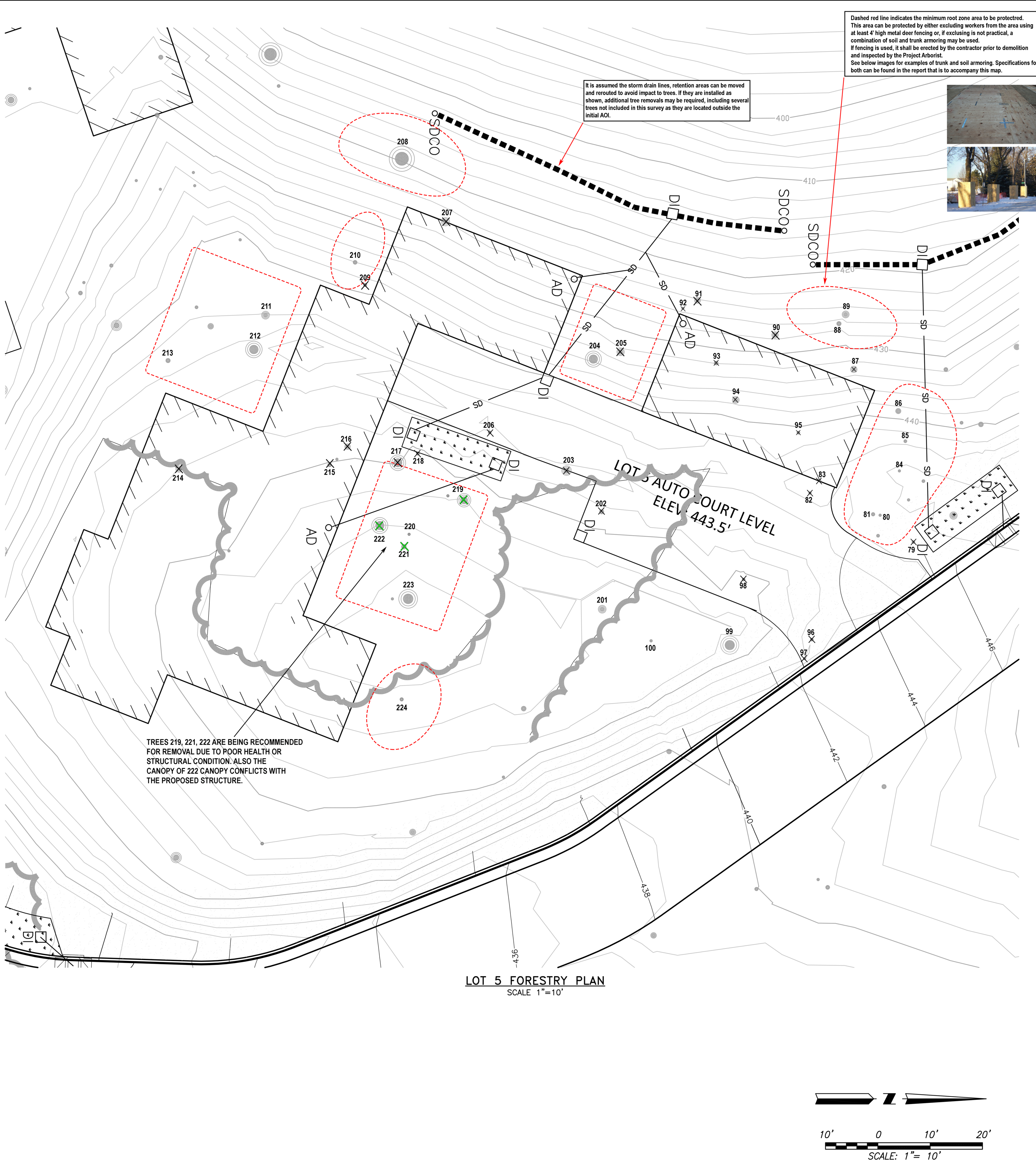


\\INFO\Documents\Jobs\2015\15-163 Rothman\DMG\ARBORIST PLAN.dwg 9/5/2017 10:02:32 AM, hamid, Bluebeam PDF, ARCH_D (24.00 x 36.00 Inches), 1:1

Tree Tag Number	Common Name	Latin Name	Diameter			Health	Structure	Comments	Removal
			Stem 1	Stem 2	Stem 3				
79	coast live oak	<i>Quercus agrifolia</i>	8.9			Fair	Fair	Mechanical damage at 12' on branch over existing driveway.	x
80	coast live oak	<i>Quercus agrifolia</i>	7.8			Fair		Main stem in direct contact with Tree 81. Canopy symmetry away from driveway.	
81	coast live oak	<i>Quercus agrifolia</i>	7.8	5.6		Fair	Fair	Upright canopy. Shares a base with Tree 80.	
82	coast live oak	<i>Quercus agrifolia</i>	7.8			Fair	Fair	Severe mechanical damage on main stem.	x
83	coast live oak	<i>Quercus agrifolia</i>	8.2			Fair	Fair	Canopy symmetry away from driveway. There is a pile of fill soil at its base.	x
84	coast live oak	<i>Quercus agrifolia</i>	8			Fair	Fair	Moderate deadwood in lower canopy. Canopy symmetry down slope.	
85	coast live oak	<i>Quercus agrifolia</i>	12.2			Fair to Good	Fair to Good	Canopy symmetry downslope. Moderate deadwood in lower canopy.	
86	coast live oak	<i>Quercus agrifolia</i>	9.9			Fair to Good	Fair	Lean and canopy symmetry downslope.	
87	coast live oak	<i>Quercus agrifolia</i>	9	8.2		Fair to Good	Fair	Common attachment of stems at approximately 1' above grade. Wildlife nest at tree base. Larger stem extends upslope into building envelope.	x
88	coast live oak	<i>Quercus agrifolia</i>	11			Fair to Good	Fair	Canopy symmetry downslope away from building envelope.	
89	coast live oak	<i>Quercus agrifolia</i>	10.1	5.4	4.7	Fair to Good	Fair	Canopy symmetry downslope under the canopy of tree 88.	
90	coast live oak	<i>Quercus agrifolia</i>	7.1	5.4	4.4	Fair to Good	Fair	Dominant stem extends upslope into building envelope. Moderate deadwood in lower canopy.	x
91	coast live oak	<i>Quercus agrifolia</i>	8.3	6	5.9	Fair	Fair	Somewhat suppressed. Lean and canopy cemetery down slope away from building envelope.	x
92	coast live oak	<i>Quercus agrifolia</i>	5			Poor to Fair	Poor to Fair	Heavily suppressed. The canopy is sparsely foliated.	x
93	coast live oak	<i>Quercus agrifolia</i>	7.8	4.6		Fair to Good	Fair	Canopy symmetry downslope. Located directly within building envelope.	x
94	coast live oak	<i>Quercus agrifolia</i>	10.1	6.3	5.1	Fair to Good	Fair	Soil and debris against tree base.	x
95	coast live oak	<i>Quercus agrifolia</i>	9.6			Fair to Good	Fair to Good	Canopy symmetry mostly away from driveway.	x
96	coast live oak	<i>Quercus agrifolia</i>	8.3			Fair	Fair	Base of tree embedded with soil.	x
97	coast live oak	<i>Quercus agrifolia</i>	5.6			Fair	Fair	Leans across slope into the canopy of Tree 96. Leggy structure.	x
98	Madrone	<i>Arbutus menziesii</i>	7.4	3.8		Fair	Fair	Lean to the north.	x
99	Madrone	<i>Arbutus menziesii</i>	11.3	7	7	Fair	Fair	Approximately 7 stems arising from a common base. A few stems were fire damaged.	
100	coast live oak	<i>Quercus agrifolia</i>	6.3	3.1		Fair	Poor to Fair	The tree is essentially sprout growth from an old stump. There is a sizable decay cavity in the base of main stem.	
201	coast live oak	<i>Quercus agrifolia</i>	16.2			Poor to Fair	Poor to Fair	Leans northeast. The roots were damaged when a fire break was cut with a bulldozer. The canopy is sparse and lacking vigor.	
202	coast live oak	<i>Quercus agrifolia</i>	5.2	4		Fair	Fair	This tree was damaged by heavy equipment presumably when a fire break was cut with a bull dozer.	x
203	coast live oak	<i>Quercus agrifolia</i>	13.3	10.6		Fair to Good	Fair	The root system was damaged when a cut was made to level the building pad or for a fire break.	x
204	coast live oak	<i>Quercus agrifolia</i>	18.5	11.5	9	Fair to Good	Fair	Approx. 6 stems with a common base near grade. Soil and debris has partially buried the root crown. The main stem is set back from the existing driveway approx. 5'.	
205	coast live oak	<i>Quercus agrifolia</i>	8	7.3		Fair	Poor to Fair	Heavy lean across slope. A scaffold limb was headed back to clear the driveway.	x
206	coast live oak	<i>Quercus agrifolia</i>	8.6			Fair	Fair	Located on cut bank. Appears to have been damaged mechanically when the pad was graded.	x
207	coast live oak	<i>Quercus agrifolia</i>	13	9.4	7.8	Fair to Good	Fair	Tree base is buried with soil and debris. Lean and canopy symmetry predominantly upslope.	x
208	coast live oak	<i>Quercus agrifolia</i>	13.6	13.3	11.5	Fair to Good	Fair	It is a large well structured tree. The upslope portion of the tree base is buried with soil and debris.	
209	coast live oak	<i>Quercus agrifolia</i>	9.5			Fair	Fair	Lower trunk buried with soil and debris. Upright canopy form.	x
210	coast live oak	<i>Quercus agrifolia</i>	9.2			Fair	Fair	Upright canopy form. Lower trunk buried with soil and debris. Leans and canopy symmetry downslope.	
211	Pacific madrone	<i>Arbutus menziesii</i>	14.0	10.0		Fair	Fair	Leans heavily west under the canopy of T-212.	
212	coast live oak	<i>Quercus agrifolia</i>	25.5	15.5	12	Fair to Good	Fair	The upslope face of the trunk is buried with soil. There are multiple dead branches over 3" diameter in the lower canopy.	
213	coast live oak	<i>Quercus agrifolia</i>	9.5			Fair to Good	Fair	Strong lean south.	
214	Valley oak	<i>Quercus lobata</i>	12			Poor to Fair	Fair	The canopy is very sparse. Moderate oak gall wasp activity.	x
215	coast live oak	<i>Quercus agrifolia</i>	12.6			Fair to Good	Fair	Lean and canopy symmetry south.	x
216	coast live oak	<i>Quercus agrifolia</i>	6.4	6.3		Fair	Poor to Fair	Acute angle attachment of stems at grade. Southwest lean.	x
217	Madrone	<i>Arbutus menziesii</i>	13	12.2	10.2	Fair to Good	Fair	Minor fire scar and associated decay at the north face of trunk near grade.	x
218	coast live oak	<i>Quercus agrifolia</i>	7.1			Fair	Fair	Lean and canopy symmetry southeast.	x
219	coast live oak	<i>Quercus agrifolia</i>	10.7	10	6.9	Fair	Poor to Fair	The measured stems were once apart of a large multiple stem tree. The tree split apart in the distant past. The most viable living portion of the tree was tagged.	
220	Madrone	<i>Arbutus menziesii</i>	6.2	3.1		Fair to Good	Fair to Good	The canopy is full and vigorous and lacking typical fungal issues.	
221	coast live oak	<i>Quercus agrifolia</i>	14.3			Poor to Fair	Poor	Strong south lean. The canopy is stunted and sparsely foliated. There is a decay cavity on the top of the main scaffold limb at approx. 20' above grade.	
222	coast live oak	<i>Quercus agrifolia</i>	23.3	13.3	9	Fair	Poor to Fair	Strong lean southeast. The canopy is severely asymmetric the lowest scaffold limb hangs low approximately 2' above grade.	
223	coast live oak	<i>Quercus agrifolia</i>	23.6	17.3		Fair	Poor to Fair	The tree has experienced multiple large branch failures. At least four decay cavities exist where large failures have occurred.	
224	coast live oak	<i>Quercus agrifolia</i>	9.1			Fair	Fair to Good	Balanced canopy. Approx. 20' spread.	
Total Removals									24



APP.	NO.	DATE	REVISION	SHEET
	1			
	2			
	3			
	4			
FORESTRY PLAN - LOT 5				
MARINDA HEIGHTS SUBDIVISION				
APN: 001-150-12, 001-171-51, 001-251-31, 001-160-09				
CITY OF FAIRFAX				
CALIFORNIA				
URBAN FORESTRY ASSOCIATES, INC.				
(415) 842-2222 • info@urbanforestry.com				
Scale: 1"=10'				
Date: OCTOBER 2017				
T-5				