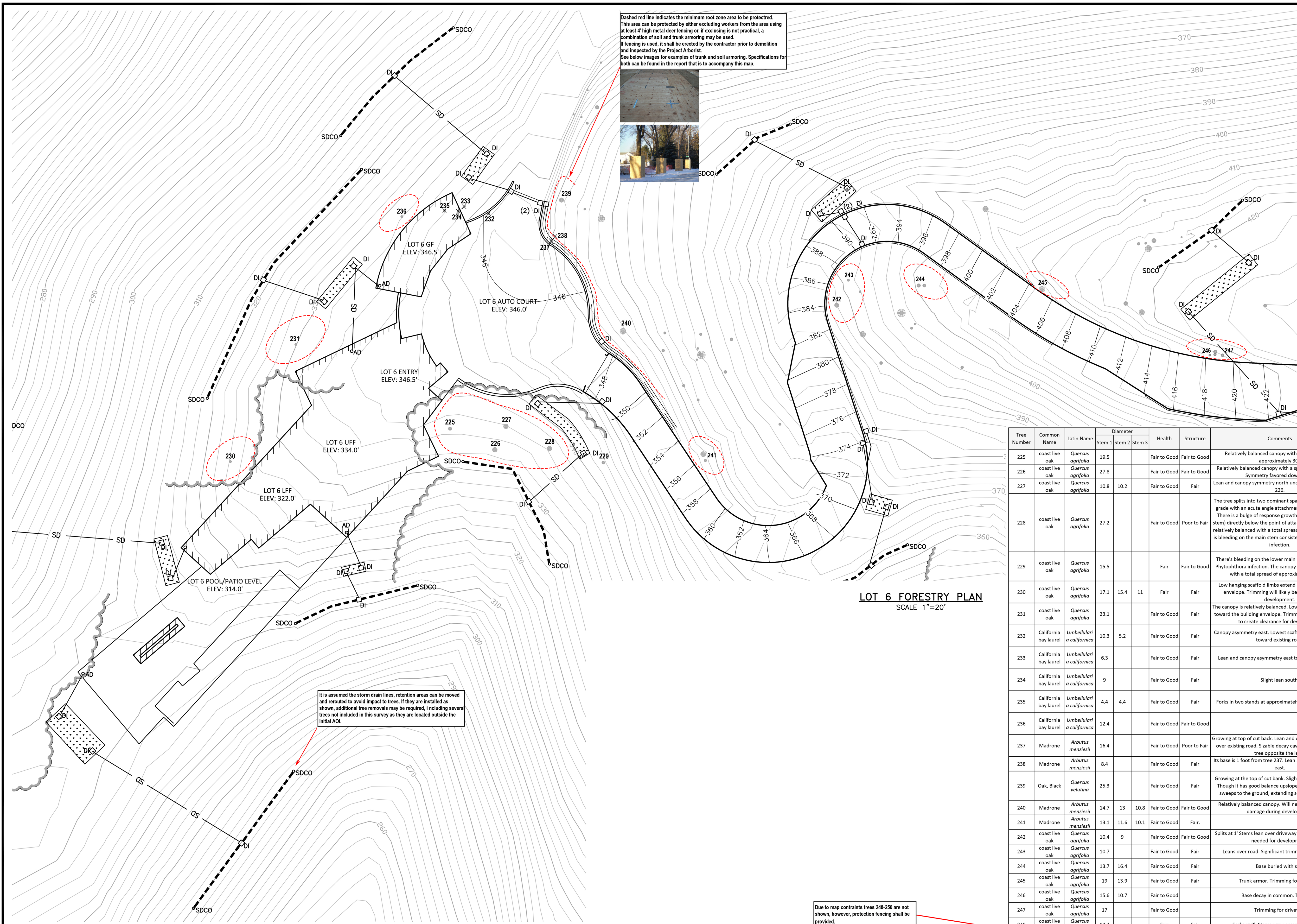


Dashed red line indicates the minimum root zone area to be protected. This area can be protected by either excluding workers from the area using at least 4' high metal deer fencing or, if excluding is not practical, a combination of soil and trunk armoring may be used. If fencing is used, it shall be erected by the contractor prior to demolition and inspected by the Project Arborist. See below images for examples of trunk and soil armoring. Specifications for both can be found in the report that is to accompany this map.

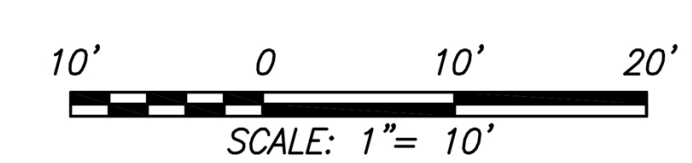


LOT 6 FORESTRY PLAN
SCALE 1"=20'

It is assumed the storm drain lines, retention areas can be moved and rerouted to avoid impact to trees. If they are installed as shown, additional tree removals may be required, including several trees not included in this survey as they are located outside the initial ADI.

Due to map constraints trees 248-250 are not shown, however, protection fencing shall be provided.

Tree Number	Common Name	Latin Name	Diameter			Health	Structure	Comments	Removal
			Stem 1	Stem 2	Stem 3				
225	coast live oak	<i>Quercus agrifolia</i>	19.5			Fair to Good	Fair to Good	Relatively balanced canopy with a total spread of approximately 30'.	
226	coast live oak	<i>Quercus agrifolia</i>	27.8			Fair to Good	Fair to Good	Relatively balanced canopy with a spread of approx. 40'. Symmetry favored downslope.	
227	coast live oak	<i>Quercus agrifolia</i>	10.8	10.2		Fair to Good	Fair	Lean and canopy symmetry north under the canopy of Tree 226.	
228	coast live oak	<i>Quercus agrifolia</i>	27.2			Fair to Good	Poor to Fair	The tree splits into two dominant spars at approx. 4' above grade with an acute angle attachment and included bark. There is a bulge of response growth (on both side of the stem) directly below the point of attachment. The canopy is relatively balanced with a total spread of approx. 45'. There is bleeding on the main stem consistent with Phytophthora infection.	
229	coast live oak	<i>Quercus agrifolia</i>	15.5			Fair	Fair to Good	There's bleeding on the lower main stem consistent with Phytophthora infection. The canopy is relatively balanced with a total spread of approximately 25 feet.	
230	coast live oak	<i>Quercus agrifolia</i>	17.1	15.4	11	Fair	Fair	Low hanging scaffold limbs extend toward the building envelope. Trimming will likely be necessary during development.	
231	coast live oak	<i>Quercus agrifolia</i>	23.1			Fair to Good	Fair	The canopy is relatively balanced. Low scaffold limbs extend toward the building envelope. Trimming may be necessary to create clearance for development.	
232	California bay laurel	<i>Umbellularia californica</i>	10.3	5.2		Fair to Good	Fair	Canopy asymmetry east. Lowest scaffold limb extends east toward existing road.	X
233	California bay laurel	<i>Umbellularia californica</i>	6.3			Fair to Good	Fair	Lean and canopy asymmetry east toward existing road.	X
234	California bay laurel	<i>Umbellularia californica</i>	9			Fair to Good	Fair	Slight lean south.	X
235	California bay laurel	<i>Umbellularia californica</i>	4.4	4.4		Fair to Good	Fair	Forks in two stands at approximately 3 feet above grade.	X
236	California bay laurel	<i>Umbellularia californica</i>	12.4			Fair to Good	Fair to Good		
237	Madrone	<i>Arbutus menziesii</i>	16.4			Fair to Good	Poor to Fair	Growing at top of cut bank. Lean and canopy symmetry west over existing road. Sizeable decay cavity in the base of the tree opposite the lean.	
238	Madrone	<i>Arbutus menziesii</i>	8.4			Fair to Good	Fair	Its base is 1 foot from tree 237. Lean and canopy symmetry east.	
239	Oak, Black	<i>Quercus velutina</i>	25.3			Fair to Good	Fair	Growing at the top of cut bank. Slightly undercut on bank. Though it has good balance upslope. A 16' scaffold limb sweeps to the ground, extending south over cut bank.	
240	Madrone	<i>Arbutus menziesii</i>	14.7	13	10.8	Fair to Good	Fair to Good	Relatively balanced canopy. Will need pruning to avoid damage during development.	
241	Madrone	<i>Arbutus menziesii</i>	13.1	11.6	10.1	Fair to Good	Fair		
242	coast live oak	<i>Quercus agrifolia</i>	10.4	9		Fair to Good	Fair to Good	Splits at 1' stems lean over driveway. Significant trimming needed for development.	
243	coast live oak	<i>Quercus agrifolia</i>	10.7			Fair to Good	Fair	Leans over road. Significant trimming for driveway.	
244	coast live oak	<i>Quercus agrifolia</i>	13.7	16.4		Fair to Good	Fair	Base buried with soil.	
245	coast live oak	<i>Quercus agrifolia</i>	19	13.9		Fair to Good	Fair	Trunk armor. Trimming for driveway	
246	coast live oak	<i>Quercus agrifolia</i>	15.6	10.7		Fair to Good		Base decay in common. Trim ming	
247	coast live oak	<i>Quercus agrifolia</i>	17			Fair to Good		Trimming for driveway	
248	coast live oak	<i>Quercus agrifolia</i>	14.4			Fair	Fair	Forks at 2'. Stems wrap around each other	
249	coast live oak	<i>Quercus agrifolia</i>	19.4	14.2		Fair	Fair	Top of driveway. Base buried. Trimming	
250	coast live oak	<i>Quercus agrifolia</i>	5.1			Fair to Poor	Fair	Bleeding on main stem consistent with Phytophthora infection.	
Total Removals									4



URBAN FORESTRY ASSOCIATES, INC.
 (619) 661-8212 • www.urbanforestry.com

FORESTRY PLAN - LOT 6
MARINDA HEIGHTS SUBDIVISION
 APN: 001-150-12, 001-171-51, 001-251-31, 001-160-09

CITY OF FAIRFAX

DATE: OCTOBER 2017

NO.	DATE	REVISION
1		
2		
3		
4		

SHEET
T-6

\\INFO\Documents\Jobs\2015\15-163 Rothman\DWG\ARBORIST PLAN.dwg, 9/5/2017 10:02:32 AM, hamid, Bluebeam PDF, ARCH_D (24.00 x 36.00 Inches), 1:1