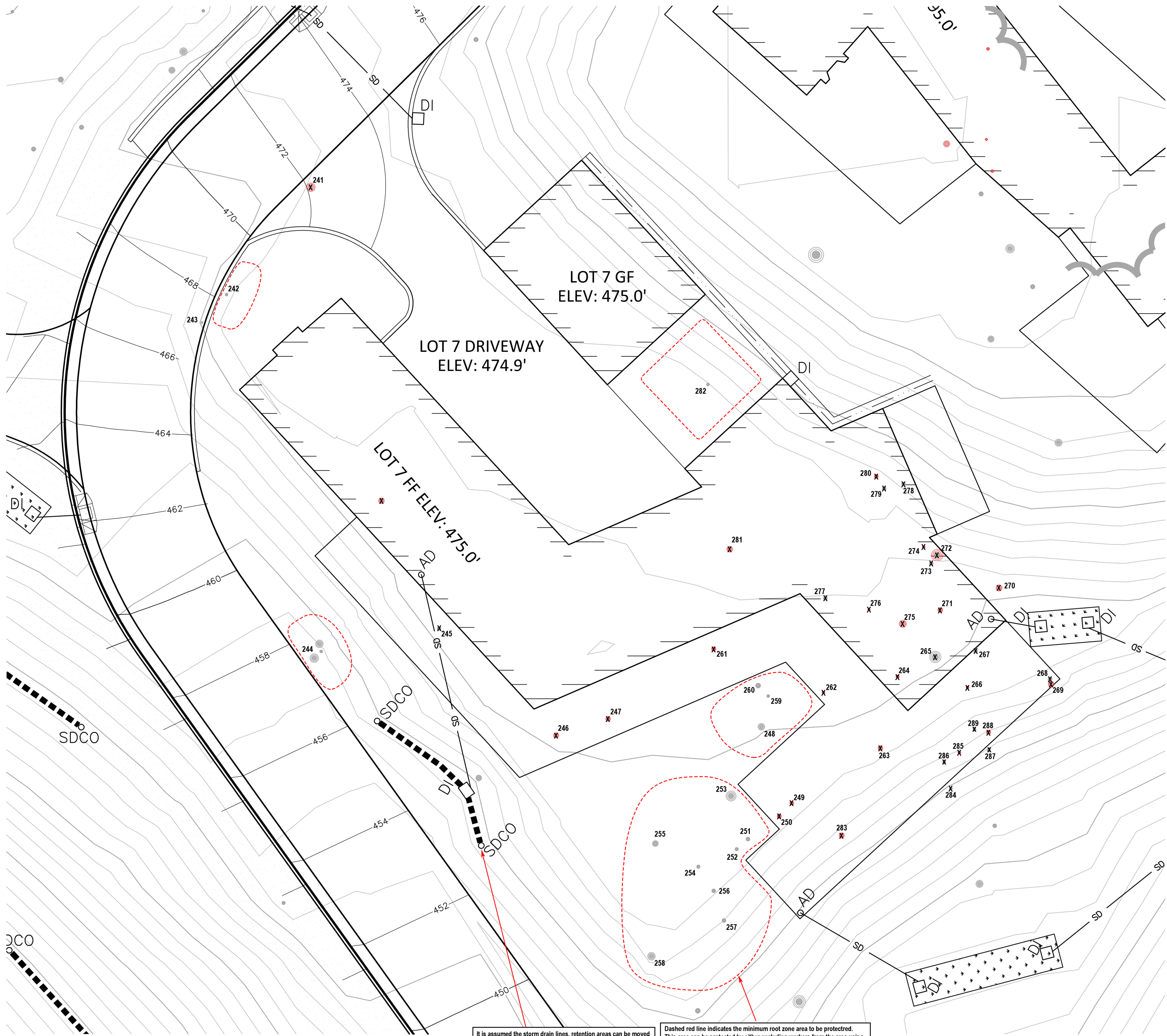


\\INFO\Documents\jobs\2015\15-163\_Rothman\DWG\ARBORIST PLAN.dwg, 9/5/2017 10:02:52 AM, Janice Bluebeam PDF, ARCH-D, 24.00, x, 35.00, Inches, 1:1

Tree Tag Number	Common Name	Latin Name	Diameter			Health	Structure	Comments	Removal
			Stem 1	Stem 2	Stem 3				
241	coast live oak	<i>Quercus agrifolia</i>	7	6.8	5.5	Fair	Fair	Balanced canopy spreading approx. 20'.	X
242	coast live oak	<i>Quercus agrifolia</i>	8.3	6.2	3	Fair	Fair	Multiple stems arising from grade. Balanced canopy with a spread of approx. 15'.	
243	coast live oak	<i>Quercus agrifolia</i>	5.5	3.8		Fair	Fair	Canopy oriented away from building envelope, toward main road.	
244	coast live oak	<i>Quercus agrifolia</i>	9.5	8.7	7.3	Fair to Good	Fair	Canopy symmetry favored downslope.	
245	coast live oak	<i>Quercus agrifolia</i>	5.6			Fair to Good	Fair	Surrounded by brush and small oaks.	X
246	coast live oak	<i>Quercus agrifolia</i>	7.9	5.9		Fair	Fair to Good	Somewhat sparse canopy.	X
247	coast live oak	<i>Quercus agrifolia</i>	6.5	4.9		Fair to Good	Fair to Good	Copious small diameter deadwood in canopy.	X
248	coast live oak	<i>Quercus agrifolia</i>	11.3	7.7		Fair to Good	Fair to Good	Copious deadwood in lower canopy.	
249	coast live oak	<i>Quercus agrifolia</i>	6.2			Fair	Fair	Suppressed. Somewhat sparse canopy.	X
250	coast live oak	<i>Quercus agrifolia</i>	6.9			Fair	Fair	Upright canopy form. The canopy is somewhat sparse.	X
251	coast live oak	<i>Quercus agrifolia</i>	7.8			Fair	Fair	Canopy symmetry southeast. Canopy is upright and narrow.	
252	coast live oak	<i>Quercus agrifolia</i>	6.2			Fair	Fair	Somewhat suppressed. The canopy is narrow and upright with symmetry south, southeast.	
253	coast live oak	<i>Quercus agrifolia</i>	8.3	8.3	7.1	Fair to Good	Fair	Multiple dead branch oaks in lower canopy. Narrow angle of attachment of stems at 1' above grade.	
254	coast live oak	<i>Quercus agrifolia</i>	7.1			Fair	Fair	Upright canopy due to competition.	
255	coast live oak	<i>Quercus agrifolia</i>	6.8	2	2	Fair	Fair	Multiple stems arising from grade.	
256	coast live oak	<i>Quercus agrifolia</i>	5.8			Fair	Fair	Somewhat suppressed.	
257	coast live oak	<i>Quercus agrifolia</i>	7.9			Fair to Good	Fair to Good	Relatively balanced canopy despite tight spacing with adjacent trees.	
258	coast live oak	<i>Quercus agrifolia</i>	8	7.3		Fair to Good	Fair	Balanced canopy with an approximate spread of 20'.	
259	coast live oak	<i>Quercus agrifolia</i>	6.1			Fair	Fair	Somewhat suppressed.	
260	coast live oak	<i>Quercus agrifolia</i>	6.8	6.3	4.2	Fair to Good	Fair	Canopy symmetry northwest.	
261	coast live oak	<i>Quercus agrifolia</i>	5.2	4		Fair	Fair	Shrubby form. Multiple low hanging branches.	X
262	coast live oak	<i>Quercus agrifolia</i>	4.6			Fair to Good	Fair	Narrow canopy and upright form.	X
263	coast live oak	<i>Quercus agrifolia</i>	8.3	4.3		Fair	Fair	Slight lean and canopy symmetry southwest.	X
264	coast live oak	<i>Quercus agrifolia</i>	8			Fair	Fair	Suppressed by adjacent trees. Slight lean and canopy symmetry southwest.	X
265	Madrone	<i>Arbutus menziesii</i>	11	10.6	10.4	Fair	Fair	Typical amounts of deadwood in canopy.	X
266	California bay laurel	<i>Umbellularia californica</i>	4.3	3.4		Fair to Good	Fair	Leaves symptomatic of SOD.	X
267	California bay laurel	<i>Umbellularia californica</i>	4.2			Fair	Fair	Heavily suppressed.	X
268	coast live oak	<i>Quercus agrifolia</i>	5.8			Fair to Good	Fair	Strong lean and canopy symmetry downslope.	X
269	coast live oak	<i>Quercus agrifolia</i>	5.8			Fair	Fair		
270	coast live oak	<i>Quercus agrifolia</i>	10.2	6		Fair to Good	Fair to Good	Canopy symmetry northeast away from building envelope.	X
271	coast live oak	<i>Quercus agrifolia</i>	7.2			Fair to Good	Fair	Slight lean and canopy symmetry northwest.	X
272	coast live oak	<i>Quercus agrifolia</i>	11.5			Fair to Good	Fair to Good	Strong leans canopy symmetry upslope.	X
273	coast live oak	<i>Quercus agrifolia</i>	10.4			Fair to Good	Fair to Good		X
274	coast live oak	<i>Quercus agrifolia</i>	5.2	3		Poor to Fair	Poor to Fair	Heavily suppressed. The canopy is sparse.	X
275	coast live oak	<i>Quercus agrifolia</i>	15.9			Fair to Good	Fair	Copious deadwood in lower canopy.	X
276	coast live oak	<i>Quercus agrifolia</i>	4.8			Fair	Fair	West lean.	X
277	coast live oak	<i>Quercus agrifolia</i>	6.3			Fair to Good	Fair	West lean. Somewhat suppressed under the canopy of Tree 276.	X
278	coast live oak	<i>Quercus agrifolia</i>	7.2			Fair to Good	Fair	It's canopy is upright and limited due to tight spacing with adjacent trees.	X
279	coast live oak	<i>Quercus agrifolia</i>	6.2			Poor to Fair	Fair	Bleeding on lower main stem is consistent with SOD.	X
280	coast live oak	<i>Quercus agrifolia</i>	7.2	6.8	6.5	Poor to Fair	Fair	Girdling on main stem is consistent with SOD. Adjacent bay tree leaves are also symptomatic.	X
281	coast live oak	<i>Quercus agrifolia</i>	5	5	3	Fair	Fair	Two largest stems meet at grade.	X
282	coast live oak	<i>Quercus agrifolia</i>	7.3			Fair to Good	Fair	Canopy is balanced with approximate spread of 15'.	
283	coast live oak	<i>Quercus agrifolia</i>	11.3	8.0		Poor to Fair	Fair	Sparse canopy.	X
284	coast live oak	<i>Quercus agrifolia</i>	8.1			Fair	Fair	Lean downslope.	X
285	coast live oak	<i>Quercus agrifolia</i>	6.2			Fair	Fair	Leggy structure.	X
286	coast live oak	<i>Quercus agrifolia</i>	5.5			Fair	Fair	Leggy structure. The canopy is somewhat sparse.	X
287	coast live oak	<i>Quercus agrifolia</i>	5.5			Fair	Fair	Leggy. Leans downslope.	X
288	coast live oak	<i>Quercus agrifolia</i>	8.8			Fair	Fair	Leans downslope.	X
289	coast live oak	<i>Quercus agrifolia</i>	4.7			Fair	Fair	Leggy structure.	X
Total Removals									34



It is assumed the storm drain lines, retention areas can be moved and rerouted to avoid impact to trees. If they are installed as shown, additional tree removals may be required, including several trees not included in this survey as they are located outside the initial AOI.

Dashed red line indicates the minimum root zone area to be protected. This area can be protected by either excluding workers from the area using at least 4' high metal deer fencing or, if excluding is not practical, a combination of soil and trunk armoring may be used. If fencing is used, it shall be erected by the contractor prior to demolition and inspected by the Project Arborist. See below images for examples of trunk and soil armoring. Specifications for both can be found in the report that is to accompany this map.

