

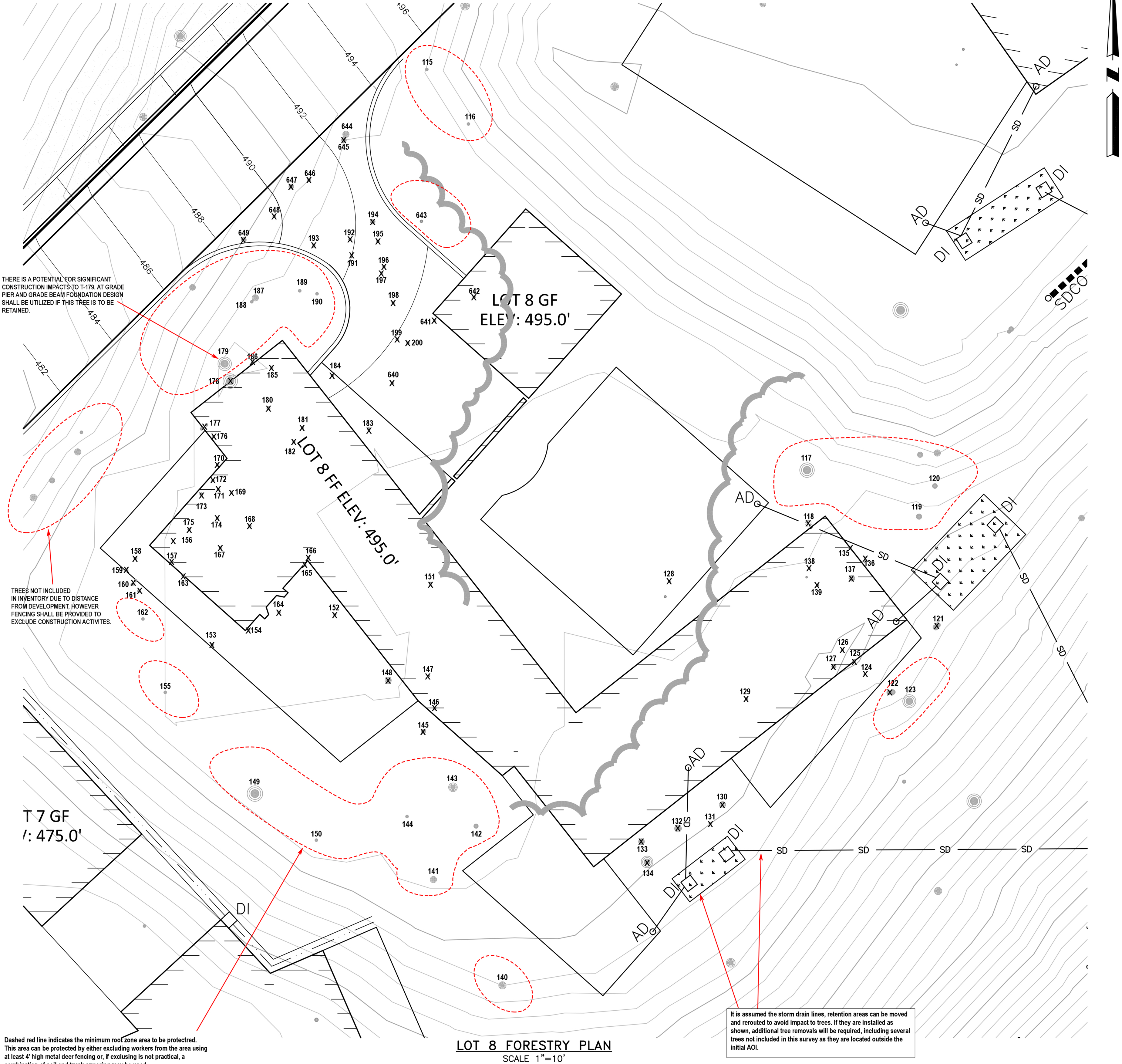
\\INFO\Documents\Jobs\2015\15-163 Rothman\DMG\ARBORIST PLAN.dwg 9/5/2017 10:02:32 AM, hamid, Bluebeam PDF, ARCT D (24.00 x 36.00 Inches), 1:1

Tree Tag Number	Common Name	Latin Name	Diameter			Health	Structure	Comments	Removal
			Stem 1	Stem 2	Stem 3				
115	Madrone	<i>Arbutus menziesii</i>	10.5	6.9		Fair to Good	Fair	Vertically oriented stems extend above driveway.	
116	coast live oak	<i>Quercus agrifolia</i>	5			Poor	Poor to Fair	The lower main stem is riddled with beetle frass.	
117	Madrone	<i>Arbutus menziesii</i>	6.4	6.3	5.5	Fair to Good	Fair	Seven stems total with a common attachment near grade.	
118	coast live oak	<i>Quercus agrifolia</i>	6.6	4.6	2.7	Fair to Good	Fair	Canopy symmetry west.	x
119	coast live oak	<i>Quercus agrifolia</i>	9.8	7		Fair	Fair	Embedded branch at 4 feet on main stem. Broken branch suspended and canopy in east extending from.	
120	coast live oak	<i>Quercus agrifolia</i>	9.9			Fair	Fair	Co-dominant stems at approximately 3' above grade. The canopy is somewhat sparse.	
121	coast live oak	<i>Quercus agrifolia</i>	10	6.2		Poor to Fair	Fair	Moderate canopy dieback in west quadrant. The canopy is sparse.	x
122	coast live oak	<i>Quercus agrifolia</i>	9.6			Fair	Fair	Formerly shared canopy space with a fallen oak influencing its northwest canopy symmetry.	x
123	coast live oak	<i>Quercus agrifolia</i>	14.7			Poor to Fair	Poor	It failed some time ago and persisted. Major scaffold limb is laying on ground. There is a large decay cavity in the lower main stem.	
124	coast live oak	<i>Quercus agrifolia</i>	5			Fair	Fair	Leggy structure due to former light suppression with Annie fallen oak.	x
125	coast live oak	<i>Quercus agrifolia</i>	8.2			Fair to Good	Fair	Lean and canopy symmetry west. Relatively leggy structure.	x
126	coast live oak	<i>Quercus agrifolia</i>	5			Fair	Fair	Lean and canopy symmetry west. Leggy structure.	x
127	coast live oak	<i>Quercus agrifolia</i>	7.3	7.1		Fair to Good	Fair	Lean and strong canopy asymmetry west.	x
128	coast live oak	<i>Quercus agrifolia</i>	5			Fair to Good	Fair	Copious low sprouting near grade.	x
129	coast live oak	<i>Quercus agrifolia</i>	4.2	3.1		Fair to Good	Fair to Good	Shrubby form.	x
130	coast live oak	<i>Quercus agrifolia</i>	12.4			Fair to Good	Fair	Suboptimal attachment of stems at 2' above grade. Lean and canopy symmetry north.	x
131	coast live oak	<i>Quercus agrifolia</i>	6.3			Poor to Fair	Poor to Fair	Suppressed by larger trees.	x
132	coast live oak	<i>Quercus agrifolia</i>	6.8	6.1		Fair to Good	Fair	Subordinate stem extends into building envelope. Dominant stem is leggy and leans northeast.	
133	coast live oak	<i>Quercus agrifolia</i>	8.4	8.1	5.1	Fair to Good	Fair	Northwest lean and canopy symmetry.	
134	coast live oak	<i>Quercus agrifolia</i>	11.9	9	8.2	Fair to Good	Fair	Acute attachment of stems at 1' above grade. As a whole the tree has poor branch attachments.	
135	coast live oak	<i>Quercus agrifolia</i>	5.6			Fair	Fair	Leggy structure due to tight spacing in a cluster of small oaks.	x
136	coast live oak	<i>Quercus agrifolia</i>	4.1			Fair	Fair	Leggy structure due to tight spacing in a cluster of oaks.	x
137	coast live oak	<i>Quercus agrifolia</i>	4.8	3.8		Fair	Fair	Leggy structure.	x
138	coast live oak	<i>Quercus agrifolia</i>	4.3			Fair	Fair	Somewhat suppressed and displays leggy structure due to tight spacing in a cluster of oaks.	x
139	coast live oak	<i>Quercus agrifolia</i>	8.2			Fair	Fair	It is the dominant tree in the cluster of oaks.	x
140	coast live oak	<i>Quercus agrifolia</i>	15	7		Fair to Good	Fair	The canopy is composed of multiple stems with a common attachment at approx. 3' above grade. The canopy is balanced with a spread of approx. 30'.	
141	coast live oak	<i>Quercus agrifolia</i>	11.5			Fair to Good	Fair to Good	The canopy is balanced with a spread of approx. 20'.	
142	coast live oak	<i>Quercus agrifolia</i>	5.8	3.2		Fair	Fair	The subordinate stem is attached to the main stem at 3' above grade.	
143	coast live oak	<i>Quercus agrifolia</i>	6.2	4.8	4.7	Fair	Fair	Low branching at 3' above grade. Generally poor branch attachments.	
144	coast live oak	<i>Quercus agrifolia</i>	4.4			Fair	Fair	Forks in to two stems at approx. 4' above grade.	
145	Madrone	<i>Arbutus menziesii</i>	5	3.5		Poor to Fair	Fair	The canopy has died back significantly.	x
146	coast live oak	<i>Quercus agrifolia</i>	5.5			Fair to Good	Fair		
147	Italian Stone pine	<i>Pinus pinea</i>	5.2			Fair	Fair	Juvenile tree with a somewhat sparse canopy.	x
148	Madrone	<i>Arbutus menziesii</i>	6.3	5.3		Fair	Fair	The two stems have a common attachment at grade. There is scattered tieback of small diameter branches in the canopy.	
149	Madrone	<i>Arbutus menziesii</i>	8.2	8.2	8	Poor to Fair	Fair	The root system is slightly exposed. The tree is experienced moderate canopy die back.	
150	coast live oak	<i>Quercus agrifolia</i>	4.3			Fair	Fair	Juvenile tree.	
151	coast live oak	<i>Quercus agrifolia</i>	5.5			Fair to Good	Fair		x
152	Madrone	<i>Arbutus menziesii</i>	7			Fair	Fair	Scattered die back of small diameter twigs.	x
153	Madrone	<i>Arbutus menziesii</i>	8.1	4.5		Fair	Fair	Lean and canopy symmetry east. The subordinate stem leans heavily east.	x
154	Madrone	<i>Arbutus menziesii</i>	5			Fair to Good	Fair	Leggy structure. Lean and canopy symmetry east.	x
155	Madrone	<i>Arbutus menziesii</i>	14.2	12.1	10	Fair	Fair	There is a decay cavity associated with fire in the lower portion of the largest stem. There is scattered die back of small diameter twigs. Canopy symmetry for predominantly south.	
156	coast live oak	<i>Quercus agrifolia</i>	15.4	15.3		Poor to Fair	Poor	The tree is composed of multiple spars with a common attachment near grade. At least four stems died at some point presumably from fire. The two living stems lean heavily southwest and east.	x
157	coast live oak	<i>Quercus agrifolia</i>	6.9			Fair	Fair	Leggy structure. Growing up through the east stem of Tree 156.	x
158	Madrone	<i>Arbutus menziesii</i>	5.4			Fair	Fair	Leggy structure. Moderate lean west.	x
159	Madrone	<i>Arbutus menziesii</i>	9.4			Fair to Good	Fair	Formerly a multiple stem tree, the living stem means moderately west. Two dead stems are attached to the common base near grade.	x
160	Madrone	<i>Arbutus menziesii</i>	7	5.5		Fair to Good	Fair	To stands with a common attachment in your grade. Larger stem leans north, subordinates stem leans south.	x
161	Madrone	<i>Arbutus menziesii</i>	6.1			Fair	Fair	Leggy structure, and upright form.	x
162	Madrone	<i>Arbutus menziesii</i>	5.7			Fair	Fair	The main stem makes an approximate 90 degree turn at approximately 3 feet above grade. Strong lean southwest.	
163	Madrone	<i>Arbutus menziesii</i>	4.2			Fair	Poor to Fair	Very leggy structure. Strong lean east.	x
164	Madrone	<i>Arbutus menziesii</i>	4.6			Fair	Fair	Leggy structure.	x
165	Madrone	<i>Arbutus menziesii</i>	6.3	3.6		Poor to Fair	Fair	Moderate canopy dieback and deadwood in lower canopy.	x
166	Madrone	<i>Arbutus menziesii</i>	5.5			Poor to Fair	Fair	Leggy structure. East lean. Scattered dieback of small diameter twig throughout the canopy.	x
167	Madrone	<i>Arbutus menziesii</i>	6.2			Fair	Fair	East lean. Scattered die back of small diameter twigs.	x
168	Madrone	<i>Arbutus menziesii</i>	4.5			Fair	Fair	Leggy structure. Leans east.	x
169	Madrone	<i>Arbutus menziesii</i>	5.1			Fair	Fair	Leggy structure. East lean.	x
170	Madrone	<i>Arbutus menziesii</i>	10.6			Fair to Good	Fair	Low live crown ratio. Scaffold limbs in lower canopy have died back. The tree leans moderately east.	x
171	Madrone	<i>Arbutus menziesii</i>	5.1			Fair	Fair	Leggy structure and moderate lean east.	x
172	Madrone	<i>Arbutus menziesii</i>	4.4			Fair	Fair	Leggy structure and lean southwest.	x
173	Madrone	<i>Arbutus menziesii</i>	7.3	6.4	6.9	Fair	Fair	Common attachment of stems at grade. There is die back of small diameter twigs throughout the canopy.	x
174	Madrone	<i>Arbutus menziesii</i>	4.2			Fair	Fair	Leggy structure. Lean and canopy symmetry east.	x
175	Madrone	<i>Arbutus menziesii</i>	4.2			Fair	Fair	Small suppressed tree.	x
176	Madrone	<i>Arbutus menziesii</i>	7			Fair to Good	Fair	Somewhat leggy structure.	x
177	Madrone	<i>Arbutus menziesii</i>	8.1	6.6	6.1	Fair to Good	Fair	Common attachment stems near grade. There is a small decay cavity in the base of the tree.	x
178	Madrone	<i>Arbutus menziesii</i>	11	9.6	9.1	Fair	Fair	Scattered dieback of small diameter twigs.	x
179	coast live oak	<i>Quercus agrifolia</i>	9.2	7.9	7.5	Fair to Good	Fair	Collection of stems from a relatively common base at approx. 2' above grade. There is decay in the common base. The stems are oriented west.	
180	Madrone	<i>Arbutus menziesii</i>	6.5			Fair	Fair	There is a jog in the main stem at approximately 2' above grade. Moderate east lean.	x
181	Madrone	<i>Arbutus menziesii</i>	5.8			Fair	Fair	Leggy structure and slight lean east.	x
182	Madrone	<i>Arbutus menziesii</i>	4.6			Fair	Fair	Slight lean east. Leggy structure.	x
183	Madrone	<i>Arbutus menziesii</i>	4.8	2.8		Poor to Fair	Fair	Sparse canopy and moderate canopy dieback.	x
184	Madrone	<i>Arbutus menziesii</i>	5.7			Fair to Good	Fair	The tree forks into three stems at approximately 6 feet above grade. The largest stem has a 1.5 foot long necrotic strip.	x
185	Madrone	<i>Arbutus menziesii</i>	5			Fair to Good	Fair	Leggy structure and slight lean east.	x
186	Madrone	<i>Arbutus menziesii</i>	4.1			Fair	Fair	There is a 90° jog in the main stem at approximately 3 feet above grade. Strong lean north east.	x
187	Madrone	<i>Arbutus menziesii</i>	7			Fair	Fair	Located at top of cut bank. Relatively balanced, upright, canopy.	
188	Madrone	<i>Arbutus menziesii</i>	5.4			Fair	Fair	Leggy structure and slight lean northeast.	
189	Madrone	<i>Arbutus menziesii</i>	6.2			Fair	Fair	Leggy structure and slight lean northeast.	
190	Madrone	<i>Arbutus menziesii</i>	4.4			Fair	Fair	Leggy structure.	
191	Madrone	<i>Arbutus menziesii</i>	3.8			Fair	Poor to Fair	Leggy structure and suppressed.	x
192	Madrone	<i>Arbutus menziesii</i>	5			Fair	Fair	Very leggy structure and strong lean northeast.	x
193	Madrone	<i>Arbutus menziesii</i>	4.2			Fair	Fair	Leggy structure.	x
194	Madrone	<i>Arbutus menziesii</i>	4.8	3	2.5	Fair	Fair	Common attachment of stems near grade. Slight lean northeast.	x
195	Madrone	<i>Arbutus menziesii</i>	4.2			Fair	Fair		x
196	Madrone	<i>Arbutus menziesii</i>	4.4			Fair	Fair	Scattered dieback of small diameter twigs.	x
197	Madrone	<i>Arbutus menziesii</i>	3.8	2.1		Fair	Fair	Leggy structure. Moderate amounts of small diameter deadwood in canopy.	x
198	Madrone	<i>Arbutus menziesii</i>	4.2			Fair	Fair	Leggy structure.	x
199	Madrone	<i>Arbutus menziesii</i>	4.1			Poor to Fair	Fair	Sparsely foliated.	x
200	Madrone	<i>Arbutus menziesii</i>	4	4		Poor to Fair	Fair	Sparsely foliated.	x
640	Madrone	<i>Arbutus menziesii</i>	4.7	3		Poor to Fair	Fair	Copious deadwood in lower canopy. Sparsely foliated.	x
641	Madrone	<i>Arbutus menziesii</i>	4.2			Poor to Fair	Fair	Sparse canopy.	x
642	Madrone	<i>Arbutus menziesii</i>	4.3	2.9		Poor to Fair	Fair	Sparse canopy.	x
643	Madrone	<i>Arbutus menziesii</i>	4.7	2.8		Fair	Fair	Scattered dieback of small diameter twigs.	
644	Madrone	<i>Arbutus menziesii</i>	10.2			Poor to Fair	Fair	Scattered dieback of small diameter twigs.	x
645	Madrone	<i>Arbutus menziesii</i>	7.7	5.3		Fair	Fair	Moderate deadwood in lower canopy.	x
646	Madrone	<i>Arbutus menziesii</i>	6.8			Fair	Fair	Slight lean northeast.	x
647	Madrone	<i>Arbutus menziesii</i>	9.4	5.3		Fair	Fair		x
648	Madrone	<i>Arbutus menziesii</i>	8.8			Dead	Extremely Poor		x
649	Madrone	<i>Arbutus menziesii</i>	10.6	9.5		Fair	Fair	Acute attachment of subordinate spar. The subordinate stem leans heavily east.	x
							Total Removals		72

THERE IS A POTENTIAL FOR SIGNIFICANT CONSTRUCTION IMPACTS TO T-179 AT GRADE PIER AND GRADE BEAM FOUNDATION DESIGN SHALL BE UTILIZED IF THIS TREE IS TO BE RETAINED.

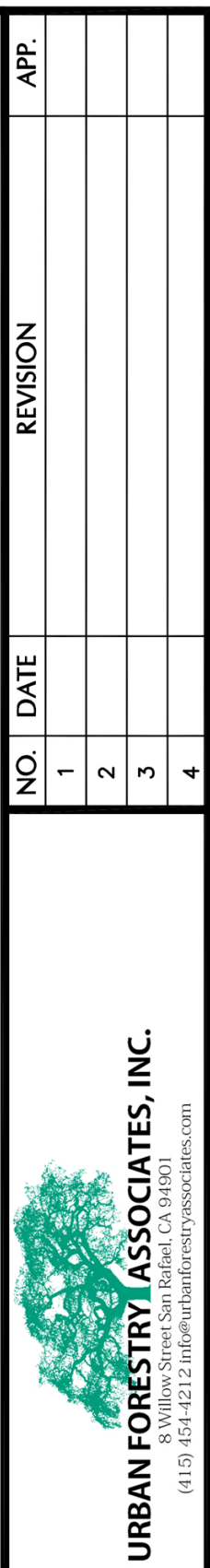
TREES NOT INCLUDED IN INVENTORY DUE TO DISTANCE FROM DEVELOPMENT, HOWEVER FENCING SHALL BE PROVIDED TO EXCLUDE CONSTRUCTION ACTIVITIES

Dashed red line indicates the minimum root zone area to be protected. This area can be protected by either excluding workers from the area using at least 4' high metal deer fencing or, if excluding is not practical, a combination of soil and trunk armoring may be used. If fencing is used, it shall be erected by the contractor prior to demolition and inspected by the Project Arborist. See below images for examples of trunk and soil armoring. Specifications for both can be found in the report that is to accompany this map.



10' 0 10' 20'
SCALE: 1"= 10'

APP.	NO.	DATE	REVISION	SHEET
	1			
	2			
	3			
	4			
FORESTRY PLAN - LOT 8				
MARINDA HEIGHTS SUBDIVISION				
APN: 001-150-12, 001-171-51, 001-251-31, 001-160-09				
CITY OF FAIRFAX				
OCTOBER 2017				
T-8				



URBAN FORESTRY ASSOCIATES, INC.
18100 22nd Street Suite 100, San Rafael, CA 94903
(415) 452-2222 or 415-452-2223

CALIFORNIA