

RESOLUTION NO. 15-__

**A RESOLUTION OF THE TOWN COUNCIL OF THE TOWN OF FAIRFAX
SUPPORTING PRIORITY CONSERVATION AREA (PCA) DESIGNATION FOR
THREE ZONES WITHIN THE TOWN OF FAIRFAX SPHERE OF INFLUENCE**

WHEREAS, in 2007 the Association of Bay Area Governments (ABAG) requested nominations from local governments and land conservation organizations for Priority Conservation Areas (PCA) pursuant to the "Focusing our Vision" multi-agency regional planning initiative; and

WHEREAS, in August 2007 the Town of Fairfax approved nomination of the "Central Marin Ridgeland" as a FOCUS PCA that was subsequently approved by ABAG; and

WHEREAS, on July 17, 2014 ABAG adopted a program update process as part of the broader "Plan Bay Area Implementation" effort, allowing applications for new and/or modified PCA's; and

WHEREAS, the ABAG PCA designation process is intended to provide a framework for directing future regional funding for the purpose of acquiring lands or acquiring conservation easements over lands which have been designated as PCA's because of significant natural resource, open space, urban greening and recreational values; and

WHEREAS, the Town of Fairfax desires to enhance the possibility of future regional funding for the acquisition of local land or of conservation easements over local land where that land has significant natural resource, open space, urban greening and recreational values, should the land become available for acquisition.

WHEREAS, the revised PCA program guidelines for new or modified PCA nominations recognize land with attributes in the categories of Natural Landscapes, Agricultural, Urban Greening and/or Regional Recreation; and

WHEREAS, the Fairfax Open Space Committee (FOSC) has determined that all three new and/or modified proposed PCA's within the Town of Fairfax "Sphere of Influence" meet the characteristics of Natural Landscape, Urban Greening and Regional Recreation needed for designation; and

WHEREAS, the designation of these lands as PCA's is consistent with goals contained in the Town of Fairfax 2010-2030 General Plan- Open Space Element;

NOW, THEREFORE, BE IT HEREBY RESOLVED that the Fairfax Town Council:

- 1) Endorses the following three Priority Conservation Areas, as listed below and described and mapped as attached:

Zone 1-Western Fairfax/Tamarancho/Cascade. This PCA area is generally located to the west of the developed areas of Fairfax and encompasses the undeveloped or under-developed and recreational lands within Zone 1.

Zone 2 - Southern Fairfax Meadow/San Anselmo. This PCA area is generally located to the south of Sir Francis Drake Boulevard and encompasses the undeveloped or under-developed and recreational lands within Zone 2.

Zone 3- Sleepy Hollow/Oak Manor/Wall/The Alameda/Red Hill. This PCA area is generally located to the north of Sir Francis Drake Boulevard and encompasses the undeveloped or under-developed and recreational lands within Zone 3.

- 2) Authorizes the Town Manager to do everything necessary and appropriate to submit a PCA application to ABAG and to accept the designation if granted by ABAG.

The foregoing Resolution was duly passed and adopted at a meeting of the Town Council of the Town of Fairfax held in said Town on the 6th day of May 2015, by the following vote, to wit:

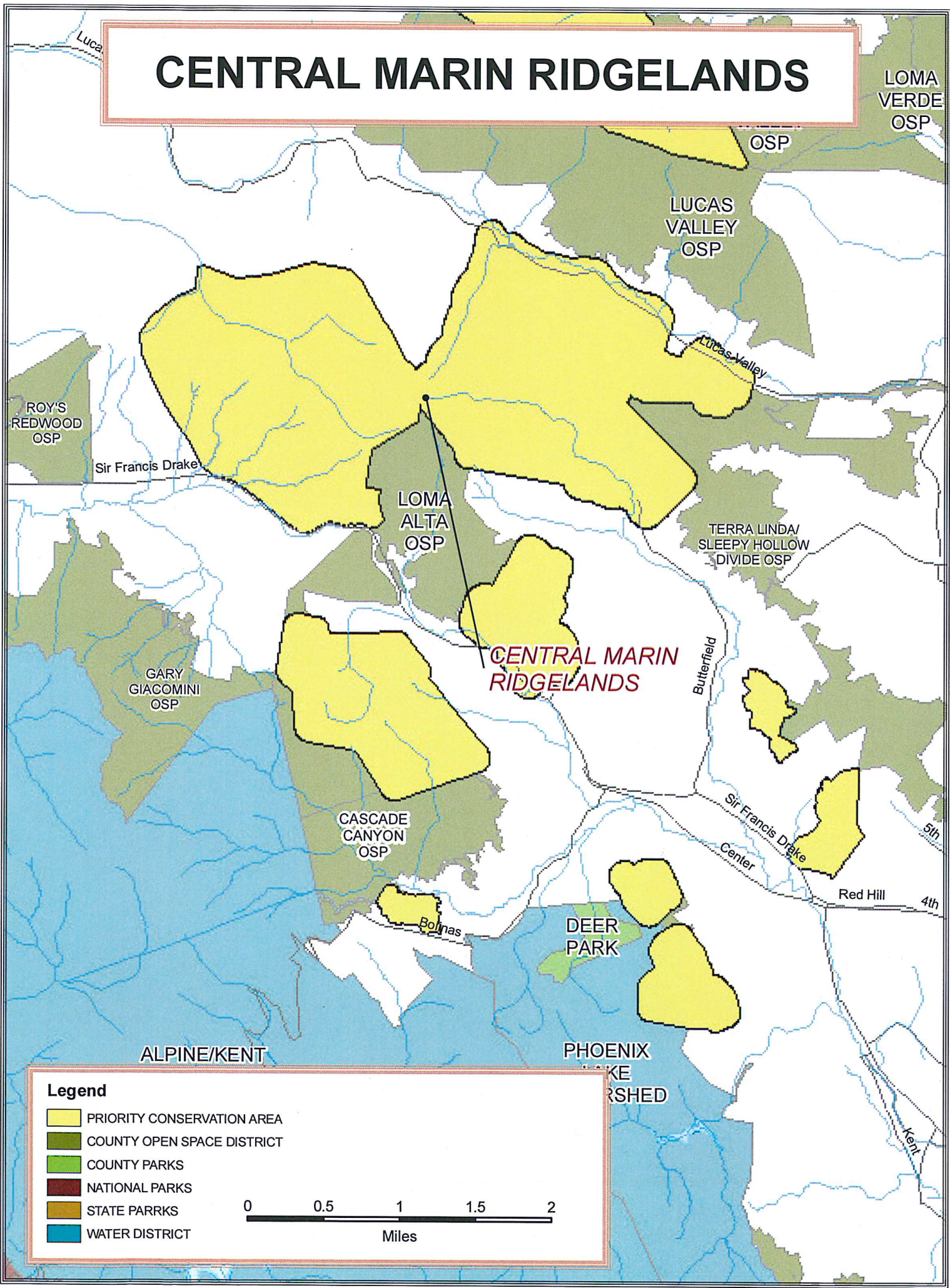
AYES:
NOES:
ABSENT:

Barbara Coler, Mayor

Attest

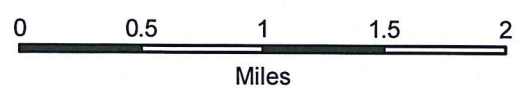
Michele Gardner, Town Clerk

CENTRAL MARIN RIDGELANDS



Legend

- PRIORITY CONSERVATION AREA
- COUNTY OPEN SPACE DISTRICT
- COUNTY PARKS
- NATIONAL PARKS
- STATE PARKS
- WATER DISTRICT



Proposed Fairfax Priority Conservation Areas 5/6/15

LOMA VERDE
OSP

OSP

LUCAS VALLEY
OSP

ROY'S
REDWOOD
OSP

Sir Francis Drake

LOMA
ALTA
OSP

TERRA LINDA/
SLEEPY HOLLOW
OSP

GARY
GACEMIN
OSP

CENTRAL MARIN
RIDGELANDS

Butterfield

CASCADE
CANYON
OSP

Sir Francis Drake

Red Hill

DEER
PARK

ALPINE/KENT

PHOENIX
KE
SHED

Legend

- PRIORITY CONSERVATION AREA
- COUNTY OPEN SPACE DISTRICT
- COUNTY PARKS
- NATIONAL PARKS
- STATE PARKS
- WATER DISTRICT

- ZONE 1
- ZONE 2
- ZONE 3

