

# TOWN OF FAIRFAX Zoning Map



TOWN OF FAIRFAX  
142 BOLINAS ROAD, FAIRFAX, CALIFORNIA 94930  
(415) 453-1584 / FAX (415) 453-1618

### ZONING DISTRICTS

#### COMMERCIAL ZONES

- CC - Central Commercial
- CH - Highway Commercial
- CL - Light Commercial
- CS - Service Commercial
- CR - Recreational Commercial

#### RESIDENTIAL ZONES

- RD - 5.5 - 7 - Residential
- RS - 6 - Single Family Residential
- RS - 7.5 - Single Family Residential
- RM - Multi-Family Residential
- PDD - Planned Development District
- UR - 7 - Upland Residential (7ac/du)
- UR - 10 - Upland Residential (10ac/du)

\*RS - 6 - zoning determined by arrowwood settlement agreement recorded 5/28/91

#### OPEN AREA ZONE

- O-A - Open Space

(Consult Fairfax Zoning Ordinance for detailed Zone descriptions)

#### OTHER

- Municipal Boundaries
- Fairfax Parcels Boundaries
- Creeks

#### Summary of Amendments

Date	Ordinance Number	Amendment Description
07/21/97	262	Repealed land use zoning, official zoning ordinance
2/9/95	452	Amend zoning to add Planned Development District
11/11/88	528	PDD zone for Sunset House (APN's 82348, 82349, 82, 83, 8231-84)
9/13/87	546	Repeal portion of Article 8.2 from RS 5.5 to RS - 6
8/19/86	541	Establish O-A Zone - Deer Park School
10/21/81	507	Repealed Upland Residential Zones UR-6 & UR-7
11/12/80	428	PDD process within Street Substitutions

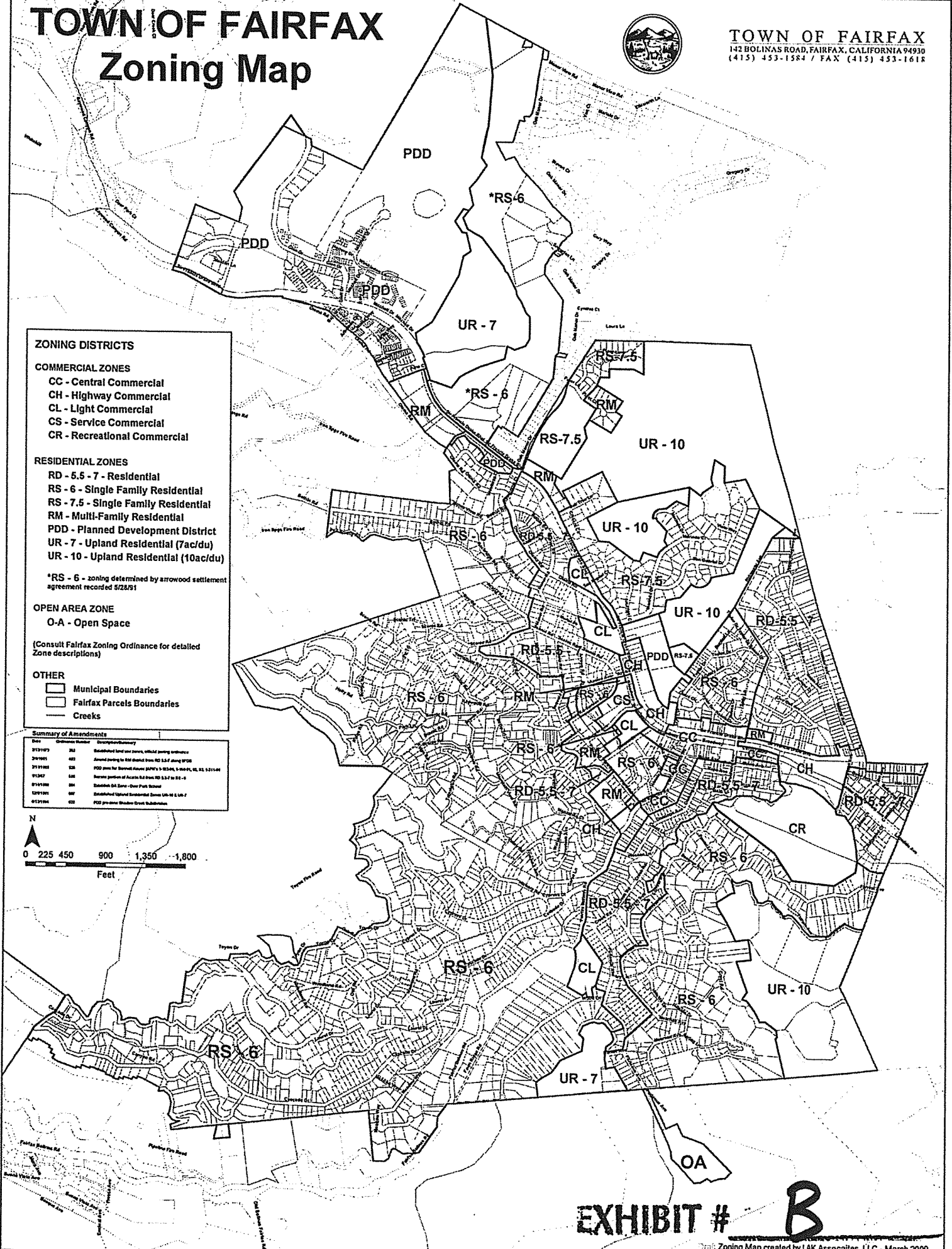
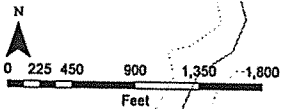


EXHIBIT # **B**

# TOWN OF FAIRFAX Zoning Map

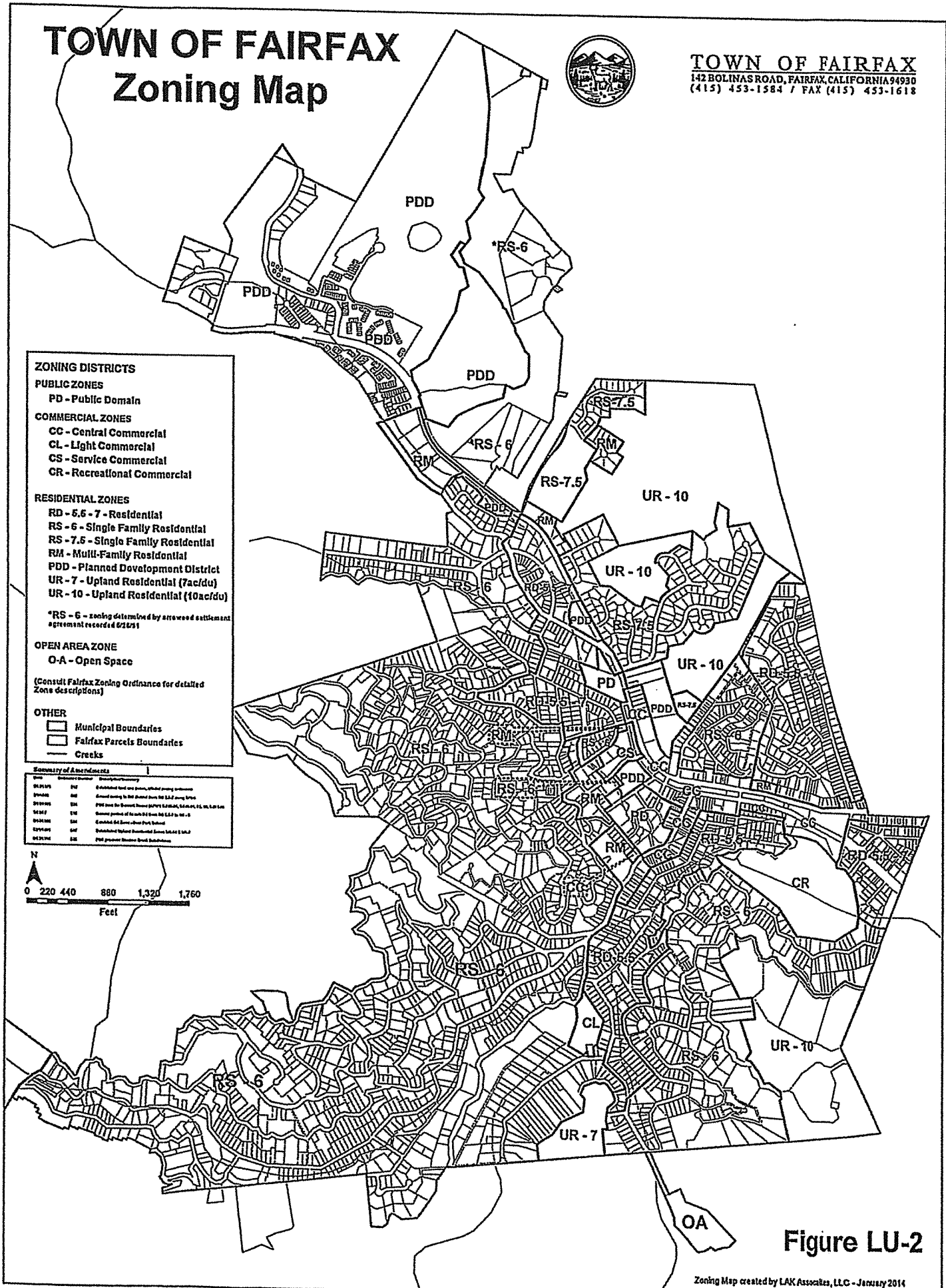
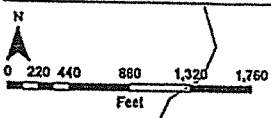


**TOWN OF FAIRFAX**  
142 BOLINAS ROAD, FAIRFAX, CALIFORNIA 94930  
(415) 453-1584 / FAX (415) 453-1618

- ZONING DISTRICTS**
- PUBLIC ZONES**  
PD - Public Domain
- COMMERCIAL ZONES**  
CC - Central Commercial  
CL - Light Commercial  
CS - Service Commercial  
CR - Recreational Commercial
- RESIDENTIAL ZONES**  
RD - 5.5 - 7 - Residential  
RS - 6 - Single Family Residential  
RS - 7.5 - Single Family Residential  
RM - Multi-Family Residential  
PDD - Planned Development District  
UR - 7 - Upland Residential (7ac/du)  
UR - 10 - Upland Residential (10ac/du)
- \*RS - 6 - zoning determined by approved settlement agreement recorded 6/26/01
- OPEN AREA ZONE**  
OA - Open Space
- (Consult Fairfax Zoning Ordinance for detailed Zone descriptions)
- OTHER**  
 Municipal Boundaries  
 Fairfax Parcels Boundaries  
 Creeks

**Summary of Amendments**

Date	Amendment	Description
04/15/05	007	Established text and format, added zoning categories
05/06/05	008	Added zoning to that shown from the L&L zoning map
05/09/05	009	PD zone for Sunset House (PDRS 1.2, 1.5, 1.8, 2.1, 2.4, 2.7, 3.0, 3.3, 3.6, 3.9, 4.2, 4.5, 4.8, 5.1, 5.4, 5.7, 6.0, 6.3, 6.6, 6.9, 7.2, 7.5, 7.8, 8.1, 8.4, 8.7, 9.0, 9.3, 9.6, 9.9, 10.2, 10.5, 10.8, 11.1, 11.4, 11.7, 12.0, 12.3, 12.6, 12.9, 13.2, 13.5, 13.8, 14.1, 14.4, 14.7, 15.0, 15.3, 15.6, 15.9, 16.2, 16.5, 16.8, 17.1, 17.4, 17.7, 18.0, 18.3, 18.6, 18.9, 19.2, 19.5, 19.8, 20.1, 20.4, 20.7, 21.0, 21.3, 21.6, 21.9, 22.2, 22.5, 22.8, 23.1, 23.4, 23.7, 24.0, 24.3, 24.6, 24.9, 25.2, 25.5, 25.8, 26.1, 26.4, 26.7, 27.0, 27.3, 27.6, 27.9, 28.2, 28.5, 28.8, 29.1, 29.4, 29.7, 30.0, 30.3, 30.6, 30.9, 31.2, 31.5, 31.8, 32.1, 32.4, 32.7, 33.0, 33.3, 33.6, 33.9, 34.2, 34.5, 34.8, 35.1, 35.4, 35.7, 36.0, 36.3, 36.6, 36.9, 37.2, 37.5, 37.8, 38.1, 38.4, 38.7, 39.0, 39.3, 39.6, 39.9, 40.2, 40.5, 40.8, 41.1, 41.4, 41.7, 42.0, 42.3, 42.6, 42.9, 43.2, 43.5, 43.8, 44.1, 44.4, 44.7, 45.0, 45.3, 45.6, 45.9, 46.2, 46.5, 46.8, 47.1, 47.4, 47.7, 48.0, 48.3, 48.6, 48.9, 49.2, 49.5, 49.8, 50.1, 50.4, 50.7, 51.0, 51.3, 51.6, 51.9, 52.2, 52.5, 52.8, 53.1, 53.4, 53.7, 54.0, 54.3, 54.6, 54.9, 55.2, 55.5, 55.8, 56.1, 56.4, 56.7, 57.0, 57.3, 57.6, 57.9, 58.2, 58.5, 58.8, 59.1, 59.4, 59.7, 60.0, 60.3, 60.6, 60.9, 61.2, 61.5, 61.8, 62.1, 62.4, 62.7, 63.0, 63.3, 63.6, 63.9, 64.2, 64.5, 64.8, 65.1, 65.4, 65.7, 66.0, 66.3, 66.6, 66.9, 67.2, 67.5, 67.8, 68.1, 68.4, 68.7, 69.0, 69.3, 69.6, 69.9, 70.2, 70.5, 70.8, 71.1, 71.4, 71.7, 72.0, 72.3, 72.6, 72.9, 73.2, 73.5, 73.8, 74.1, 74.4, 74.7, 75.0, 75.3, 75.6, 75.9, 76.2, 76.5, 76.8, 77.1, 77.4, 77.7, 78.0, 78.3, 78.6, 78.9, 79.2, 79.5, 79.8, 80.1, 80.4, 80.7, 81.0, 81.3, 81.6, 81.9, 82.2, 82.5, 82.8, 83.1, 83.4, 83.7, 84.0, 84.3, 84.6, 84.9, 85.2, 85.5, 85.8, 86.1, 86.4, 86.7, 87.0, 87.3, 87.6, 87.9, 88.2, 88.5, 88.8, 89.1, 89.4, 89.7, 90.0, 90.3, 90.6, 90.9, 91.2, 91.5, 91.8, 92.1, 92.4, 92.7, 93.0, 93.3, 93.6, 93.9, 94.2, 94.5, 94.8, 95.1, 95.4, 95.7, 96.0, 96.3, 96.6, 96.9, 97.2, 97.5, 97.8, 98.1, 98.4, 98.7, 99.0, 99.3, 99.6, 99.9



**Figure LU-2**

Zoning Map created by LAK Associates, LLC - January 2014