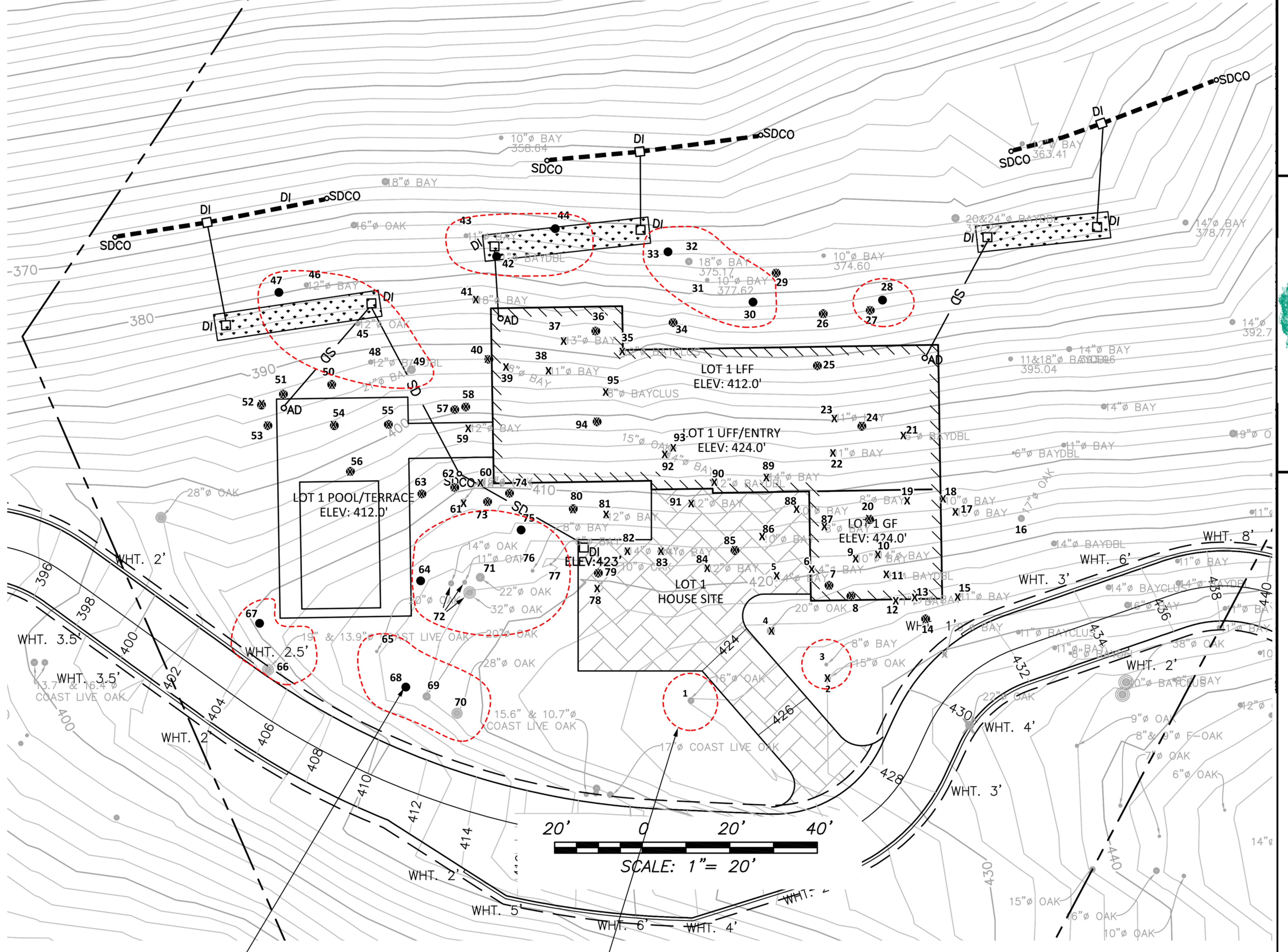


Number	Species	Diameter	Health	Structure	Comments	Heritage	Removal	Recommendations
1	Coast Live Oak	17.3	Poor	Poor	Advanced basal decay and sparse canopy.	Yes		Preserve with fencing.
2	Coast Live Oak	14.4	Poor	Poor to Fair	Apparent wood rat nest at base. Upper portion of canopy nearly dead.	Yes but exempt	X	
3	California Bay	7.9	Fair	Fair				
4	Coast Live Oak	20	Fair	Extremely Poor	Advanced decay and termite activity in base. Tree is nearly girdled. Highly unstable.	Yes but exempt	X	
5	California Bay	7.6 7.5 7.2	Fair	Fair		Yes	X	
6	California Bay	11	Fair	Poor to Fair	Diameter taken below fork. One spar failed and is suspended in an adjacent tree.			X
7	California Bay	7.8	Fair	Fair				X
8	California Bay	5.2 4.0	Fair	Fair				X
9	California Bay	7.9	Extremely Poor	Poor to Fair	Top half of tree is dead.			X
10	California Bay	13.2	Fair	Fair	Slight north canopy balance.			X
11	California Bay	7.2 6.5	Fair	Fair				X
12	California Bay	10.3	Fair	Fair				X
13	California Bay	7.9	Poor	Poor to Fair	One of two main spars is dead. Remaining spar is sparse.			X
14	California Bay	5.9 3.3	Fair	Poor to Fair	Two spars are crossing and grafting at 5' above grade.			X
15	California Bay	9.3	Extremely Poor	Extremely Poor	Half the tree previously failed leaving a compromised base. Canopy is nearly dead.			X
16	Coast Live Oak	15.8	Fair	Extremely Poor	Severely decayed base and large old failures in canopy. Tree leans to the east.	Yes		
17	California Bay	11.6	Fair	Fair to Good				X
18	California Bay	10.8	Fair	Fair to Good	Old wound in base. No apparent decay.			X
19	California Bay	10.1	Fair	Fair				X
20	California Bay	4.3	Fair	Fair	Second stem previously removed.			X
21	California Bay	9.4	Poor to Fair	Poor to Fair	Sweep in base. Large portions of the canopy are dead. Supporting old called trees.			X
22	California Bay	9.6	Poor to Fair	Fair	Scattered dieback in canopy.			X
23	California Bay	11.9	Fair	Fair				X
24	California Bay	4.7	Fair	Fair				X
25	California Bay	8.0	Poor to Fair	Fair	Downhill portion of canopy is dead.			X
26	California Bay	6	Poor to Fair	Poor to Fair	Large portion of canopy is dead.			X
27	California Bay	11.8	Fair	Fair to Good				X
28	California Bay	8.7	Fair	Fair				Preserve with fencing. No grading within 4' of the tree.
29	Coast Live Oak	16.16	Extremely Poor	Extremely Poor	Very nearly dead. Extensive decay throughout.	Yes but exempt	X	
30	California Bay	6.9	Fair	Fair	High canopy.			Preserve with fencing. No grading within 4' of the tree.
31	California Bay	9.5	Fair	Fair	Strong canopy balance north.			Preserve with fencing. No grading within 4' of the tree.
32	California Bay	14.4	Fair	Fair	Slight north lean.			Preserve with fencing. No grading within 4' of the tree.
33	California Bay	9.3	Extremely Poor	Poor to Fair	North lean. Upper canopy dead.			Preserve with fencing. No grading within 4' of the tree.
34	California Bay	6.4	Fair	Fair	Slight north lean.			X
35	California Bay	11.4 5.1 5.4	Poor	Poor to Fair	Much of the upper canopy is dead.	Yes but exempt	X	
36	California Bay	12	Poor to Fair	Fair	Dieback in upper canopy. Large decay cavity in canopy with associated nest.			X
37	California Bay	12.3	Fair	Fair				X
38	California Bay	8.5	Extremely Poor	Fair	Very sparse canopy with extensive dieback.			X
39	California Bay	6.7	Fair	Poor to Fair	Sweep in base. Canopy to the northwest.			X
40	California Bay	5.8	Fair	Fair	Slight northwest lean.			X
41	California Bay	16.3	Poor to Fair	Fair	North lean. Significant dieback in canopy.	Yes	X	
42	California Bay	6.7	Fair	Fair	One of two stems died and failed at 10'. Remaining spar is fair.			Preserve with fencing. No grading within 4' of the tree.
43	California Bay	10.1	Fair	Extremely Poor	Strong north lean and heavy erosion and decay in base.			Preserve with fencing. No grading within 4' of the tree.
44	California Bay	5.4	Fair	Fair	Low canopy. North lean.			Does not need to be removed to build the home but should be removed for fire risk mitigation. Does not need to be removed to build the home but should be removed for fire risk mitigation.
45	Coast Live Oak	10.6	Dead	Fair	Recently dead at time of inspection.			Preserve with fencing. No grading within 4' of the tree.
46	California Bay	10.3	Fair	Fair				Preserve with fencing. No grading within 4' of the tree.
47	California Bay	6.6	Fair	Fair	Trunk forks at grade. North canopy balance.	Yes		Preserve with fencing. No grading within 4' of the tree.
48	California Bay	5.9 9.4	Fair	Fair				Preserve with fencing. No grading within 6' of the tree.
49	California Bay	16.6 4.7	Fair	Fair	Second stem is small and could be a separate tree.	Yes		Preserve with fencing. No grading within 6' of the tree.
50	California Bay	7.1	Fair	Fair	West lean.			X
51	California Bay	7.9	Fair	Fair	North lean.			X
52	California Bay	5.5	Poor to Fair	Fair	Significant dieback in half of canopy.			X
53	California Bay	6.5 6.6 6.5	Fair	Fair	Forks at 1' above grade.			X
54	California Bay	5.4	Fair	Fair	West lean.			X
55	California Bay	8.9	Poor to Fair	Fair	Significant dieback.			X
56	California Bay	4.8	Fair	Fair	Slight south lean.			X
57	California Bay	7	Fair	Fair	Slight north lean.			X
58	California Bay	4.5	Fair	Fair				X
59	California Bay	10.3	Extremely Poor	Fair	Canopy mostly dead.			X
60	Black Oak	15.9	Fair	Fair	Decay and termites in base. Appears well compartmentalized. Lean and canopy balance to the north.	Yes	X	
61	Coast Live Oak	11.6	Fair	Poor	Second stem failed long ago. Several old failures along the main stem have associated decay. High canopy arches to the southwest.			X
62	California Bay	8.1	Fair	Fair	Canopy balance to the southwest.			X
63	California Bay	5.1	Fair	Fair	Southwest lean.			X
64	California Bay	5.3	Fair	Fair	Suppressed.			Does not need to be removed to build the home but should be removed for fire risk mitigation. Preserve with fencing. No grading within 4' of the tree.
65	Coast Live Oak	6.7	Fair	Fair	West lean			Pool deck will be approximately 10' from the tree base. Tree may require some significant pruning to allow for clearance. Preserve with fencing.
66	Coast Live Oak	13.6 12.5 11.6	Fair to Good	Fair	Wide, spreading, low canopy.	Yes		Preserve with fencing.
67	Coast live oak	9	Fair to Good	Fair to Good	Balanced canopy.	Yes		Preserve with fencing.
68	Coast live oak	4.9	Fair	Fair	Suppressed in group. Lean southwest.	Yes		Preserve with fencing.
69	Coast live oak	8.9 8.6	Fair	Fair	South stem extends over existing road.	Yes		Preserve with fencing.
70	Coast live oak	12.4 11.5	Fair to Good	Fair	Canopy extends over existing road.	Yes		Preserve with fencing.
71	Coast live oak	10 visual estimate	Fair	Fair	Canopy distribution southwest.	Yes		Preserve with fencing.
72	Coast live oak	17.7 13.3 10.7	Fair	Fair	Low hanging canopy with strong distribution south and south west.	Yes		Preserve with fencing.
73	California Bay	6.9	Fair	Fair	The canopy is distributed southwest.			X
74	California Bay	8.5	Poor to Fair	Fair	Moderate canopy dieback.			X
75	Coast live oak	11.7	Fair	Fair		Yes		X
76	California Bay	7.3	Fair	Fair	The canopy is distributed Southwest.			Preserve with fencing. No grading within 4' of the tree.
77	California Bay	6.1	Fair	Fair	Jog in main stem at 8' above grade. The canopy is distributed Southwest.			Preserve with fencing. No grading within 4' of the tree.
78	California Bay	8.6	Fair	Fair	The canopy is distributed south.			X
79	California Bay	8.3	Fair	Fair	Canopy distribution south.			X
80	California Bay	6.3 5.8	Poor to Fair	Fair	Moderate canopy dieback.			X
81	California Bay	11.2	Fair	Poor	A failed dead leader remains attached to the tree. The live canopy is distributed north.			X
82	California Bay	14	Fair	Fair				X
83	California Bay	13.2	Fair	Fair	The tree forks at 12' above grade.			X
84	California Bay	10.2	Fair	Fair				X
85	California Bay	4.7	Fair	Fair				X
86	California Bay	8.8	Poor to Fair	Fair	Moderate canopy dieback. Canopy distribution north.			X
87	California Bay	7.2	Fair	Fair				X
88	California Bay	9.6 3.2	Poor to Fair	Fair	Moderate canopy dieback.			X
89	California Bay	12	Fair	Fair				X
90	California Bay	10.0 8.4	Fair	Fair				X
91	California Bay	10.5	Poor to Fair	Fair	The canopy is sparsely foliated.			X
92	California Bay	10.4	Poor to Fair	Fair	Significant canopy dieback.			X
93	Coast live oak	14.7	Fair	Fair	Canopy distribution north. Decay cavity at 8' on main trunk.			X
94	California Bay	11.1	Poor	Fair	Significant canopy dieback. Upright form.			X
95	California Bay	9.5 8.2 4.9	Poor to Fair	Poor to Fair	Canopy distribution north. Moderate canopy dieback.	Yes	X	



Trees shown with solid black dots were not located by the surveyor and so their locations on this map are approximate.

At least 4' high metal deer fence. Specifically not the orange plastic fencing found on most construction sites. Should be installed in such a manner that it can remain until landscape installation. If the location shown will not work with planned construction, it should be brought to the attention of the Arborist.