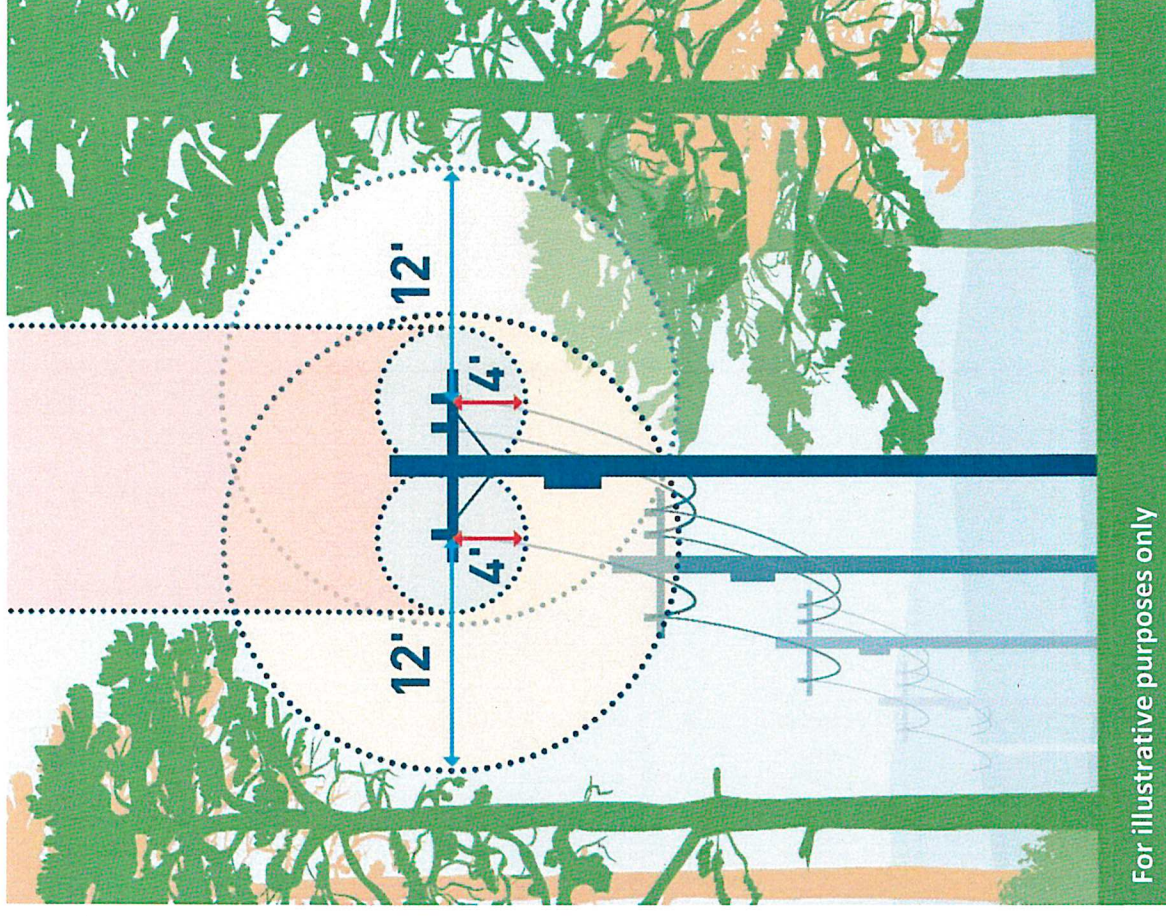


Enhanced Vegetation Management

We are **expanding and enhancing our Vegetation Management program** to further reduce wildfire risk

- Our enhanced vegetation management work includes the following:
 - ✔ **Meeting state standards** for minimum clearances around the power line
 - ✔ **Addressing overhanging limbs and branches** directly above and around the lines
 - ✔ **Removing hazardous vegetation** such as **dead or dying trees** that pose a potential risk to the lines
 - ✔ **Evaluating the condition of trees that may need to be addressed** if they are tall enough to strike the lines
- We are working to complete this important safety work in **high fire-threat areas** over the next several years



For illustrative purposes only