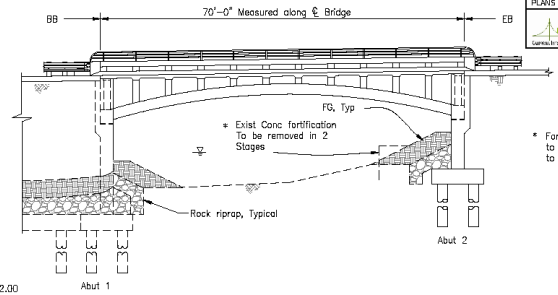
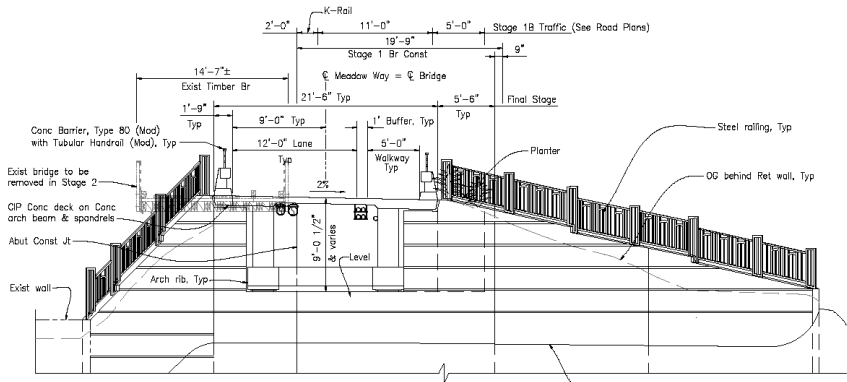
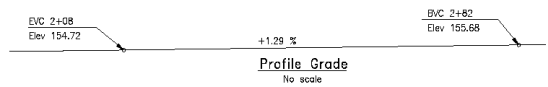


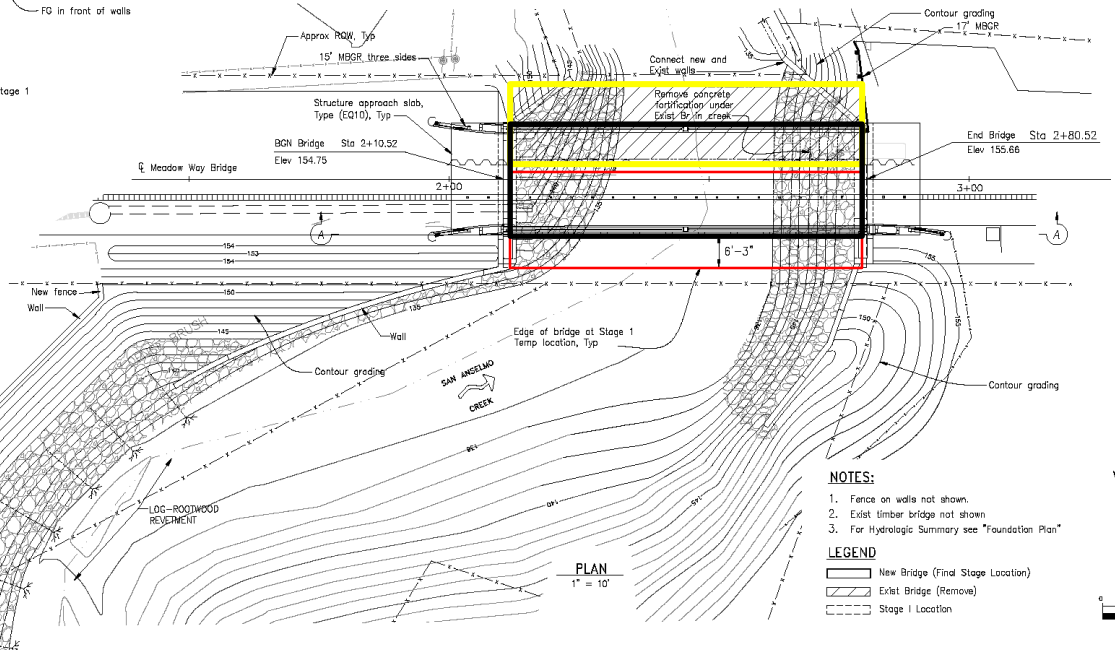
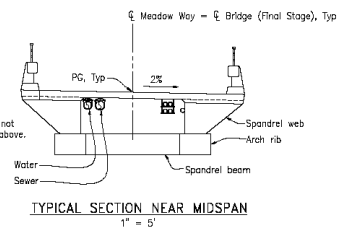


DIST	COUNTY	ROUTE	POST MILES TOTAL PROJECT	SHEET NO.	TOTAL SHEETS
04	Minn				

REGISTERED CIVIL ENGINEER	
PLANS APPROVAL DATE	



- TYPICAL SECTION (@ ABUT 2)**
1" = 5'
- NOTES**
- Arch ribs may be PC or CIP Conc.
 - Superstructure to be cast over new abutments 6'-3" further south in Stage 1 and moved over for the final position in Stage 2.



- NOTES:**
- Fence on walls not shown.
 - Exist timber bridge not shown.
 - For Hydrologic Summary see "Foundation Plan"
- LEGEND**
- New Bridge (Final Stage Location)
 - - - - - Exist Bridge (Remove)
 - □ □ □ Stage 1 Location

DESIGN	BY D. Vang	CHECKED	LOAD & RESISTANCE FACTOR DESIGN	LIVE LOADING: HL93 AND PERMIT DESIGN VEHICLE	BY N. Tamannaie	CHECKED	PREPARED FOR THE TOWN OF FAIRFAX DEPARTMENT OF PUBLIC WORKS	PROJECT NUMBER	Nader Tamannaie, PE	BRIDGE No.	27C-000B	MEADOW WAY BRIDGE OVER SAN ANSELMO CREEK
DETAILS	BY J. Carvalho	CHECKED	LAYOUT	SPECIFICATIONS	BY	PLANS AND SPECS COMPARED		POST MILE	---			GENERAL PLAN
QUANTITIES		CHECKED										

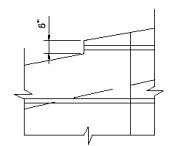
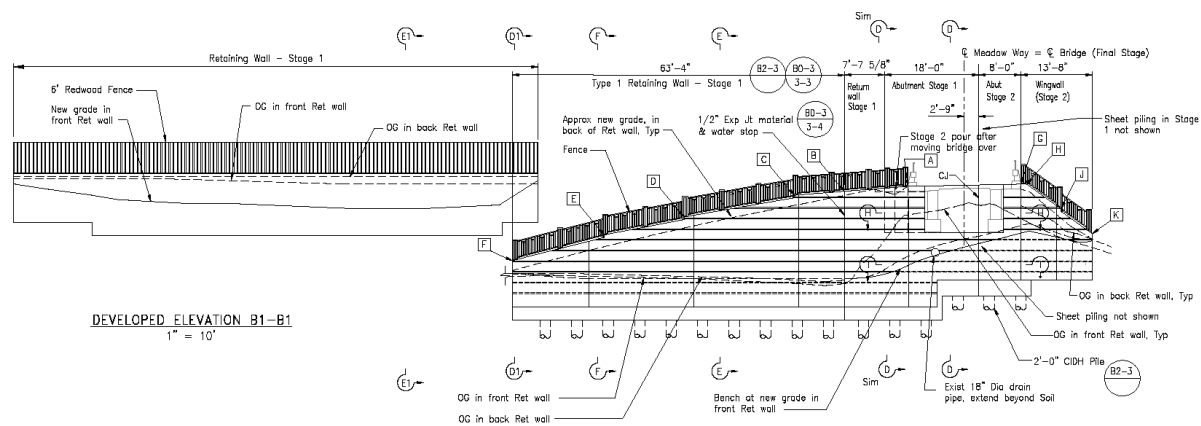
DIST	COUNTY	ROUTE	POST MILES TOTAL PROJECT	SHEET NO.	TOTAL SHEETS
04	Mm				

REGISTERED CIVIL ENGINEER

PLANS APPROVAL DATE

NO. 5788
EX. 6/20/20
CIVIL ENGINEER
STATE OF CALIFORNIA

850 ALHAMBRA BLVD., SUITE 220
SACRAMENTO, CA 95816



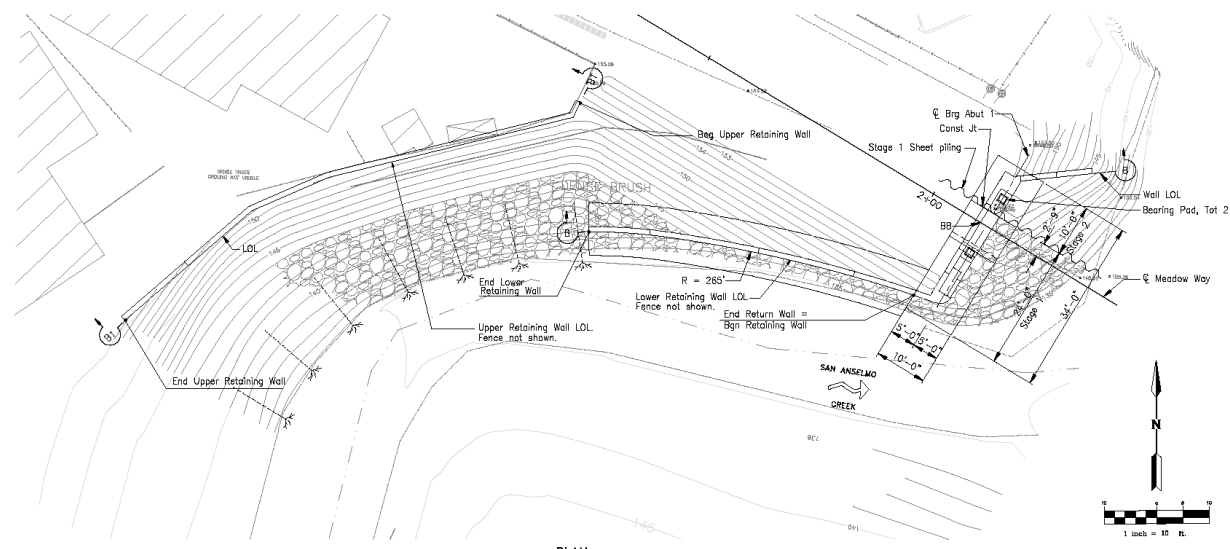
RETAINING WALL STEP DETAIL
1/2" = 1'-0"

Notes:
Fence not shown for clarity.

Point	Elev (ft)	Dist along LOL from point A (ft)
A	154.54	0
B	153.60	7'-7-3/8"

Point	Elev (ft)	Dist along LOL from point B (ft)
B	153.60	0
C	152.85	9'-8"
D	148.67	30'-6"
E	145.30	45'-9"
F	140.36	63'-4"

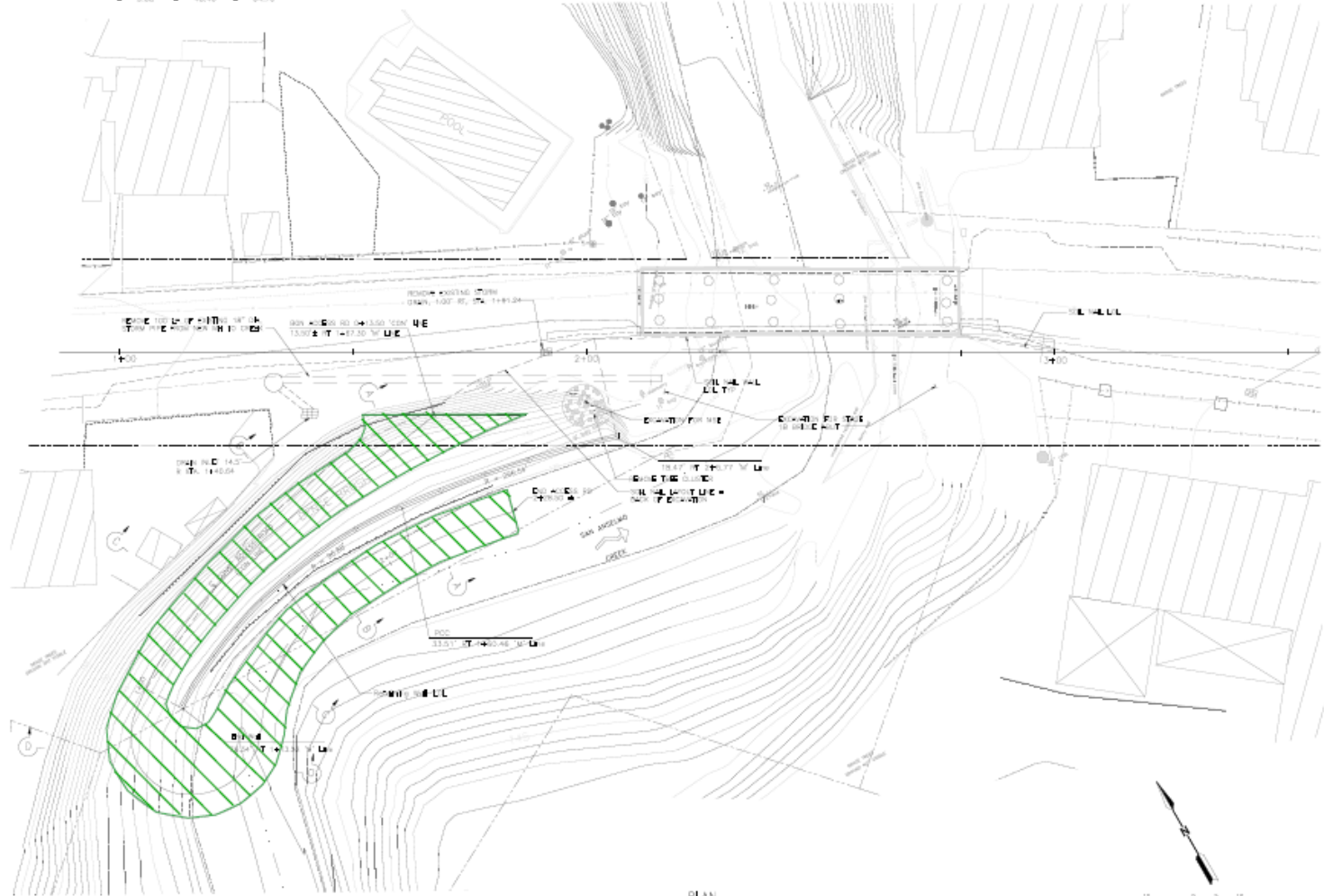
Point	Elev (ft)	Dist along LOL from point F (ft)
G	154.96	0
H	154.96	1'-2"
J	150.30	7'-8"
K	145.52	13'-8"



PLAN
1" = 10'

DESIGN BY N. Tamannaie	CHECKED	PREPARED FOR THE TOWN OF FAIRFAX DEPARTMENT OF PUBLIC WORKS	BRIDGE No. 27C-0008	MEADOW WAY BRIDGE OVER SAN ANSELMO CREEK
DETAILS BY J. Carvalho	CHECKED	Nader Tamannaie, PE	POST MILE	
QUANTITIES BY	CHECKED			ABUT 1 LAYOUT
DATE 06 DSD 21.38 (CADD 4/99)		ORIGINAL SCALE IN INCHES FOR REDUCED PLANS	CU EA	DISREGARD PRINTS BEARING EARLIER REVISION DATES
			CONTRACT NO.	REVISION DATES (PRELIMINARY STAGE ONLY)
				SHEET 6 OF 6

STAIL LAYOUT					
R = 2.25'	R = 156.54'	R = 55.85'			
A = 18.11°	A = 12.42°	A = 48.33°			
T = 14.57'	T = 4.19'	T = 11.79'			
L = 1.08'	L = 18.40'	L = 14.79'			



- LEGEND:**
- APPROX SOIL WALL LAYOUT
 - APPROX ROW
 - TEMP RAIN DRAINAGE (SEE CONSTRUCTION)

- STAGE 1A CONSTRUCTION**
1. CONTINUE USING THE EXISTING BRIDGE
 2. EXCAVATE AND INSTALL SOIL WALLS AT BOTH SIDES TO AND FROM TEMP CONSTRUCTION ADJACENT ROAD EXCAVATION
 3. CONSTRUCT SOUTHWEST RETAINING WALL ON THE WEST SIDE OF THE BRIDGE (SEE STAGE 1A)
 4. PLACE ROAD LANE PROTECTION (RSP)

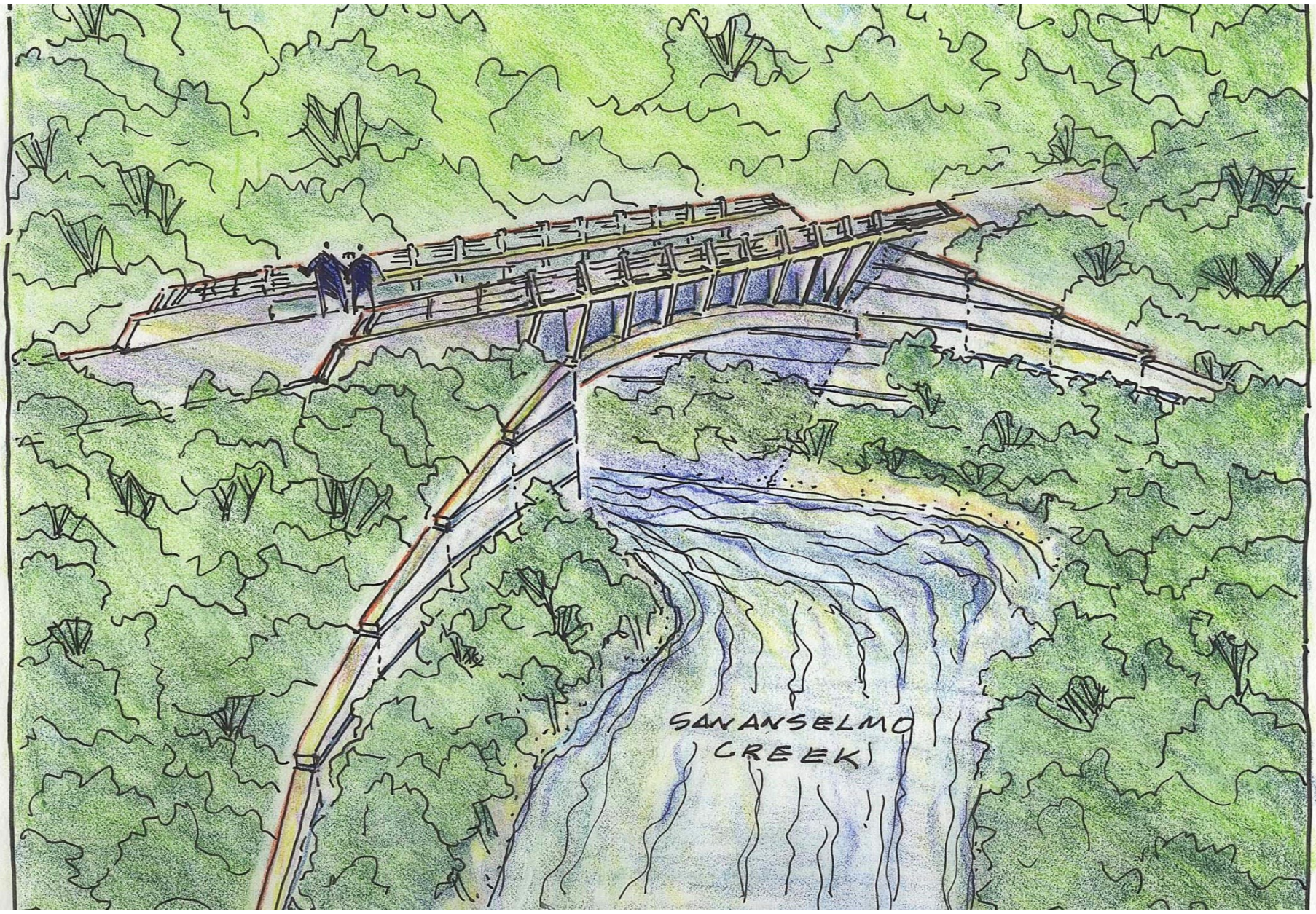
PLAN
1" = 10'



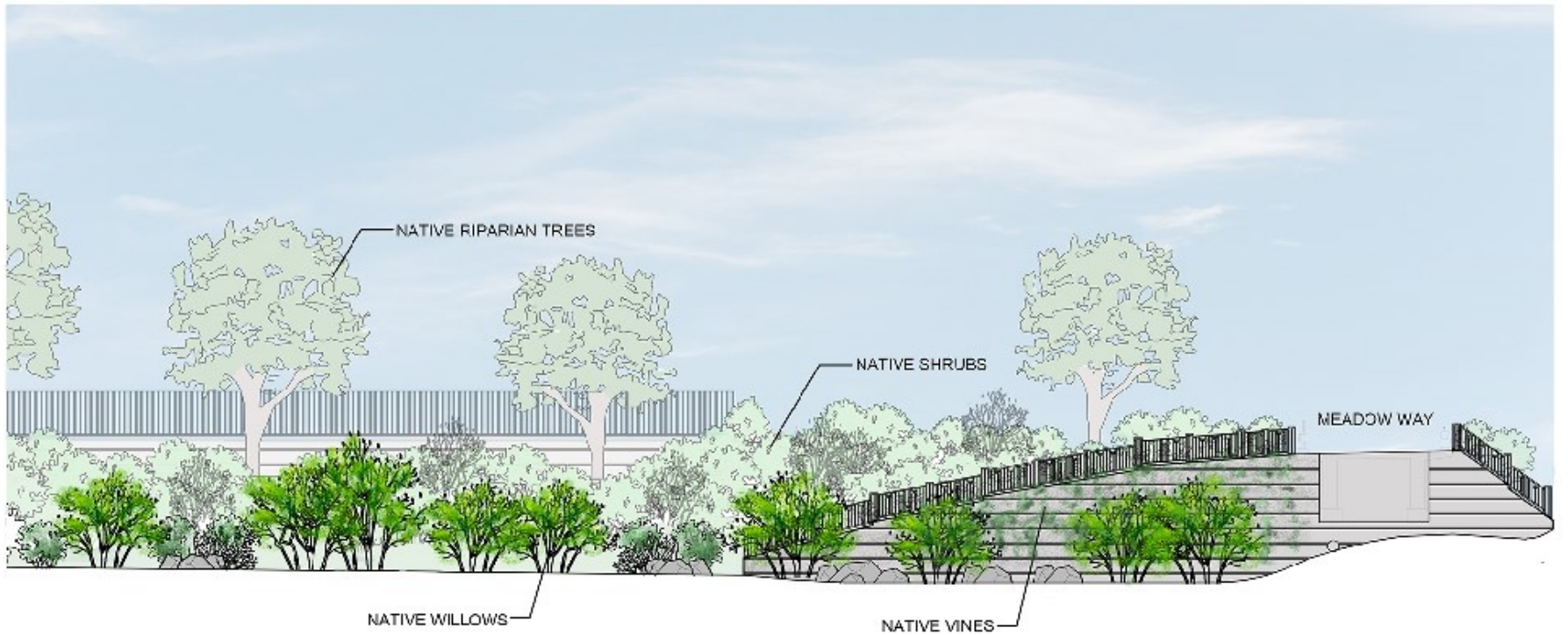
NO.	DESCRIPTION	BY	CHK	DATE
1				
2				
3				
4				
5				

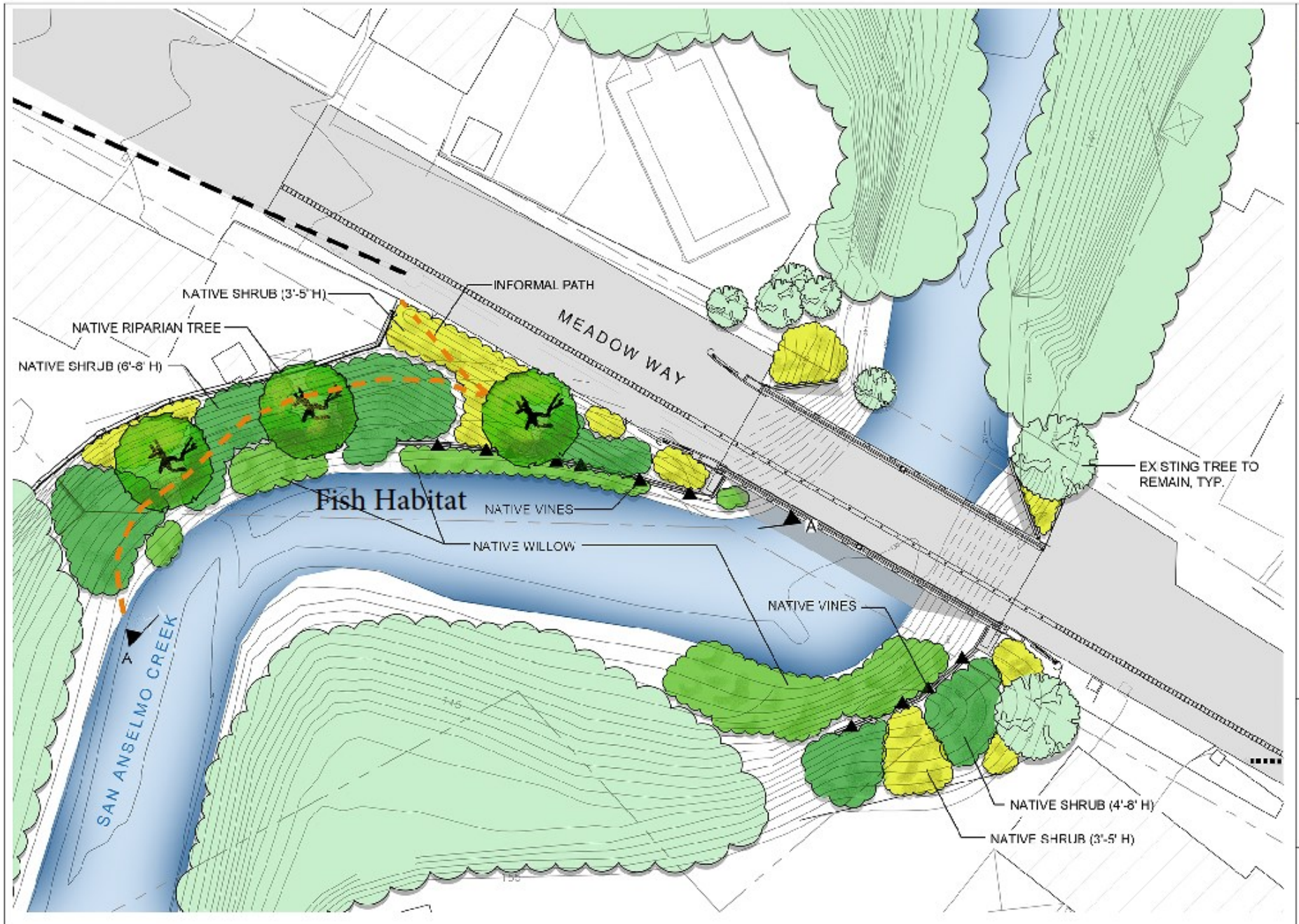


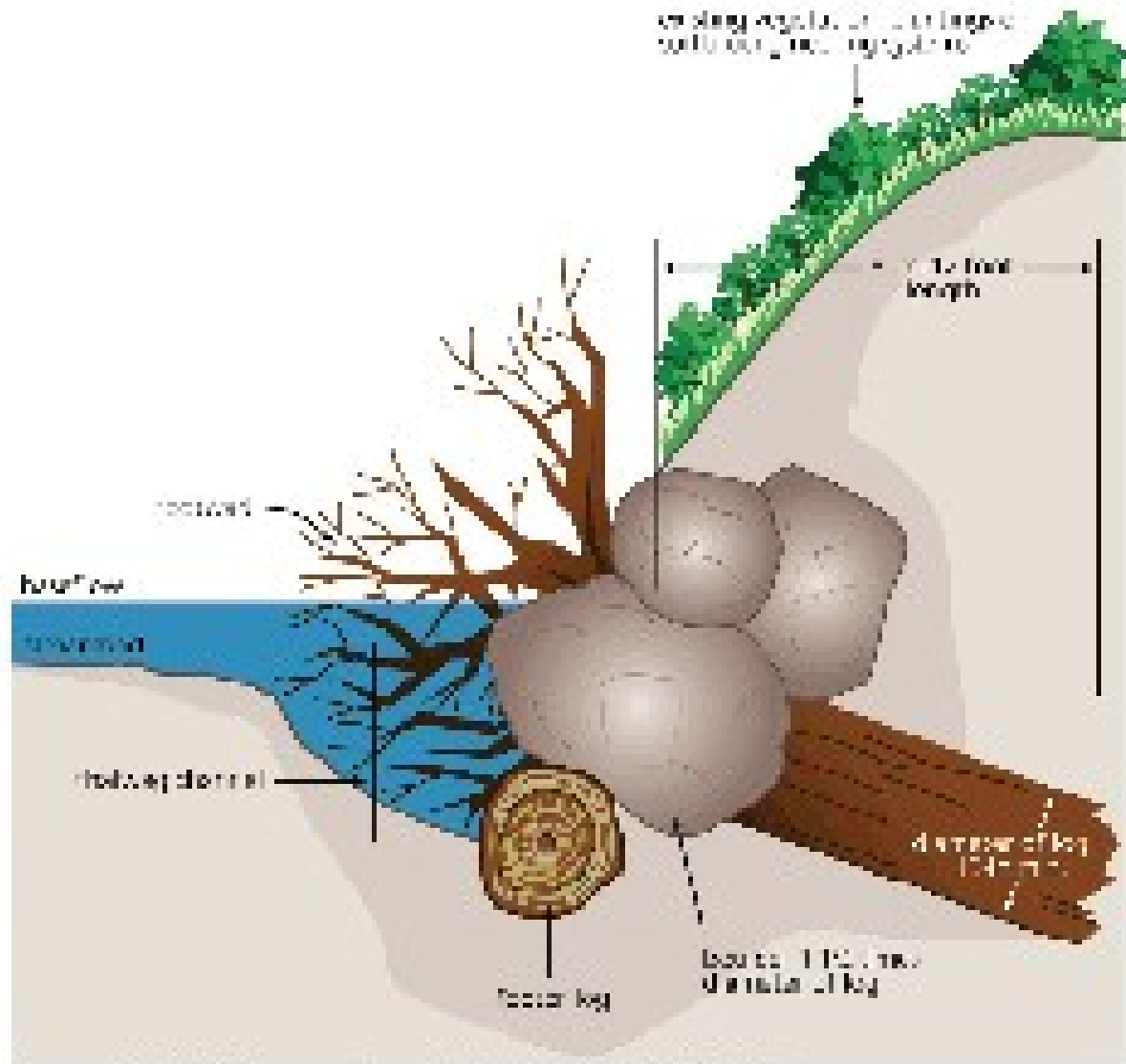
MEADOW WAY BRIDGE		SHEET NO.
CONSTRUCTION DETAILS - STAGE 1A		1



SAN ANSELMO
CREEK







Source: © James H. Brinkley, *Engineering Wood*, vol. 1, p. 16, 2005, p. 16.

