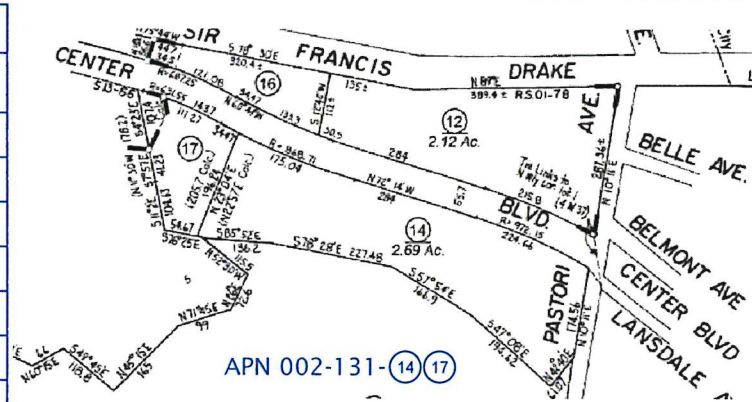


LIGHTING FIXTURE SCHEDULE									
TOTAL FIXTURE COUNT	TYPE	MANUFACTURER	MODEL	MODEL NUMBER	MOUNTING HEIGHT	MOUNTING ACCESSORY	BUG RATING	MOUNTING	TOTAL WATTAGE
8	BQ1	CREE	CPY	CPY250-B-DM-F-C-UL-WH-40K	10' AFG		B2-U2-G1	SURFACE CANOPY MOUNT	248 W
3	BQ2	CREE	CPY	CPY250-B-DM-F-C-UL-WH-40K	12' - 9" AFG		B2-U2-G1	SURFACE CANOPY MOUNT	93 W
2	UU1	CREE	AREA EDGE	ARE-EDG-4M-AA-04-E-UL-BZ-525-40K	10 - 9" AFG	WM-DM-BZ	B2-U0-G2	WALL MOUNT	140 W
13	YA1	CREE	—	OUT OF SCOPE, EXISTING	—	—	—	RECESSED CANOPY MOUNT	0 W
2	YB1	CREE	—	OUT OF SCOPE, EXISTING	—	—	—	POLE MOUNT	0 W
7	YH1	CREE	—	OUT OF SCOPE, EXISTING	—	—	—	FLOOD	0 W
1	YI1	CREE	—	OUT OF SCOPE, EXISTING	—	—	—	POLE MOUNT	0 W
2	YK1	CREE	—	OUT OF SCOPE, EXISTING	—	—	—	WALL MOUNT	0 W

** REFER TO CUT SHEETS



KEYNOTES - NEW WORK

- ① EXISTING SIDEWALK TO REMAIN.
- ② EXISTING ROAD SIDE PARALLEL PARKING TO REMAIN.
- ③ EXISTING TREES & PLANTERS TO REMAIN.
- ④ EXISTING BIKE RACKS TO REMAIN.
- ⑤ EXISTING ACCESSIBLE PARKING TO REMAIN.
- ⑥ EXISTING DRIVE AISLE TO REMAIN.
- ⑦ EXISTING PARKING TO REMAIN.
- ⑧ EXISTING BUILDING TO REMAIN.
- ⑨ EXISTING MONUMENT SIGNAGE TO REMAIN. PROTECT IN PLACE.
- ⑩ EXISTING LIGHT POSTS TO REMAIN. PROTECT IN PLACE.
- ⑪ EXISTING LIGHT FIXTURES TO REMAIN

DATE	ISSUED FOR	REV
04.08.22	PLANNING REVIEW	

NORR Associates inc. and the undersigned licensed professionals do not represent that these plans and specifications are suitable for any other client and/or site other than the one denoted. NORR Associates Inc. and the undersigned licensed professional disclaims responsibility for these plans and specifications if they are used in whole or in part by another client or at any other site.

This drawing is not final or to be used for construction until signed by the licensed professionals.

All drawings and written material associated with this project constitute the original and unpublished work of NORR Associates Inc. and the same may not be duplicated, used or disclosed without the written consent of NORR Associates Inc.

Seal

NORR
 NORR Associates Inc.
 An Ingenium Group Company
 1631 Alhambra Blvd, Suite 100
 Sacramento, California, 95816 USA
 (916) 930-0210
 www.norr.com

Project Manager
R. DEUTSCH

Project Leader
J. ELLIOTT

Checked
J. ELLIOTT

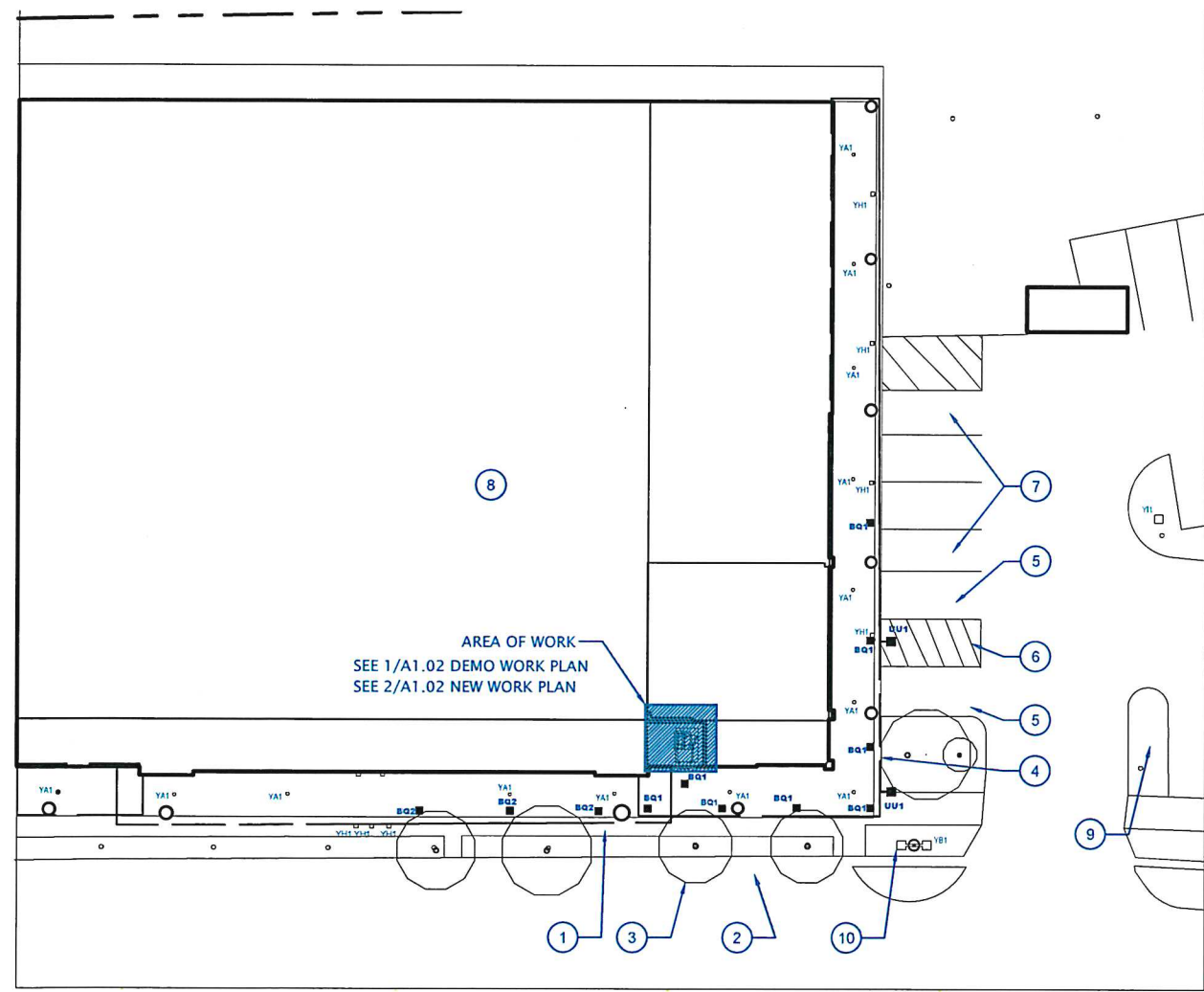
DRAWN
G. ESTRADA

Client
BANK OF AMERICA
 JLL
 2000 CLAYTON ROAD
 CONCORD CA 94520
 CONTACT: KEVIN SILKWOOD
 M +1 206-507-1822
 Kevin.Silkwood@am.jll.com

Project
**BANK OF AMERICA
 FAIRAX | ATM**
 769-B Center Blvd.
 Fairfax, CA 94930

Drawing Title
DEMO/NEW ENLARGED PLANS

Project No. JCSR21-0263-00 Drawing No. A1.02



1 ENLARGED SITE PLAN WITH EXTERIOR LIGHTING
 SCALE: 1/36" = 1'-0"
 North



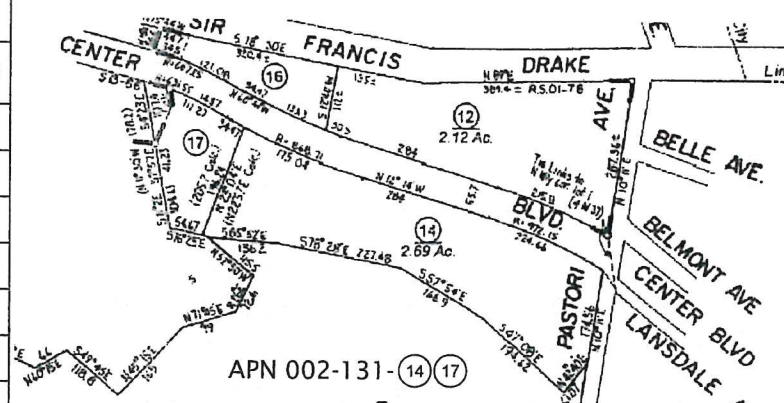
2 OVERALL SITE PLAN
 SCALE: N.T.S.
 North

LIGHTING FIXTURE SCHEDULE

TOTAL FIXTURE COUNT	TYPE	MANUFACTURER	MODEL	MODEL NUMBER	MOUNTING HEIGHT	MOUNTING ACCESSORY	BUG RATING	MOUNTING	TOTAL WATTAGE
8	BQ1	CREE	CPY	CPY250-B-DM-F-C-UL-WH-40K	10' AFG		B2-U2-G1	SURFACE CANOPY MOUNT	248 W
3	BQ2	CREE	CPY	CPY250-B-DM-F-C-UL-WH-40K	12' - 9" AFG		B2-U2-G1	SURFACE CANOPY MOUNT	93 W
2	UU1	CREE	AREA EDGE	ARE-EDG-4M-AA-04-E-UL-BZ-525-40K	10' - 9" AFG	WM-DM-BZ	B2-U0-G2	WALL MOUNT	140 W
13	YA1	CREE	—	OUT OF SCOPE	—	—	—	RECESSED CANOPY MOUNT	0 W
2	YB1	CREE	—	OUT OF SCOPE	—	—	—	POLE MOUNT	0 W
7	YH1	CREE	—	OUT OF SCOPE	—	—	—	FLOOD	0 W
1	YI1	CREE	—	OUT OF SCOPE	—	—	—	POLE MOUNT	0 W
2	YK1	CREE	—	OUT OF SCOPE	—	—	—	WALL MOUNT	0 W

** REFER TO CUT SHEETS

= 11 SURFACE CANOPY MOUNT LIGHTS
 = 2 WALL MOUNT LIGHTS



KEYNOTES - NEW WORK

- 1 EXISTING SIDEWALK TO REMAIN.
- 2 EXISTING ROAD SIDE PARALLEL PARKING TO REMAIN.
- 3 EXISTING THREES & PLANTERS TO REMAIN.
- 4 EXISTING BIKE RACKS TO REMAIN.
- 5 EXISTING ACCESSIBLE PARKING TO REMAIN.
- 6 EXISTING DRIVE AISLE TO REMAIN.
- 7 EXISTING PARKING TO REMAIN.
- 8 EXISTING BUILDING TO REMAIN.
- 9 EXISTING MONUMENT SIGNAGE TO REMAIN. PROTECT IN PLACE.
- 10 EXISTING LIGHT POSTS TO REMAIN. PROTECT IN PLACE.
- 11 EXISTING LIGHT FIXTURES TO REMAIN

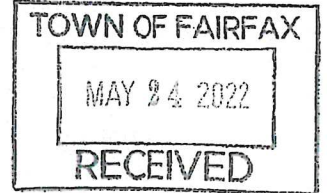
DATE	ISSUED FOR	REV
04.08.22	PLANNING REVIEW	

NORR Associates Inc. and the undersigned licensed professionals do not represent that these plans and specifications are suitable for any other client and/or site other than the one denoted. NORR Associates Inc. and the undersigned licensed professional disclaims responsibility for these plans and specifications if they are used in whole or in part by another client or at any other site.

This drawing is not final or to be used for construction until signed by the licensed professionals.

All drawings and written material associated with this project constitute the original and unpublished work of NORR Associates Inc. and the same may not be duplicated, used or disclosed without the written consent of NORR Associates Inc.

Seal



NORR
 NORR Associates Inc.
 An Ingenium Group Company
 1631 Alhambra Blvd, Suite 100
 Sacramento, California, 95816 USA
 (916) 930-0210
 www.norr.com

Project Manager
R. DEUTSCH

Project Leader
J. ELLIOTT

Checked
J. ELLIOTT

DRAWN
G. ESTRADA

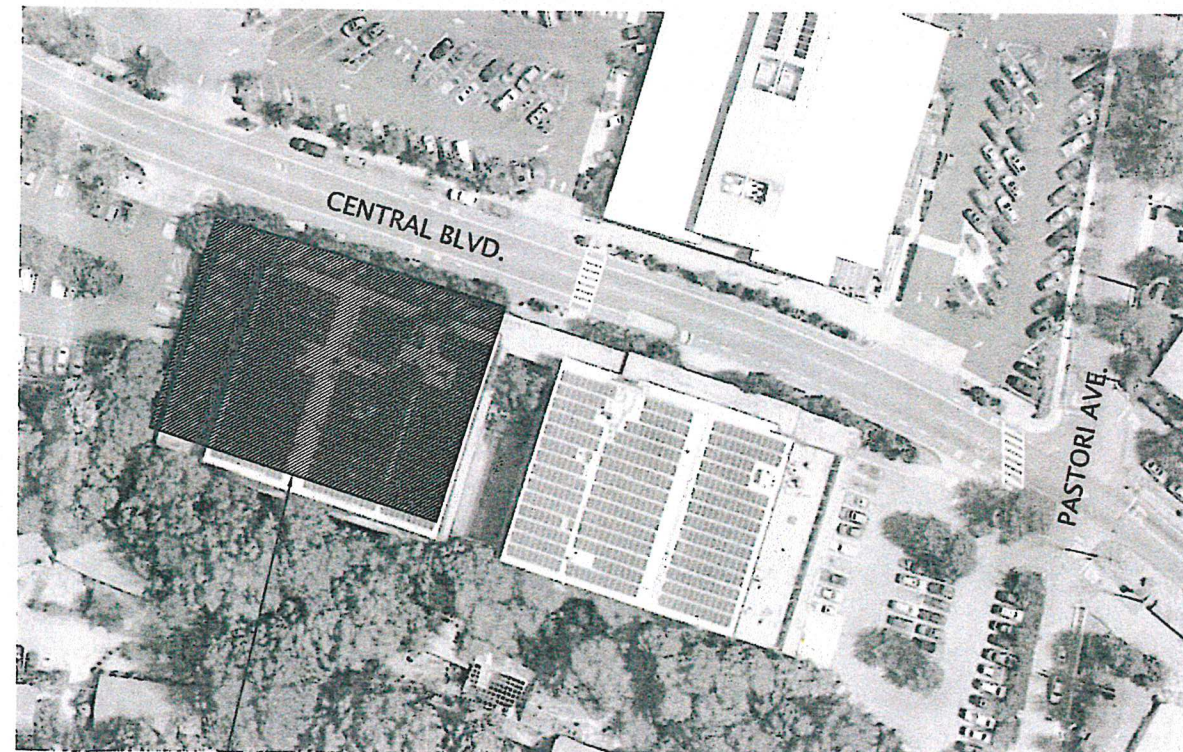
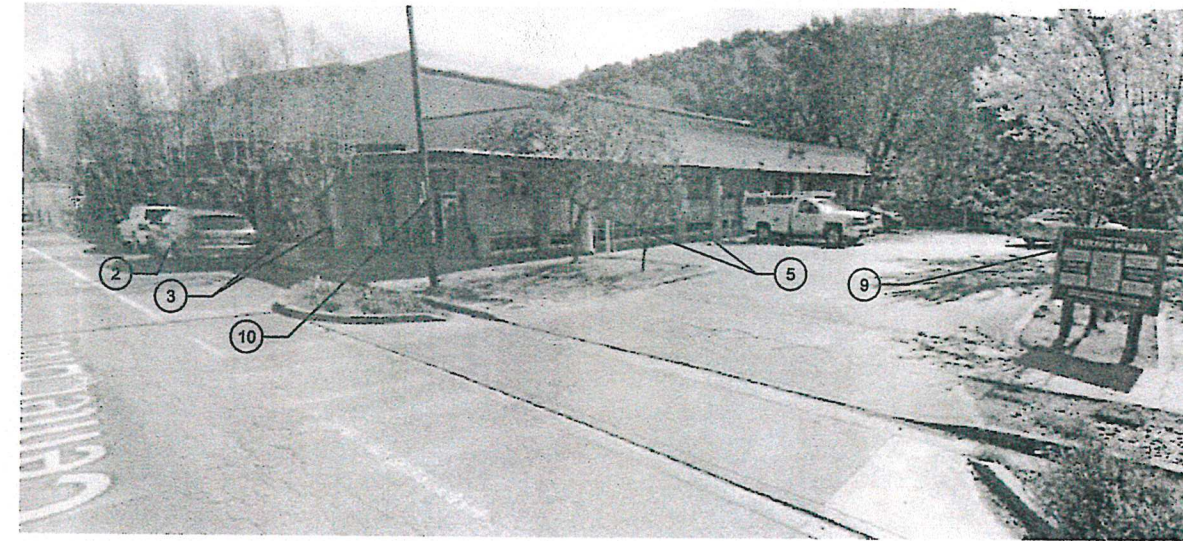
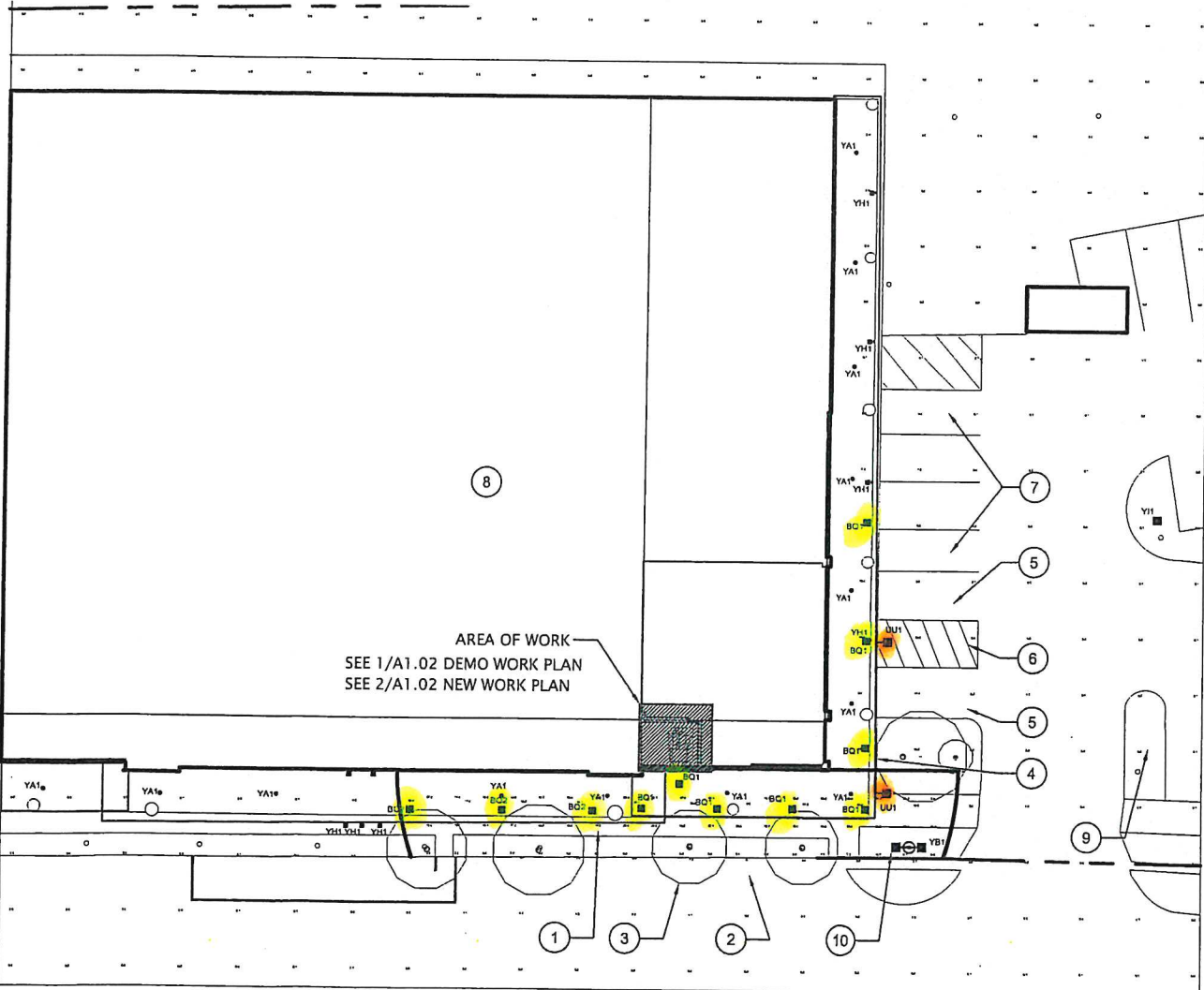
Client
BANK OF AMERICA
 JLL
 2000 CLAYTON ROAD
 CONCORD CA 94520
 CONTACT: KEVIN SILKWOOD
 M +1 206-507-1822
 Kevin.Silkwood@am.jll.com

Project
**BANK OF AMERICA
 FAIRAX | ATM
 769-B Center Blvd.
 Fairfax, CA 94930**

Drawing Title
DEMO/NEW ENLARGED PLANS

Project No.
JCSR21-0263-00

Drawing No.
A1.02



ENLARGED SITE PLAN
2
 OVERALL SITE PLAN
 SCALE: N.T.S.

1
 ENLARGED SITE PLAN WITH EXTERIOR LIGHTING
 SCALE: 1/36" = 1'-0"



GENERAL NOTES

1. THE CONTRACTOR SHALL CONFORM TO LOCAL, STATE AND FEDERAL CODES, RULES AND REGULATIONS AND ORDINANCES FOR PROTECTION OF WORKERS, THE PUBLIC, PROPERTY, AND PROVIDE, INSTALL AND MAINTAIN BARRICADES, WARNING DEVICES AND OTHER PROTECTION WHERE REQUIRED THEREFORE.
2. THE CONTRACTOR SHALL PROVIDE ALL PERMITS, TRASH CHUTES AND DUMPSTERS AS REQUIRED. PERFORM DEMOLITION AND CLEAN UP TO ENSURE MINIMUM INTERFERENCE WITH ROADS, STREETS, WALKS, AND OTHER ADJACENT OCCUPIED OR USED FACILITIES.
3. OBTAIN AND FOLLOW ALL LOCAL JURISDICTION AIR QUALITY PROCEDURES DURING DEMOLITION.
4. NOTIFY ARCHITECT AND OWNER IF DEMOLITION UNCOVERS UNFORESEEN CONDITIONS SUCH AS BUT NOT LIMITED TO STRUCTURAL INSTABILITY, DRYROT, MOLD, WATER DAMAGE AND LEAKS, AND CODE VIOLATIONS.
5. COMPLETELY PROTECT EXISTING BUILDING, ADJACENT BUILDINGS AND OFF-SITE BUILDINGS AND PROPERTY AT ALL TIMES FROM DUST, DIRT, MOISTURE AND DEMOLITION OPERATIONS RESULTING FROM THIS WORK. PROMPTLY REPAIR DAMAGES CAUSED BY THE WORK TO SATISFACTION OF ARCHITECT AT NO ADDITIONAL COST TO OWNER.
6. ENSURE SAFE PASSAGE OF PERSONS AROUND AREA OF DEMOLITION. CONDUCT OPERATIONS TO PREVENT INJURY TO ADJACENT BUILDINGS, STRUCTURES, OTHER FACILITIES, AND PERSONS. ERECT TEMPORARY COVERED PASSAGEWAYS AS REQUIRED.
7. THE CONTRACTOR SHALL ASSUME COMPLETE RESPONSIBILITY FOR MAINTAINING ALL NECESSARY SERVICES TO REMAINING ADJACENT BUILDINGS OR PORTIONS OF BUILDINGS NOT BEING REMODELED.
8. EXISTING UTILITIES: PROTECT ACTIVE UTILITY LINES THAT ARE TO REMAIN. REPAIR OR REPLACE ANY SUCH UTILITIES DAMAGED BY THIS WORK AT NO ADDITIONAL COST TO OWNER
10. FIELD VERIFY EXTENT OF DEMOLITION NEAR BUILDING SHOWN TO REMAIN. PROVIDE ALL DEMOLITION AS REQUIRED TO ACCOMMODATE NEW CONSTRUCTION.
11. REMOVE FROM SITE, DEMOLISHED MATERIALS, DEBRIS, RUBBISH AND OTHER MATERIALS RESULTING FROM THE DEMOLITION OPERATION AND LEGALLY DISPOSE OFF OF SITE.

KEYNOTES - DEMOLITION WORK

- (A) EXISTING STOREFRONT WINDOW TO BE REMOVED IN ITS ENTIRETY. PREPARE EXISTING WALL OPENING AS REQUIRED TO HOUSE NEW DOOR AND SIDELIGHT PER NEW WORK.
- (B) REMOVE PORTION OF EXISTING WALL FOR NEW THRU WALL ATM.
- (C) EXISTING INTERIOR CMU WALL TO REMAIN.
- (D) EXISTING OPEN AREA TO REMAIN.
- (E) EXISTING SIDE WALK TO REMAIN. NO WORK - TYPICAL.

KEYNOTES - NEW WORK

- (1) PROVIDE NEW ACM ANODIZED SIDELIGHT STOREFRONT WINDOW ASSEMBLY TO MATCH EXISTING ADJACENT STOREFRONT ENTRY. SEE ELEVATION.
- (2) PROVIDE NEW ANODIZED DOOR. SEE ELEVATION.
- (3) BANK VENDOR TO PROVIDE NEW THRU WALL ATM MODEL (NCR 6684 TTW) WITH SURROUND FRAME FROM APPROVED VENDOR. SEE ELEVATION.
- (4) PROPOSED PARTITION WALL.
- (5) PROPOSED PARTITION TO BACKSIDE OF EXISTING CMU WALL TO PROVIDE UTILITY CHASE TO AVOID SHEER WALL PENETRATIONS
- (6) ELECTRICAL AND CONDENSATE LINES TO BE ROUTED- G.C. TO VERIFY EXACT PATHWAY.
- (7) PROPOSED NEW ATM ROOM.
- (8) EXISTING OPEN AREA TO REMAIN.
- (9) EXISTING CMU WALL TO REMAIN.

DATE	ISSUED FOR	REV
04.08.22	PLANNING REVIEW	

NORR Associates Inc. and the undersigning licensed professionals do not represent that these plans and specifications are suitable for any other client and/or site other than the one denoted. NORR Associates Inc. and the undersigning licensed professional disclaims responsibility for these plans and specifications if they are used in whole or in part by another client or at any other site.

This drawing is not final or to be used for construction until signed by the licensed professionals.

All drawings and written material associated with this project constitute the original and unpublished work of NORR Associates Inc. and the same may not be duplicated, used or disclosed without the written consent of NORR Associates Inc.

Seal

NORR

NORR Associates Inc.
An Ingenium Group Company
1631 Alhambra Blvd, Suite 100
Sacramento, California, 95816 USA
(916) 930-0210
www.norr.com

Project Manager
R. DEUTSCH

Project Leader
J. ELLIOTT

Checked
J. ELLIOTT

DRAWN
G. ESTRADA

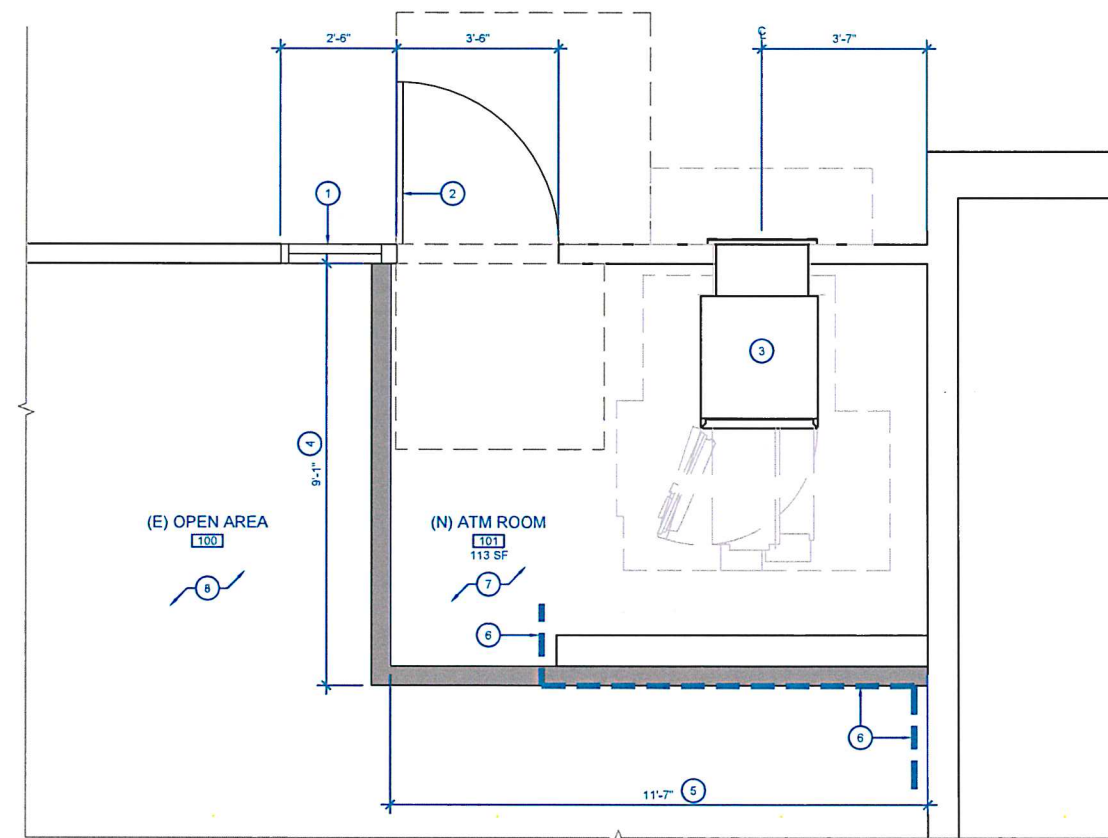
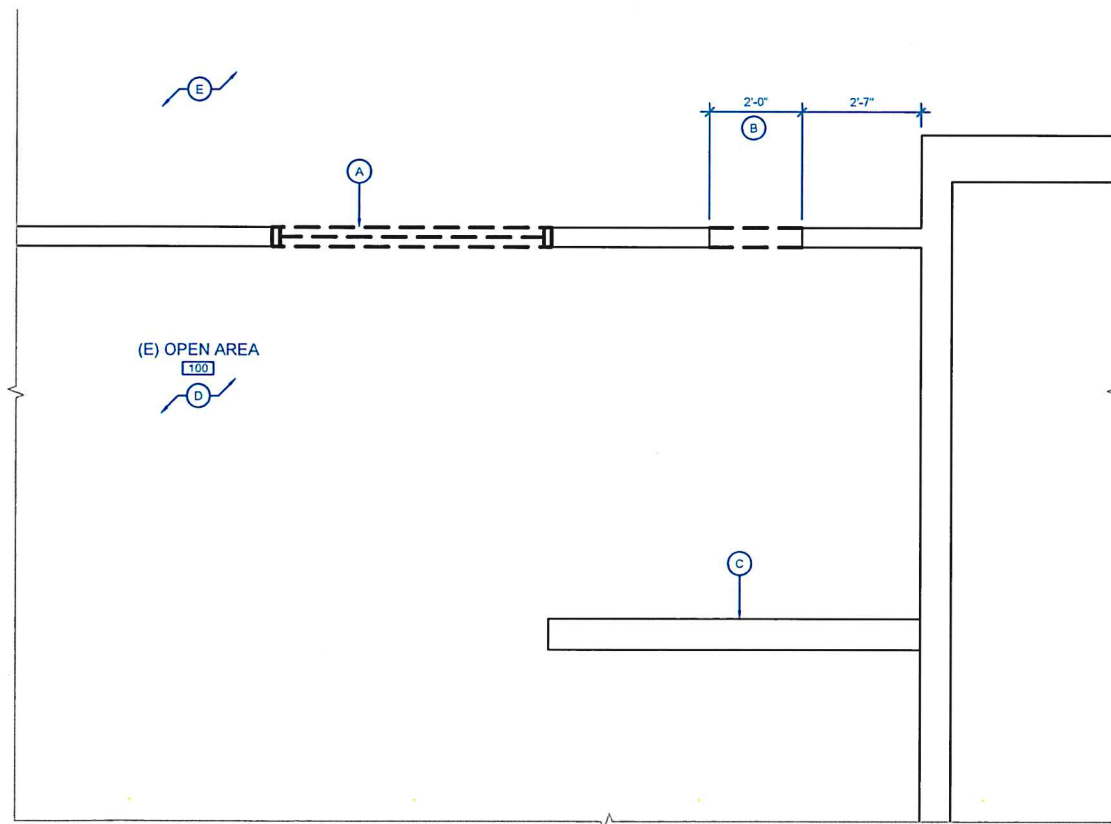
Client
BANK OF AMERICA
JLL
2000 CLAYTON ROAD
CONCORD CA 94520
CONTACT: KEVIN SILKWOOD
M +1 206-507-1822
Kevin.Silkwood@am.jll.com

Project
**BANK OF AMERICA
FAIRAX | ATM**
769-B Center Blvd.
Fairfax, CA 94930

Drawing Title
DEMO/NEW ENLARGED PLANS

Project No.
JCSR21-0263-00

Drawing No.
A1.02



1 DEMOLITION WORK - ENLARGED PLAN
SCALE: 1/4" = 1'-0"



2 NEW WORK - ENLARGED PLAN
SCALE: 1/4" = 1'-0"

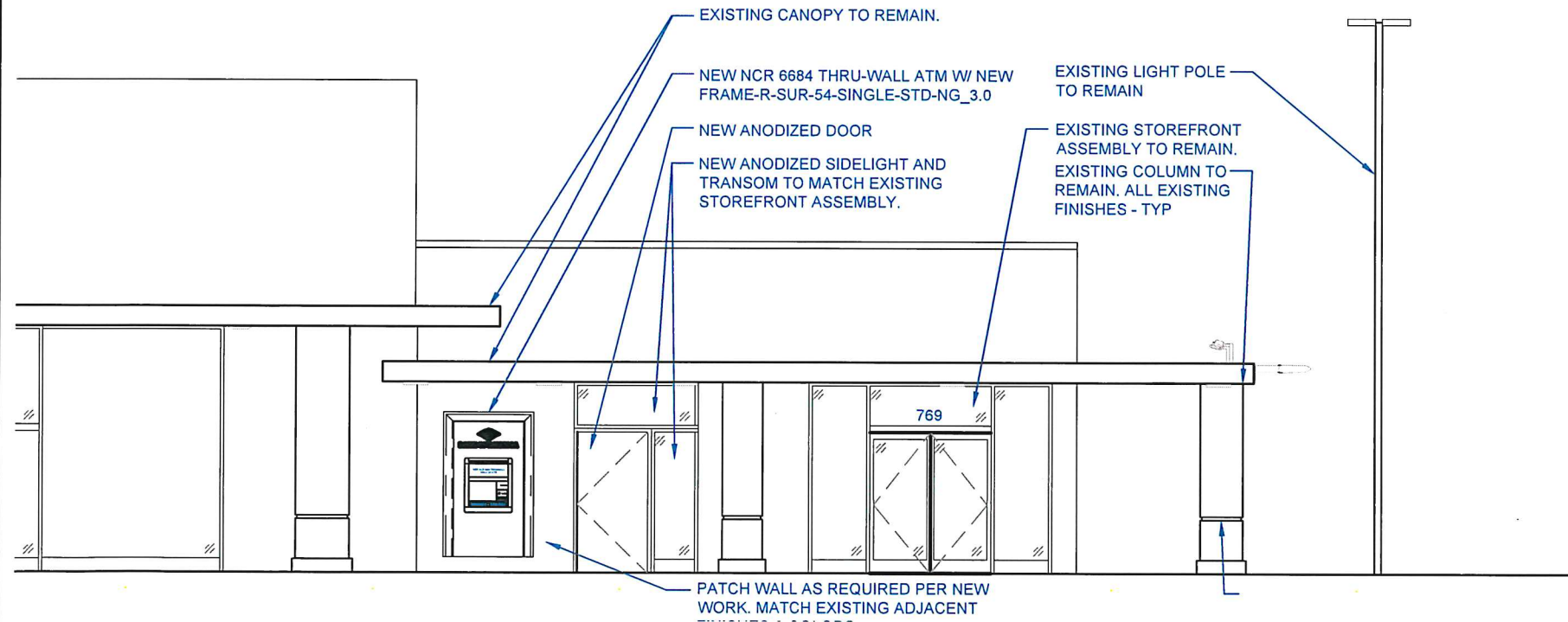




- EXISTING TREES TO REMAIN.
- EXISTING LIGHT POLE TO REMAIN
- EXISTING CANOPY TO REMAIN - TYP
- EXISTING STOREFRONT ASSEMBLY TO REMAIN
- EXISTING COLUMN TO REMAIN - TYP

- PORTION OF WALL TO BE DEMO FOR NEW ATM OPENING
- STOREFRONT WINDOW TO BE REMOVED

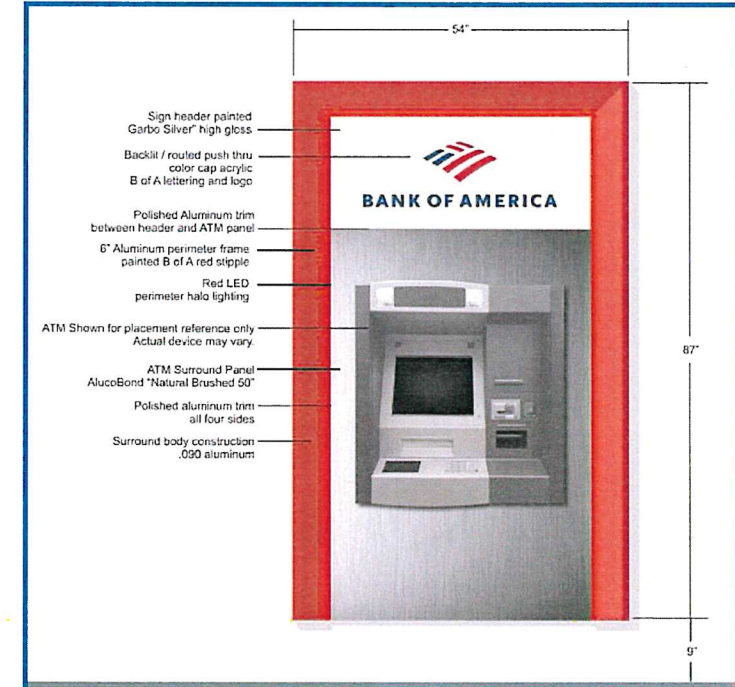
2 EXISTING ELEVATION
SCALE: N.T.S.



- EXISTING CANOPY TO REMAIN.
- NEW NCR 6684 THRU-WALL ATM W/ NEW FRAME-R-SUR-54-SINGLE-STD-NG_3.0
- NEW ANODIZED DOOR
- NEW ANODIZED SIDELIGHT AND TRANSOM TO MATCH EXISTING STOREFRONT ASSEMBLY.
- EXISTING LIGHT POLE TO REMAIN
- EXISTING STOREFRONT ASSEMBLY TO REMAIN. EXISTING COLUMN TO REMAIN. ALL EXISTING FINISHES - TYP
- PATCH WALL AS REQUIRED PER NEW WORK. MATCH EXISTING ADJACENT

1 NEW ELEVATION
SCALE: 1/8" = 1'-0"

PROPOSED ATM SURROUND



- Sign header painted Garbo Silver high gloss.
- Backfill / routed push thru color cap acrylic B of A lettering and logo
- Polished Aluminum trim between header and ATM panel
- 6" Aluminum perimeter frame painted B of A red stipple
- Red LED perimeter halo lighting
- ATM Shown for placement reference only. Actual device may vary.
- ATM Surround Panel AluceBond "Natural Brushed 50"
- Polished aluminum trim all four sides
- Surround body construction .020 aluminum

DATE	ISSUED FOR	REV
04.08.22	PLANNING REVIEW	

NORR Associates Inc. and the undersigning licensed professionals do not represent that these plans and specifications are suitable for any other client and/or site other than the one denoted. NORR Associates Inc. and the undersigning licensed professional disclaims responsibility for these plans and specifications if they are used in whole or in part by another client or at any other site.

This drawing is not final or to be used for construction until signed by the licensed professionals.

All drawings and written material associated with this project constitute the original and unpublished work of NORR Associates Inc. and the same may not be duplicated, used or disclosed without the written consent of NORR Associates Inc.

Seal

NORR
 NORR Associates Inc.
 An Ingenium Group Company
 1631 Alhambra Blvd, Suite 100
 Sacramento, California, 95816 USA
 (916) 930-0210
 www.norr.com

Project Manager
R. DEUTSCH

Project Leader
J. ELLIOTT

Checked
J. ELLIOTT

DRAWN
G. ESTRADA

Client
BANK OF AMERICA
 JLL
 2000 CLAYTON ROAD
 CONCORD CA 94520
 CONTACT: KEVIN SILKWOOD
 M +1 206-507-1822
 Kevin.Silkwood@am.jll.com

Project
**BANK OF AMERICA
 FAIRAX | ATM
 769-B Center Blvd.
 Fairfax, CA 94930**

Drawing Title
ELEVATIONS

Project No. JCSR21-0263-00	Drawing No. A1.03
-------------------------------	----------------------

LIGHT TYPES

DATE	ISSUED FOR	REV
04.08.22	PLANNING REVIEW	

CPY Series - Version B TYPE BQ

CPY250[®] LED Canopy/Soffit Luminaire

CPY250-B-DM-F-C-UL-WH-40K

Rev. Date: V17 11/18/2020

Product Description

The CPY250[®] LED Canopy/Soffit Luminaire has an extremely thin profile constructed of rugged cast aluminum. It can be surface mounted easily from below the canopy deck and can be pendant mounted. Direct imaging of the LEDs is eliminated with a highly efficient patterned flat or 0.91" [23mm] drop glass lens.

Applications: Petroleum canopies, CNG fueling stations, soffits

Performance Summary

Assembled in the U.S.A. of U.S. and imported parts
Initial Delivered Lumens: Up to 20,080
Efficacy: Up to 151 LPW
CRI: Minimum 70 CRI
CCT: 3000K (+/- 300K), 4000K (+/- 300K), 5700K (+/- 500K)
Limited Warranty: 10 years on luminaire/10 years on Colorfast DeltaGuard [®] finish
IP66 Rated [Direct Mount only]
Class 1, Division 2 Hazardous Location for select models

* See <http://creelighting.com/warranty> for warranty terms.

Accessories

Field-Installed	
Direct Mount Luminaires Canopy Upgrade Kits (18 ga. steel, except where noted) CPY-AP304 [®] - for use with Cree Lighting CAN-304 luminaires, 16 ga. 5052 aluminum XA-BXCCMW - for use with Jet-Philips, 21.60" [549mm] square, white XA-BXCCNW - for use with Elco Franciscan, 22.06" [560mm] square, white XA-BXCCPW - for use with LSI Dakota or Masters, 22.50" [572mm] square, white XA-BXCCQW - for use with Whiteway Riviera or Rig-A-Lite, 20.60" [523mm] square, white XA-BXCCRW - for use with Elco Merrit, 18.04" [459mm] square, white XA-BXCCSW - for use with LSI Richmond or Whiteway Civic, 23.00" [584mm] L x 13.00" [330mm] W, white	Pendant Mount Luminaires Pendant Mount Kits XA-PS12KIT [®] - 5" [127mm] pendant XA-PS18KIT [®] - 11" [279mm] pendant XA-PS22KIT [®] - 15" [381mm] pendant - Includes two conduit fittings and 3/4-14 NPT pipe threaded on two ends Hand-Held Remote XA-SENSREM - For successful implementation of the programmable multi-level option, a minimum of one hand-held remote is required
Direct Mount Junction Box/Stem Kit XA-EXCCJBOX - 6.0" [152mm] H x 3/4" [19mm] NPT Stem - Watertight - Rated for feed through 8 (4 in, 4 out) #12 AWC conductors	Direct Mount Beauty Plates XA-BXCCBPW - 26.17" [665mm] Beauty Plate Only (16 ga. steel), white XA-BXCCBP12W - 26.17" [665mm] Beauty Plate (18 ga. steel) w/12" [305mm] Backer Plate (16 ga. steel), white - For use in canopies where deck opening is larger than what is required for mounting the CPY250 luminaire. Maximum deck opening 10.75" x 15" (103mm x 375mm) XA-BXCCBP16W - 26.17" [665mm] Beauty Plate (18 ga. steel) w/16" [406mm] Backer Plate (16 ga. steel), white - For use in canopies where deck opening is larger than what is required for mounting the CPY250 luminaire. Maximum deck opening 12" x 15" (305mm x 375mm)

* Must specify color: BK (Black), BZ (Bronze), SV (Silver) or WH (White)

Ordering Information

Example: CPY250-B-DM-D-A-UL-SV

Product	Version	Mounting**	Optic	Lumen Package/ Input Power Designator	Voltage	Color Options	CCT	Options
CPY250	B							
CPY250	B	DM Direct HC Hook & Cord PD Pendant	D 0.91" [23mm] F Drop Lens Flat Lens	A 60W 13L 91W B 96W C 31W E 145W F 85W	UL Universal 120-277V UH* Universal 347-480V - Available with B, E, F input power designators only - Must specify either 34 or 48 voltages with 13L, A and C 34* 347V - Available with 13L lumen package and A & C input power designators only 48* 480V - Available with 13L lumen package and A & C input power designators only	BK Black BZ Bronze SV Silver WH White	30K 3000K 40K 4000K 57K 5700K	DIM 0-10V Dimming - Control by others - Refer to Dimming spec sheet for details - Can't exceed wattage of specified lumen package/ Input Power Designator HZ Class 1, Div. 2 Hazardous Location Certification - Available with DM and PD mounts only - PD mount with 34 & 48 voltages not available in Canada when ordered with luminaires with step-down transformers (13L lumen package, A & C input power designators) - Not available with K or PML options K NSF 2 Certification - Luminaires include NSF certification mark - Available with the DM mount only - Not available with the HZ or PML options PML Programmable Multi-Level - Available with UL voltage only - Refer to PML spec sheet for details

* 13L lumen package and A & C input power designators utilize a magnetic step-down transformer. For input power for 347 and 480V, refer to the Electrical Data table
** For Car Wash Applications please contact Cree Lighting @ 1-800-236-6800

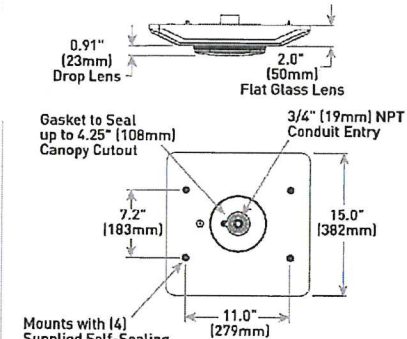
DM Mount GC TO SEE NOTES BELOW



Flat Lens



Drop Lens



GC TO REFERENCE PLANS FOR COLOR DESIGNATION

GC TO VERIFY AND SPECIFY IF NOT UL

GC TO VERIFY THAT FIXTURES CAN BE MOUNTED PER PLAN AND ALL NECESSARY HARDWARE IS SPECIFIED FOR INSTALLATION PRIOR TO PURCHASING

Weight	
12.5 lbs.	[5.7kg]

TYPE UU1

THE EDGE[®] Series

LED Area/Flood Luminaire

ARE-EDG-4M-AA-04-E-UL-BZ-525-40K

Rev. Date: V11 09/07/2021

Product Description

THE EDGE[®] Series has a slim, low profile design. Its rugged cast aluminum housing minimizes wind load requirements and features an integral, weatherlight LED driver compartment and high performance aluminum heat sinks. Various mounting choices: Adjustable Arm, Direct Arm, Direct Arm Long, or Side Arm (details on page 2). Includes a leaf/debris guard.

Applications: Parking lots, walkways, campuses, car dealerships, office complexes, and internal roadways

GC TO VERIFY THAT FIXTURES CAN BE MOUNTED PER PLAN AND ALL NECESSARY HARDWARE IS SPECIFIED FOR INSTALLATION PRIOR TO PURCHASING

Performance Summary

Patented NanoOptic [®] Product Technology
Assembled in the U.S.A. of U.S. and imported parts
CRI: Minimum 70 CRI (4000K & 5700K); 80 CRI (3000K); 90 CRI (5000K)
CCT: Turtle Friendly Amber, 3000K (+/- 300K), 4000K (+/- 300K), 5000K (+/- 500K), 5700K (+/- 500K) standard
Limited Warranty: 10 years on luminaire/10 years on Colorfast DeltaGuard [®] finish /1 year on accessories

* See <http://creelighting.com/warranty> for warranty terms.

Accessories

Field-Installed	
Bird Spikes XA-BRDSPK Hand-Held Remote XA-SENSREM - For successful implementation of the programmable multi-level option, a minimum of one hand-held remote is required	Backlight Control Shields XA-20BLS-4 - Four-pack - Unpainted stainless steel Shorting Cap XA-XSLSHRT NEMA[®] 3-Pin Photocell C-ACC-A-PCELL-NEMA3-LV On/off functionality only - Available with UL voltage only

CONTRACTOR TO ENSURE FIXTURE IS INSTALLED LEVEL TO GROUND

GC TO VERIFY AND SPECIFY IF NOT UL

GC TO REFERENCE PLANS FOR COLOR DESIGNATION

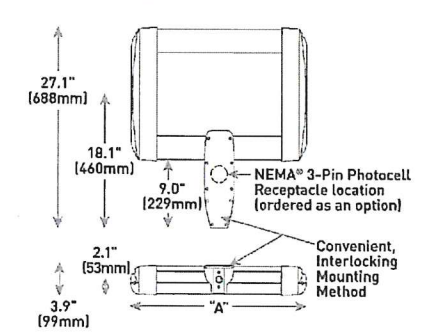
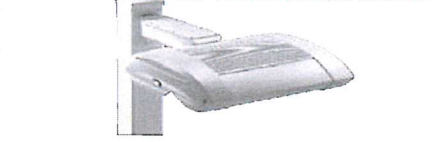
Ordering Information

Example: ARE-EDG-2M-AA-12-E-UL-SV-350

Product	Optic	Mounting*	LED Count (x10)	Series	Voltage	Color Options	Drive Current	Options		
ARE-EDG	2M Type II Medium	3MB Type III w/BLS	4MP Type IV Medium	AA Adjustable Arm	02	E	UL	BK Black	350 350mA	DIM 0-10V Dimming - Control by others - Refer to Dimming spec sheet for details - Can't exceed specified drive current - Not available with PML options F Fuse - Compatible only with 120V, 277V or 347V (phase to neutral) - Consult factory if fusing is required for 208V, 240V or 480V (phase to phase) - Refer to PML spec sheet for availability with PML options HL Hi/Low [Dual Circuit Input] - Refer to PML spec sheet for details - Sensor not included P Photocell - Refer to PML spec sheet for availability with PML options - Available with UL voltage only PML Programmable Multi-Level, 20-40" Mounting Height - Refer to PML spec sheet for details - Intended for downlight applications at 0" tilt
					06	UH Universal	347-480V	BZ Bronze		
	2MB Medium	3MP Type II w/BLS	5M Type III Medium	DA Direct Arm	08		UL	SV Silver	700 700mA	
					10	DL Direct Long Arm	WH White	700 700mA		
	2MP Medium	3MP Type II w/BLS	5M Type III Medium	DL Direct Long Arm	12		UL	WH White	700 700mA	
					14					
	16									
	FLD-EDG	25 25" Flood	70 70" Flood	N6 NEMA [®] 6	AA Adjustable Arm					
		40 40" Flood	SN SN Sign		SA Sidel Arm					

* Reference EPA and pole configuration suitability data beginning on page 19

DA Mount



LED Count (x10)	Dim. "A"	Weight
02	12.1" [306mm]	21 lbs. [10kg]
04	12.1" [306mm]	24 lbs. [11kg]
06	14.1" [357mm]	27 lbs. [12kg]
08	16.1" [408mm]	28 lbs. [13kg]
10	18.1" [459mm]	32 lbs. [15kg]
12	20.1" [510mm]	34 lbs. [15kg]
14	22.1" [560mm]	37 lbs. [17kg]
16	24.1" [611mm]	41 lbs. [19kg]

AA/DL/SA Mount - see page 22 for weight & dimensions

NORR Associates Inc. and the undersigning licensed professionals do not represent that these plans and specifications are suitable for any other client and/or site other than the one denoted. NORR Associates Inc. and the undersigning licensed professional disclaims responsibility for these plans and specifications if they are used in whole or in part by another client or at any other site.

This drawing is not final or to be used for construction until signed by the licensed professionals.

All drawings and written material associated with this project constitute the original and unpublished work of NORR Associates Inc. and the same may not be duplicated, used or disclosed without the written consent of NORR Associates Inc.

Seal



NORR Associates Inc.
An Ingenium Group Company
1631 Alhambra Blvd, Suite 100
Sacramento, California, 95816 USA
(916) 930-0210
www.norr.com

Project Manager

R. DEUTSCH

Project Leader

J. ELLIOTT

Checked

J. ELLIOTT

Drawn

G. ESTRADA

Client

BANK OF AMERICA

JLL

2000 CLAYTON ROAD

CONCORD CA 94520

CONTACT: KEVIN SILKWOOD

M +1 206-507-1822

Kevin.Silkwood@am.jll.com

Project

BANK OF AMERICA

FAIRAX | ATM

769-B Center Blvd.

Fairfax, CA 94930

Drawing Title

LUMINARIES CUT SHEETS

TYPE BQ

Project No.

JCSR21-0263-00

Drawing No.

A1.04



US: creelighting.com T (800) 236-6800
Canada: creelighting-canada.com T (800) 473-1234



US: creelighting.com (800) 236-6800
Canada: creelighting-canada.com (800) 473-1234

