



AUGUST 29, 2022

RE: ROADWAY STABILIZATION, 378 SCENIC ROAD AND 78 WREDEN AVENUE, TOWN PROJECT # 51-813, ADDENDUM NO. 1

Dear Sir/Madam:

Enclosed herein is Addendum Number 1 for the above referenced project. Addendum Number 1 forms a part of the Contract Documents and modifies OR clarifies the original plans and specifications and shall be acknowledged in the Addendum Acknowledgement page. **All other conditions remain the same.**

ADDENDUM NUMBER 1 (Total number of pages including this page and attachments: 6 Pages)

1. The Bid Opening Date has been postponed. Sealed bids will be accepted up to but not later than 2 p.m. on Thursday, September 8, 2022.
2. Detail 1 on Sheet 4 of the plans has been revised to clarify backfilling of voids/sinkholes beneath Wreden Avenue, behind the existing retaining wall (revised Sheet 4 attached).
 - a. Bid item for Controlled Low-Strength Material (CLSM) backfill of voids/sinkholes behind and below the existing wall has been added.
 - b. Bid Schedule B has been replaced in its entirety (revised Bid Schedule attached).

Response to Bidders Questions:

1. How will sinkholes/voids behind the existing wall and beyond the limits of the culvert replacement be backfilled?

Voids shall be backfilled with flowable Controlled Low-Strength Material (CLSM) following construction of the new retaining wall and associated backdrain.

END ADDENDUM NUMBER 1

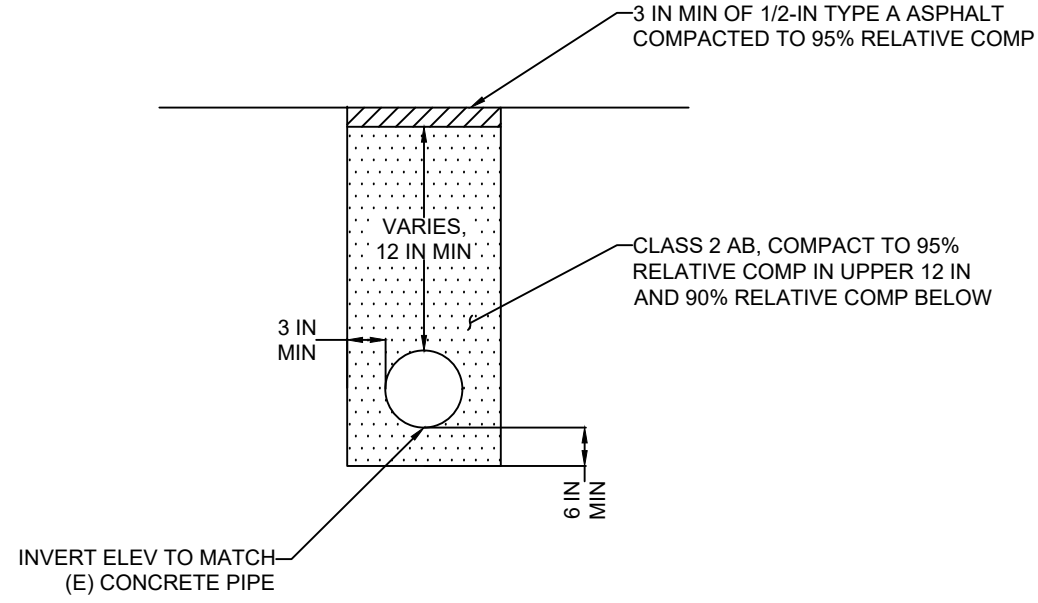
Please complete the Addendum Acknowledgement in the Proposal Form acknowledging receipt of this addendum.

Thank you for your interest in this project. If you have any questions regarding this addendum, please contact Mike Jewett (mjewett@millerpac.com), before 12 PM August 31, 2022 at Miller Pacific Engineering Group, 707-765-6140.

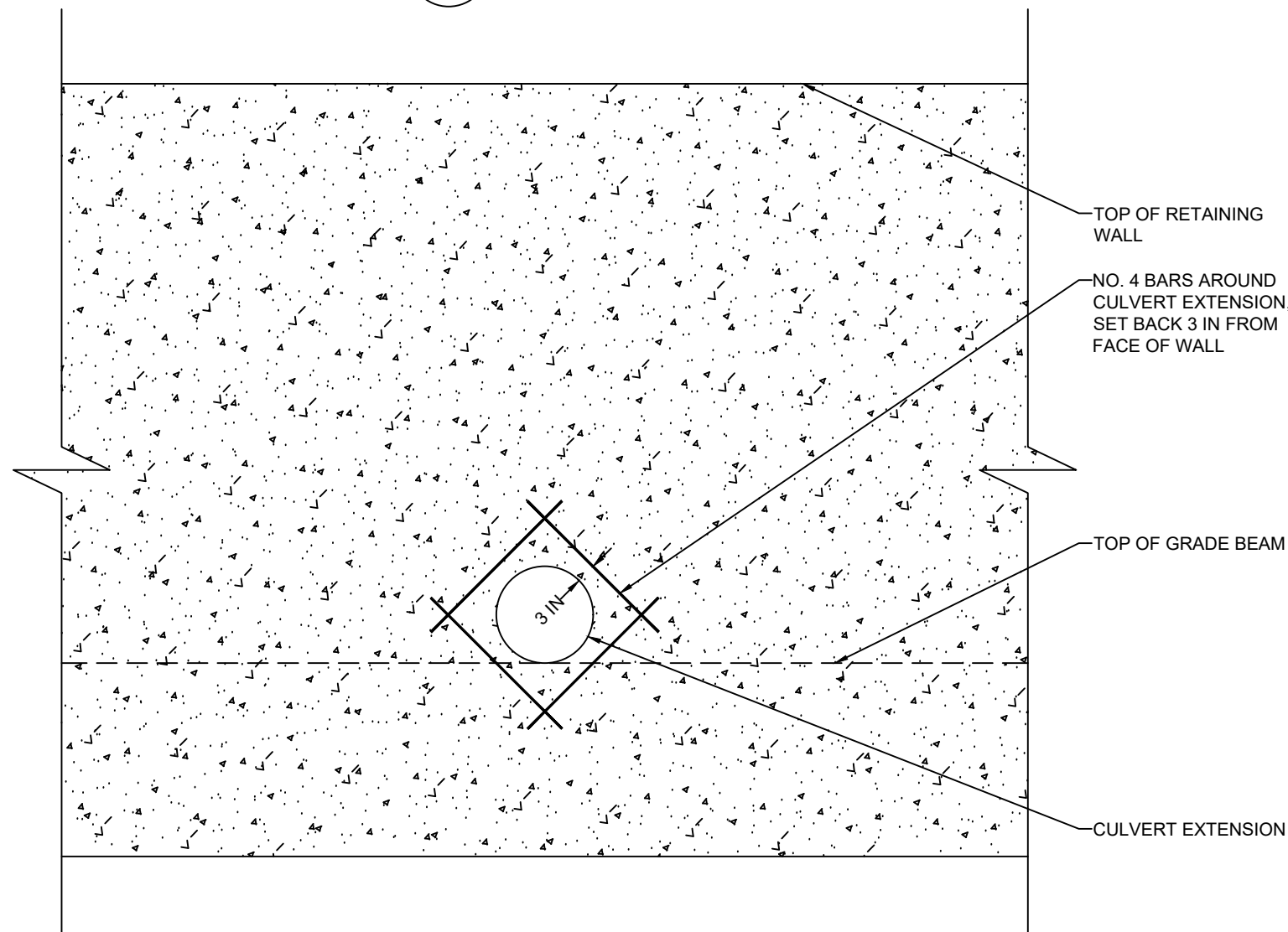
Sincerely Yours,
LOREN UMBERTIS
Director of Public Works

ADDENDUM NO. 1

By:
Mike Jewett, C.E.G. and Scott Stephens, G.E.
Miller Pacific Engineering Group
Interim Town Engineer



8 CONCRETE CULVERT (NO SCALE)



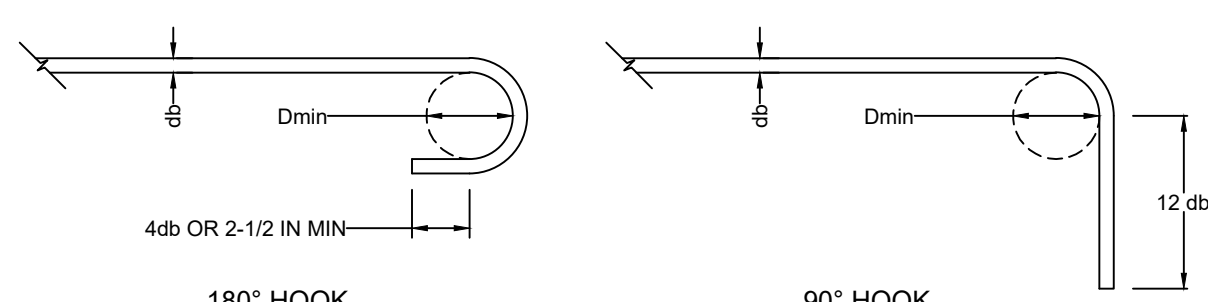
7 REINFORCING AT CULVERT EXTENSION (NO SCALE)

DEVELOPMENT LENGTH										
28-DAY COMP STRENGTH	LOCATION	BAR SIZE								
		NO. 3	NO. 4	NO. 5	NO. 6	NO. 7	NO. 8	NO. 9	NO. 10	NO. 11
4,000 PSI	TOP	12 IN	15 IN	23 IN	23 IN	37 IN	47 IN	58 IN	70 IN	84 IN
	BOTTOM	12 IN	12 IN	17 IN	18 IN	29 IN	36 IN	44 IN	54 IN	65 IN
5,000 PSI	TOP	12 IN	14 IN	20 IN	20 IN	33 IN	42 IN	52 IN	63 IN	75 IN
	BOTTOM	12 IN	12 IN	16 IN	16 IN	26 IN	32 IN	40 IN	49 IN	58 IN

HOOKED DEVELOPMENT LENGTH										
28-DAY COMP STRENGTH	LOCATION	BAR SIZE								
		NO. 3	NO. 4	NO. 5	NO. 6	NO. 7	NO. 8	NO. 9	NO. 10	NO. 11
4,000 PSI	N/A	8 IN	10 IN	12 IN	15 IN	17 IN	19 IN	22 IN	24 IN	N/A
5,000 PSI	N/A	7 IN	9 IN	11 IN	13 IN	15 IN	17 IN	20 IN	22 IN	N/A

LAP SPLICE LENGTH										
28-DAY COMP STRENGTH	LOCATION	BAR SIZE								
		NO. 3	NO. 4	NO. 5	NO. 6	NO. 7	NO. 8	NO. 9	NO. 10	NO. 11
4,000 PSI	TOP	12 IN	20 IN	29 IN	29 IN	48 IN	62 IN	75 IN	91 IN	109 IN
	BOTTOM	12 IN	15 IN	23 IN	23 IN	37 IN	47 IN	58 IN	70 IN	84 IN
5,000 PSI	TOP	12 IN	18 IN	26 IN	26 IN	43 IN	54 IN	67 IN	82 IN	98 IN
	BOTTOM	12 IN	14 IN	20 IN	20 IN	33 IN	42 IN	52 IN	63 IN	75 IN

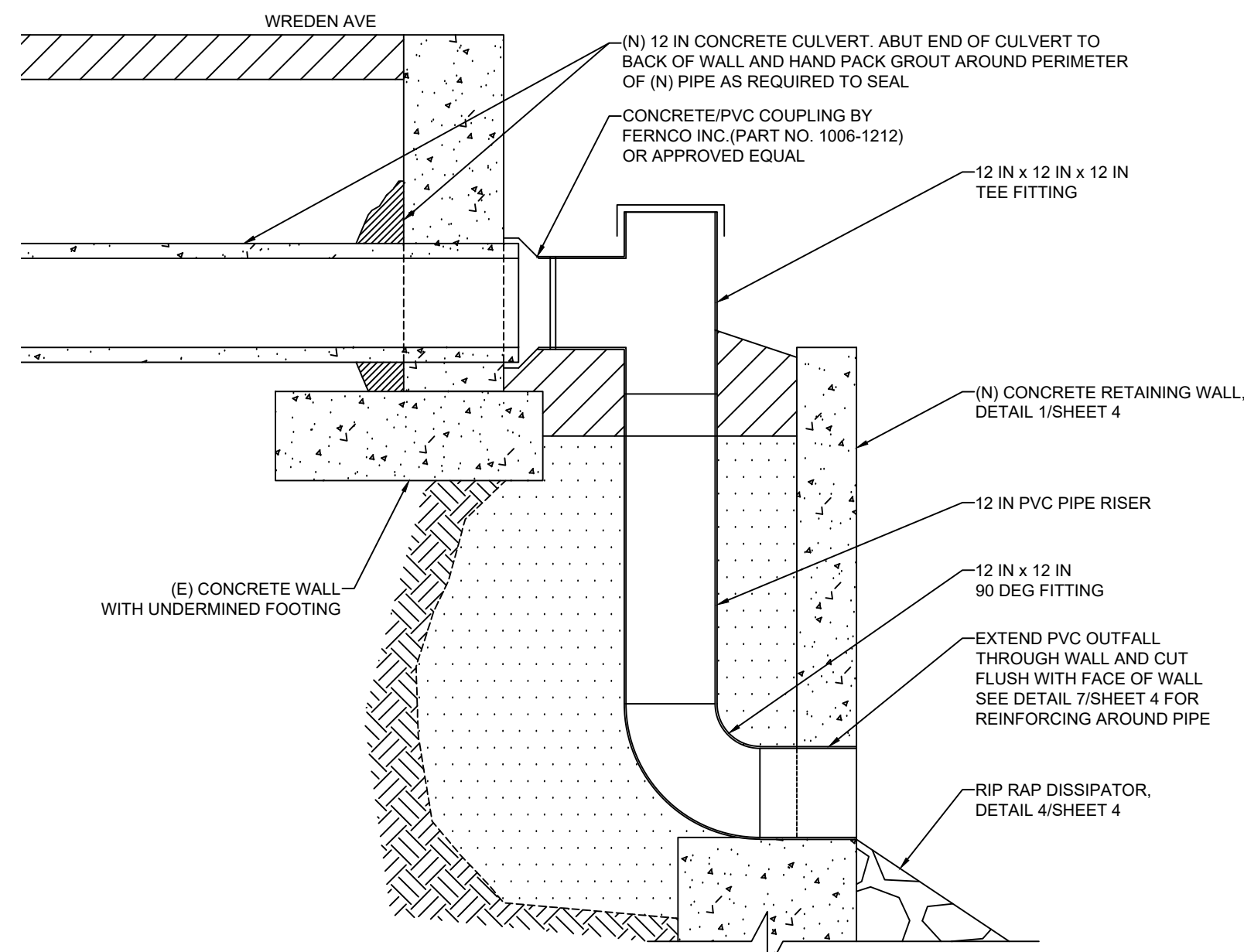
MINIMUM REBAR BEND DIAMETERS (Dmin)



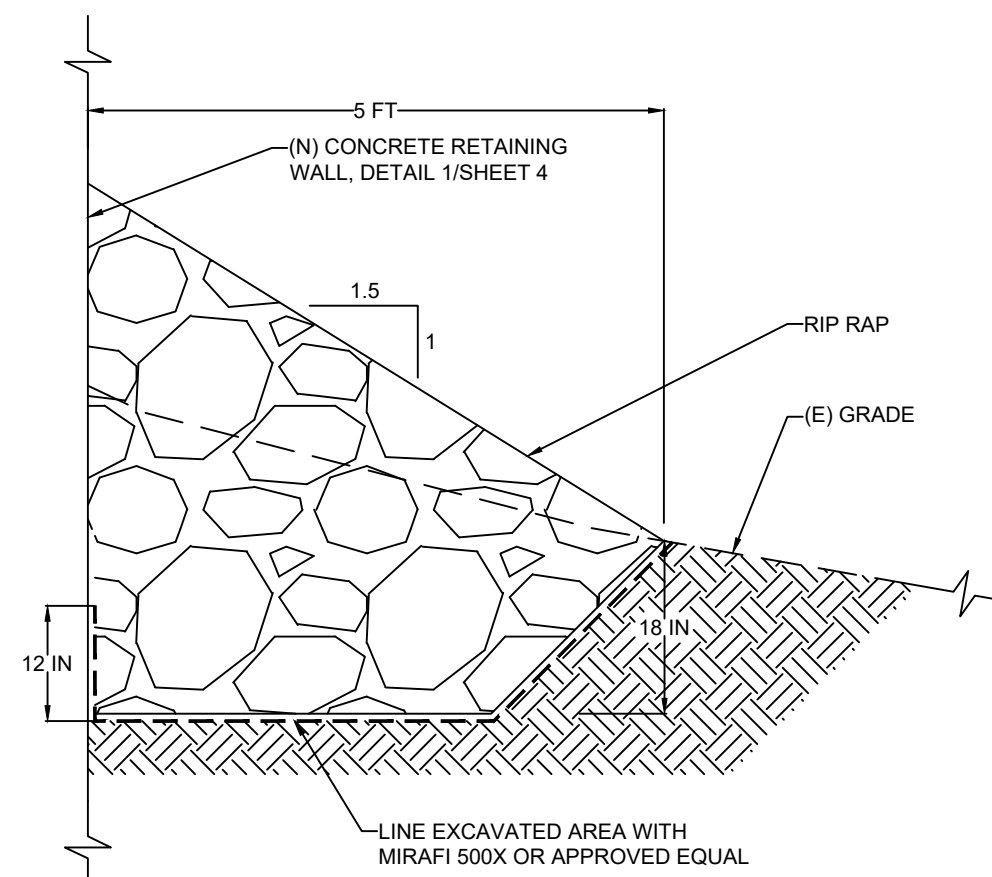
PRINCIPAL REINFORCEMENT	
BAR SIZE	Dmin
NO. 3 TO NO. 8	6 x db
NO. 9 TO NO. 11	8 x db
NO. 14 TO NO. 18	10 x db

HOOKS & STIRRUPS	
BAR SIZE	Dmin
NO. 3	1-1/2 IN
NO. 4	2 IN
NO. 5	2-1/2 IN

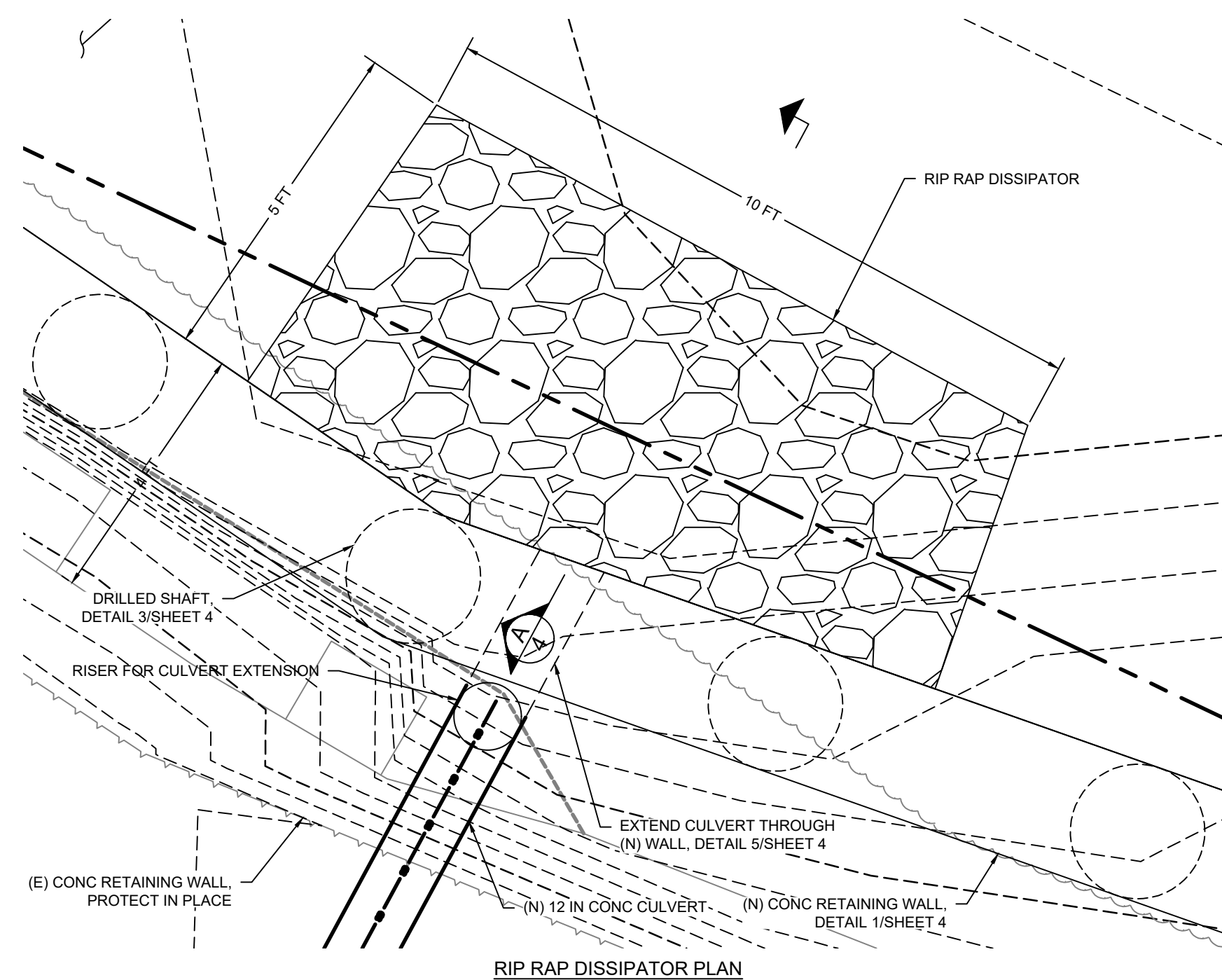
6 REINFORCING DETAILS (NO SCALE)



5 CULVERT EXTENSION (NO SCALE)

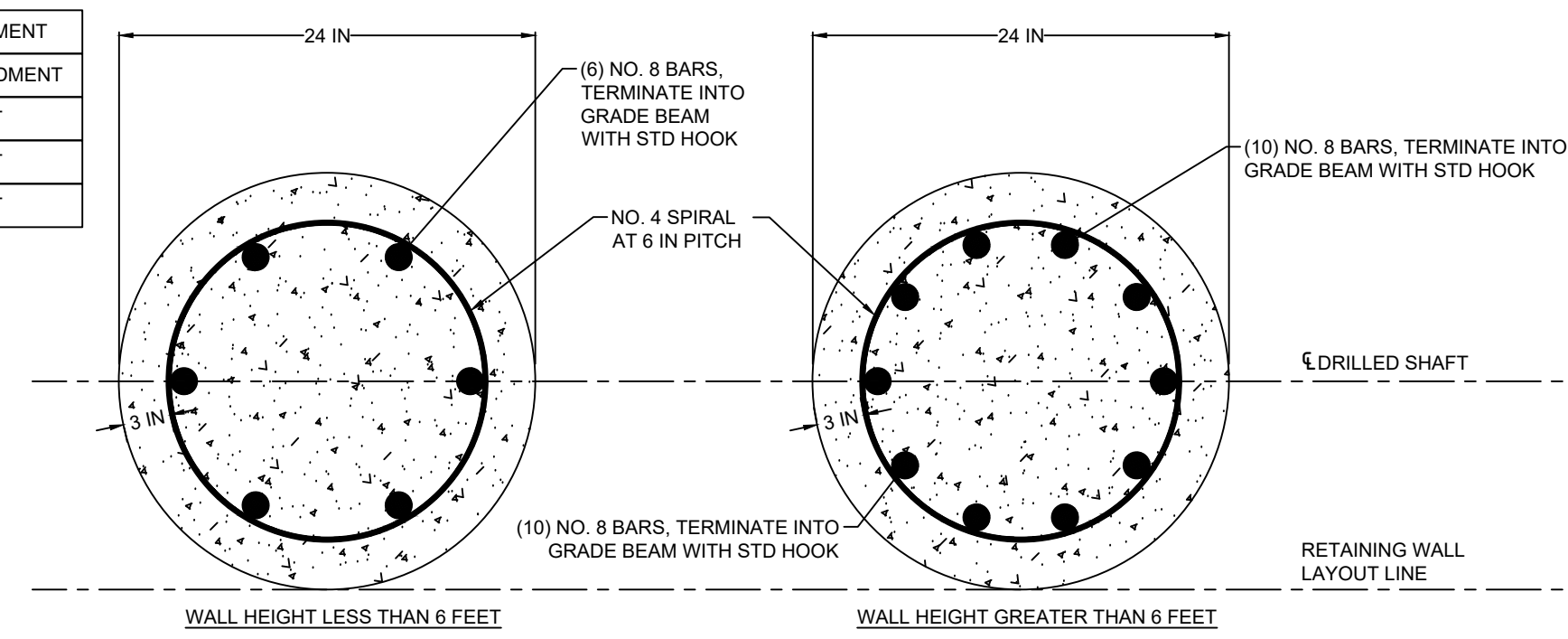


RIP RAP DISSIPATOR SECTION

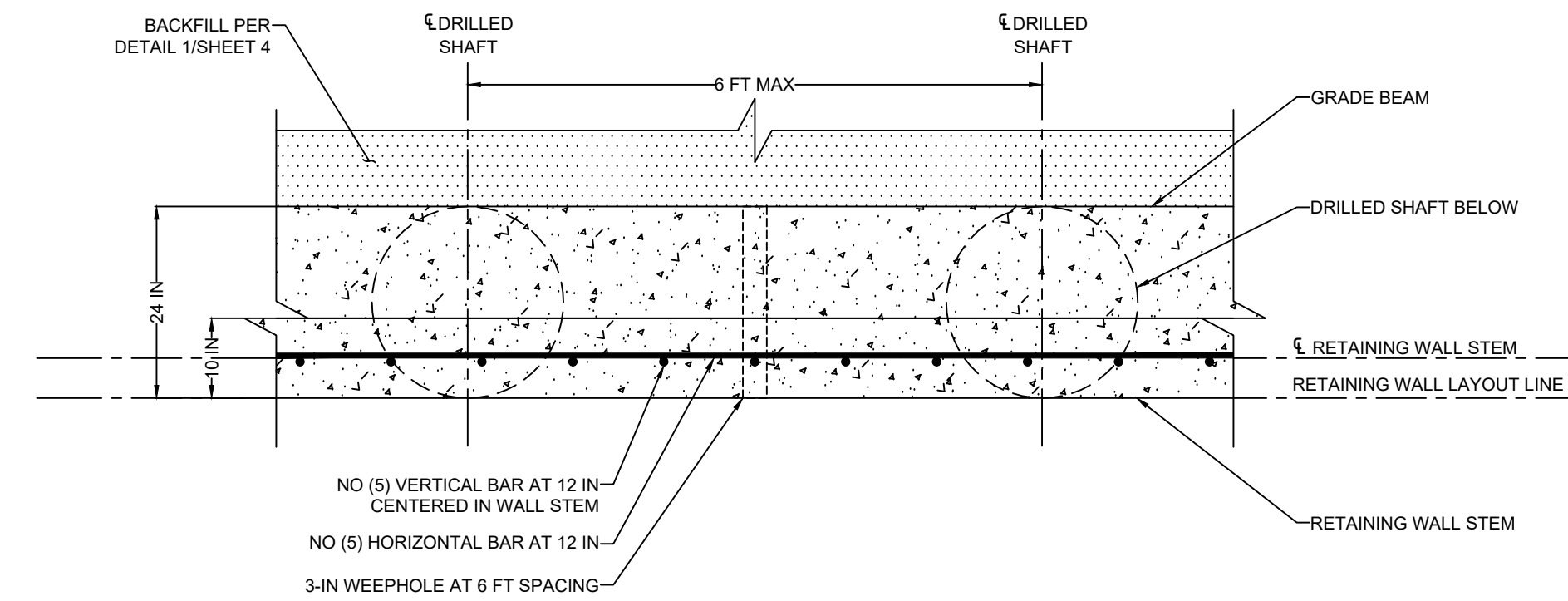


4 RIP RAP DISSIPATOR DETAIL (NO SCALE)

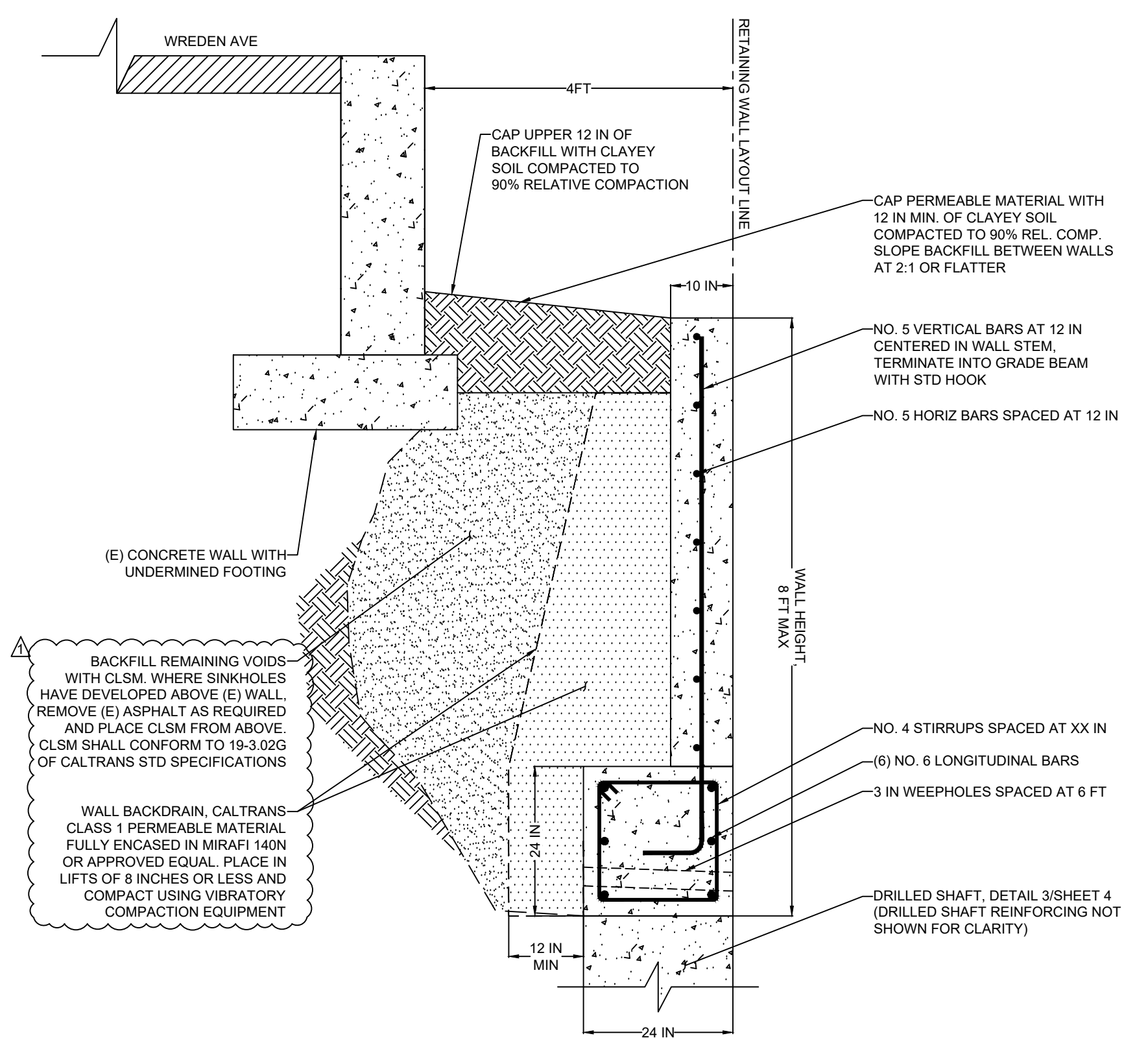
DRILLED SHAFT EMBEDMENT	
WALL HEIGHT	MIN. EMBEDMENT
4 FT OR LESS	10 FT
4 TO 6 FT	12 FT
6 TO 8 FT	15 FT



3 DRILLED SHAFT DETAIL (NO SCALE)



2 RETAINING WALL PLAN (NO SCALE)



1 RETAINING WALL DETAIL (NO SCALE)

Revision	Date	By
3/22/2021	RCA	
7/5/2022	RCA	
7/19/2022	RCA	

Revision	Date	By
90% DESIGN SUBMITTAL		
100% DESIGN SUBMITTAL		
BID SET		

504 Redwood Blvd.
Suite 220
Novato, CA 94947
T 415 / 382-3444
F 415 / 382-3450
www.millerpac.com

MILLER PACIFIC ENGINEERING GROUP

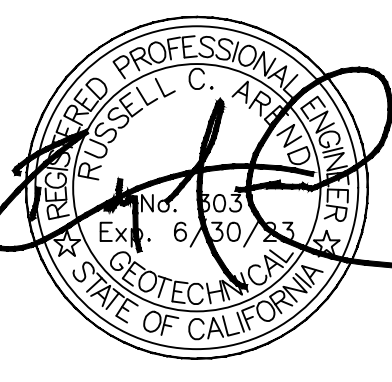
A CALIFORNIA CORPORATION, © 2021, ALL RIGHTS RESERVED
FILE: 201-182 Drawings, Rev 0, Bid Set.dwg

Designed	Date	Drawn	Date	Checked	Date
RCA		RCA		SAS	

DETAILS

Storm Damage Repair
78 Wreden Ave
Fairfax, California

Project No. 201.182



SHEET

4

BID SCHEDULE A – 378 SCENIC ROAD STABILIZATION

NO.	ITEM DESCRIPTION	UNIT OF MEASURE	EST. QTY.	UNIT PRICE	ITEM COST
1.	Mobilization, bonds, permits, layout of work, traffic control, daily cleanup, demobilization, final clean up, and all other misc. items not included below	LS	1		
2.	Erosion & Sediment Control: all minimum control measures for small construction projects required by MCSTOPPP	LS	1		
3.	Grading: excavate bench for wall construction, trim scarps. Offhaul and legally dispose of all debris and excess soil.	LS	1		
4.	Construct 35 LF, 8-foot tall reinforced concrete retaining wall.	SF	280		
5.	Drainage and Backfill, includes moisture conditioning, placement and compaction of wall drainage and backfill	CY	45		
6.	Grading: Preparation and compaction of subgrade, baserock, and asphalt concrete	SF	260		
7.	Permanent Erosion Control	SF	1,100		
BASE BID TOTAL					\$

BID SCHEDULE B – 78 WREDEN AVENUE

NO.	ITEM DESCRIPTION	UNIT OF MEASURE	EST. QTY.	UNIT PRICE	ITEM COST
1.	Mobilization, bonds, permits, layout of work, traffic control, daily cleanup, demobilization, final clean up, and all other misc. items not included below	LS	1		
2.	Erosion & Sediment Control: all minimum control measures for small construction projects required by MCSTOPPP	LS	1		
3.	Drilling Bench Excavation, includes excavation, offhaul and disposal of soil for construction bench	CY	15		
4.	Drilled Pier Construction, includes drilling, staging and offhaul of drill spoils, reinforcing steel and concrete placement	LF	111		
5.	Grade Beam and Wall Stem Construction, includes forming, reinforcing steel and concrete placement.	SF	250		
6.	Wall Drainage, includes placement and compaction of Class I wall drainage and backfill	CY	40		
7.	Wall backfill, includes placement of Controlled Low-Strength Material (CLSM) to backfill sinkholes/voids behind existing wall	CY	10		
8.	Replace Concrete Culvert, includes pavement demolition, trenching, removal and disposal of existing culvert, installation of new concrete pipe, backfill and pavement restoration.	LF	45		
9.	Culvert Extension, includes PVC culvert extension through face of new wall	LS	1		
10.	Rip Rap Dissipator, includes excavating and placing rip rap and geotextile placement.	LS	1		
11.	Asphalt overlay, includes all work and materials to construct asphalt overlay.	SF	2,200		
BASE BID TOTAL					\$

AGGREGATE BID PRICE BASED ON SUM OF BID SCHEDULES "A" and "B"

\$ _____
Total Base Bid in Numbers

The basis for award of contract shall be the Contractor's Aggregate Base Bid only, which is equal to the sum of the bids shown on Bid Schedules "A" and "B".

The costs for any work shown or required in the Contract Documents, but not specifically identified as a bid line item are to be included in the related bid line items and no additional compensation shall be due to Contractor for the performance of the work.

All blank spaces appearing above must be filled in. Failure to fill in any blank spaces may render the Bid non-responsive. In case of discrepancy between the Unit Price and Item Cost set forth for a unit basis item, the Unit Price shall prevail and be utilized as the basis for determining the lowest responsive, responsible Bidder. However, if the amount set forth as a Unit Price is ambiguous, unintelligible or uncertain for any cause, or is omitted, or is the same amount as the entry in the Item Cost column, then the amount set forth in the Item Cost column for the item shall prevail and shall be divided by the estimated quantity for the item and the price thus obtained shall be the Unit Price.

For purposes of evaluating Bids, the Town will correct any apparent errors in the extension of unit prices and any apparent errors in the addition of lump sum and extended prices.

The estimated quantities for Unit Price items are for purposes of comparing Bids only and the Town makes no representation that the actual quantities of work performed will not vary from the estimates. Final payment shall be determined by the Town from measured quantities of work performed based upon the Unit Price.

The undersigned agrees that this Bid Schedule constitutes a firm offer to the Town which cannot be withdrawn for the number of calendar days indicated in the Notice Inviting Bids from and after the bid opening, or until a Contract for the work is fully executed by the Town and a third party, whichever is earlier.

If the Contract Documents specify alternate bid items, the Town can choose to include any, all, or none of the alternate bid items in the Work. If the Town selects any of the alternate bid items, the corresponding alternate bid prices shall be added to or deducted from Base Bid Price for the work. The Town can award/select alternate bid items at any time(s).

Name of Bidder _____

Signature _____

Name and Title _____

Dated _____