

# RESPONSE TO DESIGN REVIEW CRITERIA

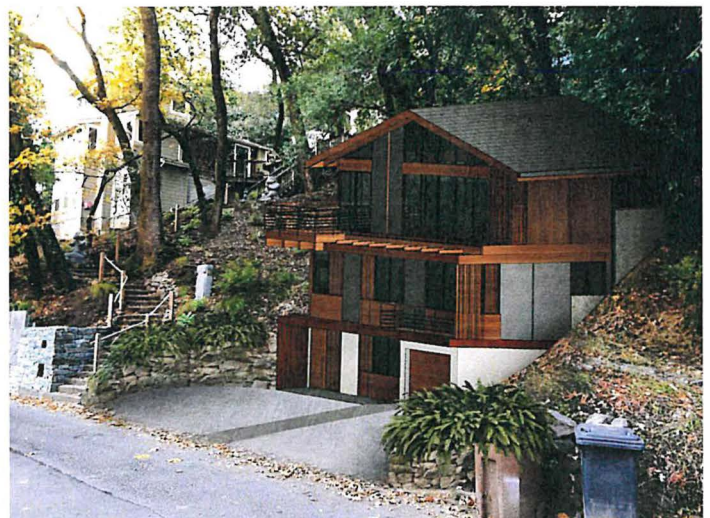
KAPPE ARCHITECTS

67 Tamalpais Road

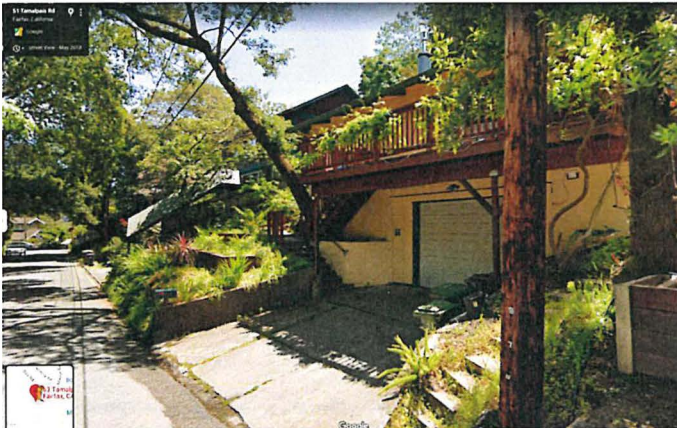
Our proposed design shares many of the design characteristics in this neighborhood, such as color, exterior siding material, roof form, window openings, as well as a terraced footprint that forms to the sloped topography of the site. To demonstrate this, we have compiled a sample of the nearby homes that can be viewed on Google Street Viewer, to exemplify those shared characteristics, and show how our design harmoniously fits in with the aesthetics of the community. Houses that were not visible due to trees and landscaping were not included. Below is a map indicating the properties we chose to study (blue) in order to gather insight on the neighboring residence's design styles. Our property and proposed design is indicated in orange.

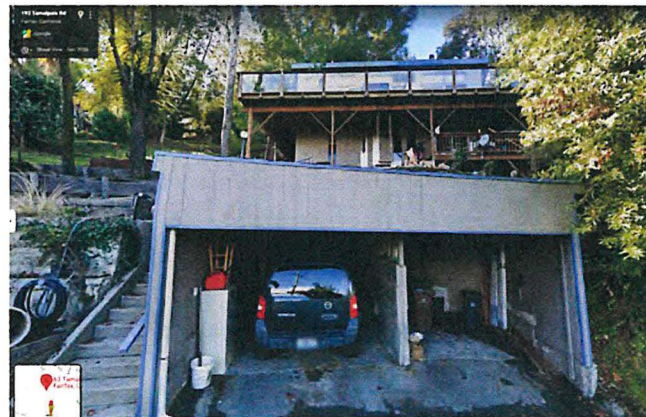
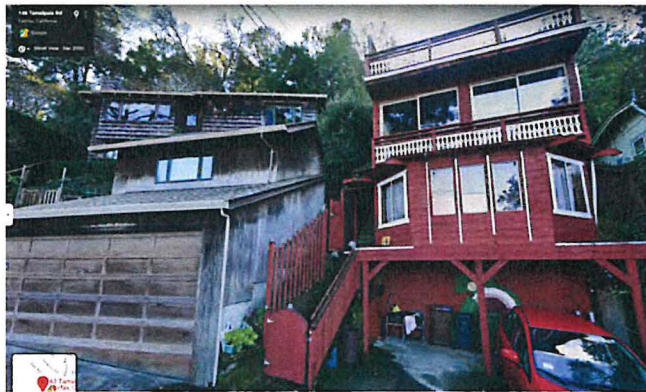
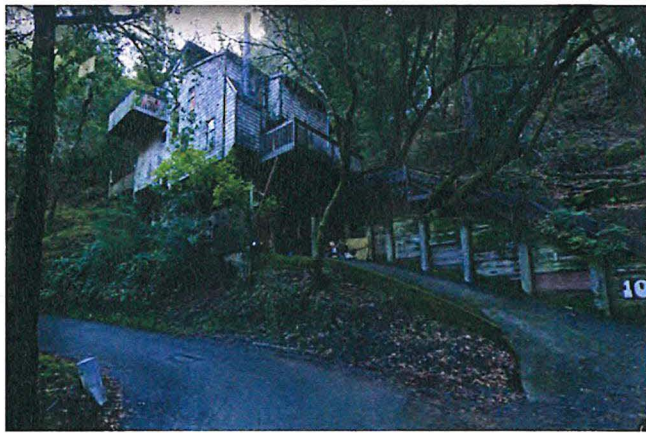
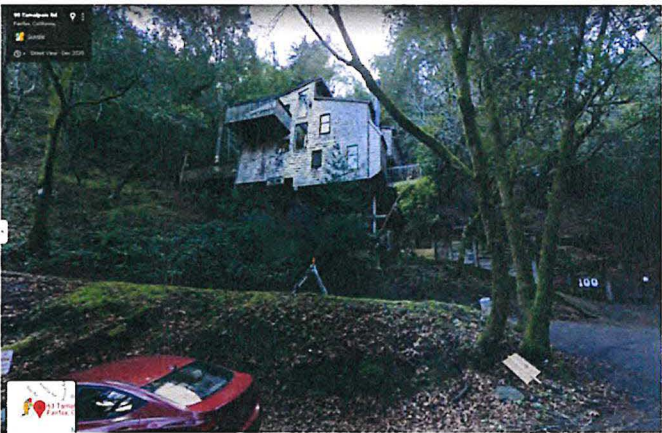


For reference, below is a rendering of our proposed design for comparison purposes to the neighboring houses.



The following are houses in the neighborhood taken from Google Street View: The characteristics shared are: brown natural tone for siding, gable roofs, and garage at street with deck and railings above. Main living spaces are above, with windows facing the street. The homes are also terraced, with the upper floor pushed back on the site to match the natural grade. House numbers are located on the top left of each drawing. The homes vary in typology, however, through our research we believe we came up with a design that blends with the surroundings.





ATTACHMENT D