

# Vegetation Management

Town of Fairfax

August 7, 2023



# 1 Keeping Trees Away from Powerlines

---

# 2 What to Expect

---

# 3 Community Resources



**When trees are too close to powerlines, they can cause a power outage or wildfire.**

**That's why each year we:**

- ✓ Inspect ~100,000 miles of powerlines
- ✓ Trim or cut down more than 1 million trees that pose a safety concern
- ✓ Address dead, dying or hazard trees



**We also reduce wildfire risk through additional vegetation work.**

**This year, across our service area we are:**

- ✓ Reviewing and cutting down trees identified through previous efforts that pose a safety concern
- ✓ Conducting additional inspections in high fire-risk areas near circuits with an increased risk for vegetation outages
- ✓ Trimming additional trees near circuits that have experienced a high volume of vegetation caused power outages



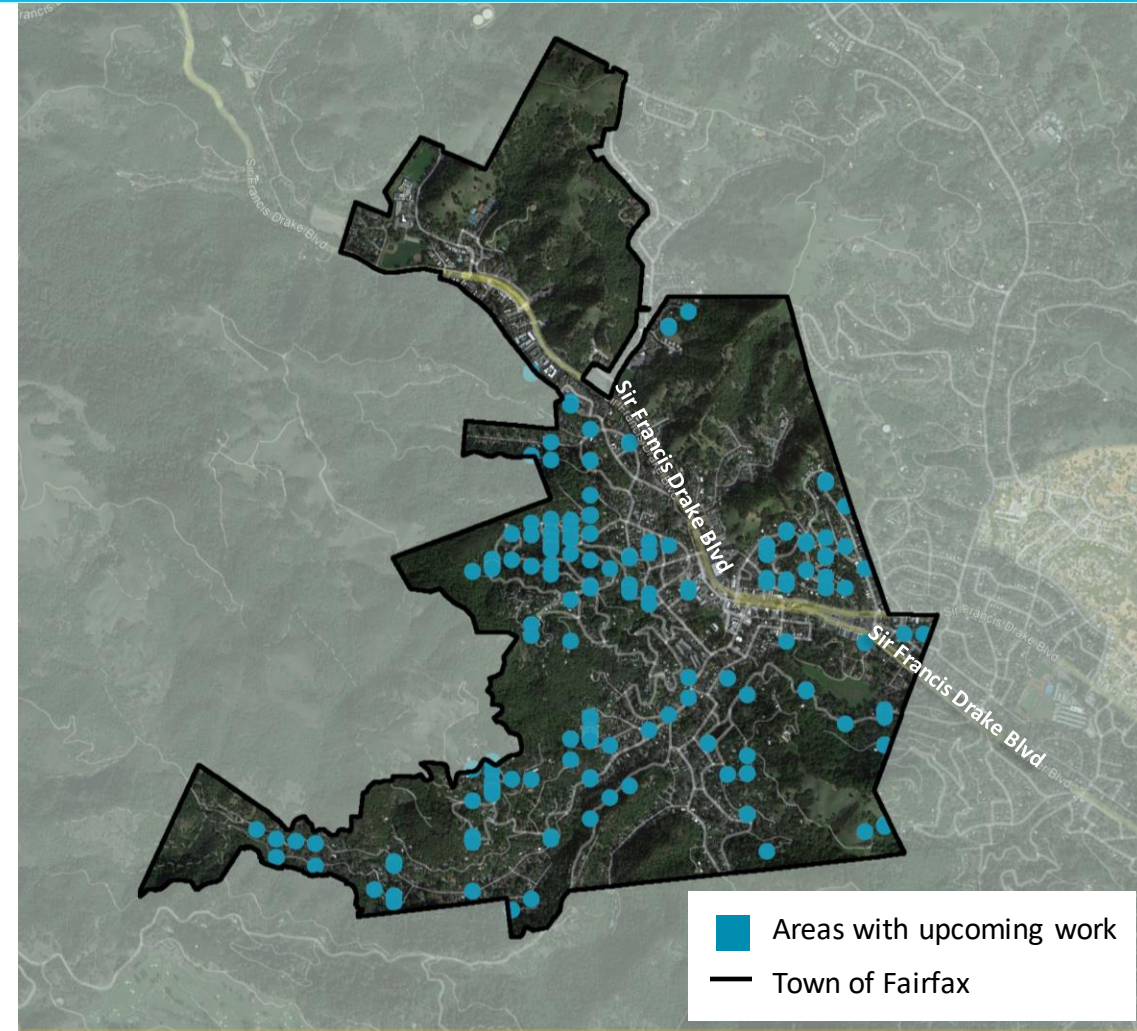
# Vegetation Management Work in the Town of Fairfax

## In 2022, we:

- Completed work on **1,562 trees**  
1,043 trims, 519 removals

## In 2023, we:

- Completed work on **529 trees**  
480 trims, 49 removals
- Will inspect an additional approx. **700 trees** and perform work as needed



Customers can learn more at [pge.com/trees](https://www.pge.com/trees)

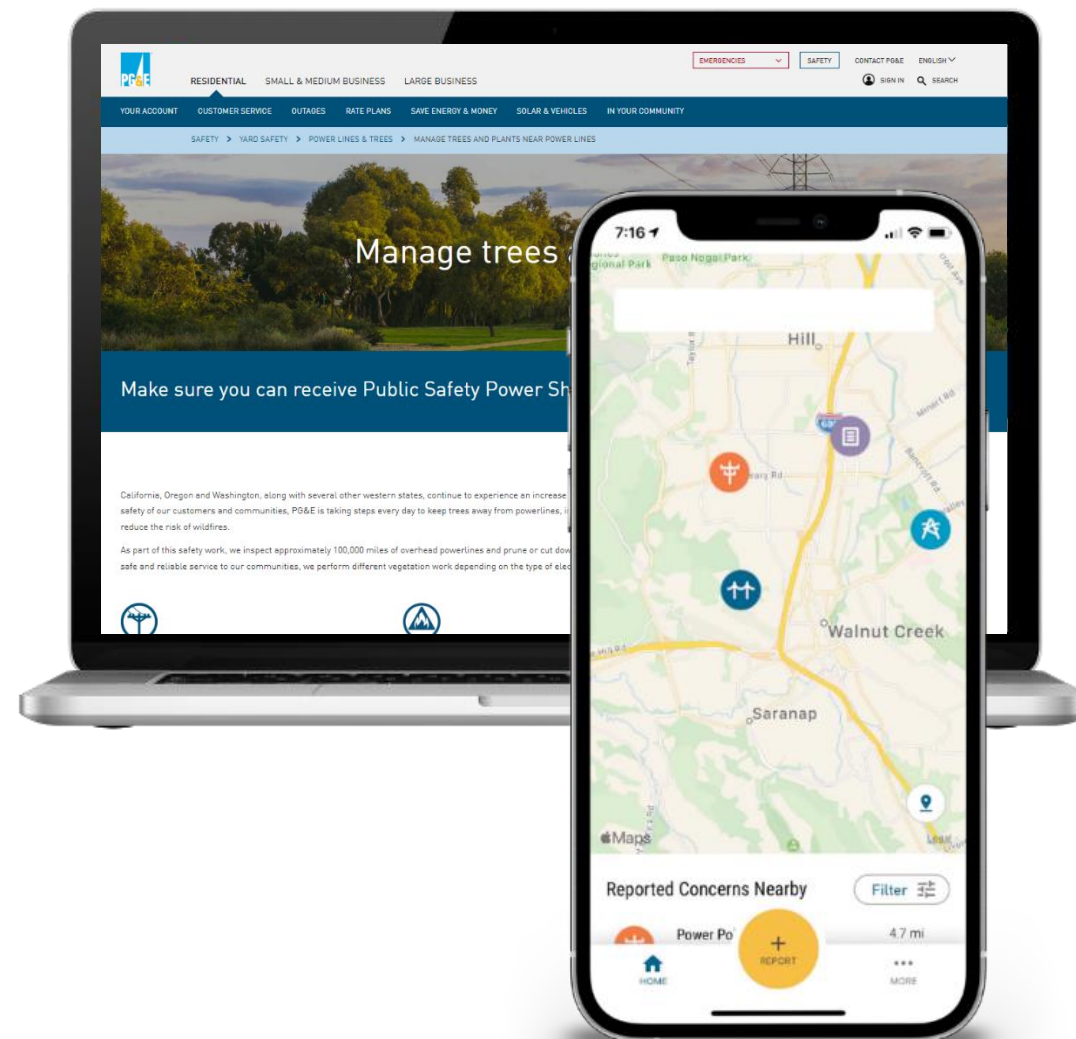
# What to Expect During this Work

- ① **Sending advance notifications** to impacted property owners before work begins
- ② **Inspecting** for potential safety concerns
- ③ **Trimming or cutting down trees** as needed for safety
- ④ **Chipping and hauling away** small debris where possible, and placing larger wood in a safe location on site
- ⑤ **Conducting safety and quality checks** through follow-up inspections



## Customers can learn more about our efforts to keep trees away from powerlines by:

- ✓ Visiting us online at [pge.com/trees](https://pge.com/trees)
- ✓ Calling **1-800-564-5080**
- ✓ Downloading the “PG&E Report It” Safety App at [pge.com/reportit](https://pge.com/reportit)
  - Customers can submit photos of non-emergency safety concerns



# Questions?

Email: [treesafety@pge.com](mailto:treesafety@pge.com)





Thank you

