

ABBREVIATIONS

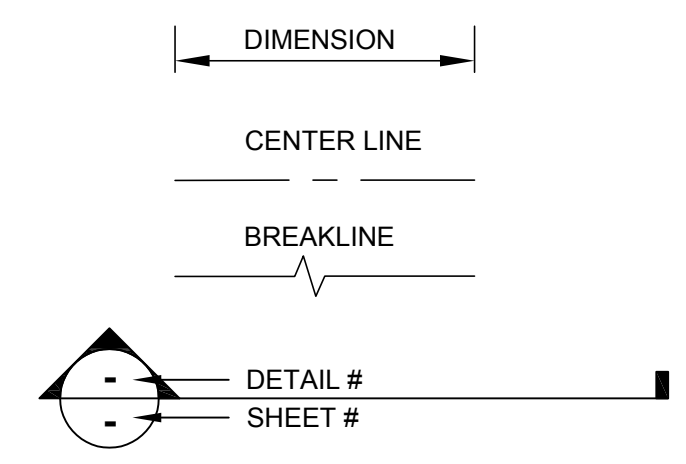
AB	AGGREGATE BASE	LP	LOW POINT
AC	ASPHALT CONCRETE	MH	MANHOLE / MAINTENANCE HOLE
AD	AREA DRAIN		MARIN MUNICIPAL WATER DISTRICT
C&G	CURB & GUTTER	MMWD	
CA MUTCD	CALIFORNIA MANUAL ON UNIFORM TRAFFIC CONTROL DEVICES	NTS	NOT TO SCALE
CB	CATCH BASIN	POC	POINT ON CURVE
CIP	CAST IRON PIPE	PCC	POINT OF COMPOUND CURVE
CL	CENTERLINE / CONTROL LINE	P.C.C.	PORTLAND CEMENT CONCRETE
CMP	CORRUGATED METAL PIPE	PVC	POLYVINYL CHLORIDE PIPE
CONC	CONCRETE	R.C.	RELATIVE COMPACTION
CP	CONTROL POINT	RCP	REINFORCED CONCRETE PIPE
CR	CURB RAMP	ROW	RIGHT OF WAY
DI	DROP INLET	RSP	ROCK SLOPE PROTECTION
EG	EXISTING GRADE	SD	STORM DRAIN
EL	ELEVATION	SDCO	STORM DRAIN CLEANOUT
EX	EXISTING	SDMH	STORM DRAIN MAINTENANCE HOLE
FG	FINISH GRADE	SF	SQUARE FEET
FH	FIRE HYDRANT	SL	STREET LIGHT
FL	FLOWLINE	SS	SANITARY SEWER
FS	FINISH SURFACE	SSMH	SANITARY SEWER MAINTENANCE HOLE
GALV	GALVANIZED	STL	STEEL
GB	GRADE BREAK	TC	TOP OF CURB
HMA	HOT MIX ASPHALT	TYP	TYPICAL
HP	HIGH POINT	UCS	MARIN COUNTY UNIFORM CONSTRUCTION STANDARDS
INV	INVERT	UNO	UNLESS NOTED OTHERWISE
LF	LINEAR FEET	VIF	VERIFY IN FIELD
LOS	LINE OF SIGHT		

LINETYPES

EXISTING		PROPOSED
	ELECTRICAL LINE	
	GAS LINE	
	WATER LINE	
	OVERHEAD UTILITY	
	SANITARY SEWER LINE	
	STORM DRAIN	
	CENTERLINE	
	CONTOUR - MAJOR	
	CONTOUR - MINOR	
	SAWCUT	

SYMBOLS

EXISTING		PROPOSED
	GRADE	
	SIGN	
	FOUND / SET - CONTROL POINT	
	FOUND / SET - SURVEY STREET MONUMENT	
	STORM DRAINAGE - DROP INLET	
	GAS VALVE	
	FIRE HYDRANT	



CONSTRUCTION NOTES:

- SAWCUT EXISTING PAVEMENT AT LIMIT OF WORK, TYPICAL.
- PROTECT ALL DRAINAGE AND SEWAGE STRUCTURES AND PIPES FROM INFILTRATION OF ALL CONSTRUCTION DEBRIS FOR THE DURATION OF THE WORK, PER STORMWATER POLLUTION PREVENTION PLAN (SWPPP).
- STORM DRAIN TURNING STRUCTURES SHALL BE LOCATED AS SHOWN WITHIN THESE PLANS AND ADJUSTED IN THE FIELD BY THE CONTRACTOR AS APPROVED BY THE ENGINEER.

GENERAL NOTES:

- ALL WORK SHOWN ON THESE PLANS SHALL BE ACCOMPLISHED IN ACCORDANCE WITH THE SPECIAL PROVISIONS, THE UNIFORM CONSTRUCTION STANDARDS OF THE CITIES OF MARIN AND THE COUNTY OF MARIN DATED JULY, 2018, THE STATE STANDARD PLANS DATED 2018, AND THE STATE STANDARD SPECIFICATION DATED 2018, (INSOFAR AS THE SAME MAY APPLY) AS MODIFIED BY THE REVISED STANDARD PLANS AND SPECIFICATIONS IN EFFECT ON THE DATE OF THESE PLANS, AND THE SPECIAL PROVISIONS FOR THIS PROJECT.
- UTILITY LOCATIONS SHOWN ON THESE PLANS ARE APPROXIMATE ONLY AND MAY NOT BE COMPLETE. THERE MAY BE ADDITIONAL UTILITIES NOT SHOWN. IT SHALL BE THE SOLE RESPONSIBILITY OF THE CONTRACTOR TO VERIFY THE PRESENCE OF UTILITIES WITHIN THE WORK LIMITS, THEIR LOCATION AND THEIR DEPTH. VERIFICATION SHALL BE COORDINATED BY THE CONTRACTOR WITH USA NORTH, THE APPROPRIATE UTILITY OWNERS; AND BY PRUDENT EXAMINATION OF THE SITE FOR INDICATIONS THAT OVERHEAD OR SUBSURFACE INSTALLATIONS EXIST SUCH AS: MANHOLES, VALVE COVERS, WATER METERS, SEWER CLEANOUTS, GAS METERS, POLE RISERS, CABINETS, TRAFFIC LIGHTS, STREET LIGHTS, DRAINAGE INLETS AND ETC. CALL U.S.A. NORTH (UNDERGROUND SERVICE ALERT) 811, AND FOLLOW THE PROCEDURES SPECIFIED IN THE USA NORTH 811 EXCAVATION HANDBOOK.
- PRIOR TO STARTING AN EXCAVATION, EXAMINE THE SITE FOR INDICATIONS THAT UNMARKED SUBSURFACE INSTALLATIONS EXIST. SEWER LATERALS AND STORM DRAINS ARE EXAMPLES OF UTILITIES NOT MARKED BY UNDERGROUND SERVICE ALERT. CONTRACTOR IS RESPONSIBLE FOR LOCATING, POT-HOLING, AND PROTECTING ALL UTILITIES IN PLACE.
- THE CONTRACTOR IS RESPONSIBLE FOR MAINTAINING ADEQUATE DRAINAGE OF THE SITE, DURING INTERIM CONDITIONS OF CONSTRUCTION.
- CONTRACTOR SHALL PROVIDE ALL MATERIAL, LABOR, EQUIPMENT, FOR INSTALLATION, IMPLEMENTATION, AND MAINTENANCE OF ALL SURFACE WATER POLLUTION PREVENTION MEASURES THROUGHOUT THE FULL EXTENT OF THE PROJECT. SURFACE WATER IS CLASSIFIED AS ANY BODY OF WATER ABOVE GROUND.
- PAVEMENT MARKINGS DISTURBED, DAMAGED IN ANY FORM, OR TO ANY DEGREE WHILE THE CONTRACTOR HAS CUSTODY OF THE SITE SHALL BE REPLACED IN THEIR ENTIRETY AT CONTRACTOR'S EXPENSE.
- WHERE PARKING IS PERMITTED, THE CONTRACTOR SHALL POST "NO PARKING" SIGNS ON EACH PAVEMENT REHABILITATION STREET AND/OR WORK AREA. THE POSTING SHALL BE VERIFIED BY SHERIFF'S DEPARTMENT 72 HOURS PRIOR TO COMMENCING EACH PHASE OF WORK. SPECIFICATIONS FOR THESE SIGNS ARE PROVIDED IN THE SPECIAL PROVISIONS. IF THE INTENDED WORK DOES NOT COMMENCE WITHIN 24 HOURS OF THE SCHEDULED WORK, ALL "NO PARKING" SIGNS SHALL BE REMOVED FROM THE SITE OR AS DIRECTED BY THE ENGINEER AND A REVISED SCHEDULE SHALL BE SUBMITTED FOR REVISION.
- CONTRACTOR TO PROVIDE NOTICE TO PROPERTY OWNERS AND RESIDENTS PRIOR TO COMMENCING CONSTRUCTION WORK. ISSUE ALL ADVANCE NOTICES PER THE REQUIREMENTS IN THE SPECIFICATIONS AND DO NOT HAND OUT NOTIFICATION UNTIL IT IS APPROVED BY THE ENGINEER.
- ALL EXISTING STREET SURFACE FEATURES (MANHOLES, CLEAN-OUTS, MONUMENTS, STRIPING, PAVEMENT MARKINGS, ETC.) SHALL BE REFERENCED BY THE CONTRACTOR PRIOR TO START OF ANY WORK.
- TRAFFIC CONTROL SHALL BE SAFE AND PERFORMED IN ACCORDANCE WITH THE REQUIREMENTS OF THE LATEST "CA MANUAL OF UNIFORM TRAFFIC CONTROL."
- PRIOR TO PERFORMING WORK THAT MAY DAMAGE SURVEY MONUMENTS (DISK, SPIKE, SHINER OR OTHER), CONTRACTOR SHALL OBTAIN CLEARANCE FROM COUNTY SURVEYOR. REPLACE MONUMENT IN ACCORDANCE WITH THE SPECIAL PROVISIONS.

POLLUTION CONTROL NOTES:

- IF SIGNIFICANT SEDIMENT OR OTHER VISUAL SYMPTOMS OF IMPURITIES ARE NOTICED IN THE STORM WATER, CONTACT THE CIVIL ENGINEER IMMEDIATELY.
- CONTRACTOR IS RESPONSIBLE FOR INSPECTION AND RESTORATION OF ALL ASPECTS OF THIS PLAN. SEDIMENT ON PAVEMENT SHALL BE REMOVED BY SHOVEL OR BROOM AND PLACED IN A STOCKPILE.
- ALL TRASH STORAGE ENCLOSURES SHALL BE UTILIZED SOLELY FOR NON-HAZARDOUS MATERIALS PER SWPPP SEC. 3.
- ALL EMPLOYEES, CONTRACTORS, AND SUBCONTRACTORS ARE RESPONSIBLE FOR CONFORMING TO THE ELEMENTS SHOWN ON THIS PLAN OR RELATED DOCUMENTS. ANY CONTRACTOR PLANNING TO DO WORK ON-SITE SHALL BE RESPONSIBLE FOR OBTAINING AND REVIEWING ALL SWPPP INFORMATION FROM OWNER PRIOR TO START OF WORK AND EDUCATING ALL OF THEIR EMPLOYEES OR SUBCONTRACTORS AS TO THE CONTENTS OF THIS SWPPP.
- THE CONTRACTOR IS RESPONSIBLE FOR OBTAINING ALL PERMITS AND FILING ALL PLANS WITH RELATED AGENCIES ASSOCIATED WITH THEIR WORK. THIS SHALL INCLUDE, BUT NOT BE LIMITED TO, PERMITS FOR STORAGE OF HAZARDOUS MATERIALS, BUSINESS PLANS, PERMITS FOR STORAGE OF FLAMMABLE LIQUIDS, OR OTHER PLANS OR PERMITS REQUIRED BY THE TOWN OF ROSS. ALL PROPERTY OWNERS, CONTRACTORS, OR SUBCONTRACTORS WORKING ON-SITE ARE INDIVIDUALLY RESPONSIBLE FOR OBTAINING AND SUBMITTING ANY BUSINESS PLANS OR PERMITS REQUIRED BY THE LOCAL AGENCY.
- CONTRACTOR MAY RELOCATE STORAGE AND DELIVERY AREAS TO SUIT THEIR OPERATIONS. RELOCATED LOCATION TO BE SHOWN ON PLANS MAINTAINED AT JOBSITE. CONTACT CIVIL ENGINEER FOR ANY PLAN REVISIONS. CONTRACTOR TO MAINTAIN SECONDARY CONTAINMENT AS NECESSARY TO PROHIBIT POLLUTION AND TOXIC MATERIALS FROM ENTERING STORM DRAIN.

EROSION CONTROL NOTES:

- NO VEHICLES SHALL BE ALLOWED TO TRACK OR SPREAD SOIL FROM THE CONSTRUCTION AREAS ONTO EXISTING PAVED PUBLIC STREETS.
- THE EROSION AND SEDIMENT CONTROL MEASURES WILL BE OPERABLE DURING THE RAINY SEASON, OCTOBER 1ST TO APRIL 15TH. NO GRADING WILL OCCUR BETWEEN OCTOBER 1ST AND APRIL 15TH, UNLESS AUTHORIZED BY THE DIRECTOR OF PUBLIC WORKS.
- DURING THE RAINY SEASON, ALL PAVED AREAS WILL BE KEPT CLEAR OF EARTH MATERIAL AND DEBRIS. THE SITE WILL BE MAINTAINED SO THAT A MINIMUM OF SEDIMENT-LADEN RUNOFF ENTERS THE STORM DRAIN SYSTEM. THESE PLANS SHALL REMAIN IN EFFECT UNTIL THE IMPROVEMENTS ARE ACCEPTED BY THE ENGINEER, AND ALL DENUDE SLOPES ARE STABILIZED FROM EROSION.

URBAN RUNOFF POLLUTION NOTES:

- STABILIZE ALL DENUDE AREAS AND MAINTAIN EROSION CONTROL MEASURES CONTINUOUSLY BETWEEN OCTOBER 1 AND APRIL 15TH.
- REMOVE SPOILS PROMPTLY AND AVOID STOCKPILING OF FILL MATERIALS WHEN RAIN IS FORECAST. IF RAIN THREATENS, STOCK-PILED SOILS AND OTHER MATERIALS SHALL BE TARPED.
- STORE, HANDLE AND DISPOSE OF CONSTRUCTION MATERIALS AND WASTES SO AS TO PREVENT THEIR ENTRY TO THE STORM DRAIN SYSTEM. CONTRACTOR MUST NOT ALLOW CONCRETE, WASHWATERS, SLURRIES, OR OTHER MATERIALS TO ENTER CATCH BASINS OR TO ENTER SITE RUNOFF.
- USE FILTRATION OR OTHER MEASURES TO REMOVE SEDIMENT FROM DEWATERING EFFLUENT.
- NO CLEANING, FUELING OR MAINTAINING VEHICLES ON SITE SHALL BE PERMITTED IN ANY MANNER THAT ALLOWS DELETERIOUS MATERIALS TO ENTER CATCH BASINS OR TO ENTER SITE RUNOFF.

PRESERVATION OF SURVEY MONUMENTS

CONTRACTOR SHALL PRESERVE ALL SURVEY MONUMENTS WITHIN THE LIMITS OF WORK. MONUMENT(S) WITHIN THE LIMITS OF WORK SHALL BE REFERENCED PRIOR TO WORK COMMENCING BY A LICENSED LAND SURVEYOR AS REQUIRED BY SECTION 8771 OF THE BUSINESS AND PROFESSIONS CODE. CORNER RECORDS OF THIS WORK MUST BE SUBMITTED FOR FILING TO THE COUNTY SURVEYOR OF MARIN COUNTY PUBLIC WORKS DEPARTMENT, ENGINEERING DIVISION, SURVEY SECTION.

THE CONTRACTOR SHALL BE RESPONSIBLE FOR THE PRESERVATION OF EXISTING SURVEY MONUMENTS, BENCHMARKS, REFERENCE MARKS AND STAKES. SHOULD ANY SURVEY MONUMENTS, BENCHMARKS, REFERENCE POINTS, OR STAKES BE DAMAGED OR DESTROYED DURING THE PERFORMANCE OF THIS WORK, THE CONTRACTOR SHALL REPLACE SAID ITEMS PER CITY CONSTRUCTION STANDARDS IN ACCORDANCE WITH THE SPECIAL PROVISIONS AND CONTACT THE COUNTY, SURVEY SECTION, CHIEF OF PARTY FOR FINAL INSPECTION AND ACCEPTANCE OF THE WORK.

SURVEY NOTES

- DISTANCES SHOWN ARE IN FEET AND DECIMALS THEREOF.
- FIELD SURVEY WAS PERFORMED USING CONVENTIONAL METHODS (TOTAL STATIONS) AT PROJECT LOCATION.
- HORIZONTAL DATUM AND VERTICAL DATUM ARE ASSUMED.
- FIELD SURVEY WAS PERFORMED IN SEPTEMBER OF 2023 BY CSW/STUBER-STROEH ENGINEERING GROUP, INC.

SURVEY CONTROL POINTS

POINT NO.	NORTHING	EASTING	ELEVATION	DESCRIPTION
1	5000.0000	5000.0000	100.0000	CP 60D
2	4963.039543	4935.9826	101.7500	CP MAG
3	4979.081827	5101.131018	97.0900	CP MAG

PROJECT STANDARD PLANS

CALTRANS STANDARD PLANS, 2022

T13 TRAFFIC CONTROL SYSTEM FOR LANE CLOSURE ON TWO LANE CONVENTIONAL HIGHWAYS

UNIFORM CONSTRUCTION STANDARDS (UCS) OF THE CITIES OF MARIN AND COUNTY OF MARIN, JULY 2018

UCS DWG. NO. 105	CURB, GUTTER AND SIDEWALK DETAILS
UCS DWG. NO. 200	NOTES FOR CATCH BASIN, MANHOLE, DROP INLET
UCS DWG. NO. 220	CATCH BASIN GRATE DETAIL
UCS DWG. NO. 260	DROP INLET AND TURNING STRUCTURE
UCS DWG. NO. 270	SADDLE TYPE CATCH BASIN
UCS DWG. NO. 290	CONCRETE LINED DITCHES
UCS DWG. NO. 330	TRENCH DETAILS
UCS DWG. NO. 350	TRENCH NOTES

	BMP	GENERAL DESCRIPTION
EROSION CONTROL BMPS		
A	PRESERVE EXISTING VEGETATION	EXISTING VEGETATION SHOULD BE PRESERVED AS MUCH AS POSSIBLE. CASQA: EC-2.
B	SOIL COVER	COVER ALL EXPOSED SOIL WITH STRAW MULCH AND TACKIFIER (OR EQUIVALENT). CASQA: EC-3, EC-5, EC-6, EC-7, EC-14, AND EC-16.
C	REVEGETATION	AREAS OF DISTURBED SOIL/VEGETATION SHOULD BE REVEGETATED AS SOON AS PRACTICAL. CASQA: EC-4.
SEDIMENT CONTROL BMPS		
D	FIBER ROLLS (E.G. STRAW WATTLES)	USE FIBER ROLLS ALONG CONTOURS OF SHORT SLOPES 3:1 OR FLATTER, KEYED INTO GROUND AT LEAST 3-INCHES DEEP (TYPICALLY 25 FEET APART). USE WILDLIFE-FRIENDLY FIBER ROLLS MADE OF BIODEGRADABLE NATURAL MATERIALS. AVOID USING FIBER ROLLS MADE WITH PLASTIC NETTING OR FIXED APERTURE NETTING. CASQA: SE-5.
E	DRAIN INLET PROTECTION	USE PEA-GRAVEL BAGS, (OR SIMILAR PRODUCT) AROUND DRAIN INLETS LOCATED BOTH ONSITE AND IN GUTTER AS A LAST LINE OF DEFENSE. CASQA: NS-2.
GOOD HOUSEKEEPING BMPS		
F	CONCRETE WASHOUTS	CONSTRUCT A CONCRETE WASHOUT SITE PLACED AT LEAST 50 FEET AWAY FROM STORM DRAINS, WATERBODIES, OR OTHER DRAINAGES. IDEALLY, PLACE ADJACENT TO STABILIZED ENTRANCE. CLEAN AS NEEDED AND REMOVE AT END OF PROJECT. CASQA: WM-8.
G	STOCKPILE MANAGEMENT	COVER ALL STOCKPILES AND LANDSCAPE MATERIAL AND BERM PROPERLY WITH FIBER ROLLS OR SAND BAGS. KEEP BEHIND SILT FENCE, AWAY FROM WATERBODIES. AVOID USE OF PLASTIC SHEETING WHERE POSSIBLE TO KEEP PLASTIC FROM ENTERING WATERBODIES. CASQA: WM-3.
H	HAZARDOUS MATERIAL MANAGEMENT	HAZARDOUS MATERIALS MUST BE KEPT IN CLOSED CONTAINERS THAT ARE COVERED AND UTILIZE SECONDARY CONTAINMENT, NOT DIRECTLY ON SOIL. CASQA: WM-6.
I	SANITARY WASTE MANAGEMENT	PLACE PORTABLE TOILETS NEAR STABILIZED SITE ENTRANCE, BEHIND THE CURB AND AWAY FROM GUTTERS, STORM DRAIN INLETS, AND WATERBODIES. ALL PORTABLE BATHROOMS SHOULD HAVE OVERFLOW PAN/TRAY (MOST VENDORS PROVIDE THESE). CASQA: WM-9.
J	EQUIPMENT AND VEHICLE MAINTENANCE	PAVEMENT EQUIPMENT FLUID LEAKS ONTO GROUND BY PLACING DRIP PANS OR PLASTIC TARPS UNDER EQUIPMENT. CASQA: NS-8, NS-9, AND NS-10.



CSW/Stuber-Stroeh Engineering Group, Inc.
 45 Leveroni Court, Novato, CA 94949
 Tel: 415.883.9850 Fax: 415.883.9835
 Civil & Structural Engineers
 Surveying & Mapping
 Environmental Planning
 Land Planning
 Construction Management

Checked	Drawn	Designed	Description	Date	Rev

**TOWN OF FAIRFAX
 GENERAL NOTES,
 ABBREVIATIONS, & SYMBOLS
 ROCKRIDGE ROAD**

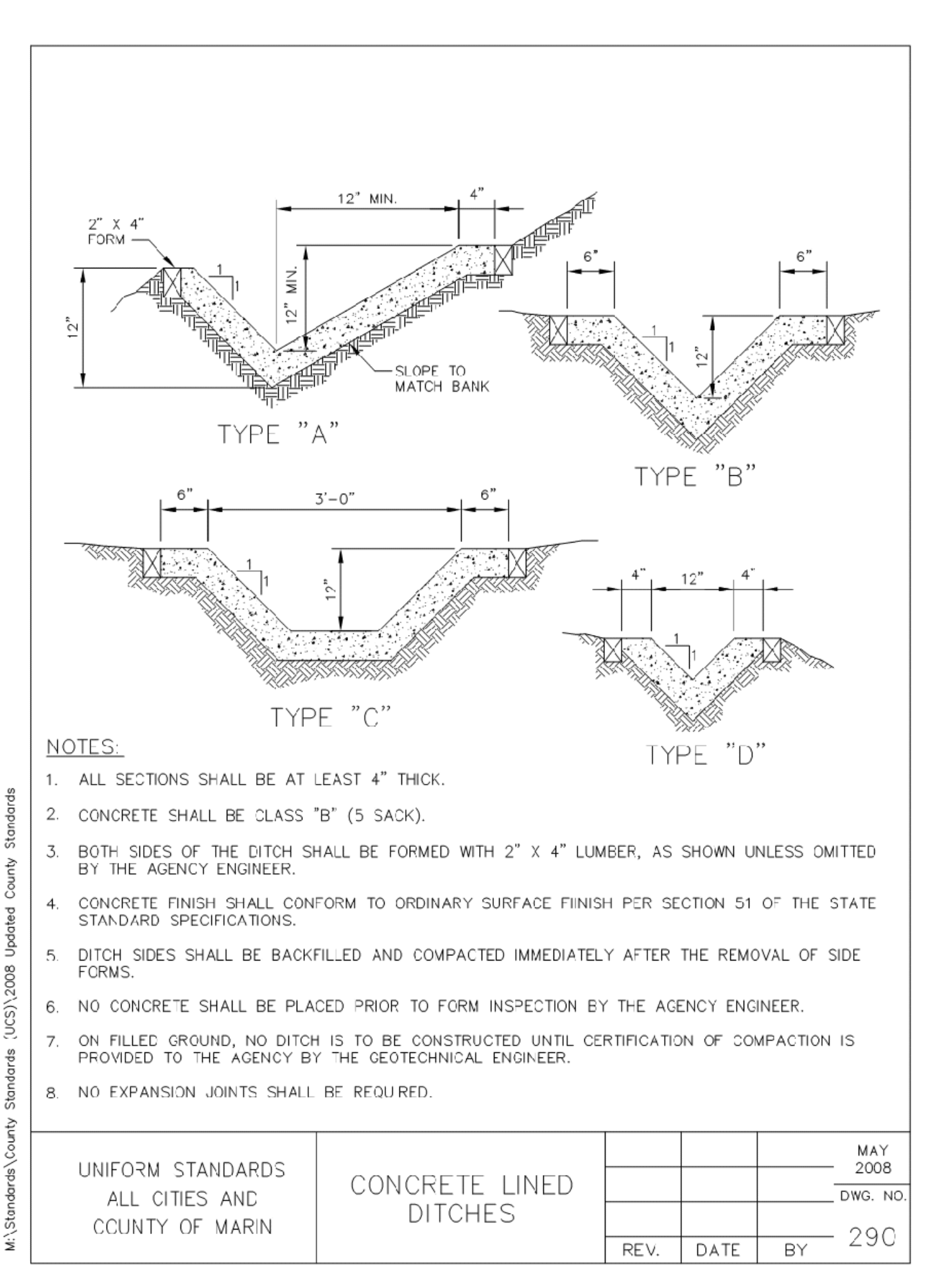
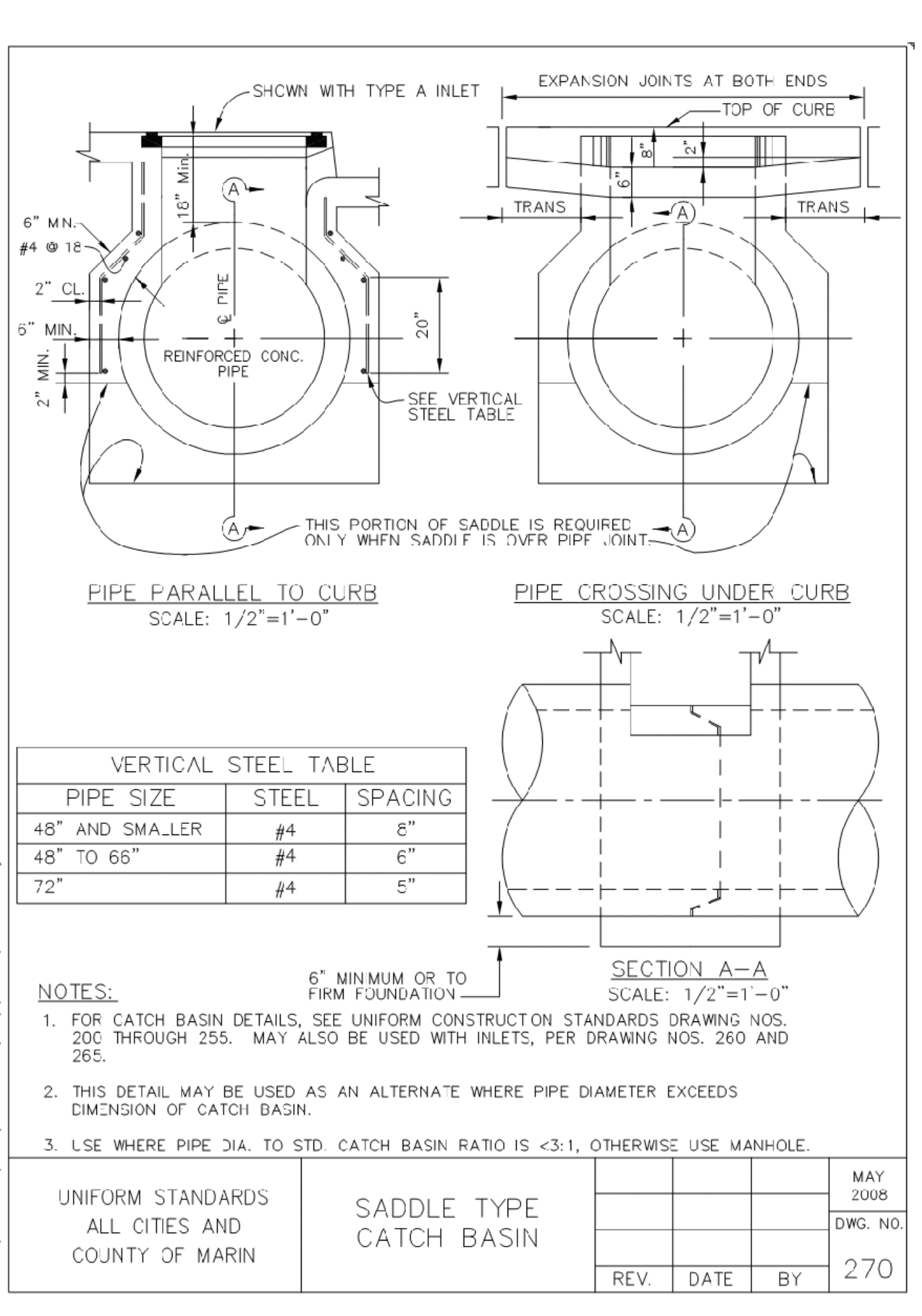
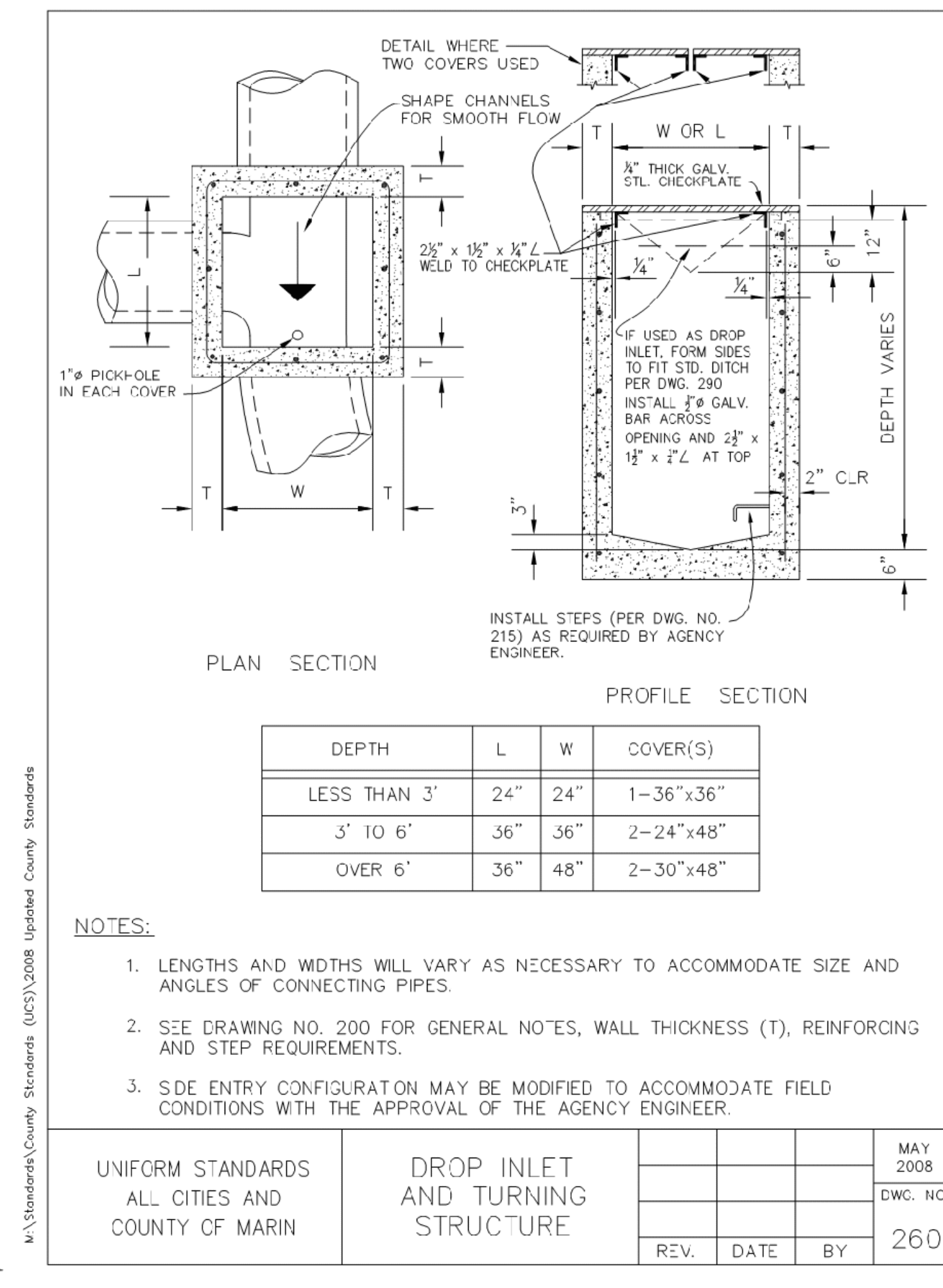
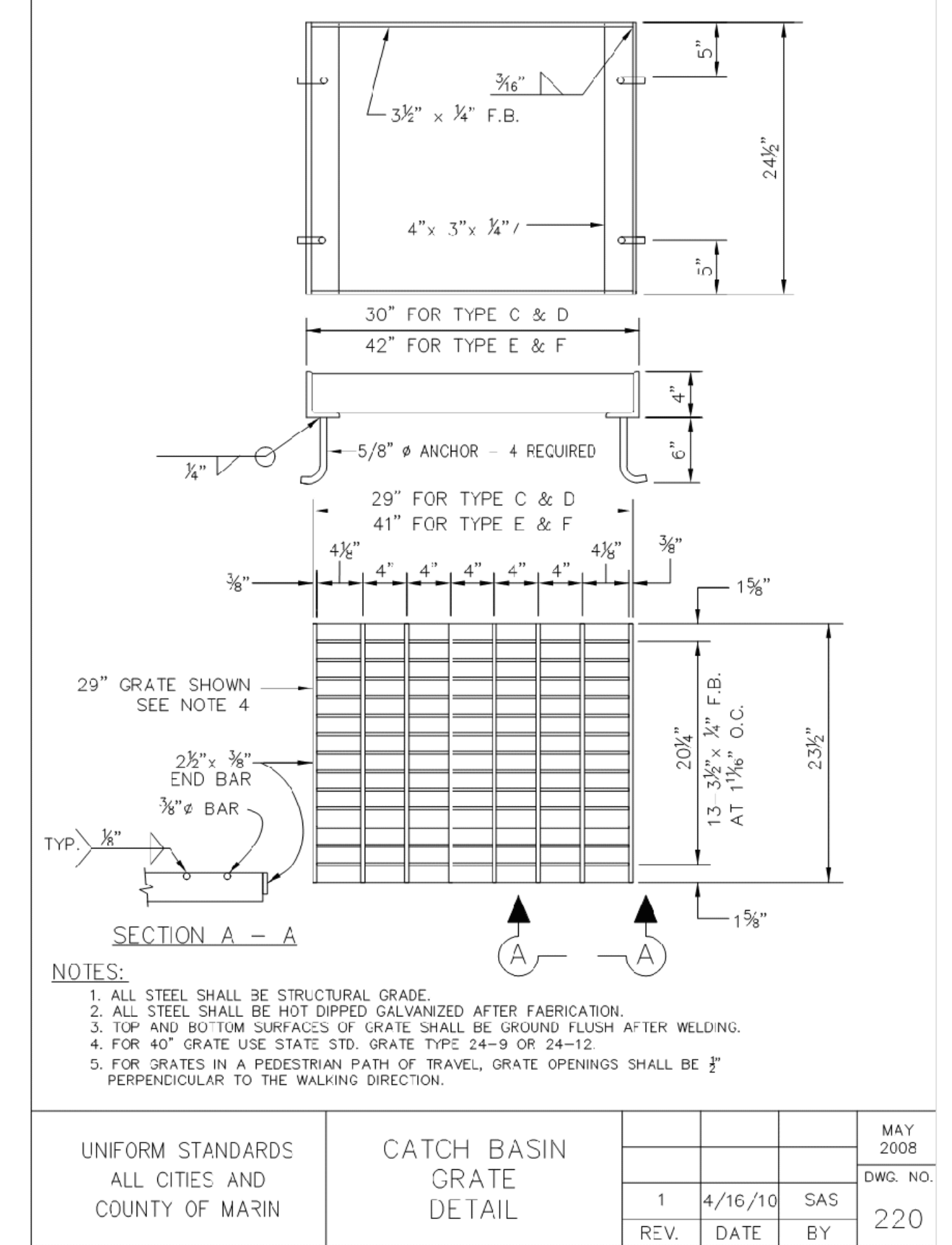
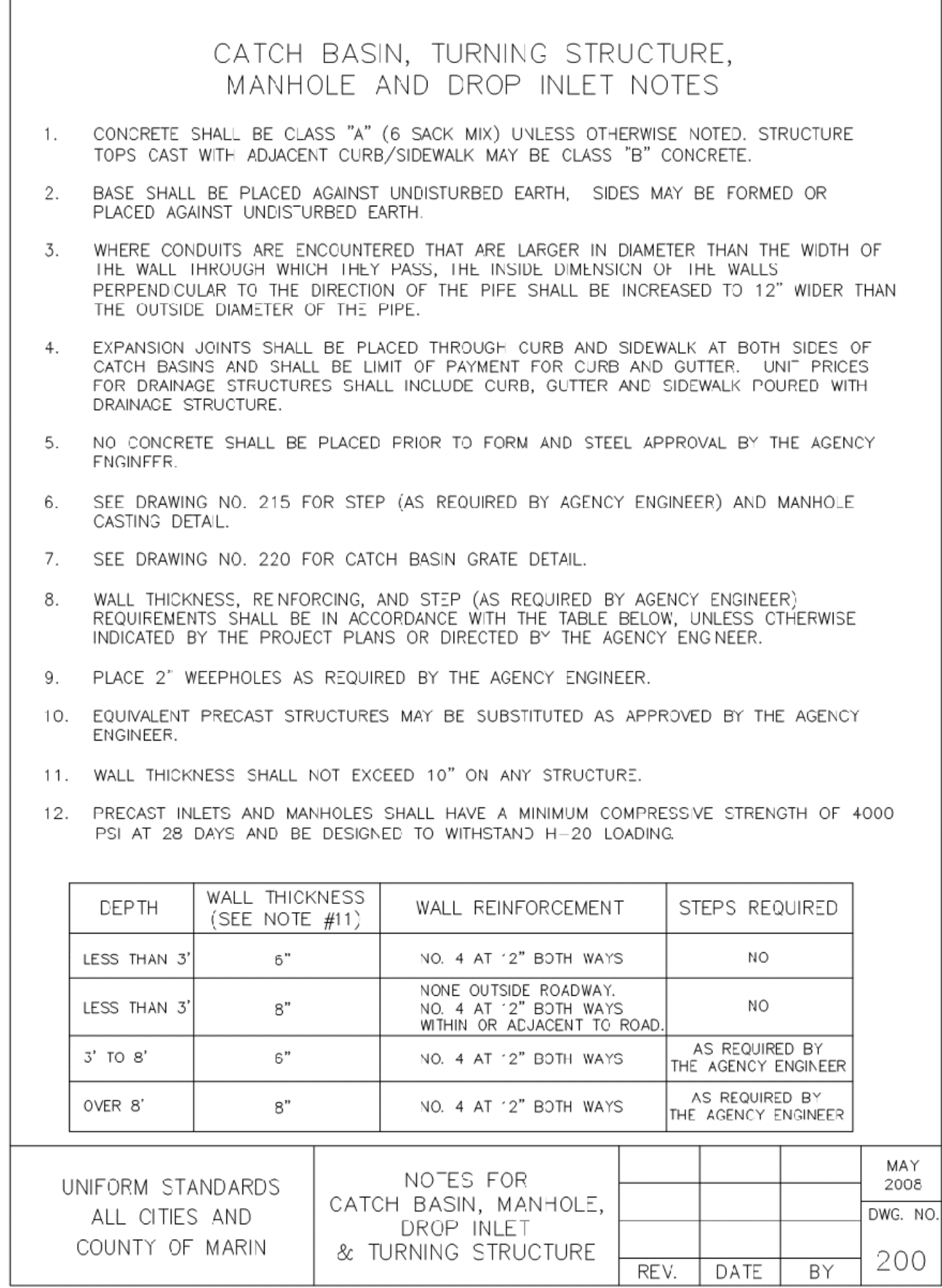
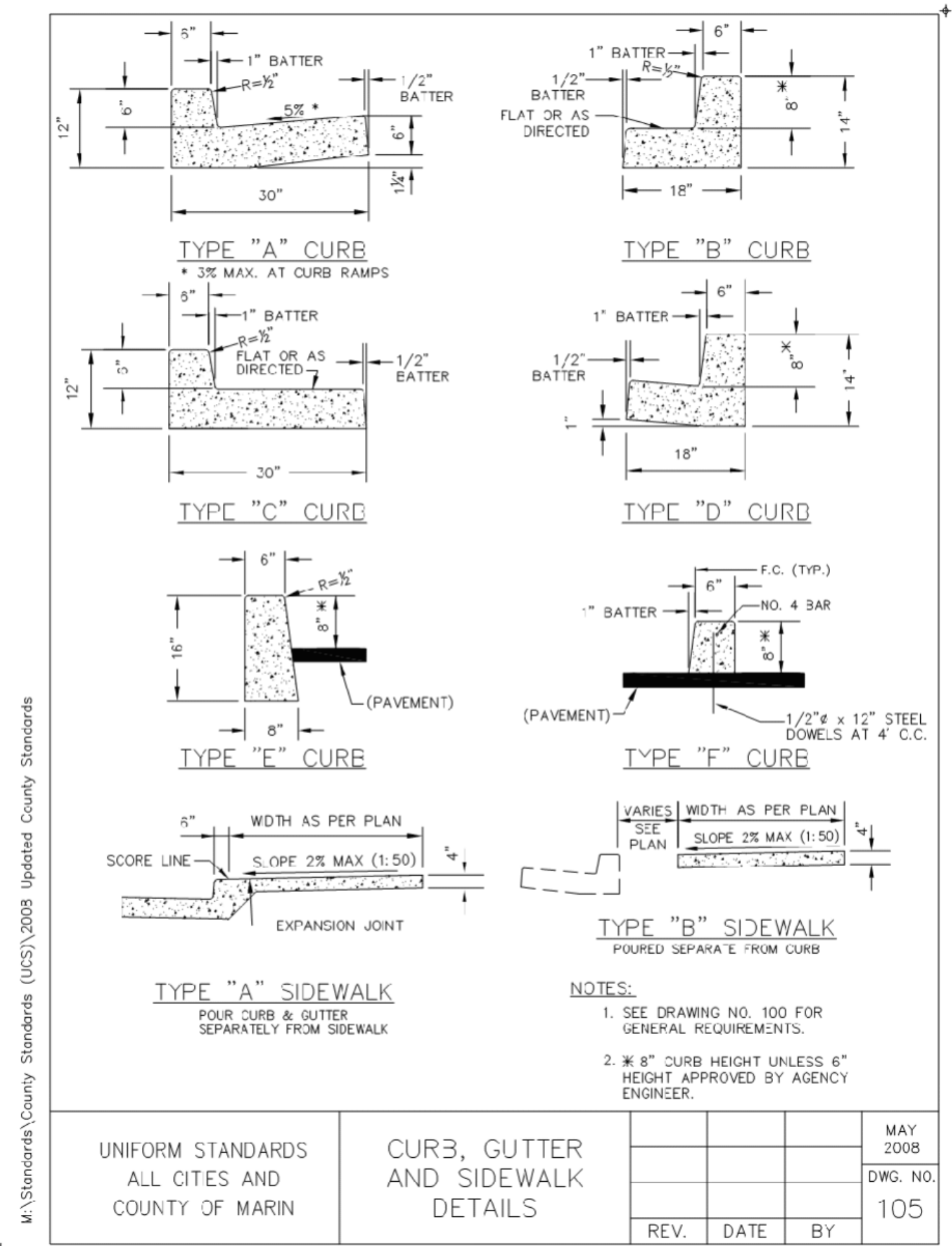
Town Of
Fairfax
 County of
Marin
 State Of
California

Prepared Under the Direction of:



Sheet
D-1.1

Scale:	as shown
Date:	November 14, 2023
Project Number:	2300142.10
Sheet Number:	2 of 4



Checked	
Drawn	
Designed	
Description	
Date	
Rev	