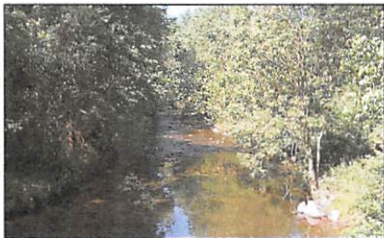


About Landsdown Meadows & Trail

The Landsdown Trail was once a spur line for the Lehigh Valley Railroad, which was completed in 1881 and connected the Town of Clinton with Landsdown. While the line was mainly used for passenger service, freight was also moved on the line to and from Mulligan's Mill (known today as the Clinton Mill), which operated as a grist mill and also processed graphite. Operation on the line discontinued several decades ago but the old train station survives and has been converted and used as a store for Cyrus Fox Lumber Company in Clinton. The County acquired the old rail line in 1993, and the adjoining property in 2009, bringing the total acreage of Landsdown Meadows and Trail to 186.

The Landsdown Trail adjoins the South Branch of the Raritan River. Over 1000 acres of parkland exist along this river, and these pieces collectively are called the South Branch Reservation. This reservation provides recreational opportunities, helps preserve the watershed from development, and provides wildlife habitat. Visit the county park website for trail maps and guides for these other park areas.



South Branch of the Raritan River

The Hunterdon County Division of Parks & Recreation is dedicated to preserving open space and natural resources, providing safe parks and facilities, and offering educational and recreational opportunities, all contributing to an enhanced quality of life for present and future generations.

Landsdown Meadows & Trail

Location: The Landsdown Trail Section is located between Lower Landsdown Road in Franklin Township and 21 West Main Street in the Town of Clinton. An additional parking area to an undeveloped part of the property is located at 5 Sidney Road, Pittstown 08867. The park area is open from sunrise to sunset. No restroom facilities are available.

Directions from the Flemington Area: Travel Route 31 north to the jug handle north of Interstate 78. Take the overpass over Route 31 and follow the signs for the business area of Clinton. Proceed past the traffic light for Leigh Street. The trailhead is located between the Cyrus Fox Lumber Company and the former Clinton Global Ag on the left. Turn in just before the Global Ag Building, and two parking spots are available alongside the building.



Eastern Chipmunk

Directions from the Hampton Area: Take Route 31 south to the traffic light at the intersection with Halstead Street. Turn right and proceed into the town of Clinton. At the traffic light, turn right onto West Main Street. The trailhead is located between the Cyrus Fox Lumber Company and the Clinton Global Ag.

(Revised 11/2019)

With the exception of park properties with reservable facilities, all properties are "carry in / carry out" and trash/recycling receptacles are not provided. Please plan accordingly and do not leave any trash/recyclables behind.

Recreational Opportunities

The Landsdown Trail is 1.5 miles long and stretches from Lower Landsdown Road to the center of the town of Clinton. The trail's natural surface is conducive to hiking, biking, and cross-country skiing. The trail traverses through both open fields and forests as well as some wetland, offering several opportunities to view a wide range of wildlife.

At one point the trail crosses over the Capoolong Creek, which is one of the main tributaries to the South Branch of the Raritan River. The State's Capoolong Creek Trail is a short hike down Landsdown Road and offers about an additional four miles of hiking, and ends in Pittstown. For more information on the Capoolong Creek Trail, contact NJ Fish & Wildlife at 609-984-0547 or visit www.njfishandwildlife.org/wmas.htm.

The Landsdown Trail does provide limited access to the South Branch of the Raritan River and the Capoolong Creek for fishing. The river is stocked with Rainbow, Brook, and Brown Trout. A state fishing license with a trout stamp must be displayed.

The parking lot on Sidney Road allows access to field edges, but currently has no formal trails.

Nearby County Park Area

Melick's Bridge: Located along Hamden Road and offers two fishing trails to access the South Branch of the Raritan River. For more information, see its specific guide.

Spring Peeper



It is the policy of the County to provide reasonable accommodations to persons with disabilities upon advance notice of need. Persons requiring accommodations should make a request at least two weeks prior to program attendance.

Landsdown Meadows and Trail

Map and Guide



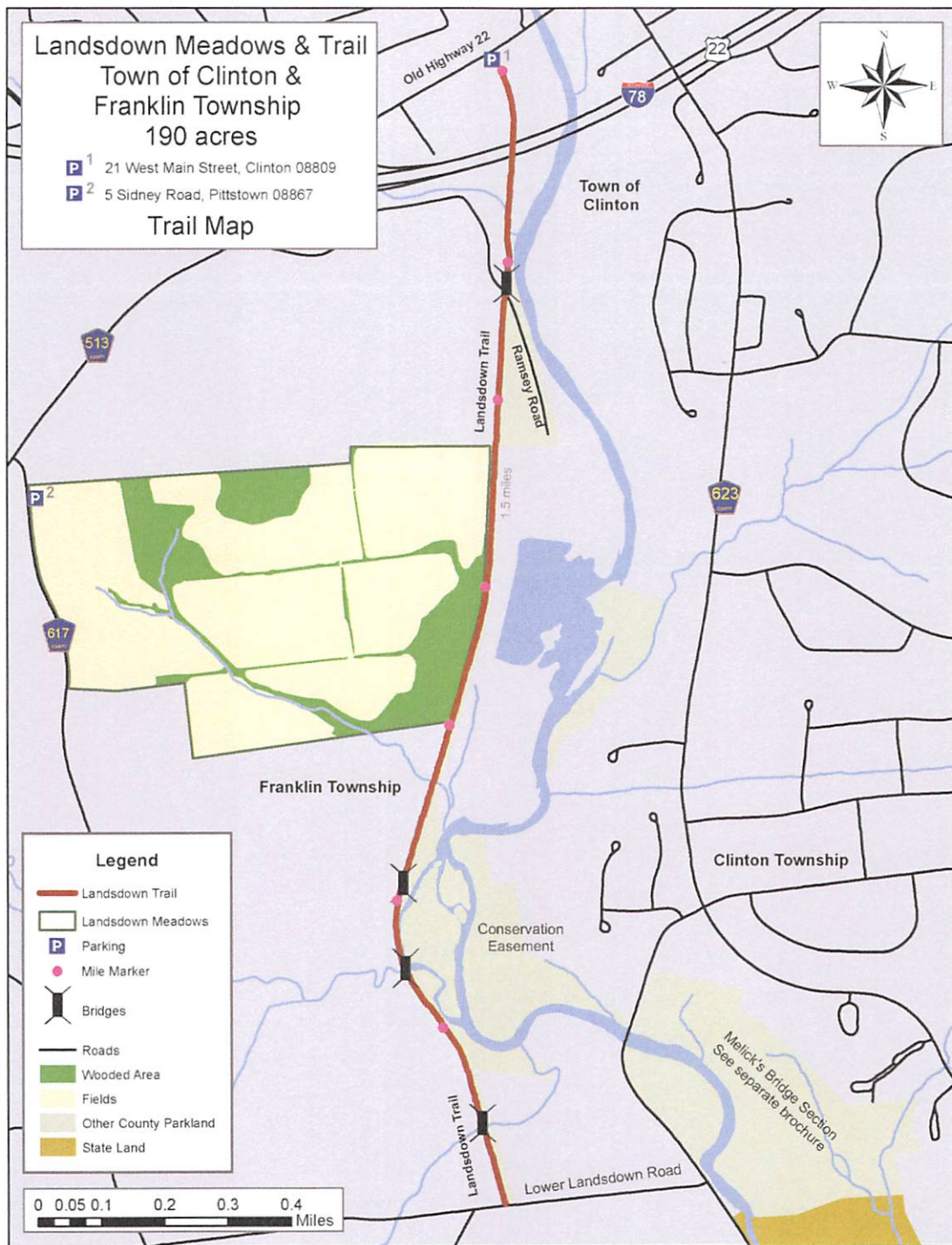
Ahiaman (Hi) Wagner, Conductor (right), with his crew, Clinton Train Station, ~1910



Hunterdon County
Division of Parks & Recreation
PO Box 2900, Flemington, NJ 08822-2900
1020 State Route 31, Lebanon, NJ 08833
Telephone (908) 782-1158
Fax (908) 806-4057

E-mail: parks@co.hunterdon.nj.us
Website: www.co.hunterdon.nj.us
(click on "Parks & Recreation")

Office Hours:
Monday to Friday 8:00 AM to 4:30 PM



SUMMARY OF RULES AND REGULATIONS

The rules and regulations governing use of facilities or properties administered by the Hunterdon County Division of Parks and Recreation are subject to change without notice and are subject to the provisions of the N.J. Statutes Title 40:27-2.2, which reads as follows:

"The Board of Chosen Freeholders may by resolution make, alter, amend, and repeal rules and regulations for the supervision, regulation and control of all activities carried on, conducted, sponsored, arranged or provided for in connection with a public golf course or other county recreational, playground, or public entertainment facility, and for the protection of property, and may prescribe and enforce fines and penalties for the violation of any such rule or regulation."

These rules and regulations have been promulgated for the protection of our patrons and for the facilities and natural resources administered by the Hunterdon County Division of Parks and Recreation.

Permits: A fully executed Facility Use Permit, issued by the County of Hunterdon for any activity, shall authorize the activity only insofar as it may be performed in accordance with the terms and conditions thereof. The additional permits, regulations, or the local municipality may be required for certain activities.

Prohibited Acts: The violation of any Municipal, State, or Federal law, Advertising, solicitation, ice skating, ice fishing, any other on-site activities, downhill skiing, bathing, fuel-powered model aircraft, the release of any animal, explosives of any kind, poisons of any kind, after-hours use, alcohol without a permit in a non-designated area, controlled dangerous substances, weapons, possession of signage, inappropriate attire, and climbing on, or rappelling from any cliff, rock face, or boulder, with or without the use of specialized equipment.

Regulated Activity: The sale of merchandise, aviation, boating, cross-country skiing, bicycling, and sledding. Battery-powered model aircraft and horses must be in designated areas, dogs must be restrained with a leash not exceeding six feet, pet waste must be removed, camping fires are by permit only. All groups of 15 or more must obtain a permit for use of any public area.

Prohibited Acts for the Protection of Property: No person shall make, construct, destroy, paint, fill in, cut, remove or tamper with any property, organic or inorganic.

Prohibited Acts for the Protection of Natural Resources: No person shall disturb wildlife or vegetation in any manner. No person shall pollute waters, litter, dump debris, or release helium balloons in any property. It is illegal to remove any natural resource from, or introduce any plant material, bulbs, or seeds to any property without a proper permit or license.

Prohibited Acts for the Protection of People: No person shall obstruct a county employee/official, interfere with a visitor, conduct any unsafe act, or cause a hazardous condition.

Vehicles: All the provisions of the N.J. State Motor Vehicle Act apply. Vehicles are not allowed in unauthorized areas. Parking is allowed in designated areas only.

ATVs, dirt bikes, and snowmobiles are prohibited on the Meadows. The rules and regulations of the County shall be enforced by duly authorized Rangers or representatives of the County under the provision of N.J.S.A. 40:32-2, thru 40:32-7.13. Any person who enters into a County Park for any purpose whatsoever has a duty and is presumed to be aware of the provisions of these rules and regulations governing the use of the facilities and properties administered by the Hunterdon County Division of Parks & Recreation.

Penalties: Any person violating any of the provisions of these regulations shall, upon conviction before a court or other adjudicative body of jurisdiction, be liable for the replacement, repair or restoration of damaged property, if any, and shall pay a penalty of not more than one thousand dollars (\$1,000.00) or other amount in the discretion of the court or other adjudicative body, or may be sentenced to imprisonment in the County jail for the term not exceeding ninety (90) days, or both, provided that this section shall not supersede any applicable penalty provision of the specific offenses, which may be set forth in the New Jersey Code of Criminal Justice, N.J.S.A. 2C:1-1, et seq., or in any other applicable state or federal law.

NOTE: County Park Rangers of the Division of Parks and Recreation have the authority to issue summons and make arrests for violations of rules and regulations governing the use of facilities and properties administered by the Division of Parks and Recreation. This is only a summary of the rules and regulations. Rules applying to special conditions, activities, or situations may be applied in addition to the complete text of regulations is available for inspection at the Park administration office in Clinton Township during regular business hours.