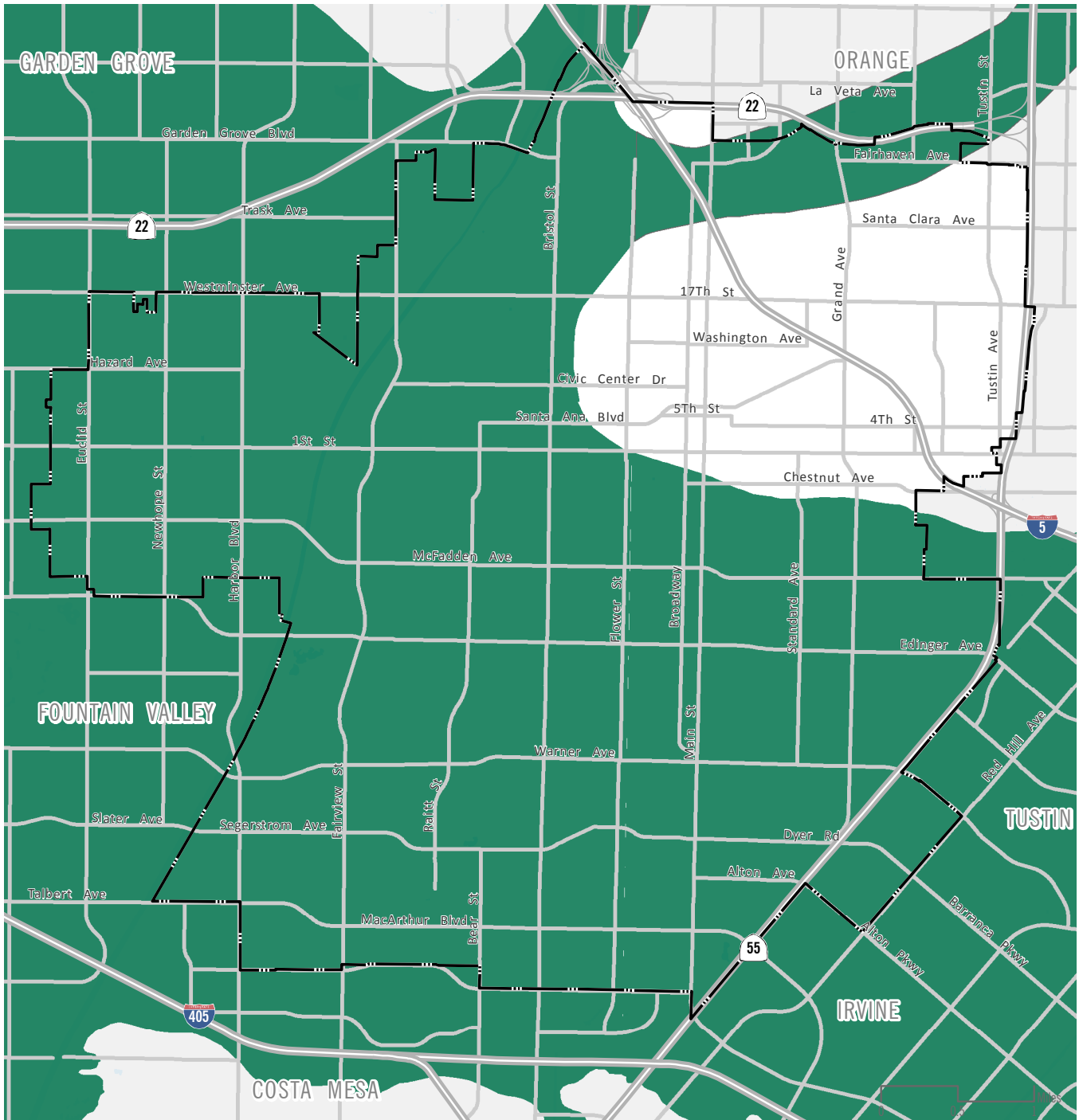


**ABOUT THE MAP.** This map shows the approximate location of areas susceptible to liquefaction—a process by which strong earth shaking causes soil that is saturated with groundwater to lose strength and behave like a fluid, and the ground appears to liquefy. Many parts of southern California are susceptible to liquefaction, including the majority of Santa Ana. The California Building Code provides standards on soils and foundations to ensure new development mitigates the risks of liquefaction.



Source: CGS 2020 Date Published: 8/3/2020

Liquefaction Zone  
 Liquefaction Zone

**FIGURE S-3**  
**LIQUEFACTION ZONES**

