

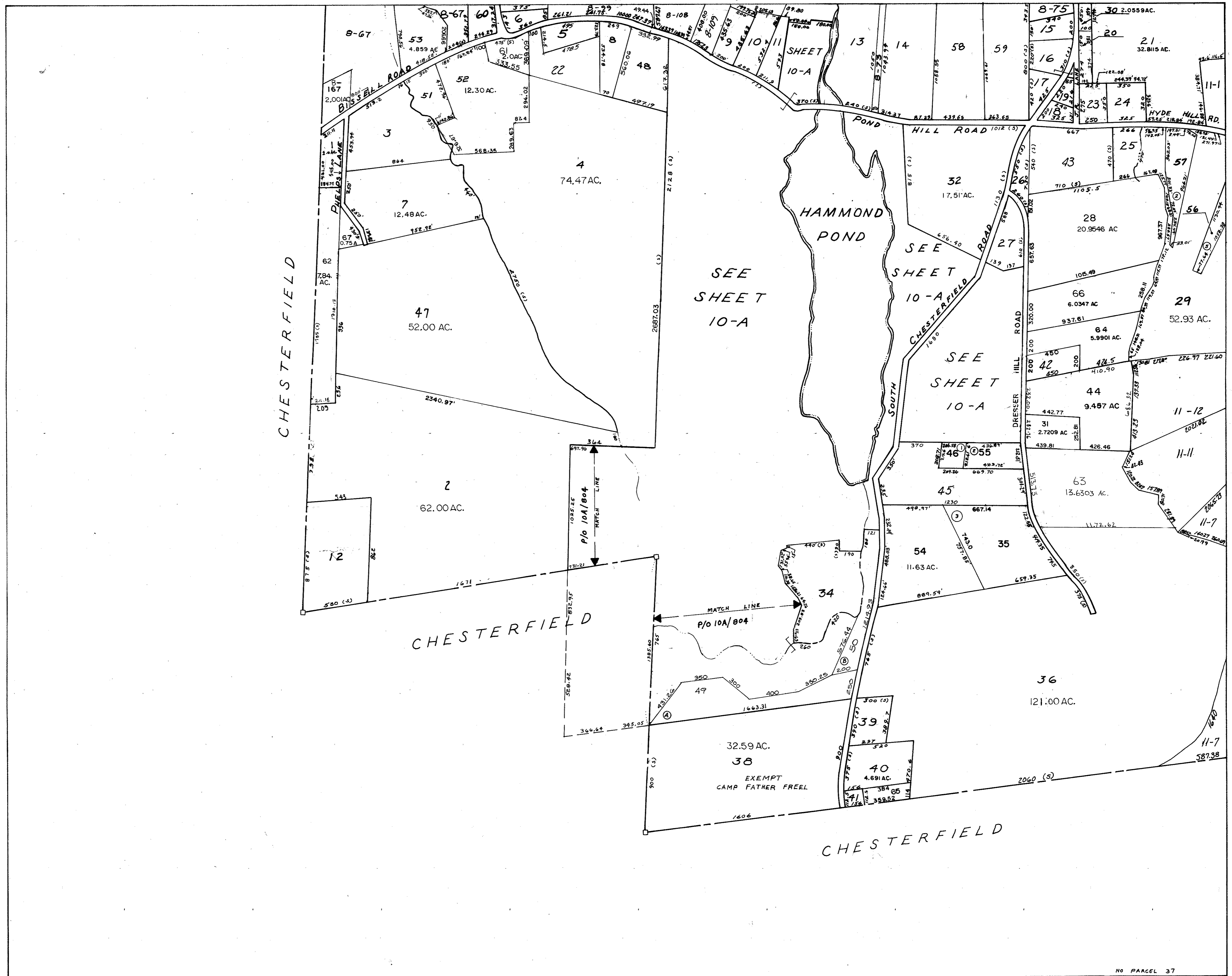
DATE OF REVISIONS: DEC., 1983 - TO LOT #46  
 DEC., 1985 - ADD LOT 47  
 DEC., 1986 - ADD LOT 48, 49, 50  
 APRIL, 1993 - ADD LOT 56

JUNE 1998 - REVISED LOT 2  
 MAY 1999 - ADDED LOTS 58, 59 & 60; REVISED LOT 14  
 AUGUST 2001 REVISED LOTS 35 & 42  
 PARCEL 37 DELETED PRIOR TO 1997  
 DEC. 2006 - ADD 61  
 MARCH 2009 - REVISE 1  
 COMBINED LOTS - 33 WITH 20  
 CORRECTED LOT NUMBERS - 62, 1, 167  
 ADDED - LOT 61, REVISED LOTS 4 & 52

JUNE 2010 - ADD LOT-63 REVISE AC LOTS-31,44,36

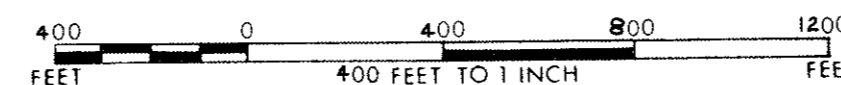
MARCH 2013 - COMBINED LOT 1118 WITH LOT 29  
 REDUCED AC. LOTS 21, 40  
 ADDED LOTS 64, 65  
 ADDED AC. LOT 30

NOV. 2017 - REVISED LOTS 28, 31, 44  
 ADDED LOT 66, 67

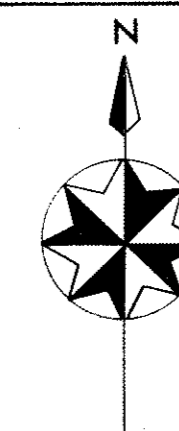


PREPARED BY  
 ALMER HUNTLEY JR. & ASSOCIATES INC.  
 REGISTERED LAND SURVEYORS & CIVIL ENGINEERS  
 238 BRIDGE STREET  
 NORTHAMPTON MASSACHUSETTS  
 REVISED AND REPRINTED BY  
 CARTOGRAPHIC ASSOCIATES, INC.  
 LITTLETON, NEW HAMPSHIRE 03561

**TOWN OF GOSHEN  
 MASSACHUSETTS**  
 ASSESSORS PLAN



1	2	3
4	5	6
7	8	9
	10	11



DATE OF INDEXING: 1967  
 DATE OF REVISIONS: 3-28-78

REVISED AND REPRINTED BY  
 HOLMBERG AND HOWE INC.  
 EASTHAMPTON, MASS.

SHEET NO.  
 10