

DATE of REVISIONS: DEC, 1983 - TO LOT #74  
 DEC, 1985 - ADD LOTS 75 & 76

JUNE 1998 - ADDED LOT 85, REVISED LOT 30  
 JUNE 2000 - ADDED LOTS 86, 87, 88, 89  
 REVISED LOTS 4 & 8  
 MARCH 2004 - ADDED 90-93  
 REVISED 66, 67

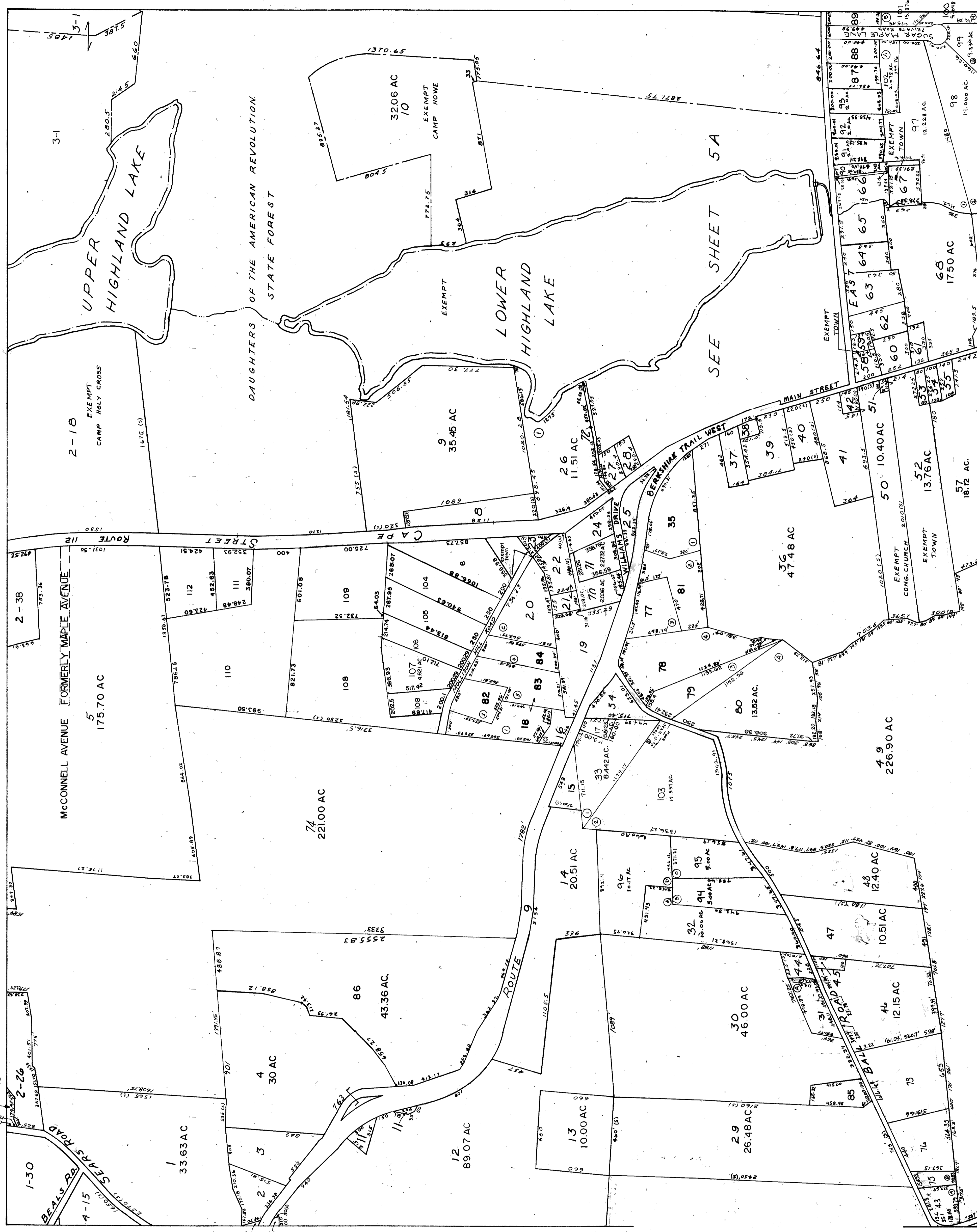
DEC. 2006 - ADD 94-96, 97, 91-102, SUGAR MAPLE LANE  
 REVISE 32, 35, 33  
 ADD ACRES 90-93  
 DELETE 69

MARCH 2009 - COMBINED LOTS - 17 WITH 33  
 56 WITH 57  
 CHANGED LOT - 97 TO 103

MARCH 2013 SPLIT LOTS 6 ADDED LOTS 104, 105, 106, 107,  
 108, 109, 110, 111, 112  
 COMBINED LOTS 2, 10 AND 7  
 WITH 31

NOV. 2017 - REVISED LOTS 70, 71, 106, 107  
 ADDED LOT 108

4-17  
 4-26



# TOWN OF GOSHEN MASSACHUSETTS

## ASSESSORS PLAN

1	2	3
4	5	6
7	8	9
10	11	

PREPARED BY  
 ALMER HUNTLEY JR. & ASSOCIATES, INC.  
 REGISTERED LAND SURVEYORS & CIVIL ENGINEERS  
 38 BALDWIN STREET  
 NORTHAMPTON, MASSACHUSETTS  
 REVISED AND REPRINTED BY  
 CARTOGRAPHIC ASSOCIATES, INC.  
 LITTLETON, NEW HAMPSHIRE 03561

DATE OF INDEXING: 1967  
 DATE OF REVISIONS: 3-28-78

REVISED AND REPRINTED BY  
 HOLMBERG & HOWE, INC.  
 EASTHAMPTON, MASS.

SHEET  
 NO. 5