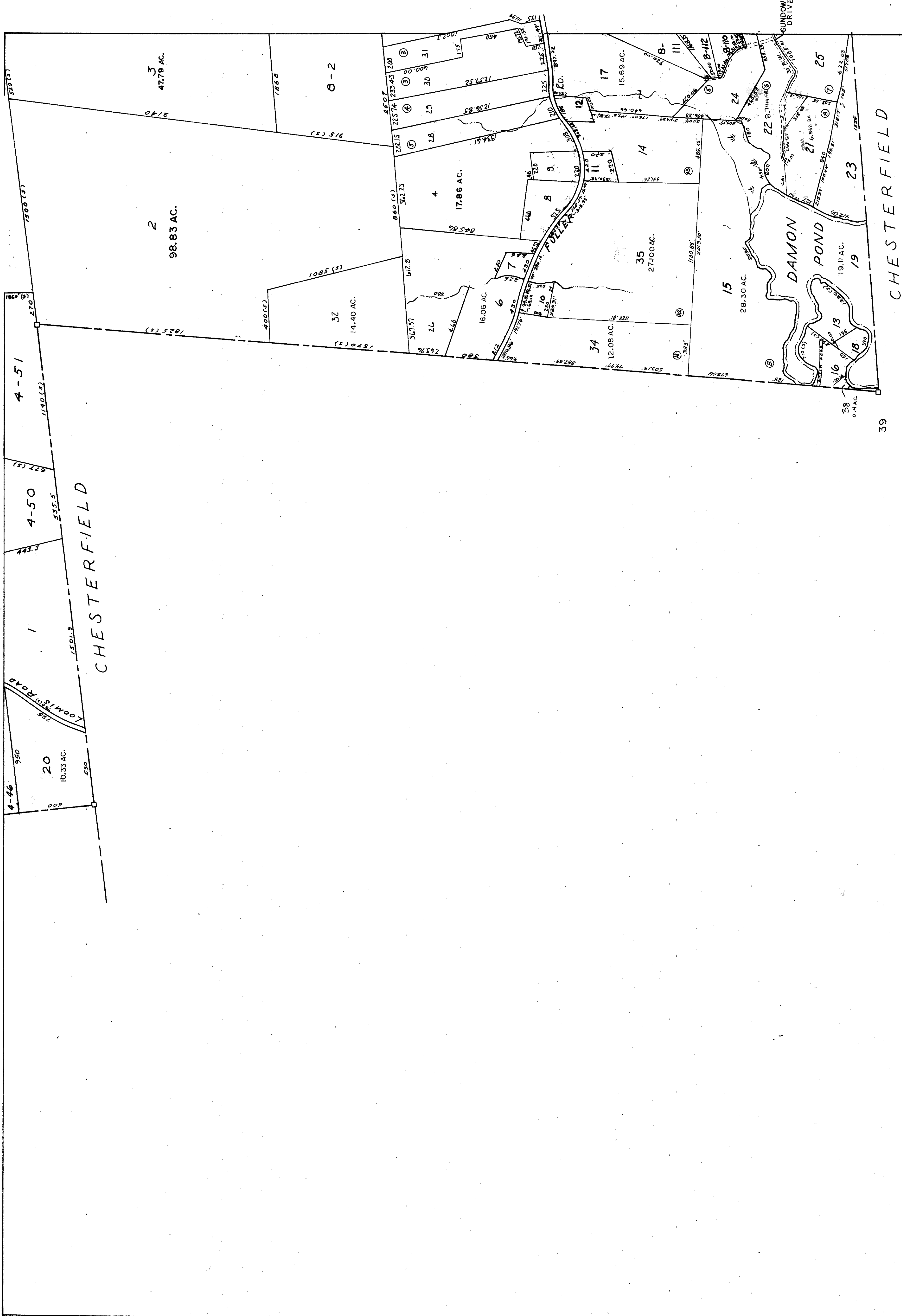


DATE of REVISIONS: DEC, 1983 - TO LOT # 25  
 DEC. 1985. ADD LOTS 26-32  
 JUNE 1988 - ADDED LOT 36; REVISED LOT 17;  
 CHANGED LOT 33 TO 35  
 JUNE 2000 ADDED LOT 37; REVISED LOT 35  
 AUGUST 2001 REVISED LOT 14  
 DEC. 2006 ADD 38, A1, A2  
 REVISE 21, 22, 1  
 NOV - 2007 REVISE 31, 32  
 MARCH 2009 COMBINED LOTS-37 WITH 35  
 COMBINED LOTS-27 AND 5 WITH-6  
 MARCH 2013 COMBINED LOTS 33, 36 WITH 12  
 LOTS 4-48, 49, WITH 7-1  
 NOV. 2017 - ADDED LOT 39

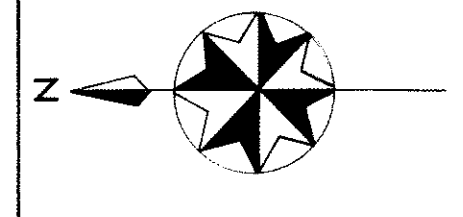


# TOWN OF GOSHEN MASSACHUSETTS

## ASSESSORS PLAN



1	2	3
4	5	6
7	8	9
	10	11



DATE OF INDEXING: 1967  
 DATE OF REVISIONS: 3-28-78

REVISED AND REPRINTED BY  
 HOLMBERG AND HOWE INC.  
 EASTHAMPTON, MASS.

SHEET  
 NO. 7

PREPARED BY  
 ALMER HUNTLEY JR. & ASSOCIATES, INC.  
 REGISTERED LAND SURVEYORS & CIVIL ENGINEERS  
 238 BRIDGE STREET  
 NORTHAMPTON, MASSACHUSETTS  
 REVISED AND REPRINTED BY  
 CARTOGRAPHIC ASSOCIATES, INC.  
 LITTLETON, NEW HAMPSHIRE 03561